

Supplementary Information

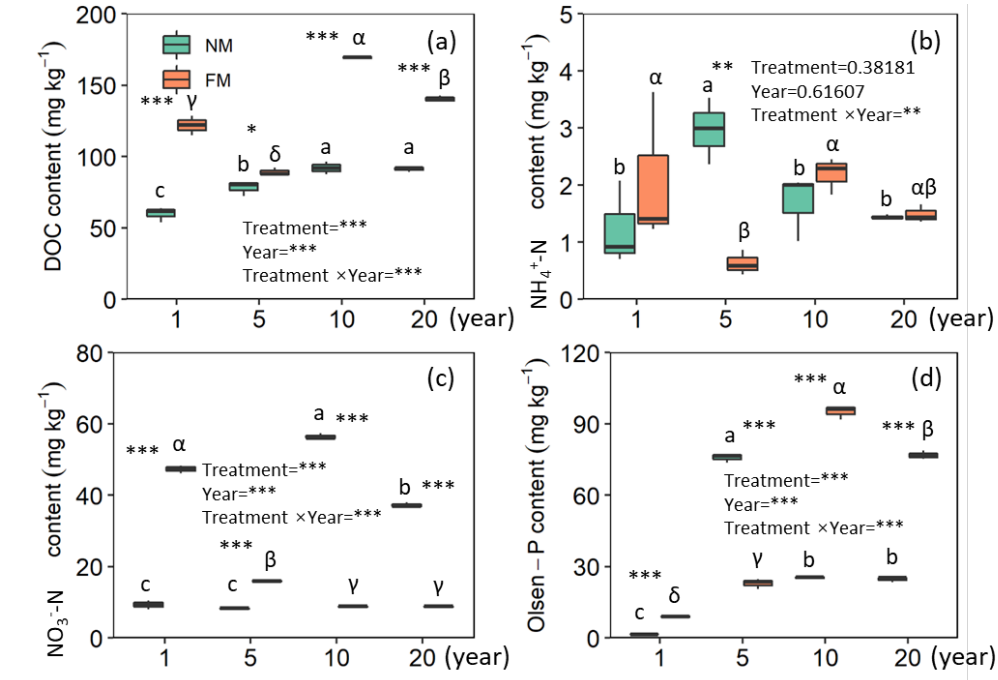


Fig. S1 Changes in soil available nutrients (DOC (a), NH₄⁺-N (b), NO₃⁻-N (c), and Olsen-P (d)) over time in soils with (FM) or without (NM) plastic film mulching. DOC, dissolved organic C. Different English and Greek lowercase letters indicate significant differences ($P < 0.05$) between treatment in NM and FM, respectively. *, **, and *** represent significant effects of year, treatment, or year–treatment interaction at $P < 0.05$, <0.01 , and <0.001 , respectively.

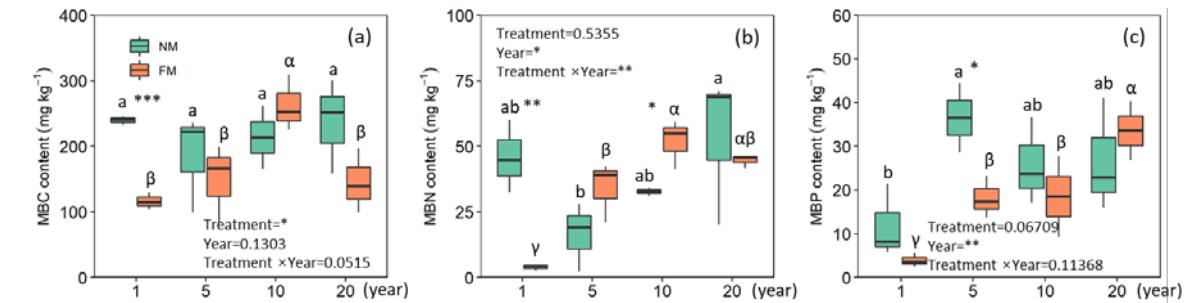


Fig. S2 Changes in soil microbial biomass C, N, and P between treatments over time in soils with (FM) or without (NM) plastic film mulching. MBC, microbial biomass C; MBN, microbial biomass N; MBP, microbial biomass P. Different English and Greek lowercase letters indicate significant differences ($P < 0.05$) between treatment in NM and FM, respectively. *, **, and *** represent significant effects of year, treatment, or year–treatment interaction at $P < 0.05$, <0.01 , and <0.001 , respectively.