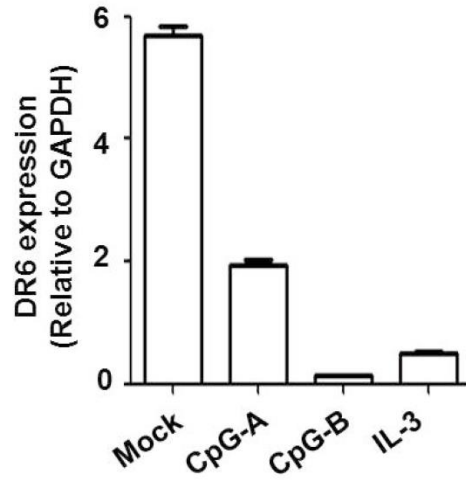
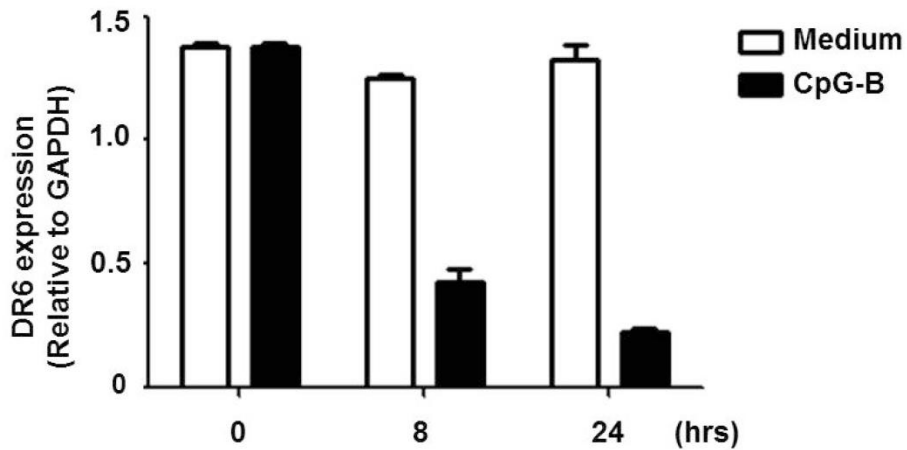
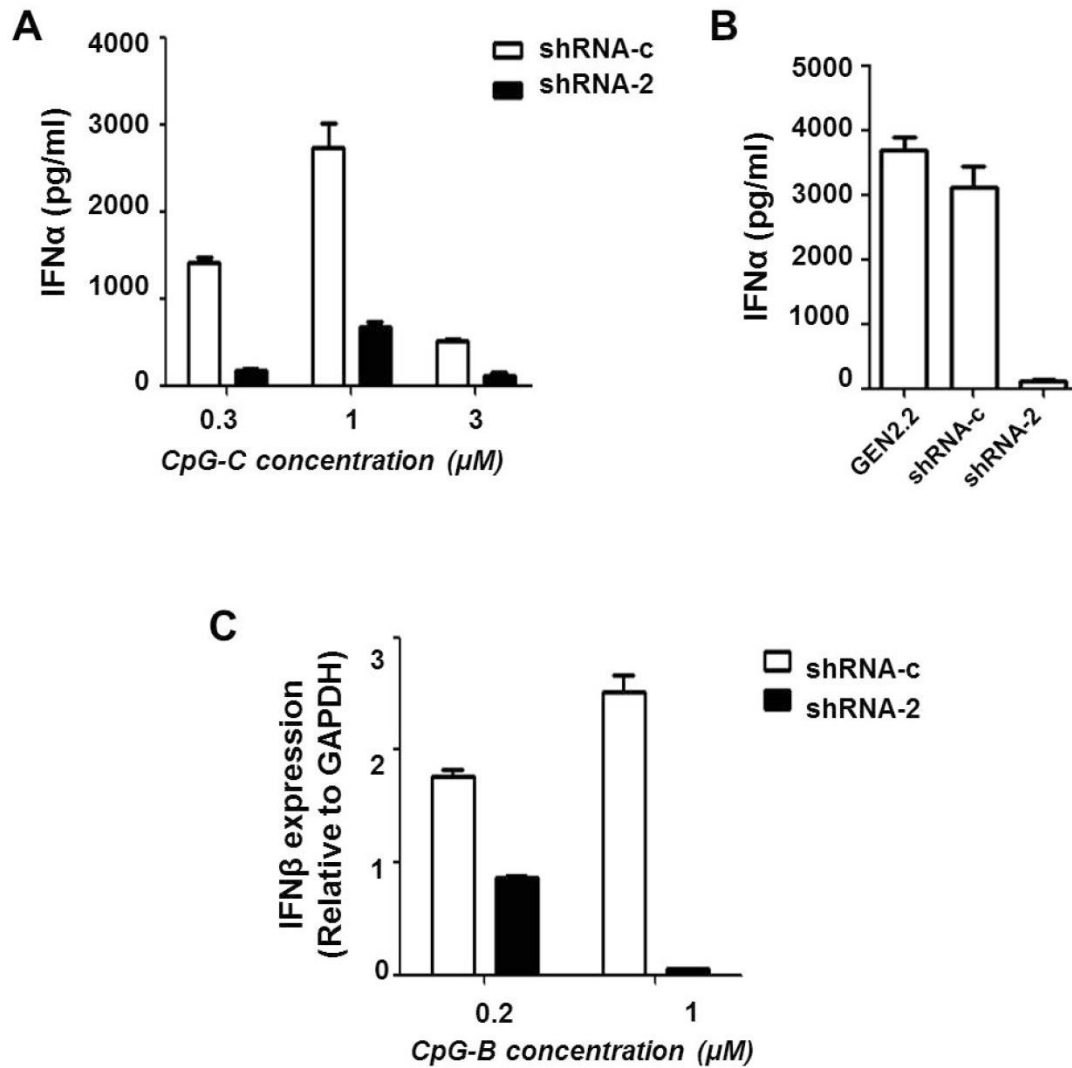


**A****B**

**Figure S1. DR6 is downregulated upon activation.**

(A) pDCs were harvested as soon as purified (mock) or cultured with CpG-A (1 $\mu$ M) / CpG-B (1 $\mu$ M) / IL-3 (20ng/ml) for 24 hours and then harvested. The levels of DR6 RNA were evaluated by quantitative real-time PCR. (B) GEN2.2 cells were cultured with medium only or stimulated with CpG-B (0.2 $\mu$ M) for 0~24 hours. Cells were harvested and the levels of DR6 RNA were evaluated by quantitative real-time PCR.



**Figure S2. DR6 regulates CpG-ODN induced IFN-I production.**

(A) DR6 knockdown cells and control cells were stimulated with CpG-C (0.3 $\mu\text{M}$ , 1 $\mu\text{M}$  and 3 $\mu\text{M}$ ) for 20 hours. Levels of IFN- $\alpha$  in the culture supernatants were examined by ELISA. (B) DR6 knockdown cells and control cells were stimulated with CpG-A (1 $\mu\text{M}$ ) for 20 hours. Levels of IFN- $\alpha$  in the culture supernatants were examined by ELISA. (C) DR6 knockdown cells and control cells were stimulated with CpG-B (0.2 $\mu\text{M}$  and 1 $\mu\text{M}$ ) for 6 hours. Levels of IFN- $\beta$  RNA were measured by quantitative real-time PCR.