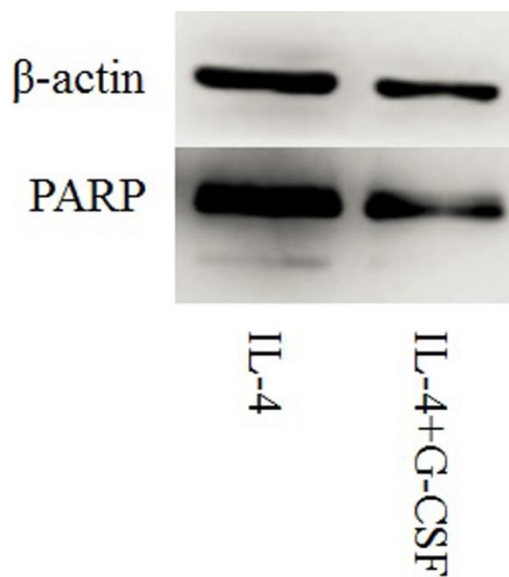


Protein chip assay in C57 normal and AD mice

	C57-AD1/Normal	C57-AD3/normal
G-CSF	47.3	3.2
MIG (CXCL9)	4.7	6.7
I-TAC (CXCL11)	2.2	3.8
IL-17	1.2	1.0
IL-10	1.0	0.7
IL-1 β	0.7	0.8
MIP-3 α (CCL20)	1.4	2.6
KC (CXCL1)	6.7	18.0
MIP-2 (cxcl2)	10.0	2.5
TNF α	0.8	0.9
IFN- γ	0.7	0.8
MDC (CCL22)	6.7	4.0
BLC (CXCL13)	4.4	3.9
IL-6	3.5	0.9
IL-23	0.6	0.8
IL-4	1.2	0.7

Supplementary Figure 1. Protein-chip assay in C57-normal and C57-AD mice.



Supplementary Figure 2. Anti-apoptotic effect of G-CSF treated MDSCs. PARP cleavage was detected in IL-4 treated cells but not in IL-4 plus G-CSF treated cells.