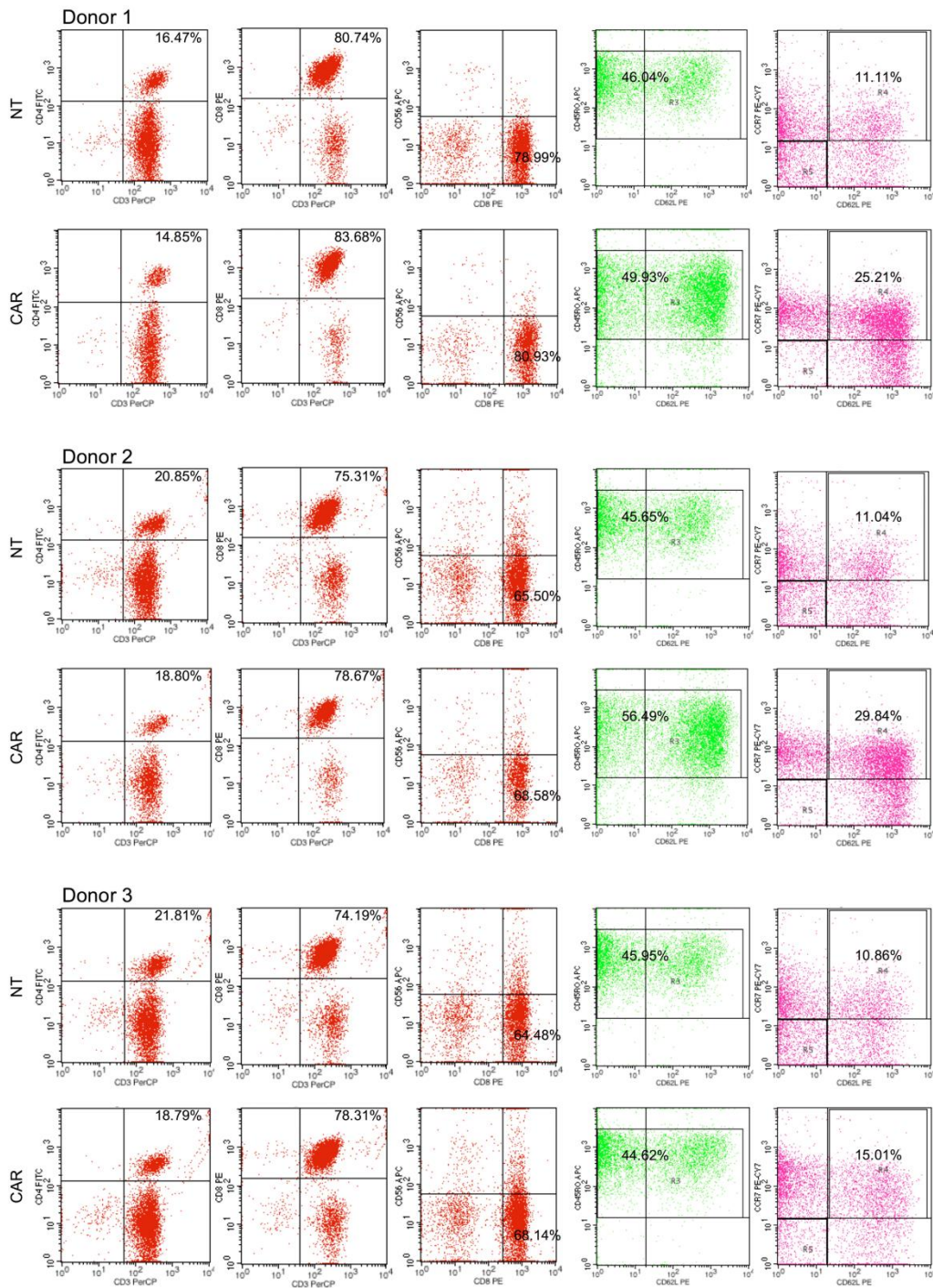
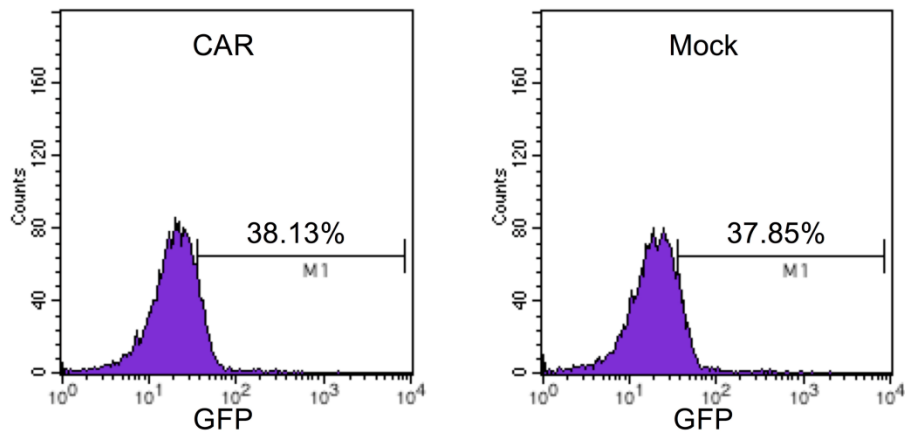


## Supplementary Materials



**Figure S1. Phenotypic characteristics of CART-HER2 and NT T cells, from three healthy donors, were determined by FACS analysis on day 12 of culture.**



**Figure S2.** Transfection efficiencies of CART-HER2 and mock T cells, selected from one of the three healthy donors, were measured by FACS analysis using the marker GFP on day 12 of culture.



**Figure S3.** Images of HER2<sup>high+</sup> tumor-bearing mice treated with CART-HER2 and NT T cells; the mice were sacrificed on day 33 after inoculation with tumor cells.



**Figure S4. Images of mice with GCSCs-derived tumors, sacrificed on day 21 after treatment with CART-HER2 and NT T cells.**