

## SUPPLEMENTARY DATA

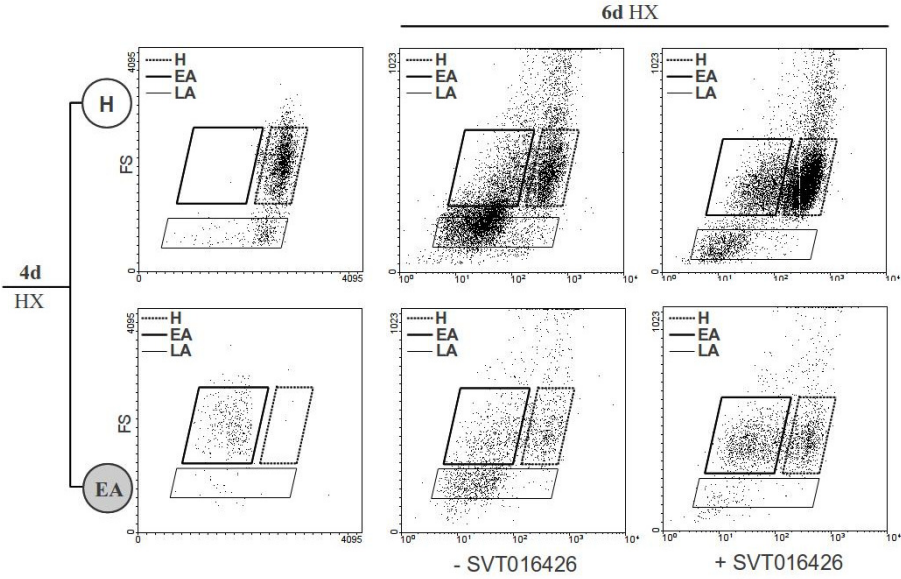
### Apaf1 inhibition promotes cell recovery from apoptosis

Anna Gortat<sup>1 ‡</sup>, Mónica Sancho<sup>1 ‡</sup>, Laura Mondragón<sup>1</sup>, Àngel Messeguer<sup>2</sup>,  
Enrique Pérez-Payá<sup>1,3</sup> and Mar Orzáez<sup>1 \*</sup>

**Supplementary Figure 1.** Apaf1 chemical inhibition allows cell recovery after the onset of apoptosis. (A) HeLa-GFPst cells were sorted after 4 days of HX into H, EA and LA (not shown) populations. H and EA cells were reseeded and resubmitted to HX for 6 additional days in the presence or absence of 5  $\mu$ M SVT016426. The evolution of the different populations at the end of the experiment was observed by flow cytometry. (B) HeLa-GFPst cells were induced to apoptosis by adding 0.25  $\mu$ M Doxo. As in A, cells were sorted into H, EA and LA (not shown) populations. H and EA cells were reseeded and treated with 0.5  $\mu$ M Doxo for an additional period of 24 h in the presence or absence of 5  $\mu$ M SVT016426. The evolution of the different populations at the end of the experiment was observed by flow cytometry.

Figure S1

A



B

