





澳大利亚阿德莱德市鲍顿主公园 BOWDEN MAIN PARK IN ADELAIDE, AUSTRALIA

澳派景观设计公司 / ASPECT Studios

引言

鲍顿改造项目是一个雄心勃勃的城市填充式改造项目，其将原先由奇胜电器公司占据的15hm²的工业用地改造为一处集住宅、零售、商铺于一体的新社区，这个蓬勃发展的社区可容纳约3 000名居民。

设计理念和策略

南澳大利亚州政府发展机构——南澳城市更新组织负责推进该项目的全面总体规划进程，包括构建串联城市街道网络的休闲场所、一处拥有不同居住密度的公寓式住宅区，以及一系列相互连接的公园。对阿德莱德来说，这是一种独有而先进的街道样式，其通过采用共享街道的设计方式，如引入平埋路缘和雨水花园、广植树木等，来确保行人优先通行，以最大限度地提升街道等公共空间的品质。

在最初由T.C.L景观设计公司主导的总体规划中，公园被设想为新城区中的一个中规中矩的广场。在尊重原总体规划方案的基础上，为实现公园在其所处城市环境中的功能，不仅需要设置诸如花园、休息区和林荫草地等被动式景观空间，还需要引入更多的多功能空间，如包括可用于大型活动的开放草坪，以及作为入口的步行廊道。步行廊道连接起公园和零售区——4号工厂，该建筑已被重新改造为一处美食广场，这里有小餐

1. 鲍顿主公园的景观设计是为了吸引人们在此停留，以创造出一处可供休闲、社交和娱乐的场所。

1. The landscape design for Bowden main park is to attract people to linger to create a place of relaxation, social connection and recreation.

© ASPECT Studios

<https://doi.org/10.15302/J-LAF-20170509>

收稿时间 RECEIVED DATE / 2017-05-26

中图分类号 / TU986

文献标识码 / A

摘要

新建的鲍顿主公园坐落于南澳大利亚州鲍顿改造区中心，是当地最大的公共空间。它的建成大大推动了鲍顿地区在阿德莱德中央商务区边缘地带创造一个多样化、有活力的新型社区这一愿景的实现。鲍顿公园为占地15hm²的城市填充式开发中心营造了一片绿洲，这里将成为阿德莱德中心商务区外围人口最稠密的城市区域，预计将为学生、年轻家庭、首套房业主和退休人员等人群提供居住场所。鲍顿公园的案例展现了一个思虑周全的设计如何建立人与人之间关系的纽带，增强城市的社交和娱乐功能，以及如何在不断发展的社区中为当地居民提供适宜的场所。

关键词

可持续设计；公共空间；城市填充式改造；社区参与

ABSTRACT

Bowden's new main park is the central and single largest public space located within the Bowden redevelopment in South Australia. It makes a significant step in realizing the vision for Bowden of creating a diverse and exciting new community on the edge of Adelaide's CBD. Bowden Main Park provides a green oasis in the heart of a 15-hectare urban infill development that will become Adelaide's most densely populated urban district outside the CBD, and an area projected to house a wide ranging demographic from students to young families, first home owners and retirees. Bowden Main Park is an example of how thoughtful and considered design can connect people, enhance the social and recreational fabric of the city and provide an authentic destination within the new and still establishing community.

KEY WORDS

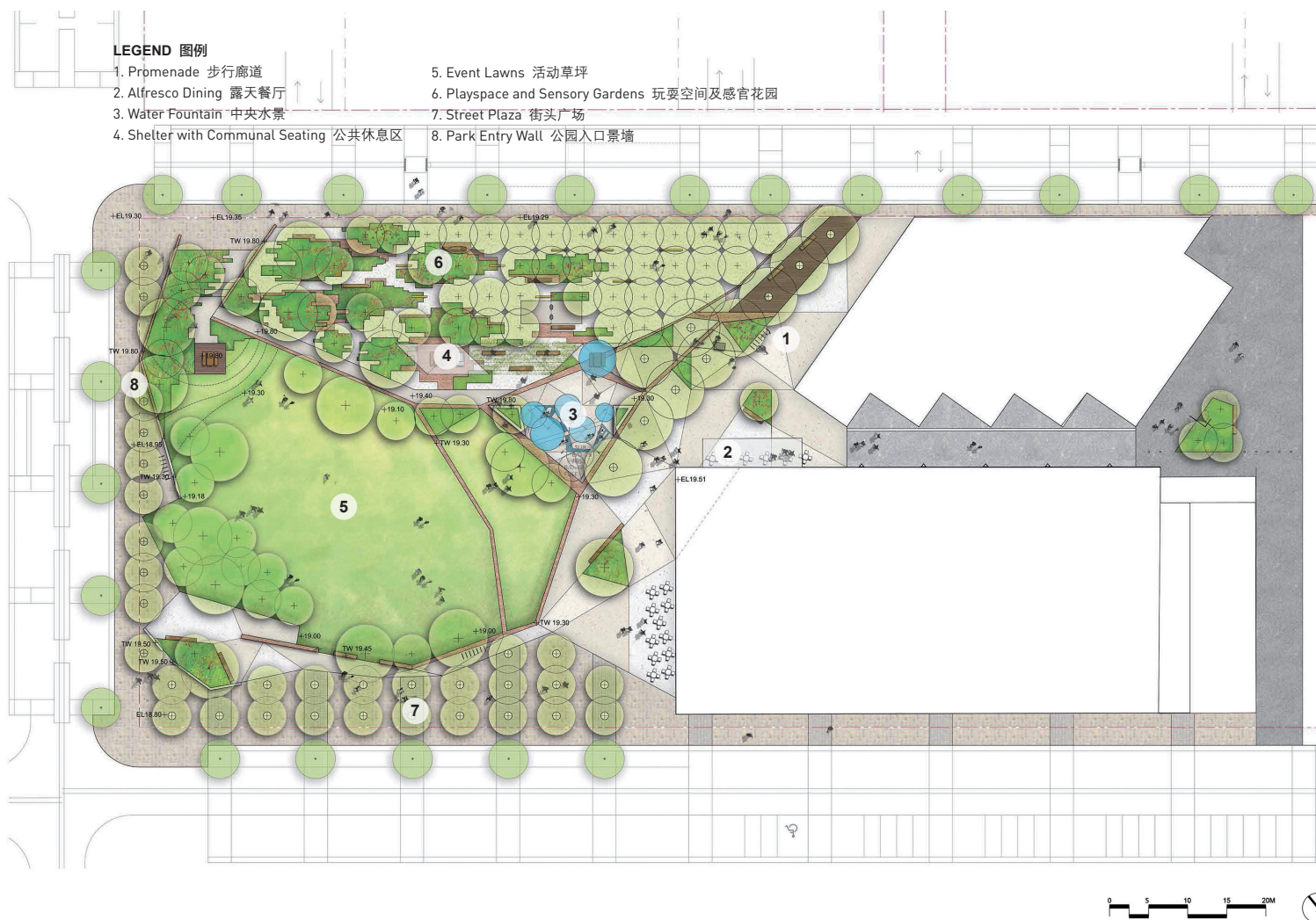
Sustainable Design; Public Space; Urban Infill Transformation; Community Engagement

整理 田乐

译 孙一鹤 田晓劼

EDITED BY Tina TIAN

TRANSLATED BY Robin SUN Xiaojie TIAN



项目地址:

澳大利亚阿德莱德市鲍顿区

项目面积:

5,600m²

项目委托:

南澳大利亚城市更新组织

景观设计:

澳派景观设计工作室

项目团队:

FMG 工程设计公司 (结构与水利工程)、Tonkin 顾问公司 (市政与雨洪工程)、Lucid 工程咨询公司 (灯光与电气工程)、澳大利亚景观工程服务公司 (景观施工)

设计时间:

2014年5月~2015年9月

施工时间:

2015年12月~2016年8月

建成时间:

2016年9月

LOCATION:

Bowden, Adelaide, Australia

AREA (SIZE):

5,600 m²

CLIENT:

Renewal SA

LANDSCAPE ARCHITECTURE:

ASPECT Studios

PROJECT TEAM:

FMG Engineering (Structural and Hydraulic Engineers), Tonkin Consulting (Civil and Stormwater Engineers), Lucid Consulting Engineers (Lighting and Electrical Engineer), Landscape Construction Services (Landscape Contractor)

DESIGN PERIOD:

May, 2014 ~ September, 2015

CONSTRUCTION PERIOD:

December, 2015 ~ August, 2016

COMPLETION TIME:

September, 2016

馆、每周市集、有机食品店和独立商店，并且定期举办活动。步行廊道作为一处重要的纽带，促进了公园和零售空间之间的互动——通过廊道，公共区域和商业区域真正紧密地结合在了一起。

在该项目中，澳派景观设计工作室致力于为该地区提供一片城市绿洲和探索目的地——一个与邻近的4号工厂美食广场、社区设施及周边街道网络无缝衔接的独特的城市公园。

为了满足人们的通行需求，并吸引他们驻足停留，公园被设计为一个集休憩、交际和娱乐为一体的场所，以及一处可供野餐、烧烤和欣赏水景的聚集地。作为公园倾力打

2. 鲍顿主公园总平面图
3. 鲍顿主公园鸟瞰效果图

2. Master plan of Bowden main park
3. Aerial view of Bowden main park

造的重点景观设施，一座喷泉被设置在路网的节点处，这是一个形式简单的旱喷设计，在定制的遮阳结构下方，呈星系状分布着9个喷嘴。水景四周还设有定制的座椅。人们可伴着随机舞动的喷泉一同跳舞、嬉戏，由此，这片公园的中心地带成为了活力四射的焦点。黄昏之后，LED灯通过各个喷嘴投射出各色光线，更为水景增添了一番趣味。

通过精心的设计，公园周边原来呆板的街道网络被拆分成一条条充满趣味的小路，吸引着游人从四面八方进入公园。由回收的红砖铺设而成的路面具有棱角分明的裂纹肌理，让人联想起从前维多利亚时代工人居住的屋舍，这些小屋在奇胜公司的厂房建成之前曾坐落在街道两旁。在公园的北缘，零散分布的植物和步道形成了一处迷宫，围合起一个独特的、完全由从码头回收的木材构成的儿童游乐空间，强化了公园设计期待提供一处探索之地的愿景。

公园内材料和色调的选用参考了当地的工业历史，“T”形钢结构及应用在整个墙面和路面铺装中的回收红砖均突显了工业美

学。钢结构和明亮色彩的运用重现了当年奇胜电器公司的辉煌景象。两块哑光混凝土铺路石以三角形图案排列，犹如一块缝合场地空间的“地毯”，吸引游客前来观赏中央水景。

公园内随处可见的定制座椅为人们提供了集会、倚靠、休憩和冥想的场所。自行车设施既为远道而来的游客提供了便利，也促进了鲍顿地区的可持续发展。此外，通过将场地周边的花园与茂密的树木相结合，不仅实现了营造花园绿洲的愿景，更有效地创造出一种能够缓解周边区域城市热岛效应的微气候。

对材料和场地几何形态的实验性运用不仅是对这一区域工业历史的纪念，更表达出了当代语境下鲍顿地区所具有的创造力和进取性等核心价值观。公园提供了一个精心设计的“舞台”，鲍顿居民可以亲身参与塑造这一不断变化的空间，整个大阿德莱德地区的人们都可以在这里寻找到全新的公共空间体验——这里有可供日常活动使用的开放草坪，众多可供聚餐聚会、艺术展示和玩耍嬉





© David Cann / Plant4Bowden
4

戏的设施。这个综合性的城市公园以其独特的方式增强了社会凝聚力，促进了人际交往。

合作和领导力

该项目在建造阶段中曾暴露出一系列问题，这主要归因于20世纪初以来，场地内的工人屋舍被长期占用，导致该地区不可控的城市开发愈演愈烈。因此，在整个建造阶段，设计方和施工方形成了紧密的合作关系，以评估建造方案的可行性。

项目落地过程以及别出心裁的场地布局和土地混合利用策略的成功实践均突显了卓越领导力的重要性。毗邻4号工厂大楼的鲍顿主公园是阿德莱德独有的土地混合利用案例，它为人们带来了全新的公共空间体验。在南澳城市更新组织鲍顿团队的领导下，澳

派景观设计工作室把控着公园的设计方向。通过与相关群体代表进行一系列设计研讨会，展现出了项目在探索突破性和试验性方法过程中的优势。

社区参与

公园坐落于鲍顿改造项目的中心地带，通过与州政府、地方政府及当地社区的长期合作，项目得以最终实现。在设计开发阶段，设计师定期与鲍顿社区相关团体举行会议。通过听取当地社区的意见，设计最大限度地实现了居民的愿景，创建了能够满足社区需求的多功能趣味空间。尤其值得一提的是，为了满足居民提出的拥有聚集空间的需求，项目通过整合一大片中央草坪和起伏地形，在场地中的核心区域营造出了一处可供居民开展各类活动的大型场所。

结语

随着鲍顿改造项目的顺利进行，公园始终秉持总体规划的目标：在区域中心建造一个活力四射的公共广场，柔化周边棱角分明的城市环境，使之成为阿德莱德中心商务区外围人口最稠密的城市地区中的花园绿洲。得益于与之毗邻的4号工厂的成功运作，公园深受欢迎，人们除了在4号工厂消费之外，也常在这里漫步、停留。尽管公园周边还未被开发，但从目前频繁的使用率就能够预见其未来的升值空间。随着时间的推移和人口的增长，公园将进一步展现如何通过周到、细致的设计连接人与人之间的关系，增强城市的社交和娱乐功能，并在不断发展的社区中营造一个真正适宜社区居民的场所。LAF

4. 鲍顿主公园成为阿德莱德中心商务区外围人口最稠密的城市区域中的花园绿洲。
 5. 中心草坪周边的花园为场地带来了生机，同时创造出一种能够缓解周边区域城市热岛效应的微气候。
4. Bowden main park offers a garden oasis which is to become one of the city's most densely populated urban districts outside the CBD.
 5. A fringe of gardens surrounding the central event lawns saturate the site with life, creating a responsive microclimate that mitigates the surrounding urban condition.

Introduction

The Bowden redevelopment is an ambitious urban infill project that has reclaimed 15 hectares of former industrial land, the old Clipsal electrical components company, transforming the site into a thriving new community of some 3,000 residents along with new retail and commercial premises.

Design Concepts and Strategies

Through an extensive master planning process undertaken by Renewal SA, the State Government development bureau, the project consists of the recreational area in a connected city street grid, an apartment mix from 3 up to 12 stories, and an interconnected series of parks. The street

topography is unique and progressive for Adelaide, identifiable by a conscious design approach to prioritize pedestrian movement and maximize the quality of the street as an integral part of the public realm, by adopting shared street design principles such as flush kerbs, rain gardens and extensive tree plantings throughout.

The original master plan by Taylor Cullity Lethlean (T. C. L) identified the Park as a formal town square within a new urban precinct. Respectful of the master plan approach in terms of the function of the park within its urban setting, the programming for the park required a combination of passive landscaped spaces including gardens, seating areas and shady grassed spaces with trees and more multifunctional spaces including open grassed areas that can be





6. 中央水景将光线投射到悬挂在上方的一系列圆盘上。
7. 水景成为公园的中心聚集区以及活力四射的焦点。
8. 遮阳结构的细节呼应了场地的历史。

6. The central water feature reflects light on a series of circular disks suspended above.
7. A field of water jets acts as a central gathering space and point of focus.
8. Details of the shade structure reflect the site's history.



© ASPECT Studios
7



© ASPECT Studios

used for larger events and a pedestrian promenade that acts as a threshold. The promenade connects the park to the retail precinct — Plant 4, which has been repurposed as a foodie destination, with eateries, weekly produce markets, organic traders and indie stores, as well as regular events. The importance of this connecting strip cannot be understated. The interface between the Park and retail space is unique — a truly connected public realm and commercial precinct zipped together along the promenade.

ASPECT Studios' approach to the site focused on a desire to provide an oasis of green and a place of discovery — a unique urban park seamlessly integrated with the adjacent Plant 4 Food Markets and community facilities, as well as the surrounding street network.

Designed not only to draw people through, but also to attract them to linger,

the Park has become a place of relaxation, social connection and recreation. A long shelter with picnic and barbeque areas and a field of water features act as a central gathering space. As a key investment in the Park, a water fountain is located at the nexus of the path network, designed as a simple splash pad with a series of 9 jets arranged in a stellar pattern under a bespoke shade structure. Surrounded by custom seats, the water feature is programmed for visitors to dance and play with a random pattern of fountains, creating an ever changing dynamic focal point and attraction in the heart of the park. LED lights project up through each jet, creating a beautiful patinae and further extending the attraction of the park as a destination beyond nightfall.

A deliberate design strategy was taken to deconstruct the formality of the surrounding street network by providing a fractal network



© ASPECT Studios

of pathways which invoke a sense of the playfulness, whimsy and delight, inviting people into the park from all directions. The angular geometry is reinforced by “cracks” in the pavement that reveal recycled red bricks, reminiscent of the former Victorian workers cottages which lined the streets prior to the site’s occupation by the Clipsal factory. The notion of discovery continues via a labyrinth of scattered plants and pathways along the northern edge of the park, enclosing a unique children’s play space constructed entirely of recycled jetty timbers.

The materials and tones reference the site’s industrial past, informing an industrial

aesthetic of steel “T” beams for structures and the use of recycled red brick both as a wall finish and paving surface throughout. The use of steel and pops of color recall the days when the Clipsal electrical supply plants dominated the site. Two muted honed concrete paving stones laid in a triangulated pattern provide a carpet that stitches the site together, leading visitors to the central water feature.

Extensive informal and bespoke seating throughout the park provides numerous opportunities for gathering, leaning, resting and quiet contemplation. Bike facilities provide an additional utility for visitors from

9. 回收的红砖及码头木材，以及迷宫的设计强化了设计一处探索之地的愿景。
10. 材料和色调的选用参考了当地的工业历史。
9. The overriding narrative of a place of discovery is reinforced through recycled red bricks, reclaimed jetty timbers and a labyrinth.
10. Details of materials and tones reference the site’s industrial past.

further afield and reinforce the Bowden sustainability initiatives. In addition, the concentration of gardens around the perimeter of the site in combination with a saturation of trees achieves the vision of a garden oasis, effectively creating a microclimate that tempers the urban heat island effects of the surrounding streets.

The experimental use of materials and site geometries not only is a nod to the site's heritage, but also consciously projects the site as a contemporary expression of the Bowden Village's core values of creativity and progressive thought. It provides a well-conceived canvas upon which the people of Bowden can mould into an ever changing space of their own making. What the people of Bowden and those from greater Adelaide can find here is a whole new public realm experience — a place with open lawns for informal play, with generous facilities for gathering, art, play, and delight; an integrated and distinct urban park that is centered on promoting social cohesion and interaction.

Collaboration and Leadership

Construction phase of the project presented its own series of issues, primarily due to the presence of uncontrolled fill as a result of many years of use across the

site from workers cottages in the early 20th century. As a result, a close collaborative relationship between the design and construction teams was formed to assess solutions to constructability throughout the construction phase.

The project also demonstrates leadership through the process of delivery and its successful experimentation with unconventional site layout and land use mixes. The direct interface with the Plant 4 building is a unique land use mix for Adelaide and delivers an exciting new public realm experience. Under the leadership of Renewal SA's Bowden team, ASPECT Studios steered the direction of the park design, illustrating the benefits of a more unconventional and experimental approach to the site through a number of design workshops with the reference group members.

Community Engagement

Situated in the heart of the Bowden Redevelopment, the Park has been delivered through a long process of engagement between State and Local Government as well as the local Bowden community. Regular meetings were held with the Bowden Community Reference Group throughout the design development phase. By listening to the local community, the design delivers on

their aspirations, providing a multifunctional and intriguing space that best fit for the community's needs. In particular, the need to create a usable gathering space was identified and helped shape a reconfiguration of the site with a large central lawn with mound forming a key part of the site.

Summary

With the Bowden development project well underway, this park delivers on the master plan objectives of creating a vibrant public square in the heart of the site, offering relief from its hard-edged urban surroundings; a garden oasis which is to become one of the city's most densely populated urban districts outside the CBD. Aided by the success of the adjacent Plant 4, the park is highly frequented and provides a place for visitors to linger beyond the shopping experience. Even prior to development occurring around the park, the intensity of use gives an insight into just how valuable this space will be. With time and an increased population imminent, the park will demonstrate how thoughtful and considered design can connect people, enhance the social and recreational fabric of the city, and provide an authentic destination within an establishing community. **LAF**

