

收稿时间 / Received Date | 中国分类号 / TU986.2
2014-12-09 | 文献标识码 / B

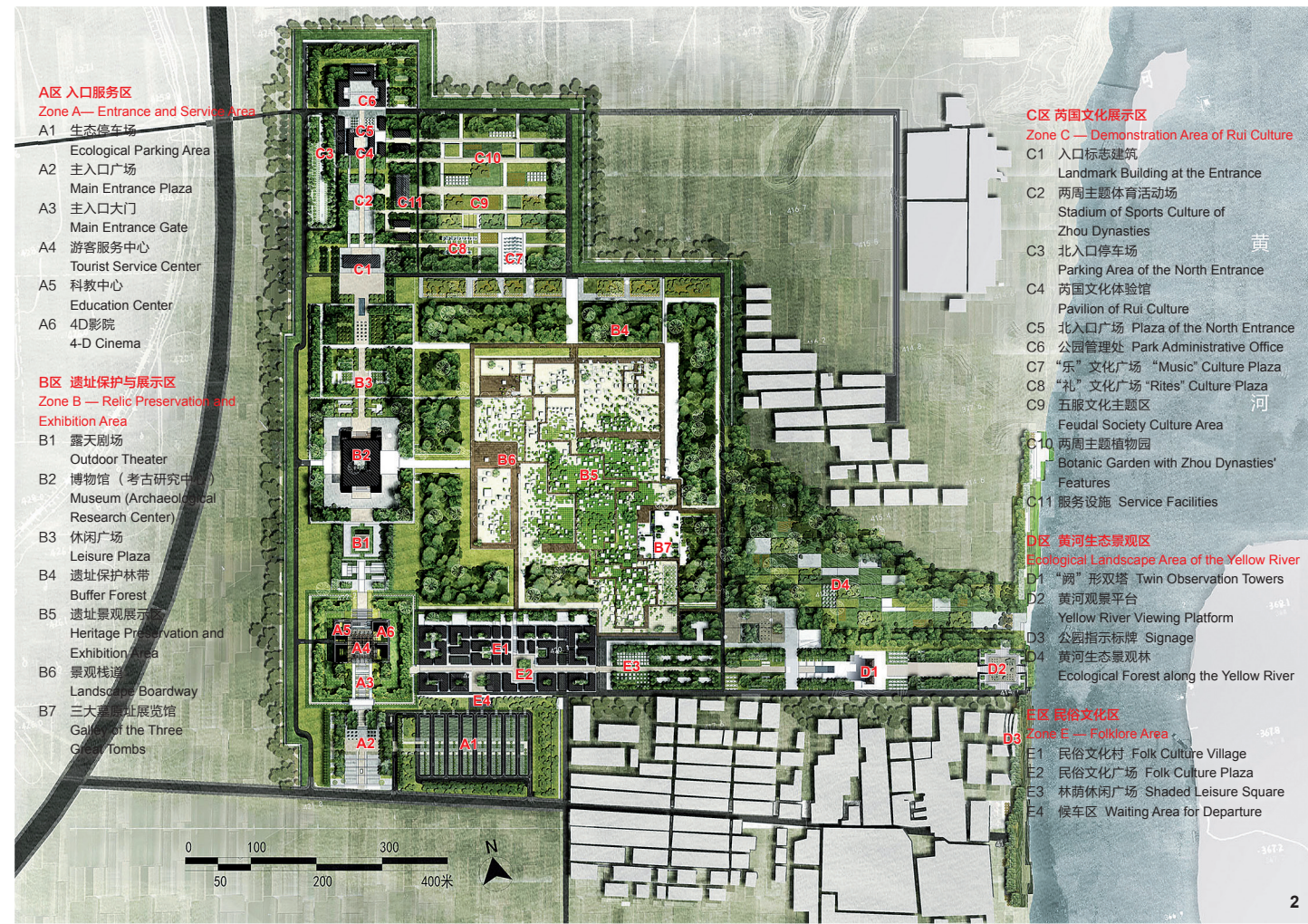
陕西省韩城市梁带村国家遗址公园概念规划 Concept Planning for the Liangdai Village National Relics Park in Hancheng, Shaanxi

余定, 胡彦 / Ding YU, Yan HU
整理 Edited by / 田东 Tina TIAN
翻译 Translated by / 陈立欣 Connie CHEN
校对 Proofread by / 郑英华 Yehua CHENG

项目地址: 陕西省韩城市
项目面积: 约65hm²
项目委托: 梁带村遗址管理处、梁带村遗址博物馆筹建处
规划与景观设计: 澳大利亚IAPA设计顾问有限公司
首席设计师: 彭勃
设计团队: 余定、胡彦、杜明芳、黄卫建、张哲、Joan Sague Cassany
设计时间: 2012年

Location: Hancheng, Shaanxi Province
Area (size): Approximately 65 hm²
Client: Liangdai Village Heritage Management Council, Construction Preparation Office of Liangdai Village Heritage Museum
Planning and Landscape Architecture: IAPA
Chief Designer: Paul Bo Peng
Project Team: Stonay Yu, Yan Hu, Mingfang Du, Weijian Huang, Zhe Zhang, Joan Sague Cassany
Design Period: 2012

1. 梁带村国家遗址公园鸟瞰图 © IAPA
1. Bird-eye view rendering of the Liangdai Village Relics Park © IAPA



2. 总体规划平面图 © IAPA
3. 五大分区示意图 © IAPA
4. 总体规划概念构思 © IAPA

2. Master plan © IAPA
3. Zoning plan © IAPA
4. Planning concept © IAPA

摘要

2012年, IAPA以其综合了人文遗址保护与展示、景观规划、旅游规划等方面的设计方案, 赢得了陕西梁带村国家遗址公园的国际竞赛。该方案旨在将梁带村遗址公园打造成为一个能够全面展示梁带村两周文化、韩城地域文化、黄河文化的遗址公园。

关键词

墓葬遗址; 人文遗址保护与展示; 旅游规划; 景观规划; 建筑设计

Abstract

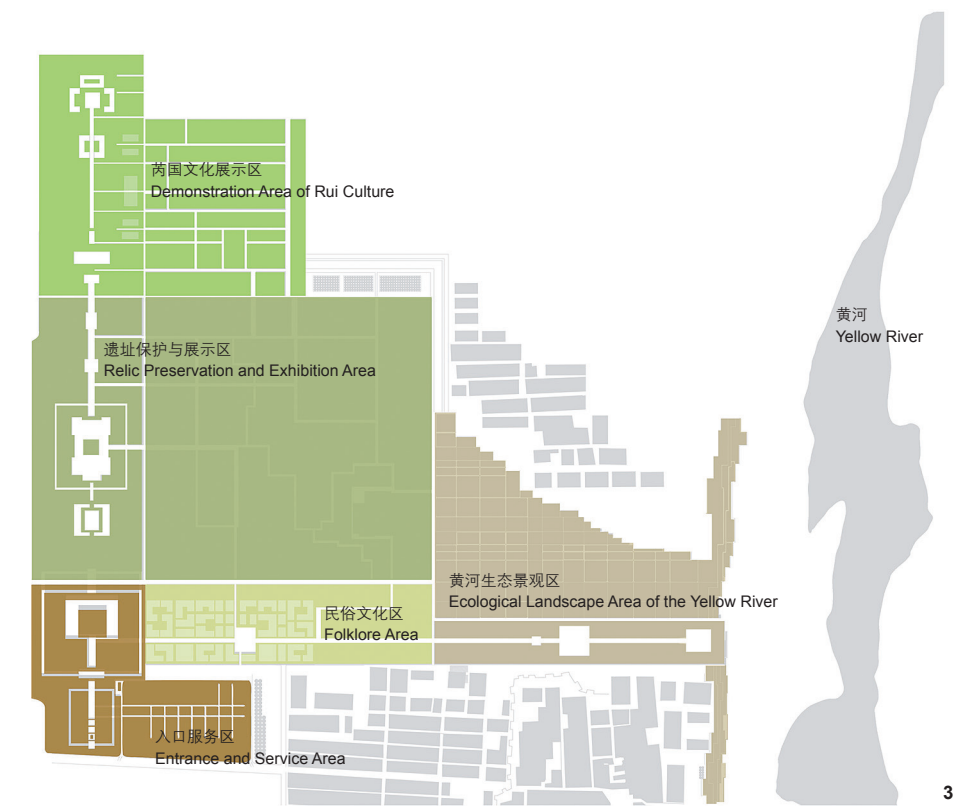
In 2012, IAPA won the international competition of Liangdai Village National Relics Park in Hancheng, Shaanxi. Their winning scheme integrates various perspectives — including cultural relics preservation and exhibition, landscape planning, tourist planning and architectural design. The design proposal aims to transform Liangdai Village Relics Park into a comprehensive one, which represents and demonstrates its rich historic heritage — culture of Eastern and Western Zhou dynasties in the site, regional culture of Hancheng and the Yellow River culture.

Key words

Tomb Heritage; Cultural and Historical Heritage Preservation and Exhibition; Tourism Planning; Landscape Planning; Architecture Design

项目背景与场地介绍

韩城, 古称龙门, 地处关中平原东北部, 滨黄河之西, 历来为兵家必争之地, 是一座具有深厚历史文化积淀的国家历史文化名城。远在5万年前, 韩城地区就有

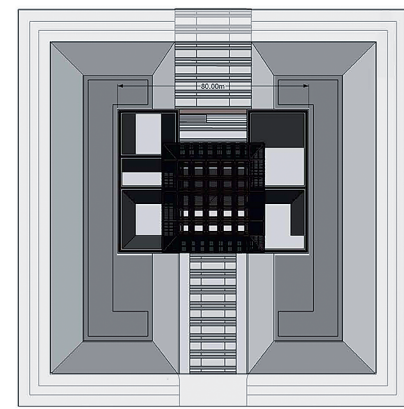
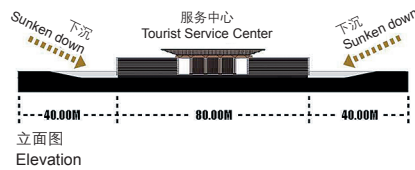


人类活动的足迹, 拥有距今4 000~6 000年的仰韶文化和龙山文化遗址数十处, 秦汉、唐宋、金元、明清各时期的遗址亦相当丰富。

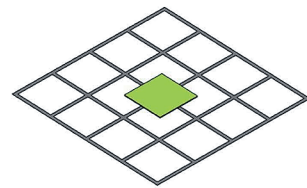
梁带村遗址位于陕西省韩城市区东北

7km处黄河西岸的高台上, 拥有两周之际诸侯级大型墓葬7座、士大夫级中型墓100余座、一般平民墓1 100余座。墓地区略呈长方形, 东西长600m, 南北宽550m, 总面积约33hm²。梁带村国家遗址公园的建造

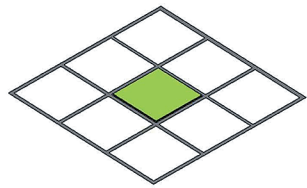




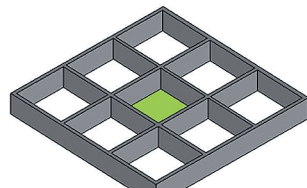
平面图
Plan



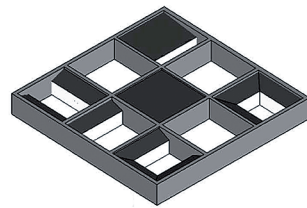
周朝建筑形制
Form and layout of a typical
Zhou courtyard



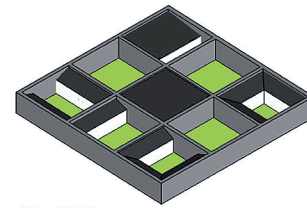
简化成3X3方块
Simplifying as 3 X 3 boxes



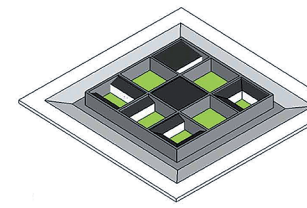
拉伸成立体空间
Adding walls



加入建筑功能体块
Adding functions



加入绿化庭院
Adding landscape spaces



整体置入下沉空间
Placing the building into the
sunken space

5

5. 游客服务中心设计理念 © IAPA

6. 遗址保护与展示区鸟瞰图 © IAPA

7, 8. 遗址保护与展示区墓葬群遗址保护与展示示意图 © IAPA

5. Design scheme of the tourist service center © IAPA

6. Bird-eye view rendering of the Relic Preservation and Exhibition Area © IAPA

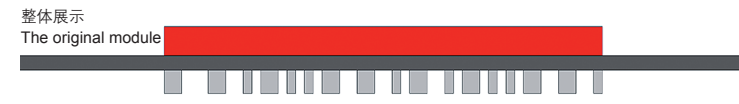
7, 8. Preservation and demonstration diagram of the tomb complex in the Relic Preservation and Exhibition Area © IAPA



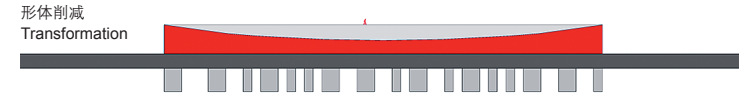
6



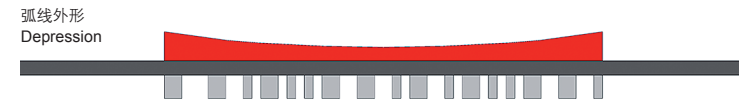
覆土保护
Protection with earth-filling



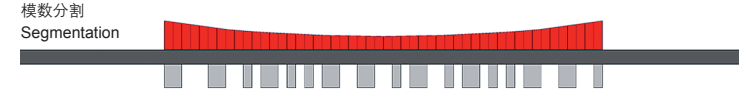
整体展示
The original module



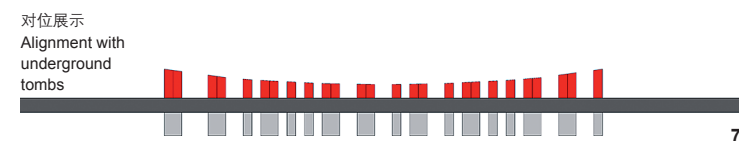
形体削减
Transformation



弧线外形
Depression



模数分割
Segmentation



对位展示
Alignment with
underground
tombs

7

平面分布
Tombs
corresponding
locations
above-ground

形体与视线
Transformation
to depress the
center at the
height of eye
level

保护与展示
Segmentation
of the modules
to conduct the
alignment with
underground
tombs and
demonstrate
their real-
life scale and
positions

游览栈道
Touring paths

绿色景观
Landscape space

墓葬区
Overlaid plan

对了解和研究陕西及黄河沿岸周代的考古学文化、西周晚期至春秋时期的墓葬制度及社会历史等都具有重要意义。

项目设计面积约65hm²，场地总体上较为平坦，设计范围内有大片的麦田。在黄河的影响之下，在场地东侧形成了一条长带状的坑地。除此之外，场地内还包括村落、铁路、公路、高压线塔等要素。

总体规划框架与分区

规划方案中首先设定一条南北轴线，以保证重要服务设施设置在建控区范围

内；其次，有节奏地设置主要服务设施，并预留与东部节点之间的潜在联系；再次，西部南北轴线与东部三大块地形成E字形空间排列；然后，各地块之间通过交通与视廊加强链接；进一步形成南部、中部、北部等三大功能片区；随后对各节点进行深化，形成最终较为完整的总体规划概念。

在上述规划框架的基础上，梁带村遗址公园大致形成了“两轴五区”的空间格局。通过轴线加强各个功能区的相互联系，公园的重点项目井然有序地分布于两

条轴线之上，形成极为严整而富有变化的空间序列。

该遗址公园包括5个分区，分别为入口服务区、遗址保护展示区、芮国文化展示区、黄河生态景观区，以及民俗文化区。

1 入口服务区

入口游客服务区占地约8hm²，包括南入口广场、公园大门、生态停车场及游客服务中心等旅游配套设施，并通过绿地空间形成遗址保护区域向外围农耕区的景观过渡，并为游客提供休憩场所。

2 遗址保护与展示区

遗址保护与展示区占地约32hm²，以梁带村墓葬群的保护为重点，通过各种方式展示两周墓葬的布局与形制。区内设有露天剧场、遗址博物馆、林荫广场、核心遗址区、游览木栈道、三大墓原址展示馆等配套设施。

遗址博物馆位于南北轴线的中部，东面正对核心遗址区，并通过景观道路与遗址区直接相连。博物馆的设计以古代四合院形式为原型，外廓形成60m×60m的方形格局，中央形成内部庭院。采用艺术手法对梁带村出土文物造型进行简化，提炼其轮廓，变形为外立面，使整座建筑折射出浓厚的西周文化特色。一方面，博物馆内部的游客可以鸟瞰遗址区景观，另一方面，在博物馆外围形成绿地围合与开敞空间，既实现了建筑内外的过渡，同时也充分满足了交通组织及人流集散的需要。

核心遗址区位于被其他各区所环绕的公园中部，显示了在整体规划中的核心地位。核心遗址区规划坚持“保护第一”的原则，主要包括以下策略：

(1) 对遗址实行全面整体保护，在遗址考古发掘完成后，对遗址进行统一覆土回填，尽量在遗址区未发现墓葬的区域进行绿化种植，其他区域则可采用人工树箱的方法防止植被根系对地下遗址造成破坏。

(2) 遗址的展示，根据其规模的不同，通过恰当设计景观空间、文化标识、游览栈道系统，加之高程的多样变化，将带给游客极为丰富的游览体验。

(3) 梁带村墓葬群有着地下墓葬达千余座的惊人数量，并有令人叹为观止的艺术珍品埋藏其中。我们的挑战在于如何运用现代的艺术手法加以展示，规划对此作出如下回应：1) 以原遗址的覆土保护为基础，地面以上采取与地下遗址相对应的景观盒进行整体展示；2) 景观盒的设计，是经过体块的逐步消减演变得出的，消减的第一步是形成人视高度的立面层次，构成中间低、外围高的弧形界面；3) 接下来再进行模数分割、完成与地下墓葬的对位，达到对地下遗址真实的规模和位置展示；4) 最终，在展示遗址宏大规模的同时，加入游览栈道、绿化景观等元素，构成一幅当代蔚为壮观的遗址文化图景。

3 芮国文化展示区

芮国文化展示区占地约11hm²，通过文物复制、工艺品制作、游客体验等方式充分再现西周芮国文化场景。

4 黄河生态景观区

黄河生态景观区占地约9hm²，位于园区东部，设有露台、黄河观景平台、朝

向黄河的公园标识景墙，以及黄河生态景观林等设施，以供游人饱览黄河的宏伟胜景。此外，方案试图通过层进式的生态台地，解决目前黄河坑地的保护和景观修复问题。

5 民俗文化区

民俗文化区占地约5hm²，位于园区南侧，旨在通过民俗商业街区结合民俗广场的设置，集餐饮、娱乐、休闲、购物、文艺表演、小型酒店等服务为一体，从而进一步满足游客的体验需求。

结语

IAPA于2012年赢得陕西梁带村国家遗址公园的国际竞赛，该项目随后陆续动工实施，目前已完成南北文化中轴线的初步建设。该项目完整保护梁带村遗址的遗迹本体、整体格局和历史环境风貌，逐步把梁带村遗址规划建设成为具有“真实性、可读性和可持续性”的历史文化遗产保护与展示区，从而体现遗址的历史价值和科学艺术价值，充分发挥梁带村遗址在区域社会发展和经济发展中的促进作用。LAF

致谢

非常感谢澳大利亚IAPA设计顾问有限公司艺术总监刘君先生的大力支持与协助。



9. 遗址保护与展示区墓葬群遗址地面展示效果图 © IAPA
10. 博物馆效果图 © IAPA
9. Demonstration rendering of the tomb complex in the Relic Preservation and Exhibition Area © IAPA
10. Rendering of the museum © IAPA



10

Project Background and Site Context

Hancheng, known as Dragon Gate in ancient time, is located in north-eastern central Shaanxi Plain. Expanding along the west of the Yellow River, this is the place of militarily strategic importance and a national historic cultural city with profound history and cultural accumulations. Hints of human activities can be traced back 50,000 years ago, and it has more than ten relics of Yangshao and Longshan Culture dated back to 4,000 ~ 6,000 years ago as well as abundant relics from Qin, Han, Tang, Song, Jin, Yuan, Ming and Qing Dynasties.

Liangdai Village Relics is situated on the high land of the west bank of Yellow River, 7 km north-east of the urban area of Hancheng, Shaanxi province. There are seven large-scale tombs of feudal kings, more than 100 tombs of scholar officials and more than 1,100 civilian tombs. The rectangular tomb

complex, measured 600 m from east to west, 550 m from north to south, covers a large area of 33 hm² in total. The establishment of this park bears great significance in understanding and studying archaeological culture of Zhou Dynasties in Shaanxi and the Yellow River valley, the tomb culture and society, and the history from late Western Zhou Dynasty to the Spring and Autumn Period.

The project covers an area of 65 hm²; the general topography is flat, the site is encompasses large area of wheat field. Under the influence of Yellow River, a belt-shape pit is formed at the east of the site. Besides, there are elements of village, railway, highway and pylons.

Planning Framework and Zoning Strategy

First, an axis from north to south was designed in the plan to guarantee that the

important service facilities were included within the control area. Secondly, the main service facilities are planned strategically, and potential linkage with eastern nodes are reserved. Thirdly, north-south axis in the western area forms an E-shape space with three major lands to the east. And then, the connections of individual parcels are strengthened through traffic and visual corridors to form three major function areas as the south, center, and north. Lastly, nodes are strengthened to form a relatively complete concept for the master plan.

Based on the planning framework above, Liangdai Village Relics Park comprises of a space layout of “two axes and five zones”. The connection of individual function area is strengthened through axes on which key programs are aligned to form an organized yet dynamic spatial series.

The “five zones” includes: entrance and

service area, relic preservation and exhibition core area, demonstration area of Rui culture, ecological landscape area of Yellow River, and folklore area.

1 Entrance and Service Area

Entrance and service area covers 8 hm², including tourist supporting facilities, such as south entrance plaza, park gate, eco-parking lot and tourist service center. It provides relaxing space for tourists through landscape transition from the relic protection and exhibition area to outer layer of farm land formed by green space.

2 Relic Preservation and Exhibition Area

This area occupies 32 hm², focusing on the preservation of Liangdai Village Tomb Complex and demonstrating the tomb layout and forms in Eastern and Western Zhou Dynasties. There are supporting facilities, including outdoor theater, relic museum, boulevard, core relics, boardwalks and original sites of three great tombs.

The museum locates in the center of

the axis from north to south, facing core relics and connected with the relic area through landscape avenues. The design of the museum takes after the prototype of the ancient courtyard. The outline is in a square form of 60 m × 60 m; the center forms an inner courtyard. Artistic expression is adopted to simplify the styling of cultural relics and transform it into facade to make the architecture full of culture feature of Western Zhou Dynasty. On one hand, tourists can enjoy panoramic view of the whole site from within. On the other hand, the green space enclosure and open space are formed to realize the transition between the interior and exterior space of the building. Meanwhile, the needs of traffic and pedestrian organization are met.

The core area locates in the center of the park, highlighting its key role in the entire site. The design of the core area sticks to the principle of putting protection in the first place, including the following strategies:

(1) In order to conduct full protection over the site, backfill after the excavation and

plant trees at the undeveloped tomb areas. Movable tree boxes are adopted in other areas to prevent damage to the underground relics caused by the roots.

(2) According to the various scales, the exhibitions of the relic sites will bring visitors a wealth of touring experiences, through appropriate landscape spatial design, cultural signage, touring road system and dynamic topographical elevations.

(3) Liangdai Village tomb complex bears over a thousand underground tombs in which breath-taking artifacts were buried. The challenge we are facing is how to demonstrate them in modern artistic means. The planning responds to this in following perspectives: 1) based on earth-filling protection, landscape demonstration boxes are installed above-ground for overall demonstration in correspondence with the underground heritages; 2) the design of landscape box is determined through successive transformation of mass blocks. First step of the transformation is to create a vertical layer at the height of eye level which as result,



12

forming an arc interface that is depressed in the center and elevated at the periphery; 3) segmentation of the modules is conducted and the alignment with underground tombs is completed to realize real-life scale and position of the exhibitions; 4) finally, add touring paths and landscape elements in the exhibitions to compose a grandiose cultural heritage view.

3 Demonstration Area of Rui Culture

Covering an area of 11 hm², Rui culture scenes are fully represented through relic replication, art craft manufacture and tourists experience.

4 Ecological Landscape Area of the Yellow River

Ecological landscape area of Yellow River covers 9 hm² and sits in the east of the park, providing visitors with multiple facilities such as observation tower, view platform, signature landscape wall and eco-landscape forest along riverfront so that they can appreciate the spectacular views of the Yellow River. In addition, the plan attempts to promote the protection of bottomland of the Yellow River and landscape restoration

through progressive ecological terraces.

5 Folklore Area

The folklore area, covering about 5 hm², locates in the south of the park. In order to meet visitors demand, the plan integrates a variety of services including catering, entertainment, relaxation, shopping, performing arts and small-scale hotels through the design of a folklore commercial corridor and folklore plaza.

Conclusion

IAPA was awarded in 2012 the winner of the international competition of Liangdai Village National Relics Park in Hancheng,

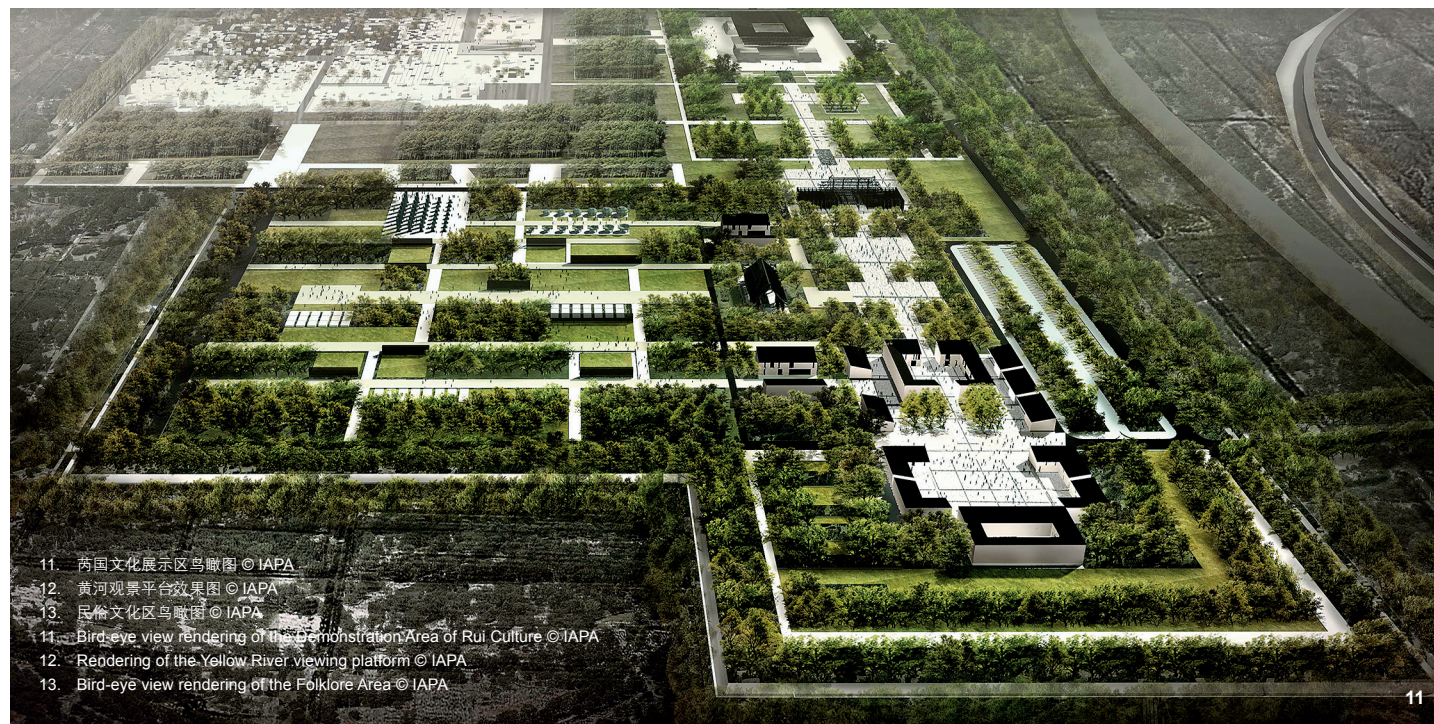
Shaanxi. The project is carried out subsequently and the primary construction of cultural axis from south to north has been completed. The local relics, overall layout and historic landscape sceneries are fully preserved. The Liangdai Village Relics is planned to be “real, readable, and sustainable” historic culture heritage preservation and demonstration area to embody the historic and scientific values of the relics and stimulate the regional social and economic development. **LAF**

ACKNOWLEDGEMENTS

Many thanks to Mr. Michael Liu, art director of IAPA, for his great helps and coordination.



13



11

11. 芮国文化展示区鸟瞰图 © IAPA
12. 黄河观景平台效果图 © IAPA
13. 民俗文化区鸟瞰图 © IAPA
14. Bird-eye view rendering of the Demonstration Area of Rui Culture © IAPA
12. Rendering of the Yellow River viewing platform © IAPA
13. Bird-eye view rendering of the Folklore Area © IAPA