



收稿时间 / Received Date | 中图分类号 / TU986.2  
2014-06-20 | 文献标识码 / B

## 2014青岛世界园艺博览会“论道”展园

### The Lun Dao Garden at the International Horticultural Exposition 2014 Qingdao

润衡集团 / Runheng Group

翻译 Translated by /  
孙一鹤 Robin SUN  
整理 Edited by /  
田乐 Tina TIAN

摘要 ……

“论道”展园项目基于设计师对生活的观察和对大自然的尊敬，以生态环保的设计理念，将多维度的空间层次与人们的活动结合起来，营造了可承载不同行为的空间场所；并以“高椅、长桌花园、植物秀场”为设计主题，力求通过探索出更多对传统景观设计思维具有颠覆性的设计方法，使“论道”展园成为一件具有时代特征的标志性景观作品的同时，也成为一项事件性景观设计的宣言。

关键词 ……

论道；高椅；长桌花园；植物秀场；事件性景观

Abstract ...

The Lun Dao Garden takes inspiration from the life and respect to nature, ecological protection, and human activity to create a space that supports a variety of functions. With the theme "High Chair", "Garden Table", and "Plant Show", the garden seeks to explore more design methods than seen in traditional landscape design. The Lun Dao Garden is an iconic event landscape design.

Key words ...

Idea Exchange; High Chair; Garden Table; Plant Show; Event Landscape

项目地址：中国青岛市百果山森林公园  
 项目面积：2 000m<sup>2</sup>  
 项目委托：青岛世园会组委会  
 景观设计：润衡集团  
 首席设计师：陈丰、周艳阳  
 项目团队：白云湃、何芳、罗杰  
 设计时间：2013年12月

Location: Baiguoshan Forest Park, Qingdao, China  
 Area (size): 2,000 m<sup>2</sup>  
 Client: Qingdao International Horticultural Exposition Bureau  
 Landscape Architecture: Runheng Group  
 Chief Designers: Feng Chen, Yanyang Zhou  
 Project Team: Yunpai Bai, Fang He, Jie Luo  
 Design Period: December, 2013

1. 现实生活中的桌椅尺度经过夸张的表现，带给游客既熟悉而又新奇的体验。
2. 平面图



## 项目背景

作为2014青岛世界园艺博览会（世园会）的受邀单位之一，润衡集团设计并建造了“论道”展园。首席设计师陈丰与周艳阳旨在用该项目记录这一景观事件，并同时创建人与自然融合相处的理想空间环境。

## 设计主题

目前，景观设计多以静态的、二维的视觉空间思维模式为主，缺乏创新性的空间营造手法，并一味使用昂贵的建造材料，缺乏对场所记忆的挖掘、对环保回收材料的利用，以及设计哲学的思辨。事实上，当代景观不仅是一种真实记录行为活动和感知空间的载体，更应该是一个主动推进事件发生、发展和改善人居环境

的加速器与主导者。

展园将通常意义上的思辩讨论场景引入到大自然当中，并结合场地环境中的天空、光线、花香、鸟语、游人等，构成可供人们冥想、思考的景观空间，促使人们积极参与、互动交流。因此，本展园不仅是推广绿色科技的论坛区域，更是学术思想交流的“论道”园地。

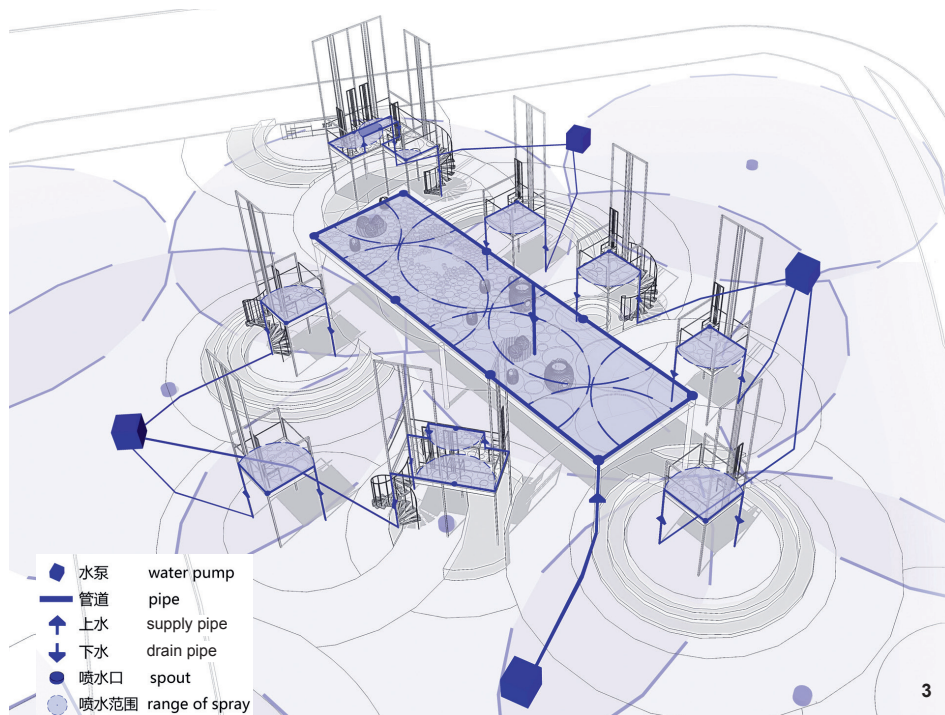
## 高椅

“高椅”作为本展园的主要活动区，其设计灵感来源于从孩童的视角来看座椅所获得的不同感受。原本常规的座椅尺寸对于不到两岁的孩子来讲，是一种高大的、触手却不可及的庞然大物。由于感官者的不同，同一事物的功能和性质也产生了变化。

园中高椅是按2m × 2m × 3m的单元模数来设计的，并且通过单元的变化组合，构成不同尺度的空间。其中有6张一个单元模数的高椅，可供单人游客进行冥想、眺望。还有两张“椅中桌椅”：一张两个单元模数的较小尺度空间，可供两三游人说学论道；还有一张三个单元模数的较大尺度空间，可满足五六个人的交谈活动。

## 长桌花园

展园中的长桌花园是将生活中餐桌的场景搬到户外，通过转换人与动物交流的视角，在多个空间层次中展开对话，将整个环境的气氛调动起来，以形成高椅中的凭栏远眺——通过石材和植物巧妙的搭配，打造出一个禅意的花园；形成长桌的



静怡栖息——创建多浆类植物和蝶类昆虫的栖居地，营造出一个迷你生态园；形成镜面下的“观影”体验——顶棚的镜面不仅能够“播放”出游客和景物的变幻影像，记载着穿梭在花园中的各种行为活动，还兼具遮光避雨的廊架功用。

#### 植物秀场

青岛这座海滨城市，拥有丰富的植物物种。展园将图解式索引的概念引入场地种植设计之中，形成具有科普教育功能的“植物图书馆”，满足人们对花草树木认知和学习的需要。

展区以缤纷多彩的“花毯”作为设计语言，以研究植物花卉组合搭配的生态性为目的，不仅上演了一场展示植物本身魅力的植被“时装秀”，更让植物成为场地中的主角之一，并与人发生互动。

#### 材料运用

展园的设计理念和搭建从低碳、环保的角度出发，所用耗材均为就地回收再利用的钢管和被替换下来的景观碎石。上下水的设计结合桌椅的腿径，实现了节约型灌溉和排水。乔木植物的选择均以乡土树种为主，打造出易于生长、便于养护、合理避免病虫害的生态花园。

#### 结语

“论道”展园以一种非传统的设计视角，创造出一个人与人、人与事件、人与自然近距离、多维度、多序列和多方式沟通的场所，塑造了具有动态感受的场景，给予游人全新的空间感知体验，使“论道”展园成为一件具有时代特征的标志性景观作品的同时，也成为一项事件性景观设计的宣言。LAF



## Project Background

The Lun Dao Landscape Garden, designed and built by the Runheng Group, was one of the invited gardens for the International Horticultural Exposition 2014 Qingdao. Feng Chen and Yanyang Zhou, the chief designers, explained that one of the goals of the garden was to record the event of the expo while simultaneously creating an environment that integrated people, nature, and landscape.

## Design Elements

The Runheng Group sought to create a garden for the expo that moved beyond static, two-dimensional patterns. In contrast to other Chinese landscape projects that use unsustainable, expensive materials yet little creativity can be found, the group wanted to design a garden that would explore site memories and use recycled materials as a way of generating philosophical speculation about design. In this way, contemporary landscape would become a tool for recording activities and response to spatial perception. Most importantly, landscape would promote individual self-awareness and improve the ecological environment of human beings.

In a creative way, the garden develops scenarios for exchange and communication as a combination of sky, light, flowers, birds, and people that form a unique site environment. The garden develops a landscape for



3. 景观喷灌系统图，所有的管线都巧妙地布设在桌椅腿中。
4. 在论道园中，所有的家具都形成了对话关系。
5. 高椅上的桌、椅、人的空间组合构成了论道的平台。
6. 花毯地景、观景椅面、山水桌面和生态长桌构成了4层立体花园。
7. 长桌椅的家具亦可作为未来生物栖息的居所。
3. Landscape irrigation system: all the pipelines are set in the legs of the table and chairs.
4. In the Garden, spatial dialogues are created through the furniture arrangement.
5. The chairs, the table, and people, as three essential elements, collectively form the sense of space for idea exchange.
6. The four-story vertical garden is comprised of a flower carpet, a viewing chair platform, a tabletop garden, and a large ecological table.
7. The table and chairs can serve as future habitats.

meditation and reflection, perception and interaction. The garden incorporates three major design elements: high chairs, garden table, and plant show. It is more than a platform for promoting green technologies, it is a garden for the exchange of ideas — individually and collectively.

### High Chairs

Inspired by the unique, child-like feeling of seeing a chair, the main garden element is a series of high chairs. The feeling of

wondering and smallness from seeing a chair is subjective; it varies from person to person and alters your relationship with the ground by shifting your perspective views.

The high chairs in the garden were designed as in modules, each measuring two meters long by two meters wide by three meters tall. As the units change, so do the scales, and therefore views of the garden. There are six sets of single-module chair and each of them is available for a single tourist to

meditate and overlook. Additionally, there are two chair-in-chair modules. One is made up of two modules that form a smaller space for two or three people, and another is a triple-module space large enough to accommodate five or six people.

### The Garden Table

A long outdoor table was used in the same way as a central dining table. The idea of a large table, featured prominently in the garden, shifts people away from a fixed



standing perspective, and allows engagement with the environment through multiple spatial layers. There are high chairs for leaning and overlooking, a Zen-like collection of stones and plants, and long tables for rest and interaction. Succulent vegetation and butterflies form a mini ecological garden, and mirrors reflect surface experience, hopefully providing a lens for introspective experience. The mirrors display visitors and scenes, witness activities, and serves as shelter from sun or rain.

### Plant Show

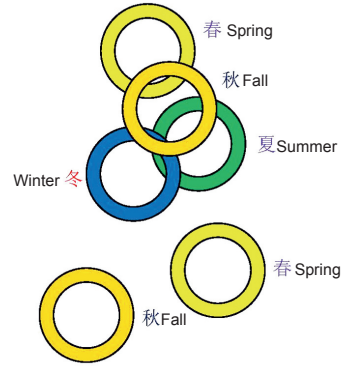
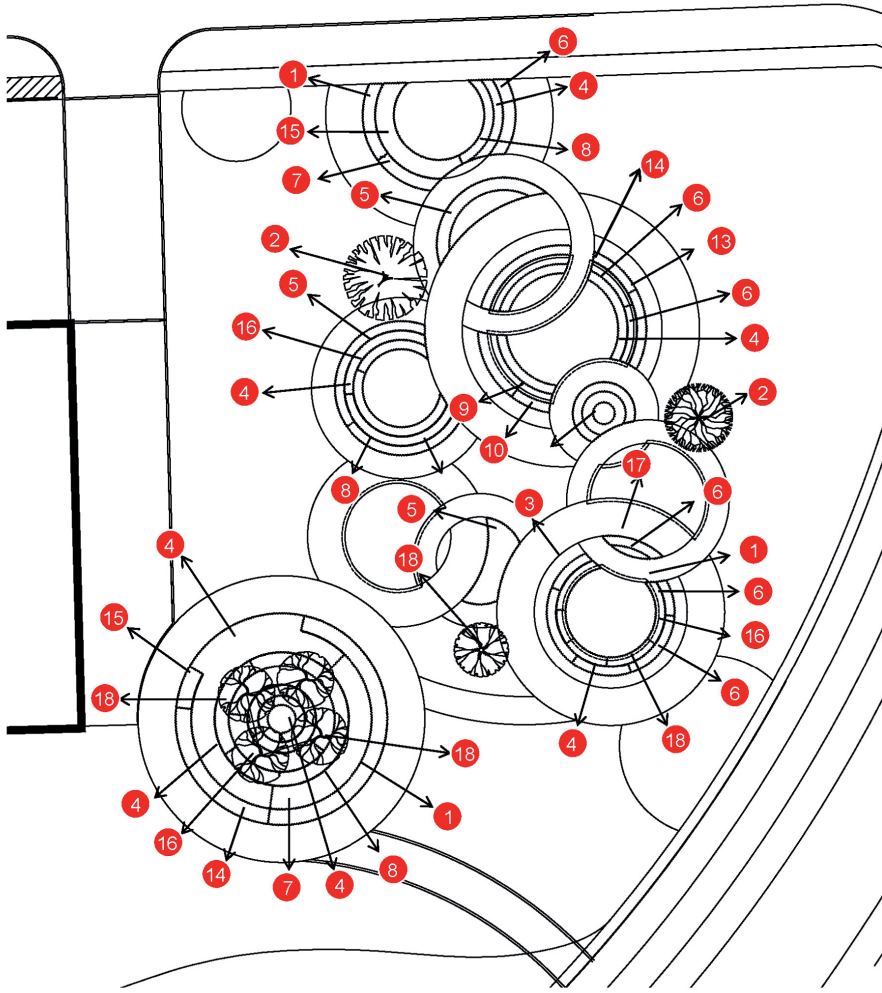
Qingdao is a coastal city and has a good climate for various plant species to grow. By incorporating a graphic index into the project, the garden creates a plant library for popular knowledge and science. Additionally, by incorporating the idea of a plant “fashion show”, a colorful “flower carpet” was created that reveals the charm of underutilized plants, but also gives flowers a leading role in connecting people with vegetation.



### Material and Application

The construction of the garden adopt low-carbon and environmental measures. In terms of material, the garden is built out of recycled steel and used rubble, and

8. 非可见光源的灯光设计在夜间园林中形成上下两层色彩和空间感受。
9. 矗立在花丛中的高椅
8. The use of hidden light sources creates two distinct layers, providing visitors a colorful visual experience, and a unique spatial perception.
9. High chairs standing in flowers

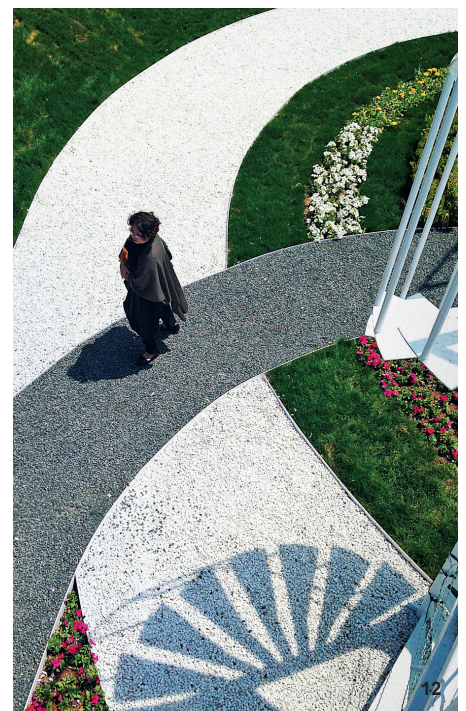




- |                                                                                       |                                                                                       |                                                                                     |                                                                                     |
|---------------------------------------------------------------------------------------|---------------------------------------------------------------------------------------|-------------------------------------------------------------------------------------|-------------------------------------------------------------------------------------|
|    |    |  |  |
| 1. 白晶菊<br><i>Chrysanthemum paludosum</i>                                              | 2. 白玉兰<br><i>Magnolia denudata</i>                                                    | 3. 佛甲草<br><i>Sedum lineare</i>                                                      | 4. 金叶女贞<br><i>Ligustrum x Vicaryi</i>                                               |
|    |    |  |  |
| 5. 异果菊<br><i>Dimorphotheca sinuata</i>                                                | 6. 孔雀草<br><i>Tagetes patula</i>                                                       | 7. 虞美人<br><i>Papaver rhoea L.</i>                                                   | 8. 红叶石楠<br><i>Photinia serrulata</i>                                                |
|    |    |  |  |
| 9. 花葱<br><i>Allium spp.</i>                                                           | 10. 羽扇豆<br><i>Lupinus polyphyllus</i>                                                 | 11. 鼠尾草<br><i>Salvia officinalis</i>                                                | 12. 五角枫<br><i>Acer mono Maxim</i>                                                   |
|    |    |  |  |
| 13. 矢车菊<br><i>Centaurea cyanus</i>                                                    | 14. 夏堇<br><i>Torenia fournieri</i>                                                    | 15. 马鞭草<br><i>Verbena spp.</i>                                                      | 16. 紫叶小檗<br><i>Berberis thunbergii cv. atropurpurea</i>                             |
|  |  |                                                                                     |                                                                                     |
| 17. 八宝景天<br><i>Hylotelephium erythrostictum</i>                                       | 18. 日本晚樱<br><i>Prunus lannesiana</i>                                                  |                                                                                     |                                                                                     |



11



12



13

garden furniture is built from used desk legs and chairs. Furthermore, the furniture is skillfully combined with the water supply and drain systems to develop an energy-saving irrigation and drain system. Native species make up a majority of the selected trees, which helps build up insect resistance and ensure easy maintenance.

### Conclusion

The Lun Dao Garden creates a close-range and multi-dimensional communication space for human-to-human and human-to-nature interaction. The garden is a dynamic space for new spatial and perceptual experiences, making the garden an iconic event landscape design. **LAF**



14

10. 花毯种植设计图
11. 地面花毯营造出的植物秀场。
12. 色彩、材料、光和影，以及人一同形成了禅意而有趣的空间氛围。
13. 夜间，长桌下的镜面玻璃反射的光投在地面上，映出粼粼波光；这里在日间也是乘凉荫蔽的好去处。
14. 长桌下的反射镜面记录着人与景观环境的交叠变化，吸引游客竞相留影。
10. Flower carpet planting design
11. The flower carpet — a plant "fashion show".
12. Colors, materials, lights, and shadows along with the human make an enjoyable place with Zen sense.
13. At night, the mirror underneath the table reflects and makes shimmering waves on the ground. The table also provides shade during daytime.
14. The mirror underneath the table shows overlapping and changing images of people and the landscape, which gets photographed by visitors a lot.