



收稿时间 / Received Date | 中图分类号 / TU982.3
2014-01-02 | 文献标识码 / B

林中澄明

——德国因戈尔施塔特冲积平原森林中的临时装置

Lichtung

— An Ephemeral Installation in the Floodplain Forest of Ingolstadt, Germany

OFICINAA设计事务所 / OFICINAA

翻译 / Translated by / 孙一鹤 Robin SUN
校对 / Proofread by / 田乐 Tina TIAN

摘要

“林中澄明”这一装置位于德国因戈尔施塔特市的冲积林地中，沿当地一条400m长的狭窄小径而布设。它旨在使多瑙河能被居民们触摸和感知。“Lichtung”一词在德语中意为“林间空地”——由“licht”（德语中意为“光”）演变而来——是指一种不加掩饰的、自我反思的空间。

关键词

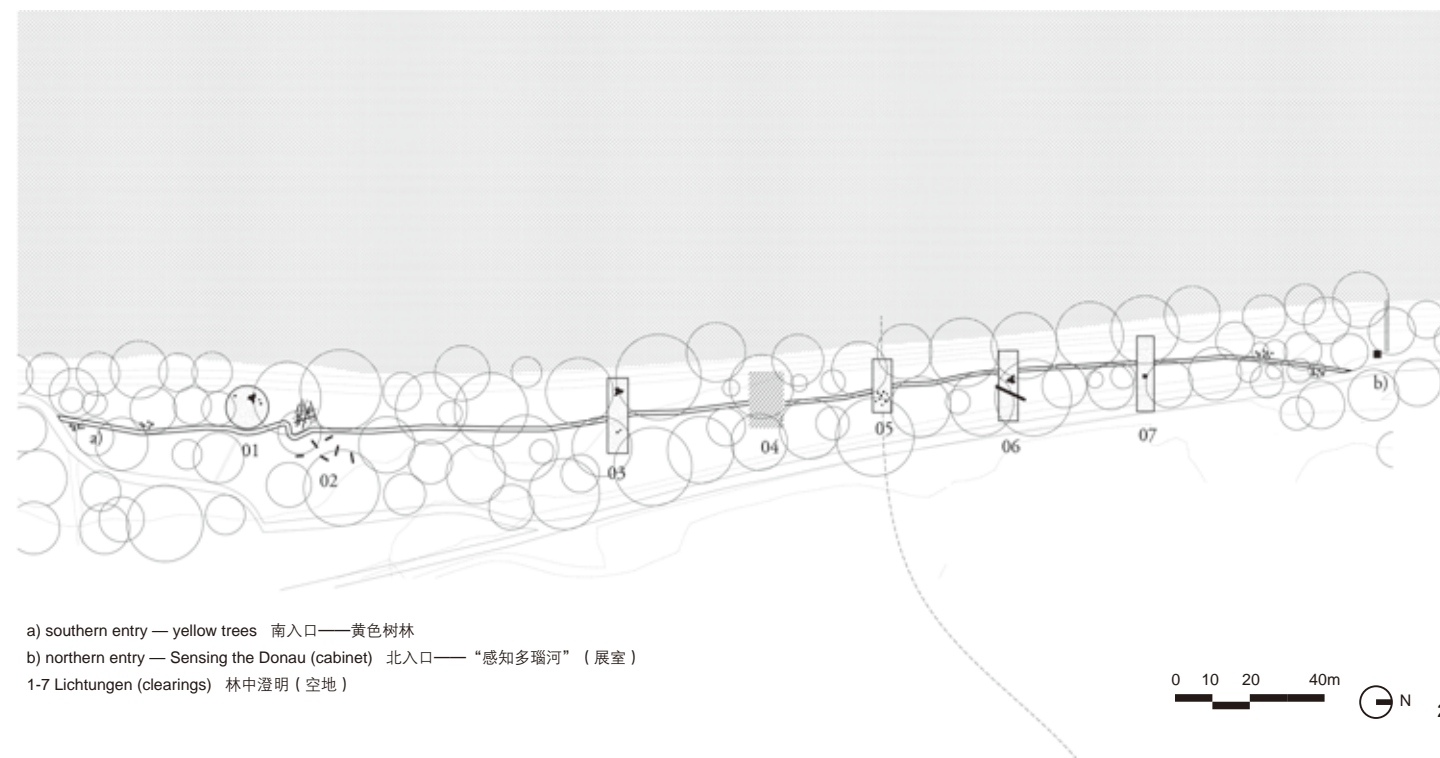
临时装置；氛围；冲积；林间空地；微气候

Abstract

Lichtung is an installation built along a narrow pathway of 400 m in the alluvial forest of Ingolstadt, Germany. It aims to immerse residents into the haptic qualities of the Danube River. Lichtung is the German word for “clearing”, and derives from light (licht); it is a space of disclosure, appearance, and reverberation.

Key words

Ephemeral Installation; Atmosphere; Alluvial; Clearing; Micro-climates



a) southern entry — yellow trees 南入口——黄色树林
b) northern entry — Sensing the Donau (cabinet) 北入口——“感知多瑙河”（展室）
1-7 Lichtungen (clearings) 林中澄明（空地）

项目地址：德国因戈尔施塔特市

项目长度：400m

项目委托：因戈尔施塔特市政府

景观设计：OFICINAA设计事务所

项目团队：Alexander Häusler、Silvia Benedito、Emily Schlickman、Marissa Angell、Dima Schledowitz、Marcus Eichermüller

安装时间：2013年7月

Location: Ingolstadt, Germany

Area (length): 400 m

Client: City of Ingolstadt

Landscape Architecture: OFICINAA

Project Team: Alexander Häusler, Silvia Benedito, Emily Schlickman, Marissa Angell, Dima Schledowitz, Marcus Eichermüller

Implemented Time: July, 2013



我们眼中的事物取决于我们对其的理解。
——休伯特·德雷福斯

“林中澄明”是位于德国因戈尔施塔特冲积平原森林中的一种临时装置。多瑙河的河源在此向东流淌，将这座中世纪的古城一分为二。尽管城市与河流相邻，但却因为受防洪基础设施、交通廊道和因植被蔓生影响活动等的阻碍，当地居民很少前往河岸。OFICINAA设计事务所为城市与河流的重新连接进行了一项更大尺度上的概念设计，而林中澄明正是其中的第一个项目。这个装置的命名受到马丁·海德格尔对这一措辞的使用的启发：“Lichtung”是指一种自我展示的空间，人们可以在其中展示存在于世的意义。

该装置安装于2013年7月，沿一条实

1. 营造的林间氛围。林间空地中的人工迷雾。© Jann Averwesser
2. 场地平面图。这条装置小径上布设了7处林间空地，为人们提供了自省空间。© OFICINAA
3. 网格概念。图中展示出了在原有洪泛平原森林中加上网格的叠加效果。© OFICINAA
1. Heightened atmosphere. Fabricated mist cloud in clearing. © Jann Averwesser
2. Site plan. Seven clearings intersect the installation pathway, offering space for reflection. © OFICINAA
3. Grid concept. It illustrates the superimposition of a rational grid onto the existing floodplain forest. © OFICINAA

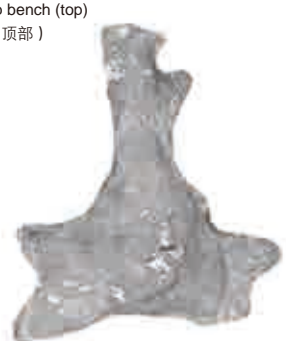


Tree-stump bench (base)
树桩座椅 (基底)



5-1

Tree-stump bench (top)
树桩座椅 (顶部)



5-2



5-2

际存在但却未经利用的冲积平原小径进行布设。这个项目的核心是一系列水平方向和垂直方向上的“林间空地”。一个个拥有直线边界的场地——由附在其上的网格所划定——从河堤一直延伸至水岸，形成了一块块裸露的地面；而这会改变一个人对场地的感知，令人能够察觉这片冲积平原森林氛围中的微小变化。光线、湿度、温度、气味，以及声音沿着这条河滨小径被放大。林中设有7处空地，其内一天之中的时间、遮荫强度、湿气程度和步行快慢等因素都会对瞬息万变的氛围造成影响。这些林间空地使得人们放慢脚步，沉浸在这片营造的冲积平原景致之中，在这里可以坐观河景，从而使人们回归河岸。

每处林间空地中都设有一个较大的座椅，人们可在此惬意地或坐或躺，同时感受这片冲积平原森林中的氛围变化。由手工雕塑模型精心制作而成的座椅仿佛一个个原始巴伐利亚森林中的树桩。受到自然形式的启发，这些座椅被刻意地从其周边环境突显出来，其体量夸张，并被漆以醒目的金色。最后，它们成为了一系列精致而神秘的、藏置在多瑙河洪泛平原自然景观中的工艺构件。

除了座椅和林间空地之外，这组装置包括一片树干被漆刷成黄色的林地，树干上被漆刷的高度代表着附近堤坝——为了保护因戈尔施塔特东部社区免受洪水侵袭——的高度。这片林地成为了人们进入该项目的南部通路。在河流小径的北端是一片同样带有“标记”意义的林地，其中设有一间建造在一个废弃的水文观测站中的气味展室。展室中摆放着10个芳香瓶和一些悬挂在天花板上的标本，吸引游人前来嗅闻洪泛平原中的各种短暂的气味。在这些展品当中，有一种气味——“多瑙河水”——来自于河水本身，它们被装在一个个小玻璃瓶中并分发给游客。除此之外，展室的墙面上还有一张场地的感知地图。这张地图依据湿度、气温、声音和风速等方面的数据而创建，将这座森林感知上的细微之处进行了可视化的“快照”，留给短暂驻足的过客去发现。LAF

Things show up in the light of our understanding of being.

— Hubert Dreyfus

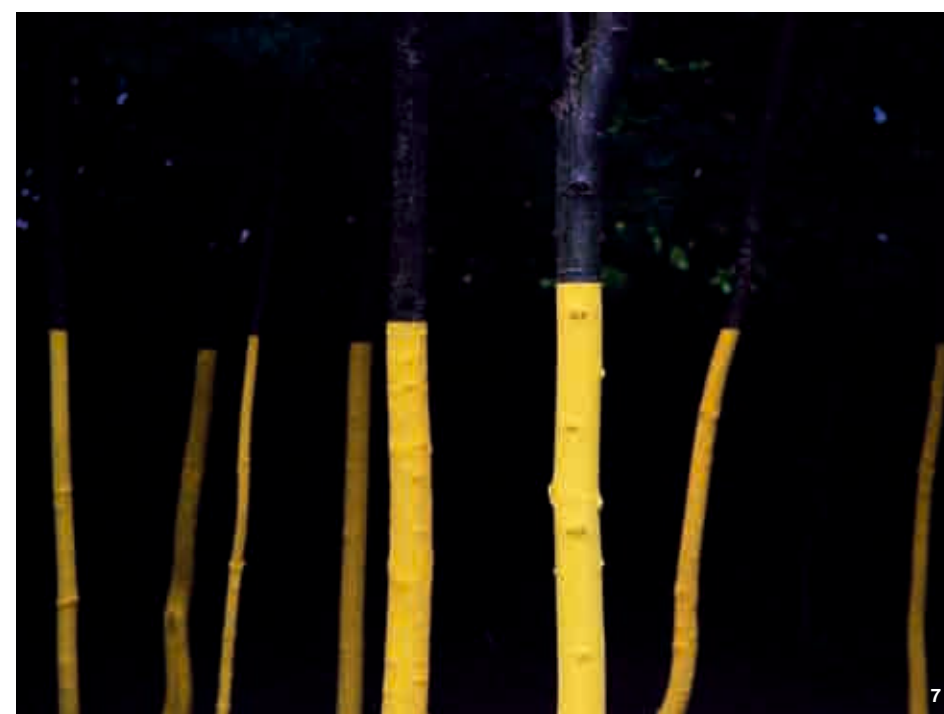
Lichtung is an ephemeral installation located in the floodplain forest of Ingolstadt, Germany. Here, the headwaters of the Danube River flow eastward, bisecting the medieval town into two. Despite this proximity, residents rarely access its banks as barriers in the form of flood-control infrastructure, transportation corridors and overgrown vegetation inhibit interaction. Lichtung serves as the first step in a larger design concept developed by OFICINAA to re-link the city with its river. The name of the installation was inspired by Martin Heidegger's use of the term: Lichtung describes the space in which something appears to oneself, while revealing something in oneself as of being-in-the-world.

The installation, implemented in July of 2013, sits along an existing but underused floodplain pathway. At the core of the project is a series of horizontal and vertical "clearings". Rectilinear plots, formed from a superimposed grid, stretch from the dike to the water's edge, creating surfaces to be scraped. The subsequent reveal of substrate alters one's perception of the site as subtle changes in atmospheric subjects of the alluvial forest — light, humidity, temperature, scent and sound — are amplified along the river pathway. Here there are 7 clearings, inside of which, the varying atmospheric elements are revealed according to a number of parameters including: time of the day, shade intensity, humidity gradients and walking pace. The clearings invite the subject to slow down and to contemplate the heightened sensory landscape of the floodplain while offering new views of the river, enticing the subject back to its banks.

Inside of each forest clearing lies a large-



6



7

scale bench, providing the subject with an opportunity to sit or lie-down comfortably while experiencing the changes of the alluvial forest atmosphere. Carefully crafted from hand-sculpted molds, the finished benches resemble tree stumps, alluding to the primordial Bavarian forest. While

- 林间空地测试。1m X 1m的测试地块被清理为裸露地面。© OFICINAA
- 林中澄明2号场地。金黄色的树桩从林间空地中突显出来。© OFICINAA
- 树干标记。被漆刷的树干标记着附近堤坝的高度。© OFICINAA
- Test clearing. One meter by one meter test plot for substrate reveal. © OFICINAA
6. Lichtung site 02. Golden stump emerges in the forest clearing. © OFICINAA
7. Tree markers. Painted tree trunks mark the height of the nearby dike. © OFICINAA

inspired by natural forms, the benches are intentionally distinguished from their surroundings through an exaggerated size and golden hue. In the end, they become a series of refined and uncanny artifacts nestled within the wild landscape of the Danubian floodplain.

Beyond the benches and clearings lies a field of yellow painted tree trunks, marking the height of a nearby dike — constructed to protect the eastern neighborhoods of Ingolstadt from seasonal flooding. This field of markers serves as the southern gateway of the project. At the northern end of the river pathway lies another field of markers as well as a curated scent cabinet contained within a decommissioned gauge station. Inside of the cabinet, ten perfume bottles and specimens hang from the ceiling, inviting visitors to smell the various ephemeral smells of the floodplain. Included in the collection is a perfume made from the river water itself, “L'eau de Donau”, packaged in individual glass vials for distribution amongst the visitors. Behind the essences,



a sensory map of the site lines the walls of the cabinet. This map, created with gathered data on humidity, temperature, sound and wind speed, visualizes a snapshot of the sensorial subtleties located in the forest to be discovered by transient users. **LAF**

- 8. 气味展室。悬挂于天花板上的芳香瓶垂吊在展室中。
© Jann Averwerser
- 9. 感知地图。场地中的湿度、气温、声音和风度等数据被记录在这张地图中（单位网格10m X 10m）。
© OFICINAA
- 8. Scent cabinet. Suspended from above, the essences float in the scent cabinet. © Jann Averwerser
- 9. Sensory map. Humidity, temperature, sound and wind speed data registered from the site (10 m X 10 m grid)
© OFICINAA

