

哈特福德市2014年首府城市公园总体规划 HARTFORD 2014 CAPITAL CITY PARKS MASTER PLAN

Sasaki设计事务所 / Sasaki Associates, Inc.



2

收稿时间 RECEIVED DATE: 2015-01-18
中图分类号 / TU986.2 文献标识码 / B

摘要

哈特福德市的公园系统拥有辉煌的公园设计历史，包括从袖珍的口袋公园到地区性景区的大批规模不等的城市公园。但是这种丰富度也为哈特福德带来了挑战。Sasaki设计事务所的“首府城市公园总体规划”旨在复兴公园系统的传统，为21世纪及更长远的未来创造在环境和财政上均可持续的公园系统。在解决关键的维护与安全问题的同时，该项目为增加收入，以及同学校、社区和企业进行战略性合作创造了机遇，旨在提升城市的自然资产的环境健康、改善城市居民的身心健康，提高整个公园系统的财政健康。

关键词

城市公园；总体规划；健康；可持续的公园系统；战略性合作

ABSTRACT

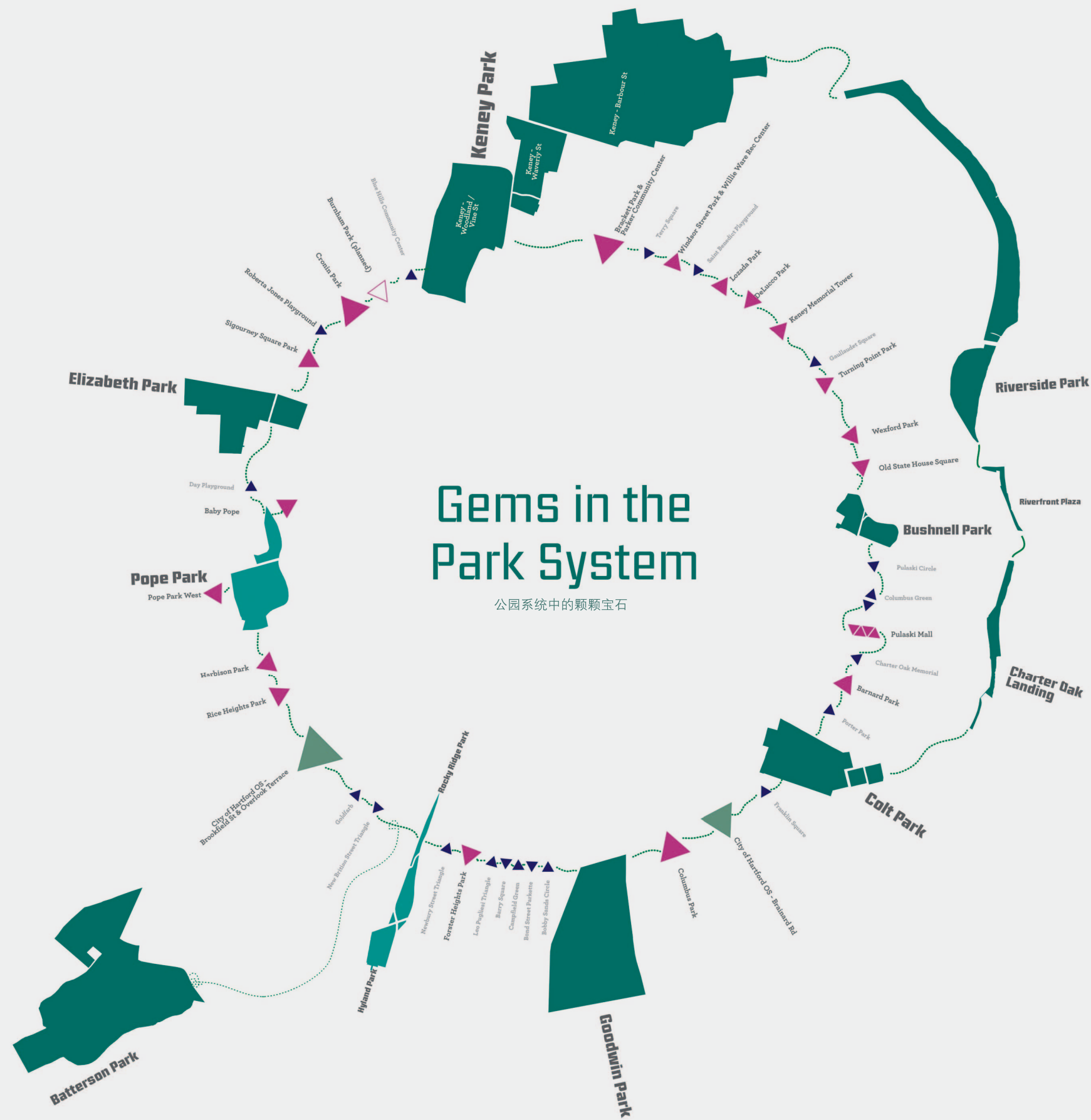
The City of Hartford's park system has a rich legacy of park design, and comprises abundant acreage of urban parks, ranging from small pocket parks to large parks that are a regional attraction. Yet this abundance is also a challenge. Sasaki's Capital City Parks Plan aims to renew the park system's legacy, creating a fiscally and environmentally sustainable park system for the 21st century and beyond. Addressing key issues of maintenance and safety, the project identifies opportunities for revenue generation and strategic partnerships with schools, neighborhoods, and businesses, to improve the environmental health of the city's natural assets, the physical and mental health of its residents, and the fiscal health of the park system as a whole.

KEY WORDS

City Park; Master Plan; Health; Sustainable Park System; Strategic Partnerships

译 陈立欣 田乐 郑燕霖

TRANSLATED BY Connie CHEN Tian TIAN Yenlin CHENG



Gems in the Park System

公园系统中的颗颗宝石

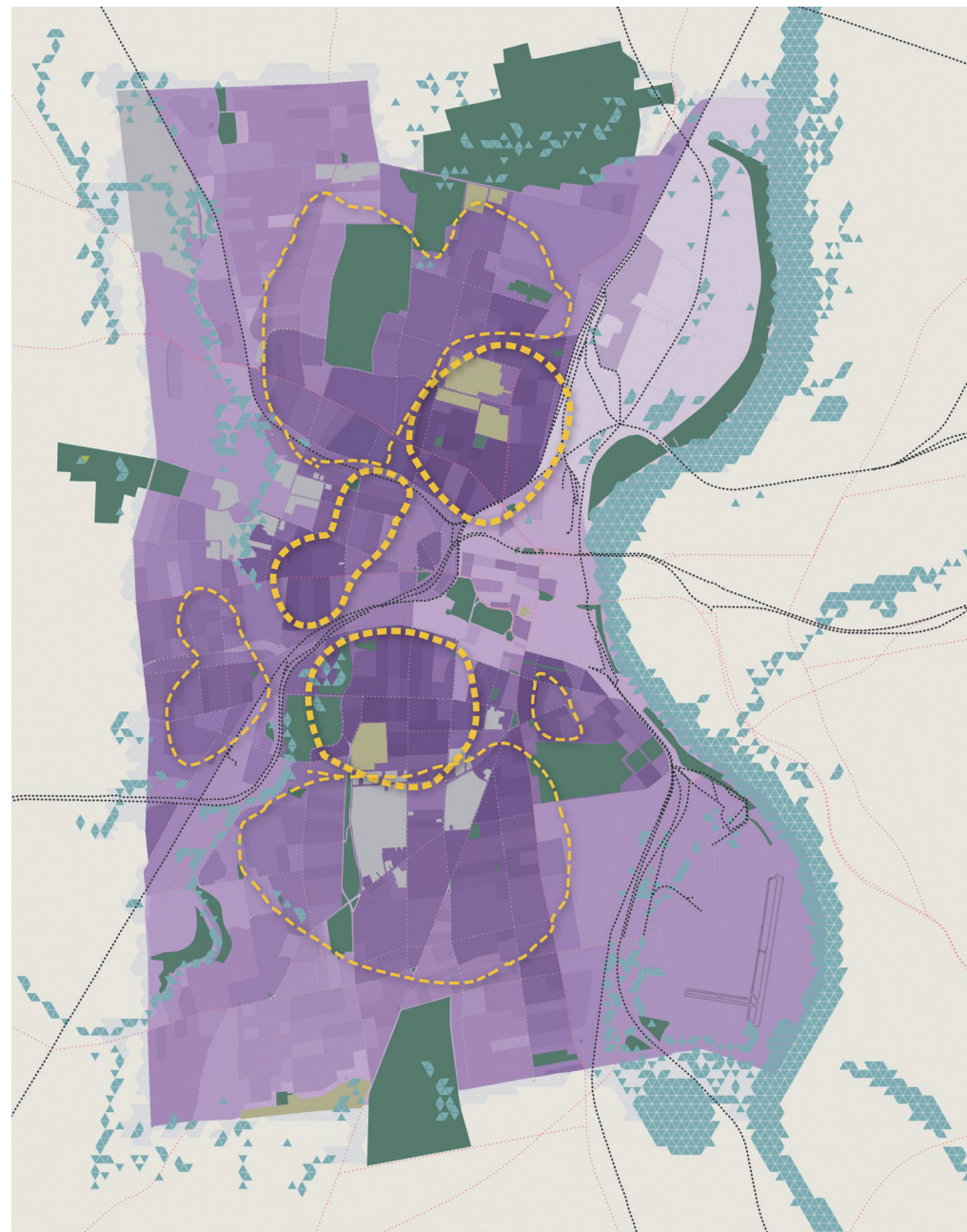
1. 哈特福德市“公园项链”规划策略
2. Planning strategies

拥有大面积城市公园及辉煌公园设计历史的哈特福德市从其丰富的城市公园系统传承中获益良多。该市公园系统由袖珍的口袋公园到地区性景区的规模不等的公园组成，可谓世界一流。但是这种丰富度也为哈特福德带来了挑战。

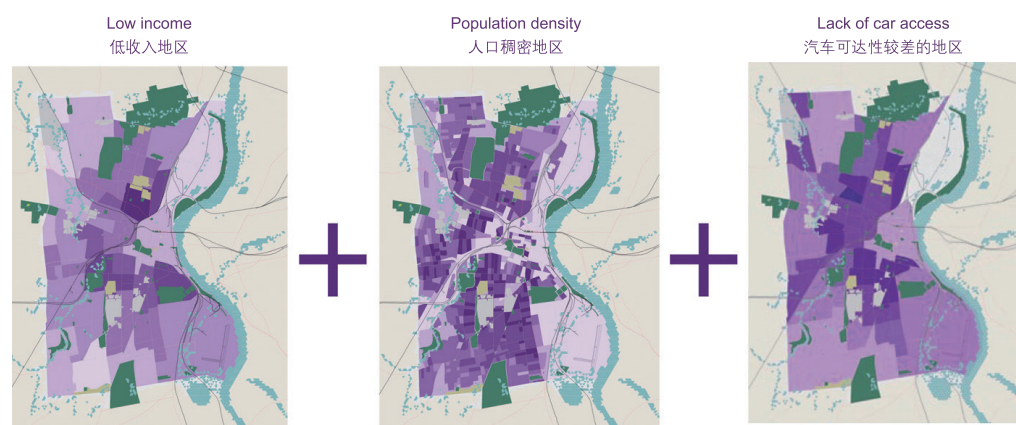
近来遭逢的经济窘境，导致城市难以维系面积庞大且被高度使用的公园系统，既无法给市民提供安全感，也很难保障为多元化的社区提供透明畅通的公园服务和活动。由Sasaki设计事务所提出的“2014年首府公园总体规划”力求将公园系统重新定位成优质多样的联通网络——而这正是该系统原初的愿景——并寻求连接公园与城市、优先投资

及减少维护成本的途径。

在未来的数十年中，此规划将有助于城市和社区形成其公园体系。与此同时，该方案提出了实体设计思想，这涉及到几个同等重要的方面：在城市公园系统中形成合作伙伴关系与管理制度；创造收入；管理并延续该规划与公园系统——所有这些都是以有限资源获得更大的成功为目标。各城市部门和社区共同对公园系统负有维护的责任。该规划中涉及了诸多方面，以期使首府城市公园系统能够突破其既定格局，使此公园系统中包含的所有元素都变得有意义，从而使公园系统在秉承其辉煌传统的同时，能够实现安全保障、得到精心维护、拥有更好的连



Area of high park need 高度需要公园的地区



性，以及全市范围内更畅通的可达性。

为了提高连通性，该规划提出了增强康涅狄格河和帕克河生态联系方案，并在全市范围内提倡改善市内及公园间步行和自行车骑行的驳接。通过这些策略，该规划方案力求提升城市自然资产的环境健康、改善城市居民的身心健康，并提高整个公园系统的财政健康。

该项目还发起了一项名为“我的哈特福德”的在线调查（由一系列问题和一张交互底图组成），邀请市民参与到规划过程之中。这将为新一代的开放空间和娱乐活动空间的设计提供参考，及并为哈特福德市连通性的改善提供依据。作为公共交流途径，“首府城市公园手册”中涵盖了10年行动计划、公园概念规划、合作伙伴关系基础、管理建议、连通体系图和分期战略、创收机遇、城市设置准则和流动性标准等多个方面。该手册的平面设计试图提升公园系统的可视性和社区关注度，进而帮助每一个人更好地理解他们可获得的资源。

Sasaki设计事务所的“首府城市公园总体规划”旨在复兴公园系统的传统，为21世纪及更久远的未来创造在环境和财政上均可持续的公园系统。在解决关键的维护与安全问题的同时，该项目为创收，以及同学校、社区和商业进行战略性合作方面创造了机遇。LAF

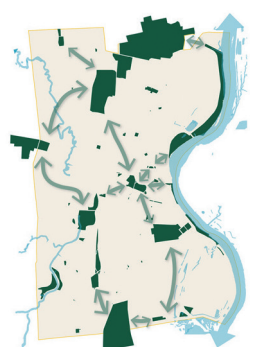
3. 公园需求分析
4. 提升连通性的步骤
5. 连通性地图



1 Connect along the rivers
增强河流上下游间的连通性



2 Connect parks with neighborhoods & one another
增强公园与邻里，以及公园之间的连通性



3 Improve connectivity within parks
增强公园内部的连通性

项目地址:
美国康涅狄格州哈特福德市

项目面积:
全市范围

项目委托:
哈特福德市

总体规划:
Sasaki设计事务所

责任总监:
Jason Hellendrung

项目管理:
Brie Hensold

设计团队:
Gina Ford, Eamonn Hutton, Jill Allen, Tera Hatfield

设计时间:
2013-2014年

LOCATION:
Hartford, Connecticut, USA

AREA (SIZE):
City-wide

CLIENT:
The City of Hartford

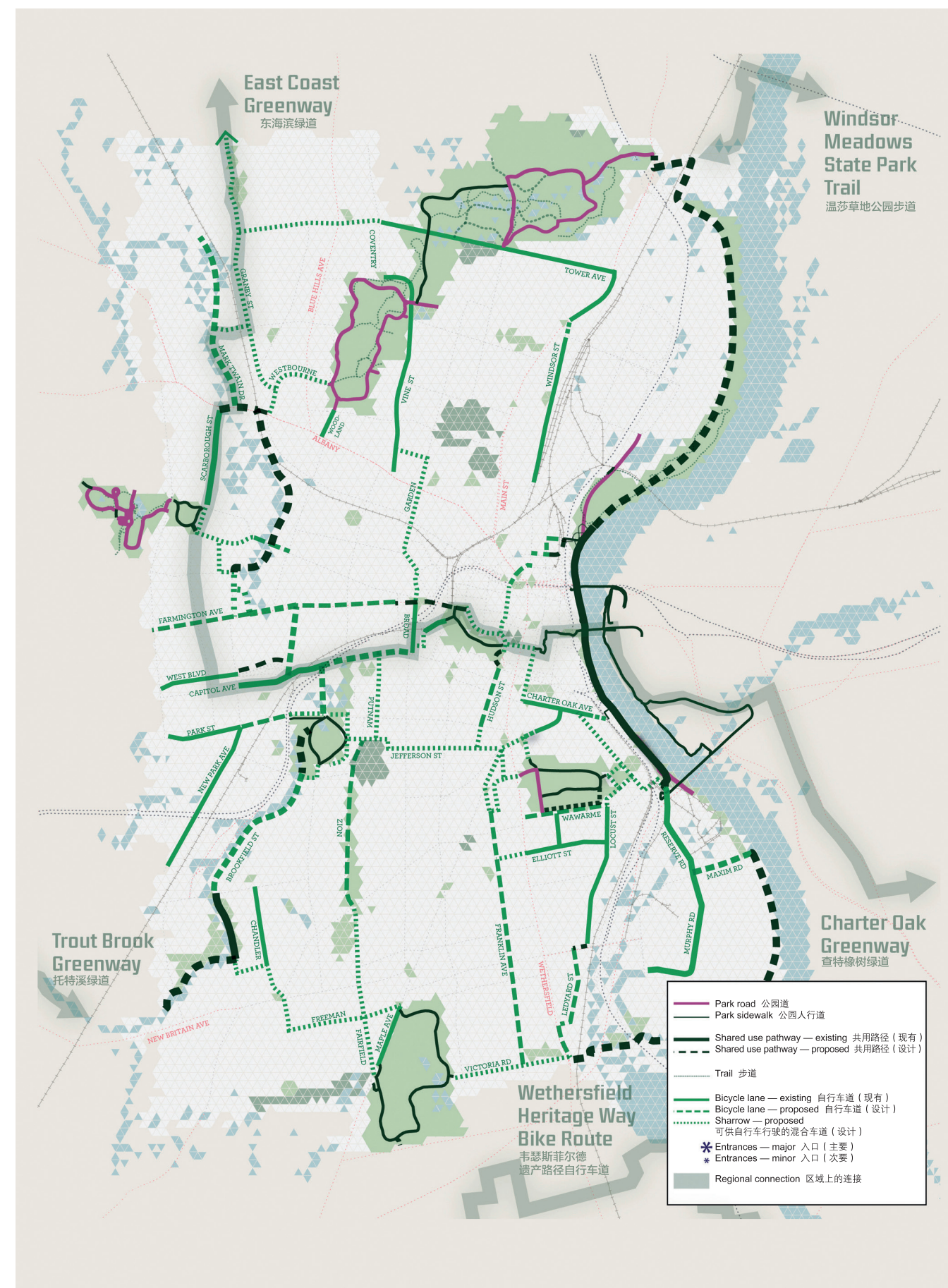
MASTER PLAN:
Sasaki Associates, Inc.

PROJECT DIRECTOR:
Jason Hellendrung

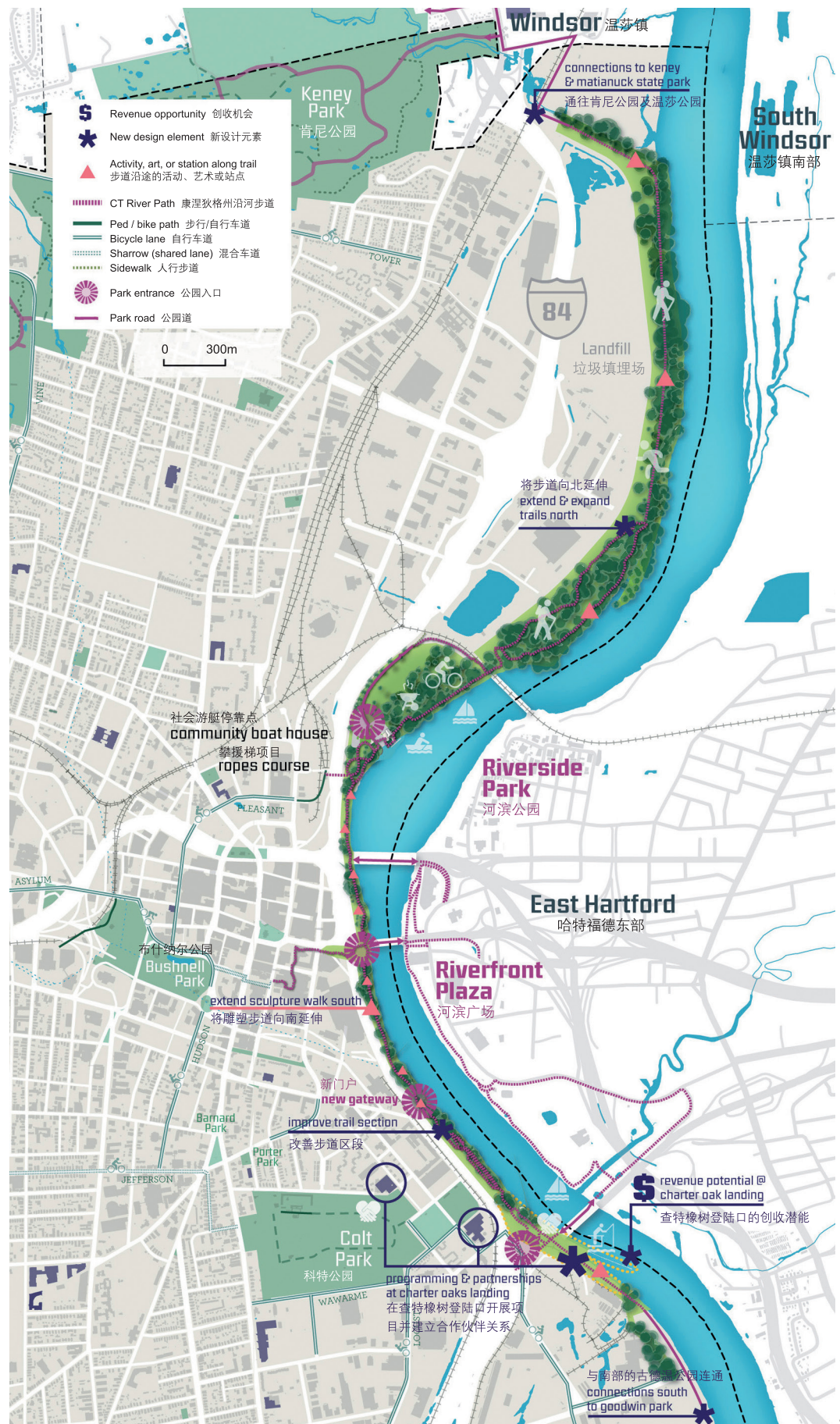
PROJECT LEADER:
Brie Hensold

PROJECT TEAM:
Gina Ford, Eamonn Hutton, Jill Allen, Tera Hatfield

DESIGN PERIOD:
2013 - 2014



- Park road 公园道
- Park sidewalk 公园人行道
- Shared use pathway — existing 共用路径 (现有)
- Shared use pathway — proposed 共用路径 (设计)
- Trail 步道
- Bicycle lane — existing 自行车道 (现有)
- Bicycle lane — proposed 自行车道 (设计)
- Sharrows — proposed 可供自行车行驶的混合车道 (设计)
- Entrances — major 入口 (主要)
- Entrances — minor 入口 (次要)
- Regional connection 区域上的连接



6. 为了提高连通性，该规划提出了增强康涅狄格河和帕克河的生态联系方案。
7. “我的哈特福德”在线调查中的公园感知评价地图。总体规划中会将这些评价纳入考量。
8. “我的哈特福德”在线调查中的连通性反馈意见。
6. To enhance connectivity, the plan provides for improved ecological connections along the Connecticut and Park Rivers.
7. Park perception heat map from MyHartford. The master plan accounts the comments into the consideration.
8. Connectivity feedback from MyHartford

The City of Hartford's park system has all the ingredients to become world class. The system has a rich legacy of park design, and comprises abundant acreage of urban parks, ranging from pocket parks to large parks that are regional attractions. Yet this abundance is also an obstacle.

Recent economic challenges have brought increasing difficulty for maintaining the system's vast acreage and highly utilized fields, for projecting a sense of safety to citizens, and for ensuring transparent communication of park offerings and events to the diverse community. The 2014 Capital

想了解肯尼地区更多的信息——作为市中心区的上班族，我都没听过这里。

Would love to know more about [Keney] - don't ever hear about it as a downtown employee

听说肯尼公园一向不太安全。

[Keney Park] has a reputation of being unsafe.

我个人是不会去科特公园的。尽管当地人对这个公园的评价不是很好，但我还是经常看到有一些来自附近城镇的年轻人去那里进行体育活动。

I personally do not visit [Colt] park. Locals do not speak highly to me about this park although I find a lot of young professionals from neighboring towns tend to use this space frequently to host athletic events.

科特公园的景色很好。我不确定是不是有很多人知道这个地方的活动场地。

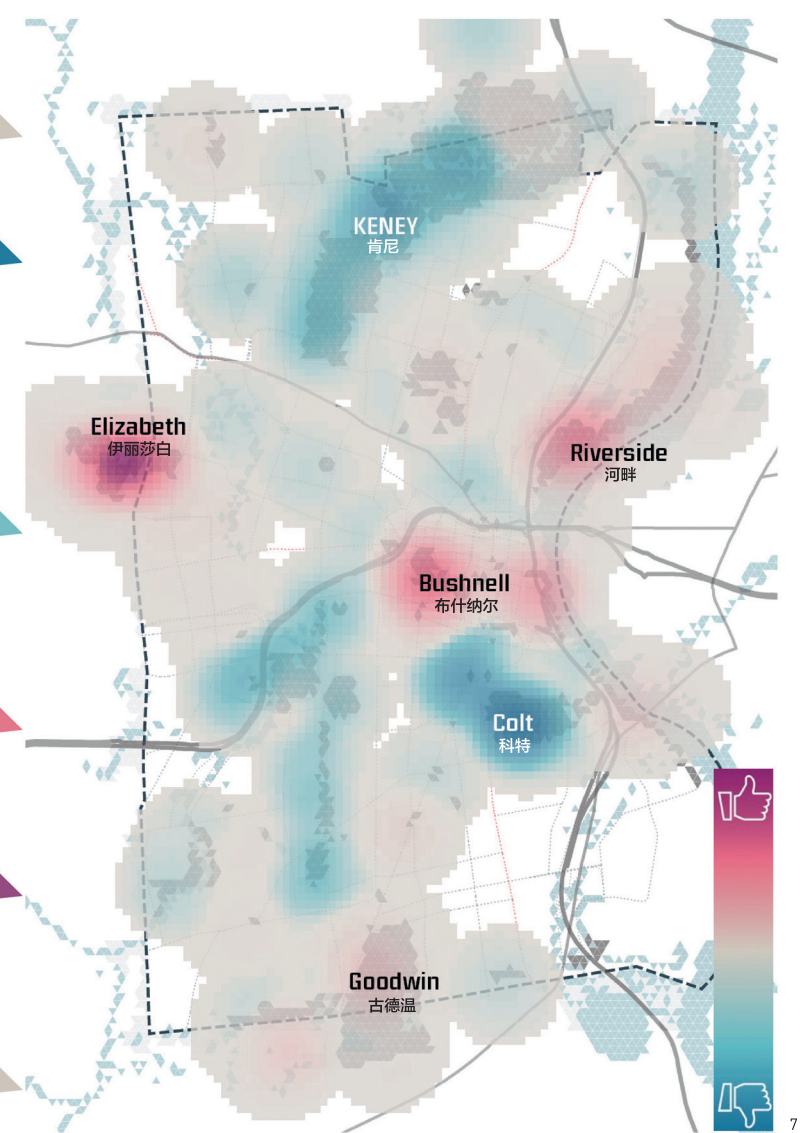
The views of Downtown from [Colt] park are great. I am not sure too many people know about all the playing fields here.

伊丽莎白公园很棒——主要是因为人们觉得它很棒。

Elizabeth is a great park. Mostly because people think it's a great park.

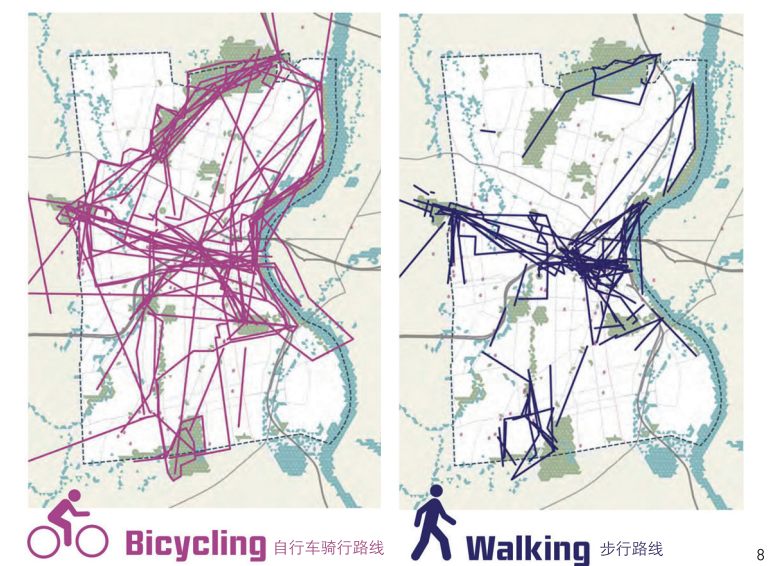
我喜欢布什纳尔公园，但那里需要更多的垃圾收集和清扫。扔个垃圾需要走上好远的路。

I love [Bushnell] park but we need more litter collection and clean up. It took way too long for the pond to get fixed.



City Parks Plan, proposed and developed by Sasaki, seeks to reposition the parks system as the connected network of high quality, diverse parks that was always envisioned, seeking ways to connect the parks and city, prioritize investments, and reduce maintenance burdens.

The plan provides tools to help the city and the community nurture their park system over the coming decades. While the plan recommends physical design ideas, it gives equal value to strategies to foster partnerships and stewards of the system, generate revenue, and govern and sustain the plan and parks system — all with the



goal of achieving more successes with constrained resources. The responsibility for taking care of the system belongs to both the city departments and the community. The plan integrates all roles, in hopes that the Capital City Parks System can change existing patterns so that all are meaningful participants in the creation of a park system that honors its legacy and is safe, well-maintained, better connected, and accessible to all.

To enhance connectivity, the plan provides for improved ecological connections along the Connecticut and Park Rivers, as well as a citywide initiative to improve walking and bicycling links around the city and between parks. Through these strategies, the plan seeks to improve the environmental health of the city's natural assets, the physical health of its residents, and the fiscal health of the park system as a whole.

MyHartford, an online survey that consists of a brief set of questions and an interactive map, invites citizens to participate



9-1

9. 市民们参与对总体规划及详细方案的评价过程。
9. Citizens participated in the evaluation process of the master and detailed plan.



10



9-2

in the planning process and informs the planners as they envision the next generation of open space, recreation, and connectivity improvements in Hartford. A Capital City parks manual includes a 10 year action-plan, park concept plans, partnership matrix, governance recommendations, connectivity system map and phasing strategy, revenue generation opportunities, and furnishing guidelines and mobility standards. The graphic design of the manual is intended to raise the visibility and community interest in

the parks system, helping everyone to better understand the resources available.

Sasaki's Capital City Parks Plan aims to renew the park system's legacy, creating a fiscally and environmentally sustainable park system for the 21st century and beyond. Addressing key issues of maintenance and safety, the project identifies opportunities for revenue generation and strategic partnerships with schools, neighborhoods, and businesses. **LAF**

- 10,11. 首府城市公园手册
- 10,11. Capital City parks manual



11