

## 雕刻荒野：

### 重绘美国西部公共土地上的景观线

## Inscribing Wilderness:

### Redrawing Lines of Landscape and Vision on Western Public Lands, USA

萨拉·雅各布斯

哈佛大学设计学院景观设计学硕士

Sara JACOBS

Master of Landscape Architecture, Harvard  
GSD

翻译 Translated by / 蔡金栋 Jindong CAI  
校对 Proofread by / 田乐 Tina TIAN

摘要 ……

重叠的边界和模糊的管辖权限塑造了美国西部的景观。“雕刻荒野”项目提议扩建亚利桑那国家观景游径，其原有的直线几何形式定义了这片土地的边界，但物理意义与法律意义上的空间并非总是一致的，造就了其层叠的历史。通过将“荒野”视为各种边界相互重叠和渗透的空间，本方案试图重新校准呈现在地图之上的区域控制线，以及通过景观维护形成的景观线之间的关系。这条跨州界、跨部门的游径将创造一片自治区域，从而重新划分通过地图和规划手段所形成的空间，将原本被忽视并被定义为“荒野”的区域带进人们的视线，思考、评估和预测对这一区域进行保护管理的可能性。

关键词 ……

荒野；公共土地；地图绘制；亚利桑那国家观景游径

Abstract ...

Overlapping boundaries and ambiguous jurisdictions have shaped the landscapes of the western United States. Inscribing Wilderness proposes expanding the Arizona National Scenic Trail, the rectilinear geometries that have defined the borders of these landscapes create layered histories where physical and juridical space does not always match. Understanding that wilderness is a construction where boundaries are plural and porous, the proposal recalibrates lines of control, as displayed on maps, and lines on the ground, the result of landscape maintenance. The trans-state, trans-agency trail would create an autonomous territory, thus redrawing space through map and plan, where the irony of wilderness is exposed to confront visions, value, and expectations of conservation.

Key words ...

Wilderness; Public Lands; Mapping; Arizona National Scenic Trail



“在荒野的概念里并无自然二字，它完完全全是文化的产物，是文化重视的对象，是在人们极力否定其历史中产生的。事实上，荒野是由文化创造的，最明显的证据是荒野诞生并发展的那段历史已被彻底抹去。”<sup>[1]</sup>

1. 当步道穿越焚烧区时，荒野和可供租赁土地之间的视野将发生变化。时间会随着新的植物品种占领这块地区而被记录下来。

1. Views between wilderness and leasable land shift as the trail passes through the burned areas. Time is registered as new plant species colonize the area.

美国西部是一片遍布冲突的历史且疆域重叠的土地，受无数政府机构和私人利益方控制，面积达2.63亿公顷。这片景观被奉为神圣庄严的土地，荒凉而贫瘠，可以被征服并加以利用。这片区域的行政边界由政治力量决定，并具有笛卡尔式的几何特点，用线条在地图“空间中平等地分配权力”，却置地理形态和生态布局于不顾。<sup>[2]</sup>

亚利桑那国家观景游径是美国国家步行与徒步游径体系的一部分。雕刻荒野项

目旨在对这条游径进行扩展，以主动的视角来探索荒野在景观层面的保护策略。这样一条跨州界、跨部门的游径穿越了公共土地的不同管辖区域，对它进行管理，实际需要将游径作为自治的部门，从而形成了区域领土的新版图。利用原先已经存在的阿巴拉契亚游径、大地艺术运动的作品和景观摄影，该项目建议实施大陆尺度的保护措施，通过地图和规划重新界定公共土地，并在景观的地表上留下新的痕迹。景观维护实践显现在这片土地上，而游径

的设计将聚焦于这些实践，并通过强化现有的政治线条或绘制新的线条，融入并跨越现有的界线，以扩展荒野的视野。其边缘并不是尽端；物理空间与地图界线之间的互动将开辟出新的空间让人对将荒野的置之不问视为一种保护，以及将保护区等同于荒野之地的观点进行反思。

从亚利桑那州北部到犹他州南部的干预区域，有着美国最集中的保护区，同时也是当前这个国家城镇化发展最快的地区。该项目的重点是大峡谷北侧与89号高速公路之间100km长的横切带。关于这片土地的最佳利用方式，存在着各种各样的争议，从国家景区内的煤矿及铀矿开采，到被公共土地环绕的私人领地。该游径虽然被生硬地隔断，却超越了地图上的界线且仍然能够适应当地的生态、生产及消费状况。因此，该项目的早期工作在于重新绘制现有的联邦土地利用图，使之基于土地利用许可而非部门组织。

自2000年成立国家景观保护体系以来，共计885处场地、面积达1 092万公顷的公共土地被留作永久的保护区和国家遗产。<sup>[3]</sup>除此之外，美国林务局和土地管理局正在不断增加用作荒野的土地——也被称为是“土壤及生活在其中的生命不受人类干扰的”地方。<sup>[3]</sup>本项目不认为荒野存在于人类之外，而将荒野视为一种不必要的区别，认为荒野与人类之间是共生的关系。

直线几何的数学勘测法经常应用于被视为乡村、荒野和未开发的土地上。这种测量体系至今仍是公共土地产权分割的指导原则，它造成了土地层叠的历史，而基

2. 采矿、原始土地利用和资源蕴藏的故事和历史，经常被排除在我们如何看待无人居住土地的讨论之外。相反，这些景观被还原为荒野，没有人为干预的存在。上方的图片是由约翰·卫斯理·鲍威尔绘制的地图，西部流域被公共土地测量体系划分为几何图形，凸显了应用严格的界限划分地形导致的矛盾。
2. Narratives and histories of extraction, native uses, and resource potential are often left out of discourses surrounding how we view uninhabited land. Instead these landscapes are reduced to a composed view of wilderness as a place void of human intervention. The top image is the John Wesley Powell's map of western watersheds overlaid with geometries from the Public Land Survey System, highlighting the contradictions of applying rigid boundaries to diverse topographies.



于几何学的划分和细分方法本意是为了公平，这种方式却发现了本不为人所知的景观，并将人类的影响刻在其中。在形态各异的地表上利用直线对土地所有权进行分割，其结果是各种诉求、目的、使用者及根深蒂固的价值观错综地交织在一起。联邦土地上出现农业、采矿业、畜牧业等支离破碎的利用形式，加快了水土的流失。在这种背景下，争议的焦点由原先的“应该保护什么”转移到“受保护的地区应如何发挥多重用途”。今天，具有文化价值的景区经常同时拥有采矿历史、原始土地利用模式和资源蕴藏。在如何看待无人居住的土地的问题上，这种观点经常被忽视，而将荒野看作是远离人类干预的地方。

现有的许多土地和政策划定区域，如国家纪念区、自然生态保护区、国有林区，以及土地管理局管辖下可以租赁的土地，虽然有着不同的名称，但其功能与工作重点不仅重叠而且相似。与其保留这些名称，不如在新地图上根据受保护地、可租赁地、文化景观和景区等类别重新进行分区，而不是根据其管理部门进行划分。

这种分区方法将产生更多的多用途景观，其中的保护理念期望在同一片土地上融合荒野和矿区两种用地类型。其结果是，地图和规划被呈现在实际地面上，荒野不但是一片被设计过的空间，而且也是挑战未来生态保护和管理视野的平台。例如，观景游径建设、计划性的焚烧和放牧等传统的做法将会以新的方式继续得到运用，以保证游径不仅在地图上留下线条，同时也将被雕刻在景观地貌之上。作为一种保护区域的荒野、作为一种活跃过程的保护，当这两种看似矛盾的概念从视觉上被组合到一起的时候，人们对于景观价值的看法也开始发生变化。新的管理与维护边界将得到应用，却看不见产权的界线。

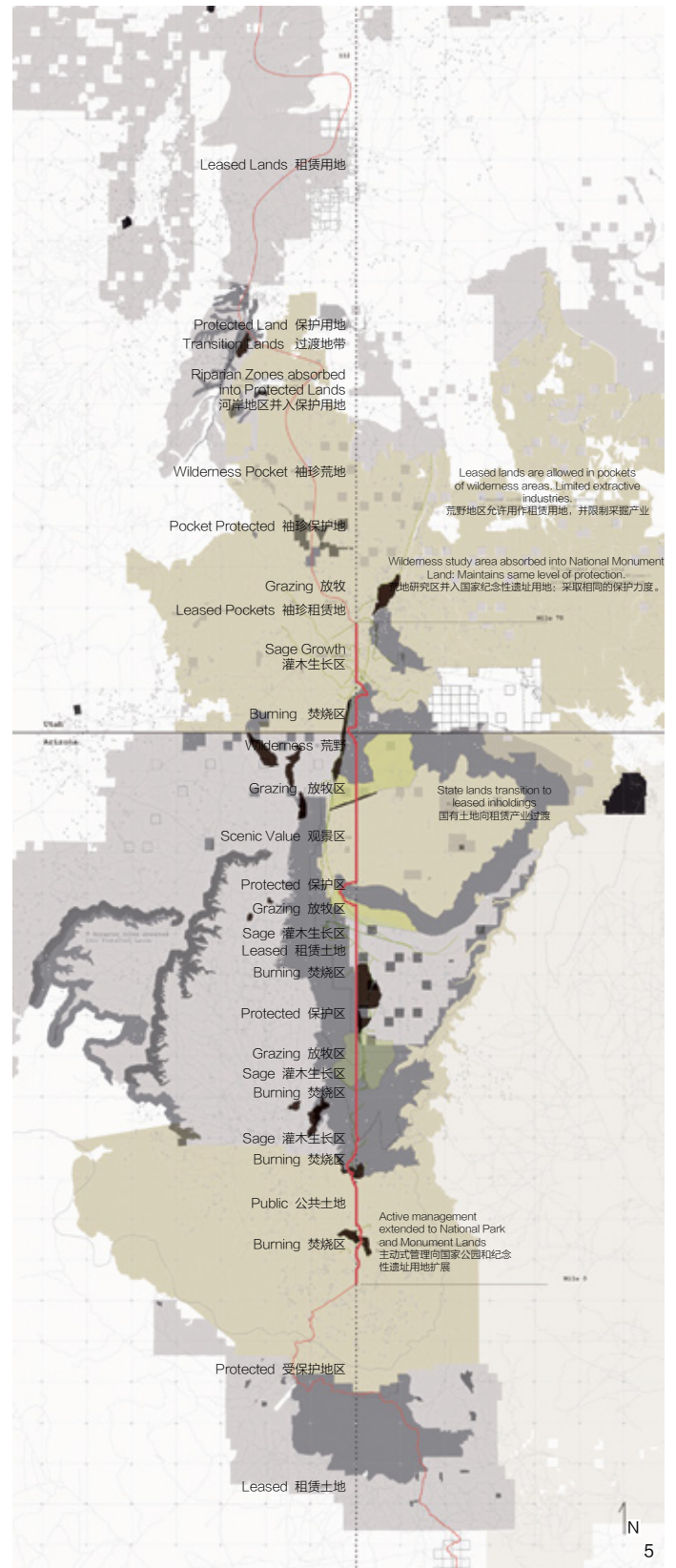
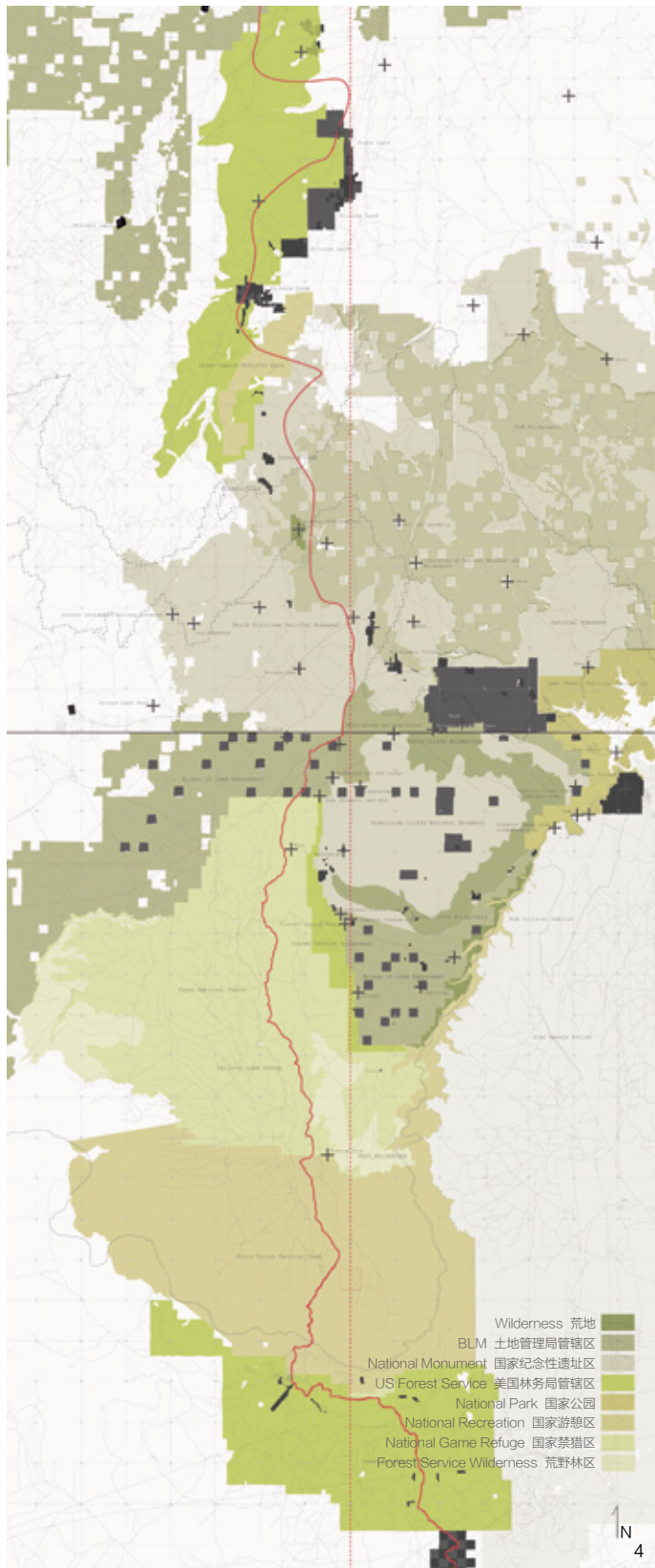
游径的位置将被重新确定，使之沿着西经112°方向，即亚利桑那州公共土地测量的起点延伸，并且仅在出现极端地形变化时才会偏离。通过改变其位置，可以强化其几何形状产权分割的历史，同时使景观作为基准，其他进程可以沿着相同方向进行或横穿而过。游径的建设将根据当地特点而变化，有的时候会强调空间控制，而在难以接近的地方则可能减少到仅剩脚

印。传统皇家园林曾被当作是炫耀和产权控制的工具，类似地，游径的轴向线性性质将描绘出荒野的讽刺意味，而游径的建设显露了维护的规模，并使荒野成为一片设计过的空间。

重叠的界线和模糊不清的管辖权限造就了美国西部的景观，而对土地保护和矿产开采双重任务的要求，则将美国的自然刻画为蔚为壮观的荒野和可以征服的疆域。通过维护来对土地进行物理标识，并非只意味着将我们对荒野的理解凝炼为一张简单的快照，而应扩大对荒野的展示，并将人类和非人类的管理体系纳入其中。该项目拒绝通过公共土地测量体系使用标准的欧几里得几何学对场址内的边缘或交叉点进行界定，而是将荒野视为多重和渗透的建设与边界，重绘并规划荒野的范围、土地的占用以及公共土地上的保护区。雕刻荒野方案探索了其代表性类型学景观策略，并将景观设计与经常只被地理学家、区域规划师和生态学家讨论的话题放在一起。其结果是对政治进行直观的解读，而荒野的讽刺意义将挑战保护区在规划、价值及预期方面的安排设定。LAF

1. Black Mesa Coal Mine  
Kenyatta, Arizona  
黑山煤矿  
亚利桑那州肯雅塔
2. 1 mile × 1 mile land parcel  
Southern Utah  
1.6km × 1.6km地块  
犹他州南部
3. Irrigated Crop Circle  
Farmington, New Mexico  
灌溉的麦田圈  
新墨西哥州法明顿
4. Rodon Crater  
Painted Desert, Arizona  
洛顿火山口  
亚利桑那州佩恩蒂德沙漠
5. Mexican Hat Uranium Tailings  
Mexican Hat, Utah  
墨西哥帽铀尾矿  
犹他州墨西哥帽
6. Sedan Crater  
Area 10, Nevada Test Site,  
Nevada  
色当火山口  
内华达州内华达试验场10区
7. Central Arizona Project  
Throughout Arizona  
亚利桑那中心工程  
覆盖亚利桑那州
8. Glen Canyon Dam  
Page, Arizona  
格伦峡谷大坝  
亚利桑那州佩吉
9. Hoover Dam  
Clark County, NY  
胡佛大坝  
纽约州克拉克县
10. Spiral Jetty  
Great Salt Lake, Utah  
螺旋防波堤  
犹他州大盐湖
11. Double Negative  
Overton, Nevada  
“双重否定”大地艺术  
内华达州奥弗顿





3. 美国西部增长速度最快的城市区域覆盖了联邦政府指定的荒野地区。
4. 现有的公共土地司法管辖区、边界和重叠部分沿100km长的步道分布，位于大峡谷的北缘和89号公路——一条位于犹他州边界北侧的、重要的呈东西走向的州际公路——之间。

5. 最新提出的游径被重新定位，沿西经112°线分布，仅在遇到极端的地形变化时才会偏离。
3. The fastest growing urban areas in the western United States overlaid with federally designated wilderness areas.
4. Existing public land jurisdictions, boundaries, and

- overlaps along a 100-kilometer trail section between the north rim of the Grand Canyon and Highway 89, the major east-west interstate, just north of the Utah border.
5. The newly proposed trail is repositioned to run along the 112°W latitude, only deviating from this path when it encounters extreme topographic changes.



6



7



“There is nothing natural about the concept of wilderness. It is entirely a creation of the culture that holds it dear, a product of the very history it seeks to deny. Indeed, one of the most striking proofs of the cultural invention of wilderness is its thorough going erasure of the history from which it sprang.”<sup>[1]</sup>

6. 目前的土地用途（左）被政策所划分，而非用途特性或生物物理特性。这些土地的名称以用途或生态特点被重新定义（右），而非依据管理机构。
7. 新的地图由保护的、可租赁的、文化的或优美的景观组成，而非机构所组织。这使景观的用途更加多样化，并能够将荒野和采矿的理念整合到同一个空间。
8. 位于图中路基处的高属灌木植物，成为对人类活动具有视觉提示作用的荒野景观。
6. Current land uses (left) are divided by policy rather than use or biophysical characteristics. These land designations are redefined (right) terms of use and ecology, rather than governing agency.
7. Instead of organized by agency, the new map is organized as protected, leasable, and cultural or scenic landscapes. This allows for more multiple use landscapes to emerge and integrating ideas of wilderness and extraction into the same spaces.
8. The view of sagebrush in the figure of a roadbed becomes an expanded view of wilderness that includes a visual reminder of human activity.

The western United States, as 650 million acres, is a landscape of conflicted histories and overlapping territories, a myriad of federal agencies and private interests control the land revered as sacred and sublime, wild and barren, conquerable and exploitable. The administrative boundaries of these lands have been drawn by politics and Cartesian geometry, distributing cartographic lines of “power equally across space” without regard to physical or ecological geographies.<sup>[2]</sup>

Inscribing Wilderness proposes the expansion of the Arizona National Scenic Trail, part of a national system of walking and hiking trails, to explore landscape-scale conservation strategies that build toward a projective vision of wilderness. The management of a trans-state, trans-agency trail across multiple jurisdictions of public lands positions the trail as an autonomous agency, thus creating a new pattern of territory. Drawing on precedents such as the Appalachian Trail, the Land Art Movement, and landscape photography, the project proposes continental scales of conservation

that would redraw public lands through map and plan, creating new inscriptions to mark the surface of the landscape. Focusing on landscape maintenance practices that emboss the land, the trail design would expand views of wilderness by either reinforcing political lines or drawing new lines that blur and cross over existing boundaries. The edge is not an end; the interaction of physical spaces with cartographic lines will create new sites to rethink conservation as a type of wilderness and vice versa.

The region of intervention, from northern Arizona to southern Utah, contains the largest concentration of protected lands in the US, and is currently the most rapidly urbanizing part of the country. The project focuses on a 100-kilometer transect between the north rim of the Grand Canyon and Highway 89. This stretch of land is littered with controversy over its best use, from coal and uranium mining claims in national monuments, to private land holdings enclosed by public lands. The falsely isolated nature of the trail fits into regional ecological, production, and





consumption patterns that operate across and despite lines on maps. Therefore, one of the first steps of the project redraws the existing federal land use map to be based on allowance rather than organized by agency.

Since the founding of the National Landscape Conservation System in 2000, 885 sites covering 27 million acres of public lands have been set-aside as areas of permanent conservation and national heritage.<sup>[3]</sup> Additionally, the Forest Service and Bureau of Land Management (BLM) are currently in the process of increasing the number of lands designated as wilderness, or places “where the earth and its community of life are untrammelled by man”.<sup>[3]</sup> Rather than accepting the divergent notion that wilderness exists outside of humans, this proposal attempts to reconcile wilderness as an unnecessary distinction and its relationship with humans as symbiotic.

The mathematical survey of rectilinear geometries was most often applied to lands considered rural, wild, or undeveloped. Still

the guiding principle of property division on public lands, the PLSS creates a condition of layered histories where the intended objectivity of dividing and subdividing based on geometries reveals unknown landscapes but also creates a reflection of human influences. The rectilinear division of property across topographically diverse surfaces has resulted in a complexity of claims, purposes, users, and embedded values. Fractured land uses on federal lands, such as agriculture, mining, and livestock grazing have accelerated patterns of soil loss and erosion. In this context, debate has shifted from what should be protected, to how protected lands should function under a multiple-use mission. Land that is today culturally valued for scenic qualities is often layered with histories of extraction, native uses, and resource potential. These types of narratives are often absent from discourses surrounding how we view uninhabited land, and instead our experience is reduced to a composed view of wilderness as a place removed from human intervention.

Many of the existing land and policy designations, such as National Monuments, Wilderness Areas, National Forests, and leasable BLM land, have separate title designations but similar, albeit overlapping, missions and agendas. Rather than keeping these title designations, the new map would be rezoned in terms of protected, leasable, and cultural or scenic landscapes, rather than being organized by agency. This method allows for more multiple-use landscapes to emerge and works toward an idea of conservation that is based on integrating ideas of wilderness and extraction into the same spaces. The result translates maps and plans into the physical ground, while wilderness is exposed as a designed space and a platform to confront future visions of conservation and management. For example, traditional management practices of trail construction, prescribed burning, and grazing will be used in ways that create visual readings of the trail that inscribe lines not just on paper maps but onto the landscape. The shift in perception



9

of the value of landscape begins with the visual composition of seemingly opposite ideas of wilderness as preserved place and conservation as an active process. Shown without property lines, new boundaries of management and maintenance could be applied.

The trail will be repositioned to run along the 112°W latitude, the starting point for the public land survey in Arizona,

and only deviates from this path when it encounters extreme topographic changes. This repositioning reinforces the history of geometric property divisions, while inscribing the landscape as datum for other processes to occur along and across it. The construction of the trail will wax and wane in accessibility, from moments that emphasize control, to places of less accessibility where the trail becomes just a footprint. In the sense that classic royal gardens have been used as a tool of display and control over property, the axial linearity of the trail draws out the irony of wilderness, the trail construction exposes the scale of maintenance and defines wilderness as a designed space.

Overlapping boundaries and ambiguous jurisdictions have shaped the landscapes of the western United States. The mission of simultaneous preservation and extraction mirrors a narrative of American nature as both sublime wilderness and conquerable frontier. Rather than distilling our understanding of wilderness to a single snapshot, the physical marking of land through maintenance should reflect an expanded representation of wilderness to include human and non-human systems of management. Rejecting normative Euclidian geometry to delineate the margins or intersections of site through

the PLSS, the project redraws and envisions new territories of wilderness, occupation, and conservation through the notion that wilderness is a construction and boundaries are both plural and porous. Exploring representation and typological landscape strategies, inscribing Wilderness positions the discipline of landscape architecture adjacent to topics usually reserved for geographers, regional planners, and ecologists. Lines on paper become lines on the ground. The result is a visual interpretation of politics where the irony of wilderness is exposed to confront the arrangement of vision, value, and expectations of conservation. **LAF**

REFERENCES

- [1] Cronon, W. (1996). The Trouble with Wilderness, or getting back to the wrong nature. In W. Cronon (Ed.). *Uncommon Ground: Rethinking the Human Place in Nature* (pp. 69-90, 81). New York: W. W. Norton & Company.
- [2] Cosgrove, D. (2008). *Geography and Vision* (p.95). New York: Palgrave MacMillan.
- [3] Bureau of Land Management. (2011). Retrieved from <http://www.blm.gov>.

9. 放牧区是具有强烈历史氛围的公共用地，与步道的剖面相平行。
10. 沿89号公路的入口。将管理策略植入如何感知、读取景观的视觉策略，以及美国荒野的人类和非人类系统的区分管理中。
9. Sheep grazing, which has a strong historic presence public land, runs parallel to sections of the trail.
10. The trailhead along Highway 89. Embedding management strategies into the visual arrangement of how landscape is read, perceived, and divided tests the extents of human and nonhuman systems of management in American wilderness.



10