



澳大利亚博士山花园多功能区 BOX HILL GARDENS MULTI PURPOSE AREA, AUSTRALIA

澳派景观设计工作室 / ASPECT Studios

博士山花园是一个历史悠久的公园，它坐落于博士山地区正在快速变化的都市中心地带，距离墨尔本市14km。该地区2011年总体规划提议在原有功能的基础之上增加新的休闲元素，并恢复现有公园空间的活力。这一规划旨在应对城市密度的增加和公园使用人群的增长，并容纳一些能够体现博士山地区当代文化融合的新型休闲活动。

澳派景观设计工作室和NMBW建筑设计事务所受白马市政委员会委托，在这个历史悠久且深受居民喜爱的博士山花园中打造一个创新的多功能空间，以为各种娱乐项目和活动提供场所。

设计主要由4个核心理念所推动，包括：将景观与建筑进行无缝整合、将传统的单一用途运动场改造成当代休闲和活动空间、对原网球场建筑进行再利用与重新诠释，以及运用颜色和图形吸引人们前来使用。

通过对原有网球场场地的再利用，设计师创造了一个全新的空间。东面的挡土墙部分向上延伸，被用作一个大型击球墙，并巧妙地成为公园服务设施的西墙。置于此处的这一小型构筑物可以服务于网球场，同时也面向公园的其他区域。与之相类的是，北侧的大遮阳棚在景观层面上发挥了作用，它可同时服务于朝内的活动场地，以及朝外的北侧开阔绿地。设计师在地面和墙体上运用了

具有强烈视觉冲击力的图形，以激发多样的使用行为。

作为灵活的社区空间，这个场地为多种多样的运动和休闲活动提供了场所，包括太极、乒乓球以及其他球类运动、自行车骑行和滑板运动。场地可容纳不同规模的公共活动，例如社区集市和食品摊位，也可利用两个主要区域的自然高差和露天看台的场地条件，举办舞蹈和音乐表演等活动。在场地的四周还设有电力设施，以供插接设备和辅助照明。

原有的砖结构会所经过重新利用，变为座椅平台，而会所拆除后回收的砖块被用于砌筑新的厕所和平台。在会所拆除过程中，人们发现这些砖块上刻有“博士山”的字样，非常独特。在新建的砖砌平台上，这些字样都朝上放置，成为了一种场地历史的印记。场地中原有的裁判席和网球拾球器都得到了回收利用，它们作为往昔岁月的有趣记忆碎片，被安置在场地中。

一个充满动感又引人注目的超级图形成为了活动空间中的醒目元素，为当地不断扩大的社区创造了一个富有趣味的标志性场所。设计师以一种充满趣味的方式来表现场地上具有功能的各种线条，并运用一系列的线和点对场地空间加以引导，以鼓励人们多样化的参与。设计师有意在竖向上使用较少

1. 项目为博士山花园打造了一个可容纳各种娱乐项目和活动的公共空间。

1. The project creates an innovative space with a diverse array of recreation activities and events within the Box Hill Gardens.

收稿时间 RECEIVED DATE: 2015-02-06
中图分类号 / TU986.2 文献标识码 / B

摘要

澳派接受怀特霍斯市政府委托，为博士山花园打造了一个可容纳各种娱乐项目和活动的公共空间。该场地最终的设计方案通过场地历史和记忆的彰显，以及景观和建筑形式的细致整合，成功地体现了一种大胆的当代审美。设计师为这个不断扩大的社区创造了一个珍贵而独特的公共空间，为场地本身的历史抹上了浓墨重彩的一笔。

关键词

城市公共空间；公园；健康；历史；社区

ABSTRACT

ASPECT Studios was commissioned by the City of Whitehorse to create an innovative space with a diverse array of recreation activities and events within the Box Hill Gardens. The final design of the space successfully embodies a bold contemporary aesthetic with layers of history and memory, and the careful integration of landscape and built form elements. This growing community has been delivered a valued and unique public space that adds to the local history of the site.

KEY WORDS

Urban Public Space; Park; Health; History; Community

译 张保利 田乐

TRANSLATED BY Leo ZHANG Tina TIAN



© Andrew Lloyd



© Andrew Lloyd

- 2.3. 项目将传统的单一用途运动场改造为当代休闲和活动空间。
4. 平面图
- 2.3. The project provides a contemporary recreational and events surface that progresses from the traditional singular-use sports court.
4. Site plan

的材质（现以回收利用的砖块为主，辅以抛光的预制混凝土露天座椅和精加工的镀锌钢材），契合了公园的环境和氛围。而水平方向的地面铺装（蓝色柏士壁铺面）所形成的强烈视觉图形和这种竖向的材质组合形成了鲜明对比。

设计师围绕场地设计了一条1km长的小径，以供使用者散步或慢跑；小径首尾相连，并与多功能区域相衔接。

该项目为社区居民参与和使用公园空间展示了一种新的方式，它超越了在公共空间通常预先设定单一活动类型的传统方式。这

个新的多功能场地允许人们进行灵活使用，并在有限的区域内提供了多样的休闲和体育活动。设计师为使用者提供了各种服务设施，以鼓励人们在全年中任何时间、任何天气条件下都来使用并参与其中。由此，设计师为这个不断扩大的社区（包括新迁居民、工人，和庞大的养老人群）创造了一个珍贵而独特的公共空间，为场地本身的历史抹上了浓墨重彩的一笔。

该场地最终的设计方案通过对场地历史和记忆的彰显，以及景观和建筑形式的细致整合，成功地体现了一种大胆的当代审美。LAF

项目地址:
澳大利亚白马市博士山商业区

项目面积:
3 000m²

项目委托:
怀特霍斯市政委员会

景观设计:
澳派景观设计工作室

设计团队:
澳派景观设计工作室（首席顾问、景观设计）
NMBW建筑设计事务所（建筑设计）
怀特霍斯市政委员会（艺术与娱乐开发）
GTA顾问公司（土木工程与服务）
FORM结构设计公司（结构工程）
Martin Butcher灯光设计公司（灯光设计）

建成时间:
2013年

所获奖项:
2013澳大利亚景观设计师协会维多利亚州设计奖
2014澳大利亚设计奖景观设计金奖
2014维多利亚建筑奖城市设计奖

LOCATION:
Box Hill, City of Whitehorse, Australia

AREA (SIZE):
3,000 m²

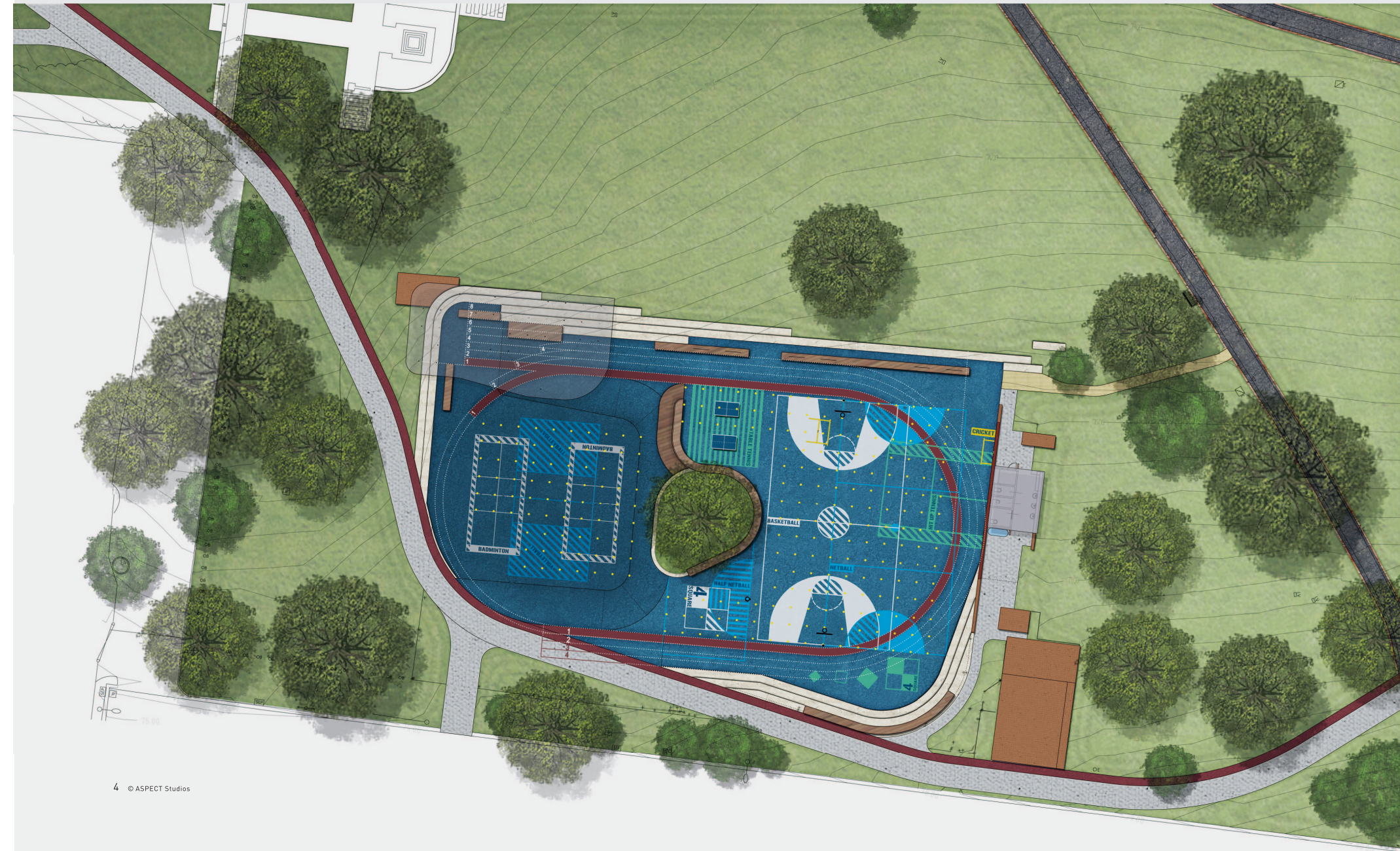
CLIENT:
Whitehorse City Council

LANDSCAPE ARCHITECTURE:
ASPECT Studios

PROJECT TEAM:
ASPECT Studios (Lead Consultant and Landscape Architect)
NMBW Architecture Studio (Architect)
Whitehorse City Council (Arts and Recreation Development)
GTA Consultants (Civil Engineering and Services)
FORM Structures (Structural Engineering)
Martin Butcher Lighting Design (Lighting)

COMPLETION TIME:
2013

AWARDS:
2013 AILA Victoria Awards — Design
2014 Melbourne Design Awards — Landscape Design Gold Winner
2014 Victorian Architecture Awards — Urban Design Award



4 © ASPECT Studios



© Andrew Lloyd

5. 通过运用一系列的线和点对场地空间加以引导，鼓励了人们的多样化使用。
 6. 地面和墙体上运用了具有强烈视觉冲击力的图形，以激发多样的使用行为。
5. A series of lines and dots are used to encourage alternate ways to engagement.
 6. The color and graphics are used to encourage diverse activities.

Box Hill Gardens is a historical park within the rapidly transforming urban centre of Box Hill, 14 kilometres from Melbourne. The Master Plan of 2011 proposed a shift in the usability of the park with new recreation elements and the rejuvenation of existing park spaces. This was in response to the increased density and population using the park as well as accommodating new recreational activities reflecting Box Hill's contemporary cultural mix.

ASPECT Studios and NMBW Architecture Studio were commissioned by the Whitehorse City Council to create an innovative multi-purpose space with a diverse array of recreation activities and events within the historic and well-loved Box Hill Gardens.

Four key concepts have driven the

design that include the seamless integration of landscape and architecture, the creation of a contemporary recreational and events surface that progresses from the traditional singular-use sports court, the recycling and reinterpretation of the former tennis club and the use of colour and graphics to encourage use.

The new space has been made by re-using the original terraces of the previous tennis courts. The retaining wall on the east side extends to form a large hit-up wall, which makes a double-use of the rear of the amenities block structure. This small building has been sited to service the courts and also face the park beyond. Similarly, the large shade roof at the northern end works at a landscape-scale, facing both inwards and out to the northern expanse of parkland.

Strong graphics join floor and wall, provoking different uses and occupations.

The surface functions as a flexible community space, providing courts for multiple sport and recreation activities, including tai chi and table tennis as well as other ball sports, cycling and skateboarding. The surface is also designed to accommodate different scales of public events, such as community markets, food stalls, dance and music performances utilizing the natural terracing of the two main levels and bleacher-seating. Power infrastructure has been provided at either end of the space to allow for plug-in sound and additional lighting.

The footprint of the original brick clubhouse has been reused as seating platforms, while recycled bricks from its



© Andrew Lloyd



© Andrew Lloyd

7. 一个充满动感又引人注目的超级图形成为了活动空间中的醒目元素，为当地社区创造了一个富有趣味的标志性场所。
8. 会所拆除后回收的砖块被用于砌筑新的平台。
9. 露天看台

7. A series of lines and dots are used to encourage alternate ways to engagement.
8. Recycled bricks from the original clubhouse are utilized for the construction of the new platform.
9. Bleacher seating



© Andrew Lloyd

demolition have been utilized within the construction of a new toilet block and brick platforms. Clubhouse bricks are stamped "Box Hill", a peculiarity revealed during the dismantling of the clubhouse. This text is laid face up within areas of the brick platforms acting as an historical marker. The umpire's chair and tennis roller from the previous courts have been salvaged and installed as playful remnants of the previous life of the site.

A dynamic and engaging super graphic defines the play areas and creates an iconic and playful destination for the growing community. Functional line marking is presented in a playful manner and embellished with a series of lines and dots to encourage alternate ways to engagement. The deliberate use of a reduced vertical material palette (existing recycled brick; supplemented with glazed, precast concrete bleachers, and fine galvanized steel) is sympathetic to the park environment and context. The strong visual graphic applied to the horizontal surfacing (blue plexipave)

contrasts to this vertical palette.

A 1 km long path for walking and running has been added to the space to circumnavigate the gardens, with the start and finish lines dovetailing into the multi-purpose area.

The project demonstrates a new way for the community to inhabit and use park spaces, beyond the traditional singular use activity typically prescribed within public spaces. The new multi-purpose surface provides flexibility in use and a diverse range of recreational and sporting pursuits within a limited area. Amenity is provided to encourage use and occupation at all times of the year and weather conditions. This growing community — of new residents and workers and large hospital population — has been delivered a valued and unique public space that adds to the local history of the site.

The final design of the space successfully embodies a bold contemporary aesthetic with layers of history and memory, and the careful integration of landscape and built form elements. **LAF**



© Andrew Lloyd