



CTLA-4 (+49A/G) Polymorphism in Type 1 Diabetes Children of Sudanese Population

Khalid E. Khalid Kheiralla^{1,2}

¹Department of Basic Medical Sciences, Faculty of Applied Medical Sciences, Albaha University, Al Bahah, Saudi Arabia

²Department of Biochemistry and Nutrition, Faculty of Medicine, University of Gezira, Wad Madani, Sudan

Address for correspondence Khalid E. Khalid Kheiralla, PhD, Department of Basic Medical Sciences, Faculty of Applied Medical Sciences, Albaha University, Saudi Arabia; Department of Biochemistry and Nutrition, Faculty of Medicine, University of Gezira, Sudan (e-mail: khatahir12@gmail.com).

Global Med Genet 2021;8:11–18.

Abstract

Background Type 1 diabetes mellitus (T1DM) is an organ-specific T cell-mediated autoimmune disease, characterized by destruction of pancreatic islets. Cytotoxic lymphocyte antigen-4 (*CTLA-4*) is a negative regulator of T cell proliferation, thus conferring susceptibility to autoimmunity.

Aims This study aimed to investigate the association of *CTLA-4* +49A/G (rs231775) polymorphism with a risk of T1DM in Sudanese children.

Methods This a case–control study included 100 children with T1DM, referred to the pediatric clinic at referral pediatric teaching hospital in Gezira State-Sudan. Hundred unrelated healthy controls were recruited from departments in the same hospital. Genomic deoxyribonucleic acid (DNA) was extracted from Ethylenediaminetetraacetic Acid (EDTA)-preserved blood using QIAamp DNA Blood Mini Kit (QIAamp Blood) (QIAGEN; Valencia, CA). The polymerase chain reaction PCR restriction fragment length polymorphism (PCR-RFLP) and sequencing were applied for the *CTLA-4* (+49A/G) genotyping. The changes accompanied the polymorphism were evaluated using relevant bioinformatics tools.

Results The genotype and allele frequencies of the *CTLA-4* (+49A/G) polymorphism were significantly different between the patients and controls ($p=0.00013$ and 0.0002 , respectively). In particular, the frequency of the G allele, GG homozygous genotype, and AG heterozygous genotype were significantly increased in patients than in controls ([28% versus 7%, odds ratio (OR)=5.16, 95% confidence interval [CI]=2.77–9.65, $p=0.00$] [12% versus 2%, OR=6.68, CI=1.46–30.69, $p=0.01$] [32% versus 10%, OR=4.24, CI=1.95–9.21, $p=0.00$], respectively). The presence of the G allele (homozygous) showed an influence on the signal peptide polarity, hydrophobicity, and α -helix propensity of the CTLA-protein.

Conclusion The results further support the association of *CTLA-4* (+49A/G) polymorphism and the risk of T1DM in our study population.

Keywords

- ▶ CTLA-4
- ▶ polymorphism
- ▶ type 1 diabetes Mellitus
- ▶ Sudanese

Introduction

Type 1 diabetes mellitus (T1DM) is an organ-specific and T cell-mediated autoimmune disease primarily affects children and adolescents. Cytotoxic lymphocyte antigen-4 (*CTLA-4*) is a member of the immunoglobulin superfamily

that is expressed on the surface of activated T cells and downregulates T cell function.¹ In the mid-nineties, the *CTLA-4* gene was reported as one of the important susceptibility genes in T1DM,² since that time, attentions have been made toward the exact role of this gene. Polymorphisms in the *CTLA-4* gene have been identified and were found to be

published online
February 15, 2021

DOI <https://doi.org/10.1055/s-0041-1723008>.
ISSN 2699-9404.

© 2021. The Author(s).

This is an open access article published by Thieme under the terms of the Creative Commons Attribution License, permitting unrestricted use, distribution, and reproduction so long as the original work is properly cited. (<https://creativecommons.org/licenses/by/4.0/>)
Georg Thieme Verlag KG, Rüdigerstraße 14, 70469 Stuttgart, Germany

associated with susceptibilities to a wide range of T cell-mediated autoimmune diseases.³

One of these polymorphisms was the *CTLA-4* +49A/G single nucleotide polymorphism (SNP) that causes a threonine-to-alanine substitution in codon 17, which altered protein expression⁴ and T cell activation.⁵ Since the +49A/G SNP is located in the N-terminal of the signal peptide sequence of the *CTLA-4*, which is not a part of the mature protein, the substitution of threonine to alanine may affect the proper translocation of the growing *CTLA-4* peptide from ribosome to endoplasmic reticulum (ER) lumen, as a result of alteration in signal peptide hydrophobicity and helix propensity,⁶ rendered possible evidence of defective *CTLA-4* targeting to the cell surface.⁷

The association of *CTLA-4* polymorphisms with the risk to develop T1DM has been investigated in different populations with conflicting data.⁸ Recent study has shown no association between the aforementioned SNPs and susceptibility to T1DM among Sudanese adults.⁹ Since Sudanese population is characterized by multiethnic groups, the search for further association between groups of different age and ethnicity could likely help pursuing conclusive remarks about this association. In the present study, we investigated the association of the *CTLA-4* +49A/G SNP with the risk of T1DM among Sudanese children and the proposed effect of this polymorphism on the *CTLA-4* signal peptide instability.

Subjects and Methods

Patients and Sampling

This is a case-control study that encompasses 100 Sudanese children with T1DM (48 males and 52 females; mean age, 11.49 ± 3.38), referred to the diabetic clinic at Wad Medani Pediatric Hospital in Gezira state, Sudan. The selected patients were clinically diagnosed with T1DM, their disease duration was more than 1 year, and they are dependent on insulin therapy. The patients were classified based on the hemoglobin A1c (HbA_{1c}) levels into poor glycemic control $>8\%$ and well glycemic control $\leq 8\%$, as stated on the American Diabetes Association (ADA) and Japan Diabetes Society (JDS) guidelines.^{10,11} The demographic characteristics, clinical presentations, HbA_{1c} levels, concomitant complications, and the presence of other autoimmune diseases were all reported in well-structured questionnaire. The control group includes 100 unrelated healthy children (44 males and 56 females; mean age, 11.49 ± 3.38) without or family history of T1DM or any other autoimmune diseases. The controls were recruited from departments in the same hospital, they lived in the same state, and they have ethnic background similar to the patients.

The study met the University of Gezira ethical committee review board requirements, and granted the permission to be performed from the hospital clinical directorate and the diabetic clinical staff as well. Signed written informed consent was obtained from the parents or guardians of all study subjects, after they informed about the study objectives and procedures.

Five-milliliter (5 mL) blood sample was taken in the morning (before breakfast) in EDTA container. Serum was

separated to measure the HbA_{1c} by chromatographic-spectrophotometer ion exchange (BioSystems, United States), and the pellet used for the deoxyribonucleic acid (DNA) analysis of *CTLA-4* +49A/G genotypes.

DNA Extraction and CTLA-4 Amplification

Genomic DNA was extracted using QIAamp DNA Blood Mini Kit (QIAamp Blood) (QIAGEN, Valencia, CA). The desired fragment of the *CTLA-4* gene was amplified by polymerase chain reaction (PCR) using *CTLA-4* gene-specific forward ($5'$ -gCTCTACCTCTgAAgACCT- $3'$) and the reverse ($5'$ -AgTCTCACTCACCTTTgCag- $3'$) primers, which amplified 207 fragments of *CTLA-4* gene.

Approximately, 0.2 mg genomic DNA was amplified in 25 mL PCR reaction containing 10 mM of each dNTPs (i-StarTaq, iNtRon Biotech, Korea), 5 U of Taq DNA polymerase (i-StarTaq, Korea), 2.5 mL of 10X PCR buffer, and 100 pmol/mL of each primer (Sinagen, Iran). Reaction conditions were performed in PCR thermocycler (Eppendorf, Germany), starting with initial denaturation at 94°C for 4 minutes followed by 34 cycles of denaturation at 94°C for 30 second annealing at 60°C for 30 seconds elongation at 72°C for 2 minutes, and final extension at 72°C for 5 minutes. Then 5 μL of the PCR product was run in 2% agarose gel electrophoresis to check the target PCR product at 207 bp length (\rightarrow Fig. 1A).

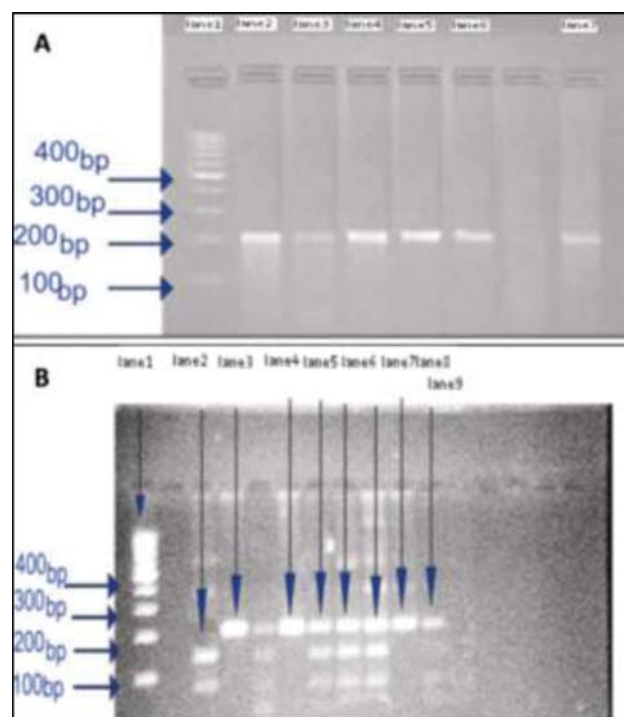


Fig. 1 (A) Confirmation of the genomic deoxyribonucleic acid (DNA) in patients and controls. Lane 1: DNA ladder 100 bp. The band appeared in lane 2 to 7 showed the polymerase chain reaction (PCR) product length of 207 bp for the *CTLA-4* target gene in exon 1. (B) Fragment size for *CTLA-4* (+49A/G) polymorphism in diabetic patients and controls by FastDigest BbvI (LSP1109I, Germany). Lane 1: DNA ladder 100 bp; the bands in lane 3, 4, 7, and 8 represent allele A at 207 bp, whereas fragments of band G at 168 and 49 bp appear in lane 2, 5, and 6. Lanes 5, 6, 7: heterozygous (AG) genotype. Lanes 3, 4, 7, 8: homozygous (AA) genotype. Lane 2 homozygous (GG). *CTLA-4*, cytotoxic T-lymphocyte antigen-4.

Restriction Fragment Length Polymorphism Analysis

Restriction fragment length polymorphism (RFLP) analysis was conducted using FastDigest BbvI (Fermentas, Germany) in 30 μ L total volume that includes 10 μ L amplification product, 1.0 μ L (10 U/mL) of the restriction enzyme, 2.0 μ L 10X fast digest green buffer, and 17 μ L nuclease-free water. All components were mixed gently, spun down, and incubated for 10 minutes at 37°C followed by heating at 65°C for 10 minutes. DNA fragments were visualized in 2.0% agarose gels exposed to UV light in a gel documentation system (Ingenus, United States). The restriction cut showed two fragments (49/168 bp) for the G

allele and one fragment (207bp) for A allele (**Fig. 1B**). Direct DNA sequencing by Sanger method on an ABI 3730 sequencer (Macrogen, South Korea) was performed for 20 patients and 20 control by using 25 μ L of each PCR result independently, to validate the RFLP results. The sequencing results were analyzed using BLAST and Clustal X at the NCBI webpage.

Bioinformatics Analysis Tools

I-mutant version 3 (<http://gpcr2.biocomp.unibo.it/cgi/predictors/1-Mutant3.0/>) was used to predict the effect of the CTLA-4 +49A/G SNP in proteins stability.¹²

Table 1 Demographic characteristics of the patients and the controls

Characteristics		T1DM (n = 100)	Controls (n = 100)
Gender	Male	48	56
	Female	52	44
Age group/yrs.	Mean \pm SD	11.49 \pm 3.38	10.24 \pm 4.31
	<5	2	24
	5–9.9	26	38
	10–14.9	50	30
	\geq 15	22	8
Residence	Rural	80	54
	Urban	2 (2.0)	46
Insulin dependent		All	None
Age at disease onset (years)		3–16	NA
T1DM duration		4.35 \pm 3.02	NA
Family history of diabetes	Negative	64	NA
	Positive	36	NA
Glycemic control	HbA _{1c} mean level	10.68 \pm 2.17	6.05 \pm 1.40 ^a
	HbA _{1c} <8%	12	94
	HbA _{1c} >8%	88	6
Breast feeding	Yes	45	NA
	No	55	NA
BMI (kg/m ²)	Range	16.74 \pm 2.90	19.4 \pm 4.74 ^a
	Underweight (<18.5 kg/m ²)	80	52
	Normal (18.5–24.9 kg/m ²)	18	28
	Overweight (25–29.9 kg/m ²)	1	16
	Obese (\geq 30 kg/m ²)	1	4
On treatment	Regular	All	NA
	Not regular	–	NA
Disease complications	Eye complication	9	NA
	Renal complication	1	NA
	Hypoglycemia	45	NA
	Ketoacidosis	63	NA
Autoimmune diseases	No	92	NA
	Celiac disease	8	NA

Abbreviations: BMI, body mass index; HbA_{1c}, hemoglobin A1c; NA, not applicable; SD, standard deviation; T1DM, type 1 diabetes mellitus.

^ap < 0.05.

Sorting Intolerant from Tolerant (SIFT) was used to predict whether an amino acid substitution affects protein function or not, based on the degree of amino acids conservation residues in sequence alignments derived from closely related sequences. The main underlying principle of this

program is that it generates alignments with large number of homologous sequences, and assigns scores to each residue ranging from zero to one. Score close to zero indicates evolutionary conservation of the gene and intolerance to substitution, while score close to one indicates only

Table 2 Genotypes and alleles frequencies of CTLA-4 +49A/G polymorphism in T1DM patients and controls

CTLA-4 variants	T1DM (n = 100)	Controls (n = 100)	OR	95% CI	p-Value
Genotype frequencies^a					
AA (normal)	56 (56)	88 (88)	0.17	0.08–0.36	0.00
AG (heterozygous)	32 (32)	10 (10)	4.24	1.95–9.21	0.00
GG (homozygous)	12 (12)	2 (2)	6.68	1.46–30.69	0.01
Allele frequencies^b					
*A allele	144 (72)	186 (93)	1.94	0.10–0.36	0.00
**G allele	56 (28)	14 (7)	5.16	2.77–9.65	0.00

Abbreviations: CI, confidence interval; CTLA-4, cytotoxic T-lymphocyte antigen-4; OR, odds ratio; T1DM, type 1 diabetes mellitus.

^ap = 0.00013.

^bp = 0.0002.

*Adenine.

**Guanine.

Table 3 The SIFT score for the CTLA-4 SNP (rs231775)

SNP ID	Organism/Build	Ref allele	Alt allele	Amino acid change	Gene name	SIFT score	SIFT prediction
rs231775	Homo_sapiens/GRCh37.74	A	G	T17A	CTLA-4	0.06	Tolerated

Abbreviations: CTLA-4, cytotoxic T-lymphocyte antigen-4; SIFT, Sorting Intolerant from Tolerant; SNP, single nucleotide polymorphism.

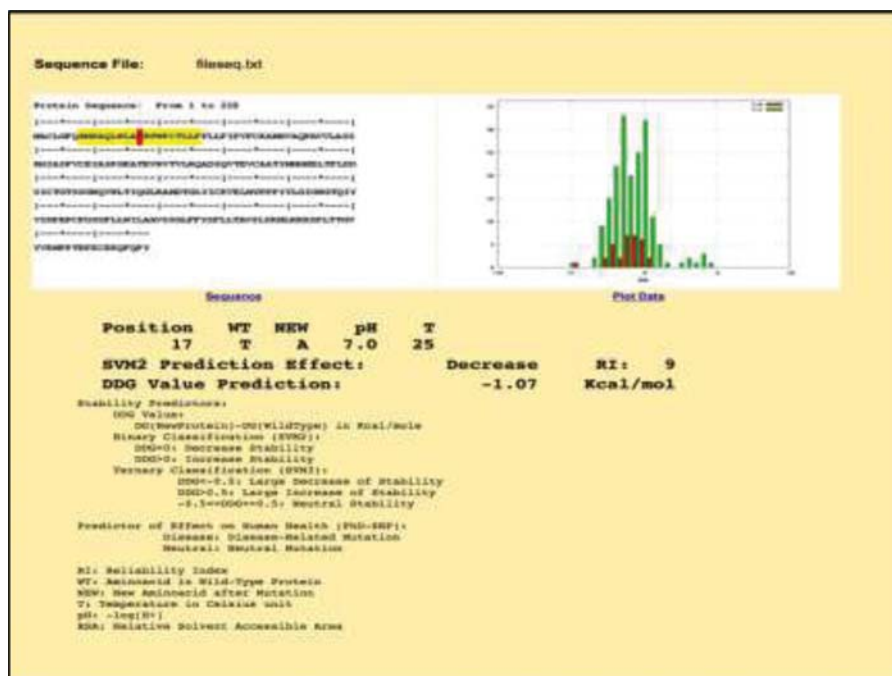


Fig. 2 Prediction of protein stability by 1-mutant program.

tolerance to substitution.¹³ The algorithmic calculation methods of the hydrophobicity¹⁴ and α -helix propensity¹⁵ that accompanied the *CTLA-4* T17A change were also determined to help in predicting the alteration in the *CTLA-4* signal peptide function.

Data Analysis

Statistical analysis was performed using SPSS software package, version 23 (SPSS, Inc.; Chicago, Illinois, United States). The mean difference between study group was assessed by using the Student's *t*-test. Qualitative data were presented as number of (%), the comparisons of genotypes and alleles frequencies between patients and controls were assessed using the chi-squared (χ^2) test and the Fisher's exact tests, and levels of risk for genotypes and alleles were expressed as odds ratio (OR) with a 95% confidence interval (95% CI). Deviation from Hardy-Weinberg equilibrium was performed by applying the equation ($p^2 + 2pq + q^2$) to compare the observed frequencies with the expected frequencies of the different genotype distribution in patients and controls by using Pearson's χ^2 test of independence in SPSS. Statistical significance was considered at $p < 0.05$.

Results

The study included 100 children with T1D (48 males and 52 females) and 100 unrelated healthy controls (44 males and 56 females).

►Table 1 showed the sociodemographic and clinical characteristics of study groups. There were no significant differences in the age and gender between patients and controls ($p > 0.05$). Compared with the controls, the patients showed significant high mean levels of HbA_{1c} ($p = 0.0003$) and low mean level of body mass index ($p = 0.01$).

As shown in ►Table 2, the frequency distribution of *CTLA-4* +49 A/G genotypes and alleles showed significant differences between the patients and the controls ($p = 0.00013$ and 0.0002 , respectively). The genotypic distribution was not deviated from the Hardy-Weinberg equilibrium in patients ($\chi^2 = 5.19$, $df = 2$, $p = 0.08$) and controls ($\chi^2 = 4.82$, $df = 2$, $p = 0.09$).

The GG homozygous and AG heterozygous genotypes were more frequent in patients than in controls (12 vs. 2% and 32 vs. 10%, respectively). This difference was statistically significant ($p = 0.01$, OR = 6.68, 95% CI = 1.46–30.69 vs. $p = 0.00$, OR = 4.24, 95% CI = 1.95–9.21, respectively). At the same time, the *CTLA4A16* (G) allele was significantly high in frequency in patients than in controls (28 vs. 7%, OR = 5.16, 95% CI = 2.77–9.56, $p = 0.00$).

SIFT analysis score for the *CTLA-4* SNP (rs231775) position at codon 17 (T17A) indicates evolutionary conservation of the gene and intolerance to substitution (►Table 3) that may decrease the *CTLA-4* protein stability as predicted by the I mutant analysis (►Fig. 2), most likely by affecting the polarity (from polar threonine to nonpolar alanine) of the *CTLA-4* signal peptide chain (►Fig. 3). The threonine to alanine substitution at position 17 also leads to increase in the hydrophobicity and α -helix propensity, two properties known to be important in the *CTLA-4* signal peptide function (►Fig. 4).

Discussion

T1DM is one of the most frequent chronic diseases in children, and has become health problem in developing countries.¹⁷ Recently, associated studies have been conducted to address the association of polymorphisms in the *CTLA-4* gene as a candidate gene with several autoimmune

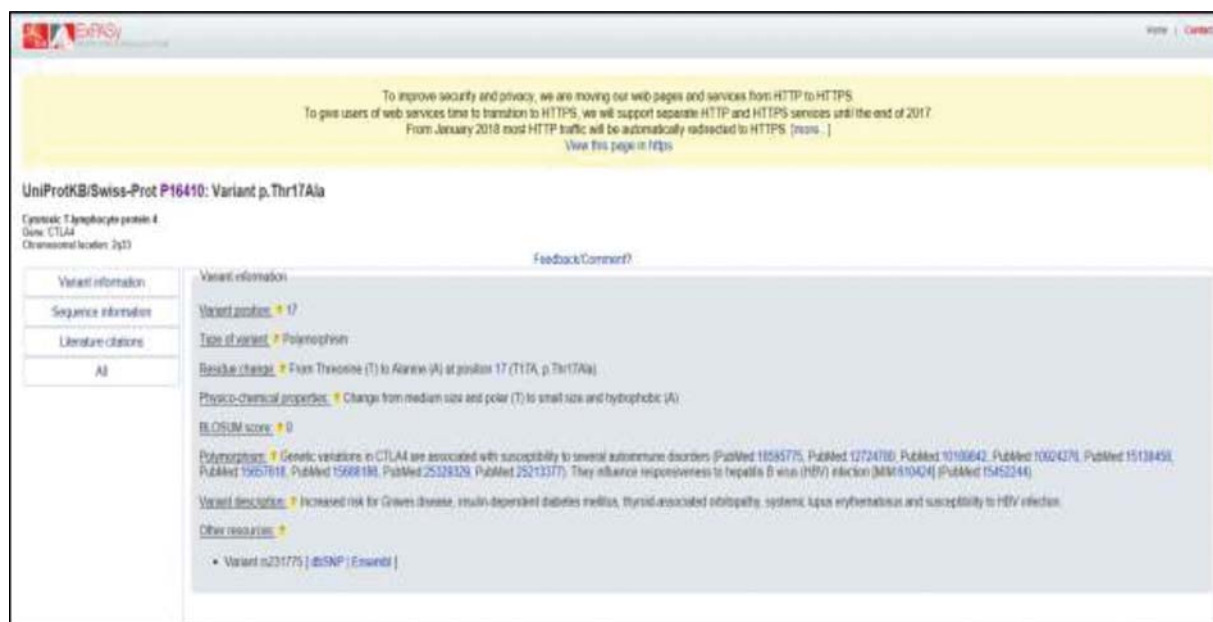


Fig. 3 The variation formation of the *CTLA-4* SNP. This figure shows the variant formation for the *CTLA-4* (rs231775) SNP position at codon 17 (T/A), this SNP affects the polarity (from polar threonine to nonpolar alanine) of the *CTLA-4* signal peptide chain. *CTLA-4*, cytotoxic T-lymphocyte antigen-4; SNP, single nucleotide polymorphism.

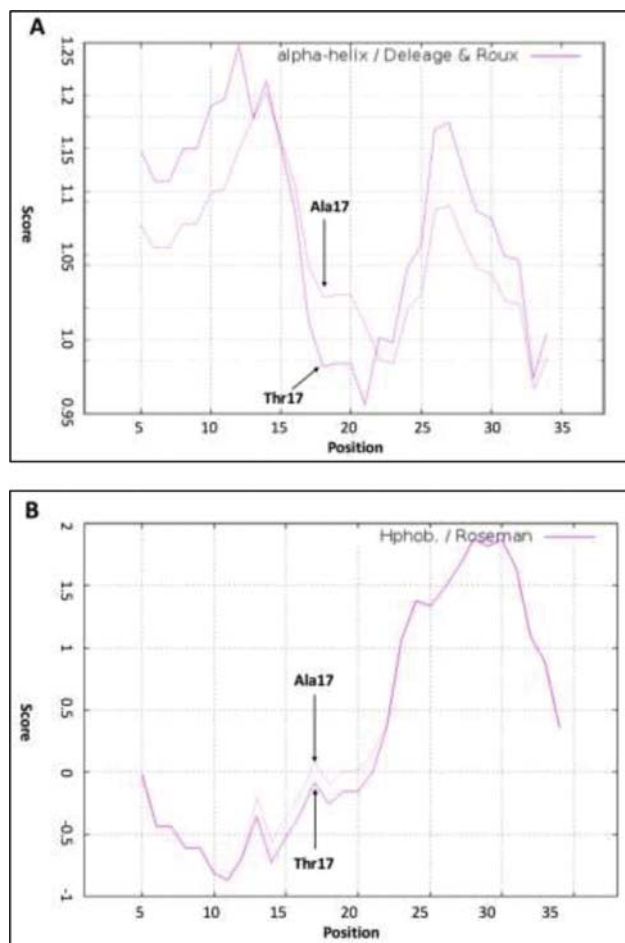


Fig. 4 The prediction of signal peptide function. Signal peptide function could be influenced by factors that can be predicted by using algorithms available at ProtScale (us.expasy.org/cgi-bin/protscale.pl). (A) α -helix propensity was calculated by Roseman method (1988), and (B) hydrophobicity by the Deléage and Roux Method (1987). The CTLA-4 T17A change resulted in a higher propensity to form α -helices in the area directly adjacent to the change and an increased in hydrophobicity. CTLA-4, cytotoxic T-lymphocyte antigen-4.

diseases,⁶ particularly T1DM.⁷ The CTLA-4 +49A/G gene polymorphism was found to be the only known SNP that causes an amino acid exchange (threonine to alanine or +49 A/G) in exon 1 in the leader peptide sequence of the CTLA-4 protein, which can be associated with altered protein expression⁴ and T cell activation.⁵

We studied the CTLA-4 (+49 A/G) polymorphism because it has been the most widely analyzed variant in different ethnic groups, and still with inconsistent findings.^{16,18–41} Furthermore, this is the first study investigated the effect of +49A/G polymorphism among Sudanese children with T1DM, bearing in mind a recent data investigated this polymorphism among Sudanese adults with T1DM.⁹

Our study found that the frequency of G allele and GG homozygous genotype was significantly high in patients than in controls ($p = 0.01$). This finding consistent with previous studies in populations from our continent includes Egyptians^{16,18} and Tunisians,¹⁹ together with other populations such as Indian,²⁰ Caucasian and Asian,^{21,22} Iranians,^{23–25} Estonian and Finnish,²⁶ Chilean,²⁷ and Russian.²⁸ Other

studies among Sudanese,⁹ Ghanaian,²⁹ and other populations,^{30,31} did not prove this association. The OR provided by the GG homozygous genotype and G allele were high, suggesting their additive effect on the AG heterozygous genotype ($p = 0.00$) as seen in our study.

The presence of the +49A/G at-risk (G) allele in the CTLA-4 molecule has been shown to be effective in inhibiting the activated T cell proliferation in vitro.³² This perception coincides with the high frequency of G allele among our patients, and found to be consistent with results from other populations including Egyptians,^{16,33} Iranian,²⁵ Turkish,³⁴ Croatians,³⁵ Belgian,³⁶ Mexican-American, and Korean,³⁷ and meta-analysis study in Asian population.³⁸

However, lack of association between the aforementioned polymorphism and T1DM has been also reported in populations from Sudan,⁹ Czech,³¹ Turkey,³⁴ Korea,³⁸ Chile,³⁹ Portugal,⁴⁰ and Azerbaijan.⁴¹ The discrepancy in results between ethnic groups may be attributed to genetic heterogeneity relevant to ethnic diversity, to polymorphism co-players (environmental factors, etc.), or to differences in methodologies and sample size used.

The CTLA4A16 (G) allele (homozygotes) located at the N-terminal of conserved position in the loop region of the signal peptide sequence introduces the hydrophobic amino acid alanine instead of threonine in the signal peptide sequence. This introduction, and based on our bioinformatics analysis, was somewhat associated with evolutionary conservation of the gene and intolerance that may decrease the CTLA-4 protein stability, affecting the polarity, and increase hydrophobicity and α -helix propensity. These properties are collectively known to be important in signal peptide function. The consequences of these alterations may result in an aberrantly glycosylated product, alteration in proteins folding, and/or interaction with ER chaperones, which may finally lead to less functional expression of CTLA-4 at the cell surface of their T cells than the normal Thr¹⁶ allele.⁶ It is most likely that the one-third less expression of the mutant homozygous (GG) on the cell surface of T cells than the normal homozygous (AA) can lower the affinity of CTLA-4 for B7 molecule, skewing the negative balance exerted for damping T cell activation.^{7,42}

The small sample size in this study, concomitant with the large discrepancy in Sudanese ethnic groups, makes the power of association between the CTLA-4 +49 A/G (rs231775) polymorphism and T1DM relatively weak and the overall data are not fully conclusive.

Conclusion

The study supported the proposition that CTLA-4 +49 A/G polymorphism is associated with the risk of T1DM in Sudanese children, and the presence of the CTLA-4 Thr¹⁶ (G) allele (homozygous) represents an evolutionary change predisposed the risk for T1DM. This data warrant further studies with larger study population to verify our findings.

Ethical Approval

The informed consent was obtained from all the subjects and the study was approved by the University of Gezira

Ethics Committee (UGEC) and was performed in accordance with Helsinki Declaration of 1975.

Conflict of Interest

None declared.

Acknowledgments

I would like to thank Dr. Mohammed Osman A/Wahid at the National Cancer Institute (NCI), University of Gezira (U of G), Sudan, for his technical support in the RFLP. I would also like to show earnest gratitude to the medical staff at Wad Medani Pediatric Hospital for their continual assistance during sampling.

References

- Zheng P, Wu Y, Guo Y, Lee C, Liu Y. B7-CTLA4 interaction enhances both production of antitumor cytotoxic T lymphocytes and resistance to tumor challenge. *Proc Natl Acad Sci U S A* 1998;95(11):6284–6289
- Linsley PS, Brady W, Urnes M, Grosmaire LS, Damle NK, Ledbetter JA. CTLA-4 is a second receptor for the B cell activation antigen B7. *J Exp Med* 1991;174(03):561–569
- Wang XB, Giscombe R, Yan Z, Heiden T, Xu D, Lefvert AK. Expression of CTLA-4 by human monocytes. *Scand J Immunol* 2002;55(01):53–60
- Carreno BM, Bennett F, Chau TA, et al. CTLA-4 (CD152) can inhibit T cell activation by two different mechanisms depending on its level of cell surface expression. *J Immunol* 2000;165(03):1352–1356
- Ostrov DA, Shi W, Schwartz JC, Almo SC, Nathenson SG. Structure of murine CTLA-4 and its role in modulating T cell responsiveness. *Science* 2000;290(5492):816–819
- Anjos S, Nguyen A, Ounissi-Benkalha H, Tessier MC, Polychronakos C. A common autoimmunity predisposing signal peptide variant of the cytotoxic T-lymphocyte antigen 4 results in inefficient glycosylation of the susceptibility allele. *J Biol Chem* 2002;277(48):46478–46486
- Mäurer M, Loserth S, Kolb-Mäurer A, et al. A polymorphism in the human cytotoxic T-lymphocyte antigen 4 (CTLA4) gene (exon 1 +49) alters T-cell activation. *Immunogenetics* 2002;54(01):1–8
- Kavvoura FK, Ioannidis JP. CTLA-4 gene polymorphisms and susceptibility to type 1 diabetes mellitus: a HuGE Review and meta-analysis. *Am J Epidemiol* 2005;162(01):3–16
- Alshareef SA, Omar SM, Hamdan HZ, Adam I. Cytotoxic T-lymphocyte antigen-4 +49A/G polymorphisms in Sudanese adults with type 1 diabetes and latent autoimmune diabetes. *BMC Res Notes* 2019;12(01):769
- American Diabetes Association. Classification and diagnosis of Diabetes. *Diabetes Care* 2017;40(Suppl 1):S11–S24
- Haneda M, Noda M, Origasa H, et al. Japanese clinical practice guideline for diabetes 2016. *Diabetol Int* 2018;9(01):1–45
- Capriotti E, Calabrese R, Fariselli P, Martelli PL, Altman RB, Casadio R. WS-SNPs&GO: a web server for predicting the deleterious effect of human protein variants using functional annotation. *BMC Genomics* 2013;14(Suppl 3):S6
- Ng PC, Henikoff S. Predicting deleterious amino acid substitutions. *Genome Res* 2001;11(05):863–874
- Deléage G, Roux B. An algorithm for protein secondary structure prediction based on class prediction. *Anal Biochem* 1987;163:292–297
- Roseman MA. Hydrophilicity of polar amino acid side-chains is markedly reduced by flanking peptide bonds. *J Mol Biol* 1988;200(03):513–522
- Mosaad YM, Elsharkawy AA, El-Deek BS. Association of CTLA-4 (+49A/G) gene polymorphism with type 1 diabetes mellitus in Egyptian children. *Immunol Invest* 2012;41(01):28–37
- Osei K, Schuster DP, Amoah AG, Owusu SK. Diabetes in Africa. Pathogenesis of type 1 and type 2 diabetes mellitus in sub-Saharan Africa: implications for transitional populations. *J Cardiovasc Risk* 2003;10(02):85–96
- Saleh HM, Rohowsky N, Leski M. The CTLA4-819 C/T and +49 A/G dimorphisms are associated with type 1 diabetes in Egyptian children. *Indian J Hum Genet* 2008;14(03):92–98
- Benmansour J, Stayoussef M, Al-Jenaidi FA, et al. Association of single nucleotide polymorphisms in cytotoxic T-lymphocyte antigen 4 and susceptibility to autoimmune type 1 diabetes in Tunisians. *Clin Vaccine Immunol* 2010;17(09):1473–1477
- Gunavathy N, Asirvatham A, Chitra A, Jayalakshmi M. Association of CTLA-4 and CD28 gene polymorphisms with type 1 diabetes in South Indian population. *Immunol Invest* 2019;48(06):659–671
- Wang B, Du W, Jia Y, Zhang X, Ma G. Cytotoxic T-lymphocyte-associated protein 4 +49A/G polymorphisms contribute to the risk of type 1 diabetes in children: An updated systematic review and meta-analysis with trial sequential analysis. *Oncotarget* 2017;8(06):10553–10564
- Tang ST, Tang HQ, Zhang Q, Wang CJ, Wang YM, Peng WJ. Association of cytotoxic T-lymphocyte associated antigen 4 gene polymorphism with type 1 diabetes mellitus: a meta-analysis. *Gene* 2012;508(02):165–187
- Ahmadi S, Rostamzadeh J, Khosravi D, Shariati P, Shakiba N. Association of CTLA-4 gene 49A/G polymorphism with the incidence of type 1 diabetes mellitus in the Iranian Kurdish population. *Pak J Biol Sci* 2013;16(24):1929–1935
- Ranjouri MR, Aob P, Mansoori Derakhshan S, Shekari Khaniani M, Chiti H, Ramazani A. Association study of *IL2RA* and *CTLA4* gene variants with type I diabetes mellitus in children in the northwest of Iran. *Bioimpacts* 2016;6(04):187–193
- Mojtahedi Z, Omrani GR, Doroudchi M, Ghaderi A. CTLA-4 +49 A/G polymorphism is associated with predisposition to type 1 diabetes in Iranians. *Diabetes Res Clin Pract* 2005;68(02):111–116
- Douroudis K, Laine AP, Heinonen M, et al. Association of CTLA4 but not ICOS polymorphisms with type 1 diabetes in two populations with different disease rates. *Hum Immunol* 2009;70(07):536–539
- Angel B, Balic I, Santos JL, Codner E, Carrasco E, Pérez-Bravo F. Associations of the CTLA-4 polymorphisms with type 1 diabetes in a Chilean population: case-parent design. *Diabetes Res Clin Pract* 2009;85(03):e34–e36
- Chistiakov DA, Savost'anov KV, Nosikov VV. CTLA4 gene polymorphisms are associated with, and linked to, insulin-dependent diabetes mellitus in a Russian population. *BMC Genet* 2001;2:6
- Osei-Hyiaman D, Hou L, Zhiyin R, et al. Association of a novel point mutation (C159G) of the CTLA4 gene with type 1 diabetes in West Africans but not in Chinese. *Diabetes* 2001;50(09):2169–2171
- Kumar N, Kaur G, Kanga U, et al. CTLA4+49G allele associates with early onset of type 1 diabetes in North Indians. *Int J Immunogenet* 2015;42(06):445–452
- Cinek O, Drevínek P, Sumník Z, et al. The CTLA4 +49 A/G dimorphism is not associated with type 1 diabetes in Czech children. *Eur J Immunogenet* 2002;29(03):219–222
- Kouki T, Sawai Y, Gardine CA, Fisfalen ME, Alegre ML, DeGroot LJ. CTLA-4 gene polymorphism at position 49 in exon 1 reduces the inhibitory function of CTLA-4 and contributes to the pathogenesis of Graves' disease. *J Immunol* 2000;165(11):6606–6611
- Arafa RM, Desouky SM, Emam SM, Abed NT, Mohamed SY. Detection of cytotoxic T-lymphocyte associated antigen-4 gene polymorphism in type 1 diabetes mellitus. *Egypt J Immunol* 2015;22(01):49–57
- Çelmeli F, Türkkehraman D, Özel D, Akçurin S, Yegin O. CTLA-4 (+49A/G) polymorphism and type-1 diabetes in Turkish children. *J Clin Res Pediatr Endocrinol* 2013;5(01):40–43

- 35 Korolija M, Renar IP, Hadzija M, et al. Association of PTPN22 C1858T and CTLA-4 A49G polymorphisms with type 1 diabetes in Croats. *Diabetes Res Clin Pract* 2009;86(03):e54–e57
- 36 Van der Auwera BJ, Vandewalle CL, Schuit FC, et al. CTLA-4 gene polymorphism confers susceptibility to insulin-dependent diabetes mellitus (IDDM) independently from age and from other genetic or immune disease markers. The Belgian Diabetes Registry. *Clin Exp Immunol* 1997;110(01):98–103
- 37 Marron MP, Raffel LJ, Garchon HJ, et al. Insulin-dependent diabetes mellitus (IDDM) is associated with CTLA4 polymorphisms in multiple ethnic groups. *Hum Mol Genet* 1997;6(08):1275–1282
- 38 Chen Z, Fei M, Fu D, et al. Association between cytotoxic T lymphocyte antigen-4 polymorphism and type 1 diabetes: a meta-analysis. *Gene* 2013;516(02):263–270
- 39 Balic I, Angel B, Codner E, Carrasco E, Pérez-Bravo F. Association of CTLA-4 polymorphisms and clinical-immunologic characteristics at onset of type 1 diabetes mellitus in children. *Hum Immunol* 2009;70(02):116–120
- 40 Lemos MC, Coutinho E, Gomes L, et al. The CTLA4 +49 A/G polymorphism is not associated with susceptibility to type 1 diabetes mellitus in the Portuguese population. *Int J Immunogenet* 2009;36(03):193–195
- 41 Ahmedov G, Ahmedova L, Sedlakova P, Cinek O. Genetic association of type 1 diabetes in an Azerbaijanian population: the HLA-DQ, -DRB1*04, the insulin gene, and CTLA4. *Pediatr Diabetes* 2006;7(02):88–93
- 42 Kristiansen OP, Larsen ZM, Pociot F. CTLA-4 in autoimmune diseases—a general susceptibility gene to autoimmunity? *Genes Immun* 2000;1(03):170–184