



Case–Parent Trio Studies in Cleft Lip and Palate

Mahamad Irfanulla Khan¹ Prashanth C.S.²

¹ Department of Orthodontics & Dentofacial Orthopedics, The Oxford Dental College, Bangalore, Karnataka, India

² Department of Orthodontics & Dentofacial Orthopedics, DAPM RV Dental College, Bangalore, Karnataka, India

Address for correspondence Mahamad Irfanulla Khan, BDS, MDS, Department of Orthodontics & Dentofacial Orthopedics, The Oxford Dental College, 10th Milestone, Bommanahalli, Hosur Road, Bangalore 560068, Karnataka, India (e-mail: drirfankhanmds@gmail.com).

Global Med Genet 2020;7:75–79.

Abstract

Cleft lip with or without cleft palate (CL/P) is one of the most common congenital malformations in humans involving various genetic and environmental risk factors. The prevalence of CL/P varies according to geographical location, ethnicity, race, gender, and socioeconomic status, affecting approximately 1 in 800 live births worldwide. Genetic studies aim to understand the mechanisms contributory to a phenotype by measuring the association between genetic variants and also between genetic variants and phenotype population. Genome-wide association studies are standard tools used to discover genetic loci related to a trait of interest. Genetic association studies are generally divided into two main design types: population-based studies and family-based studies. The epidemiological population-based studies comprise unrelated individuals that directly compare the frequency of genetic variants between (usually independent) cases and controls. The alternative to population-based studies (case–control designs) includes various family-based study designs that comprise related individuals. An example of such a study is a case–parent trio design study, which is commonly employed in genetics to identify the variants underlying complex human disease where transmission of alleles from parents to offspring is studied. This article describes the fundamentals of case–parent trio study, trio design and its significances, statistical methods, and limitations of the trio studies.

Keywords

- ▶ cleft lip and palate
- ▶ case–parent trio study
- ▶ trio design
- ▶ population-based studies
- ▶ family-based studies

Introduction

Cleft lip with or without cleft palate (CL/P) is one of the most common congenital birth defects with a complex etiology,¹ involving various genetic and environmental risk factors.^{2–4} The prevalence of cleft lip and palate ranges from 1 in 700 to 1,000 newborns worldwide. Its prevalence is lowest in Africans (1:2,500), average in Caucasians (1:1000), and the highest in East Asians (1:500).⁵ Advances in genetics and molecular biology have explored the genetic basis of development of these craniofacial defects.^{6–8} Genetic studies aim to understand the mechanisms contributory to a phenotype by measuring the association between genetic variants and also between genetic variants and phenotype population. Genome-wide association studies (GWASs) are standard

tools used to discover genetic loci related to a trait of interest.⁹ The underlying concept for GWASs is to perform a test of association for every single-nucleotide polymorphisms (SNPs) across the genome and then examine the regions showing the most statistical significance.¹⁰

Genetic association studies are generally divided into two main design types: population-based studies and family-based studies.¹¹ The population-based studies comprise unrelated individuals that directly compare the frequency of genetic variants between cases and controls are widely used for association studies.¹² The goal of these studies is to detect potential genetic loci with a different frequency between cases and controls, which can correspond to conferring disease risk. Case–control designs are increasingly

published online
December 2, 2020

DOI <https://doi.org/10.1055/s-0040-1722097>.
ISSN 2699-9404.

© 2020. The Author(s).

This is an open access article published by Thieme under the terms of the Creative Commons Attribution License, permitting unrestricted use, distribution, and reproduction so long as the original work is properly cited. (<https://creativecommons.org/licenses/by/4.0/>)
Georg Thieme Verlag KG, Rüdigerstraße 14, 70469 Stuttgart, Germany

being employed for GWASs¹³ because of the convenience in the recruitment of samples and also the reducing cost of genotyping large numbers of individuals. However, the ensuing analyses are vulnerable to false correlation arising from population stratification.¹⁴

The alternative to population-based studies (case-control designs) includes various family-based study designs that comprise related individuals.¹⁵⁻¹⁸ An example of such a study is case-parent trio design study, where transmission of alleles from parents to offspring is studied.¹⁹⁻²² It is also known as the “case-parental control” or the “triad” design or the “trio design” study.^{23,24}

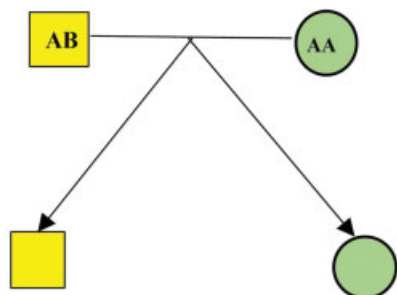
Trio Design

The model of Mendelian inheritance offers a straightforward rationalization of the genetic design of a trait. It prescribes that one gene locus produces the trait in either recessive or dominant pattern in families. However, many traits do not follow such a straightforward model of genetic architecture. Based on Mendelian inheritance principles, every parental allele has a 50% probability of being transmitted.^{25,26} The basic trio design is shown in ►Fig. 1.

Under the null hypothesis of no association between the disease and the marker, every parent transmits one of their two alleles to each offspring at random with a probability of 50/50 and independently of the other parent and any other offspring. For the example in ►Fig. 1, the mother can only transmit the A allele. However, the father can transmit either A or B with a probability of 50/50. This holds whenever there is no selection of the offspring related to the marker in question. Thus, when the parent’s genotypes are known, one can easily calculate the distribution of the offspring genotypes under the null hypothesis.²⁷

Case-Parent Trio Design

Case-parent trio studies are commonly employed in genetics to identify the variants underlying complex human disease. It involves the diseased/affected child and their parents (father and mother). In these studies, the affected children are selected from a population and then the affected children and their parents are genotyped.²⁸ Therefore, it does not



$$p(AA) = 0.5 (50\%) \quad p(AB) = 0.5 (50\%)$$

Fig. 1 Trio design.

require control sample data necessarily because the non-transmitted parental alleles or genotypes are used as “controls” for the transmitted alleles or genotypes.²⁹

Case-parent trio designs study the effects of a gene marker and gene-environment (GxE) interaction.³⁰ They are helpful to study the transmission of genetic variants between parents and offspring and how genetic variants differ between the affected individual(s) and the unaffected individuals within a family.^{31,32} Trio design studies are popular and an alternate to population-based case-control studies where unrelated individuals are being used for the detection of variants underlying common complex disease risk. Case-parent trio study designs also guard against population stratification and therefore the resulting type I error inflation, which is commonly observed in population-based studies. This technique is most robust to population admixture, and the targeted sequencing of trios is powerful to identify genetic variants that alter the function of the gene.^{33,34}

The family-based association studies were initially proposed by Falk and Rubinstein to avoid false-positive association test results.³⁵ They collected the parental genotypes of every case used the nontransmitted parental alleles as a control sample because the cases and controls are matched in genetic ancestry and are therefore robust to population stratification.³⁶ Later these tests were developed by other authors Ott (1989), and Terwilliger and Ott, (1992). Furthermore, Spielman et al proposed “transmission disequilibrium test” (TDT) to identify preferential transmission of alleles from parent to the affected child.³⁷⁻⁴⁰

In most of the genetic association studies, investigators compare an allele or genotype frequencies in unrelated case and control subjects or examine preferential allele transmissions from parents to affected offspring. It is important to contemplate parent of origin effects⁴¹ while studying congenital birth defects such as CL/P because maternal genotype controls the in utero environment of the developing fetus and separates maternal genotypic effects from imprinting effects.^{42,43} The functional activity of some genes or chromosomal regions depends on whether they are transmitted maternally or paternally, and this epigenetic phenomenon is termed as *genomic imprinting*.^{44,45} Another commonly used method in case-parent trio study is to use the non-transmitted genotypes of parents to affected offspring as control (also known as pseudo controls or complements).⁴⁶

GxE interactions have significant scientific and public health implications.⁴⁷⁻⁴⁹ In the absence of GxE interactions,⁵⁰ using the affected individual and their parents has been proved to be the most robust method to assess disease associations with candidate genes, also as an assessment of both linkage and allelic association with genetic markers.⁵¹ The aim of collecting the genetic data from family members aids in (1) enriching the genetic analysis, (2) increasing the power of study, (3) obtaining correct mutations, (4) addressing the priority regarding population structure bias, and methods of mixing genetic information from unrelated cases and controls.^{21,52}

This design has the most significant advantage of being robust to population structure bias as the estimation of gene transmission would be within the families, conditioning on parental genotypes, and it is an unbiased method as all the subjects are

from the same family.⁵³ Additionally, family data are always advantageous because certain models will test for maternally mediated and parent-of-origin effects that are significantly relevant when studying congenital birth defects in humans.⁵⁴

Case-Parent Trio Design Significances

Several genetic studies focused on numerous complex genetic and epigenetic effects associated with a nonsyndromic CL/P, suggesting that the mother transfers half of her genome to the offspring and provides the environment for the fetus. Variation within the mother's genome could affect the intrauterine environment to the development of the fetus. Parent-of-origin effects, where the effect of inherited DNA depends on whether it is transmitted from the mother or the father, may be difficult to study with a population-based case-control design. More complex genetic effects such as maternal genotype effects, maternal-fetal interactions, and parent-of-origin effects can be best studied using the case-parent trio design, where affected cases and their parents are genotyped.^{55,56}

Advantages of Case-Parent Trio Design Studies

The advantages of case-parent trio design studies are as follows^{15,17,20,21,54,57}:

- Robustness in sample collection and false conclusions because of population stratification and ethnic heterogeneity.
- Testing directly for maternal versus paternal effects.
- It permits the effects of fetal genotype versus parental origin in a very robust manner.
- Correct mutations are often obtained.
- It is unbiased as they share the same genetic ancestry.
- Simplex families (only the affected member) will be used effectively to check for linkage in the presence of disequilibrium.
- Family information will be helpful to check maternal genotype and parent-of-origin effects.
- It minimizes problems with confounding that plague traditional case-control designs as a result of the observed case is always compared with "controls" obtained from the same family.
- It is useful to check for GxE interaction under the conditional logistic or logistic regression framework.

The Statistical Methods for Case-Parent Trio Studies

Case-parent trio design studies employ a distinct statistical procedure to examine the linkage and association of a gene with the trait. When studying families, the transmission of alleles from the parent to the offspring is analyzed. In this sense, parents are used as genetic controls for their children.^{38,58-62} There are three main methods in which trios are analyzed, namely; the Transmission Disequilibrium Test (TDT), Conditional on parental genotype (CPG) approach, and combined likelihood method.⁶³⁻⁶⁷

- *Transmission Disequilibrium Test (TDT)*: it compares the offspring to its antiself, and the unobserved instance of an offspring with each nontransmitted allele.

- *Conditional on parental genotype (CPG)*: it compares the proband to unobserved pseudosiblings with all possible transmission patterns. Again, these pseudosiblings are not determined; however, the results of conditioning on the parental genotype are used to make a matched analysis.
- *Combined likelihood approach*: this method collectively models the likelihood of parental and case genotypes.

The most common statistical procedure used in case-parent trio design study is the TDT introduced by Spielman et al. It is a robust test for the linkage and disequilibrium in a variety of complex diseases that are associated with genetic etiology. It is more sensitive than haplotype sharing tests and requires only simplex families.⁶⁸

The CPG approach developed by Schaid and Sommer models the probability of an affected child's genotype CPG as a function of the genotype relative risks (GRRs) of the child.^{69,70} This CPG likelihood approach permits versatile modelling of the GRRs, which may be quantifiable using standard maximum-likelihood procedures. GRR is also helpful in estimating the magnitude of the gene-disease association in case-parent trio studies.^{71,72}

There are various commercially available software suites for case-parent trio study designs such as Golden Helix (<http://www.goldenhelix.com>) and freely accessible software system PLINK.^{73,74} PLINK is arguably the most commonly used software and a very powerful environment to carry out genetic association studies. It includes an integrated module to carry out the allelic TDT introduced by Spielman et al to assess the marginal SNP effects on the phenotype in case-parent trio studies.

Unlike the case-control approach, family-based methods are not subject to inflation of results because of population substructure, as they examine the transmission between parents and offspring and remove any potential impact caused by population allele frequency variations. However, family-based methods have less statistical power than the population-based case-control designs for a similar number of individual studied.⁷⁵

Disadvantages of Case-Parent Trio Design Studies

The disadvantages of case-parent trio design studies are as follows:^{20,48,52,76-79}

- Not all case-parent trios are informative (only heterozygous parents give information), some are intrinsically uninformative about allele transmission.
- They provide a robust assessment of gene effects; however, they do not impart complete information on GxE interaction.
- Not all of the parental genotypes (one or both) are available for the study because of death, separated parents (divorced), or false paternity.
- Some families/parents may refuse to participate in clinical research.
- The cost of genotyping is expensive for the case-parent trios (three persons) than for the case-controls (two

persons) without a corresponding linear increase in statistical power.

- Difficulty in recruiting large samples and time-consuming.
- Discarding those families with missing one or both parental genotypes will cause statistical power loss.
- If there is no deviation from multilocus Hardy-Weinberg equilibrium, the case-parent trio design will have no power to discover even tight linkage.

Conclusion

Case-parent trio studies are commonly used in genetics to identify the variants underlying complex human disease. They are useful to study the transmission of genetic variants between parents and offspring and how genetic variants differ between the affected individual(s) and the unaffected individuals within a family. This design has the most significant advantage of being robust to population structure bias and can test for more complex genetic effects such as maternal genotype effects, maternal-fetal interactions, and parent-of-origin effects that are significantly relevant when studying congenital birth defects.

In the absence of GxE interactions, using cases and their parents has proved to be a powerful test to assess disease associations with candidate genes. Case-parent trio study designs are adequate to estimate the genetic effects, and therefore the aim of collecting genetic information from family members enrich the genetic analysis, increase the power of study, help in obtaining correct mutations, and address the priority regarding population structure bias and methods of combining genetic information from unrelated cases and controls.

Conflict of Interest

None declared.

References

- 1 Schutte BC, Murray JC. The many faces and factors of orofacial clefts. *Hum Mol Genet* 1999;8(10):1853-1859
- 2 Bender PL. Genetics of cleft lip and palate. *J Pediatr Nurs* 2000;15(04):242-249
- 3 Spritz RA. The genetics and epigenetics of orofacial clefts. *Curr Opin Pediatr* 2001;13(06):556-560
- 4 Murray JC. Gene/environment causes of cleft lip and/or palate. *Clin Genet* 2002;61(04):248-256
- 5 Wong FK, Hagg U. An update on the aetiology of orofacial clefts. *Hong Kong Med J* 2004;10(05):331-336
- 6 Dixon MJ, Marazita ML, Beaty TH, Murray JC. Cleft lip and palate: understanding genetic and environmental influences. *Nat Rev Genet* 2011;12(03):167-178
- 7 Kohli SS, Kohli VS. A comprehensive review of the genetic basis of cleft lip and palate. *J Oral Maxillofac Pathol* 2012;16(01):64-72
- 8 Funato N, Nakamura M. Identification of shared and unique gene families associated with oral clefts. *Int J Oral Sci* 2017;9(02):104-109
- 9 Grant SF, Wang K, Zhang H, et al. A genome-wide association study identifies a locus for nonsyndromic cleft lip with or without cleft palate on 8q24. *J Pediatr* 2009;155(06):909-913
- 10 Howie BN, Donnelly P, Marchini J. A flexible and accurate genotype imputation method for the next generation of genome-wide association studies. *PLoS Genet* 2009;5(06):e1000529
- 11 Shi M, Mostowska A, Jugessur A, et al. Identification of microdeletions in candidate genes for cleft lip and/or palate. *Birth Defects Res A Clin Mol Teratol* 2009;85(01):42-51
- 12 Beaty TH, Murray JC, Marazita ML, et al. A genome-wide association study of cleft lip with and without cleft palate identifies risk variants near MAFB and ABCA4. *Nat Genet* 2010;42(06):525-529
- 13 Dickson SP, Wang K, Krantz I, Hakonarson H, Goldstein DB. Rare variants create synthetic genome-wide associations. *PLoS Biol* 2010;8(01):e1000294
- 14 Laurie CC, Doheny KF, Mirel DB, et al. Quality control and quality assurance in genotypic data for genomewide association studies. *Genet Epidemiol* 2010;34:591-602
- 15 Khoury MJ. Case-parental control method in the search for disease-susceptibility genes. *Am J Hum Genet* 1994;55(02):414-415
- 16 Risch N, Merikangas K. The future of genetic studies of complex human diseases. *Science* 1996;273(5281):1516-1517
- 17 Wilcox AJ, Weinberg CR, Lie RT. Distinguishing the effects of maternal and offspring genes through studies of "case-parent triads." *Am J Epidemiol* 1998;148(09):893-901
- 18 Weinberg CR. Methods for detection of parent-of-origin effects in genetic studies of case-parents triads. *Am J Hum Genet* 1999;65(01):229-235
- 19 Umbach DM, Weinberg CR. The use of case-parent triads to study joint effects of genotype and exposure. *Am J Hum Genet* 2000;66(01):251-261
- 20 Beaty TH, Hetmanski JB, Zeiger JS, et al. Testing candidate genes for non-syndromic oral clefts using a case-parent trio design. *Genet Epidemiol* 2002;22(01):1-11
- 21 Sull JW, Liang KY, Hetmanski JB, et al. Maternal transmission effects of the PAX genes among cleft case-parent trios from four populations. *Eur J Hum Genet* 2009;17(06):831-839
- 22 Epstein MP, Veal CD, Trembath RC, Barker JN, Li C, Satten GA. Genetic association analysis using data from triads and unrelated subjects. *Am J Hum Genet* 2005;76(04):592-608
- 23 Beaty TH, Taub MA, Scott AF, et al. Confirming genes influencing risk to cleft lip with/without cleft palate in a case-parent trio study. *Hum Genet* 2013;132(07):771-781
- 24 Li YM, Xiang Y. Detecting disease association with rare variants in case-parents studies. *J Hum Genet* 2017;62(05):549-552
- 25 Bateson W. *Mendel's Principles of Heredity*. Cambridge: Cambridge University Press; 1909
- 26 Laird NM, Lange C. Family-based methods for linkage and association analysis. *Adv Genet* 2008;60:219-252
- 27 Laird NM, Lange C. The role of family-based designs in genome-wide association studies. *Stat Sci* 2009;24:388-397
- 28 Sull JW, Liang KY, Hetmanski JB, et al. Differential parental transmission of markers in RUNX2 among cleft case-parent trios from four populations. *Genet Epidemiol* 2008;32(06):505-512
- 29 Schwender H, Li Q, Neumann C, et al. Detecting disease variants in case-parent trio studies using the bioconductor software package trio. *Genet Epidemiol* 2014;38(06):516-522
- 30 Zhu H, Kartiko S, Finnell RH. Importance of gene-environment interactions in the etiology of selected birth defects. *Clin Genet* 2009;75(05):409-423
- 31 Cordell HJ. Estimation and testing of gene-environment interactions in family-based association studies. *Genomics* 2009a93(01):5-9
- 32 Cordell HJ. Detecting gene-gene interactions that underlie human diseases. *Nat Rev Genet* 2009b10(06):392-404
- 33 Chen YH, Lin HW. Simple association analysis combining data from trios/sibships and unrelated controls. *Genet Epidemiol* 2008;32(06):520-527
- 34 Laird NM, Horvath S, Xu X. Implementing a unified approach to family-based tests of association. *Genet Epidemiol* 2000;19(Suppl 1):S36-S42
- 35 Zhao H. Family-based association studies. *Stat Methods Med Res* 2000;9(06):563-587

- 36 Hartl DL. A Primer of Population Genetics. 2nd ed. Sunderland, MA: Sinauer Associates; 1988
- 37 Schneider K, Laird N, Corcoran C. Exact family-based association tests for biallelic data. *Genet Epidemiol* 2005;29(03):185–194
- 38 Spielman RS, Ewens WJ. The TDT and other family-based tests for linkage disequilibrium and association. *Am J Hum Genet* 1996;59(05):983–989
- 39 Clayton D. A generalization of the transmission/disequilibrium test for uncertain-haplotype transmission. *Am J Hum Genet* 1999;65(04):1170–1177
- 40 Weinberg CR, Umbach DM. A hybrid design for studying genetic influences on risk of diseases with onset early in life. *Am J Hum Genet* 2005;77(04):627–636
- 41 Infante-Rivard C, Weinberg CR. Parent-of-origin transmission of thrombophilic alleles to intrauterine growth-restricted newborns and transmission-ratio distortion in unaffected newborns. *Am J Epidemiol* 2005;162(09):891–897
- 42 Weinberg CR, Wilcox AJ, Lie RT. A log-linear approach to case-parent-triad data: assessing effects of disease genes that act either directly or through maternal effects and that may be subject to parental imprinting. *Am J Hum Genet* 1998;62(04):969–978
- 43 Reik W, Walter J. Genomic imprinting: parental influence on the genome. *Nat Rev Genet* 2001;2(01):21–32
- 44 Wilkins JF, Haig D. What good is genomic imprinting: the function of parent-specific gene expression. *Nat Rev Genet* 2003;4(05):359–368
- 45 Ferguson-Smith AC. Genomic imprinting: the emergence of an epigenetic paradigm. *Nat Rev Genet* 2011;12(08):565–575
- 46 Hsieh HJ, Palmer CG, Harney S, et al. The v-MFG test: investigating maternal, offspring and maternal-fetal genetic incompatibility effects on disease and viability. *Genet Epidemiol* 2006;30(04):333–347
- 47 Schaid DJ. Case-parents design for gene-environment interaction. *Genet Epidemiol* 1999;16(03):261–273
- 48 Jugessur A, Lie RT, Wilcox AJ, et al. Cleft palate, transforming growth factor alpha gene variants, and maternal exposures: assessing gene-environment interactions in case-parent triads. *Genet Epidemiol* 2003;25(04):367–374
- 49 Gauderman WJ, Thomas DC, Murcray CE, Conti D, Li D, Lewinger JP. Efficient genome-wide association testing of gene-environment interaction in case-parent trios. *Am J Epidemiol* 2010;172(01):116–122
- 50 Beaty TH, Ruczinski I, Murray JC, et al. Evidence for gene-environment interaction in a genome wide study of nonsyndromic cleft palate. *Genet Epidemiol* 2011;35(06):469–478
- 51 Taub MA, Schwender H, Beaty TH, Louis TA, Ruczinski I. Incorporating genotype uncertainties into the genotypic TDT for main effects and gene-environment interactions. *Genet Epidemiol* 2012;36(03):225–234
- 52 Gjessing HK, Lie RT. Case-parent triads: estimating single- and double-dose effects of fetal and maternal disease gene haplotypes. *Ann Hum Genet* 2006;70(Pt 3):382–396
- 53 Santos JL, Pérez F, Carrasco E, Albala C. Use of case-parents trio for epidemiological studies of association between genetic polymorphisms and complex diseases [Spanish]. *Rev Med Chil* 2002;130(11):1307–1315
- 54 Infante-Rivard C, Mirea L, Bull SB. Combining case-control and case-trio data from the same population in genetic association analyses: overview of approaches and illustration with a candidate gene study. *Am J Epidemiol* 2009;170(05):657–664
- 55 Ainsworth HF, Unwin J, Jamison DL, Cordell HJ. Investigation of maternal effects, maternal-fetal interactions and parent-of-origin effects (imprinting), using mothers and their offspring. *Genet Epidemiol* 2011;35(01):19–45
- 56 Shi M, Murray JC, Marazita ML, et al. Genome wide study of maternal and parent-of-origin effects on the etiology of orofacial clefts. *Am J Med Genet A* 2012;158A(04):784–794
- 57 Maestri NE, Beaty TH, Hetmanski J, et al. Application of transmission disequilibrium tests to nonsyndromic oral clefts: including candidate genes and environmental exposures in the models. *Am J Med Genet* 1997;73(03):337–344
- 58 Ewens WJ, Spielman RS. The transmission/disequilibrium test: history, subdivision, and admixture. *Am J Hum Genet* 1995;57(02):455–464
- 59 Thomas DC. *Statistical Methods in Genetic Epidemiology*. New York, NY: Oxford University Press; 2004
- 60 Rice JP, Neuman RJ, Hoshaw SL, Daw EW, Gu C. TDT with covariates and genomic screens with mod scores: their behavior on simulated data. *Genet Epidemiol* 1995;12(06):659–664
- 61 Schaid DJ. Likelihoods and TDT for the case-parents design. *Genet Epidemiol* 1999;16(03):250–260
- 62 Balding DJ. A tutorial on statistical methods for population association studies. *Nat Rev Genet* 2006;7(10):781–791
- 63 Freidlin B, Zheng G, Li Z, Gastwirth JL. Trend tests for case-control studies of genetic markers: power, sample size and robustness. *Hum Hered* 2002;53(03):146–152
- 64 Cordell HJ. Epistasis: what it means, what it doesn't mean, and statistical methods to detect it in humans. *Hum Mol Genet* 2002;11(20):2463–2468
- 65 Li B, Leal SM. Methods for detecting associations with rare variants for common diseases: application to analysis of sequence data. *Am J Hum Genet* 2008;83(03):311–321
- 66 Ott J, Kamatani Y, Lathrop M. Family-based designs for genome-wide association studies. *Nat Rev Genet* 2011;12(07):465–474
- 67 Ionita-Laza I, Lee S, Makarov V, Buxbaum JD, Lin X. Family-based association tests for sequence data, and comparisons with population-based association tests. *Eur J Hum Genet* 2013;21(10):1158–1162
- 68 Spielman RS, McGinnis RE, Ewens WJ. Transmission test for linkage disequilibrium: the insulin gene region and insulin-dependent diabetes mellitus (IDDM). *Am J Hum Genet* 1993;52(03):506–516
- 69 Schaid DJ, Sommer SS. Genotype relative risks: methods for design and analysis of candidate-gene association studies. *Am J Hum Genet* 1993;53(05):1114–1126
- 70 Schaid DJ, Sommer SS. Comparison of statistics for candidate-gene association studies using cases and parents. *Am J Hum Genet* 1994;55(02):402–409
- 71 Schaid DJ. General score tests for associations of genetic markers with disease using cases and their parents. *Genet Epidemiol* 1996;13(05):423–449
- 72 Eaves LJ, Sullivan P. Genotype-environment interaction in transmission disequilibrium tests. *Adv Genet* 2001;42:223–240
- 73 Purcell S, Cherny SS, Sham PC. Genetic Power Calculator: design of linkage and association genetic mapping studies of complex traits. *Bioinformatics* 2003;19(01):149–150
- 74 Purcell S, Neale B, Todd-Brown K, et al. PLINK: a tool set for whole-genome association and population-based linkage analyses. *Am J Hum Genet* 2007;81(03):559–575
- 75 Schwender H, Bowers K, Fallin MD, Ruczinski I. Importance measures for epistatic interactions in case-parent trios. *Ann Hum Genet* 2011;75(01):122–132
- 76 Epstein MP, Waldman ID, Satten GA. Improved association analyses of disease subtypes in case-parent triads. *Genet Epidemiol* 2006;30(03):209–219
- 77 Weinberg CR. Methods for detection of parent-of-origin effects in genetic studies of case-parents triads. *Am J Hum Genet* 1999;65(01):229–235
- 78 Zhou JY, Hu YQ, Fung WK. A simple method for detection of imprinting effects based on case-parents trios. *Heredity* 2007;98(02):85–91
- 79 Wang S, Yu Z, Miller RL, Tang D, Perera FP. Methods for detecting interactions between imprinted genes and environmental exposures using birth cohort designs with mother-offspring pairs. *Hum Hered* 2011;71(03):196–208