

Structural, magnetic and electronic properties of the iron–chalcogenide $A_x\text{Fe}_{2-y}\text{Se}_2$ ($A=\text{K}, \text{Cs}, \text{Rb}, \text{and Tl}, \text{etc.}$) superconductors

Dai-xiang Mou, Lin Zhao, Xing-jiang Zhou[†]

National Laboratory for Superconductivity, Beijing National Laboratory for Condensed Matter Physics,
Institute of Physics, Chinese Academy of Sciences, Beijing 100190, China

E-mail: [†]XJZhou@aphy.iphy.ac.cn

Received November 18, 2011; accepted November 28, 2011

The latest discovery of a new iron–chalcogenide superconductor $A_x\text{Fe}_{2-y}\text{Se}_2$ ($A = \text{K}, \text{Cs}, \text{Rb}, \text{and Tl}, \text{etc.}$) has attracted much attention due to a number of its unique characteristics, such as the possible insulating state of the parent compound, the existence of Fe-vacancy and its ordering, a new form of magnetic structure and its interplay with superconductivity, and the peculiar electronic structures that are distinct from other Fe-based superconductors. In this paper, we present a brief review on the structural, magnetic and electronic properties of this new superconductor, with an emphasis on the electronic structure and superconducting gap. Issues and future perspectives are discussed at the end of the paper.

Keywords superconductor, iron–chalcogenides, electronic structure, photoemission, Fermi science, superconducting gap, crystal structure, magnetic structure

PACS numbers 71.18.+y, 71.20.-b, 74.25.-q, 74.25.Dw, 74.70.-b, 74.25.Jb, 74.70.Xa, 74.62.Bf, 74.25.Ha, 75.30.-m, 79.60.-i

Contents

1	Introduction	410
2	Structural and magnetic properties	411
2.1	Crystal structure and phase diagram	411
2.2	Iron vacancy order and phase separation	412
2.3	Magnetic structures	414
2.4	Spin dynamics	416
3	Electronic properties	417
3.1	Band structure calculations	417
3.2	Band structure and Fermi surface	418
3.3	Superconducting gap and pairing symmetry	422
3.4	Electron dynamics	424
4	Summary and perspective	425
	Acknowledgements	425
	References and notes	426

superconducting critical temperature up to ~ 56 K [2–5] ushered in a second class of “high temperature superconductors” after the discovery of the first class of high temperature superconductors in copper–oxide compounds (cuprates) in 1986 [6]. So far, four main families of Fe-based superconductors have been found, denoted as “1111”-type ReFeAsO ($\text{Re} = \text{rare earth}$) (FeAs1111) [1–5], “122”-type $B\text{Fe}_2\text{As}_2$ ($B = \text{Ba}, \text{Sr}, \text{or Ca}$) (FeAs122) [7], “111”-type $A\text{FeAs}$ ($A = \text{alkali metal}$) (FeAs111) [8], and “11”-type tetragonal $\alpha\text{-FeSe}(\text{Te})$ (FeCh11) [9]. It is instructive to compare and contrast the Fe-based superconductors to the copper–oxide superconductors in order to pinpoint some essential ingredients in realizing high temperature superconductivity [10–13]. There are similarities between the Fe-based superconductors and cuprate superconductors: (i) Structurally speaking, both the Fe-based compounds and cuprates have layered structures. The Fe-based compounds consist of a common FePn ($\text{Pn} = \text{As or Se}$) layers which are considered to be essential for the occurrence of superconductivity, similar to the CuO_2 planes in cuprates. (ii) Superconduc-

1 Introduction

The discovery of superconductivity in iron-based compounds in 2008 by Hosono and collaborators [1] with a

tivity in the Fe-based compounds is realized in a vicinity of antiferromagnetic state, a case that is similar to that in the cuprates. There are also some significant differences between the Fe-based and copper-based superconductors: (i) Usually the perfectness of CuO₂ plane is critical in sustaining superconductivity in cuprate superconductors. But the FeAs(Se) layers appear to be more tolerant to modifications of external perturbations. In fact, substitution of Fe by other ions like Co or Ni can even transform a non-superconductor into a superconductor [14, 15]. (ii) It is known that the parent compounds of cuprate superconductors are insulating Mott insulator [16], but most parent compounds of the Fe-based superconductors are bad metals. (iii) In the cuprate superconductors, the electronic structures are mainly dictated by a single Cu 3d_{x²-y²} band. But in the Fe-based compounds, all the five Fe 3d orbitals contribute to the formation of low-lying electronic states, thus forming a typical multi-band system.

The Fe-based superconductors discovered so far possess some common characteristics of electronic structure [17–20]. The low-lying electronic excitations are mainly dominated by five 3d orbitals which give rise to a couple of hole-like bands near the zone center Γ and electron-like bands near the zone corner M . Since the parent compound of the Fe-based superconductors is a bad metal, the electron correlation is believed to be not as strong as in cuprates. It remains under debate whether electrons in the Fe-based superconductors should be treated locally or itinerantly [10–13]. Moreover, while it is well-established that in the cuprate superconductors, the superconducting order parameter has predominantly d-wave symmetry, the pairing symmetry in the Fe-based superconductors remains unclear. It has been proposed that the interband scattering between the hole-like bands near Γ and the electron-like bands near M gives rise to electron pairing and superconductivity [18, 21–26]. On the other hand, another approach based on strong coupling suggested that the parent compound antiferromagnetism could be understood with frustrated Heisenberg model and the local spin coupling could give rise to superconductivity [27–31]. Both of these two approaches give an s[±] pairing symmetry (nodeless gap with sign change between hole and electron Fermi surface sheets). In addition, the orbital degree of freedom has also been proposed [32, 33] to play an important role in this multi-band system. Enhanced by electron–phonon coupling, orbital order is considered to be the driving force of antiferromagnetic transition and its fluctuation could lead to superconductivity with s⁺⁺ pairing symmetry (no gap sign change between two kinds of Fermi surface sheets). Although nodeless superconducting gap was revealed by Angle Resolved Photoemission Spectroscopy (ARPES) [34, 35] and gap sign change implied by some experimental techniques [36, 37], at this stage it remains to be

investigated which of these candidates provide the best description of the Fe-based compounds.

Very recently, a new superconductor $A_x\text{Fe}_{2-y}\text{Se}_2$ ($A = \text{K, Cs, Rb, and Tl, etc.}$) with T_c around 30 K was reported [38–42]. This new superconductor triggered a new wave of excitement in the superconductivity community because it exhibits a couple of unique characteristics [43]. First, while the parent compounds of other Fe-based superconductors are bad metal, it is suggested that the parent compound of this superconductor could be an insulator [41]. Second, while the Fe-sites in FeAs(Se) layers of other Fe-based superconductors are filled, there could be Fe vacancies in this new superconductors [41]. The superconductor may show unique magnetic structure with high magnetic transition temperature and large magnetic moment on the Fe site [44, 45]. Particularly, the electronic structure of the new superconductor is distinct from other Fe-based superconductors in that no hole-like Fermi surface around Γ is present [46–50]. These characteristics will provide new perspectives on understanding the Fe-based superconductors. On the other hand, many issues remain unclear at this moment that need further experimental and theoretical efforts [51].

In this paper, we will present a brief review on the current status of research on the $A_x\text{Fe}_{2-y}\text{Se}_2$ superconductors, with an emphasis on their unique electron structure. The paper is organized as follows: in Section 2, structural properties including Fe vacancy order and several proposed phase diagrams are first discussed. Then we summarize magnetic structures of several reported phases and their spin dynamics. In Section 3, electronic properties, including band structure and Fermi surface, gap structures and pairing symmetry are discussed. In Section 4, we provide a summary and discussion on the future issues.

2 Structural and magnetic properties

2.1 Crystal structure and phase diagram

The superconductivity with a T_c at ~ 30 K was first reported in a compound with a nominal chemical formula $\text{K}_x\text{Fe}_2\text{Se}_2$, which was considered to be isostructural to FeAs_{122} , as shown in Fig. 1 [38]. Later on Fang *et al.* [41] pointed out that Fe deficiency exists in $(\text{Tl}_{1-y}\text{K}_y)\text{Fe}_x\text{Se}_2$ compounds, as those discovered previously in the TlFe_xCh_2 ($\text{Ch} = \text{S, Se}$) compounds [52–54]. By tuning the Fe content x , different phases from an insulator to a superconductor can be obtained [Figs. 2(a) and (b)]. At low Fe content x , the compound is an antiferromagnetic insulator with a high Néel temperature. With increasing x , the antiferromagnetism is gradually suppressed and superconductivity emerges around $x = 1.7$ with only a small fraction of superconducting volume.

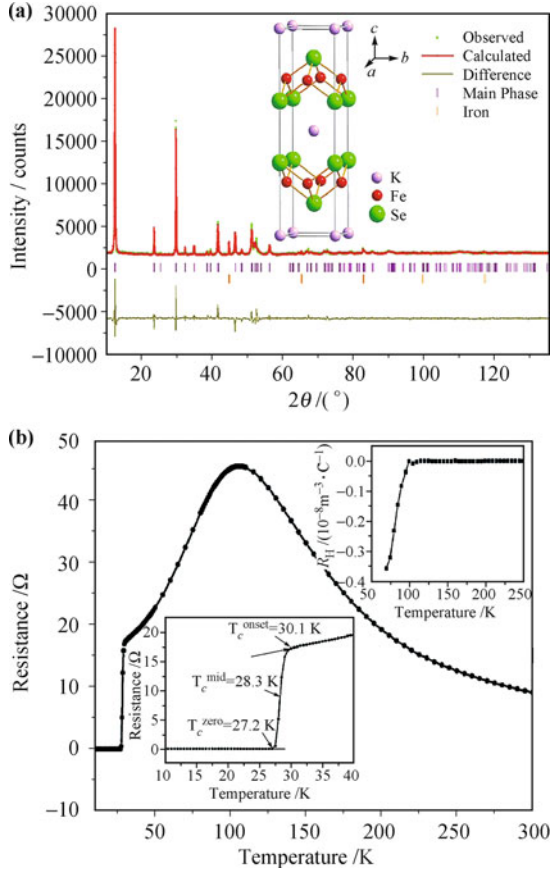


Fig. 1 (a) Crystal structure of $K_xFe_2Se_2$ and its powder X-ray diffraction pattern. (b) Temperature dependent resistance showing a superconducting transition at 30 K. Reproduced from Ref. [38], Copyright © 2010 American Physical Society.

Bulk superconductivity can be found when $x \geq 1.78$. Similar insulator-to-superconductor transition is also reported in $K_xFe_{2-y}Se_2$ by varying the potassium content, x [55]. A sign of possible T_c at 40 K was reported in the $A_xFe_{2-y}Se_2$ system ($A = K, (Tl, K)$) [41, 55] but it remains hard to isolate a pure superconducting phase. T_c of the $A_xFe_{2-y}Se_2$ ($A = K, (Tl, Rb)$) superconductor decreases from 31 K to zero with increasing pressure and then another phase with a T_c as high as 48 K was reported under higher pressure [56].

It is apparent that the physical properties of $A_xFe_{2-y}Se_2$ rely on both the content of A (x) and the content of Fe (y). It is therefore essential to have a precise determination of the sample composition in order to build a clear correspondence between the composition, structure and physical properties. A phase diagram was constructed in $Rb_xFe_{2-y}Se_2$ based on composition determination and corresponding magnetic, conductivity and specific heat measurements [57]. As shown in Fig. 2(c), superconductivity was discovered with an Fe content between 1.53 and 1.6, while insulating and semiconducting behaviors were observed with Fe contents at $2 - y < 1.5$ and $2 - y > 1.6$, respectively. Another phase diagram based on the Fe valence state (V_{Fe}) was proposed in $K_xFe_{2-y}Se_2$ [58] which is divided into three regions [Fig.

2(d)]. These regions show structural and AFM transitions at similar temperatures. But superconductivity appears only in region II with $1.935 < V_{Fe} < 2.00$ and T_c is nearly independent of V_{Fe} . AFM insulating behavior is found on both sides of the superconducting region II, but they show different Fe vacancy ordering. In region I with $V_{Fe} \geq 2.00$, Fe vacancy order with a $q_2 = (1/4, 3/4, 0)$ is observed while in region III with $V_{Fe} < 1.935$, the Fe vacancy order has a wave vector of $q_1 = (1/5, 3/5, 0)$. It has been found that all the samples with a chemical formula $K_{1-x}Fe_{1.5+x/2}Se_2$ are insulators; superconductivity can be obtained only by adding extra Fe content if keeping the potassium content x at 0.8. Therefore the stoichiometric $A_{0.8}Fe_{1.6}Se_2$ compound was proposed to be the parent compound of the $A_xFe_{2-y}Se_2$ superconductors which is an AFM insulator [41, 58].

It is worth noting that the $A_xFe_{2-y}Se_2$ compounds show peculiar resistivity-temperature dependence. As shown in Fig. 1(b), in addition to an abrupt superconducting transition at 31 K, the resistivity of $K_{0.8}Fe_2Se_2$ superconductor exhibits a broad hump around 140~150 K (T_H) where there appears to be an insulator-metal transition [38]. Such a hump is common in other $A_xFe_{2-y}Se_2$ superconductors [39–41]. It was found that the hump maximum temperature (T_H) depends sensitively on the type of A atom [59] and the Fe content [41, 55]. It shows little change with the applied magnetic field [60]. Pressure can gradually suppress the magnitude of the hump with a slight increase of T_H [60–63]. It changes non-monotonically with isovalent substitution of Se with sulfur in $K_xFe_{2-y}(Se_{2-z}S_z)$ [64]. When it is compared to the magnetic susceptibility, no corresponding anomaly is found at the temperature of the broad hump, suggesting it may not be a magnetic transition [65]. Moreover, structural analysis reveals no structural transition around T_H [44, 60, 66]. It is possible that such a resistivity hump is related to the phase separation, as will be discussed below.

2.2 Iron vacancy order and phase separation

As mentioned before, the stoichiometry of synthesized samples always deviate from the ideal AFe_2Se_2 due to the restriction of the Fe valence. Iron vacancy would form an ordered state in Fe-deficient $A_xFe_{2-y}Se_2$ as reported years ago [52–54]. Because of the discovery of superconductivity, many new experimental studies have been carried out recently which have revealed different types of iron ordering in $A_xFe_{2-y}Se_2$ by transmission electron microscope (TEM) [67–70], neutron scattering [44, 45, 66, 71–73], X-ray diffraction (XRD) [74, 75] and scanning tunneling microscopy (STM) [76, 77]. Up to now, five different phases were found (Fig. 3) which include vacancy free phase [Fig. 3(a)], $\sqrt{5} \times \sqrt{5}$ superstructure phase [Fig. 3(b)], 2×2 superstructure phase [Fig. 3(c)],

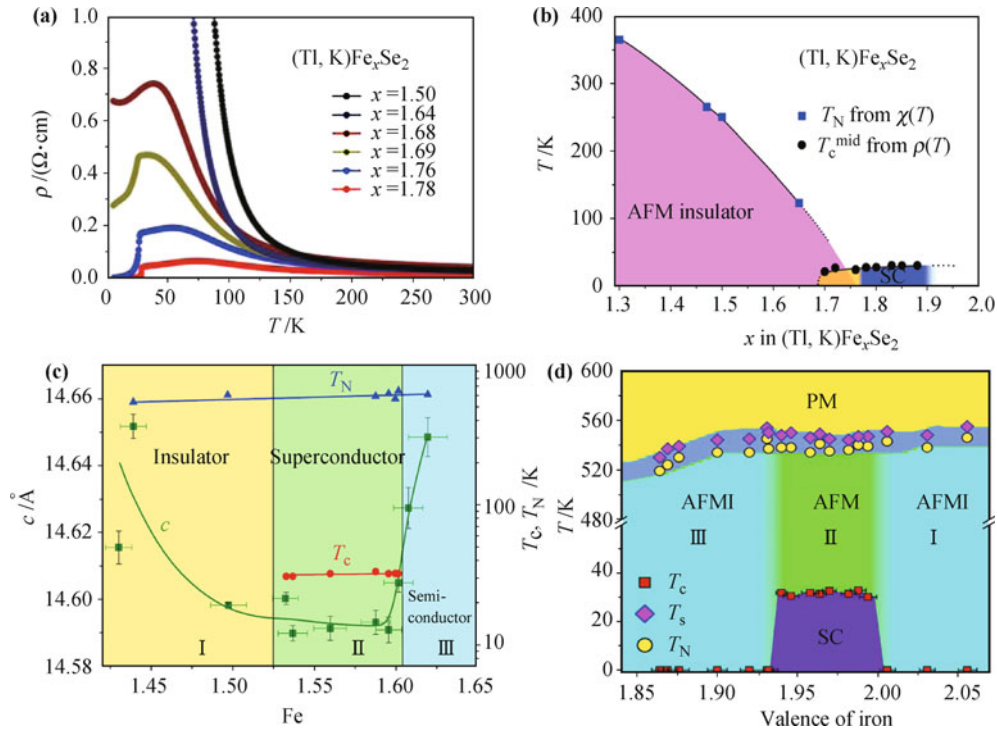


Fig. 2 (a) Temperature dependent ab plane resistivity of $(\text{Tl}_{1-y}\text{K}_y)\text{Fe}_x\text{Se}_2$ with various iron content x . (b) Phase diagram of $(\text{Tl}_{1-y}\text{K}_y)\text{Fe}_x\text{Se}_2$ based on resistivity measurements. (a), (b) are reproduced from Ref. [41], Copyright © 2011 Institute of Physics. Note that the Antiferromagnetic transition temperature determined by neutron scattering later on is in fact higher than the transition temperature marked in (b). (c) Phase diagram of $\text{Rb}_x\text{Fe}_{2-y}\text{Se}_2$ system that shows variation of the lattice constant c , superconducting transition temperature T_c and the Néel temperature T_N with Fe content. Reproduced from Ref. [57]. (d) Phase diagram of $\text{K}_x\text{Fe}_{2-y}\text{Se}_2$ that shows structure, magnetism and superconducting transitions as a function of Fe valence. Reproduced from Ref. [58].

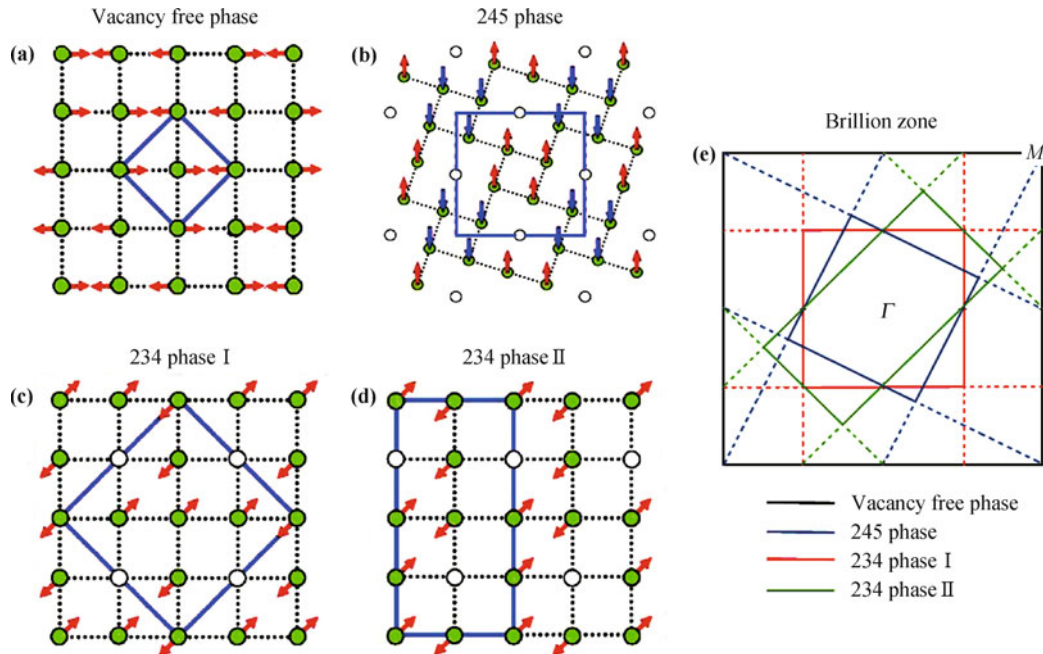


Fig. 3 Iron lattice and ground state magnetic structures of various vacancy-ordered phases. Blue lines mark corresponding unit cells. (a) Vacancy free phase with calculated bicolinear AFM magnetic structure [86]. (b) 245 Phase ($\sqrt{5} \times \sqrt{5}$ superstructure) with calculated block AFM magnetic structure [87–90]. It is revealed by Neutron scattering measurements [44, 45, 72, 73]. (c) 234 Phase I (2×2 superstructure) with calculated c -AFM magnetic structure [91]. (d) 234 Phase II ($\sqrt{2} \times 2\sqrt{2}$ superstructure) with A -collinear AFM magnetic structure [91]. (e) The corresponding Brillion Zones of these structures.

$\sqrt{2} \times 2\sqrt{2}$ superstructure phase [Fig. 3(d)] and $\sqrt{2} \times \sqrt{2}$ superstructure phase. From the iron ordering pattern, the Fe content of $\sqrt{5} \times \sqrt{5}$ superstructure phase corresponds to 1.6 and its stoichiometry can be written as $K_{0.8}Fe_{1.6}Se_2$ or $K_2Fe_4Se_5$ (245 phase) if undoped. Similarly, both stoichiometries of 2×2 and $\sqrt{2} \times 2\sqrt{2}$ superstructure phases can be written as $K_2Fe_3Se_4$ (234 phase I and 234 phase II respectively). Table 1 summarizes observed superstructures in different $A_xFe_{2-y}Se_2$ samples. The vacancy free phase has been observed only in superconducting samples while the $\sqrt{2} \times 2\sqrt{2}$ superstructure is observed only in insulators. The other three superstructures were observed both in superconducting and insulating samples. Compared with other phases that are related to iron vacancy, the origin of the $\sqrt{2} \times \sqrt{2}$ superstructure has not reached a consensus. It was observed by TEM [68], XRD [73] and neutron scattering [45], suggesting it is related to the lattice. But the STM results suggest it may have a magnetic origin [76, 77].

Table 1 Superstructure phases reported in $A_xFe_{2-y}Se_2$.

Superstructure	SC/Insulator	Sample	Ref.
$\sqrt{5} \times \sqrt{5}$	SC	$K_xFe_{2-y}Se_2$	[67, 66, 44, 74, 68]
		$Rb_yFe_{1.6}Se_2$	[45]
		$Cs_xFe_{2-y}Se_2$	[73]
	Insulator	$K_xFe_{2-y}Se_2$	[67, 75, 66, 76, 58]
		$Rb_yFe_{1.6}Se_2$	[45]
$K_x(Fe, Co)_{2-y}Se_2$		[70]	
2×2	SC	$K_xFe_{2-y}Se_2$	[67]
	Insulator	$K_xFe_{2-y}Se_2$	[67, 58]
$\sqrt{2} \times 2\sqrt{2}$	Insulator	$K_x(Fe, Co)_{2-y}Se_2$	[70]
$\sqrt{2} \times \sqrt{2}$	SC	$K_xFe_{2-y}Se_2$	[77, 68]
		$Rb_yFe_{1.6}Se_2$	[45]
		$Cs_xFe_{2-y}Se_2$	[73]
	Insulator	$K_xFe_{2-y}Se_2$	[66, 58]
		$K_x(Fe, Co)_{2-y}Se_2$	[70]
Vacancy free	SC	$K_xFe_{2-y}Se_2$	[67, 76]

Temperature dependent neutron scattering studies on $K_xFe_{2-x/2}Se_2$ compounds with various iron content were reported by Bao *et al.* and a phase diagram was proposed as shown in Fig. 4 [66]. At high temperature, all samples show tetragonal $ThCr_2Si_2$ structure with $I4/mmm$ group symmetry and both K and Fe sites are partially occupied in random. As temperature goes down, for insulator compounds with low iron content, two vacancy ordered state with $I4/m(\sqrt{5} \times \sqrt{5}$ superstructure) and $Pmna(\sqrt{2} \times 2\sqrt{2}$ superstructure) group symmetry appear and coexist with $I4/mmm$ phase between 295 K and 500 K. Only $\sqrt{5} \times \sqrt{5}$ superstructure phase exists when temperature is further lowered below 295 K. For superconductors with higher iron content, vacancy ordered state with $I4/m$ group symmetry develops after the structure transition at 500 K and is maintained at the lowest temperature even below T_c , indicating the superconductivity may coexist with the $\sqrt{5} \times \sqrt{5}$ superstructure.

So far it is hard to prepare single phase $A_xFe_{2-y}Se_2$

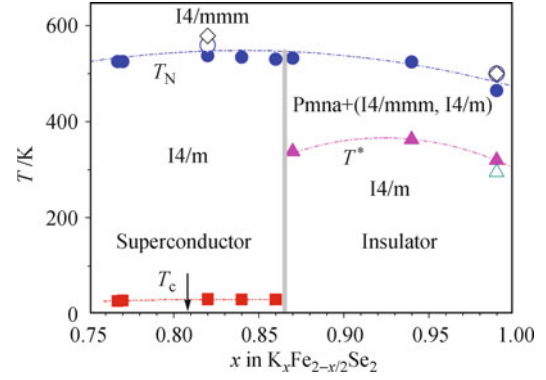


Fig. 4 Phase diagram of $K_xFe_{2-x/2}Se_2$ based on crystal structures measured by temperature dependent Neutron scattering. $I4/mmm$: vacancy free [Fig. 5(a)], $I4/m$: $\sqrt{5} \times \sqrt{5}$ superstructure [Fig. 3(b)], $Pmna$: $\sqrt{2} \times 2\sqrt{2}$ superstructure. Reproduced from Ref. [66].

samples, especially superconducting ones. For superconducting samples, it is common to observe two sets of c lattice constants, even for single crystal samples [45, 65, 78]. The coexistence of multiple phases has been observed in TEM [67, 70] and STM [76, 77] results (see Fig. 5). While phase separation is possible along the a - b plane, it is interesting to see that, in the superconducting samples, TEM revealed that the Fe-vacancy disorder state (DOS) and order state (OS) alternate along the c -axis direction [see Fig. 5(a)]. The temperature evolution of the phase separation was also investigated by XRD studies on a $K_{0.8}Fe_{1.6}Se_2$ superconductor [79]. At a high temperature above 600 K, no superstructure was found and it is a vacancy-disordered tetragonal phase. After formation of $\sqrt{5} \times \sqrt{5}$ superlattice at 580 K, the (220) peak splits and another set of superstructure spots appears at 520 K, which can be assigned to $\sqrt{2} \times \sqrt{2}$ superlattice. Using nanofocused XRD on different parts of the sample, the proportion of these two phases is found to vary from one part to another [80]. It remains to see whether a pure $A_xFe_{2-y}Se_2$ superconducting sample can be prepared or the phase separation is an intrinsic process for superconducting samples.

2.3 Magnetic structures

It has been well-established that the parent compounds of $FeAs1111$, $FeAs122$ and $FeAs111$ have collinear magnetic structure while the $FeCh11$ phase ($FeTe$) has a bi-collinear magnetic structure [81–85]. For the $A_xFe_{2-y}Se_2$ compound, the magnetic structures with different iron vacancy ordering are predicted from the theoretical calculations, as summarized in Fig. 3. For the hypothetical stoichiometric AFe_2Se_2 compound [86], the ground state shows a bi-collinear antiferromagnetic order, with the Fe moments having collinear antiferromagnetic order in each bipartite sublattice [Fig. 3(a)]. It results from Se 4p orbitals mediated super-exchange interactions of Fe moments, similar to the $FeCh11$ compound [84]. For the

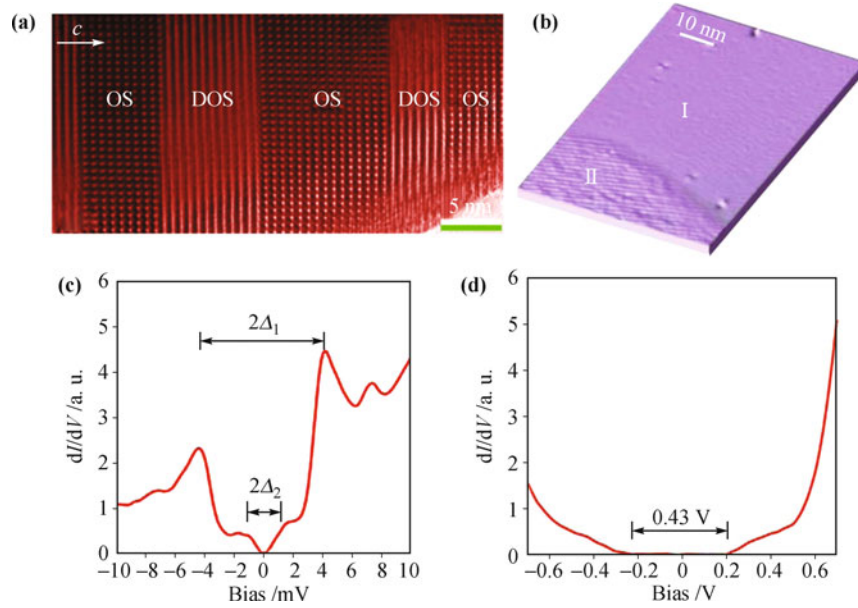


Fig. 5 (a) TEM results of $K_x\text{Fe}_{2-y}\text{Se}_2$ along the $[1-32]$ zone-axis direction. Ordered state (OS) and disordered state (DOS) are separated along the c -axis. Reproduced from Ref. [67], Copyright © 2011 American Physical Society. (b) STM topographic image of $K_x\text{Fe}_{2-y}\text{Se}_2$ film. Two distinct regions are labeled by I (vacancy free) and II ($\sqrt{5} \times \sqrt{5}$ superstructure). (c) Differential conductance spectrum in region I measured at 0.4 K. (d) Differential conductance spectrum in region II. (b)–(d) are reproduced from Ref. [76].

245 phase with the $\sqrt{5} \times \sqrt{5}$ superstructure [87–90], the ground magnetic state favors block AFM structure with all the magnetic moment parallel to c axis and four nearest iron atoms forming a cluster [Fig. 3(b)]. It is ferromagnetic (FM) within one cluster and antiferromagnetic between the adjacent clusters. Two different magnetic structures were predicted in the compound with the same 234 stoichiometry. For the square ordered 234 phase I [91], the magnetic structure is c -AFM order in which the next-nearest Fe moments are ordered in antiparallel if one just ignores the iron vacancy [Fig. 3(c)]. For the rhombus ordered 234 phase II [91], it has an A-collinear AFM order magnetic structure where the Fe moments are antiferromagnetically ordered along the line without vacancies [Fig. 3(d)].

Block AFM structure of the 245 phase with the $\sqrt{5} \times \sqrt{5}$ superstructure was established from neutron diffraction on both polycrystalline samples [44, 72, 73] and single crystal samples [45, 71]. However, no experimental results on magnetic structure of other ordered states are available yet. Figure 6 shows the development of the block AFM structure of the 245 phase in various $A_x\text{Fe}_{2-y}\text{Se}_2$ ($A = \text{K}, \text{Rb}, \text{Cs}, (\text{Ti}, \text{K}), (\text{Ti}, \text{Rb})$) samples [71]. The antiferromagnetic Néel temperature (T_N), structural transition temperature (T_S) and magnetic moment of different $A_x\text{Fe}_{2-y}\text{Se}_2$ samples measured by different experimental techniques are summarized in Table 2. Because the establishment of the block AFM is based on the formation of the $\sqrt{5} \times \sqrt{5}$ superstructure, T_N is always slightly lower than T_S , except for a $K_x\text{Fe}_{2-y}\text{Se}_2$ insulator where the two transitions occur at nearly the same temperature [66]. The $A_x\text{Fe}_{2-y}\text{Se}_2$ com-

pounds have a rather high Néel temperature (above 500 K), and large magnetic moment (up to $3\mu_B/\text{Fe}$) which is the largest among all Fe-based compounds.

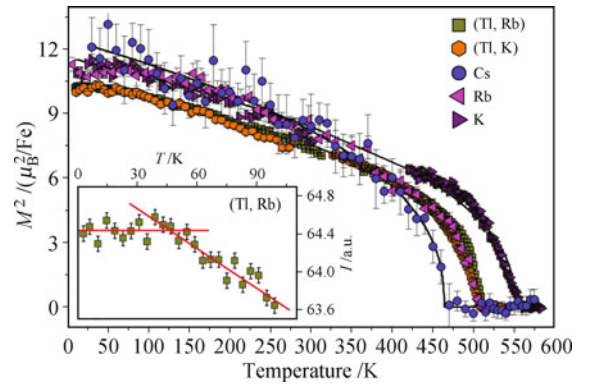


Fig. 6 Normalized magnetic Bragg intensity that shows the squared magnetic moment in block AFM as a function of temperature. Inset: Magnetic (101) peak of $(\text{Ti}, \text{Rb})_2\text{Fe}_4\text{Se}_5$ showing a transition around T_c . Reproduced from Ref. [71], Copyright © 2011 American Physical Society.

As mentioned above, due to the existence of multiple phases in $A_x\text{Fe}_{2-y}\text{Se}_2$ samples, it remains unclear which phase is really superconducting. A related issue is whether antiferromagnetism and superconductivity can coexist in the system. On the one hand, coexistence of superconductivity and magnetism in $A_x\text{Fe}_{2-y}\text{Se}_2$ was proposed from results of neutron scattering [44, 45, 71–73], transport measurements [57–59], μSR [92], Mössbauer [93] and Raman scattering [94]. As shown in the inset of Fig. 6, the magnetic Bragg intensity from the $\sqrt{5} \times \sqrt{5}$ superstructure shows a kink around T_c , indicating that the antiferromagnetism and superconductivity are coupled

Table 2 Structural transition temperature (T_S), magnetic transition temperature (T_N) and the ordered magnetic moment of Fe at low temperature (M) and room temperature (m) reported in $A_x\text{Fe}_{2-y}\text{Se}_2$.

Sample	T_c/K	T_S/K	T_N/K	M/μ_B	m/μ_B	Ref.
$\text{K}_{0.8}\text{Fe}_{1.6}\text{Se}_2$	32	578	559	3.31	2.76	[44]
$\text{K}_{0.85}\text{Fe}_{1.83}\text{Se}_{2.09}$	30		532	4.7	3.0	[93]
$\text{K}_y\text{Fe}_{2-x}\text{Se}_2$	29.5				2.55	[72]
$\text{K}_{0.7}\text{Fe}_{1.7}\text{Se}_2$	31	560				[68]
$\text{K}_{0.99}\text{Fe}_{1.4}\text{Se}_2$	Insulator	500	500	3.16		[66]
$\text{Rb}_2\text{Fe}_4\text{Se}_5$	32	515	502	3.3	2.95	[71]
$\text{Rb}_y\text{Fe}_{2-y}\text{Se}_2$	31.5				2.15	[72]
$\text{Cs}_2\text{Fe}_4\text{Se}_5$	29	500	471	3.4	2.9	[71]
$\text{Cs}_{0.8}\text{Fe}_2\text{Se}_{1.96}$	28.5		477			[92]
$\text{Cs}_y\text{Fe}_{2-x}\text{Se}_2$	28.5	500				[73]
$\text{Cs}_{0.8}(\text{FeSe}_{0.98})_2$	29.6		478.5			[92]
$(\text{Tl}, \text{K})_2\text{Fe}_4\text{Se}_5$	28	533	506	3.2	2.6	[71]
$(\text{Tl}, \text{Rb})_2\text{Fe}_4\text{Se}_5$	32	512	511	3.2		[71]

[44, 71]. On the other hand, Mössbauer spectroscopy studies on $\text{Rb}_{0.8}\text{Fe}_{1.6}\text{Se}_2$ superconductor revealed the presence of 88% magnetic and 12% non-magnetic Fe^{2+} species which could be attributed to the $\sqrt{5} \times \sqrt{5}$ superstructure phase and vacancy free phase, respectively [95]. STM results also indicate that the superconductivity comes from the vacancy free phase and the $\sqrt{5} \times \sqrt{5}$ superstructure phase is an insulator [Figs. 6(b)–(d)] [76, 77]. Further work are needed to reconcile these seemingly conflicting results. Recently, Hu *et al.* proposed [96] that the vacancy order free phase (also superconducting phase) may have block-AFM ground state as well, similar to that in $\sqrt{5} \times \sqrt{5}$ superstructure phase. Since these two block-AFM states can be described by the same magnetic model, two separated phases can couple with each other in one sample.

2.4 Spin dynamics

The spin dynamics of the insulating $\text{Rb}_{0.89}\text{Fe}_{1.58}\text{Se}_2$ compound with a $\sqrt{5} \times \sqrt{5}$ superstructure has been investigated by inelastic neutron scattering (INS) [97]. As shown in Fig. 7, the spin waves exist in three separated energy ranges. The lowest branch, which is an acoustic mode arising mostly from antiferromagnetic interactions of the FM blocked spins [89, 98], starts from 9 meV to 70 meV. The other two branches, which are optical spin waves associated with exchange interactions of iron spins within the FM blocks, are from 80 meV to 140 meV and 180 meV to 230 meV respectively. The magnetic exchange couplings, obtained by fitting the data

with effective $J_1-J'_1-J_2-J'_2-J_3-J_c$ Heisenberg model, are summarized in Table 3, together with those in $\text{Fe}_{1.05}\text{Te}$ [99] and CaFe_2As_2 [100] for comparison. Although their static antiferromagnetic orders have completely different structures, these three iron-based compounds have comparable effective exchange couplings J_2 , which is mainly determined by a local superexchange mediated by As or Se/Te [27]. This is consistent with the idea that J_2 is the leading parameter of ground magnetic state and closely related to superconductivity in the Fe-based superconductors [101].

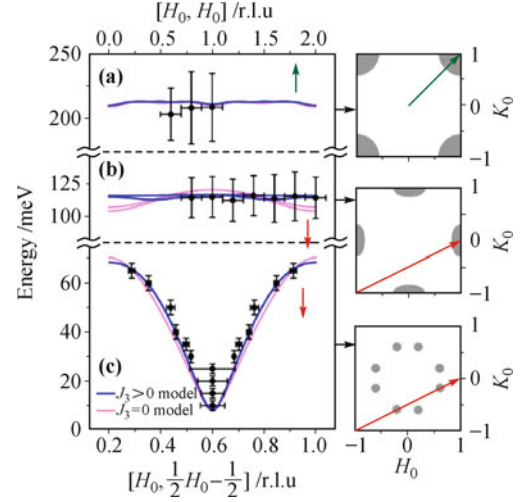


Fig. 7 Spin-wave dispersions of $\text{Rb}_{0.89}\text{Fe}_{1.58}\text{Se}_2$ along high-symmetry directions from Inelastic Neutron Scattering measurements. (a) Highest energy optical band; (b) Medium energy optical band; and (c) Acoustic spin wave mode. Corresponding cuts are illustrated at right inserts. Bands are fitted using the Heisenberg Hamiltonian. Reproduced from Ref. [97].

It is predicted that, if there is a sign change in the superconducting order parameter, a spin resonance mode with an energy between one and two times of the superconducting gap would appear at the wave vector connecting two parts of the Fermi surface with opposite gap signs [102]. The spin resonance mode, generally taken as a hallmark of unconventional pairing symmetry of superconductivity, has been observed in cuprate superconductors [103–106], heavy Fermion superconductors [107, 108] and the Fe-based superconductors [36, 85]. Such a resonance mode has been also revealed in $\text{Rb}_{0.8}\text{Fe}_{1.6}\text{Se}_2$ superconductor [109]. As shown in Fig. 8, the intensity is obviously enhanced at 14 meV across T_c at a wave vector (0.5, 0.3125, 0.5), in contrast to (0.5, 0.5, 0.5) where the resonance has been theoretically predicted in d-wave pairing symmetry [110, 111] and (0.5, 0, 0.5) where it is

Table 3 Effective exchange couplings in three typical iron-based compounds.

Compound	J_1 or J_{1a}	J'_1 or J_{1b}	J_2 or J_{2a}	J'_2 or J_{2b}	J_3	J'_3	J_c	Ref.
$\text{Rb}_{0.89}\text{Fe}_{1.58}\text{Se}_2$	-36	15	12	16	9	0	1.4	[97]
$\text{Fe}_{1.05}\text{Te}^a$	-17.5	-51	21.7	21.7	6.8			[99]
$\text{CaFe}_2\text{As}_2^b$	50	-5.7	19					[100]

^a Data fitted with $J_1-J'_1-J_2-J'_2-J_3$ Heisenberg model. ^b Data fitted with $J_{1a}-J_{1b}-J_2$ Heisenberg model.

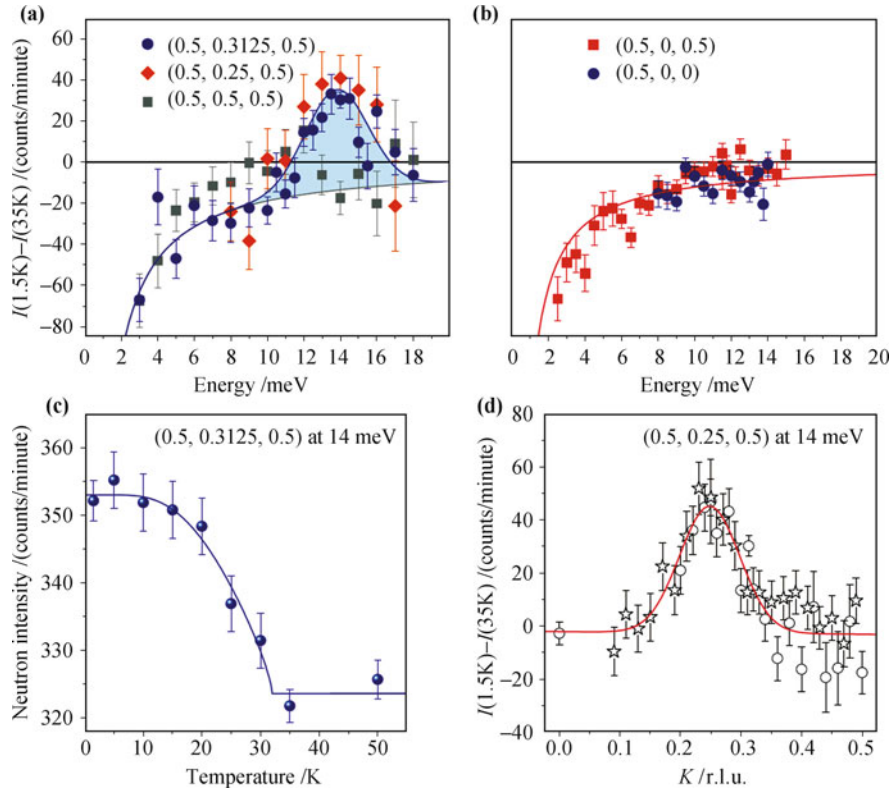


Fig. 8 Spin resonance mode revealed by Inelastic Neutron Scattering. (a) Intensity difference between the superconducting state and normal state at three Q -vectors. Resonance peak (shaded region) is found around 14 meV both at (0.5, 0.25, 0.5) and (0.5, 0.3125, 0.5) (1 Fe Brillouin Zone). (b) The same plot as (c), but for (0.5, 0, 0.5) and (0.5, 0, 0), that reveals no resonance. (c) Temperature dependence of the INS intensity at 14 meV and at (0.5, 0.3125, 0.5). It shows an order-parameter-like behavior with an onset at T_c . (d) Momentum scans along the BZ boundary of intensity difference between superconducting and normal state, with a maximum at the commensurate wave vector (0.5, 0.25, 0.5). The solid line is a Gaussian fit with a linear background. Reproduced from Ref. [109].

usually found in other Fe-based superconductors [36, 85]. Temperature dependence of the measured resonance intensity follows an order-parameter-like increase below T_c , indicating it is related to the superconducting transition [Fig. 8(c)]. The ratio of $\hbar\omega_{\text{Res}}/(k_B T_c)$ is 5.1 ± 0.4 , slightly above the nearly universal ratio of 4.3 estimated for 122-compounds, but is close to that in $\text{FeTe}_{1-x}\text{Se}_x$, LiFeAs , La-1111 , and cuprate superconductors [11, 85, 112, 113]. Another scaling parameter $2\Delta/(\hbar\omega_{\text{Res}})$ would be 0.7 ± 0.1 , if we take the superconducting gap as 10 meV measured by ARPES [47–50]. It is slightly larger than the typical value of 0.64 for cuprates but smaller than 1, following the general trend found in all Fe-based superconductors [112, 113].

It is expected that antiferromagnetic spin fluctuations, which is proposed to be a strong candidate of the pairing glue in the Fe-based superconductors and has been observed in 11-type iron-chalcogenide and iron-pnictide superconductors, would introduce a Curie–Weiss upturn near T_c in $1/(T_1 T)$ in the nuclear magnetic resonance measurements [114, 115]. However, no indication of such an enhancement is detected in several $A_x\text{Fe}_{2-y}\text{Se}_2$ ($A = \text{K}, (\text{Tl}, \text{Rb})$) superconductors so far [116–119]. Instead, the results are more similar to the overdoped non-superconducting 122-type iron-pnictide superconduc-

tors where the absence of Curie–Weiss upturn was interpreted as due to the lack of nesting between the hole and electron Fermi surface sheets because the hole band sinks below the Fermi level by electron doping. Similar band structure was observed by ARPES in various $A_x\text{Fe}_{2-y}\text{Se}_2$ superconductors, as described below.

3 Electronic properties

3.1 Band structure calculations

In $A_x\text{Fe}_{2-y}\text{Se}_2$, the intercalated A can donate electrons into the $\text{Fe}_{2-y}\text{Se}_2$ layers. The electronic structure of the iron vacancy free phase, $A_x\text{Fe}_2\text{Se}_2$ ($A = \text{K}, \text{Cs}, \text{Rb}, \text{Tl}$), can be treated as electron-doped FeSe (doping level is x) with the chemical potential raising up, or hole-doped $A\text{Fe}_2\text{Se}_2$ (doping level $1 - x$) with the chemical potential moving down, as confirmed by LDA calculations [86, 120–122]. The calculated electronic structures have little dependence on the A element because the density of states (DOS) around the Fermi level are mainly associated with Fe-3d and Se-4p orbitals [121]. The calculated band structure of $A\text{Fe}_2\text{Se}_2$ ($A = \text{K}, \text{Cs}$) is shown in Fig. 9(b), together with that of BaFe_2As_2 for comparison

[122]. The band structure of A -deficient $A_x\text{Fe}_2\text{Se}_2$ looks similar to that of BaFe_2As_2 if the chemical potential of the A -filled AFe_2Se_2 band is lowered, as shown in Fig. 9(b). Compared to BaFe_2As_2 where both the two e_g orbitals ($3z^2 - r^2$ and $x^2 - y^2$) and the three t_{2g} orbitals (xz , yz and xy orbitals) are at the Fermi level, the e_g states in $A_x\text{Fe}_2\text{Se}_2$ are sunk below E_F and the states at E_F are only contributed by the t_{2g} states. As a result, the Fermi surface of AFe_2Se_2 [Fig. 9(c)] consists of two quasi-two-dimensional electron-like Fermi surface sheets near X and a small electron-like Fermi pocket near Z which is more three-dimensional. Note that in this case all the Fermi surface sheets are electron-like.

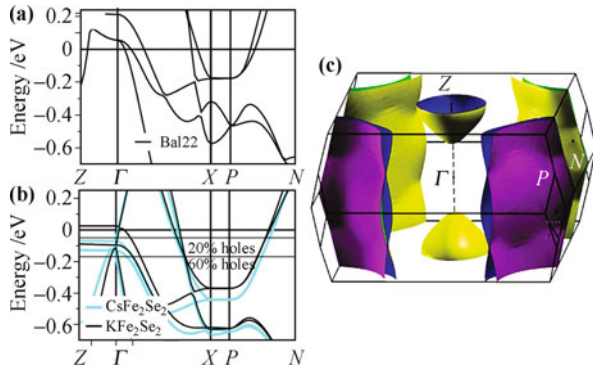


Fig. 9 (a) LDA calculated band dispersions for BaFe_2As_2 . (b) KFe_2Se_2 (black lines) and CsFe_2Se_2 (cyan lines). Fermi level position for 20% and 60% hole doping are marked. Reprinted from [122], Copyright © 2011 Springer-Verlag. (c) Calculated Fermi Surface for KFe_2Se_2 . Lattice parameters and the atomic positions are optimized. Reproduced from Ref. [120], Copyright © 2011 Elsevier.

The electronic structure of various Fe-deficient $A_x\text{Fe}_{2-y}\text{Se}_2$ phases has also been calculated, such as vacancy free phase with bi-collinear AFM [86], 245 phase with block AFM [87, 88], 245 phase in non-magnetic state [87, 88], and 234 phase II with A -collinear AFM [91]. Figure 10 shows the band structure of two typical Fe-vacancy-ordered phases. Of particular interest is the electronic structure of the $\text{A}_{0.8}\text{Fe}_{1.6}\text{Se}_2$ (245 phase) that has been commonly revealed in structural analysis. The calculated band structure for the 245 phase with block

AFM [Fig. 10(a)] indicates that it is a semiconductor with band gap as large as 400–600 meV [87, 88]. This is totally different from the vacancy free $A_x\text{Fe}_2\text{Se}_2$ phase or any other Fe-based superconductors. Detailed analysis of the orbital contribution indicates that the top valence bands are composed of both Fe-3d and Se-4p orbitals and the lower conduction bands are mainly contributed by the Fe-3d orbital. All the five up-spin orbitals are almost fully filled, while the down-spin orbitals are partially filled by d_{z^2} , d_{xy} , and d_{yz} orbitals, suggesting the Hund coupling is larger than the crystal-field splitting induced by Se atoms. The 234 phase II in magnetic ground state was also indicated by LDA calculations as an semiconductor with a smaller band gap [91], as shown in Fig. 10(b). It varies from tens to more than a hundred meV between different compounds, which is comparable to the gap value obtained from resistivity measurements [41]. It has been predicted that Mott insulator behavior can exist in both the 234 and 245 vacancy-ordered phases [123–126]. The iron vacancy is expected to reduce the neighboring iron number in 234 or 245 phases, thus making the electron hopping term between neighboring irons smaller and then the bandwidth narrower. This reduction of bandwidth tends to push the vacancy ordered phase of $A_x\text{Fe}_{2-y}\text{Se}_2$ into the Mott insulator regime.

3.2 Band structure and Fermi surface

Angle-resolved photoemission (ARPES) experiments have been successfully carried out on the $A_x\text{Fe}_{2-y}\text{Se}_2$ ($A = \text{K}, \text{Cs}, (\text{Tl}, \text{K}), (\text{Tl}, \text{Rb})$) compounds [46–50, 127, 128]. Figure 11(a) shows a wide energy scan of a photoemission spectrum which includes shallow core levels and the valence band of the $\text{K}_{0.8}\text{Fe}_{1.7}\text{Se}_2$ superconductor [46]. Besides a sharp peak of K 3p core level at a binding energy of 17.55 eV and another peak at 12 eV, a weak feature at 0.9 eV is also revealed. A weakly-dispersive broad band is observed around this energy from the ARPES measurements [Figs. 11(c) and (d)] [46]. This feature shifts to lower binding energy with increasing temperature [50]. By systematically analyzing the electronic

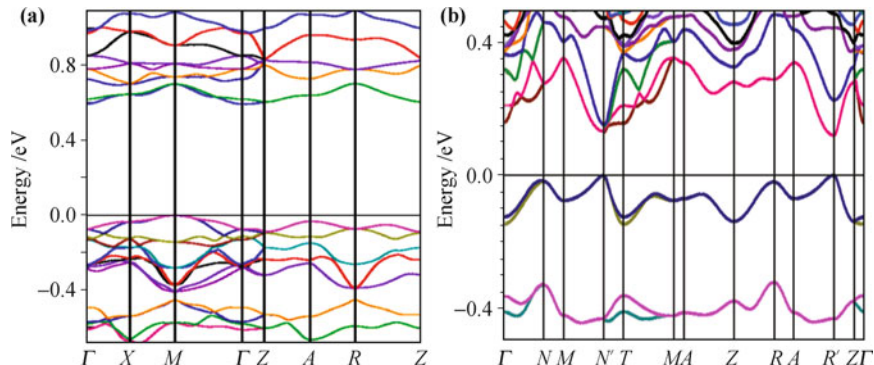


Fig. 10 Calculated electronic band structure of Fe vacancy ordered phase. (a) $\text{K}_{0.8}\text{Fe}_{1.6}\text{Se}_2$ (245 phase) in the ground state with a block AFM order [Fig. 3(b)]. Reproduced from Ref. [88]. (b) $\text{KFe}_{1.5}\text{Se}_2$ (234 phase II) with an A -collinear AFM order [Fig. 3(d)]. Reproduced from Ref. [91], Copyright © 2011 American Physical Society.

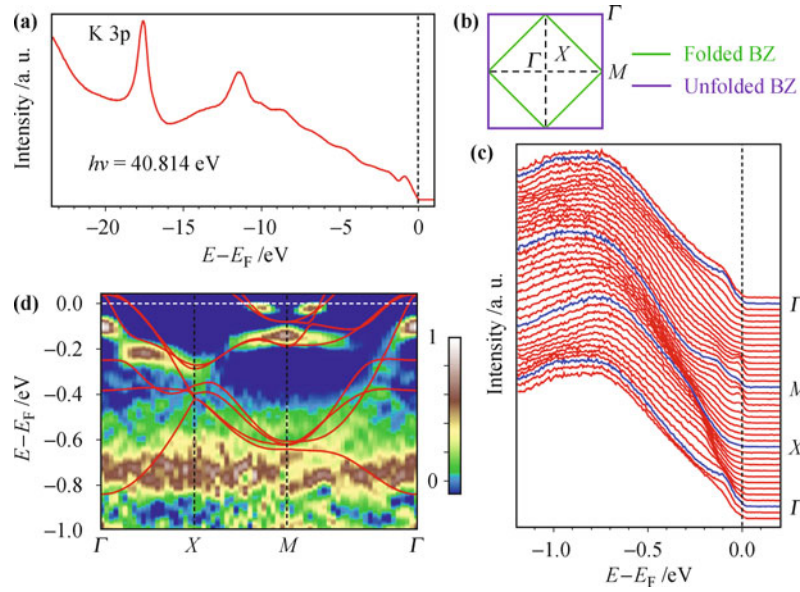


Fig. 11 (a) Photoemission spectra with a wide energy, integrated along Γ - M within $\pm 15^\circ$. (b) Schematic definition of the $\Gamma(0, 0)$, $M(\pi, 0)$ and $X(\pi/2, \pi/2)$ high symmetry points. (c) EDCs along several high symmetry directions. (d) Second derivative intensity plot along high symmetry lines, together with LDA calculated band structures of KFe_2Se_2 ($K_z = 0$), which have been shifted up by 170 meV to account for the electron doping and then renormalized by a factor 2.5. Reproduced from Ref. [46], Copyright © 2011 American Physical Society.

structures of superconducting, semiconducting and insulating $\text{K}_x\text{Fe}_{2-y}\text{Se}_2$ samples, it is suggested that it may come from an insulating phase in the samples [127].

Detailed band structure in the vicinity of Fermi level in several $A_x\text{Fe}_{2-y}\text{Se}_2$ superconductors have been investigated and typical results are shown in Fig. 12. The band structure of $(\text{Tl,Rb})_x\text{Fe}_{2-y}\text{Se}_2$ superconductor ($T_c =$

32 K) around Γ shows two electron bands [α and β in Fig. 12(a)] with the α band bottom barely touching the Fermi level. There is also a hole-like band sinking below the Fermi level [Fig. 12(b)] [48]. In $(\text{Tl,K})_x\text{Fe}_{2-y}\text{Se}_2$ and $\text{K}_x\text{Fe}_{2-y}\text{Se}_2$ superconductors [49, 50], in addition to two electron bands, two hole bands [denoted as GA and GB in Fig. 12(j)] below the Fermi level are observed.

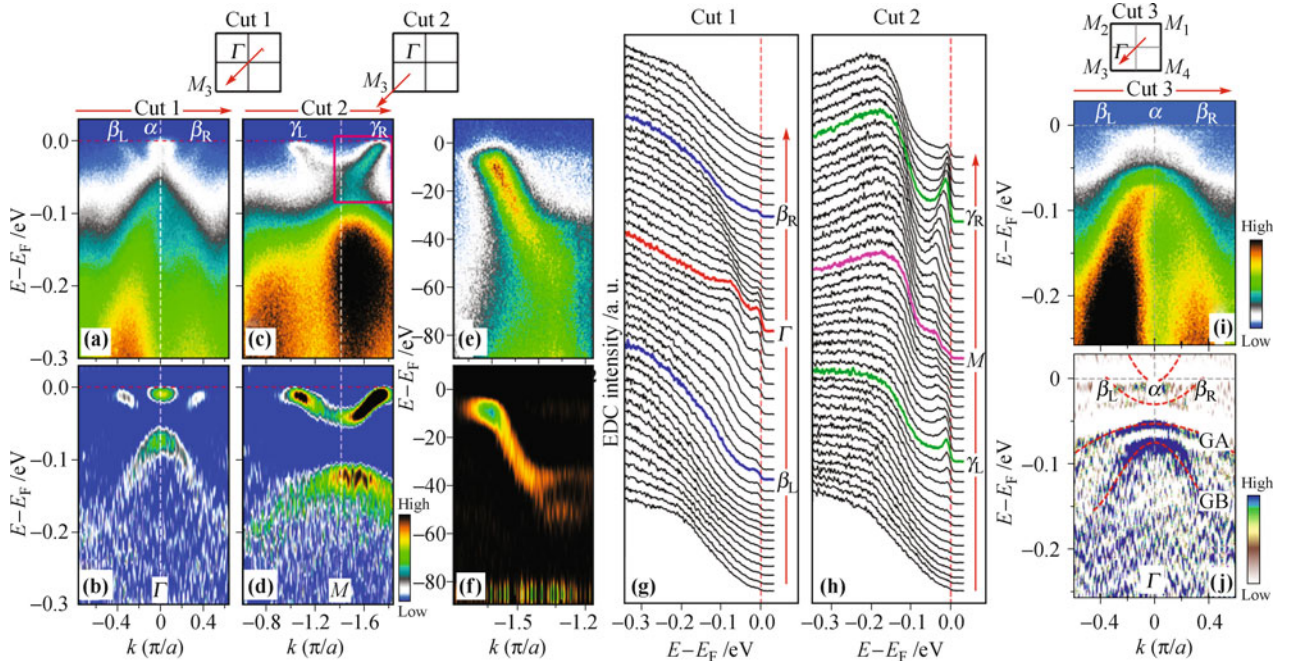


Fig. 12 Band structure and photoemission spectra of $A_x\text{Fe}_{2-y}\text{Se}_2$ superconductors measured along two high symmetry cuts [48, 49, 128]. Cut locations are illustrated at the top-left and topright inserts. (a), (c) Measured band structure images of $(\text{Tl}_{0.58}\text{Rb}_{0.42})\text{Fe}_{1.72}\text{Se}_2$ along cut 1 and cut 2, respectively. (b), (d) Their corresponding EDC second derivative images. (e), (f) Fine measurement of the band structure in red square of (c) and its corresponding EDC second derivative images. (g), (h) Photoemission spectra (EDCs) corresponding to (a) and (c), respectively. EDCs of Fermi crossing and high symmetry points are marked. (i) Measured band structure of $\text{K}_{0.68}\text{Fe}_{1.79}\text{Se}_2$ along Cut3. (j) Corresponding EDC second derivative images. Besides two electron bands, two hole bands are observed below Fermi level with different photon energies around Γ , denoted as GA and GB.

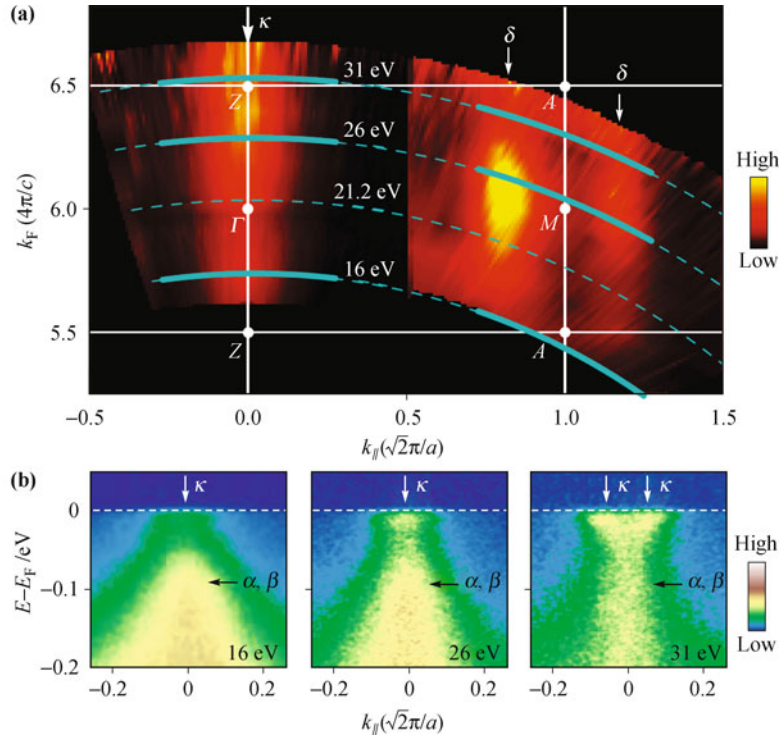


Fig. 13 The Fermi surface and band structure as a function of k_z in $\text{K}_{0.8}\text{Fe}_2\text{Se}_2$. (a) The photoemission intensity in the ΓZAM plane. (b) Measured band structures around Γ with three different photon energy. k , δ correspond to α and γ in Fig. 12 respectively. Reproduced from Ref. [47], Copyright © 2011 Nature Publishing Group.

Around M , one electron-like band is clearly observed [Figs. 12(c) and (d)]. But a more detailed measurements [Figs. 12(e) and (f)] indicate that the band is composed of two bands with similar Fermi momenta but with different band bottoms, one at ~ 40 meV and the other at ~ 60 meV [Fig. 12(f)]. The k_z dependence of these bands are obtained by ARPES using different photon energies [47]. As shown in Fig. 13, the band crossings around M do not change much at different k_z , indicative of their quasi-two-dimensional nature. However, the electron-like α band near Γ exhibits obvious k_z dependence: an electron-like band crosses the Fermi level near Z but it is above the Fermi level near Γ [47].

The $A_x\text{Fe}_{2-y}\text{Se}_2$ superconducting compounds exhibit similar Fermi surface topology, as summarized in Fig. 14. They all show two electron-like pockets around Γ (denoted as α and β) and one electron-like pocket around M (γ) which is in fact composed of two nearly degenerate Fermi surface sheets. Around Γ point, no Fermi surface sheet or only one small sheet were first reported in $\text{K}_x\text{Fe}_{2-y}\text{Se}_2$ and $\text{Cs}_x\text{Fe}_{2-y}\text{Se}_2$ [46, 47]. Later results on $(\text{Tl,Rb})_x\text{Fe}_{2-y}\text{Se}_2$ with improved data quality revealed two electron-like Fermi surface sheets around Γ [48]. This distinct Fermi surface topology was further confirmed in other measurements of $(\text{Tl,K})_x\text{Fe}_{2-y}\text{Se}_2$ and $\text{K}_x\text{Fe}_{2-y}\text{Se}_2$ [49, 50], making it a common Fermi-surface topology in the $A_x\text{Fe}_{2-y}\text{Se}_2$ superconductor. By calculating the enclosed area of all measured Fermi pockets, the doping concentration can be estimated to be 0.27 e/Fe for $(\text{Tl}_{0.58}\text{Rb}_{0.42})\text{Fe}_{1.72}\text{Se}_2$ [48] and 0.32 e/Fe for

$(\text{Tl}_{0.63}\text{K}_{0.37})\text{Fe}_{1.78}\text{Se}_2$ [50]. It is 0.18 e/Fe for both compounds, if only the two degenerate pockets around M are counted.

It is noted that the measured Fermi surface and band structure of the $A_x\text{Fe}_{2-y}\text{Se}_2$ superconductors are qualitatively consistent with band structure calculations on the vacancy free $A\text{Fe}_2\text{Se}_2$ phase (Fig. 9). One outstanding difference is the β Fermi surface sheet around Γ (Fig. 13) that is absent in the band calculations. We note here that, since the exact superconducting phase in $A_x\text{Fe}_{2-y}\text{Se}_2$ remains unclear, one should be cautious in make such a direct comparison to jump on some conclusions. An immediate issue is on the origin of this β Fermi surface. The first possibility is a surface state. While surface state on some Fe-based compounds like the FeAs_{1111} system was reported before [129], it has not been observed in the “11”-type $\text{Fe}(\text{Se},\text{Te})$ system [130]. The second possibility is whether the β band can be caused by the folding of the electron-like γ Fermi surface near M . It is noted that the Fermi surface size, the band dispersion, and the band width of the β band at Γ is similar to that of the γ band near M . A band folding picture would give a reasonable account for such a similarity if there exists a (π, π) modulation in the system that can be either structural or magnetic. An obvious issue with this scenario is that, in this case, one should also expect the folding of the α band near Γ onto the M point; but such a folding is not observed at the M point [Figs. 12(c) and (d)]. The third possibility is whether the measured β sheet is a Fermi surface at a special k_z

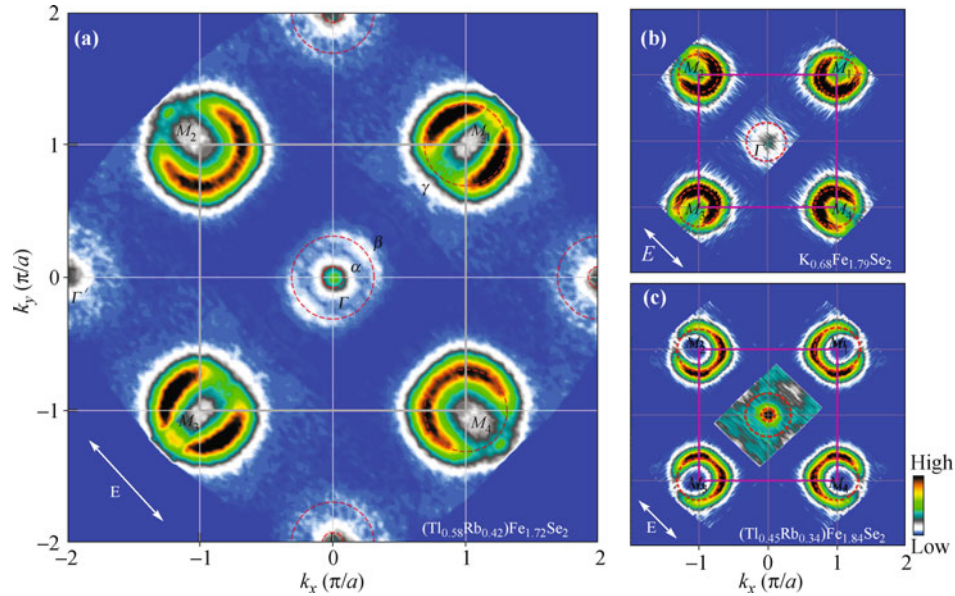


Fig. 14 Measured Fermi Surface of three $A_x\text{Fe}_{2-y}\text{Se}_2$ superconductors. (a) Fermi Surface of $(\text{Tl}_{0.58}\text{Rb}_{0.42})\text{Fe}_{1.72}\text{Se}_2$. (b) $\text{K}_{0.68}\text{Fe}_{1.79}\text{Se}_2$. (c) $(\text{Tl}_{0.45}\text{K}_{0.34})\text{Fe}_{1.84}\text{Se}_2$. Two Fermi surface sheets are observed around the Γ point which are marked as α for the inner small sheet and β for the outer large one. One Fermi Surface sheet around M is marked as γ . (a) is reproduced from Ref. [48], (b), (c) are reproduced from Ref. [49], Copyright © 2011 American Physical Society.

cut. Due to its weak intensity, this β Fermi surface is not revealed in the k_Z dependence measurements (Fig. 13). But almost the same Fermi crossing was observed with three different energies (6.994 eV, 21.2 eV and 40.8 eV), implying it is nearly two-dimensional-like [48, 128]. Note that this β Fermi surface should not be confused with the α pocket at Z because they have very different size, particularly they are observed simultaneously near Γ point. The origin of the β Fermi surface is still an open question to be further addressed.

It is under debate whether the superconducting phase in $A_x\text{Fe}_{2-y}\text{Se}_2$ coexists with the Fe vacancy ordered $\sqrt{5} \times \sqrt{5}$ phase [71]. Under such a circumstance, one would expect the Brillouin zone for the $\sqrt{5} \times \sqrt{5}$ phase to be $1/5$ of the original 1×1 phase [Fig. 3(e)]. The $\sqrt{5} \times \sqrt{5}$ superstructure would produce multiple folded Fermi surface sheets from the original one pocket near M or near Γ . However, no indication of such folded Fermi surface sheets is observed in the measured results (Fig. 14). While one cannot fully rule out that the folded Fermi surface is not seen because they may be too weak, their absence is not compatible with the scenario of coexistence of superconductivity and the $\sqrt{5} \times \sqrt{5}$ superstructure. The same argument is also applicable to other possible ordered superstructures like the $2\sqrt{2} \times \sqrt{2}$ and 2×2 phases.

Study on the electronic structure evolution from an insulator to a superconductor is helpful in addressing the key issue on what the parent compound is for the $A_x\text{Fe}_{2-y}\text{Se}_2$ superconductors. Valence bands were measured on three types of $\text{K}_x\text{Fe}_{2-y}\text{Se}_2$ compounds (insulator, semiconductor and superconductor) [113]. In comparison with a superconductor, no bands are observed

within the 0.5 eV energy range below E_F in an antiferromagnetically insulating sample. Two high energy features around 0.7 eV and 1.6 eV binding energies were observed in all three type of samples. It was found that, by increasing the temperature or reducing the photon intensity, these two features shift toward low binding energy, which is a typical behavior called charging effect in photoemission measurements on insulating samples. On the other hand, no such charging effect was observed in low energy feature of a superconductor. Therefore, the high energy features (0.7 eV and 1.6 eV) and low energy near- E_F features may not come from the same phase in the sample: the former may come from the insulating phase while the latter from metallic or superconducting phase. Similar phase separation behavior was also found in the semiconducting sample. Such results are consistent with the phase separation picture also revealed by TEM [67] and STM [76, 77].

In contrast to the dramatic difference between the electronic structure of the insulating and superconducting phases, the low energy features of the semiconductor are reminiscent of those in the superconducting sample. As illustrated in Fig. 15(b), only hole-like bands with a band gap of ~ 20 meV is observed around Γ . The band structure of the semiconductor seems to resemble that of the superconductor by shifting the chemical potential of the superconductor downwards by 55 meV and coincidentally the chemical potential lies in the gap between the electron and hole bands. No shadow band possibly caused by magnetic order or lattice superstructure was observed in this semiconductor. These observations led the authors [127] to propose that the actual parent compound of $\text{K}_x\text{Fe}_{2-y}\text{Se}_2$ superconductor is

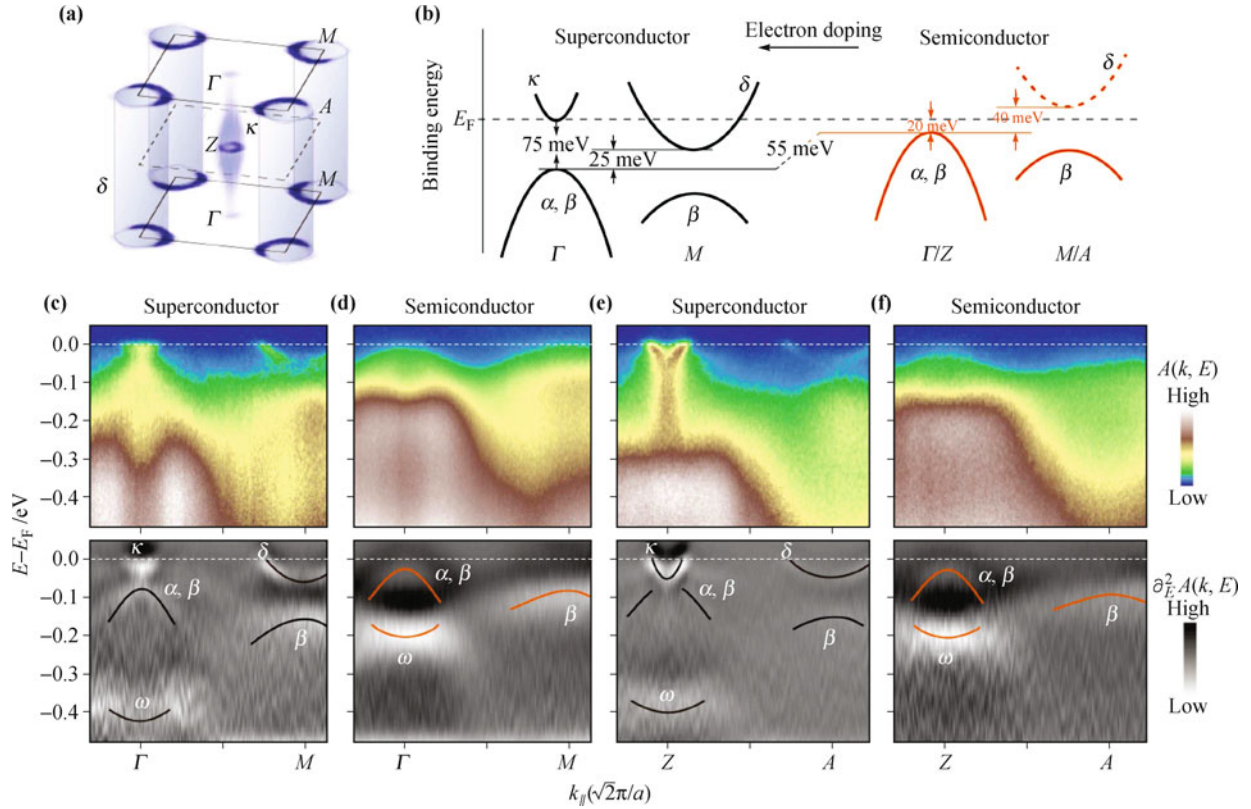


Fig. 15 Low energy electronic structures of the superconducting and semiconducting $K_x\text{Fe}_{2-y}\text{Se}_2$. **(a)** The Fermi surface of the superconducting phase in the three-dimensional Brillouin zone. **(b)** The sketch of the band structure evolution from the semiconductor to the superconductor. **(c)** The photoemission intensities (upper panel) and its second derivative with respect to energy (lower panel) along the Γ - M direction for the superconductor taken at normal state. **(d)** Same as (c) but for semiconductor. **(e)**, **(f)** Same as (c) and (d) along Z - A direction. Reproduced from Ref. [127].

not the insulating phases, but the semiconducting phase; superconductivity can be obtained by doping the semiconductor. More work needs to be done to confirm this interesting scenario.

3.3 Superconducting gap and pairing symmetry

ARPES can directly measure superconducting gap and its momentum dependence, thus providing key information on the pairing symmetry of superconductivity. Figure 16 first shows typical ARPES results on measuring temperature dependence of superconducting gap in $(\text{Tl,Rb})_x\text{Fe}_{2-y}\text{Se}_2$ superconductor [48, 128]. The photoemission data are taken on different Fermi surface sheets at different temperatures [Figs. 16(a) and (e)] and the photoemission spectra (energy distribution curves, EDCs) on the Fermi surface are symmetrized [Figs. 16(c) and (f)] to visualize the superconducting gap opening and obtain the gap size. It is clear that for both the β and γ Fermi surface sheets the superconducting gap opens right below $T_c = 32$ K. Also the quasiparticle peak sharpens up upon entering the superconducting state. As seen in Fig. 16(b), a sharp quasiparticle peak with a narrow width of only 9 meV (Full-width-at-half-maximum) is observed at low temperature for the γ Fermi surface near M . The superconducting gap size can be determined

by taking the EDC peak position. As seen in Fig. 16(d), the gap size on the γ Fermi surface near M follows the standard BCS form with a $\Delta_0 \sim 9.7$ meV [128]. Similar temperature dependence of the superconducting gap is also reported in other $A_x\text{Fe}_{2-y}\text{Se}_2$ superconductors, but with different gap sizes [47, 49, 50]. With respect to the small α pocket, no gap opening was detected in $(\text{Tl,Rb})_x\text{Fe}_{2-y}\text{Se}_2$ because the band is slightly above the Fermi level near Γ [48]. A superconducting gap of ~ 7 meV was reported below T_c in $K_x\text{Fe}_{2-y}\text{Se}_2$ on the α Fermi surface near Z with a clear Fermi crossing [47].

The ARPES measurements on different $A_x\text{Fe}_{2-y}\text{Se}_2$ ($A = \text{K}, (\text{Tl,K}), (\text{Tl,Rb})$) superconductors give nearly isotropic superconducting gap on the γ Fermi surface around M [47–50, 131] [Fig. 17(e)]. In order to measure the momentum-dependent superconducting gap on the weak β Fermi surface around Γ , high resolution laser-based ARPES measurements have been performed which also give a nearly isotropic superconducting gap [Fig. 17(d)] [128]. It was also found that the gap sizes on both α and γ Fermi surface sheets show little variation at different Fermi crossing along $k_Z Z$ [47]. So far no evidence of gap node is observed in the $A_x\text{Fe}_{2-y}\text{Se}_2$ superconductors.

The low-temperature specific heat measurement [132] and NMR measurement [118] also suggest a nodeless gap.

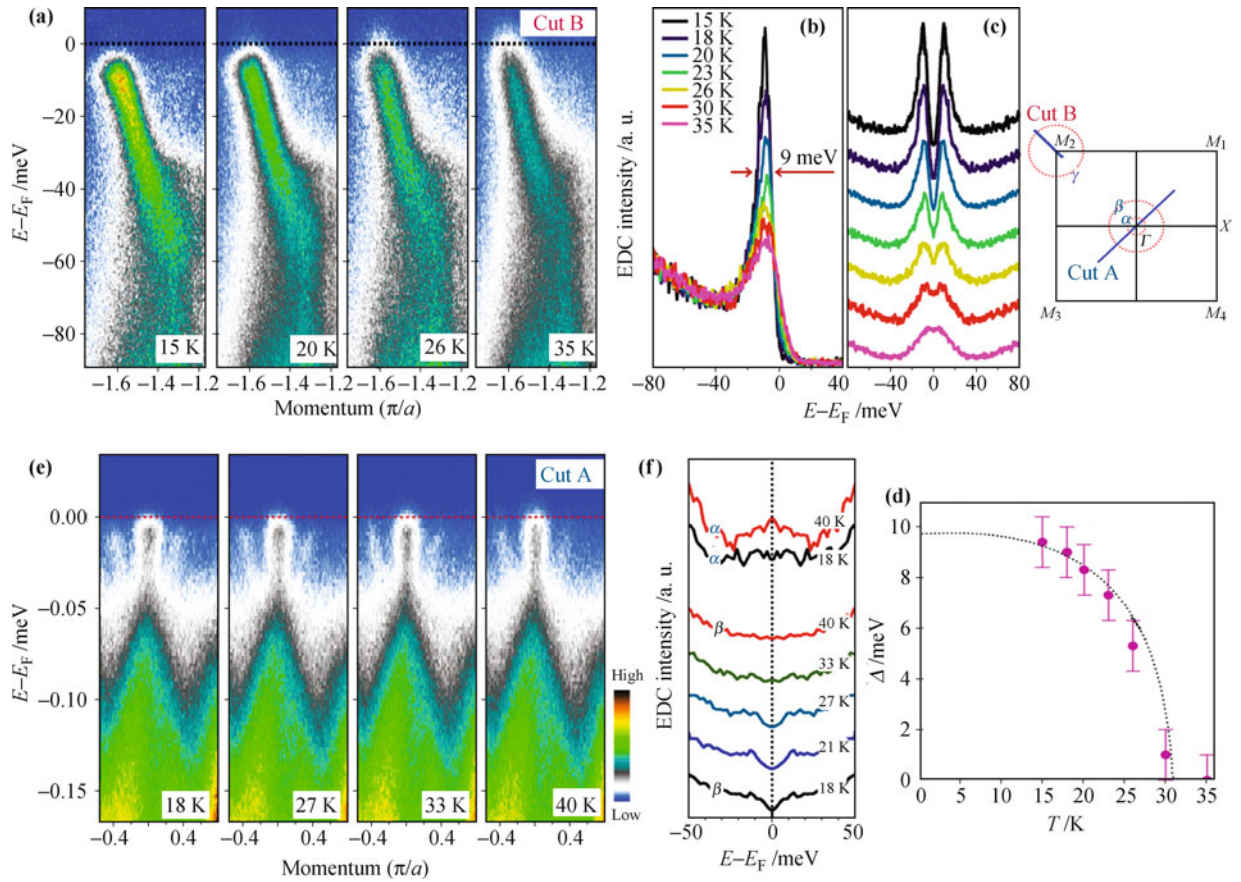


Fig. 16 Temperature dependence of band structures and superconducting gap of $(\text{Tl}_{0.58}\text{Rb}_{0.42})\text{Fe}_{1.72}\text{Se}_2$ [48, 128]. Cut locations are illustrated at top-right inset. (a) Temperature dependent band structure image plots of $(\text{Tl}_{0.58}\text{Rb}_{0.42})\text{Fe}_{1.72}\text{Se}_2$ along cut B around M point. (b) EDCs at the Fermi crossing extracted from (a) at different temperatures. (c) Symmetrized EDCs to remove the Fermi–Dirac function and visualize gap opening. (d) Temperature dependent superconducting gap of $(\text{Tl}_{0.58}\text{Rb}_{0.42})\text{Fe}_{1.72}\text{Se}_2$ on the γ FS. The gap size is obtained by picking up the peak position in (c). Dashed line is a BCS-form fit with $\Delta_0 = 9.7$ meV. (e) Temperature dependent band images along cut A around Γ point. (f) Symmetrized EDCs of the β band crossing point and Γ point.

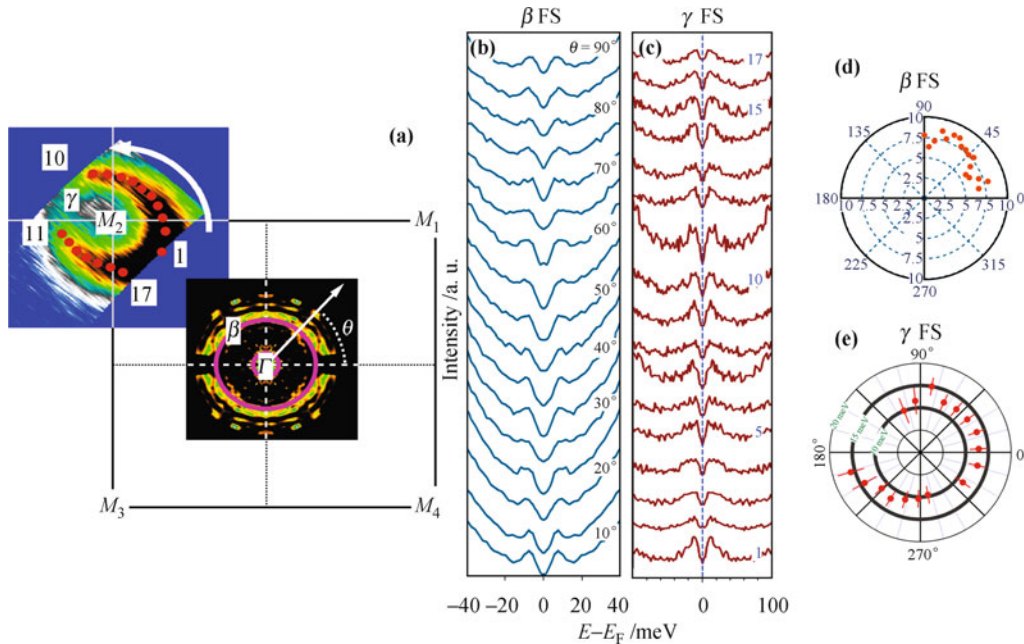


Fig. 17 Momentum dependent superconducting gap of $(\text{Tl}_{0.58}\text{Rb}_{0.42})\text{Fe}_{1.72}\text{Se}_2$ [48, 128]. (a) Fermi surface mapping around M_2 at 15 K [48] and a second derivative image of measured Fermi Surface around Γ at 18 K measured by high resolution laser-based ARPES [128]. (b) Symmetrized EDCs at the Fermi crossing of β Fermi surface sheet; The angle is defined in (a). (c) Symmetrized EDCs at the Fermi crossing of γ FS sheet as marked in (a). (d), (e) Momentum dependent superconducting gap size for the β Fermi surface sheet around Γ and γ Fermi surface sheet around M , respectively.

Table 4 Superconducting gap size of $A_x\text{Fe}_{2-y}\text{Se}_2$.

Sample	T_c/K	$\Delta_{(\gamma)}/\text{meV}$	$2\Delta_{(\gamma)}/(k_B T_c)/\text{meV}$	Δ_β/meV	Δ_α/meV	Ref.
$\text{K}_{0.8}\text{Fe}_2\text{Se}_2$	31.7	10.3	8		7	[47]
$(\text{Tl}, \text{Rb})\text{Fe}_{1.72}\text{Se}_2$	32	12	9	15	0	[48]
$(\text{Tl}, \text{K})\text{Fe}_{1.78}\text{Se}_2$	29	8.5	7			[50]
$\text{K}_{0.68}\text{Fe}_{1.79}\text{Se}_2$	32	9	7			[49]
$(\text{Tl}, \text{K})\text{Fe}_{1.84}\text{Se}_2$	28	8	7			[49]
$(\text{Tl}, \text{Rb})\text{Fe}_{1.72}\text{Se}_2$	32	9.7	7.5	8	0	[128]
KFe_2Se_2	$\sim 28^*$	4/1	3.5/0.95			[76]
$\text{K}_{0.73}\text{Fe}_{1.67}\text{Se}_2$	32	7	5			[77]

* T_c is estimated from temperature dependent STS data.

The scanning tunneling spectroscopy measurements, which reveal the averaged electronic structure of the entire Brillouin Zone, show a 7 meV superconducting gap in the cleaved $\text{K}_x\text{Fe}_{2-y}\text{Se}_2$ sample [77]. For thin film sample grown by MBE, however, two superconducting gaps with much smaller size, 1 meV and 4 meV, were reported [Fig. 5(c)] [76]. Table 4 summarizes the superconducting gap size of different $A_x\text{Fe}_{2-y}\text{Se}_2$ samples measured by different techniques. The ratio of $2\Delta/(k_B T_c)$ obtained from single crystal samples is larger than the traditional BCS weak-coupling value of 3.54, which indicates that $A_x\text{Fe}_{2-y}\text{Se}_2$ superconductor is in a strong-coupling regime in the BCS picture. On the other hand, the small ratio of 0.9 and 3.5 obtained in MBE-grown film samples puts it in a weak-coupling regime. This difference between the bulk samples and film samples needs to be further clarified.

In the Fe-based superconductors, it has been proposed that the interband scattering between the hole-like bands near Γ and the electron-like bands near M gives rise to electron pairing and superconductivity with a s^\pm symmetry (Fig. 18, left panel) [18, 21–26]. With the absence of hole-like Fermi surface around Γ , this picture is no longer applicable in the $A_x\text{Fe}_{2-y}\text{Se}_2$ superconductors. In this case, from a weak coupling point of view, the repulsive inter-electron-pocket pair scattering between two M pockets (Fig. 18, right panel) would give a $d_{x^2-y^2}$ pairing

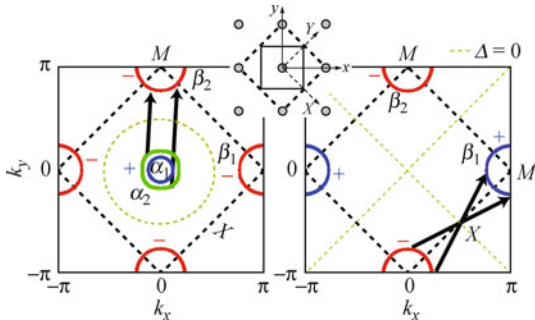


Fig. 18 Schematic gap symmetry based on electron scattering [18]. *Left:* s^\pm gap structure in iron-pnictide superconductor, due to electron scattering between the hole pockets in the BZ center and the electron pocket in the BZ corner. *Right:* Nodeless d -wave gap symmetry as a result of electron scattering between two electron pockets around BZ corner. Gap nodes are marked by yellow dashed lines.

symmetry [18, 110, 111, 133]. On the other hand, in the viewpoint of a doped Mott insulator, by calculating the t - J model, both s -wave and d -wave pairing are possible at different regions of phase diagram [125, 134]. But s -wave pairing symmetry is robust if the antiferromagnetic J_2 is the main factor for pairing and the J_1 is ferromagnetic [135]. It is also proposed that orbital order and its fluctuations would give rise to a s^{++} wave pairing with the presence of a moderate electron-phonon interaction [136].

The observation of a nearly isotropic, nodeless superconducting gap in $A_x\text{Fe}_{2-y}\text{Se}_2$ superconductors favors an s -wave pairing symmetry. It is also considered to be consistent with a nodeless d -wave pairing because the d -wave node is along the diagonal of 1 Fe Brillouin zone (Fig. 18, right panel); the γ Fermi surface sheet may show a nearly isotropic gap because it does not cross this node line. However, as pointed out by Mazin [137], if there is a sign change between the $(0, -\pi)$ Fermi pocket and $(\pi, 0)$ pocket, gap node would still be expected at the crossing points of two Fermi pockets around the same M point due to the folding from 1 Fe Brillouin zone to 2 Fe Brillouin zone, which is then inconsistent with existing experimental results. Up to now no conclusive answer to the pairing symmetry of the $A_x\text{Fe}_{2-y}\text{Se}_2$ superconductors has been reached yet. We note that, the weak β Fermi pocket around Γ crosses the node line in d -wave pairing, and if it is proven to be intrinsic, its nearly isotropic gap [Fig. 17(d)] [48, 128] could rule out the d -wave pairing scenario.

3.4 Electron dynamics

The coupling between electron and boson modes plays an important role in giving rise to the electron pairing. Such a coupling can be probed directly by ARPES by measuring the electron self-energy which manifest itself as a kink structure on a band dispersion [138, 139]. A number of phonon modes are observed in the $A_x\text{Fe}_{2-y}\text{Se}_2$ ($A = \text{K}, \text{Rb}, \text{Tl}$) superconductors by Raman scattering and optical studies [140–142]. A magnetic resonance mode has been predicted [110, 111] and observed (Fig. 8) in the superconducting state of $A_x\text{Fe}_{2-y}\text{Se}_2$ at an energy of 14

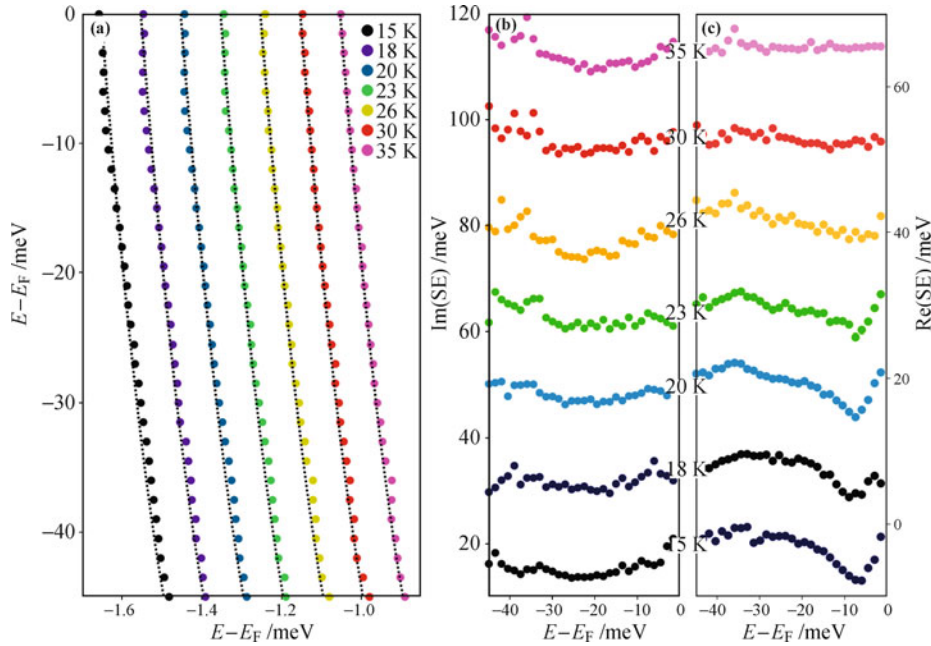


Fig. 19 Temperature dependent electronic dynamics around M point [128]. (a) Fitted band dispersions at different temperatures along cut B in Fig. 16. Black dashed lines are selected parabolic “bare band”. (b), (c) Extracted imaginary and real parts of electron self-energy.

meV [109]. Therefore, it is interesting to investigate the electronic dynamics in $A_x\text{Fe}_{2-y}\text{Se}_2$ superconductors. Figure 19 shows the measured band dispersion of the $(\text{Tl,Rb})_x\text{Fe}_{2-y}\text{Se}_2$ superconductor around M point at different temperatures, together with the extracted imaginary and real parts of the electron self-energy [128]. The transition near 7 meV in the real part of electron self-energy [Fig. 19(c)] is caused by the superconducting gap opening and is not the effect of electron–boson coupling. Except for this feature, no obvious dispersion kink is observed in the real part of self-energy at both normal and superconducting states. These observations indicate that the electron–boson coupling is weak in the $A_x\text{Fe}_{2-y}\text{Se}_2$ superconductors.

4 Summary and perspective

Although it has been only one year since the discovery of the $A_x\text{Fe}_{2-y}\text{Se}_2$ superconductors, significant progress has been made in studying their unique structural, magnetic and electronic properties. Unique characteristics have been revealed and studied, such as the existence of Fe vacancy and its ordering, the novel magnetic structure of block antiferromagnetism with large magnetic moment and high Néel temperature, and the possible insulating nature of its parent compound. In particular, key insights have been drawn in understanding the pairing mechanism of the Fe-based superconductors with its distinct electronic structure, i.e., with the absence of hole-like Fermi surface around Γ , high T_c (~ 30 K at ambient pressure and 48 K under pressure) is achieved in this system.

On the other hand, there are complications and open questions around this new system. First and foremost, what is the exact superconducting phase in the $A_x\text{Fe}_{2-y}\text{Se}_2$ superconductors? STM and ARPES data favor Fe-vacancy-free $A_x\text{Fe}_2\text{Se}_2$ phase, but neutron scattering and Raman studies indicate that superconductivity is associated with the Fe-vacancy ordered $\sqrt{5} \times \sqrt{5}$ superstructure phase. The answer becomes complicated due to the existence of multiple phases in the superconducting samples which leads to another question of phase separation. Is the phase separation in the $A_x\text{Fe}_{2-y}\text{Se}_2$ superconductors inevitable or a problem of sample preparation? Can the phase separation properly account for many unusual properties observed so far? The final answer to the superconducting phase will help in answering the question of its parent compound: whether it is an insulator, a semiconductor, or a poor metal. Of course, the ultimately important issue is to reveal the pairing mechanism of superconductivity. To conclude, the $A_x\text{Fe}_{2-y}\text{Se}_2$ superconductors provide a new platform for investigating the properties and mechanism of superconductivity. The storm caused by this new superconducting family is continuing and more exciting results are expected under the future effort.

Acknowledgements We would like to thank the collaborations with Shanyu Liu, Xiaowen Jia, Junfeng He, Yingying Peng, Li Yu, Xu Liu, Guodong Liu, Shaolong He, Xiaoli Dong, Jun Zhang, Hangdong Wang, Chiheng Dong, Minghu Fang, J. B. He, D. M. Wang, G. F. Chen, J. G. Guo, X. L. Chen, Xiaoyang Wang, Qinjun Peng, Zhimin Wang, Shenjin Zhang, Feng Yang, Zuyan Xu, and Chuangtian Chen. This work was financially supported by the National Natural Science Foundation of China (Grant No. 10734120) and the State Key Development Program for Basic Research of China (973 program, Grant No. 2011CB921703).

References and notes

1. Y. Kamihara, T. Watanabe, M. Hirano, and H. Hosono, *J. Am. Chem. Soc.*, 2008, 130(11): 3296
2. X. H. Chen, T. Wu, G. Wu, R. H. Liu, H. Chen, and D. F. Fang, *Nature*, 2008, 453(7196): 761
3. G. F. Chen, Z. Li, D. Wu, G. Li, W. Z. Hu, J. Dong, P. Zheng, J. L. Luo, and N. L. Wang, *Phys. Rev. Lett.*, 2008, 100(24): 247002
4. Z. A. Ren, W. Lu, J. Yang, W. Yi, X. L. Shen, Z. C. Li, G. C. Chen, X. L. Dong, L. L. Sun, F. Zhou, and Z. X. Zhao, *Chin. Phys. Lett.*, 2008, 25(7): 2215
5. C. Wang, L. Li, S. Chi, Z. Zhu, Z. Ren, Y. Li, Y. Wang, X. Lin, Y. Luo, S. Jiang, X. Xu, G. Cao, and Z. Xu, *Europhys. Lett.*, 2008, 83(6): 67006
6. J. G. Bednorz and K. A. Müller, *Z. Phys. B*, 1986, 64(2): 189
7. M. Rotter, M. Tegel, and D. Johrendt, *Phys. Rev. Lett.*, 2008, 101(10): 107006
8. X. C. Wang, Q. Liu, Y. Lv, W. Gao, L. Yang, R. Yu, F. Li, and C. Q. Jin, *Solid State Commun.*, 2008, 148(11–12): 538
9. F. C. Hsu, J. Y. Luo, K. W. Yeh, T. K. Chen, T. W. Huang, P. M. Wu, Y. C. Lee, Y. L. Huang, Y. Y. Chu, D. C. Yan, and M. K. Wu, *Proc. Natl. Acad. Sci. USA*, 2008, 105(38): 14262
10. K. Ishida, Y. Nakai, and H. Hosono, *J. Phys. Soc. Jpn.*, 2009, 78(6): 062001
11. J. Paglione and R. L. Greene, *Nat. Phys.*, 2010, 6(9): 645
12. D. C. Johnston, *Adv. Phys.*, 2010, 59(6): 803
13. F. Wang and D. H. Lee, *Science*, 2011, 332(6026): 200
14. A. S. Sefat, R. Jin, M. A. McGuire, B. C. Sales, D. J. Singh, and D. Mandrus, *Phys. Rev. Lett.*, 2008, 101(11): 117004
15. C. Wang, Y. K. Li, Z. W. Zhu, S. Jiang, X. Lin, Y. K. Luo, S. Chi, L. J. Li, Z. Ren, M. He, H. Chen, Y. T. Wang, Q. Tao, G. H. Cao, and Z. A. Xu, *Phys. Rev. B*, 2009, 79(5): 054521
16. P. A. Lee, N. Nagaosa, and X. G. Wen, *Rev. Mod. Phys.*, 2006, 78(1): 17
17. D. J. Singh and M. H. Du, *Phys. Rev. Lett.*, 2008, 100(23): 237003
18. K. Kuroki, S. Onari, R. Arita, H. Usui, Y. Tanaka, H. Kontani, and H. Aoki, *Phys. Rev. Lett.*, 2008, 101(8): 087004
19. F. J. Ma, Z. Y. Lu, and T. Xiang, *Front. Phys. China*, 2010, 5(2): 147
20. X. J. Zhou, G. D. Liu, H. Y. Liu, L. Zhao, W. T. Zhang, X. W. Jia, and J. Q. Meng, *Front. Phys. China*, 2009, 4(4): 427
21. I. I. Mazin, D. J. Singh, M. D. Johannes, and M. H. Du, *Phys. Rev. Lett.*, 2008, 101(5): 057003
22. F. Wang, H. Zhai, Y. Ran, A. Vishwanath, and D. H. Lee, *Phys. Rev. Lett.*, 2009, 102(4): 047005
23. A. V. Chubukov, D. V. Efremov, and I. Eremin, *Phys. Rev. B*, 2008, 78(13): 134512
24. V. Stanev, J. Kang, and Z. Tesanovic, *Phys. Rev. B*, 2008, 78(18): 184509
25. F. Wang, H. Zhai, and D. H. Lee, *Europhys. Lett.*, 2009, 85(3): 37005
26. I. I. Mazin and M. D. Johannes, *Nat. Phys.*, 2009, 5(2): 141
27. Q. M. Si and E. Abrahams, *Phys. Rev. Lett.*, 2008, 101(7): 076401
28. T. Yildirim, *Phys. Rev. Lett.*, 2008, 101(5): 057010
29. J. S. Wu, P. Phillips, and A. H. Castro Neto, *Phys. Rev. Lett.*, 2008, 101(12): 126401
30. C. Fang, H. Yao, W. F. Tsai, J. P. Hu, and S. A. Kivelson, *Phys. Rev. B*, 2008, 77(22): 224509
31. C. K. Xu, M. Mueller, and S. Sachdev, *Phys. Rev. B* 78, 020501(R) (2008).
32. H. Kontani and S. Onari, *Phys. Rev. Lett.*, 2010, 104(15): 157001
33. T. Saito, S. Onari, and H. Kontani, *Phys. Rev. B*, 2010, 82(14): 144510
34. L. Zhao, H. Y. Liu, W. T. Zhang, J. Q. Meng, X. W. Jia, G. D. Liu, X. L. Dong, G. F. Chen, J. L. Luo, N. L. Wang, G. L. Wang, Y. Zhou, Y. Zhu, X. Y. Wang, Z. X. Zhao, Z. Y. Xu, C. T. Chen, and X. J. Zhou, *Chin. Phys. Lett.*, 2008, 25: 4402
35. H. Ding, P. Richard, K. Nakayama, K. Sugawara, T. Arakane, Y. Sekiba, A. Takayama, S. Souma, T. Sato, T. Takahashi, Z. Wang, X. Dai, Z. Fang, G. F. Chen, J. L. Luo, and N. L. Wang, *Europhys. Lett.*, 2008, 83(4): 47001
36. A. D. Christianson, E. A. Goremychkin, R. Osborn, S. Rosenkranz, M. D. Lumsden, C. D. Malliakas, I. S. Todorov, H. Claus, D. Y. Chung, M. G. Kanatzidis, R. I. Bewley, and T. Guidi, *Nature*, 2008, 456: 930
37. T. Hanaguri, S. Niitaka, K. Kuroki, and H. Takagi, *Science*, 2010, 328(5977): 474
38. J. G. Guo, S. F. Jin, G. Wang, S. C. Wang, K. X. Zhu, T. T. Zhou, M. He, and X. L. Chen, *Phys. Rev. B*, 2010, 82(18): 180520(R)
39. A. Krzton-Maziopa, Z. Shermadini, E. Pomjakushina, V. Pomjakushin, M. Bendele, A. Amato, R. Khasanov, H. Luetkens, and K. Conder, *J. Phys.: Condens. Matter*, 2011, 23(5): 052203
40. C. H. Li, B. Shen, F. Han, X. Zhu, and H. H. Wen, *Phys. Rev. B*, 2011, 83(18): 184521
41. M. H. Fang, H. D. Wang, C. H. Dong, Z. J. Li, C. M. Feng, J. Chen, and H. Q. Yuan, *Europhys. Lett.*, 2011, 94(2): 27009
42. H. D. Wang, C. H. Dong, Z. J. Li, Q. H. Mao, S. S. Zhu, C. M. Feng, H. Q. Yuan, and M. H. Fang, *Europhys. Lett.*, 2011, 93(4): 47004
43. I. I. Mazin, *Physics*, 2011, 4: 26
44. W. Bao, Q. Z. Huang, G. F. Chen, D. M. Wang, J. B. He, and Y. M. Qiu, *Chin. Phys. Lett.*, 2011, 28(8): 086104
45. M. Wang, M. Wang, G. Li, Q. Huang, C. Li, G. Tan, C. Zhang, H. Cao, W. Tian, Y. Zhao, Y. Chen, X. Lu, B. Sheng, H. Luo, S. Li, M. Fang, J. Zarestky, W. Ratcliff, M. Lumsden, J. Lynn, and P. Dai, *Phys. Rev. B*, 2011, 84(9): 094504
46. T. Qian, X. P. Wang, W. C. Jin, P. Zhang, P. Richard, G. Xu, X. Dai, Z. Fang, J. G. Guo, X. L. Chen, and H. Ding, *Phys. Rev. Lett.*, 2011, 106(18): 187001
47. Y. Zhang, L. X. Yang, M. Xu, Z. R. Ye, F. Chen, C. He, H. C. Xu, J. Jiang, B. P. Xie, J. J. Ying, X. F. Wang, X. H. Chen, J. P. Hu, M. Matsunami, S. Kimura, and D. L. Feng, *Nat. Mater.*, 2011, 10(4): 273
48. D. Mou, S. Liu, X. Jia, J. He, Y. Peng, L. Zhao, L. Yu, G. Liu, S. He, X. Dong, J. Zhang, H. Wang, C. Dong, M. Fang, X. Wang, Q. Peng, Z. Wang, S. Zhang, F. Yang, Z. Xu, C. Chen, and X. J. Zhou, *Phys. Rev. Lett.*, 2011, 106(10): 107001

49. L. Zhao, D. X. Mou, S. Y. Liu, X. W. Jia, J. F. He, Y. Y. Peng, L. Yu, X. Liu, G. D. Liu, S. L. He, X. L. Dong, J. Zhang, J. B. He, D. M. Wang, G. F. Chen, J. G. Guo, X. L. Chen, X. Y. Wang, Q. J. Peng, Z. M. Wang, S. J. Zhang, F. Yang, Z. Y. Xu, C. T. Chen, and X. J. Zhou, *Phys. Rev. B*, 2011, 83(14): 140508(R)
50. X. Wang, T. Qian, P. Richard, P. Zhang, J. Dong, H. D. Wang, C. H. Dong, M. H. Fang, and H. Ding, *Europhys. Lett.*, 2011, 93(5): 57001
51. A. L. Ivanovskii, *Physica C*, 2011, 471(13–14): 409
52. L. Häggström, H. R. Verma, S. Bjarman, R. Wäppling, and R. Berger, *J. Solid State Chem.*, 1986, 63(3): 401
53. H. Sabrowsky, M. Rosenberg, D. Welz, P. Deppe, and W. Schafer, *J. Magn. Magn. Mater.*, 1986, 54–57: 1497
54. L. Häggström, A. Seidel, and Rolf Berger, *J. Magn. Magn. Mater.*, 1991, 98(1–2): 37
55. D. M. Wang, J. He, T. L. Xia, and G. Chen, *Phys. Rev. B*, 2011, 83(13): 132502
56. L. L. Sun, X. J. Chen, J. Guo, P. W. Gao, H. D. Wang, M. H. Fang, X. L. Chen, G. F. Chen, Q. Wu, C. Zhang, D. C. Gu, X. L. Dong, K. Yang, A. G. Li, X. Dai, H. K. Mao and Z. X. Zhao, arXiv:1110.2600, 2011
57. V. Tsurkan, J. Deisenhofer, A. Günther, H. A. Krug von Nidda, S. Widmann, and A. Loidl, arXiv:1107.3932, 2011
58. Y. J. Yan, M. Zhang, A. F. Wang, J. J. Ying, Z. Y. Li, W. Qin, X. G. Luo, J. Q. Li, J. P. Hu, and X. H. Chen, arXiv:1104.4941, 2011
59. R. H. Liu, X. G. Luo, M. Zhang, A. F. Wang, J. J. Ying, X. F. Wang, Y. J. Yan, Z. J. Xiang, P. Cheng, G. J. Ye, Z. Y. Li, and X. H. Chen, *Europhys. Lett.*, 2011, 94(2): 27008
60. J. Guo, X. J. Chen, C. Zhang, J. G. Guo, X. L. Chen, Q. Wu, D. C. Gu, P. W. Gao, X. Dai, L. H. Yang, H. K. Mao, L. L. Sun, and Z. X. Zhao, arXiv:1101.0092, 2011
61. Y. Kawasaki, Y. Mizuguchi, K. Deguchi, T. Watanabe, T. Ozaki, S. Tsuda, T. Yamaguchi, H. Takeya, and Y. Takano, arXiv:1101.0896, 2011
62. J. J. Ying, X. F. Wang, X. G. Luo, Z. Y. Li, Y. J. Yan, M. Zhang, A. F. Wang, P. Cheng, G. J. Ye, Z. J. Xiang, R. H. Liu, and X. H. Chen, *New J. Phys.*, 2011, 13(3): 033008
63. G. Seyfarth, D. Jaccard, P. Pedrazzini, A. Krzton-Maziopa, E. Pomjakushina, K. Conder, and Z. Shermadini, arXiv:1102.2464, 2011
64. H. Lei, M. Abeykoon, E. S. Bozin, K. Wang, J. B. Warren, and C. Petrovic, *Phys. Rev. Lett.*, 2011, 107(13): 137002
65. X. G. Luo, X. F. Wang, J. J. Ying, Y. J. Yan, Z. Y. Li, M. Zhang, A. F. Wang, P. Cheng, Z. J. Xiang, G. J. Ye, R. H. Liu, and X. H. Chen, arXiv:1101.5670, 2011
66. W. Bao, G. N. Li, Q. Huang, G. F. Chen, J. B. He, M. A. Green, Y. Qiu, D. M. Wang, and J. L. Luo, arXiv:1102.3674, 2011
67. Z. Wang, Y. J. Song, H. L. Shi, Z. W. Wang, Z. Chen, H. F. Tian, G. F. Chen, J. G. Guo, H. X. Yang, and J. Q. Li, *Phys. Rev. B*, 2011, 83(14): 140505(R)
68. J. Q. Li, Y. J. Song, H. X. Yang, Z. Wang, H. L. Shi, G. F. Chen, Z. W. Wang, Z. Chen, and H. F. Tian, arXiv:1104.5340, 2011
69. Y. J. Song, Z. Wang, Z. W. Wang, H. L. Shi, Z. Chen, H. F. Tian, G. F. Chen, H. X. Yang, and J. Q. Li, *Europhys. Lett.*, 2011, 95(3): 37007
70. S. M. Kazakov, A. M. Abakumov, S. González, J. M. Perez-Mato, A. V. Ovchinnikov, M. V. Roslova, A. I. Boltalin, I. V. Morozov, E. V. Antipov, and G. van Tendeloo, arXiv:1110.0598, 2011
71. F. Ye, S. Chi, W. Bao, X. F. Wang, J. J. Ying, X. H. Chen, H. D. Wang, C. H. Dong, and M. Fang, *Phys. Rev. Lett.*, 2011, 107(13): 137003
72. V. Yu. Pomjakushin, E. V. Pomjakushina, A. Krzton-Maziopa, K. Conder, and Z. Shermadini, *J. Phys.: Condens. Matter*, 2011, 23(15): 156003
73. V. Yu. Pomjakushin, D. V. Sheptyakov, E. Pomjakushina, A. Krzton-Maziopa, K. Conder, D. Chernyshov, V. Svitlyk, and Z. Shermadini, *Phys. Rev. B*, 2011, 83(14): 144410
74. P. Zavalij, W. Bao, X. Wang, J. Ying, X. Chen, D. Wang, J. He, X. Wang, G. Chen, P. Y. Hsieh, Q. Huang, and M. Green, *Phys. Rev. B*, 2011, 83(13): 132509
75. J. Bacsá, A. Y. Ganin, Y. Takabayashi, K. E. Christensen, K. Prassides, M. J. Rosseinsky, and J. B. Claridge, *Chem. Sci.*, 2011, 2(6): 1054
76. W. Li, H. Ding, P. Deng, K. Chang, C. L. Song, K. He, L. L. Wang, X. C. Ma, J. P. Hu, X. Chen, and Q. K. Xue, arXiv:1108.0069, 2011
77. P. Cai, C. Ye, W. Ruan, X. D. Zhou, A. F. Wang, M. Zhang, X. H. Chen, and Y. Y. Wang, arXiv:1108.2798, 2011
78. H. Lei and C. Petrovic, *Phys. Rev. B*, 2011, 83(18): 184504
79. A. Ricci, N. Poccia, B. Joseph, G. Arrighetti, L. Barba, J. Plaisier, G. Campi, Y. Mizuguchi, H. Takeya, Y. Takano, N. L. Saini, and A. Bianconi, *Supercond. Sci. Technol.*, 2011, 24(8): 082002
80. A. Ricci, N. Poccia, G. Campi, B. Joseph, G. Arrighetti, L. Barba, M. Reynolds, M. Burghammer, H. Takeya, Y. Mizuguchi, Y. Takano, M. Colapietro, N. L. Saini, and A. Bianconi, *Phys. Rev. B*, 2011, 84: 060511(R)
81. C. de la Cruz, Q. Huang, J. W. Lynn, J. Li, J. L. Ratcliff, H. A. Zarestky, G. F. Mook, J. L. Chen, N. L. Luo, Wang, and P. Dai, *Nature*, 2008, 453(7197): 899
82. Q. Huang, Y. Qiu, W. Bao, M. A. Green, J. W. Lynn, Y. C. Gasparovic, T. Wu, G. Wu, and X. H. Chen, *Phys. Rev. Lett.*, 2008, 101(25): 257003
83. S. L. Li, C. de la Cruz, Q. Huang, G. F. Chen, T. L. Xia, J. L. Luo, N. L. Wang, and P. Dai, *Phys. Rev. B*, 2009, 80(2): 020504(R)
84. W. Bao, Y. Qiu, Q. Huang, M. A. Green, P. Zajdel, M. R. Fitzsimmons, M. Zhernenkov, S. Chang, M. Fang, B. Qian, E. K. Vehstedt, J. Yang, H. M. Pham, L. Spinu, and Z. Q. Mao, *Phys. Rev. Lett.*, 2009, 102(24): 247001
85. M. D. Lumsden and A. D. Christianson, *J. Phys.: Condens. Matter*, 2010, 22(20): 203203
86. X. Y. Yan, M. Gao, Z. Y. Lu, and T. Xiang, *Phys. Rev. B*, 2011, 84(5): 054502
87. C. Cao and J. Dai, *Phys. Rev. Lett.*, 2011, 107(5): 056401
88. X. Y. Yan, M. Gao, Z. Y. Lu, and T. Xiang, *Phys. Rev. B*, 2011, 83(23): 233205
89. R. Yu, P. Goswami, and Q. Si, *Phys. Rev. B*, 2011, 84(9): 094451
90. W. C. Lv, W. C. Lee, and P. Phillips, arXiv:1105.0432, 2011
91. X. W. Yan, M. Gao, Z. Y. Lu, and T. Xiang, *Phys. Rev. Lett.*, 2011, 106(8): 087005
92. Z. Shermadini, A. Krzton-Maziopa, M. Bendele, R. Khasanov, H. Luetkens, K. Conder, E. Pomjakushina, S.

- Weyeneth, V. Pomjakushin, O. Bossen, and A. Amato, *Phys. Rev. Lett.*, 2011, 106(11): 117602
93. D. H. Ryan, W. Rowan-Weetaluktuk, J. Cadogan, R. Hu, W. Straszheim, S. Bud'ko, and P. Canfield, *Phys. Rev. B*, 2011, 83(10): 104526
 94. A. M. Zhang, J. H. Xiao, Y. S. Li, J. B. He, D. M. Wang, G. F. Chen, B. Normand, Q. M. Zhang, and T. Xiang, arxiv:1106.2706, 2011
 95. V. Ksenofontov, G. Wortmann, S. Medvedev, V. Tsurkan, J. Deisenhofer, A. Loidl, and C. Felser, arXiv:1108.3006, 2011
 96. W. Li, S. Dong, C. Fang, and J. P. Hu, arXiv:1110.0372, 2011
 97. M. Y. Wang, C. Fang, D. X. Yao, G. T. Tan, L. W. Harriger, Y. Song, T. Netherton, C. L. Zhang, M. Wang, M. B. Stone, W. Tian, J. P. Hu, and P. Dai, arXiv:1105.4675, 2011
 98. Y. Z. You, H. Yao, and D. H. Lee, *Phys. Rev. B*, 2011, 84(2): 020406(R)
 99. O. J. Lipscombe, G. F. Chen, C. Fang, T. G. Perring, D. L. Abernathy, A. D. Christianson, T. Egami, N. Wang, J. Hu, and P. Dai, *Phys. Rev. Lett.*, 2011, 106(5): 057004
 100. J. Zhao, D. T. Adroja, D.X. Yao, R. Bewley, S. Li, X. F. Wang, G. Wu, X. H. Chen, J. Hu, and P. Dai, *Nat. Phys.*, 2009, 5(8): 555
 101. J. P. Hu, B. Xu, W. M. Liu, N. N. Hao, and Y. P. Wang, arXiv:1106.5169, 2011
 102. P. Monthoux and D. J. Scalapino, *Phys. Rev. Lett.*, 1994, 72(12): 1874
 103. J. Rossat-Mignod, L. P. Regnault, C. Vettier, P. Bourges, P. Burllet, J. Bossy, J. Y. Henry, and G. Lapertot, *Physica C*, 1991, 185–189: 86
 104. H. A. Mook, M. Yethiraj, G. Aeppli, T. E. Mason, and T. Armstrong, *Phys. Rev. Lett.*, 1993, 70(22): 3490
 105. H. F. Fong, P. Bourges, Y. Sidis, L. P. Regnault, A. Ivanov, G. D. Gu, N. Koshizuka, and B. Keimer, *Nature*, 1999, 398: 588
 106. M. Eschrig, *Adv. Phys.*, 2006, 55(1–2): 47
 107. N. K. Sato, N. Aso, K. Miyake, R. Shiina, P. Thalmeier, G. Varelogiannis, C. Geibel, F. Steglich, P. Fulde, and T. Komatsubara, *Nature*, 2001, 410(6826): 340
 108. C. Stock, C. Broholm, J. Hudis, H. Kang, and C. Petrovic, *Phys. Rev. Lett.*, 2008, 100(8): 87001
 109. J. T. Park, G. Friemel, Yuan Li, J. H. Kim, V. Tsurkan, J. Deisenhofer, H. A. Krug von Nidda, A. Loidl, A. Ivanov, B. Keimer, and D. S. Inosov, arXiv:1107.1703, 2011
 110. T. A. Maier, S. Graser, P. J. Hirschfeld, and D. J. Scalapino, *Phys. Rev. B*, 2011, 83(10): 100515(R)
 111. T. Das and A. Balatsky, *Phys. Rev. B*, 2011, 84(1): 014521
 112. D. S. Inosov, J. Park, A. Charnukha, Y. Li, A. Boris, B. Keimer, and V. Hinkov, *Phys. Rev. B*, 2011, 83(21): 214520
 113. G. Yu, Y. Li, E. M. Motoyama, and M. Greven, *Nat. Phys.*, 2009, 5(12): 873
 114. T. Imai, K. Ahilan, F. L. Ning, T. M. McQueen, and R. J. Cava, *Phys. Rev. Lett.*, 2009, 102(17): 177005
 115. F. L. Ning, K. Ahilan, T. Imai, A. S. Sefat, M. A. McGuire, B. C. Sales, D. Mandrus, P. Cheng, B. Shen, and H. H. Wen, *Phys. Rev. Lett.*, 2010, 104(3): 037001
 116. W. Yu, L. Ma, J. B. He, D. M. Wang, T. L. Xia, G. F. Chen, and W. Bao, *Phys. Rev. Lett.*, 2011, 106(19): 197001
 117. D. A. Torchetti, M. Fu, D. Christensen, K. Nelson, T. Imai, H. Lei, and C. Petrovic, *Phys. Rev. B*, 2011, 83(10): 104508
 118. H. Kotegawa, Y. Hara, H. Nohara, H. Tou, Y. Mizuguchi, H. Takeya, and Y. Takano, *J. Phys. Soc. Jpn.*, 2011, 80(4): 043708
 119. L. Ma, G. Ji, J. Zhang, J. He, D. Wang, G. Chen, W. Bao, and W. Yu, *Phys. Rev. B*, 2011, 83(17): 174510
 120. I. R. Shein and A. L. Ivanovskii, *Phys. Lett. A*, 2011, 375(6): 1028
 121. C. Cao and J. H. Dai, *Chin. Phys. Lett.*, 2011, 28(5): 057402
 122. I. A. Nekrasov and M. V. Sadovskii, *JETP Lett.*, 2011, 93(3): 166
 123. C. Cao and J. Dai, *Phys. Rev. B*, 2011, 83(19): 193104
 124. R. Yu, J. X. Zhu, and Q. Si, *Phys. Rev. Lett.*, 2011, 106(18): 186401
 125. Y. Zhou, D. H. Xu, F. C. Zhang, and W. Q. Chen, *Europhys. Lett.*, 2011, 95(1): 17003
 126. L. Craco, M. S. Laad, and S. Leoni, arXiv:1109.0116, 2011
 127. F. Chen, M. Xu, Q. Q. Ge, Y. Zhang, Z. R. Ye, L. X. Yang, Juan Jiang, B. P. Xie, R. C. Che, M. Zhang, A. F. Wang, X. H. Chen, D. W. Shen, X. M. Xie, M. H. Jiang, J. P. Hu, and D. L. Feng, arXiv:1106.3026, 2011
 128. D. Mou, X. J. Zhou, et al., unpublished data
 129. H. Y. Liu, G. F. Chen, W. Zhang, L. Zhao, G. Liu, T. L. Xia, X. Jia, D. Mu, S. Liu, S. He, Y. Peng, J. He, Z. Chen, X. Dong, J. Zhang, G. Wang, Y. Zhu, Z. Xu, C. Chen, and X. J. Zhou, *Phys. Rev. Lett.*, 2010, 105(2): 027001
 130. Y. Xia, D. Qian, L. Wray, D. Hsieh, G. F. Chen, J. L. Luo, N. L. Wang, and M. Z. Hasan, *Phys. Rev. Lett.*, 2009, 103(3): 037002
 131. The superconducting gap size listed in Table 4 was obtained in ARPES by either fitting the symmetrized EDCs using the phenomenological formula as proposed in: M. R. Norman *et al.*, *Phys. Rev. B*, 1998, 57: R11093, or picking up the peak position. We found that, when the signal is weak and the selected energy window is large to cover the overall peak, the gap value from the fitting procedure tends to be (2~3) meV larger than that obtained directly from the peak position [48]. The gap size difference in Table IV needs to take into account such different ways of determining the gap size.
 132. B. Zeng, B. Shen, G. F. Chen, J. B. He, D. M. Wang, C. H. Li, and H. H. Wen, *Phys. Rev. B*, 2011, 83(14): 144511
 133. F. Wang, F. Yang, M. Gao, Z. Y. Lu, T. Xiang, and D. H. Lee, *Europhys. Lett.*, 2011, 93(5): 57003
 134. R. Yu, P. Goswami, Q. Si, P. Nikolic, and J. X. Zhu, arXiv:1103.3259, 2011
 135. C. Fang, Y. L. Wu, R. Thomale, B. Bernevig, and J. P. Hu, *Phys. Rev. X*, 2011, 1(1): 011009
 136. T. Saito, S. Onari, and H. Kontani, *Phys. Rev. B*, 2011, 83(14): 140512(R)
 137. I. I. Mazin, arXiv:1102.3655, 2011
 138. A. Damascelli, Z. Hussain, and Z. X. Shen, *Rev. Mod. Phys.*, 2006, 75(2): 473
 139. X. J. Zhou, *et al.*, *Handbook of High-Temperature Superconductivity: Theory and Experiment*, edited by J. R. Schrieffer, Springer, 2007: 87–144
 140. A. M. Zhang, K. Liu, J. H. Xiao, J. B. He, D. M. Wang, G. F. Chen, B. Normand, and Q. M. Zhang, arxiv:1101.2168, 2011
 141. A. M. Zhang, K. Liu, J. H. Xiao, J. B. He, D. M. Wang, G. F. Chen, B. Normand, and Q. M. Zhang, arxiv:1105.1198, 2011
 142. Z. G. Chen, R. H. Yuan, T. Dong, G. Xu, Y. G. Shi, P. Zheng, J. L. Luo, J. G. Guo, X. L. Chen, and N. L. Wang, *Phys. Rev. B*, 2011, 83(22): 220507(R)