

Figure S1. Survival analysis comparing patients with follicular lymphoma (FL) and non-follicular lymphoma (non-FL). (A) Progression-free survival (PFS) in patients with FL versus non-FL. (B) Overall survival (OS) in patients with FL versus non-FL. (C) PFS across patients with different subtypes of non-FL. (D) OS across patients with different subtypes of non-FL.

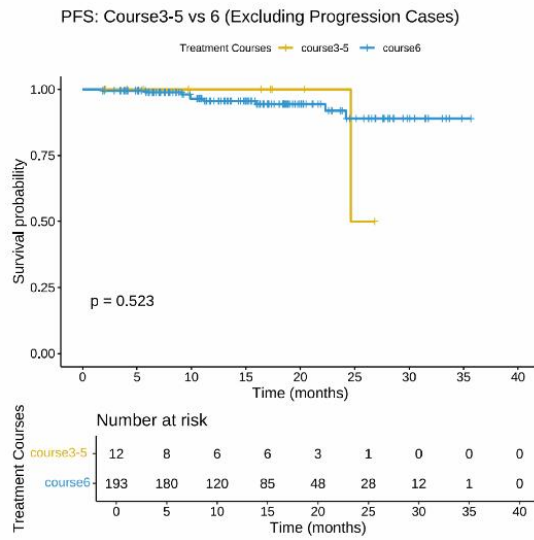
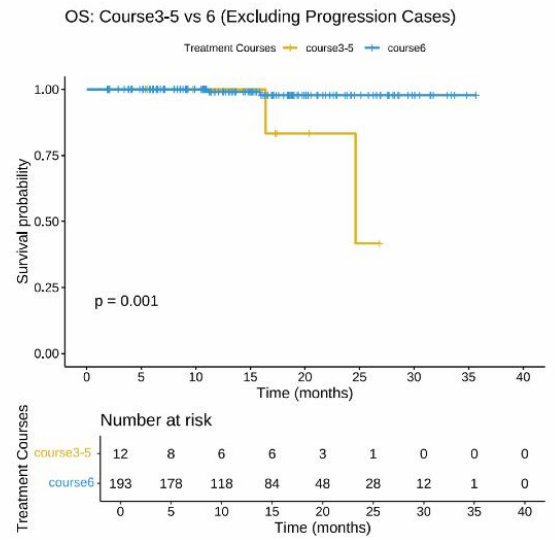
**A****B**

Figure S2. Survival curve according to treatment courses. (A) Progression-free survival and (B) Overall survival.

Table S1. Baseline characteristics of patients with FL and non-FL.

Characteristic	Overall (n=220)	FL (n=149)	non-FL (n=71)	P value
Gender (n, %)				0.097
Female	103 (46.8)	76 (51.0)	27 (38.0)	
Male	117 (53.2)	73 (49.0)	44 (62.0)	
Age	54.61 (11.6)	52.51 (11.5)	59.03 (10.6)	<0.00 1
ECOG (n, %)				0.649
0	142 (68.9)	92 (67.2)	50 (72.5)	
1	59 (28.6)	42 (30.7)	17 (24.6)	
2	5 (2.4)	3 (2.2)	2 (2.9)	
Splenomegaly (n, %)				<0.00 1
No	113 (55.1)	91 (67.4)	22 (31.4)	
Yes	92 (44.9)	44 (32.6)	48 (68.6)	
Hepatomegaly (n, %)				0.002
No	86 (55.8)	66 (65.3)	20 (37.7)	
Yes	68 (44.2)	35 (34.7)	33 (62.3)	
Leukocyte (10 <sup>9</sup> /L)	6.2 (4.2, 8.6)	6.0 (4.2, 8.6)	6.9 (4.2, 8.6)	0.688
Neutrophils (10 <sup>9</sup> /L)	3.3 (2.4, 4.6)	3.3 (2.4, 4.5)	3.4 (2.3, 4.7)	0.878
Hemoglobin (g/L)	131.0 (115.0, 143.5)	131.0(117.0,14 3.0)	131.0 (112.0, 146.8)	0.782
Platelet (10 <sup>9</sup> /L)	183.7 (74.3)	201.2 (67.1)	147.0 (75.6)	<0.00 1
Lymphocyte (10 <sup>9</sup> /L)	1.5 (0.9, 2.6)	1.4 (0.8, 2.5)	1.8 (1.0, 3.0)	0.094
β2-MG (mg/L)	2.7 (2.0, 4.0)	2.3 (1.9, 3.3)	3.7 (2.8, 4.9)	<0.00 1
ALB (g/L)	43.5 (40.4, 45.5)	44.0 (41.0, 45.7)	42.6 (37.9, 44.6)	<0.00 1
GLO (g/L)	27.4 (24.3, 32.0)	27.2 (24.2, 30.2)	28.3 (24.4, 37.0)	0.039
Cre (umol/L)	68.2 (56.8, 77.7)	66.0 (56.9, 76.9)	71.7 (56.5, 79.6)	0.175
LDH (U/L)	196.6 (160.9, 237.8)	188.4 (159.1, 219.9)	217.3 (164.3, 278.8)	0.003
bone marrow involvement				<0.00 1
Yes	94(51.1)	44(36.7)	50(78.1)	
No	90(48.9)	76(63.3)	14(21.9)	
Courses of GB (n, %)				0.046
1	5 (2.3)	2 (1.4)	3 (4.3)	
2	3 (1.4)	1 (0.7)	2 (2.9)	
3	6 (2.8)	2 (1.4)	4 (5.7)	
4	6 (2.8)	2 (1.4)	4 (5.7)	
5	5 (2.3)	3 (2.0)	2 (2.9)	

---

6	193 (88.5)	138 (93.2)	55 (78.6)
---	------------	------------	-----------

---

FL: follicular lymphoma; non-FL: non follicular lymphoma; ECOG: Eastern Cooperative Oncology Group performance status;  $\beta$ 2-MG: $\beta$ 2-microglobulin; ALB: albumin; GLO: globulin; Cre: creatinine; LDH: lactic dehydrogenase; GB: obinutuzumab-bendamustine

Table S2. Summary of overall response of patients with FL and non-FL following completion of induction therapy.

	All	FL	Non-FL	<i>P</i>
ORR	201 (96.6) 0.942-0.991	140 (96.6) 0.935-0.996	61 (96.8) 0.924-100.0	1.000
CR	185 (88.9) 0.846-0.932	134(92.4) 0.881-0.968	51(81.0) 0.710-0.909	0.015
PR	16 (7.6) 0.040-0.113	6(4.1) 0.009-0.074	10(15.8) 0.066-0.252	0.008
SD	4 (1.8%) 0.000-0.038	3(2.1%) 0.000-0.044	1(1.6%) 0.000-0.048	1.000
PD	3(1.4%) 0.000-0.031	2(1.4%) 0.000-0.107	1(1.6%) 0.000-0.048	1.000

Table S3. Summary of overall response following completion of induction therapy (intention-to-treat population)

	All(n=220)	FL(n=149)	Non-FL(n=71)	<i>P</i>
ORR	203(92.3) 0.887-0.958	140 (94.0) 0.901-0.978	63(88.7) 0.812-0.963	0.175
CR	185 (84.1) 0.792-0.890	134(89.9) 0.850-0.948	51(71.8) 0.611-0.826	0.001
PR	18 (8.2) 0.045-0.118	6(4.0) 0.008-0.072	12(16.9) 0.080-0.258	0.001
SD	4 (1.8) 0.000-0.036	3(2.0) 0.004-0.058	1(1.4) 0.000-0.076	1.000
PD	3(1.4) 0.003-0.039	2(1.3) 0.002-0.048	1(1.4) 0.000-0.076	1.000

Table S4. Overview of efficacy in different subgroups.

	FL (n=145)	MZL (n=37)	WM (n=14)	HCL-V (n=3)	BCLPD-U (n=9)	<i>P</i>
ORR	140 (96.6) 0.935-0.996	37 (100.0) 1-1	13 (92.9) 0.774-1	3(100.0) 1-1	8 (88.9) 0.633-1	0.280
CR	134(92.4) 0.881-0.968	30 (81.1) 0.678-0.943	11(78.6) 0.540-1	3 (100.0) 1-1	7 (77.8) 0.439-1	0.079
PR	6(4.1) 0.009-0.074	7 (18.9) 0.057-0.322	2(14.3) 0-0.353	0 (0.0) 0-0	1 (11.1) 0-0.367	0.022
SD	3(2.1%) 0.000-0.044	0 (0.0) 0-0	1(7.1%) 0-0.226	0 (0.0) 0-0	0 (0.0) 0-0	0.524
PD	2(1.4%) 0.000-0.107	0 (0.0) 0-0	0 (0.0) 0-0	0 (0.0) 0-0	1(11.1%) 0-0.367	0.238

Table S5. Summary of treatment-emergent adverse events (safety set).

Events (n, %)	Overall (n=220)	Grade $\geq$ 3 AE
Any AE	42 (19.1)	10(4.5)
Infection	22 (10.0)	6 (2.8)
Fever	1 (0.5)	
Herpes zoster	1 (0.5)	
COVID-19	5 (2.3)	
Others	15 (6.8)	
Myelosuppression	12 (5.5)	4 (1.8)
Other AE	8 (3.6)	
Rash	1 (0.5)	
Infusion Reaction	2 (0.9)	
Allergic reaction	3(1.4)	
Hepatic dysfunction	1(0.5)	
Headache	1(0.5)	
Cause Of Death	6 (2.8)	
Cerebral hemorrhage	1 (0.5)	
COVID-19	3 (1.4)	
Infection	1 (0.5)	
Liver failure	1 (0.5)	

Table S6. Treatment-emergent adverse events between patients with FL and non-FL.

Events (n, %)	Overall (n=220)	FL (n=149)	non-FL (n=71)	<i>P</i>
Any AE	42 (19.1)	23 (15.4)	19 (26.8)	0.046
Grade $\geq 3$ AE	10(4.5)	6(4.0)	4(5.6)	1.000
Infection	22 (10.0)	9 (6.0)	13 (18.3)	0.005
Fever	1 (4.5)	0 (0.0)	1 (1.4)	
Herpes zoster	1 (4.5)	0 (0.0)	1 (1.4)	
COVID-19	5 (2.3)	3 (2.0)	2 (2.8)	
Others	15 (6.8)	6(4.0)	9 (12.7)	
Infection Grade				0.105
1	7(3.2)	3(2.0)	4(5.6)	
2	9(4.1)	4(2.7)	5(7.0)	
$\geq 3$	6(2.7)	2(1.3)	4(5.6)	
Myelosuppression				0.062
1	7 (3.2)	2 (1.3)	5 (7.0)	
2	1 (0.5)	1 (0.7)	0 (0.0)	
3	4 (1.8)	4 (2.7)	0 (0.0)	
Other AE Grade				0.121
1	6(2.7)	5(3.4)	1(1.4)	
2	2(0.9)	2(2.7)	0(0.0)	
Cause Of Death				0.087
Cerebral hemorrhage	1 (0.5)	0 (0.0)	1 (1.4)	
COVID-19	3(1.4)	2 (1.3)	1 (1.4)	
Infection	1 (0.5)	0 (0.0)	1 (1.4)	
Liver failure	1 (0.5)	0 (0.0)	1 (1.4)	

FL: follicular lymphoma; non-FL: non follicular lymphoma; AE: adverse event; COVID-19: Corona Virus Disease 2019

Table S7. Treatment-emergent adverse events in different subgroups.

Events, n (%)	Overall (n=220)	FL (n=149)	MZL (n=40)	WM (n=16)	HCL-V (n=3)	BCLPD-U (n=12)	<i>P</i>
Any AE	42 (19.1)	23(15.4)	12(30.0)	3(18.8)	2(66.7)	2(16.7)	0.066
Grade $\geq$ 3 AE	10 (4.5)	6 (4.0)	2 (5.0)	0 (0.0)	1(33.3)	1 (8.3)	0.178
Infection (%)	22 (10.0)	9 (6.0)	8(20.0)	3 (18.8)	1 (33.3)	1 (8.3)	0.018
Fever	1 (4.5)	0 (0.0)	1 (2.5)	0 (0.0)	0 (0.0)	0 (0.0)	
Herpes Zoster	1 (4.5)	0 (0.0)	1 (2.5)	0 (0.0)	0 (0.0)	0 (0.0)	
Covid-19	5 (2.3)	3 (2.0)	2 (5.0)	0 (0.0)	0 (0.0)	0 (0.0)	
Others	15 (6.8)	6(4.0)	4(10.0)	3(18.8)	1(33.3)	1(8.3)	
Infection Grade							0.032
1	7(3.2)	3(2.0)	3(7.5)	1(6.3)	0 (0.0)	0 (0.0)	
2	9(4.1)	4(2.7)	3(7.5)	2(12.5)	0 (0.0)	0 (0.0)	
$\geq$ 3	6(2.7)	2(1.3)	2(5.0)	0 (0.0)	1(33.3)	1(8.3)	
Myelosuppression (%)							0.073
1	7 (3.2)	2 (1.3)	4 (10.0)	0 (0.0)	1 (33.3)	0 (0.0)	
2	1 (0.5)	1 (0.7)	0 (0.0)	0 (0.0)	0 (0.0)	0 (0.0)	
3	4 (1.8)	4 (2.7)	0 (0.0)	0 (0.0)	0 (0.0)	0 (0.0)	
Other AE Grade							0.108
1	6(2.7)	5(3.4)	0(0.0)	0(0.0)	0(0.0)	1 (8.3)	
2	2(0.9)	2(2.7)	0(0.0)	0(0.0)	0(0.0)	0 (0.0)	

Table S8. Treatment-emergent adverse events across different treatment cycles.

Events, n (%)	Overall	≤2	3	4	5	≥6	<i>P</i>
Any AE	42(100.0)	20(47.6)	4(9.5)	8(19.0)	4(9.5)	6(14.4)	<0.001
Infection	22(52.4)	8(19.0)	3(7.1)	3(7.1)	2(9.1)	6(14.4)	1.000
Myelosuppression	12(28.6)	9(21.4)	1(2.4)	2(4.8)	0(0.0)	0(0.0)	1.000
Other AE	8(19.0)	3(7.1)	0(0.0)	3(7.1)	2(4.8)	0(0.0)	1.000
Grade							0.089
1	20(47.6)	10(23.8)	1(2.4)	4(9.5)	3(7.1)	2(4.8)	
2	12(28.6)	6(14.3)	3(7.1)	1(2.4)	1(2.4)	1(2.4)	
3	10(23.8)	4(9.5)	0(0.0)	3(7.1)	0(0.0)	3(7.1)	