

Fig. S1 GTF2I mRNA expression in MSCs and MSC-EVs detected by RT-qPCR (left panel) and GTF2I protein expression in MSCs and MSC-EVs upon transduction of sh-GTF2I detected by Western blot analysis (right panel). ** $p < 0.01$, *** $p < 0.001$, and **** $p < 0.0001$. The cell experiment was conducted three times independently.

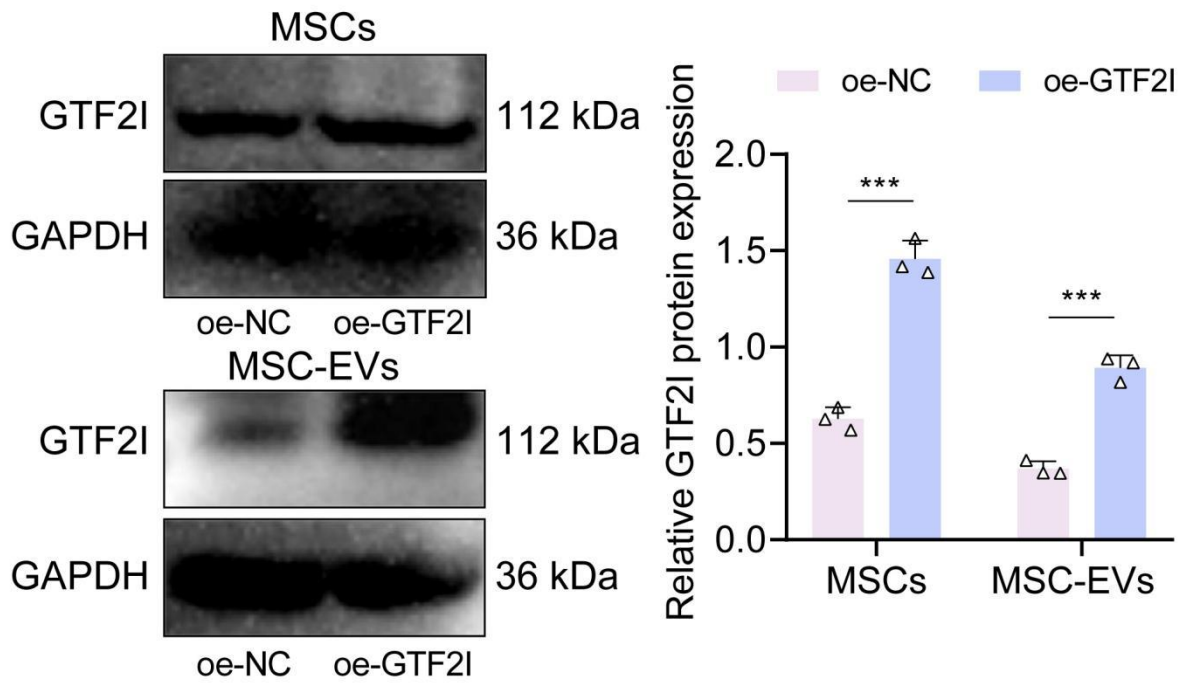


Fig. S2 Western blot analysis of GTF2I protein in MSCs and the MSC-EVs upon transduction of oe-GTF2I. *** $p < 0.001$. The cell experiment was conducted three times independently.