

Table S1 List of primer sequences

Gene	RT-PCR primer sequence	
BEND4	Forward 5'-CAACTCCTGATACCACAGCCA-3' Reverse 5'-CTGACTGCACTGACCTTTTCC-3'	
GAPDH	Forward 5'-GACCACAGTCCATGCCATCAC-3' Reverse 5'-GTCCACCACCCTGTTGCTGTA-3'	
Gene	MSP primer sequence	
BEND4	Unmethylation Forward 5'-GTTTTGTATGAGTTTAGAGGTTGTGATGTTT-3'	
	Unmethylation Reverse 5'-ATTCTTCTACCAATCAAAAATTACTCTCCA-3'	
	Methylation Forward 5'-TCGTATGAGTTTAGAGGTCGCGATGTTC-3'	
	Methylation Reverse 5'-TCTTCTACCAATCGAAAATTACTCTCCG-3'	
Gene	BSSQ primer sequence	
BEND4	Forward 5'-TGGTGTTATGTAYGTTTTYGGG-3' Reverse 5'-ACCCCAAACCTCTCRAAATTACAC-3'	
Gene	sgRNA primer sequence	
BEND4	sgRNA#1 5'-CACCGGCTGCGCCGAGTCCTCAAG-3' sgRNA#2 5'-AAACCTGAGGACTCCGCGCAGC-3'	
Gene	siRNA primer sequence	
BEND4	siRNA#1 Forward 5'-GCACUGUCACAUUGGGAAATT-3' siRNA#1 Reverse 5'-UUUCCCAAUGUGACAGUGCTT-3'	
	siRNA#2 Forward 5'-GCAGUAUAUGCAAAGGAAATT-3' siRNA#2 Reverse 5'-UUUCCUUGCAUAUACUGCTT-3'	
	siRNA#3 Forward 5'-GCUGGAGCAGGAGGUUAUUTT-3' siRNA#3 Reverse 5'-AAUAACCUCCUGCUCCAGCTT-3'	
	siRNA#1 Forward 5'-GGAUGUGAUUCAACAUGAATT-3' siRNA#1 Reverse 5'-UUCAUGUUGAAUCACAUCCTT-3'	
	Ku80 siRNA#2 Forward 5'-GGUGGCCAUAGUUCGAUAUTT-3' siRNA#2 Reverse 5'-AUAUCGAACUAUGGCCACCTT-3'	
	siRNA#3 Forward 5'-CCUCGAUUUCAGAGAUUAUTT-3'	

siRNA#3 Reverse 5'-AUAUCUCUGAAAUCGAGGTT-3'

Scramble Forward 5'-UUCUCCGAACGUGUCACGUTT-3'
control Reverse 5'-ACGUGACACGUUCGGAGAATT-3'

MSP: methylation specific PCR; BSSQ: bisulfite sequencing; sgRNA: single guide RNA; siRNA: small interfering RNA.

Table S2 List of antibodies

Name	Manufacturer	Cat No.	Antigenicity	Usage
BEND4	Proteintech	24711-1-AP	Rabbit	IP 2 µg WB 1:1000 IHC 1:200
CyclinA2	Proteintech	18202-1-AP	Rabbit	WB 1:10000
CyclinD1	Proteintech	60186-1-Ig	Mouse	WB 1:10000
CyclinE1	Proteintech	11554-1-AP	Rabbit	WB 1:1000
CDK2	Proteintech	10122-1-AP	Rabbit	WB 1:10000
Caspase3	Proteintech	19677-1-AP	Rabbit	WB 1:500
Cleaved-Caspase3	Proteintech	19677-1-AP	Rabbit	WB 1:500
Bcl-2	Proteintech	12789-1-AP	Rabbit	WB 1:2000
BAX	Proteintech	50599-2-Ig	Rabbit	WB 1:2000
MMP2	Proteintech	66366-1-Ig	Mouse	WB 1:1000
MMP7	ZENBIO	820096	Rabbit	WB 1:500
MMP9	Proteintech	10375-2-AP	Rabbit	WB 1:1000
Ku80	Proteintech	10389-1-AP	Rabbit	WB 1:2000
DNAPKcs	ZENBIO	200618-6D1	Mouse	WB 1:1000
p-DNAPKcs (Ser2056)	ZENBIO	380800	Rabbit	WB 1:1000 IHC 1:400
XRCC4	huaxingbio	HX19688	Mouse	WB 1:1000 IHC 1:400
γ-H2AX (Ser139)	Cell Signaling	9718	Rabbit	WB 1:1000
β-actin	Proteintech	66009-1-Ig	Mouse	WB 1:50000
Histone-H3	Proteintech	17168-1-AP	Rabbit	WB 1:10000

IP: immunoprecipitation; WB: Western blotting; IHC: immunohistochemistry.

Supplementary Figures

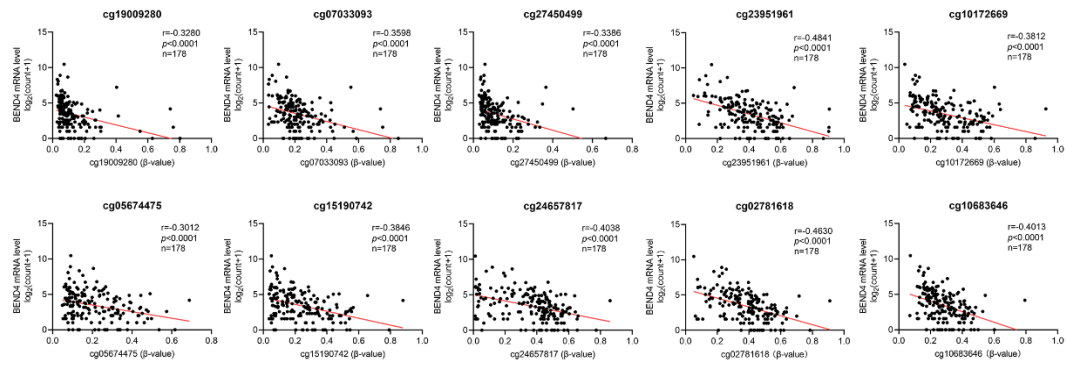


Fig. S1 Scatter plots represent a negative correlation between BEND4 mRNA expression and methylation status of 10 CpG sites in the promoter region of BEND4.

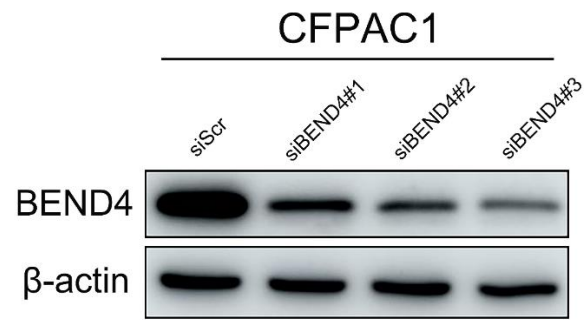


Fig. S2 Western blotting show the knockdown efficiency of siRNA targeting BEND4 in CFPAC1 cells. Scr: scramble control.

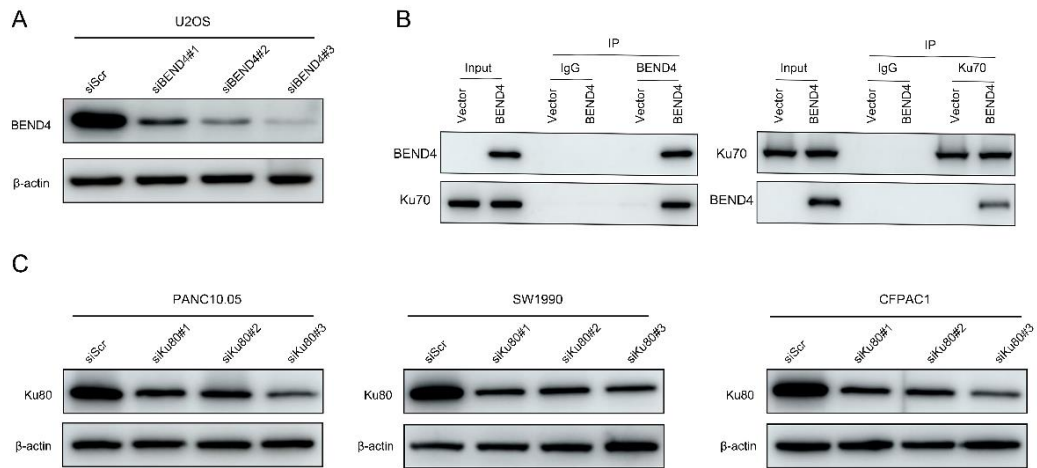


Fig. S3 (A) Western blotting show the knockdown efficiency of siRNA targeting BEND4 in U2OS cells. (B) Validation of the interaction between BEND4 and Ku70 by reciprocal co-IP. (C) Western blotting show the knockdown efficiency of siRNA targeting Ku80 in PDAC cells. Scr: scramble control.

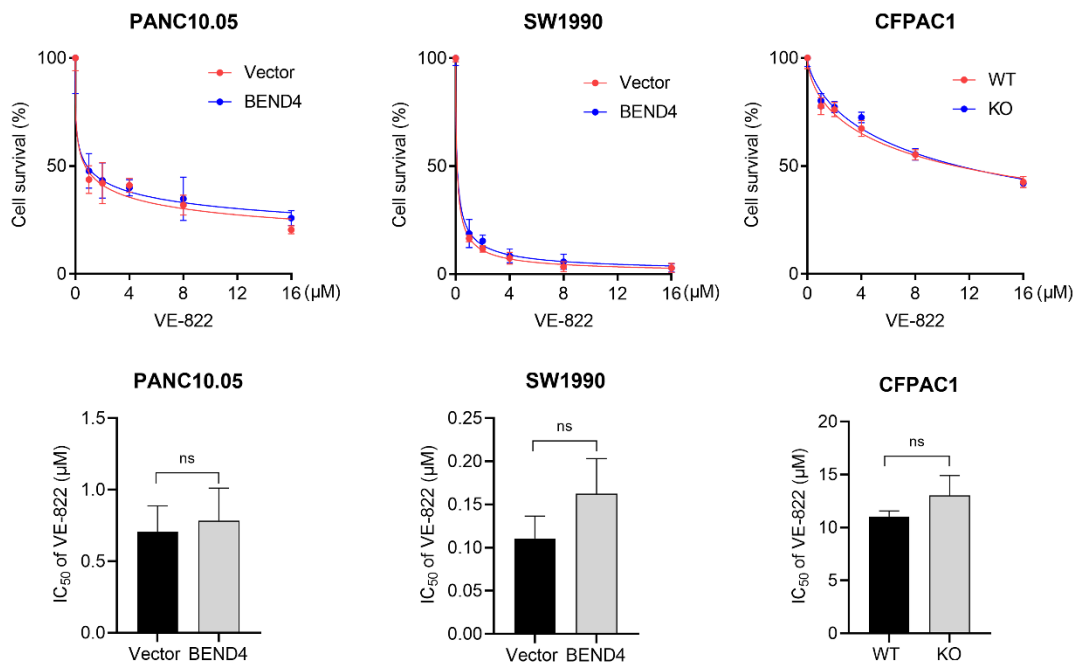


Fig. S4 IC₅₀ of VE-822 in PDAC cells with and without BEND4. The results are presented as the mean ± SD of three replicates. ns, no significance.