

DOI: 10.1007/s11684-016-0436-0

Verso: EBV gene profiling in NPC by RNA-seq

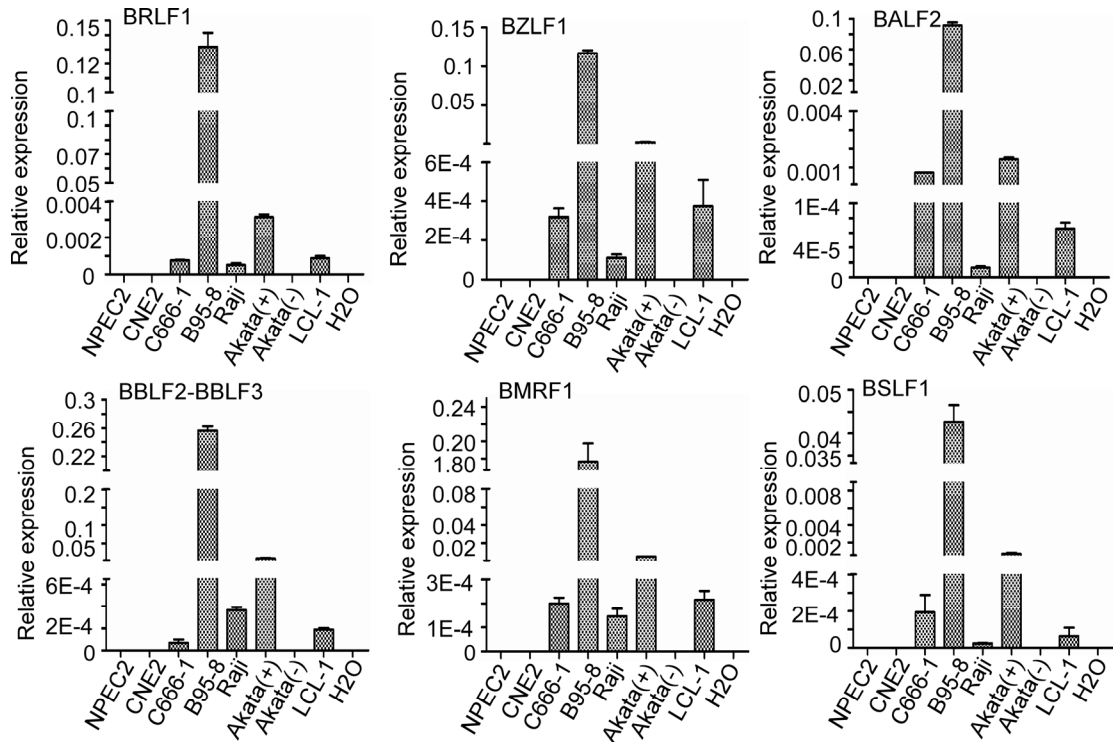
Recto: Lijuan Hu *et al.*

RESEARCH ARTICLE

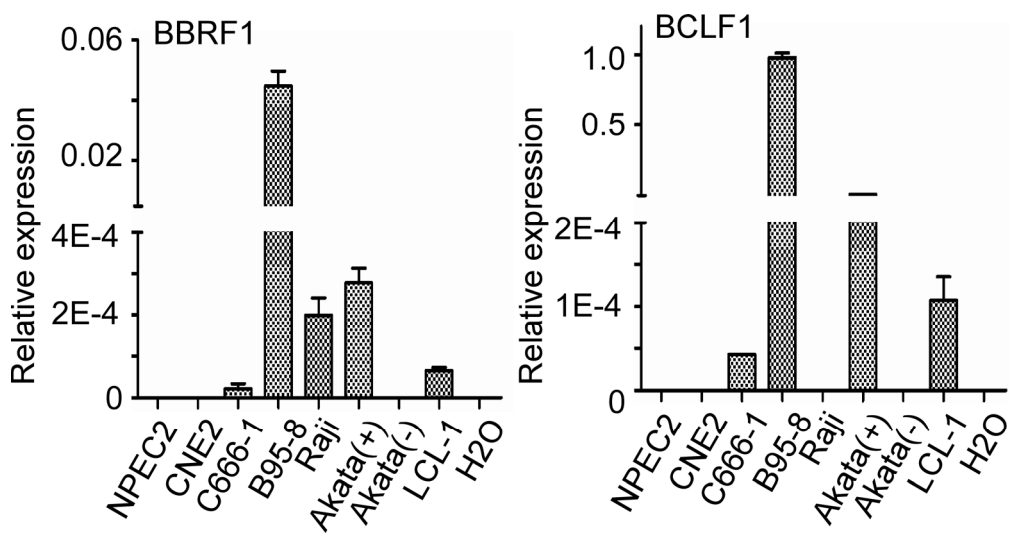
# Comprehensive profiling of EBV gene expression in nasopharyngeal carcinoma through paired-end transcriptome sequencing

Lijuan Hu<sup>1,2,7,\*</sup>, Zhirui Lin<sup>1,2,\*</sup>, Yanheng Wu<sup>3,\*</sup>, Juqin Dong<sup>1,2</sup>, Bo Zhao<sup>5</sup>, Yanbing Cheng<sup>6</sup>, Peiyu Huang<sup>1,4</sup>, Lihua Xu<sup>1,8</sup>, Tianliang Xia<sup>1,2</sup>, Dan Xiong<sup>1,2</sup>, Hongbo Wang<sup>1,2</sup>, Manzhi Li<sup>1,2</sup>, Ling Guo<sup>1,4</sup>, Elliott Kieff<sup>5</sup>, Yixin Zeng<sup>1,2</sup>, Qian Zhong (✉)<sup>1,2,a</sup>, Musheng Zeng (✉)<sup>1,2,b</sup>

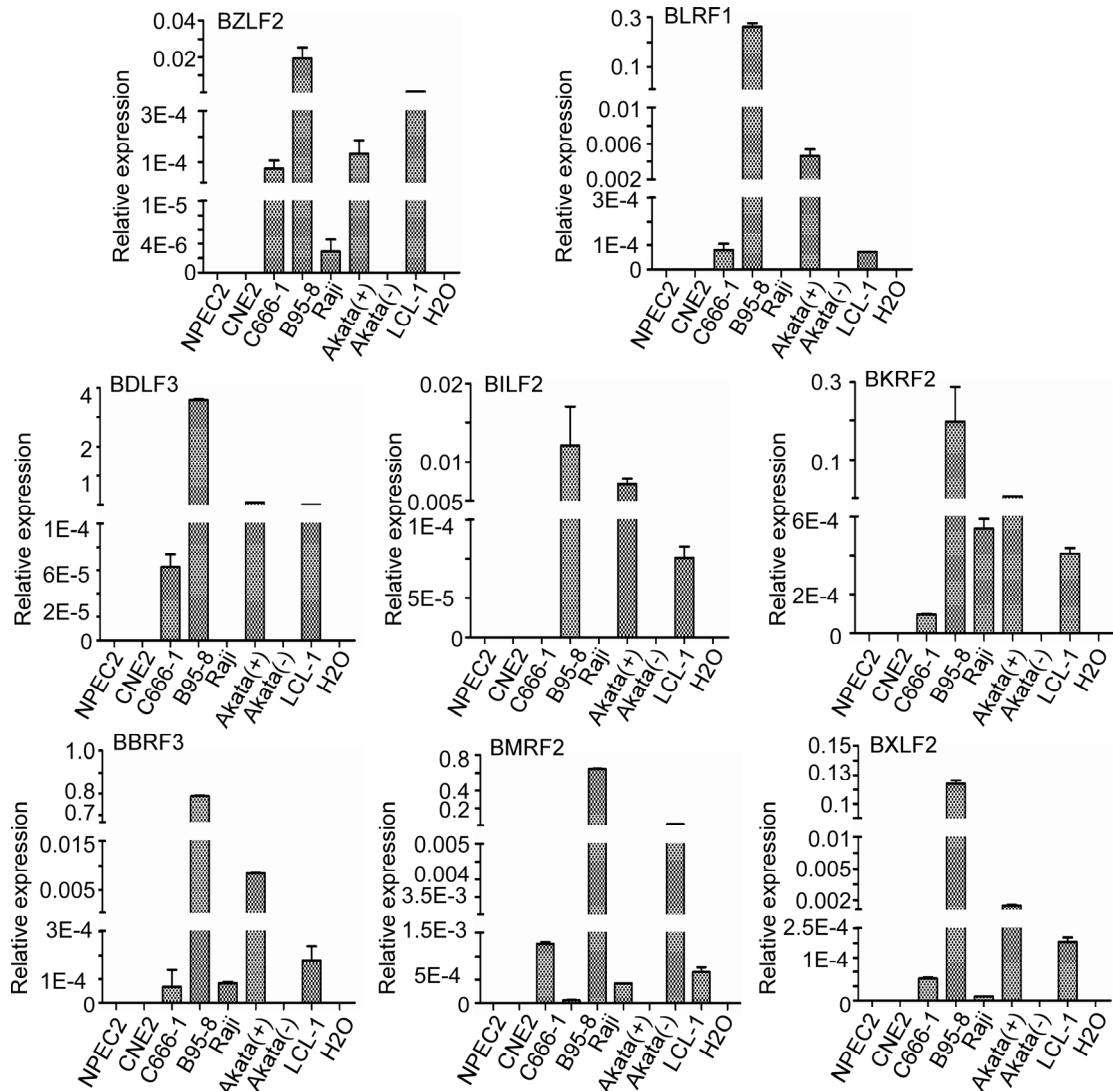
<sup>1</sup>State Key Laboratory of Oncology in South China, Collaborative Innovation Center for Cancer Medicine and  
<sup>2</sup>Department of Experimental Research, Sun Yat-sen University Cancer Center, Guangzhou 510060, China; <sup>3</sup>First Affiliated Hospital of Jinan University, Guangzhou 510630, China; <sup>4</sup>Department of Nasopharyngeal Carcinoma, Sun Yat-sen University Cancer Center, Guangzhou 510060, China; <sup>5</sup>Division of Infectious Disease, Brigham and Women's Hospital and Department of Microbiology and Immunobiology, Harvard Medical School, Boston, MA 02115, USA; <sup>6</sup>Beijing Genomics Institute Co., Ltd., Shenzhen 518083, China; <sup>7</sup>Department of Medical Oncology, Affiliated Tumor Hospital of Guangzhou Medical University, Guangzhou 510095, China; <sup>8</sup>Department of Oncology and Hematology, The First Affiliated Hospital of Guangzhou Medical University, Guangzhou 510120, China



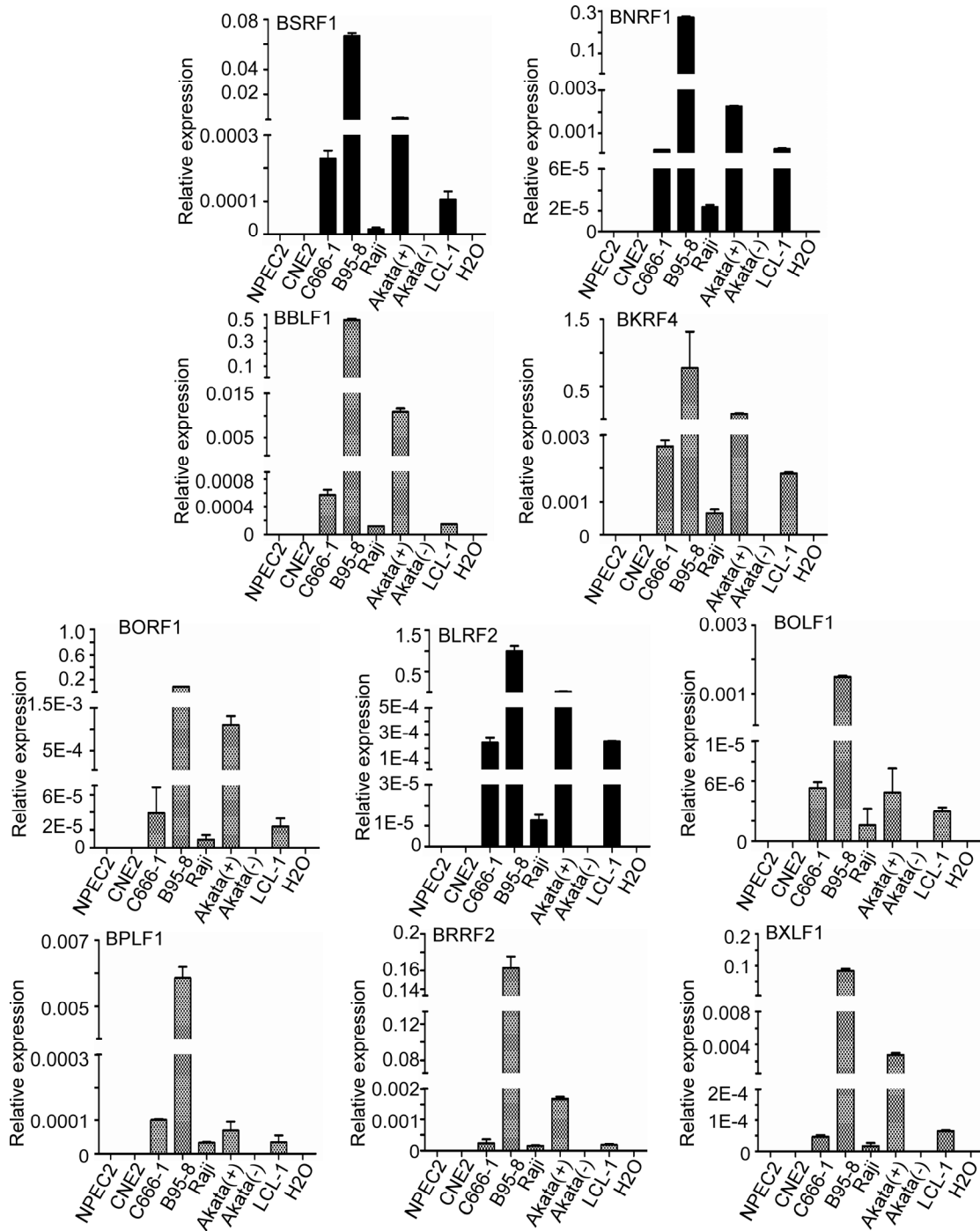
Supplemental Fig.S1



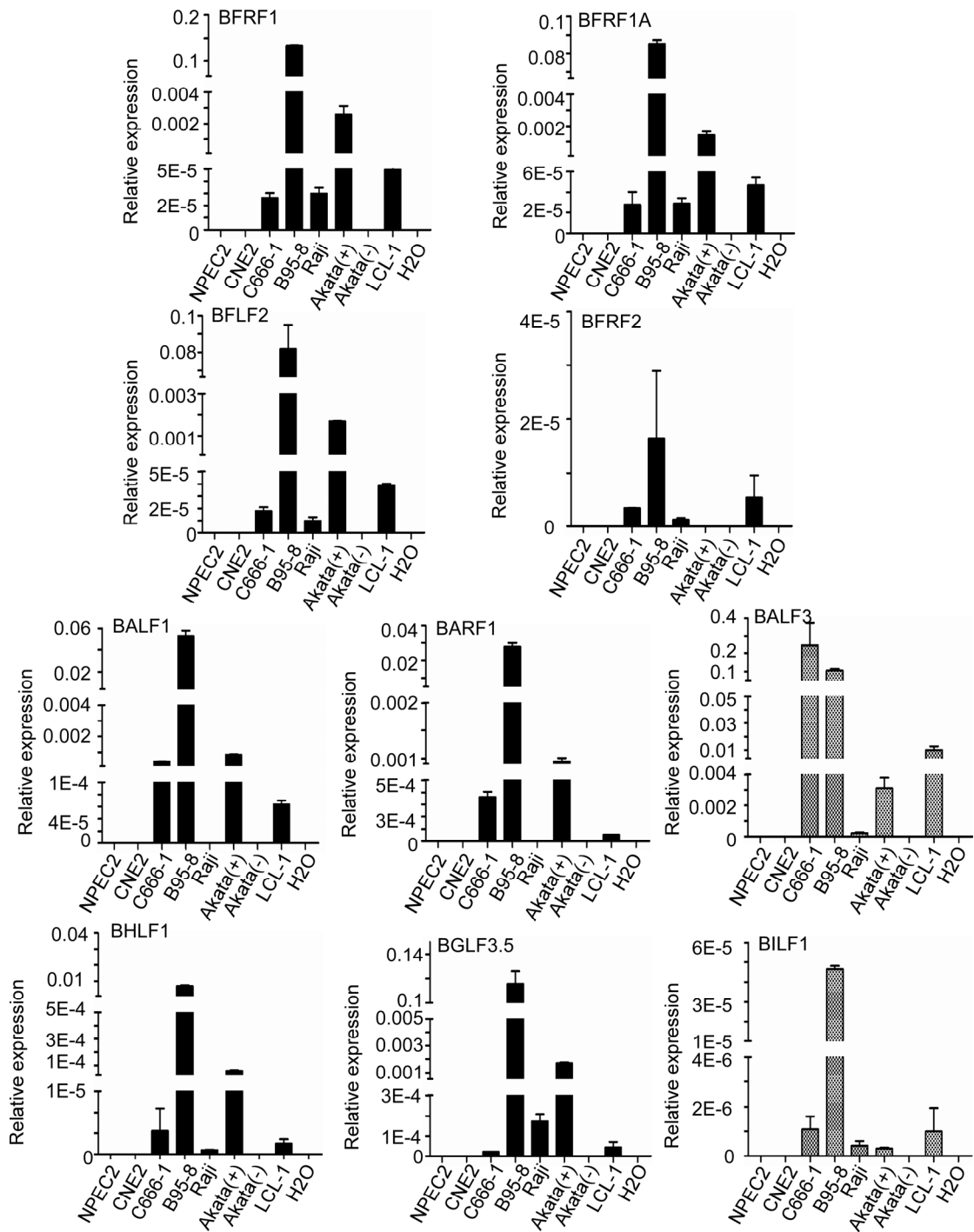
Supplemental Fig.S2



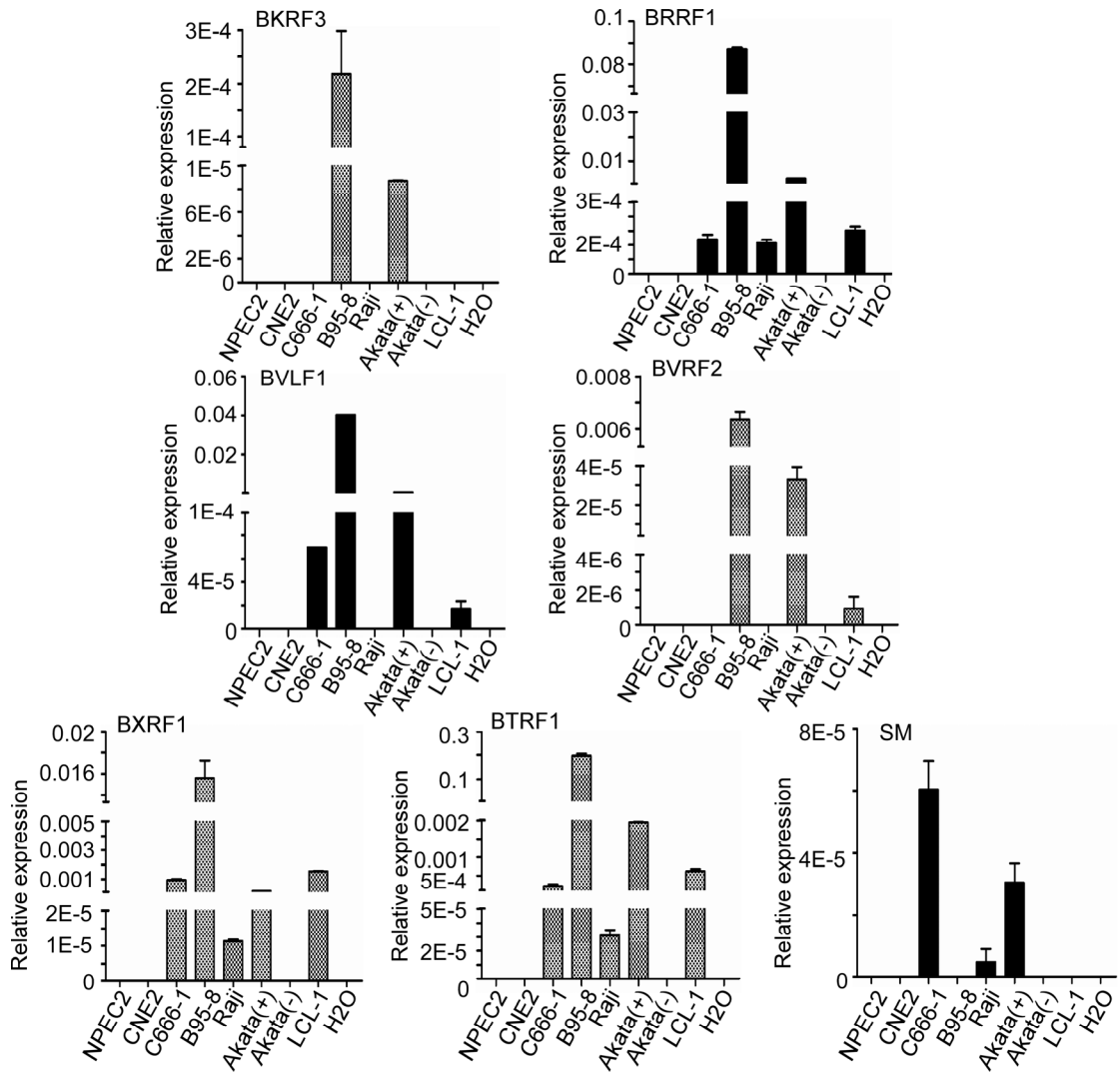
Supplemental Fig.S3



Supplemental Fig.S4

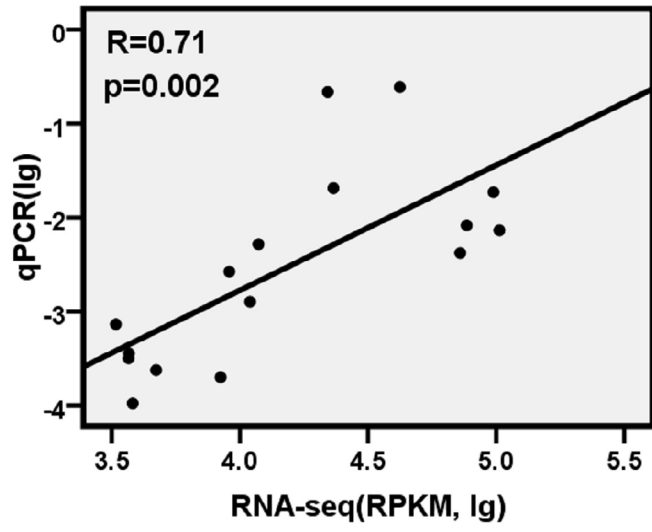


Supplemental Fig.S5

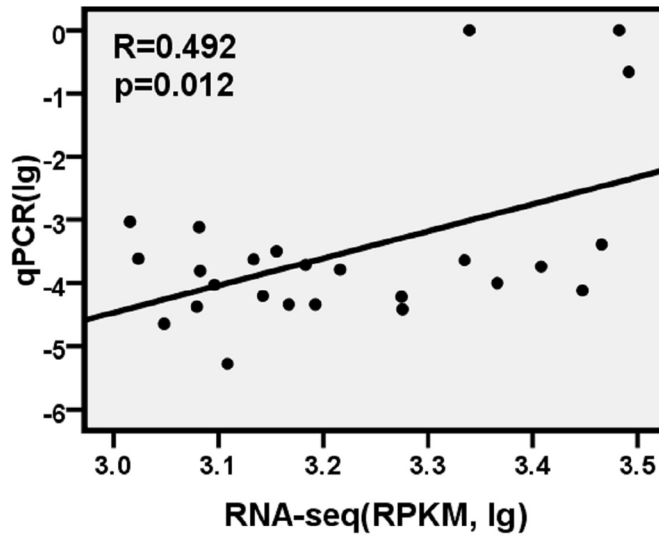


Supplemental Fig.S6

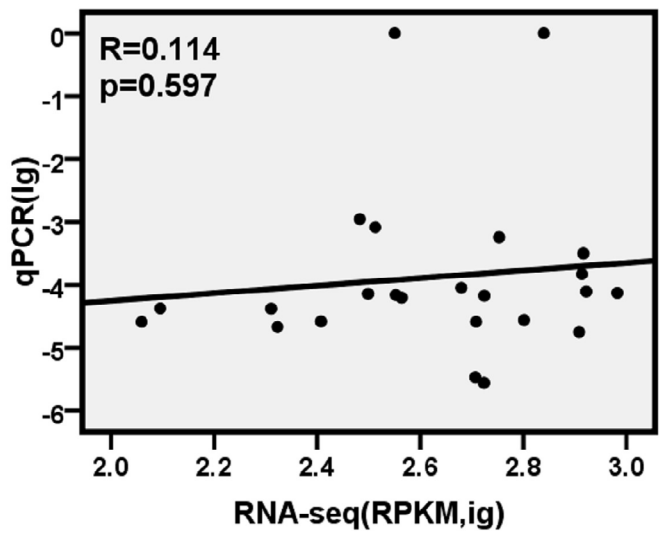
**A**



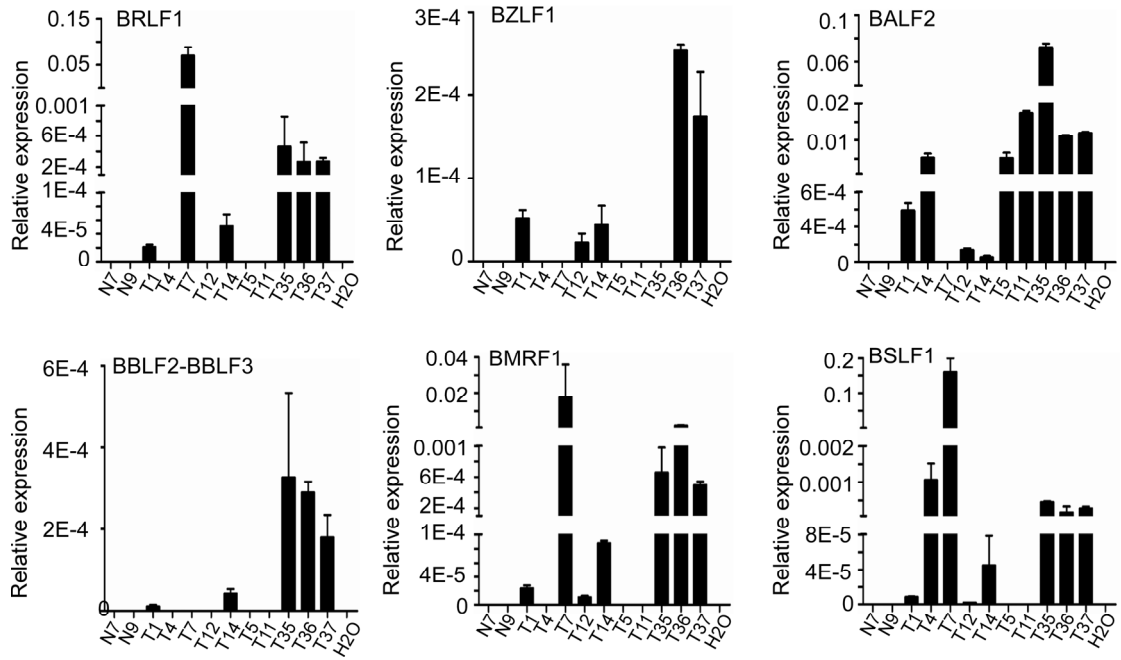
**B**



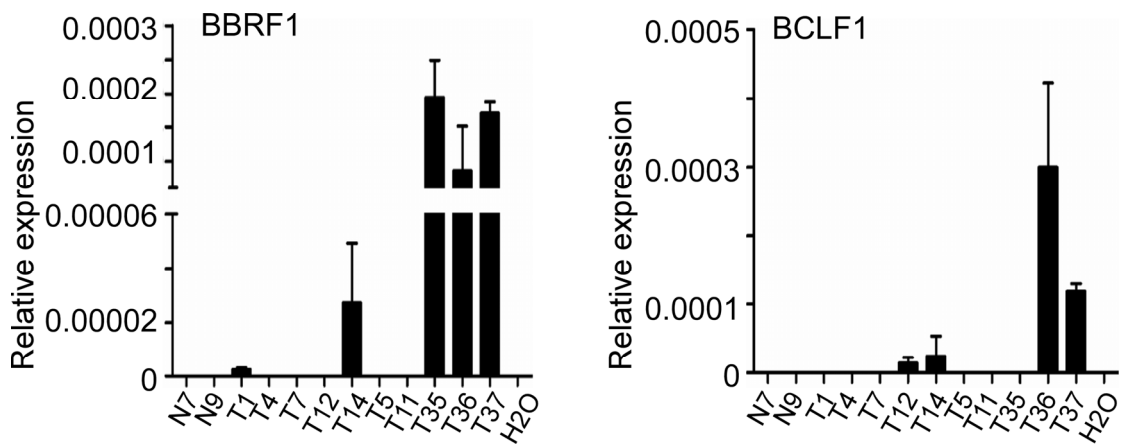
**C**



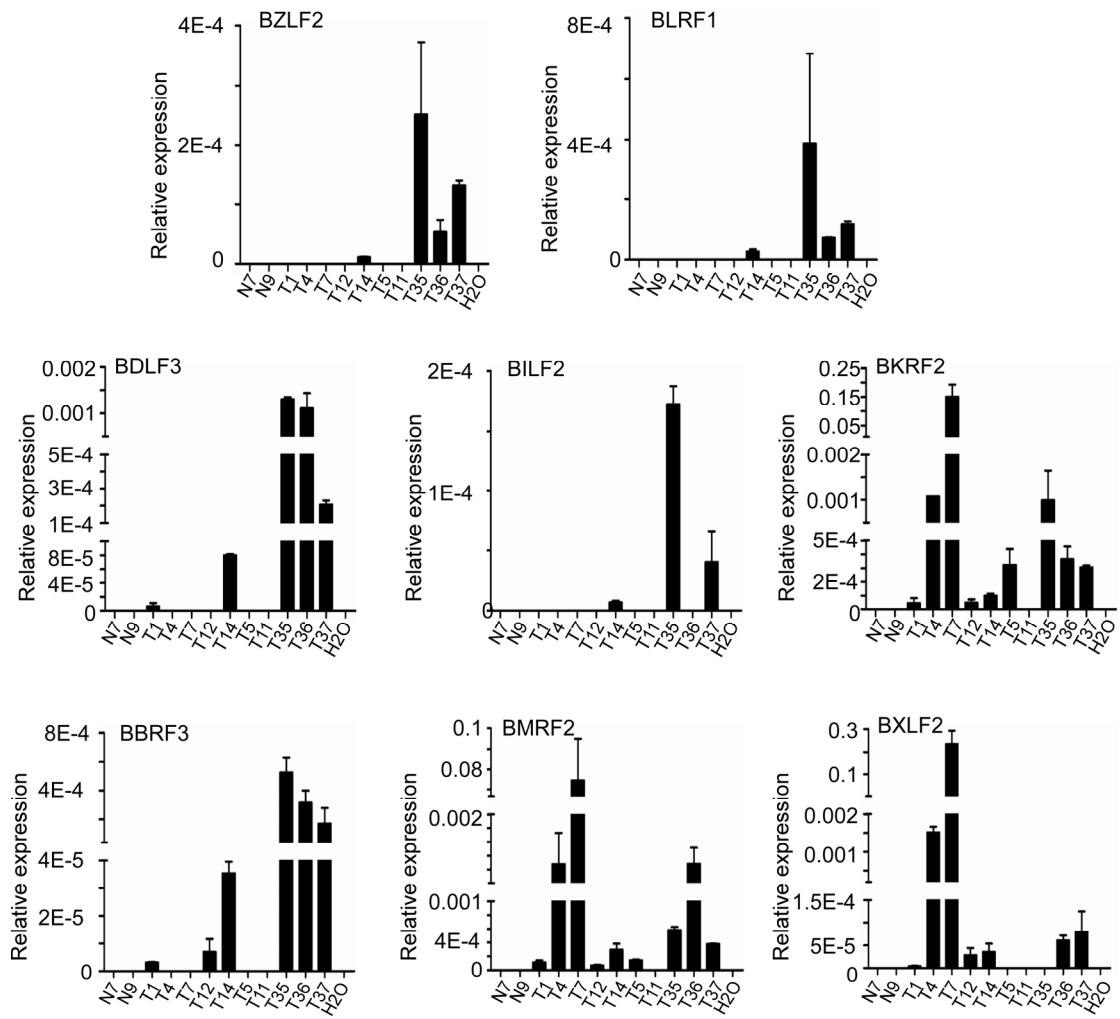
Supplemental Fig.S7



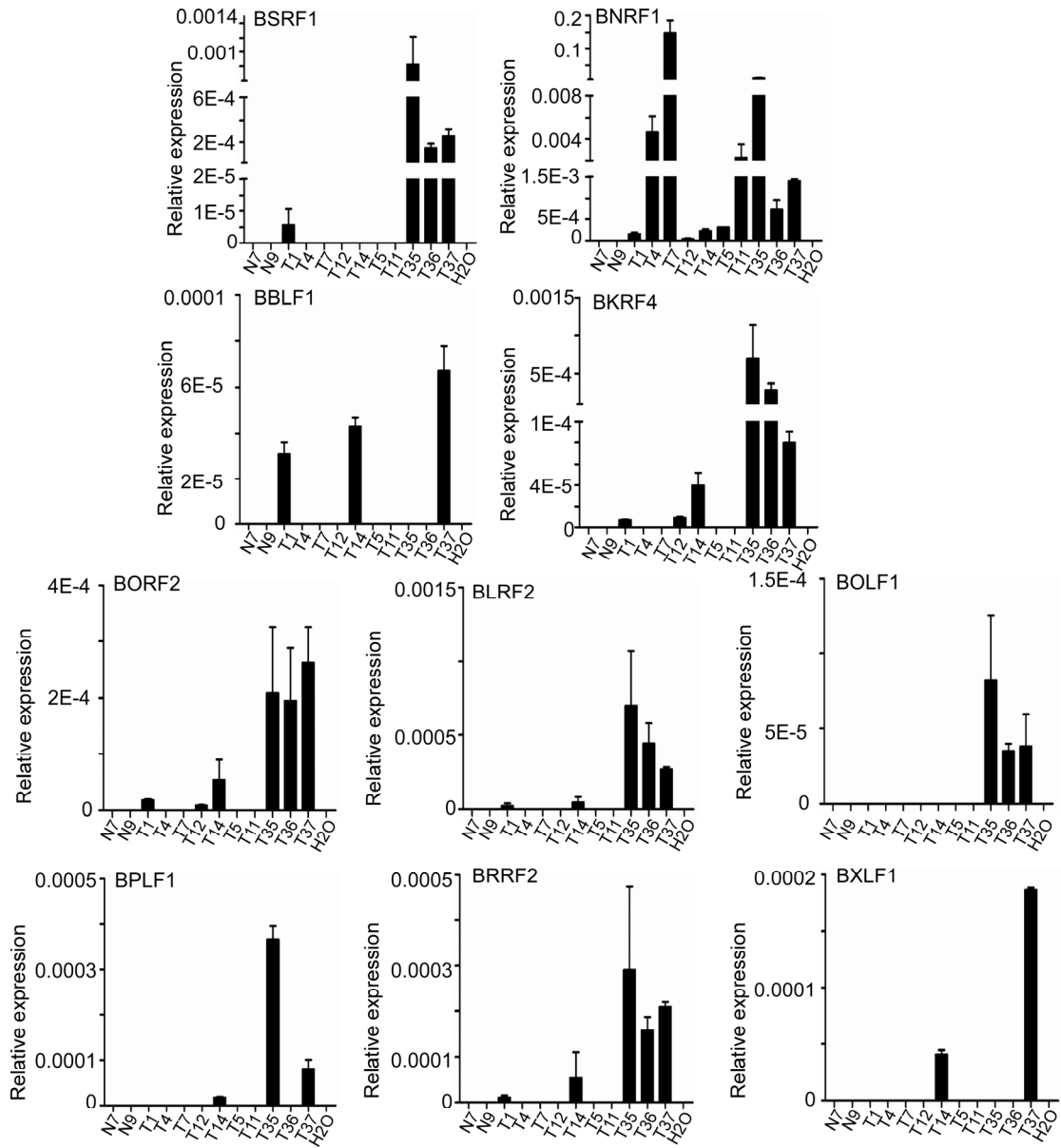
Supplemental Fig.S8



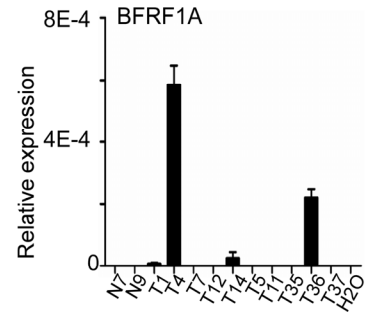
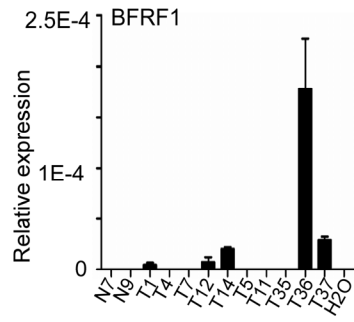
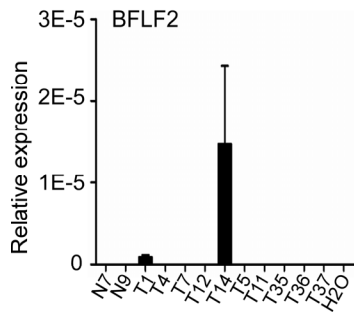
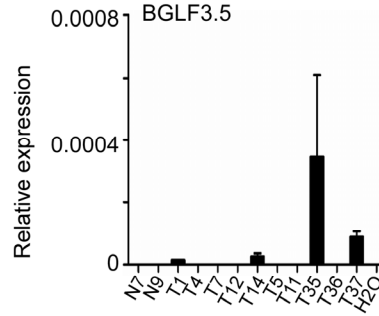
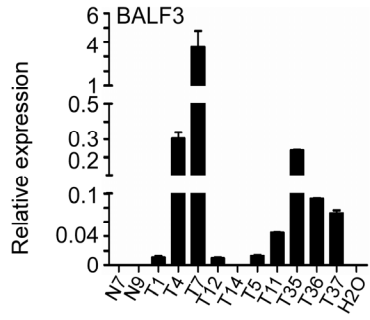
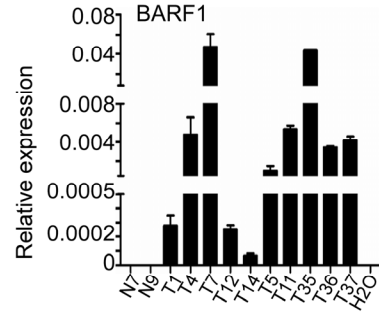
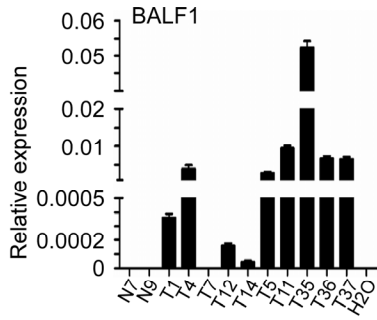
Supplemental Fig.S9



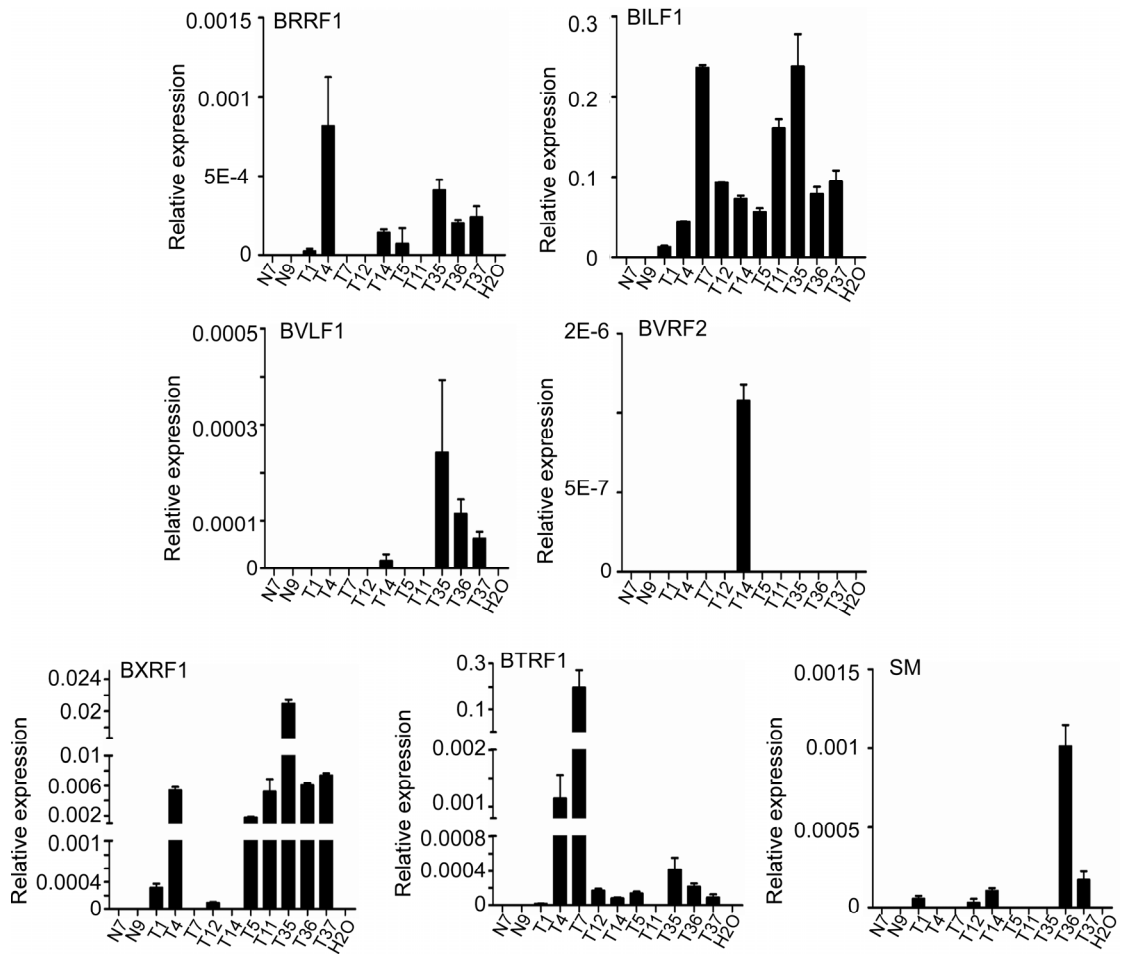
Supplemental Fig.S10



Supplemental Fig.S11

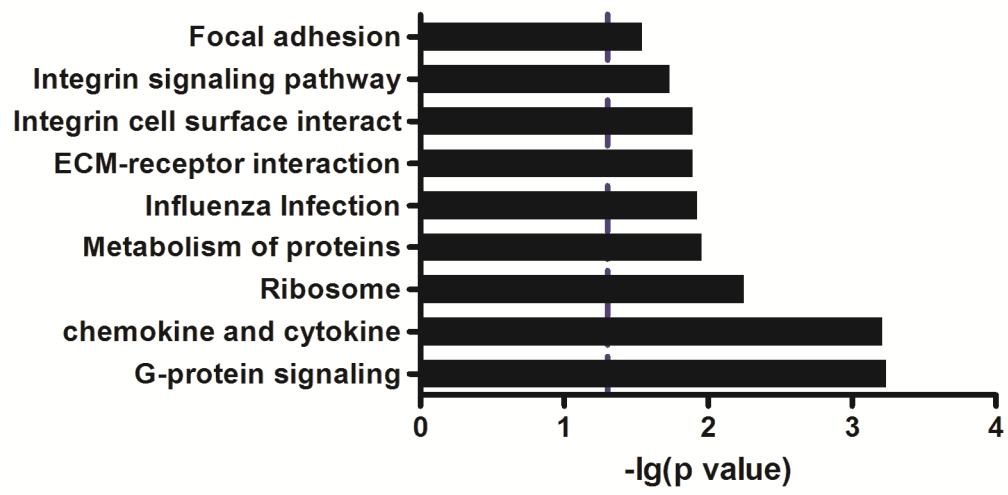


Supplemental Fig.S12



Supplemental Fig.S13





Supplemental Fig.S15