

Supplement Fig.1

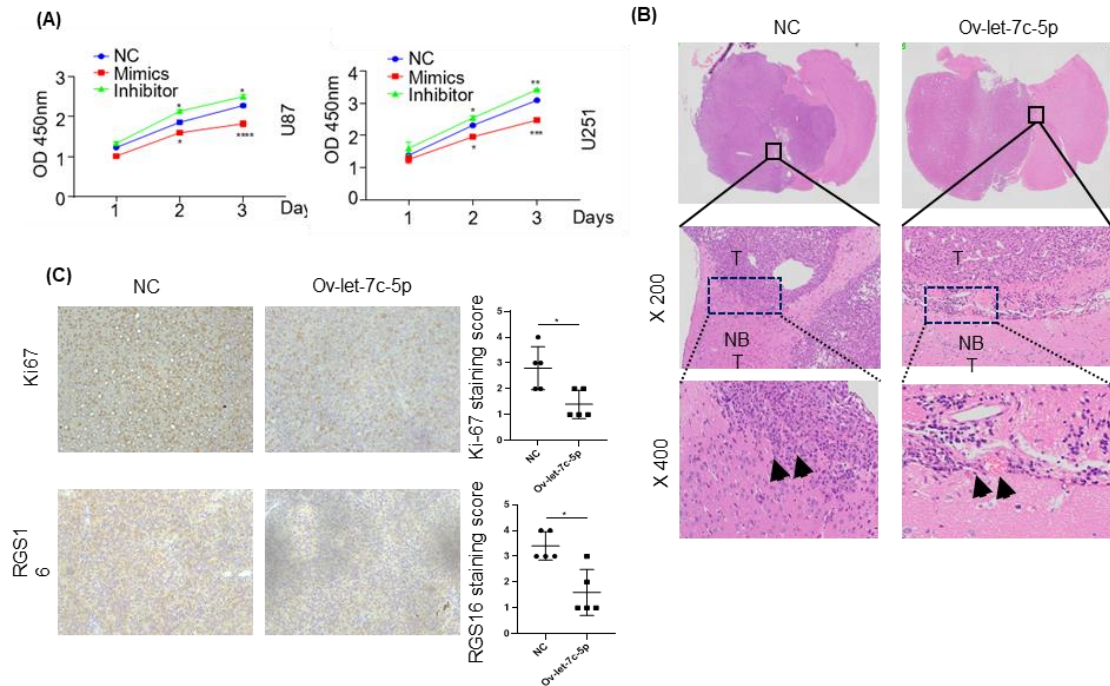


Figure.1 Overexpression of miR-Let-7c-5p inhibits glioma cell proliferation/migration/invasion ability. (A) CCK-8 assays showed that overexpression of Let-7c-5p reduced the proliferation of glioma cells compared with cells transfected with the inhibitor. (B) HE staining of the xenograft tissues showed that the borders of tumors in the NC group were blurred, tumor cells were more aggressive and infiltrated into the peripheral normal tissue. In the ov-let-7c-5p group, the borders between the tumor and peripheral tissues were distinct, and tumor infiltration was almost invisible. (C) RGS16 was downregulated in ov-let-7c-5p xenografts compared with the NC group, and there were fewer positive Ki-67 cells in the ov-let-7c-5p group compared with the NC group, scale bar=20um.

Supplement Table 1: Correlation between RSG16 and clinicopathological characteristics in glioma according to TCGA-glioma.

Variable		RSG16 high	RSG16 low	p Value
Age	≥45	203	122	<0.001
	< 45	110	173	
Gender	Male	184	171	0.838
	Female	129	124	
KPS	≥80	154	153	0.655
	<80	48	20	
Transcriptome Subtype	Neural (NE)	40	70	<0.0001
	Proneural (PN)	75	162	
	Classical (CL)	72	13	
	Mesenchymal (MES)	85	12	
IDH Status	Wild-type	199	36	<0.0001
	Mutant	123	302	
MGMT Promoter Status	Unmethylated	118	43	<0.0001
	Methylated	177	296	
TERT expression	Expressed	211	140	<0.0001
	Not expressed	116	196	
ATRX Status	Wild-type	256	205	<0.0001
	Mutant	64	130	
1p/19q	Codeletion	69	99	0.0205
	Non codeletion	253	239	