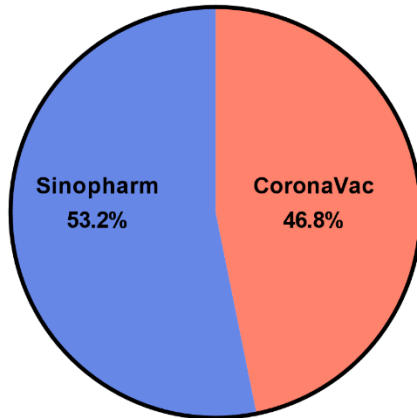


Table S1 | Details of the antibodies and probe design.

Fluorophore	Target	Clone	Source	Catalog	Dilution
FITC	CD19	HIB19	BD Biosciences	555412	1:200
BV421	CD38	HIT2	BD Biosciences	562444	1:200
Percepcy5.5	CD27	M-T271	BD Biosciences	560612	1:200
APC/Cyanine7	CD10	HI10a	BD Biosciences	312212	1:200
APC	IgD	IA6-2	BD Biosciences	561303	1:200
Fixable Viability Stain 510	L/D	--	BD Biosciences	566332	1:1000
PE-Streptavidin	RBD	--	BD Biosciences	554061	1:150 (Mole ratio)
PE/Cyanine7-Streptavidin	RBD	--	BD Biosciences	557598	1:100 (Mole ratio)

(A)

One-dose group (n=62)



(B)

Two-dose group (n=92)

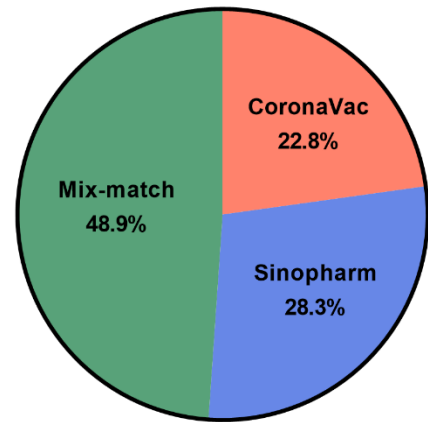


Figure S1 | The vaccine brand in vaccinated COVID-19 convalescents.

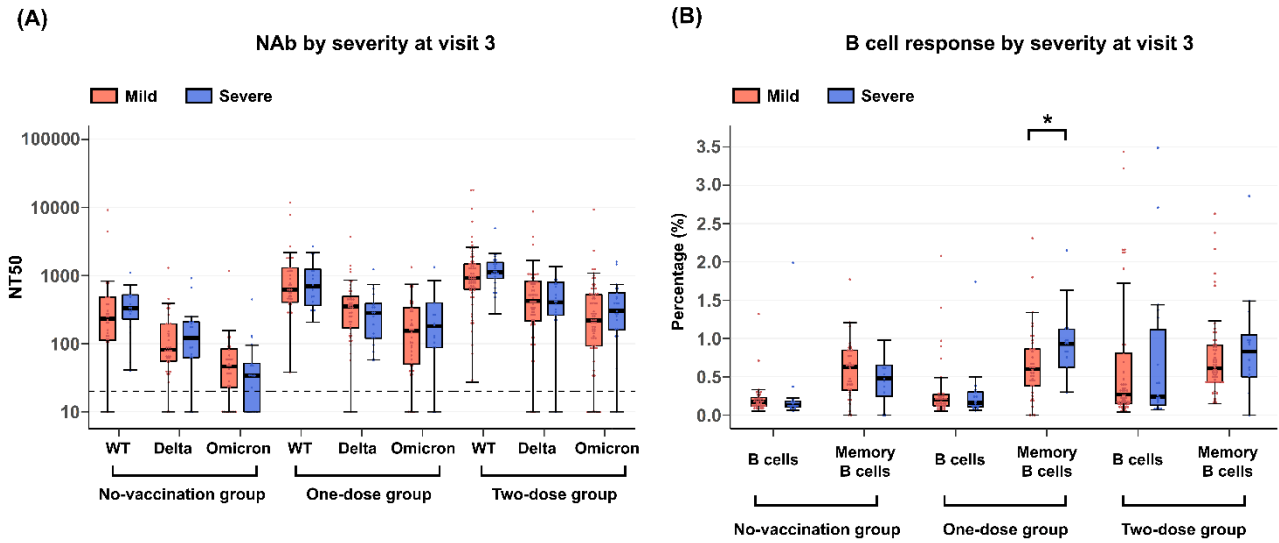


Figure S2 | SARS-CoV-2 neutralizing antibody and B cell response by disease severity. Notes: (A) NAb and **(B)** B cell response by disease severity at visit 3 in no-vaccination group, one-dose group, and two-dose group.

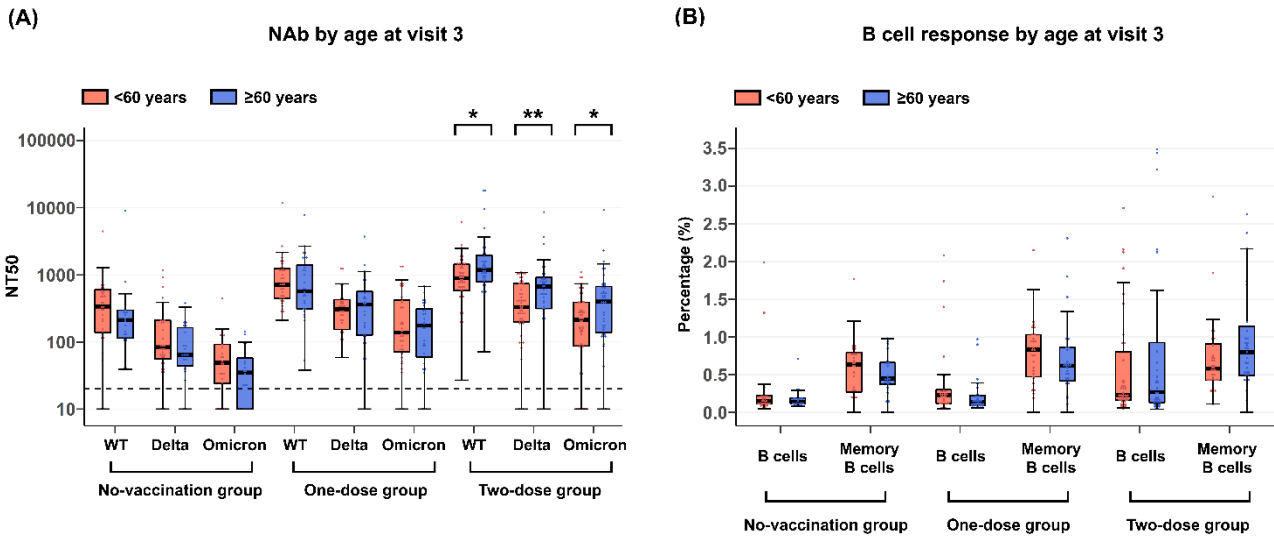


Figure S3 | SARS-CoV-2 neutralizing antibody and B cell response by age. Notes: (A) NAb and (B) B cell response by age at visit 3 in no-vaccination group, one-dose group, and two-dose group.

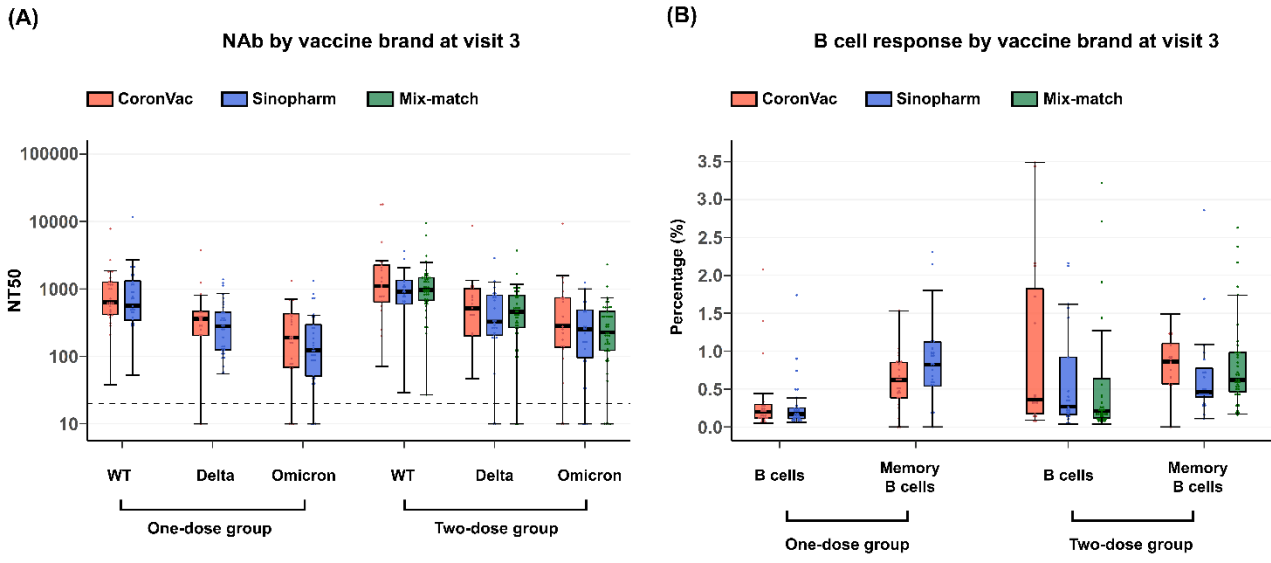


Figure S4 | SARS-CoV-2 neutralizing antibody and B cell response by vaccine brand. Notes: (A) NAb and (B) B cell response by vaccine brand at visit 3 in one-dose and two-dose groups.