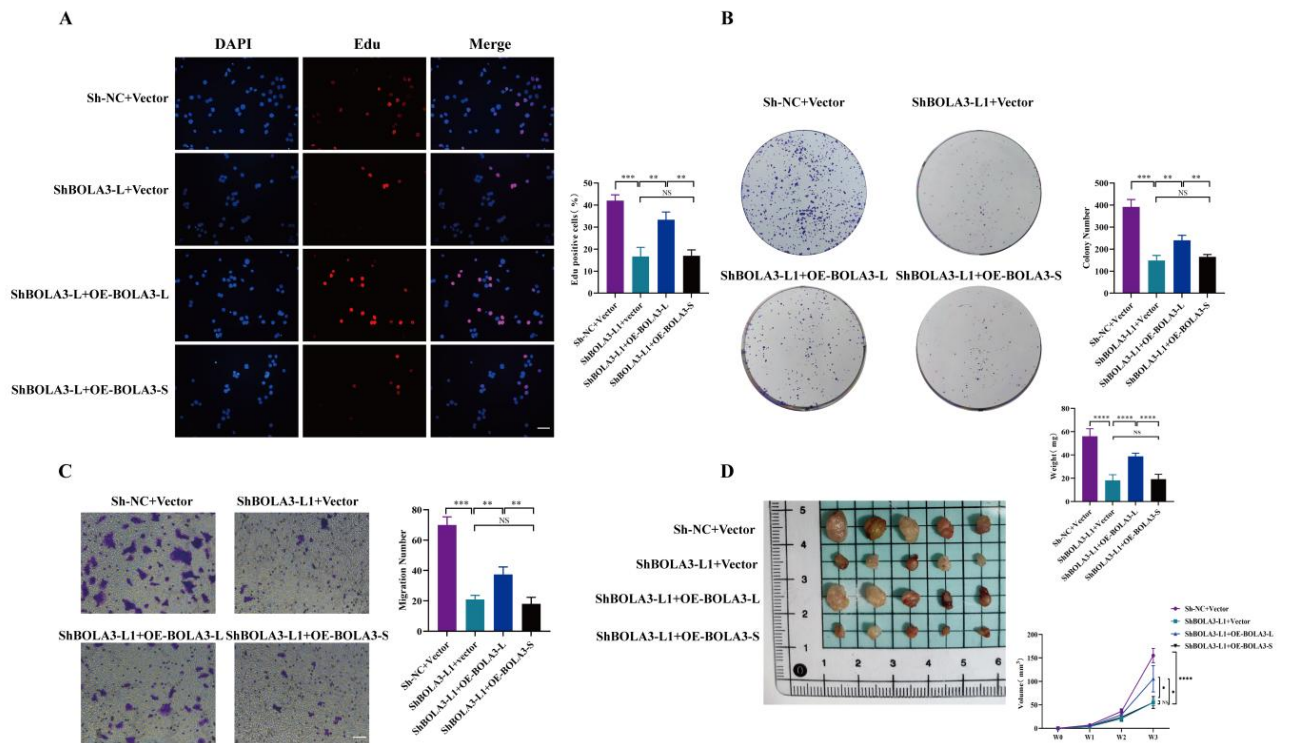
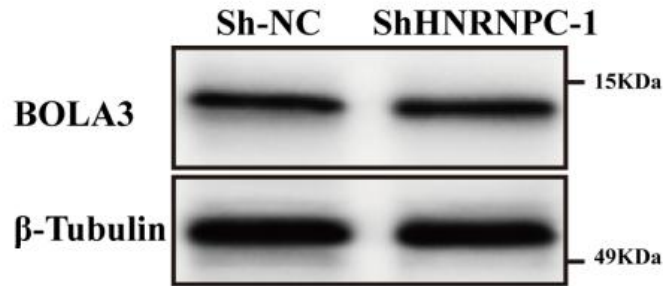


Supplement figure1. The dysregulated expression of BOLA3-L/S and BOLA3 in ESCC
 The dysregulated expression of BOLA3-L/S in ESCC tissue (A) and cell lines (B). C) The dysregulated expression of BOLA3 protein in ESCC cell lines

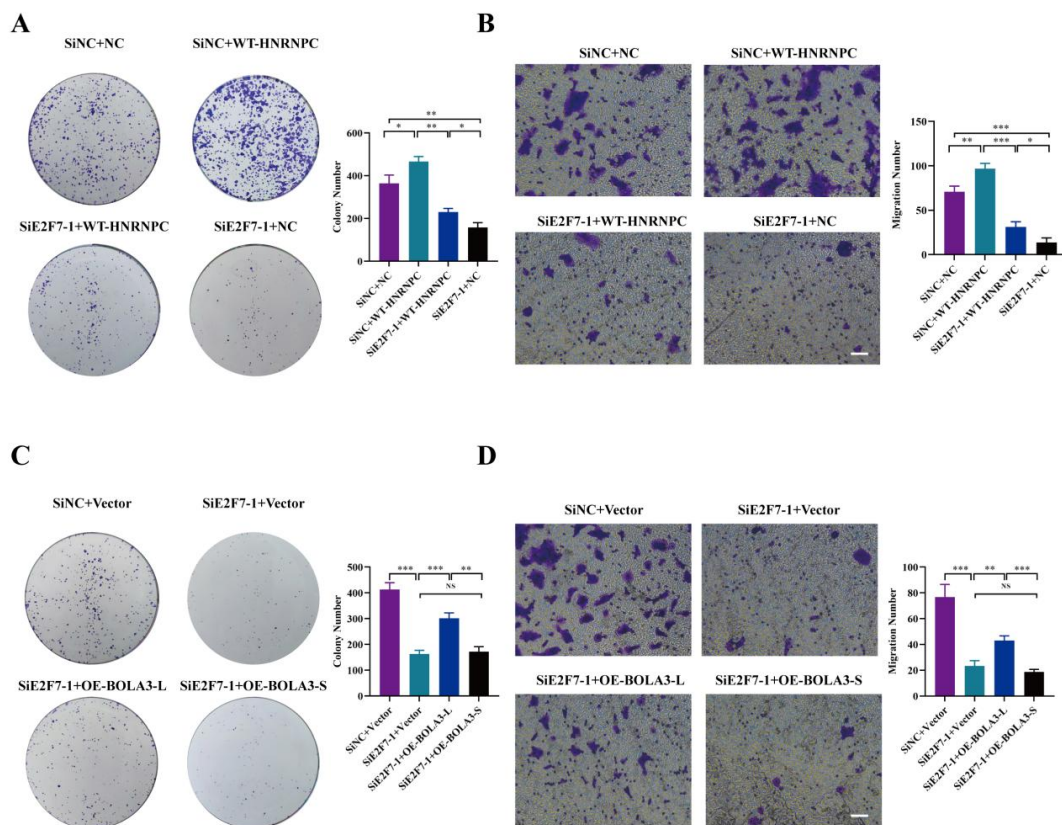


Supplement figure2. The rescue assays of overexpressing BOLA3-L/S after BOLA3-L knockdown

A) Edu assays of BOLA3-L/S rescuing proliferation phenotype (scale bar, 100 μ m) **B)** colony formation assays of BOLA3-L/S rescuing proliferation phenotype (scale bar, 100 μ m) **C)** transwell assays of BOLA3-L/S rescuing migration phenotype (scale bar, 100 μ m) **D)** xenograft tumor formation assay of BOLA3-L/S rescuing proliferation phenotype. Unpaired two-tailed student's t-test (**A,B,C,D**) and two-way ANOVA (**D**) were used for statistical analysis. "NS" indicates no significance, * $p < 0.05$, ** $p < 0.01$, *** $p < 0.001$.



Supplement figure3. BOLA3 protein level change after HNRNPC knockdown



Supplement figure4. The rescue assays of overexpressing HNRNPC and BOLA3-L/S after E2F7 knockdown

A) colony formation assays of HNRNPC rescuing proliferation phenotype **B)** transwell assays (scale bar, 100 μ m) of HNRNPC rescuing migration phenotype **C)** colony formation assays of BOLA3-L/S rescuing proliferation phenotype **D)** transwell assays (scale bar, 100 μ m) of BOLA3-L/S rescuing migration phenotype. Data are presented as mean \pm SD. In all panels, n \geq 3 independent experiments. Unpaired two-tailed Student's t-test were used for statistical analysis. "NS" indicates no significance, p < 0.05, *p < 0.01, ***p < 0.001.

Supplement table 1. Primer-id sequence (5'-3')

BOLA3-E(2-4)-F	TCACCATCGGATGTTTGCCA
BOLA3-E(2-4)-R	TCCGCAATCCATGCATCTCT
BOLA3-L-F	AGGTTGTGGGGCGATGTATG
BOLA3-L-R	TAACCATCTGGTGCTGCTGG
BOLA3-S-F	GCTTCCACTTCACCATCGGA
BOLA3-S-R	TTCTTCTTTTAGTGCCTGAAATGT
HNRNPC-F	GCCAGCAACGTTACCAACAA
HNRNPC-R	TGAACAGAGCAGCCCACAAT
E2F7-F	CTCGCTATCCAAGTTATCCC
E2F7-R	TTTCCACACCAAGACTGAC
GAPDH-F	GGAGCGAGATCCCTCCAAAAT
GAPDH-R	GGCTGTTGTCATACTTCTCATGG
CHIP-PCR-F	TTGCACAACGGAGGCTTCAT
CHIP-PCR-R	CCGTCTCACATCCGGGTATC

Supplement table2-coding genes related to OS in TCGA

id	statistic	hr	pvalue	gene_name	gene_type
ENSG00000001036.14	5.745490296	1.833967738	0.016531041	FUCA2	protein_coding
ENSG00000004961.15	5.262600926	1.751126171	0.021788434	HCCS	protein_coding
ENSG00000005022.6	9.563987102	2.097069717	0.001984317	SLC25A5	protein_coding
ENSG00000006837.12	4.088377844	1.633686191	0.043179064	CDKL3	protein_coding
ENSG00000008018.9	5.129920175	1.711252533	0.023516809	PSMB1	protein_coding
ENSG00000023041.11	7.406507374	1.993428452	0.006498837	ZDHHC6	protein_coding
ENSG00000023734.11	3.97974315	1.604903528	0.046050585	STRAP	protein_coding
ENSG00000034713.8	6.777968821	1.877095401	0.009228985	GABARAPL2	protein_coding
ENSG00000035115.22	4.608575003	1.687262887	0.031812458	SH3YL1	protein_coding
ENSG00000040275.17	4.359463113	1.657826527	0.036803903	SPDL1	protein_coding
ENSG00000046651.15	4.742039238	1.688273527	0.029434162	OFD1	protein_coding
ENSG00000048162.21	4.184812023	1.644705144	0.040787736	NOP16	protein_coding
ENSG00000051620.11	4.372067649	1.680654741	0.036532638	HEBP2	protein_coding
ENSG00000057663.16	6.422561349	1.853922042	0.011267953	ATG5	protein_coding
ENSG00000065615.14	3.998410485	1.635468866	0.045543195	CYB5R4	protein_coding
ENSG00000065911.13	8.724987305	2.064997929	0.003138783	MTHFD2	protein_coding
ENSG00000067829.19	5.291611543	1.762918685	0.021428382	IDH3G	protein_coding
ENSG00000069482.7	4.358380454	1.662505878	0.036827301	GAL	protein_coding
ENSG00000071994.11	4.144883205	1.644061055	0.041760536	PDCD2	protein_coding
ENSG00000072506.13	6.087636651	1.820156452	0.013613106	HSD17B10	protein_coding
ENSG00000076826.10	4.608950845	1.719890742	0.031805486	CAMSAP3	protein_coding
ENSG00000077147.16	4.156269088	1.683590168	0.041480678	TM9SF3	protein_coding
ENSG00000080371.6	6.5339004	1.84301494	0.010583763	RAB21	protein_coding
ENSG00000080644.16	4.945442023	1.702386977	0.026159549	CHRNA3	protein_coding
ENSG00000083454.22	3.955178341	1.617503658	0.046727367	P2RX5	protein_coding
ENSG00000083828.16	7.682657966	2.002279552	0.005575399	ZNF586	protein_coding
ENSG00000084073.10	4.920959426	1.733988427	0.026532779	ZMPSTE24	protein_coding
ENSG00000087076.9	4.670101157	1.686317564	0.03069212	HSD17B14	protein_coding
ENSG00000088876.13	7.590486928	1.927391472	0.00586771	ZNF343	protein_coding
ENSG00000088888.18	4.417005504	1.664098172	0.035582429	MAVS	protein_coding
ENSG00000089091.16	5.898860562	1.816409983	0.015150683	DZANK1	protein_coding
ENSG00000089123.16	4.817672118	1.710115249	0.028169364	TASP1	protein_coding
ENSG00000089177.19	6.788213044	1.863826888	0.009176172	KIF16B	protein_coding
ENSG00000089289.16	8.617233539	2.062098816	0.003329972	IGBP1	protein_coding
ENSG00000091009.8	8.006981367	2.012416681	0.004659735	RBM27	protein_coding
ENSG00000091879.14	5.933040976	1.807150826	0.014859578	ANGPT2	protein_coding
ENSG00000092199.18	4.772538493	1.678898875	0.028917158	HNRNPC	protein_coding
ENSG00000094880.11	3.947843729	1.612273183	0.046931468	CDC23	protein_coding
ENSG00000096092.6	6.304568484	1.828460678	0.012042722	TMEM14A	protein_coding
ENSG00000100591.8	4.811765405	1.683949664	0.028266074	AHSA1	protein_coding

ENSG00000101247.18	6.092651447	1.817798294	0.013574523	NDUFAF5	protein_coding
ENSG00000101343.15	5.494283642	1.773719715	0.019078743	CRNKL1	protein_coding
ENSG00000101367.9	5.062344127	1.733907223	0.024451144	MAPRE1	protein_coding
ENSG00000101391.21	5.299914641	1.769914034	0.021326469	CDK5RAP1	protein_coding
ENSG00000101464.11	6.268106775	1.818793833	0.012293042	PIGU	protein_coding
ENSG00000101470.10	7.683510428	2.002511224	0.005572766	TNNC2	protein_coding
ENSG00000101901.12	4.384909086	1.687139608	0.036258426	ALG13	protein_coding
ENSG00000101972.19	5.120131831	1.723140506	0.02364982	STAG2	protein_coding
ENSG00000102030.16	5.246744814	1.755744262	0.021987867	NAA10	protein_coding
ENSG00000102054.18	8.098440442	2.011779521	0.004430336	RBBP7	protein_coding
ENSG00000102081.15	6.53814741	1.829643102	0.010558525	FMR1	protein_coding
ENSG00000102144.15	7.826362577	1.917465373	0.005148962	PGK1	protein_coding
ENSG00000102158.20	4.027371236	1.635062742	0.044767646	MAGT1	protein_coding
ENSG00000102172.16	5.195636011	1.707653478	0.022643668	SMS	protein_coding
ENSG00000102390.11	3.965450909	1.632812409	0.046443082	PBDC1	protein_coding
ENSG00000102393.14	4.057133423	1.616202223	0.043985107	GLA	protein_coding
ENSG00000103160.12	5.991906487	1.799482043	0.014371661	HSDL1	protein_coding
ENSG00000104218.16	3.938136649	1.622401848	0.047203035	CSPP1	protein_coding
ENSG00000104805.16	4.305297589	1.642990716	0.037993847	NUCB1	protein_coding
ENSG00000105398.4	4.12412782	1.638757945	0.042275807	SULT2A1	protein_coding
ENSG00000105982.17	4.452787657	1.694663833	0.034844323	RNF32	protein_coding
ENSG00000105993.15	3.946220761	1.598495585	0.046976758	DNAJB6	protein_coding
ENSG00000106153.13	4.586793879	1.682010494	0.032219229	CHCHD2	protein_coding
ENSG00000106631.8	5.720488297	1.775421107	0.016768067	MYL7	protein_coding
ENSG00000107954.10	6.050719887	1.852289414	0.013900628	NEURL1	protein_coding
ENSG00000108179.14	6.723493206	1.871771318	0.009515108	PPIF	protein_coding
ENSG00000110245.12	4.483165194	1.692213863	0.034230271	APOC3	protein_coding
ENSG00000110435.12	4.318785575	1.68860324	0.037693814	PDHX	protein_coding
ENSG00000110442.12	7.279918975	1.980314003	0.006972968	COMMD9	protein_coding
ENSG00000111615.14	3.993288003	1.624583309	0.045681838	KRR1	protein_coding
ENSG00000111711.10	4.368747248	1.637705806	0.036603893	GOLT1B	protein_coding
ENSG00000111802.14	3.895871739	1.620734456	0.048404912	TDP2	protein_coding
ENSG00000112110.10	5.008699005	1.727785846	0.025220254	MRPL18	protein_coding
ENSG00000112335.15	10.09815378	2.087005661	0.001484179	SNX3	protein_coding
ENSG00000112763.17	4.663129609	1.709441135	0.030816972	BTN2A1	protein_coding
ENSG00000113013.16	4.108235987	1.63244345	0.042674852	HSPA9	protein_coding
ENSG00000113083.15	4.176715902	1.627523855	0.040983043	LOX	protein_coding
ENSG00000113194.13	5.004837268	1.721576265	0.02527658	FAF2	protein_coding
ENSG00000113558.19	5.119186631	1.722948145	0.023662705	SKP1	protein_coding
ENSG00000113732.9	4.668383113	1.682297789	0.030722839	ATP6V0E1	protein_coding
ENSG00000113734.18	4.63991412	1.682084403	0.031236566	BNIP1	protein_coding

ENSG00000114391.13	4.15172978	1.646954794	0.041592015	RPL24	protein_coding
ENSG00000114405.11	4.609144843	1.674181458	0.031801888	C3orf14	protein_coding
ENSG00000115307.17	8.141104238	2.009193108	0.004327292	AUP1	protein_coding
ENSG00000115484.15	3.991136644	1.619132819	0.045740199	CCT4	protein_coding
ENSG00000115947.14	4.312386587	1.651769746	0.037835846	ORC4	protein_coding
ENSG00000116161.18	4.21587938	1.627374267	0.040047303	CACYBP	protein_coding
ENSG00000116251.11	3.877956697	1.620789744	0.048924065	RPL22	protein_coding
ENSG00000116299.17	4.232656536	1.67422678	0.03965333	ELAPOR1	protein_coding
ENSG00000116478.12	4.594345154	1.689635106	0.032077595	HDAC1	protein_coding
ENSG00000117984.15	4.111990894	1.642821926	0.04258021	CTSD	protein_coding
ENSG00000118939.18	4.824651571	1.703380815	0.028055535	UCHL3	protein_coding
ENSG00000119042.17	6.061730898	1.832895231	0.013814222	SATB2	protein_coding
ENSG00000119048.8	6.476106906	1.84610511	0.01093342	UBE2B	protein_coding
ENSG00000119878.6	8.597813963	2.014812351	0.003365668	CRIP1	protein_coding
ENSG00000119888.11	6.492373132	1.905283605	0.010833826	EPCAM	protein_coding
ENSG00000120265.18	7.131100522	1.913228837	0.007575822	PCMT1	protein_coding
ENSG00000120438.12	7.484455426	1.941614981	0.006223389	TCP1	protein_coding
ENSG00000120509.11	11.04364865	2.229957988	0.000889915	PDZD11	protein_coding
ENSG00000122133.17	5.682371307	1.778002071	0.017136193	PAEP	protein_coding
ENSG00000122643.22	3.899569074	1.632171827	0.048298495	NT5C3A	protein_coding
ENSG00000122705.17	4.276115463	1.6473398	0.038651587	CLTA	protein_coding
ENSG00000123136.15	5.275749246	1.739387748	0.02162448	DDX39A	protein_coding
ENSG00000123178.15	6.08475295	1.780639119	0.013635343	SPRYD7	protein_coding
ENSG00000124116.19	6.29731197	1.837400865	0.01209212	WFDC3	protein_coding
ENSG00000124333.16	4.084591944	1.63496353	0.0432759	VAMP7	protein_coding
ENSG00000124562.10	8.301752068	2.040925432	0.003960685	SNRPC	protein_coding
ENSG00000125351.12	7.27119386	1.937789966	0.007006921	UPF3B	protein_coding
ENSG00000125675.18	4.219069201	1.632256856	0.039972082	GRIA3	protein_coding
ENSG00000125818.18	4.104778582	1.639931303	0.04276219	PSMF1	protein_coding
ENSG00000125835.19	6.416929551	1.818225769	0.011303744	SNRPB	protein_coding
ENSG00000125868.16	4.567596234	1.672067477	0.032582253	DSTN	protein_coding
ENSG00000125870.11	5.722621705	1.795808882	0.016747705	SNRPB2	protein_coding
ENSG00000125895.5	4.738059986	1.707597758	0.029502322	TMEM74B	protein_coding
ENSG00000125901.6	5.641993119	1.766773379	0.017535262	MRPS26	protein_coding
ENSG00000126457.22	5.310873704	1.741945255	0.021192726	PRMT1	protein_coding
ENSG00000127328.22	4.852159458	1.740492809	0.027611543	RAB3IP	protein_coding
ENSG00000128789.21	6.316716414	1.85783527	0.011960491	PSMG2	protein_coding
ENSG00000130119.17	5.078897563	1.732787312	0.024218765	GNL3L	protein_coding
ENSG00000130193.8	4.102978679	1.634602758	0.042807733	THEM6	protein_coding
ENSG00000130208.9	6.778455173	1.883705186	0.009226471	APOC1	protein_coding
ENSG00000130433.7	4.487973449	1.679122515	0.034134119	CACNG6	protein_coding

ENSG00000131143.10	8.088681248	1.999188192	0.004454256	COX4I1	protein_coding
ENSG00000131174.7	11.90503904	2.296772925	0.000559823	COX7B	protein_coding
ENSG00000131495.9	3.870176966	1.618053249	0.049151339	NDUFA2	protein_coding
ENSG00000131507.11	4.860066652	1.710207323	0.027485274	NDFIP1	protein_coding
ENSG00000132196.15	4.160822763	1.642890544	0.041369304	HSD17B7	protein_coding
ENSG00000132423.12	6.145258928	1.817432678	0.013176487	COQ3	protein_coding
ENSG00000132612.16	4.922198312	1.700488981	0.02651376	VPS4A	protein_coding
ENSG00000132664.12	4.645838783	1.689388409	0.031128921	POLR3F	protein_coding
ENSG00000132694.19	4.151254421	1.653762161	0.041603692	ARHGEF11	protein_coding
ENSG00000132792.19	4.969377178	1.713120198	0.025799936	CTNBL1	protein_coding
ENSG00000132823.11	5.167718029	1.726489829	0.023010424	OSER1	protein_coding
ENSG00000132963.8	5.004812918	1.72669979	0.025276935	POMP	protein_coding
ENSG00000133112.17	4.309849574	1.650548375	0.037892312	TPT1	protein_coding
ENSG00000133703.13	5.756549256	1.785427114	0.016427304	KRAS	protein_coding
ENSG00000133706.19	4.033720555	1.621505385	0.044599481	LARS1	protein_coding
ENSG00000134256.12	7.299864574	1.893446991	0.006895981	CD101	protein_coding
ENSG00000134375.11	4.244464907	1.643848643	0.039378477	TIMM17A	protein_coding
ENSG00000134594.5	4.01483817	1.615847548	0.045101552	RAB33A	protein_coding
ENSG00000134897.14	4.217178439	1.654492643	0.040016651	BIVM	protein_coding
ENSG00000135083.16	4.542688917	1.690332176	0.033059622	CCNJL	protein_coding
ENSG00000135390.21	5.474989739	1.774351461	0.019290474	ATP5MC2	protein_coding
ENSG00000135517.9	8.166930859	1.999319791	0.004266103	MIP	protein_coding
ENSG00000136143.16	5.18831361	1.724659789	0.022739271	SUCLA2	protein_coding
ENSG00000136518.17	5.904766839	1.78752394	0.015099964	ACTL6A	protein_coding
ENSG00000136522.14	4.412757645	1.653620632	0.035671132	MRPL47	protein_coding
ENSG00000136527.18	3.974158465	1.617195158	0.046203535	TRA2B	protein_coding
ENSG00000137776.17	3.908942158	1.622724494	0.048029821	SLTM	protein_coding
ENSG00000137875.4	6.936204028	1.87805921	0.008446818	BCL2L10	protein_coding
ENSG00000137876.11	5.144762546	1.74112683	0.023316599	RSL24D1	protein_coding
ENSG00000138036.18	9.045544657	2.082724442	0.002633358	DYNC2LI1	protein_coding
ENSG00000138382.15	4.389185407	1.661949884	0.036167589	METTL5	protein_coding
ENSG00000138668.19	4.198548206	1.64674747	0.040458603	HNRNPD	protein_coding
ENSG00000138678.11	4.250812153	1.656211477	0.039231565	GPAT3	protein_coding
ENSG00000139131.13	8.075365453	1.951564118	0.004487106	YARS2	protein_coding
ENSG00000139180.11	8.067907821	1.978672019	0.004505611	NDUFA9	protein_coding
ENSG00000139190.17	4.531610365	1.683372387	0.033274292	VAMP1	protein_coding
ENSG00000139644.13	5.224961718	1.760409304	0.022264936	TMBIM6	protein_coding
ENSG00000140527.15	4.92731447	1.7269621	0.026435369	WDR93	protein_coding
ENSG00000140832.10	4.95959577	1.730091507	0.025946272	MARVELD3	protein_coding
ENSG00000140993.11	6.404720788	1.852090835	0.011381732	TIGD7	protein_coding
ENSG00000141505.12	4.156612354	1.648002482	0.041472272	ASGR1	protein_coding

ENSG00000141560.15	4.225436647	1.642810215	0.039822372	FN3KRP	protein_coding
ENSG00000143278.5	5.096300226	1.715952475	0.023976933	F13B	protein_coding
ENSG00000143575.15	4.211757477	1.653586437	0.040144724	HAX1	protein_coding
ENSG00000143627.19	5.02516227	1.710825487	0.024981585	PKLR	protein_coding
ENSG00000143761.16	4.599986319	1.69774916	0.031972211	ARF1	protein_coding
ENSG00000143815.15	5.741615901	1.797037615	0.016567544	LBR	protein_coding
ENSG00000143977.14	4.561768112	1.674291615	0.032693305	SNRPG	protein_coding
ENSG00000144043.12	4.163800247	1.65941016	0.04129665	TEX261	protein_coding
ENSG00000144381.18	5.223027723	1.751650228	0.02228971	HSPD1	protein_coding
ENSG00000145014.18	4.344212819	1.670359725	0.03713493	TMEM44	protein_coding
ENSG00000145354.12	3.950100141	1.615593768	0.046868579	CISD2	protein_coding
ENSG00000145741.16	4.292467982	1.635272458	0.038281558	BTF3	protein_coding
ENSG00000146066.3	9.244029462	2.112039222	0.002362645	HIGD2A	protein_coding
ENSG00000146386.8	9.977615057	2.115482473	0.001584548	ABRACL	protein_coding
ENSG00000146425.11	4.836648217	1.710691657	0.027860997	DYNLT1	protein_coding
ENSG00000147123.11	4.805182858	1.711802905	0.028374255	NDUFB11	protein_coding
ENSG00000147140.17	7.088582811	1.890644236	0.007757657	NONO	protein_coding
ENSG00000147162.14	4.094191216	1.668186354	0.043030813	OGT	protein_coding
ENSG00000147274.14	6.567727113	1.871665149	0.010384449	RBMX	protein_coding
ENSG00000147403.18	5.946819326	1.80707551	0.014743866	RPL10	protein_coding
ENSG00000147601.15	5.501256616	1.740117892	0.019002813	TERF1	protein_coding
ENSG00000147614.4	6.015712886	1.790843122	0.014179049	ATP6V0D2	protein_coding
ENSG00000149600.12	4.882582936	1.716168944	0.027128994	COMMD7	protein_coding
ENSG00000150459.12	5.553021596	1.753440653	0.018448812	SAP18	protein_coding
ENSG00000151233.11	5.380898963	1.783044037	0.020358385	GXYLT1	protein_coding
ENSG00000152520.14	6.197113423	1.829336241	0.012795883	PAN3	protein_coding
ENSG00000153561.13	6.563691072	1.881724266	0.010408026	RMND5A	protein_coding
ENSG00000153774.9	4.800364219	1.678765719	0.028453721	CFDP1	protein_coding
ENSG00000154370.16	6.834645597	1.894971502	0.008940643	TRIM11	protein_coding
ENSG00000154975.14	4.828392178	1.719543736	0.027994726	CA10	protein_coding
ENSG00000155329.12	4.097460701	1.632557989	0.042947671	ZCCHC10	protein_coding
ENSG00000155542.12	4.058470083	1.635290296	0.043950301	SETD9	protein_coding
ENSG00000155545.20	4.17304143	1.644106496	0.041072008	MIER3	protein_coding
ENSG00000155959.12	7.205448946	1.912094665	0.007268257	VBPI	protein_coding
ENSG00000158516.12	3.860577874	1.5900856	0.0494333	CPA2	protein_coding
ENSG00000158526.8	3.890237217	1.610212281	0.048567563	TSR2	protein_coding
ENSG00000158553.4	4.045145098	1.631337247	0.04429857	POM121L2	protein_coding
ENSG00000158874.11	4.55950574	1.678396505	0.03273652	APOA2	protein_coding
ENSG00000159199.14	6.368137269	1.860257218	0.011618749	ATP5MC1	protein_coding
ENSG00000159399.10	5.099771793	1.721572158	0.023928991	HK2	protein_coding
ENSG00000160570.14	3.958125529	1.605875282	0.046645618	DEDD2	protein_coding

ENSG00000160888.7	8.176844386	2.07698054	0.004242851	IER2	protein_coding
ENSG00000161671.17	5.011267306	1.739710733	0.025182866	EMC10	protein_coding
ENSG00000162174.12	8.285666946	2.125174082	0.003995923	ASRGL1	protein_coding
ENSG00000162769.13	3.856408549	1.636181987	0.0495563	FLVCR1	protein_coding
ENSG00000162772.17	3.860098533	1.623954464	0.049447424	ATF3	protein_coding
ENSG00000162927.14	6.951042541	1.890320783	0.00837704	PUS10	protein_coding
ENSG00000162929.14	4.690633375	1.689104677	0.030327466	KIAA1841	protein_coding
ENSG00000162961.14	11.07945832	2.212598213	0.000872893	DPY30	protein_coding
ENSG00000162972.10	6.307898194	1.853332433	0.012020125	MAIP1	protein_coding
ENSG00000163170.12	3.943827187	1.613637923	0.047043635	BOLA3	protein_coding
ENSG00000163479.14	4.222193054	1.666120879	0.039898561	SSR2	protein_coding
ENSG00000163499.12	6.863229809	1.898363655	0.008798737	CRYBA2	protein_coding
ENSG00000163584.18	4.397936725	1.666793634	0.035982438	RPL22L1	protein_coding
ENSG00000164167.12	4.208693974	1.634537188	0.04021729	LSM6	protein_coding
ENSG00000164284.15	14.1458514	2.609984898	0.00016917	GRPEL2	protein_coding
ENSG00000164400.6	4.434121818	1.670166746	0.035227338	CSF2	protein_coding
ENSG00000164483.17	4.100292636	1.641113244	0.042875792	SAMD3	protein_coding
ENSG00000164587.13	5.211778024	1.760812795	0.022434381	RPS14	protein_coding
ENSG00000164758.7	7.662919259	1.925366024	0.005636723	MED30	protein_coding
ENSG00000164919.11	6.921535417	1.866788092	0.008516382	COX6C	protein_coding
ENSG00000165171.11	4.616954987	1.682724747	0.03165739	METTL27	protein_coding
ENSG00000165195.16	4.719190212	1.707248876	0.029827787	PIGA	protein_coding
ENSG00000165591.6	4.623264972	1.699655558	0.031541146	FAAH2	protein_coding
ENSG00000165606.9	3.928081565	1.619121237	0.047486086	DRGX	protein_coding
ENSG00000165891.16	4.502539582	1.660841313	0.033844554	E2F7	protein_coding
ENSG00000165997.5	5.763705792	1.80105879	0.01636053	ARL5B	protein_coding
ENSG00000166471.11	4.443619872	1.705472713	0.035031895	TMEM41B	protein_coding
ENSG00000166595.12	4.044845236	1.622818407	0.044306441	CIAO2B	protein_coding
ENSG00000166596.15	5.262897028	1.75925058	0.021784728	CFAP52	protein_coding
ENSG00000166848.7	3.955676622	1.601821314	0.046713535	TERF2IP	protein_coding
ENSG00000166913.13	4.005214018	1.63844346	0.045359738	YWHAB	protein_coding
ENSG00000166927.13	4.925479524	1.715674405	0.026463457	MS4A7	protein_coding
ENSG00000167005.14	5.882646178	1.781257145	0.015290824	NUDT21	protein_coding
ENSG00000167083.7	4.689793972	1.689960126	0.030342285	GNGT2	protein_coding
ENSG00000167281.19	5.287263131	1.74386697	0.021481955	RBFOX3	protein_coding
ENSG00000167513.9	5.709906927	1.788229407	0.016869434	CDT1	protein_coding
ENSG00000167515.10	6.149801562	1.814605108	0.013142685	TRAPPC2L	protein_coding
ENSG00000167862.10	3.958592263	1.638248348	0.046632686	MRPL58	protein_coding
ENSG00000168038.11	6.722987774	1.942022854	0.009517805	ULK4	protein_coding
ENSG00000168062.10	4.032508317	1.635080748	0.044631537	BATF2	protein_coding
ENSG00000168118.12	4.593938551	1.694080592	0.032085205	RAB4A	protein_coding

ENSG00000168131.4	6.093697128	1.819748842	0.013566492	OR2B2	protein_coding
ENSG00000168275.16	4.346253752	1.65633674	0.037090449	COA6	protein_coding
ENSG00000168566.13	4.784310713	1.714794108	0.02872014	SNRNP48	protein_coding
ENSG00000168634.5	6.115020492	1.821274651	0.013403786	WFDC13	protein_coding
ENSG00000168748.14	4.093164551	1.648517618	0.043056956	CA7	protein_coding
ENSG00000169242.12	10.03975178	2.120680711	0.001531978	EFNA1	protein_coding
ENSG00000169683.8	6.029076578	1.824178648	0.014072093	LRRC45	protein_coding
ENSG00000169689.15	4.098686012	1.643005463	0.042916555	CENPX	protein_coding
ENSG00000170128.5	4.211209496	1.650999349	0.040157694	GPR25	protein_coding
ENSG00000170345.10	3.91518285	1.650746663	0.04785181	FOS	protein_coding
ENSG00000171116.7	8.252286587	2.065919969	0.00407007	HSFX1	protein_coding
ENSG00000171124.13	4.029001	1.655621283	0.044724417	FUT3	protein_coding
ENSG00000171155.8	5.078955663	1.757425372	0.024217953	C1GALT1C1	protein_coding
ENSG00000171311.13	4.046628407	1.621501497	0.044259659	EXOSC1	protein_coding
ENSG00000171388.12	6.946504378	1.894860661	0.008398318	APLN	protein_coding
ENSG00000171450.6	9.552779914	2.108970838	0.001996468	CDK5R2	protein_coding
ENSG00000171612.7	3.970785147	1.634322718	0.046296181	SLC25A33	protein_coding
ENSG00000171657.6	9.886205749	2.10358137	0.001665224	GPR82	protein_coding
ENSG00000172062.17	6.202434249	1.825149556	0.012757474	SMN1	protein_coding
ENSG00000172809.13	4.334860785	1.657962718	0.037339469	RPL38	protein_coding
ENSG00000172818.10	5.183934118	1.733321417	0.022796651	OVOL1	protein_coding
ENSG00000172943.20	4.611835676	1.688697171	0.031752027	PHF8	protein_coding
ENSG00000173214.7	10.38671443	2.197162674	0.001269253	MFSD4B	protein_coding
ENSG00000173372.17	4.17293411	1.64209327	0.04107461	C1QA	protein_coding
ENSG00000173660.12	4.796039328	1.706920028	0.028525241	UQCRH	protein_coding
ENSG00000173825.7	6.201645406	1.848282664	0.012763161	TIGD3	protein_coding
ENSG00000175329.13	5.167285293	1.756488036	0.023016157	ISX	protein_coding
ENSG00000175820.4	7.213920879	1.945662175	0.007234029	CCDC168	protein_coding
ENSG00000175877.4	6.358093319	1.841583307	0.011684704	TMEM270	protein_coding
ENSG00000177324.14	4.389514135	1.66294332	0.036160617	BEND2	protein_coding
ENSG00000178449.9	7.414332036	1.940886342	0.006470633	COX14	protein_coding
ENSG00000179588.9	5.118354127	1.750656426	0.02367406	ZFPM1	protein_coding
ENSG00000181019.13	4.640617561	1.701527106	0.031223765	NQO1	protein_coding
ENSG00000181061.14	5.887482508	1.829710898	0.015248885	HIGD1A	protein_coding
ENSG00000181163.14	4.492317202	1.663843138	0.034047498	NPM1	protein_coding
ENSG00000181704.12	5.884610572	1.813900969	0.015273775	YIPF6	protein_coding
ENSG00000182004.13	5.381905377	1.750925873	0.020346645	SNRPE	protein_coding
ENSG00000182149.21	3.857622689	1.616433768	0.049520448	IST1	protein_coding
ENSG00000182327.8	5.089408879	1.766898671	0.024072396	GLTPD2	protein_coding
ENSG00000182378.14	4.276184452	1.654141374	0.038650018	PLCXD1	protein_coding
ENSG00000182870.13	4.779996351	1.702897156	0.028792182	GALNT9	protein_coding

ENSG00000183010.17	4.488778027	1.692265975	0.034118057	PYCR1	protein_coding
ENSG00000183684.8	4.746978778	1.697599169	0.029349781	ALYREF	protein_coding
ENSG00000183734.4	5.103792217	1.733910689	0.023873595	ASCL2	protein_coding
ENSG00000184216.14	7.533622569	1.954201074	0.006055802	IRAK1	protein_coding
ENSG00000184378.3	3.888096917	1.612857812	0.048629498	ACTRT3	protein_coding
ENSG00000184471.8	4.392791628	1.674664185	0.036091172	C1QTNF8	protein_coding
ENSG00000184497.13	3.889528054	1.62665317	0.048588075	TMEM255B	protein_coding
ENSG00000184545.11	3.868103051	1.629657965	0.049212113	DUSP8	protein_coding
ENSG00000184831.14	5.434347822	1.740488485	0.019744462	APOO	protein_coding
ENSG00000184992.13	4.860308142	1.741356021	0.027481427	BRI3BP	protein_coding
ENSG00000185404.17	4.496854759	1.677013734	0.033957258	SP140L	protein_coding
ENSG00000185825.17	11.52517543	2.263146197	0.0006866	BCAP31	protein_coding
ENSG00000186136.1	4.343053261	1.671498371	0.037160227	TAS2R42	protein_coding
ENSG00000187325.5	4.920469414	1.698611605	0.026540305	TAF9B	protein_coding
ENSG00000187676.8	4.112716817	1.613009735	0.042561939	B3GLCT	protein_coding
ENSG00000188010.15	5.870360604	1.807506812	0.015397897	MORN2	protein_coding
ENSG00000188056.12	4.147655906	1.629501916	0.041692203	TREML4	protein_coding
ENSG00000188706.13	3.920791285	1.624344396	0.047692427	ZDHHC9	protein_coding
ENSG00000189190.10	5.816616872	1.834218803	0.015875452	ZNF600	protein_coding
ENSG00000189403.15	5.158458187	1.732503124	0.023133425	HMGB1	protein_coding
ENSG00000196531.14	10.06136946	2.139555264	0.001514106	NACA	protein_coding
ENSG00000196660.11	6.930949631	1.91168436	0.00847167	SLC30A10	protein_coding
ENSG00000196748.10	6.038595673	1.830060658	0.013996414	CLPSL2	protein_coding
ENSG00000197063.11	4.158470873	1.649606453	0.041426788	MAFG	protein_coding
ENSG00000197153.5	4.597023148	1.679375683	0.032027522	H3C12	protein_coding
ENSG00000197279.4	5.004920422	1.749817273	0.025275365	ZNF165	protein_coding
ENSG00000197296.6	6.633952819	1.890754777	0.010005299	FITM2	protein_coding
ENSG00000198258.11	7.552528341	1.960000208	0.005992594	UBL5	protein_coding
ENSG00000198754.5	6.757069285	1.902606285	0.0093377	OXCT2	protein_coding
ENSG00000198814.13	5.524593231	1.818630588	0.018750962	GK	protein_coding
ENSG00000203747.12	4.023528141	1.61152156	0.044869756	FCGR3A	protein_coding
ENSG00000203880.12	5.106063509	1.73822483	0.023842358	PCMTD2	protein_coding
ENSG00000204195.4	3.961970261	1.614467993	0.046539201	AWAT1	protein_coding
ENSG00000204954.10	5.704494948	1.786442249	0.016921523	C12orf73	protein_coding
ENSG00000205155.8	6.094359558	1.812831178	0.013561407	PSENNEN	protein_coding
ENSG00000205352.11	3.932154078	1.639899171	0.04737123	PRR13	protein_coding
ENSG00000213337.9	8.578862873	2.032830014	0.003400877	ANKRD39	protein_coding
ENSG00000213471.10	7.874305832	1.992897069	0.005014212	TTL13P	protein_coding
ENSG00000215251.4	6.155720558	1.829432389	0.013098774	FASTKD5	protein_coding
ENSG00000223572.10	5.379292287	1.761375154	0.020377143	CKMT1A	protein_coding
ENSG00000229833.10	4.588326058	1.684656362	0.032190438	PET100	protein_coding

ENSG00000230989.7	5.016582051	1.713937688	0.025105679	HSBP1	protein_coding
ENSG00000232119.8	4.003701174	1.624632454	0.045400464	MCTS1	protein_coding
ENSG00000234616.9	5.865563861	1.795669423	0.015439912	JRK	protein_coding
ENSG00000241598.5	4.66667965	1.693137861	0.030753329	KRTAP5-4	protein_coding
ENSG00000251192.7	4.538685108	1.705050802	0.033137037	ZNF674	protein_coding
ENSG00000253251.3	5.328290107	1.761162921	0.02098196	SHLD3	protein_coding
ENSG00000253506.3	4.49202961	1.674160909	0.034053226	NACA2	protein_coding
ENSG00000256060.3	4.389271775	1.663688253	0.036165757	TRAPPC2B	protein_coding
ENSG00000256646.8	4.481357621	1.683383898	0.034266491	AC010132.3	protein_coding
ENSG00000256950.2	5.661434517	1.776812043	0.017341933	AC069503.2	protein_coding
ENSG00000261652.3	4.375959925	1.68656425	0.036449295	C15orf65	protein_coding
ENSG00000262919.8	6.151730853	1.795211188	0.013128356	CCNQ	protein_coding
ENSG00000265241.7	4.233504214	1.63289034	0.039633532	RBM8A	protein_coding
ENSG00000266826.2	8.090071631	2.038629175	0.00445084	IGBP1P2	protein_coding
ENSG00000271824.2	4.295850729	1.672927926	0.038205477	SMIM32	protein_coding
ENSG00000273703.2	4.422892069	1.655774547	0.035459887	H2BC14	protein_coding
ENSG00000273802.2	4.695976765	1.717185199	0.03023331	H2BC8	protein_coding
ENSG00000273841.5	6.576680799	1.85598242	0.010332339	TAF9	protein_coding
ENSG00000274290.3	3.960079517	1.624615461	0.046591502	H2BC6	protein_coding
ENSG00000275714.2	5.175635763	1.71411971	0.022905788	H3C1	protein_coding
ENSG00000276368.2	4.690703754	1.692781371	0.030326224	H2AC14	protein_coding
ENSG00000276966.2	4.343684678	1.666780475	0.03714645	H4C5	protein_coding
ENSG00000277481.1	5.396841112	1.761353635	0.020173232	PKD1L3	protein_coding
ENSG00000282608.2	4.749546128	1.690379298	0.029306023	ADORA3	protein_coding
ENSG00000284922.2	5.833146502	1.780595984	0.01572697	AP000812.4	protein_coding
ENSG00000284952.1	4.228392462	1.649637122	0.039753075	AC104472.3	protein_coding
ENSG00000285077.2	4.301672286	1.664088945	0.038074916	ARHGAP11B	protein_coding
ENSG00000285991.1	4.891487097	1.73723001	0.026989429	AL355312.5	protein_coding

Supplement table3-disregulated splicing factors in CH-cohort

gene_id	BaseMean	lfcSE	stat	FoldChange	log2FoldChange	p-value	q-value
ADAR	4900.233239	0.166747442	4.421788096	1.667078284	0.737321854	9.79E-06	0.000125118
AFF2	60.0440499	0.462559321	2.021391531	1.911908518	0.935013495	0.043239251	0.105248743
ALYREF	1070.478314	0.243008888	2.946310685	1.64259827	0.715979683	0.003215892	0.013928329
C1QBP	2000.579978	0.241398171	2.245936422	1.456156023	0.542164945	0.024708081	0.068232252
CACTIN	564.2962954	0.103841418	2.891508983	1.231364937	0.300258394	0.003833966	0.015890619
CCAR1	854.2993113	0.165407717	2.333120575	1.306689305	0.385916148	0.019641818	0.057112258
COIL	329.5652207	0.117714029	2.30292329	1.206716168	0.27108638	0.02128316	0.060705005
CPSF1	1122.458902	0.118171627	3.992083999	1.386791657	0.471751063	6.55E-05	0.000598094
CPSF2	1086.824189	0.150515741	4.19056757	1.54836584	0.630746384	2.78E-05	0.000298131
CPSF3	489.7766288	0.203846239	3.261354185	1.585364729	0.664814785	0.001108814	0.006017558
CRNKL1	621.9823278	0.118465017	2.22165985	1.200128571	0.263188972	0.026306302	0.071735509
CSTF1	444.7226553	0.146377064	3.066891797	1.365020499	0.448922617	0.002162971	0.010218842
CSTF3	342.1690369	0.147742049	3.705068098	1.461443802	0.547394353	0.000211334	0.001580242
CWF19L 1	414.1825517	0.147193391	2.089406829	1.237601522	0.307546876	0.036671117	0.092950826
DBR1	329.7012171	0.15514466	4.085150581	1.551635082	0.6337893	4.40E-05	0.000433676
DDX20	267.6240745	0.155530918	2.667670097	1.33321105	0.41490518	0.007637922	0.027430058
DDX23	1440.409513	0.130756193	2.132157072	1.213179262	0.278792742	0.032993936	0.085360412
DDX39A	908.237214	0.243226094	3.918274431	1.935929726	0.953026584	8.92E-05	0.000774059
DDX41	884.2586304	0.141968335	2.521816277	1.281663966	0.358018058	0.011675067	0.038360607
DDX47	838.5118663	0.130022015	2.335136031	1.234236694	0.303619092	0.019536316	0.056854818
DHX16	692.2125844	0.105754852	3.110637929	1.256111954	0.328965054	0.001866837	0.009070045
DHX8	869.8587501	0.138963628	2.117023393	1.2261957	0.29418925	0.034257862	0.087978391
DHX9	2778.746064	0.109992323	3.268773913	1.283016779	0.359540038	0.001080146	0.00589001
EFTUD2	1215.938901	0.185029664	3.466971674	1.55994223	0.641492602	0.000526357	0.003280271
EIF4A3	1494.065314	0.214060677	2.125238682	1.370716326	0.454930032	0.033566702	0.086638525
ELAVL1	1176.39131	0.106383076	2.765669225	1.226222175	0.2942204	0.005680612	0.021653781
FASTK	1272.224667	0.131338339	2.154659859	1.216713459	0.282989448	0.031188461	0.081839186
FUS	3351.156425	0.13072319	3.172631468	1.333055187	0.414736507	0.001510641	0.007636145
FXR1	2325.17215	0.186224835	3.285515801	1.52821194	0.611844637	0.001017958	0.005624111
GEMIN2	199.453678	0.229438363	3.080862394	1.632256769	0.706868024	0.00206402	0.009845975
GEMIN6	223.8809966	0.170565344	2.631109589	1.36488189	0.448776112	0.008510659	0.029836214
HNRNPA 2B1	8587.989384	0.12222422	3.098927173	1.300227396	0.378763958	0.001942228	0.009381928
HNRNPC	9137.084958	0.144765242	2.515204861	1.287091162	0.36411424	0.011896324	0.038904507
HNRNPL	3667.864473	0.102153446	2.808018745	1.219972638	0.286848791	0.004984733	0.019475207
HNRNP M	3889.634845	0.1502936	2.134250117	1.248991911	0.320764133	0.032822312	0.085015472
HNRNPR	2547.764157	0.117539283	2.730194349	1.249113944	0.320905085	0.0063297	0.023641005
HNRNPU	6530.477263	0.12104625	2.478909229	1.231197892	0.300062667	0.013178484	0.042079241

HSPA8	16993.05748	0.195230064	2.010676873	1.312706669	0.392544575	0.044359598	0.107266022
ISY1	287.7743574	0.112891919	3.208505346	1.28539728	0.362214325	0.001334268	0.006939906
IVNS1A BP	2996.785708	0.303314831	2.721105111	1.771966755	0.825351537	0.006506407	0.024137229
KDM1A	1132.030523	0.154535479	4.021236988	1.538392662	0.621423786	5.79E-05	0.000542269
KHDC4	510.9662386	0.178082507	2.927547245	1.435292676	0.521344953	0.003416472	0.014582224
KHSRP	2883.105748	0.119551523	3.42359037	1.328037092	0.409295442	0.000617997	0.003734503
LSM1	678.7028769	0.124882125	3.824607613	1.392449614	0.477625125	0.000130981	0.00106961
LSM10	505.5454977	0.139297111	2.766389338	1.306176668	0.385350043	0.005668082	0.021615851
LSM2	491.9786141	0.143814354	3.579349643	1.428758277	0.514761856	0.00034445	0.002342514
LSM4	1158.24577	0.192996534	3.214952862	1.537381017	0.62047476	0.001304659	0.006827663
LSM5	687.4048673	0.193622027	2.563982538	1.410731564	0.496443496	0.010347875	0.034826138
LSM7	787.0106533	0.216800171	2.743676134	1.51029404	0.594829456	0.006075545	0.02287304
MAGOH B	237.5112863	0.151181071	4.594462032	1.61843081	0.694595689	4.34E-06	6.48E-05
METTL3	490.7565147	0.101769018	3.780396496	1.30561292	0.384727239	0.000156579	0.001239977
NCBP1	666.7936292	0.167982836	2.986445314	1.415853064	0.501671552	0.002822413	0.012568476
NCBP2	1356.990547	0.090973295	6.400110579	1.497171144	0.582239148	1.55E-10	9.89E-09
NCL	8210.560004	0.167556221	2.341737704	1.312550308	0.39237272	0.019194199	0.056132169
NONO	3967.473147	0.107569695	3.086616964	1.258780248	0.332026446	0.002024483	0.009698187
PAPOLA	3226.734789	0.130240436	3.145450957	1.328377235	0.409664904	0.00165831	0.008231132
PHF5A	724.3625262	0.188986516	3.58105544	1.598558111	0.67677119	0.000342209	0.002332003
POLR2B	2036.055302	0.134852704	2.669820277	1.283454795	0.360032483	0.007589186	0.027295983
POLR2D	490.7132006	0.133587265	4.798481819	1.559427046	0.641016062	1.60E-06	2.82E-05
POLR2F	703.9691166	0.153036228	2.230193359	1.266898003	0.341300378	0.025734609	0.070474725
POLR2G	816.9365673	0.165086605	2.907096811	1.394668979	0.479922742	0.003648003	0.015351477
POLR2H	750.2072167	0.178689926	4.080298498	1.657614167	0.729108238	4.50E-05	0.000440703
POLR2K	1310.190788	0.133348251	3.335999929	1.361172354	0.444849755	0.000849932	0.004862516
PPIL1	563.8593146	0.239148161	3.518943513	1.791972962	0.84154887	0.000433269	0.002807536
PPP1R9B	1572.922374	0.116667	2.848458282	1.259037351	0.332321084	0.004393161	0.017649533
PRCC	983.151031	0.126422428	2.848135186	1.283486538	0.360068165	0.004397624	0.01765868
PRPF19	1663.286518	0.201308102	2.089561556	1.338526471	0.42064567	0.036657203	0.092943675
PRPF4	596.6014358	0.202363048	3.173287584	1.560659866	0.642156147	0.001507231	0.007623507
PRPF40A	1941.55989	0.272693245	2.34315317	1.557208411	0.638962042	0.019121531	0.055978249
PTBP1	3997.465412	0.192936038	2.633730473	1.422216918	0.508141523	0.00844525	0.029675314
PTBP3	2453.766086	0.335066536	2.088042377	1.624091737	0.699633125	0.036794012	0.093195788
PUF60	2350.060284	0.149437592	3.579101784	1.448793877	0.534852354	0.000344777	0.002343785
RAVER1	746.0876242	0.154864983	3.695588133	1.486909864	0.572317194	0.000219378	0.001628765
RBM12B	427.7541034	0.165749556	3.285890696	1.458651185	0.544634925	0.001016605	0.005620337
RBM14	335.0855053	0.126986564	2.902152823	1.291040639	0.368534414	0.003706077	0.015525683
RBM15	216.0735326	0.227458429	2.571828903	1.500022521	0.584984161	0.010116287	0.034184034
RBM19	498.2135054	0.183022947	2.488685772	1.371245231	0.455486603	0.012821623	0.041270062

RBM28	386.7940568	0.104325421	4.217047237	1.356552825	0.439945228	2.48E-05	0.000271626
RNPS1	2136.504948	0.102969144	3.002330097	1.238975244	0.309147361	0.002679215	0.012042812
RRP1B	644.4334545	0.171769825	2.796386155	1.395067337	0.48033476	0.005167761	0.02006621
RSRC1	434.1349348	0.206554986	3.484820367	1.646961719	0.719807022	0.000492468	0.00310756
RTRAF	1901.211054	0.127083359	2.078800589	1.200954057	0.264180962	0.037635683	0.094722309
SART1	1248.422335	0.162780147	2.0499171	1.260228907	0.333685807	0.040372521	0.099840959
SF3A3	1232.594764	0.110981935	2.378408132	1.200770416	0.263960338	0.017387569	0.051890796
SF3B4	910.5929271	0.181885674	2.935743471	1.447907742	0.533969679	0.003327494	0.014297131
SFPQ	3640.508218	0.120066493	2.67512575	1.249363222	0.321192967	0.007470122	0.026931334
SNRNP40	487.1157753	0.163338087	3.670367851	1.51520276	0.599510864	0.000242202	0.001762298
SNRNP48	251.3918295	0.185268828	2.870613709	1.445767172	0.531835237	0.004096758	0.016727431
SNRPA1	471.8121329	0.263539835	2.196358383	1.493635295	0.578827925	0.028066302	0.075301829
SNRPB	2565.03924	0.2814034	2.679801663	1.686585318	0.754105301	0.007366579	0.026598098
SNRPB2	799.683844	0.12648557	3.768527715	1.391522635	0.476664376	0.000164213	0.001287656
SNRPC	943.2272597	0.217998808	3.927003945	1.810116033	0.85608218	8.60E-05	0.000751057
SNRPD1	780.3839682	0.232634508	2.767382105	1.562426772	0.643788575	0.005650848	0.021564851
SNRPD3	1730.578105	0.143029087	2.04425011	1.224665054	0.292387226	0.040928845	0.10074099
SNRPE	762.7391454	0.205258093	2.9150654	1.513974353	0.598340766	0.00355614	0.015040444
SNRPF	586.5482795	0.234724126	2.260641144	1.444556885	0.530627017	0.023781488	0.066252102
SNRPG	1463.820587	0.292502486	2.967889821	1.825276658	0.86811515	0.002998518	0.01318797
SNW1	1261.475382	0.117305607	2.889049741	1.264793392	0.338901735	0.003864079	0.015996054
SRPK1	1179.816581	0.23417895	2.435828968	1.484955677	0.57041987	0.014857708	0.046148398
SRPK2	788.2899605	0.128134464	3.322401641	1.343237258	0.425714153	0.000892461	0.005048945
SRSF1	3393.464032	0.111496675	2.740633322	1.235908128	0.305571503	0.00613209	0.023029007
SRSF10	1591.601565	0.16063619	2.271126844	1.287725563	0.364825162	0.0231393	0.064872889
SRSF6	2128.413728	0.162538347	1.983420852	1.250393294	0.322381946	0.04732044	0.112650747
STRAP	1892.535884	0.135245643	2.029899743	1.209604235	0.274535096	0.042366731	0.103595406
SYMPK	1083.233047	0.13409916	3.629163634	1.401204762	0.486667796	0.000284341	0.001996941
TFIP11	580.1982163	0.157480948	2.039319227	1.249329414	0.321153926	0.041418178	0.101780966
TGS1	419.7557009	0.156822713	2.311584327	1.285659787	0.362508925	0.020800601	0.059651463
THOC1	310.8373211	0.165988771	2.584276963	1.346263636	0.428960957	0.00975834	0.033202132
THOC6	389.3884388	0.214124791	4.206534055	1.86700168	0.900723226	2.59E-05	0.000281801
TRA2B	2500.605366	0.152147898	2.155216858	1.255195177	0.327911714	0.031144868	0.081763208
TSEN15	538.278389	0.185852614	3.367493857	1.543127786	0.625857536	0.000758547	0.004419671
TTF2	297.2814248	0.235006007	2.387038203	1.475259058	0.560968317	0.016984726	0.051024004
U2AF2	2431.755759	0.11421159	2.40606383	1.209826675	0.274800375	0.016125447	0.049120908
U2SURP	1620.90052	0.240336293	2.20663132	1.444263111	0.530333592	0.027339827	0.073894408
USB1	713.5480863	0.130735063	5.511766016	1.647845607	0.720581077	3.55E-08	1.08E-06
USP39	822.4197284	0.126361766	3.238288577	1.327945431	0.409195863	0.001202491	0.006405004
VIRMA	974.8174557	0.129681362	2.135242683	1.211589668	0.27690118	0.032741192	0.084850627

WT1	15.12323977	0.993924744	4.468196828	21.7214934	4.44105139	7.89E-06	0.000106082
-----	-------------	-------------	-------------	------------	------------	----------	-------------

Supplement table4-BOLA3-RBPs predicted by POSTAR3

RNA binding protein	Cell & tissue type	RBS location	eClip score: -log10 P-value	PhastCons score	PhyloP score	Transcript ID	Data accession
ELAVL1	HEK293	chr2:74135573-74135595;-	0.999	0.166	0.109	ENST00000295326	GSE50989,GSM1234284
HNRNPC	HEK293T	chr2:74137493-74137512;-	0.985	0.083	0.27	ENST00000327428	GSE56010,GSM1350198
HNRNPC	HEK293T	chr2:74137493-74137512;-	0.985	0.083	0.27	ENST00000477685	GSE56010,GSM1350198
HNRNPC	HEK293T	chr2:74137493-74137512;-	0.985	0.083	0.27	ENST00000484655	GSE56010,GSM1350198
HNRNPC	HEK293T	chr2:74137493-74137512;-	0.985	0.083	0.27	ENST00000295326	GSE56010,GSM1350198
HNRNPC	HEK293T	chr2:74137493-74137512;-	0.985	0.083	0.27	ENST00000469676	GSE56010,GSM1350198
NUDT21	HEK293	chr2:74138872-74138910;-	0.973	0.015	0.03	ENST00000327428	GSE37401,GSM917661
NUDT21	HEK293	chr2:74138872-74138910;-	0.973	0.015	0.03	ENST00000477685	GSE37401,GSM917661
NUDT21	HEK293	chr2:74138872-74138910;-	0.973	0.015	0.03	ENST00000484655	GSE37401,GSM917661
NUDT21	HEK293	chr2:74138872-74138910;-	0.973	0.015	0.03	ENST00000295326	GSE37401,GSM917661
NUDT21	HEK293	chr2:74138872-74138910;-	0.973	0.015	0.03	ENST00000469676	GSE37401,GSM917661
HNRNPC	HEK293T	chr2:74137493-74137510;-	0.966	0.092	0.316	ENST00000327428	GSE56010,GSM1350200
HNRNPC	HEK293T	chr2:74137493-74137510;-	0.966	0.092	0.316	ENST00000477685	GSE56010,GSM1350200
HNRNPC	HEK293T	chr2:74137493-74137510;-	0.966	0.092	0.316	ENST00000484655	GSE56010,GSM1350200
HNRNPC	HEK293T	chr2:74137493-74137510;-	0.966	0.092	0.316	ENST00000295326	GSE56010,GSM1350200
HNRNPC	HEK293T	chr2:74137493-74137510;-	0.966	0.092	0.316	ENST00000469676	GSE56010,GSM1350200
CPSF7	HEK293	chr2:74135422-74135484;-	0.95	0.378	0.882	ENST00000327428	GSE37401,GSM917663
CPSF7	HEK293	chr2:74135422-74135484;-	0.95	0.378	0.882	ENST00000295326	GSE37401,GSM917663
HNRNPC	HEK293T	chr2:74143464-74143524;-	0.934	0.012	-0.046	ENST00000327428	GSE56010,GSM1350196
HNRNPC	HEK293T	chr2:74143464-74143524;-	0.934	0.012	-0.046	ENST00000477685	GSE56010,GSM1350196

HNRNPC	HEK293T	chr2:74143464-74143524;-	0.934	0.012	-0.046	ENST00000484655	GSE56010,GSM1350196
HNRNPC	HEK293T	chr2:74143464-74143524;-	0.934	0.012	-0.046	ENST00000295326	GSE56010,GSM1350196
HNRNPC	HEK293T	chr2:74143464-74143524;-	0.934	0.012	-0.046	ENST00000469676	GSE56010,GSM1350196
FIP1L1	HEK293	chr2:74142273-74142311;-	0.931	0.954	3.834	ENST00000327428	GSE37401,GSM917675
CPSF6	HEK293	chr2:74145245-74145296;-	0.922	0.647	1.975	ENST00000327428	GSE37401,GSM917665
CPSF6	HEK293	chr2:74145245-74145296;-	0.922	0.647	1.975	ENST00000295326	GSE37401,GSM917665
FIP1L1	HEK293	chr2:74138126-74138164;-	0.91	0.001	-0.024	ENST00000327428	GSE37401,GSM917675
FIP1L1	HEK293	chr2:74138126-74138164;-	0.91	0.001	-0.024	ENST00000477685	GSE37401,GSM917675
FIP1L1	HEK293	chr2:74138126-74138164;-	0.91	0.001	-0.024	ENST00000484655	GSE37401,GSM917675
FIP1L1	HEK293	chr2:74138126-74138164;-	0.91	0.001	-0.024	ENST00000295326	GSE37401,GSM917675
FIP1L1	HEK293	chr2:74138126-74138164;-	0.91	0.001	-0.024	ENST00000469676	GSE37401,GSM917675
MOV10	HEK293	chr2:74137432-74137459;-	0.891	0.013	0.244	ENST00000327428	GSE37524,GSM921128
MOV10	HEK293	chr2:74137432-74137459;-	0.891	0.013	0.244	ENST00000477685	GSE37524,GSM921128
MOV10	HEK293	chr2:74137432-74137459;-	0.891	0.013	0.244	ENST00000484655	GSE37524,GSM921128
MOV10	HEK293	chr2:74137432-74137459;-	0.891	0.013	0.244	ENST00000295326	GSE37524,GSM921128
MOV10	HEK293	chr2:74137432-74137459;-	0.891	0.013	0.244	ENST00000469676	GSE37524,GSM921128
HNRNPC	HEK293T	chr2:74139257-74139275;-	0.888	0.002	-0.124	ENST00000327428	GSE56010,GSM1350196
HNRNPC	HEK293T	chr2:74139257-74139275;-	0.888	0.002	-0.124	ENST00000477685	GSE56010,GSM1350196
HNRNPC	HEK293T	chr2:74139257-74139275;-	0.888	0.002	-0.124	ENST00000484655	GSE56010,GSM1350196
HNRNPC	HEK293T	chr2:74139257-74139275;-	0.888	0.002	-0.124	ENST00000295326	GSE56010,GSM1350196
HNRNPC	HEK293T	chr2:74139257-74139275;-	0.888	0.002	-0.124	ENST00000469676	GSE56010,GSM1350196
CPSF2	HEK293	chr2:74135493-74135517;-	0.865	0.456	0.528	ENST00000327428	GSE37401,GSM917670
CPSF2	HEK293	chr2:74135493-74135517;-	0.865	0.456	0.528	ENST00000295326	GSE37401,GSM917670
NUDT21	HEK293	chr2:74144414-74144452;-	0.85	0.001	-0.531	ENST00000327428	GSE37401,GSM917661

NUDT21	HEK293	chr2:74144414-74144452;-	0.85	0.001	-0.531	ENST00000477685	GSE37401,GSM917661
NUDT21	HEK293	chr2:74144414-74144452;-	0.85	0.001	-0.531	ENST00000484655	GSE37401,GSM917661
NUDT21	HEK293	chr2:74144414-74144452;-	0.85	0.001	-0.531	ENST00000295326	GSE37401,GSM917661
NUDT21	HEK293	chr2:74144414-74144452;-	0.85	0.001	-0.531	ENST00000469676	GSE37401,GSM917661
ELAVL1	HEK293	chr2:74138906-74138935;-	0.828	0.001	-0.287	ENST00000327428	GSE28865,GSM714639
ELAVL1	HEK293	chr2:74138906-74138935;-	0.828	0.001	-0.287	ENST00000477685	GSE28865,GSM714639
ELAVL1	HEK293	chr2:74138906-74138935;-	0.828	0.001	-0.287	ENST00000484655	GSE28865,GSM714639
ELAVL1	HEK293	chr2:74138906-74138935;-	0.828	0.001	-0.287	ENST00000295326	GSE28865,GSM714639
ELAVL1	HEK293	chr2:74138906-74138935;-	0.828	0.001	-0.287	ENST00000469676	GSE28865,GSM714639
CAPRIN1	HEK293	chr2:74139511-74139536;-	0.828	0	-0.272	ENST00000327428	GSE38201,GSM936509
CAPRIN1	HEK293	chr2:74139511-74139536;-	0.828	0	-0.272	ENST00000477685	GSE38201,GSM936509
CAPRIN1	HEK293	chr2:74139511-74139536;-	0.828	0	-0.272	ENST00000484655	GSE38201,GSM936509
CAPRIN1	HEK293	chr2:74139511-74139536;-	0.828	0	-0.272	ENST00000295326	GSE38201,GSM936509
CAPRIN1	HEK293	chr2:74139511-74139536;-	0.828	0	-0.272	ENST00000469676	GSE38201,GSM936509
ELAVL1	HEK293	chr2:74137762-74137792;-	0.816	0.008	-0.079	ENST00000327428	GSE28865,GSM714640
ELAVL1	HEK293	chr2:74137762-74137792;-	0.816	0.008	-0.079	ENST00000477685	GSE28865,GSM714640
ELAVL1	HEK293	chr2:74137762-74137792;-	0.816	0.008	-0.079	ENST00000484655	GSE28865,GSM714640
ELAVL1	HEK293	chr2:74137762-74137792;-	0.816	0.008	-0.079	ENST00000295326	GSE28865,GSM714640
ELAVL1	HEK293	chr2:74137762-74137792;-	0.816	0.008	-0.079	ENST00000469676	GSE28865,GSM714640
HNRNPC	HEK293T	chr2:74141713-74141741;-	0.812	0.004	-0.188	ENST00000327428	GSE56010,GSM1350197
HNRNPC	HEK293T	chr2:74141713-74141741;-	0.812	0.004	-0.188	ENST00000477685	GSE56010,GSM1350197
HNRNPC	HEK293T	chr2:74141713-74141741;-	0.812	0.004	-0.188	ENST00000484655	GSE56010,GSM1350197
HNRNPC	HEK293T	chr2:74141713-74141741;-	0.812	0.004	-0.188	ENST00000295326	GSE56010,GSM1350197
HNRNPC	HEK293T	chr2:74141713-74141741;-	0.812	0.004	-0.188	ENST00000469676	GSE56010,GSM1350197

CSTF2T	HEK293	chr2:74135562-74135613;-	0.796	0.405	1.168	ENST00000295326	GSE37401,GSM917677
HNRNPC	HEK293T	chr2:74135600-74135638;-	0.795	0.843	3.041	ENST00000327428	GSE56010,GSM1350197
HNRNPC	HEK293T	chr2:74135600-74135638;-	0.795	0.843	3.041	ENST00000295326	GSE56010,GSM1350197
FIP1L1	HEK293	chr2:74141914-74141947;-	0.792	0.013	0.149	ENST00000327428	GSE37401,GSM917674
FIP1L1	HEK293	chr2:74141914-74141947;-	0.792	0.013	0.149	ENST00000477685	GSE37401,GSM917674
FIP1L1	HEK293	chr2:74141914-74141947;-	0.792	0.013	0.149	ENST00000484655	GSE37401,GSM917674
FIP1L1	HEK293	chr2:74141914-74141947;-	0.792	0.013	0.149	ENST00000295326	GSE37401,GSM917674
FIP1L1	HEK293	chr2:74141914-74141947;-	0.792	0.013	0.149	ENST00000469676	GSE37401,GSM917674
CPSF7	HEK293	chr2:74145202-74145224;-	0.79	0.685	2.487	ENST00000327428	GSE37401,GSM917663
CPSF7	HEK293	chr2:74145202-74145224;-	0.79	0.685	2.487	ENST00000295326	GSE37401,GSM917663
LIN28B	HEK293	chr2:74135520-74135548;-	0.79	0.007	0.113	ENST00000327428	GSE46908,GSM1140829
ELAVL1	HEK293	chr2:74135502-74135538;-	0.784	0.062	0.115	ENST00000327428	GSE28865,GSM714641
CSTF2	HEK293	chr2:74135427-74135459;-	0.782	0.563	1.146	ENST00000327428	GSE37401,GSM917676
CSTF2	HEK293	chr2:74135427-74135459;-	0.782	0.563	1.146	ENST00000295326	GSE37401,GSM917676
HNRNPC	HEK293T	chr2:74141842-74141886;-	0.778	0.258	0.211	ENST00000327428	GSE56010,GSM1350196
HNRNPC	HEK293T	chr2:74141842-74141886;-	0.778	0.258	0.211	ENST00000477685	GSE56010,GSM1350196
HNRNPC	HEK293T	chr2:74141842-74141886;-	0.778	0.258	0.211	ENST00000484655	GSE56010,GSM1350196
HNRNPC	HEK293T	chr2:74141842-74141886;-	0.778	0.258	0.211	ENST00000295326	GSE56010,GSM1350196
HNRNPC	HEK293T	chr2:74141842-74141886;-	0.778	0.258	0.211	ENST00000469676	GSE56010,GSM1350196
HNRNPC	HEK293T	chr2:74144365-74144382;-	0.775	0	-0.004	ENST00000327428	GSE56010,GSM1350196
HNRNPC	HEK293T	chr2:74144365-74144382;-	0.775	0	-0.004	ENST00000477685	GSE56010,GSM1350196
HNRNPC	HEK293T	chr2:74144365-74144382;-	0.775	0	-0.004	ENST00000484655	GSE56010,GSM1350196
HNRNPC	HEK293T	chr2:74144365-74144382;-	0.775	0	-0.004	ENST00000295326	GSE56010,GSM1350196
HNRNPC	HEK293T	chr2:74144365-74144382;-	0.775	0	-0.004	ENST00000469676	GSE56010,GSM1350196

CPSF6	HEK293	chr2:74135513-74135575;-	0.774	0.07	0.221	ENST00000327428	GSE37401,GSM917665
HNRNPC	HEK293T	chr2:74144695-74144721;-	0.77	0.01	-0.298	ENST00000327428	GSE56010,GSM1350199
HNRNPC	HEK293T	chr2:74144695-74144721;-	0.77	0.01	-0.298	ENST00000477685	GSE56010,GSM1350199
HNRNPC	HEK293T	chr2:74144695-74144721;-	0.77	0.01	-0.298	ENST00000484655	GSE56010,GSM1350199
HNRNPC	HEK293T	chr2:74144695-74144721;-	0.77	0.01	-0.298	ENST00000295326	GSE56010,GSM1350199
HNRNPC	HEK293T	chr2:74144695-74144721;-	0.77	0.01	-0.298	ENST00000469676	GSE56010,GSM1350199
ELAVL1	HEK293	chr2:74135564-74135601;-	0.764	0.278	0.48	ENST00000295326	GSE28865,GSM714639
IGF2BP1	HEK293	chr2:74135526-74135558;-	0.759	0.006	0.145	ENST00000295326	GSE21578,GSM545206
CSTF2	HEK293	chr2:74142751-74142780;-	0.754	0.004	0.055	ENST00000327428	GSE37401,GSM917676
CSTF2	HEK293	chr2:74142751-74142780;-	0.754	0.004	0.055	ENST00000477685	GSE37401,GSM917676
CSTF2	HEK293	chr2:74142751-74142780;-	0.754	0.004	0.055	ENST00000484655	GSE37401,GSM917676
CSTF2	HEK293	chr2:74142751-74142780;-	0.754	0.004	0.055	ENST00000295326	GSE37401,GSM917676
CSTF2	HEK293	chr2:74142751-74142780;-	0.754	0.004	0.055	ENST00000469676	GSE37401,GSM917676
HNRNPC	HEK293T	chr2:74141728-74141742;-	0.753	0.004	0.069	ENST00000327428	GSE56010,GSM1350200
HNRNPC	HEK293T	chr2:74141728-74141742;-	0.753	0.004	0.069	ENST00000477685	GSE56010,GSM1350200
HNRNPC	HEK293T	chr2:74141728-74141742;-	0.753	0.004	0.069	ENST00000484655	GSE56010,GSM1350200
HNRNPC	HEK293T	chr2:74141728-74141742;-	0.753	0.004	0.069	ENST00000295326	GSE56010,GSM1350200
HNRNPC	HEK293T	chr2:74141728-74141742;-	0.753	0.004	0.069	ENST00000469676	GSE56010,GSM1350200
HNRNPC	HEK293T	chr2:74143101-74143120;-	0.749	0.002	-0.314	ENST00000327428	GSE56010,GSM1350198
HNRNPC	HEK293T	chr2:74143101-74143120;-	0.749	0.002	-0.314	ENST00000477685	GSE56010,GSM1350198
HNRNPC	HEK293T	chr2:74143101-74143120;-	0.749	0.002	-0.314	ENST00000484655	GSE56010,GSM1350198
HNRNPC	HEK293T	chr2:74143101-74143120;-	0.749	0.002	-0.314	ENST00000295326	GSE56010,GSM1350198
HNRNPC	HEK293T	chr2:74143101-74143120;-	0.749	0.002	-0.314	ENST00000469676	GSE56010,GSM1350198
HNRNPC	HEK293T	chr2:74141579-74141605;-	0.748	0.002	-0.068	ENST00000327428	GSE56010,GSM1350201

HNRNPC	HEK293T	chr2:74141579-74141605;-	0.748	0.002	-0.068	ENST00000477685	GSE56010,GSM1350201
HNRNPC	HEK293T	chr2:74141579-74141605;-	0.748	0.002	-0.068	ENST00000484655	GSE56010,GSM1350201
HNRNPC	HEK293T	chr2:74141579-74141605;-	0.748	0.002	-0.068	ENST00000295326	GSE56010,GSM1350201
HNRNPC	HEK293T	chr2:74141579-74141605;-	0.748	0.002	-0.068	ENST00000469676	GSE56010,GSM1350201
HNRNPC	HEK293T	chr2:74141864-74141886;-	0.746	0.001	-0.137	ENST00000327428	GSE56010,GSM1350198
HNRNPC	HEK293T	chr2:74141864-74141886;-	0.746	0.001	-0.137	ENST00000477685	GSE56010,GSM1350198
HNRNPC	HEK293T	chr2:74141864-74141886;-	0.746	0.001	-0.137	ENST00000484655	GSE56010,GSM1350198
HNRNPC	HEK293T	chr2:74141864-74141886;-	0.746	0.001	-0.137	ENST00000295326	GSE56010,GSM1350198
HNRNPC	HEK293T	chr2:74141864-74141886;-	0.746	0.001	-0.137	ENST00000469676	GSE56010,GSM1350198
HNRNPC	HEK293T	chr2:74136884-74136907;-	0.744	0.006	-0.021	ENST00000327428	GSE56010,GSM1350196
HNRNPC	HEK293T	chr2:74136884-74136907;-	0.744	0.006	-0.021	ENST00000477685	GSE56010,GSM1350196
HNRNPC	HEK293T	chr2:74136884-74136907;-	0.744	0.006	-0.021	ENST00000484655	GSE56010,GSM1350196
HNRNPC	HEK293T	chr2:74136884-74136907;-	0.744	0.006	-0.021	ENST00000295326	GSE56010,GSM1350196
HNRNPC	HEK293T	chr2:74136884-74136907;-	0.744	0.006	-0.021	ENST00000469676	GSE56010,GSM1350196
HNRNPC	HEK293T	chr2:74143103-74143120;-	0.743	0.002	-0.248	ENST00000327428	GSE56010,GSM1350199
HNRNPC	HEK293T	chr2:74143103-74143120;-	0.743	0.002	-0.248	ENST00000477685	GSE56010,GSM1350199
HNRNPC	HEK293T	chr2:74143103-74143120;-	0.743	0.002	-0.248	ENST00000484655	GSE56010,GSM1350199
HNRNPC	HEK293T	chr2:74143103-74143120;-	0.743	0.002	-0.248	ENST00000295326	GSE56010,GSM1350199
HNRNPC	HEK293T	chr2:74143103-74143120;-	0.743	0.002	-0.248	ENST00000469676	GSE56010,GSM1350199
CPSF6	HEK293	chr2:74145201-74145237;-	0.742	0.791	2.72	ENST00000327428	GSE37401,GSM917665
CPSF6	HEK293	chr2:74145201-74145237;-	0.742	0.791	2.72	ENST00000295326	GSE37401,GSM917665
HNRNPC	HEK293T	chr2:74135539-74135573;-	0.741	0.105	0.293	ENST00000295326	GSE56010,GSM1350200
HNRNPC	HEK293T	chr2:74142105-74142128;-	0.731	0.002	-0.32	ENST00000327428	GSE56010,GSM1350198
HNRNPC	HEK293T	chr2:74142105-74142128;-	0.731	0.002	-0.32	ENST00000477685	GSE56010,GSM1350198

HNRNPC	HEK293T	chr2:74142105-74142128;-	0.731	0.002	-0.32	ENST00000484655	GSE56010,GSM1350198
HNRNPC	HEK293T	chr2:74142105-74142128;-	0.731	0.002	-0.32	ENST00000295326	GSE56010,GSM1350198
HNRNPC	HEK293T	chr2:74142105-74142128;-	0.731	0.002	-0.32	ENST00000469676	GSE56010,GSM1350198
HNRNPC	HEK293T	chr2:74145272-74145290;-	0.73	0.554	1.618	ENST00000327428	GSE56010,GSM1350196
HNRNPC	HEK293T	chr2:74145272-74145290;-	0.73	0.554	1.618	ENST00000295326	GSE56010,GSM1350196
HNRNPC	HEK293T	chr2:74144694-74144706;-	0.727	0.017	-0.015	ENST00000327428	GSE56010,GSM1350197
HNRNPC	HEK293T	chr2:74144694-74144706;-	0.727	0.017	-0.015	ENST00000477685	GSE56010,GSM1350197
HNRNPC	HEK293T	chr2:74144694-74144706;-	0.727	0.017	-0.015	ENST00000484655	GSE56010,GSM1350197
HNRNPC	HEK293T	chr2:74144694-74144706;-	0.727	0.017	-0.015	ENST00000295326	GSE56010,GSM1350197
HNRNPC	HEK293T	chr2:74144694-74144706;-	0.727	0.017	-0.015	ENST00000469676	GSE56010,GSM1350197
HNRNPC	HEK293T	chr2:74141142-74141166;-	0.726	0.001	-0.101	ENST00000327428	GSE56010,GSM1350197
HNRNPC	HEK293T	chr2:74141142-74141166;-	0.726	0.001	-0.101	ENST00000477685	GSE56010,GSM1350197
HNRNPC	HEK293T	chr2:74141142-74141166;-	0.726	0.001	-0.101	ENST00000484655	GSE56010,GSM1350197
HNRNPC	HEK293T	chr2:74141142-74141166;-	0.726	0.001	-0.101	ENST00000295326	GSE56010,GSM1350197
HNRNPC	HEK293T	chr2:74141142-74141166;-	0.726	0.001	-0.101	ENST00000469676	GSE56010,GSM1350197
HNRNPC	HEK293T	chr2:74140407-74140440;-	0.721	0.004	0.198	ENST00000327428	GSE56010,GSM1350199
HNRNPC	HEK293T	chr2:74140407-74140440;-	0.721	0.004	0.198	ENST00000477685	GSE56010,GSM1350199
HNRNPC	HEK293T	chr2:74140407-74140440;-	0.721	0.004	0.198	ENST00000484655	GSE56010,GSM1350199
HNRNPC	HEK293T	chr2:74140407-74140440;-	0.721	0.004	0.198	ENST00000295326	GSE56010,GSM1350199
HNRNPC	HEK293T	chr2:74140407-74140440;-	0.721	0.004	0.198	ENST00000469676	GSE56010,GSM1350199
HNRNPC	HEK293T	chr2:74144814-74144844;-	0.717	0.001	-0.075	ENST00000327428	GSE56010,GSM1350197
HNRNPC	HEK293T	chr2:74144814-74144844;-	0.717	0.001	-0.075	ENST00000477685	GSE56010,GSM1350197
HNRNPC	HEK293T	chr2:74144814-74144844;-	0.717	0.001	-0.075	ENST00000484655	GSE56010,GSM1350197
HNRNPC	HEK293T	chr2:74144814-74144844;-	0.717	0.001	-0.075	ENST00000295326	GSE56010,GSM1350197

HNRNPC	HEK293T	chr2:74144814-74144844;-	0.717	0.001	-0.075	ENST00000469676	GSE56010,GSM1350197
HNRNPC	HEK293T	chr2:74135564-74135598;-	0.715	0.239	0.359	ENST00000295326	GSE56010,GSM1350199
CSTF2	HEK293	chr2:74138326-74138336;-	0.713	0.001	-0.176	ENST00000327428	GSE37401,GSM917676
CSTF2	HEK293	chr2:74138326-74138336;-	0.713	0.001	-0.176	ENST00000477685	GSE37401,GSM917676
CSTF2	HEK293	chr2:74138326-74138336;-	0.713	0.001	-0.176	ENST00000484655	GSE37401,GSM917676
CSTF2	HEK293	chr2:74138326-74138336;-	0.713	0.001	-0.176	ENST00000295326	GSE37401,GSM917676
CSTF2	HEK293	chr2:74138326-74138336;-	0.713	0.001	-0.176	ENST00000469676	GSE37401,GSM917676
HNRNPC	HEK293T	chr2:74140755-74140780;-	0.713	0.001	-0.352	ENST00000327428	GSE56010,GSM1350197
HNRNPC	HEK293T	chr2:74140755-74140780;-	0.713	0.001	-0.352	ENST00000477685	GSE56010,GSM1350197
HNRNPC	HEK293T	chr2:74140755-74140780;-	0.713	0.001	-0.352	ENST00000484655	GSE56010,GSM1350197
HNRNPC	HEK293T	chr2:74140755-74140780;-	0.713	0.001	-0.352	ENST00000295326	GSE56010,GSM1350197
HNRNPC	HEK293T	chr2:74140755-74140780;-	0.713	0.001	-0.352	ENST00000469676	GSE56010,GSM1350197
HNRNPC	HEK293T	chr2:74144356-74144385;-	0.712	0.001	0.013	ENST00000327428	GSE56010,GSM1350199
HNRNPC	HEK293T	chr2:74144356-74144385;-	0.712	0.001	0.013	ENST00000477685	GSE56010,GSM1350199
HNRNPC	HEK293T	chr2:74144356-74144385;-	0.712	0.001	0.013	ENST00000484655	GSE56010,GSM1350199
HNRNPC	HEK293T	chr2:74144356-74144385;-	0.712	0.001	0.013	ENST00000295326	GSE56010,GSM1350199
HNRNPC	HEK293T	chr2:74144356-74144385;-	0.712	0.001	0.013	ENST00000469676	GSE56010,GSM1350199
HNRNPC	HEK293T	chr2:74139256-74139275;-	0.704	0.002	-0.11	ENST00000327428	GSE56010,GSM1350199
HNRNPC	HEK293T	chr2:74139256-74139275;-	0.704	0.002	-0.11	ENST00000477685	GSE56010,GSM1350199
HNRNPC	HEK293T	chr2:74139256-74139275;-	0.704	0.002	-0.11	ENST00000484655	GSE56010,GSM1350199
HNRNPC	HEK293T	chr2:74139256-74139275;-	0.704	0.002	-0.11	ENST00000295326	GSE56010,GSM1350199
HNRNPC	HEK293T	chr2:74139256-74139275;-	0.704	0.002	-0.11	ENST00000469676	GSE56010,GSM1350199
HNRNPC	HEK293T	chr2:74141843-74141878;-	0.704	0.313	0.374	ENST00000327428	GSE56010,GSM1350197
HNRNPC	HEK293T	chr2:74141843-74141878;-	0.704	0.313	0.374	ENST00000477685	GSE56010,GSM1350197

HNRNPC	HEK293T	chr2:74141843-74141878;-	0.704	0.313	0.374	ENST00000484655	GSE56010,GSM1350197
HNRNPC	HEK293T	chr2:74141843-74141878;-	0.704	0.313	0.374	ENST00000295326	GSE56010,GSM1350197
HNRNPC	HEK293T	chr2:74141843-74141878;-	0.704	0.313	0.374	ENST00000469676	GSE56010,GSM1350197
ELAVL1	HEK293	chr2:74140400-74140429;-	0.701	0.005	0.206	ENST00000327428	GSE28865,GSM714639
ELAVL1	HEK293	chr2:74140400-74140429;-	0.701	0.005	0.206	ENST00000477685	GSE28865,GSM714639
ELAVL1	HEK293	chr2:74140400-74140429;-	0.701	0.005	0.206	ENST00000484655	GSE28865,GSM714639
ELAVL1	HEK293	chr2:74140400-74140429;-	0.701	0.005	0.206	ENST00000295326	GSE28865,GSM714639
ELAVL1	HEK293	chr2:74140400-74140429;-	0.701	0.005	0.206	ENST00000469676	GSE28865,GSM714639
HNRNPC	HEK293T	chr2:74145255-74145296;-	0.7	0.642	2.071	ENST00000327428	GSE56010,GSM1350199
HNRNPC	HEK293T	chr2:74145255-74145296;-	0.7	0.642	2.071	ENST00000295326	GSE56010,GSM1350199
CPSF6	HEK293	chr2:74135433-74135472;-	0.699	0.441	0.982	ENST00000327428	GSE37401,GSM917664
CPSF6	HEK293	chr2:74135433-74135472;-	0.699	0.441	0.982	ENST00000295326	GSE37401,GSM917664
HNRNPC	HEK293T	chr2:74140757-74140785;-	0.698	0	-0.493	ENST00000327428	GSE56010,GSM1350196
HNRNPC	HEK293T	chr2:74140757-74140785;-	0.698	0	-0.493	ENST00000477685	GSE56010,GSM1350196
HNRNPC	HEK293T	chr2:74140757-74140785;-	0.698	0	-0.493	ENST00000484655	GSE56010,GSM1350196
HNRNPC	HEK293T	chr2:74140757-74140785;-	0.698	0	-0.493	ENST00000295326	GSE56010,GSM1350196
HNRNPC	HEK293T	chr2:74140757-74140785;-	0.698	0	-0.493	ENST00000469676	GSE56010,GSM1350196
HNRNPC	HEK293T	chr2:74144965-74145011;-	0.697	0.002	-0.041	ENST00000327428	GSE56010,GSM1350197
HNRNPC	HEK293T	chr2:74144965-74145011;-	0.697	0.002	-0.041	ENST00000477685	GSE56010,GSM1350197
HNRNPC	HEK293T	chr2:74144965-74145011;-	0.697	0.002	-0.041	ENST00000484655	GSE56010,GSM1350197
HNRNPC	HEK293T	chr2:74144965-74145011;-	0.697	0.002	-0.041	ENST00000295326	GSE56010,GSM1350197
HNRNPC	HEK293T	chr2:74144965-74145011;-	0.697	0.002	-0.041	ENST00000469676	GSE56010,GSM1350197
HNRNPC	HEK293T	chr2:74135575-74135630;-	0.691	0.598	1.879	ENST00000295326	GSE56010,GSM1350201
CSTF2T	HEK293	chr2:74135523-74135555;-	0.691	0.006	0.146	ENST00000327428	GSE37401,GSM917677

HNRNPC	HEK293T	chr2:74142726-74142748;-	0.69	0.007	-0.004	ENST00000327428	GSE56010,GSM1350197
HNRNPC	HEK293T	chr2:74142726-74142748;-	0.69	0.007	-0.004	ENST00000477685	GSE56010,GSM1350197
HNRNPC	HEK293T	chr2:74142726-74142748;-	0.69	0.007	-0.004	ENST00000484655	GSE56010,GSM1350197
HNRNPC	HEK293T	chr2:74142726-74142748;-	0.69	0.007	-0.004	ENST00000295326	GSE56010,GSM1350197
HNRNPC	HEK293T	chr2:74142726-74142748;-	0.69	0.007	-0.004	ENST00000469676	GSE56010,GSM1350197
HNRNPC	HEK293T	chr2:74140334-74140350;-	0.684	0.001	-0.286	ENST00000327428	GSE56010,GSM1350199
HNRNPC	HEK293T	chr2:74140334-74140350;-	0.684	0.001	-0.286	ENST00000477685	GSE56010,GSM1350199
HNRNPC	HEK293T	chr2:74140334-74140350;-	0.684	0.001	-0.286	ENST00000484655	GSE56010,GSM1350199
HNRNPC	HEK293T	chr2:74140334-74140350;-	0.684	0.001	-0.286	ENST00000295326	GSE56010,GSM1350199
HNRNPC	HEK293T	chr2:74140334-74140350;-	0.684	0.001	-0.286	ENST00000469676	GSE56010,GSM1350199
HNRNPC	HEK293T	chr2:74144985-74145029;-	0.683	0	-0.188	ENST00000327428	GSE56010,GSM1350199
HNRNPC	HEK293T	chr2:74144985-74145029;-	0.683	0	-0.188	ENST00000477685	GSE56010,GSM1350199
HNRNPC	HEK293T	chr2:74144985-74145029;-	0.683	0	-0.188	ENST00000484655	GSE56010,GSM1350199
HNRNPC	HEK293T	chr2:74144985-74145029;-	0.683	0	-0.188	ENST00000295326	GSE56010,GSM1350199
HNRNPC	HEK293T	chr2:74144985-74145029;-	0.683	0	-0.188	ENST00000469676	GSE56010,GSM1350199
ELAVL1	HEK293	chr2:74135493-74135517;-	0.678	0.456	0.528	ENST00000327428	GSE50989,GSM1234284
ELAVL1	HEK293	chr2:74135493-74135517;-	0.678	0.456	0.528	ENST00000295326	GSE50989,GSM1234284
CPSF7	HEK293	chr2:74135509-74135568;-	0.673	0.049	0.213	ENST00000327428	GSE37401,GSM917663
HNRNPC	HEK293T	chr2:74140325-74140347;-	0.672	0.02	0.07	ENST00000327428	GSE56010,GSM1350201
HNRNPC	HEK293T	chr2:74140325-74140347;-	0.672	0.02	0.07	ENST00000477685	GSE56010,GSM1350201
HNRNPC	HEK293T	chr2:74140325-74140347;-	0.672	0.02	0.07	ENST00000484655	GSE56010,GSM1350201
HNRNPC	HEK293T	chr2:74140325-74140347;-	0.672	0.02	0.07	ENST00000295326	GSE56010,GSM1350201
HNRNPC	HEK293T	chr2:74140325-74140347;-	0.672	0.02	0.07	ENST00000469676	GSE56010,GSM1350201
HNRNPC	HEK293T	chr2:74141730-74141752;-	0.67	0.005	0.153	ENST00000327428	GSE56010,GSM1350199

HNRNPC	HEK293T	chr2:74141730-74141752;-	0.67	0.005	0.153	ENST00000477685	GSE56010,GSM1350199
HNRNPC	HEK293T	chr2:74141730-74141752;-	0.67	0.005	0.153	ENST00000484655	GSE56010,GSM1350199
HNRNPC	HEK293T	chr2:74141730-74141752;-	0.67	0.005	0.153	ENST00000295326	GSE56010,GSM1350199
HNRNPC	HEK293T	chr2:74141730-74141752;-	0.67	0.005	0.153	ENST00000469676	GSE56010,GSM1350199
HNRNPC	HEK293T	chr2:74137803-74137816;-	0.662	0.01	0.157	ENST00000327428	GSE56010,GSM1350196
HNRNPC	HEK293T	chr2:74137803-74137816;-	0.662	0.01	0.157	ENST00000477685	GSE56010,GSM1350196
HNRNPC	HEK293T	chr2:74137803-74137816;-	0.662	0.01	0.157	ENST00000484655	GSE56010,GSM1350196
HNRNPC	HEK293T	chr2:74137803-74137816;-	0.662	0.01	0.157	ENST00000295326	GSE56010,GSM1350196
HNRNPC	HEK293T	chr2:74137803-74137816;-	0.662	0.01	0.157	ENST00000469676	GSE56010,GSM1350196
HNRNPC	HEK293T	chr2:74135599-74135615;-	0.659	0.876	3.194	ENST00000327428	GSE56010,GSM1350196
HNRNPC	HEK293T	chr2:74135599-74135615;-	0.659	0.876	3.194	ENST00000295326	GSE56010,GSM1350196
ELAVL1	HEK293	chr2:74144942-74144963;-	0.653	0	-0.088	ENST00000327428	GSE28865,GSM714639
ELAVL1	HEK293	chr2:74144942-74144963;-	0.653	0	-0.088	ENST00000477685	GSE28865,GSM714639
ELAVL1	HEK293	chr2:74144942-74144963;-	0.653	0	-0.088	ENST00000484655	GSE28865,GSM714639
ELAVL1	HEK293	chr2:74144942-74144963;-	0.653	0	-0.088	ENST00000295326	GSE28865,GSM714639
ELAVL1	HEK293	chr2:74144942-74144963;-	0.653	0	-0.088	ENST00000469676	GSE28865,GSM714639
HNRNPC	HEK293T	chr2:74135533-74135543;-	0.648	0	-0.104	ENST00000295326	GSE56010,GSM1350196
HNRNPC	HEK293T	chr2:74141143-74141161;-	0.642	0.001	-0.163	ENST00000327428	GSE56010,GSM1350196
HNRNPC	HEK293T	chr2:74141143-74141161;-	0.642	0.001	-0.163	ENST00000477685	GSE56010,GSM1350196
HNRNPC	HEK293T	chr2:74141143-74141161;-	0.642	0.001	-0.163	ENST00000484655	GSE56010,GSM1350196
HNRNPC	HEK293T	chr2:74141143-74141161;-	0.642	0.001	-0.163	ENST00000295326	GSE56010,GSM1350196
HNRNPC	HEK293T	chr2:74141143-74141161;-	0.642	0.001	-0.163	ENST00000469676	GSE56010,GSM1350196
ELAVL1	HEK293	chr2:74137771-74137792;-	0.629	0.001	-0.252	ENST00000327428	GSE28865,GSM714639
ELAVL1	HEK293	chr2:74137771-74137792;-	0.629	0.001	-0.252	ENST00000477685	GSE28865,GSM714639

ELAVL1	HEK293	chr2:74137771-74137792;-	0.629	0.001	-0.252	ENST00000484655	GSE28865,GSM714639
ELAVL1	HEK293	chr2:74137771-74137792;-	0.629	0.001	-0.252	ENST00000295326	GSE28865,GSM714639
ELAVL1	HEK293	chr2:74137771-74137792;-	0.629	0.001	-0.252	ENST00000469676	GSE28865,GSM714639
ELAVL1	HEK293	chr2:74135493-74135516;-	0.625	0.476	0.539	ENST00000327428	GSE29780,GSM738185
ELAVL1	HEK293	chr2:74135493-74135516;-	0.625	0.476	0.539	ENST00000295326	GSE29780,GSM738185
IGF2BP3	HEK293	chr2:74135493-74135538;-	0.62	0.248	0.344	ENST00000327428	GSE21578,GSM545209
CPSF6	HEK293	chr2:74135453-74135472;-	0.618	0.074	0.633	ENST00000327428	GSE37401,GSM917665
CPSF6	HEK293	chr2:74135453-74135472;-	0.618	0.074	0.633	ENST00000295326	GSE37401,GSM917665
HNRNPC	HEK293T	chr2:74140788-74140815;-	0.617	0.043	0.246	ENST00000327428	GSE56010,GSM1350197
HNRNPC	HEK293T	chr2:74140788-74140815;-	0.617	0.043	0.246	ENST00000477685	GSE56010,GSM1350197
HNRNPC	HEK293T	chr2:74140788-74140815;-	0.617	0.043	0.246	ENST00000484655	GSE56010,GSM1350197
HNRNPC	HEK293T	chr2:74140788-74140815;-	0.617	0.043	0.246	ENST00000295326	GSE56010,GSM1350197
HNRNPC	HEK293T	chr2:74140788-74140815;-	0.617	0.043	0.246	ENST00000469676	GSE56010,GSM1350197
HNRNPC	HEK293T	chr2:74141865-74141893;-	0.616	0.001	-0.079	ENST00000327428	GSE56010,GSM1350199
HNRNPC	HEK293T	chr2:74141865-74141893;-	0.616	0.001	-0.079	ENST00000477685	GSE56010,GSM1350199
HNRNPC	HEK293T	chr2:74141865-74141893;-	0.616	0.001	-0.079	ENST00000484655	GSE56010,GSM1350199
HNRNPC	HEK293T	chr2:74141865-74141893;-	0.616	0.001	-0.079	ENST00000295326	GSE56010,GSM1350199
HNRNPC	HEK293T	chr2:74141865-74141893;-	0.616	0.001	-0.079	ENST00000469676	GSE56010,GSM1350199
CPSF6	HEK293	chr2:74135434-74135452;-	0.602	0.821	1.347	ENST00000327428	GSE37401,GSM917665
CPSF6	HEK293	chr2:74135434-74135452;-	0.602	0.821	1.347	ENST00000295326	GSE37401,GSM917665
ZC3H7B	HEK293	chr2:74135493-74135520;-	0.6	0.406	0.488	ENST00000327428	GSE38201,GSM936510
ZC3H7B	HEK293	chr2:74135493-74135520;-	0.6	0.406	0.488	ENST00000295326	GSE38201,GSM936510
HNRNPC	HEK293T	chr2:74140614-74140627;-	0.6	0.001	0.093	ENST00000327428	GSE56010,GSM1350199
HNRNPC	HEK293T	chr2:74140614-74140627;-	0.6	0.001	0.093	ENST00000477685	GSE56010,GSM1350199

HNRNPC	HEK293T	chr2:74140614-74140627;-	0.6	0.001	0.093	ENST00000484655	GSE56010,GSM1350199
HNRNPC	HEK293T	chr2:74140614-74140627;-	0.6	0.001	0.093	ENST00000295326	GSE56010,GSM1350199
HNRNPC	HEK293T	chr2:74140614-74140627;-	0.6	0.001	0.093	ENST00000469676	GSE56010,GSM1350199
HNRNPC	HEK293T	chr2:74144388-74144414;-	0.592	0.002	0.031	ENST00000327428	GSE56010,GSM1350199
HNRNPC	HEK293T	chr2:74144388-74144414;-	0.592	0.002	0.031	ENST00000477685	GSE56010,GSM1350199
HNRNPC	HEK293T	chr2:74144388-74144414;-	0.592	0.002	0.031	ENST00000484655	GSE56010,GSM1350199
HNRNPC	HEK293T	chr2:74144388-74144414;-	0.592	0.002	0.031	ENST00000295326	GSE56010,GSM1350199
HNRNPC	HEK293T	chr2:74144388-74144414;-	0.592	0.002	0.031	ENST00000469676	GSE56010,GSM1350199
IGF2BP2	HEK293	chr2:74135495-74135517;-	0.583	0.407	0.455	ENST00000327428	GSE21578,GSM545208
IGF2BP2	HEK293	chr2:74135495-74135517;-	0.583	0.407	0.455	ENST00000295326	GSE21578,GSM545208
LIN28B	HEK293	chr2:74135493-74135517;-	0.552	0.456	0.528	ENST00000327428	GSE46908,GSM1140829
LIN28B	HEK293	chr2:74135493-74135517;-	0.552	0.456	0.528	ENST00000295326	GSE46908,GSM1140829
HNRNPC	HEK293T	chr2:74141727-74141743;-	0.552	0.004	-0.003	ENST00000327428	GSE56010,GSM1350201
HNRNPC	HEK293T	chr2:74141727-74141743;-	0.552	0.004	-0.003	ENST00000477685	GSE56010,GSM1350201
HNRNPC	HEK293T	chr2:74141727-74141743;-	0.552	0.004	-0.003	ENST00000484655	GSE56010,GSM1350201
HNRNPC	HEK293T	chr2:74141727-74141743;-	0.552	0.004	-0.003	ENST00000295326	GSE56010,GSM1350201
HNRNPC	HEK293T	chr2:74141727-74141743;-	0.552	0.004	-0.003	ENST00000469676	GSE56010,GSM1350201

Supplement table5-E2F7-HNRNPC potential binding sites predicted by hTFtarget

TF	Pattern name	Source	Sequence name	Start	Stop	Strand	Score	P value	Q value	Matched Motif
E2F7		database	hg38_refGene_NM_031314	1518	1530	-	16.9106	1.67E-06	0.00724	AAAAGCGCGAAAT
E2F7	m-dataset-832-1	hTFtarget	hg38_refGene_NM_031314	1598	1613	+	18.3158	4.93E-07	0.00204	TCCCCGCCCCGCGCA
E2F7	m-dataset-830-1	hTFtarget	hg38_refGene_NM_031314	1598	1613	+	17.9	5.11E-07	0.00217	TCCCCGCCCCGCGCA
E2F7	m-dataset-831-2	hTFtarget	hg38_refGene_NM_031314	1599	1610	+	17.6316	7.16E-07	0.00301	CCCCGCCCCCGC
E2F7	m-dataset-829-1	hTFtarget	hg38_refGene_NM_031314	1596	1611	+	17.3286	9.32E-07	0.00391	TTTCCCCGCCCCGCG
E2F7	m-dataset-831-1	hTFtarget	hg38_refGene_NM_031314	1598	1613	-	16.9714	1.11E-06	0.0046	TGCGCGGGGCGGGGA
E2F7	m-dataset-832-1	hTFtarget	hg38_refGene_NM_031314	1964	1979	-	15.7632	2.39E-06	0.00495	TCCCCGCCCATTCCT
E2F7	m-dataset-829-3	hTFtarget	hg38_refGene_NM_031314	1600	1608	-	16.2105	3.34E-06	0.0137	GGGGGCGGG
E2F7	m-dataset-832-1	hTFtarget	hg38_refGene_NM_031314	1592	1607	+	14.1316	5.46E-06	0.00754	ACCCTTTCCCCGCCCC
E2F7	m-dataset-829-3	hTFtarget	hg38_refGene_NM_031314	2132	2140	-	13.8553	1.51E-05	0.0311	AGGGGAGGG
E2F7	m-dataset-826-1	hTFtarget	hg38_refGene_NM_031314	1596	1607	-	13.7895	1.53E-05	0.0621	GGGGCGGGGAAA
E2F7	m-dataset-831-1	hTFtarget	hg38_refGene_NM_031314	1964	1979	+	11.2714	2.07E-05	0.0396	AGGAATGGGGCGGGGA
E2F7	m-dataset-829-1	hTFtarget	hg38_refGene_NM_031314	1966	1981	-	10.7	2.76E-05	0.0405	AGTCCCCGCCCATTC
E2F7	m-dataset-831-2	hTFtarget	hg38_refGene_NM_031314	2131	2142	+	11.9474	2.77E-05	0.0499	TCCCTCCCCTTC
E2F7	m-dataset-831-1	hTFtarget	hg38_refGene_NM_031314	1124	1139	+	10.4714	2.87E-05	0.0396	GTGACGGGGGTAGGTA
E2F7	m-dataset-829-1	hTFtarget	hg38_refGene_NM_031314	1126	1141	-	10.5857	2.89E-05	0.0405	CCTACCTACCCCGTC
E2F7	m-dataset-829-3	hTFtarget	hg38_refGene_NM_031314	1157	1165	+	12.6842	3.16E-05	0.0423	AGAGGAGGG
E2F7	m-dataset-831-2	hTFtarget	hg38_refGene_NM_031314	935	946	-	11.3421	3.71E-05	0.0499	CTCCGCCTCCCG
E2F7	m-dataset-829-3	hTFtarget	hg38_refGene_NM_031314	792	800	+	12.0395	4.12E-05	0.0423	AGAGGCGGG
E2F7	m-dataset-831-2	hTFtarget	hg38_refGene_NM_031314	546	557	-	10.7632	4.76E-05	0.0499	CTCCGCCTCCTA
E2F7	m-dataset-832-1	hTFtarget	hg38_refGene_NM_031314	384	399	-	8.44737	5.08E-05	0.047	CGCCGCCTCAGCCTT
E2F7	m-dataset-830-1	hTFtarget	hg38_refGene_NM_031314	2130	2145	+	10.2	5.81E-05	0.123	CTCCCTCCCCTTCTTG
E2F7	m-dataset-832-1	hTFtarget	hg38_refGene_NM_031314	932	947	-	7.94737	5.99E-05	0.047	CCTCCGCCTCCCGGGT

E2F7	m-dataset-826-1	hTFtarget	hg38_refGene_NM_031314	1970	1981	+	10.8289	6.23E-05	0.126	GGGCGGGGACT
E2F7	m-dataset-830-2	hTFtarget	hg38_refGene_NM_031314	1596	1607	-	10.6184	6.59E-05	0.27	GGGCGGGGAAA
E2F7	m-dataset-831-1	hTFtarget	hg38_refGene_NM_031314	935	950	+	8.21429	6.67E-05	0.069	CGGGAGGCGGAGGTTG
E2F7	m-dataset-831-2	hTFtarget	hg38_refGene_NM_031314	784	795	-	9.82895	7.06E-05	0.0593	CTCTGCCTCCCA
E2F7	m-dataset-832-2	hTFtarget	hg38_refGene_NM_031314	912	923	+	9.67105	7.08E-05	0.201	GAGGCAGGAAAA
E2F7	m-dataset-832-1	hTFtarget	hg38_refGene_NM_031314	543	558	-	7.40789	7.12E-05	0.047	CCTCCGCCTCCTAGGT
E2F7	m-dataset-832-1	hTFtarget	hg38_refGene_NM_031314	906	921	-	6.90789	8.33E-05	0.047	TTCTGCCTCAGCCTC
E2F7	m-dataset-832-1	hTFtarget	hg38_refGene_NM_031314	1389	1404	-	6.63158	9.08E-05	0.047	TTCCAACCCAGACCC
E2F7	m-dataset-832-2	hTFtarget	hg38_refGene_NM_031314	1993	2004	+	8.82895	9.41E-05	0.201	TCGGCGGCAGAG
E2F7	m-dataset-830-1	hTFtarget	hg38_refGene_NM_031314	1584	1599	+	9.04286	9.65E-05	0.136	GCCCCTCAACCCTTTC