

Bingxin LI, Xiangfei ZHAO, Xuefeng ZHANG, Xin ZHAO, 2022. Observer-based control for fractional-order singular systems with order α ($0 < \alpha < 1$) and input delay. *Frontiers of Information Technology & Electronic Engineering*, 23(12):1862-1870. <https://doi.org/10.1631/FITEE.2200294>

Observer-based control for fractional-order singular systems with order α ($0 < \alpha < 1$) and input delay

Key words: Observer-based control; Singular systems; Fractional order; Input delay; Linear matrix inequality

Corresponding author: Xin ZHAO
E-mail: zhaoxin@nankai.edu.cn

Motivation

Although a lot of papers have been published for input delay, it is worth mentioning that most research is mainly in the field of nonsingular fractional-order systems with input delay. For general singular systems with input delay, these were rarely studied. In short, the contributions are as follows:

1. Using the Smith predictor, observer-based control is first studied for fractional-order singular systems with order α ($0 < \alpha < 1$) and input delay.
2. The necessary and sufficient condition based on nonstrict LMI is presented. Then, the condition based on strict LMI is improved.

System model

For the following fractional-order singular system (1), define the state transformation (2)

$$\begin{cases} ED^\alpha x(t) = Ax(t) + B_1u(t) + B_2u(t - \tau), \\ y(t) = Cx(t), \end{cases} \quad (1)$$

$$Ez(t) = Ex(t) + \int_{t-\tau}^t e_\alpha^{A(t-s-\tau)} B_2u(s)ds. \quad (2)$$

Using the properties of fractional calculus, we obtain

$$\bar{E}D^\alpha \bar{z}(t) = \bar{A}\bar{z}(t), \quad (9)$$

$$\begin{cases} \bar{E} = \begin{bmatrix} E & 0 \\ 0 & E \end{bmatrix}, \quad \bar{z}(t) = \begin{bmatrix} z(t) \\ z(t) - \hat{z}(t) \end{bmatrix}, \\ \bar{A} = \begin{bmatrix} A + \bar{B}K & -\bar{B}K \\ 0 & A - LC \end{bmatrix}. \end{cases} \quad (10)$$

Main lemma

Lemma 1 (Zhang XF and Chen, 2018) The fractional-order linear singular system $\mathbf{E}D^\alpha \mathbf{x}(t) = \mathbf{A}\mathbf{x}(t)$ with $\text{rank}(\mathbf{E}) < n$ is asymptotically admissible if and only if the following inequalities hold with two matrices \mathbf{X} and \mathbf{Y} :

$$\begin{bmatrix} \mathbf{E}\mathbf{X} & \mathbf{E}\mathbf{Y} \\ -\mathbf{E}\mathbf{Y} & \mathbf{E}\mathbf{X} \end{bmatrix} = \begin{bmatrix} \mathbf{X}^\top \mathbf{E}^\top & -\mathbf{Y}^\top \mathbf{E}^\top \\ \mathbf{Y}^\top \mathbf{E}^\top & \mathbf{X}^\top \mathbf{E}^\top \end{bmatrix} \geq 0,$$
$$a\mathbf{A}\mathbf{X} + a\mathbf{X}\mathbf{A}^\top + b\mathbf{A}\mathbf{Y} - b\mathbf{Y}\mathbf{A}^\top < 0,$$

where $a = \sin(\alpha\pi/2)$ and $b = \cos(\alpha\pi/2)$.

Main results

Theorem 1 System (9) with matrices \mathbf{K} and \mathbf{L} is asymptotically admissible, if and only if there exist matrices \mathbf{X}_1 , \mathbf{X}_2 , \mathbf{Y}_1 , \mathbf{Y}_2 , \mathbf{Z} , and \mathbf{R} such that the following inequalities hold:

$$\begin{bmatrix} EX_1 & EY_1 \\ -EY_1 & EX_1 \end{bmatrix} = \begin{bmatrix} X_1^T E^T & -Y_1^T E^T \\ Y_1^T E^T & X_1^T E^T \end{bmatrix} \geq 0, \quad (11)$$

$$\begin{bmatrix} EX_2 & EY_2 \\ -EY_2 & EX_2 \end{bmatrix} = \begin{bmatrix} X_2^T E^T & -Y_2^T E^T \\ Y_2^T E^T & X_2^T E^T \end{bmatrix} \geq 0, \quad (12)$$

$$P_1 = aX_1 + bY_1, \quad \text{sym}(P_1 A - ZC) < 0, \quad (13)$$

$$P_2 = aX_2 + bY_2, \quad \text{sym}(AP_2 + \bar{B}R) < 0, \quad (14)$$

where $a = \sin(\alpha\pi/2)$ and $b = \cos(\alpha\pi/2)$. Furthermore, \mathbf{L} and \mathbf{K} are given by

$$\mathbf{L} = P_1^{-1} \mathbf{Z}, \quad \mathbf{K} = \mathbf{R} P_2^{-1}. \quad (15)$$

Main results (Cont'd)

Remark 1 Inequalities (11) and (12) are nonstrict LMIs, which contain equality constraints. Due to round-off errors in numerical calculations, equality constraints are fragile and usually cannot be well satisfied. As a result, the strict LMI-based condition is proposed in the following theorem.

Main results (Cont'd)

Theorem 2 System (9) with matrices \mathbf{K} and \mathbf{L} is asymptotically admissible, if and only if there exist matrices \mathbf{X}_1 , \mathbf{X}_2 , \mathbf{Y}_1 , \mathbf{Y}_2 , \mathbf{Q} , \mathbf{Z} , and \mathbf{R} such that the following inequalities hold:

$$\begin{bmatrix} \mathbf{X}_1 & \mathbf{Y}_1 \\ -\mathbf{Y}_1 & \mathbf{X}_1 \end{bmatrix} > 0, \quad (24)$$

$$\begin{bmatrix} \mathbf{X}_2 & \mathbf{Y}_2 \\ -\mathbf{Y}_2 & \mathbf{X}_2 \end{bmatrix} > 0, \quad (25)$$

$$\mathbf{P}_1 = a\mathbf{X}_1 + b\mathbf{Y}_1, \quad \text{sym}(\mathbf{P}_1\mathbf{E}^T\mathbf{A} + \mathbf{S}\mathbf{Q}\mathbf{A} - \mathbf{Z}\mathbf{C}) < 0, \quad (26)$$

$$\mathbf{P}_2 = a\mathbf{X}_2 + b\mathbf{Y}_2, \quad \text{sym}(\mathbf{A}\mathbf{P}_2\mathbf{E}^T + \mathbf{A}\mathbf{S}\mathbf{Q} + \bar{\mathbf{B}}\mathbf{R}) < 0, \quad (27)$$

where $a=\sin(\alpha\pi/2)$, $b=\cos(\alpha\pi/2)$, and \mathbf{S} satisfies $\mathbf{E}\mathbf{S}=0$. Furthermore, \mathbf{L} and \mathbf{K} are given by

$$\mathbf{L} = \mathbf{P}_1^{-1}\mathbf{Z}, \quad \mathbf{K} = \mathbf{R}\mathbf{P}_2^{-1}. \quad (28)$$

Simulations

Example 1

System (9) with parameters as follows is considered:

$$E = \begin{bmatrix} 0 & -1 & 0 & -1 \\ 1 & 2 & 0 & 1 \\ -2 & -2 & 1 & -2 \\ -1 & -1 & 0 & 0 \end{bmatrix}, A = \begin{bmatrix} 1 & -1 & -1 & 1 \\ 0 & 3 & 2 & 0 \\ 2 & -5 & -1 & -5 \\ 1 & -2 & -1 & -1 \end{bmatrix},$$

$$B_1 = \begin{bmatrix} 1 \\ 1 \\ 1 \\ 2 \end{bmatrix}, B_2 = \begin{bmatrix} 1 \\ 1 \\ 0 \\ 1 \end{bmatrix},$$

$$C = [1 \ 2 \ 1 \ -1], \alpha = \frac{1}{3}, \tau = 0.5.$$



Choose $S = \begin{bmatrix} -1 \\ 1 \\ -2 \\ -1 \end{bmatrix}$

Then, solving inequalities (24)–(27) and Eq. (28) in Theorem 2, we can obtain the feasible solutions as follows:

$$K = [0.3225 \ -0.6320 \ -0.1244 \ 0.0123],$$

$$L = [-6.3313 \ -8.6988 \ 1.6989 \ -7.6680]^T.$$

Simulations (Cont'd)

Example 1

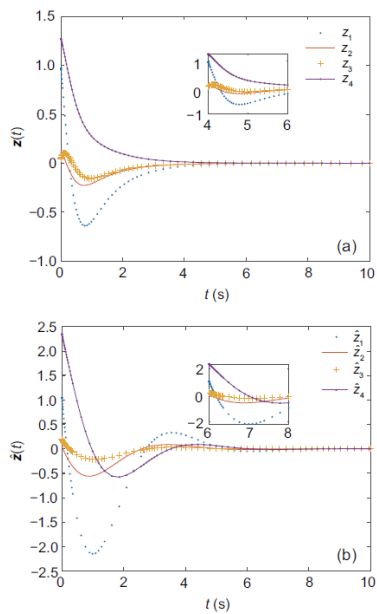


Fig. 1 System states $z(t)$ (a) and observer states $\hat{z}(t)$ (b)

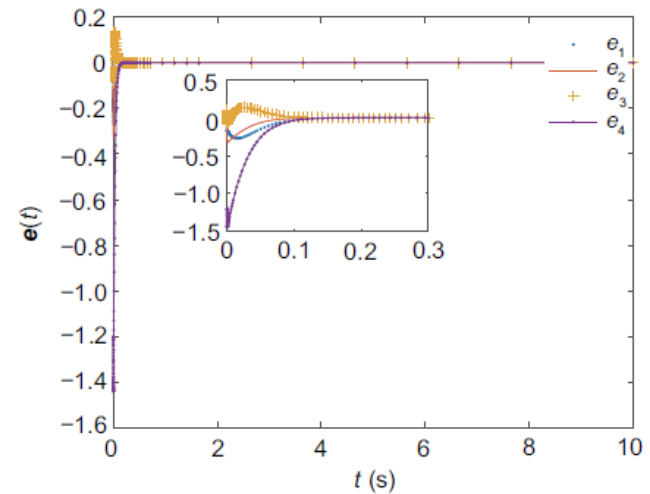


Fig. 2 Observer errors $e(t)$

Simulations (Cont'd)

Example 2

In this study, the direct current (DC) motor model is used as the example shown in Fig. 3. We can obtain Eq. (33).

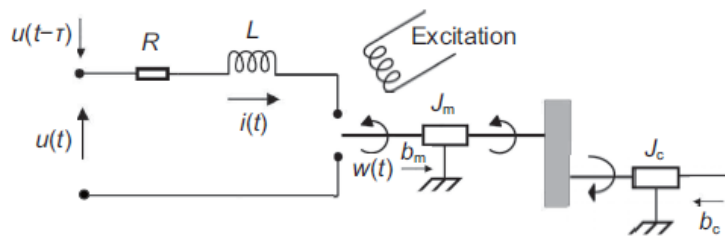


Fig. 3 Block diagram of the direct current (DC) motor

$$\left\{ \begin{array}{l} \begin{bmatrix} L & 0 & 0 \\ 0 & J & 0 \\ 0 & 0 & 0 \end{bmatrix} D^\alpha \begin{bmatrix} x_1(t) \\ x_2(t) \\ x_3(t) \end{bmatrix} = \begin{bmatrix} 0 & 0 & 1 \\ K_t & -b & 0 \\ R & -K_w & -1 \end{bmatrix} \begin{bmatrix} x_1(t) \\ x_2(t) \\ x_3(t) \end{bmatrix} + \begin{bmatrix} 0 \\ 0 \\ 1 \end{bmatrix} u(t) + \begin{bmatrix} 0 \\ 0 \\ 1 \end{bmatrix} u(t - \tau), \\ y(t) = [0 \quad 1 \quad 0] \begin{bmatrix} x_1(t) \\ x_2(t) \\ x_3(t) \end{bmatrix}. \end{array} \right.$$

(33)

Choose the parameter settings

Parameter	Value	Parameter	Value
L	2 mH	J_m	1 kg · cm ²
R	4 Ω	b_m	1.5
K_t	2.5 kg · cm ² /s ²	b_c	2
K_w	4 V/(rad·s)	n_0	2
J_c	8 kg · cm ²		

$$\left\{ \begin{array}{l} \begin{bmatrix} 2 & 0 & 0 \\ 0 & 3 & 0 \\ 0 & 0 & 0 \end{bmatrix} D^\alpha \begin{bmatrix} x_1(t) \\ x_2(t) \\ x_3(t) \end{bmatrix} = \begin{bmatrix} 0 & 0 & 1 \\ 2.5 & -2 & 0 \\ 4 & -4 & -1 \end{bmatrix} \begin{bmatrix} x_1(t) \\ x_2(t) \\ x_3(t) \end{bmatrix} + \begin{bmatrix} 0 \\ 0 \\ 1 \end{bmatrix} u(t) + \begin{bmatrix} 0 \\ 0 \\ 1 \end{bmatrix} u(t - \tau), \\ y(t) = [0 \quad 1 \quad 0] \begin{bmatrix} x_1(t) \\ x_2(t) \\ x_3(t) \end{bmatrix}. \end{array} \right.$$

(34)

Simulations (Cont'd)

Example 2

Table 5 Simulation results for K

α	τ	K		
0.21	0.37	[1.3729	2.2329	-0.8073]
	1.21	[1.0350	2.7757	-0.3342]
	2.35	[0.4279	3.0690	-0.2465]
0.64	0.37	[4.1368	-2.6281	0.4634]
	1.21	[2.5584	-1.3251	-0.1366]
	2.35	[2.0506	-0.8866	-0.3650]
0.98	0.37	[2.1249	-1.2776	0.6772]
	1.21	[2.1000	-1.2840	0.3802]
	2.35	[2.1017	-1.2961	0.2318]

Table 6 Simulation results for L

α	τ	L		
0.21	0.37	[12.7852	11.7590	5.2006] ^T
	1.21	[8.7194	12.7752	13.3779] ^T
	2.35	[5.0822	10.5641	16.8711] ^T
0.64	0.37	[-0.3521	-15.2569	-41.2119] ^T
	1.21	[-2.0668	-14.5905	-45.0673] ^T
	2.35	[-4.1104	-14.1993	-49.4751] ^T
0.98	0.37	[2.8932	-7.8294	-10.9265] ^T
	1.21	[2.1371	-8.2418	-14.6744] ^T
	2.35	[1.2399	-8.6320	-19.3545] ^T

Simulations (Cont'd)

Example 2

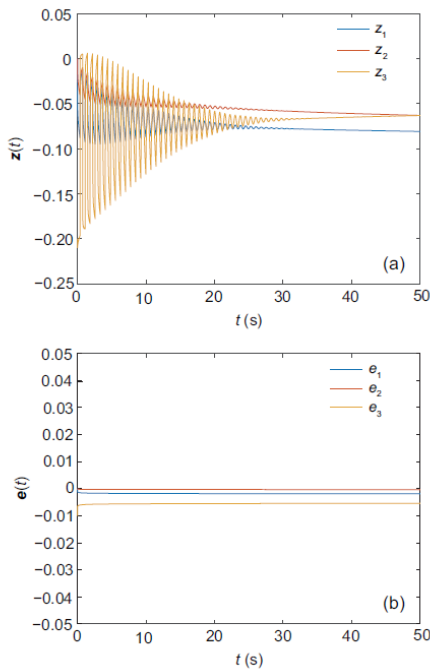


Fig. 4 States $z(t)$ (a) and errors $e(t)$ (b) with $\alpha = 0.21$ and $\tau = 0.37$

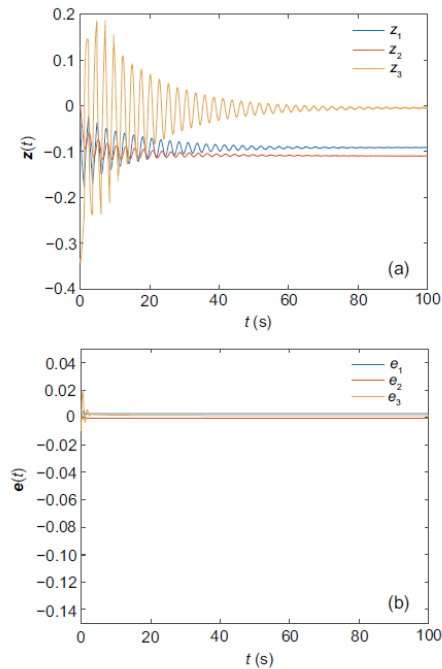


Fig. 5 States $z(t)$ (a) and errors $e(t)$ (b) with $\alpha = 0.64$ and $\tau = 1.21$

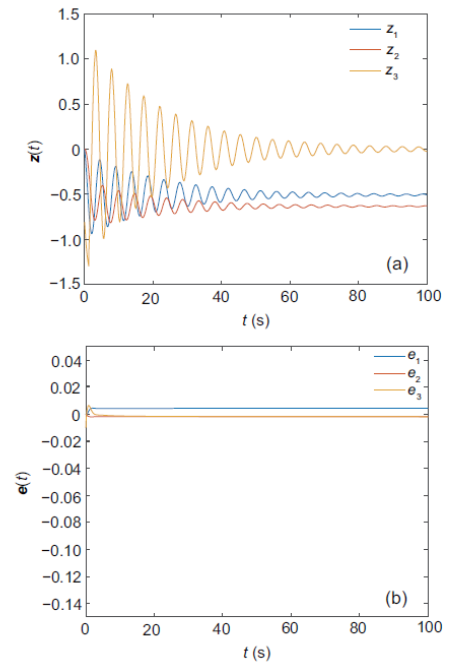


Fig. 6 States $z(t)$ (a) and errors $e(t)$ (b) with $\alpha = 0.98$ and $\tau = 2.35$

Conclusions

The paper deals with observer-based controller design for fractional-order singular systems with α ($0 < \alpha < 1$) and input delay. Using the linear matrix inequality (LMI) technique, the necessary and sufficient condition based on the nonstrict LMI is obtained. In the case of random error, the nonstrict LMI-based condition will cause trouble. When we improve the condition based on the strict LMI, the condition is easier to handle. Finally, the numerical example and the DC motor example are given to illustrate the effectiveness of the proposed condition.

In the future, observer-based robust control and observer-based H_∞ control for fractional-order singular systems will be studied.



Bingxin LI received the BS degree in automation from Shandong University, Jinan, China, in 2014, the MS degree in systems analysis and integration from Northeastern University, Shenyang, China, in 2017, and he is currently pursuing the PhD degree in control science and engineering from Nankai University. His research interests include fractional-order control systems, singular systems, and robust control.



Xiangfei ZHAO received the BS degree from Department of Wind Energy and Power Engineering, Hebei University of Technology, Tianjin, China, in 2013, the MS degree from the Automation College of Tianjin University of Technology, Tianjin, China, in 2017. He is currently working toward the PhD degree in Control Theory and Control Engineering with the Nankai University, Tianjin, China. His current research interests include micromanipulation and microsystems.



Xuefeng ZHANG received his BS degree in applied mathematics, the MS degree in control theory and control engineering, and the PhD degree in control theory and control engineering from Northeastern University, Shenyang, China, in 1989, 2004, and 2008, respectively, where he is currently with the College of Sciences. He has published more than 100 journal and conference papers and 3 books. He is the Associate Editor of *IEEE Access* and the Committee member of Technical Committee on Fractional and Control of Chinese Association of Automation. His research interests include fractional-order control systems and singular systems.



Xin ZHAO received the BS degree in control theory and control engineering from Nankai University, Tianjin, China, in 1991, the MS degree in control theory and control engineering from the Shenyang Institute of Automation, CAS, Shenyang, China, in 1994, and the PhD degree in control theory and control engineering from Nankai University in 1997. He is currently a Professor and the Dean of the College of Artificial Intelligence in Nankai University. His current research interests include micromanipulator, microsystems, and mathematical biology.