



XIRAC: an optimized product-oriented near-real-time operating system with unlimited tasks and an innovative programming paradigm based on the maximum entropy method[#]

Alireza ZIRAK

Photonics and Quantum Technologies Research School, Nuclear Science and Technology Research Institute, Tehran 111553486, Iran

E-mail: zirak@um.ac.ir

Received Feb. 12, 2024; Revision accepted Aug. 5, 2024; Crosschecked Mar. 10, 2025

Abstract: In the fiercely competitive landscape of product-oriented operating systems, including the Internet of Things (IoT), efficiently managing a substantial stream of real-time tasks coexisting with resource-intensive user applications embedded in constrained hardware presents a significant challenge. Bridging the gap between embedded and general-purpose operating systems, we introduce XIRAC, an optimized operating system shaped by information-theory principles. XIRAC leverages Shannon's information theory to regulate processor workloads, minimize context switches, and preempt processes by maximizing system entropy tolerance. Unlike prior approaches that apply information theory to task priority alignment, the proposed method integrates maximum entropy into the core of the real-time operating system (RTOS) and scheduling algorithms. Subsequently, we optimize numerous system parameters by shifting and integrating commonly used unlimited tasks from the application layer to the kernel. We describe the advantages of this architectural shift, including improved system performance, scalability, and adaptability. A new application-programming paradigm, termed "object-emulated programming," has emerged from this integration. Practical implementations of XIRAC in diverse products have revealed additional benefits, including reduced learning curves, elimination of library functions and threading dependencies, optimized chip capabilities, and increased competitiveness in product development. We provide a comprehensive explanation of these benefits and explore their impact through real-world use cases and practical applications.

Key words: Task scheduling; Information theory; Embedded real-time operating system (RTOS); Maximum entropy; Load balancing
<https://doi.org/10.1631/FITEE.2400102>

CLC number: TP316.2

1 Introduction

Real-time operating systems (RTOSs) have long faced stringent constraints, aiming to execute unpredictable tasks within deadlines while ensuring seamless interaction with limited hardware resources (Wang, 2017; Zirak, 2023). These challenges are deeply rooted in the conventional architecture of operating systems and schedulers, which necessitate application software development

to evolve gradually and unpredictably, often relying on constrained tools such as functions and threads. Consequently, in any processor and its associated operating system, there is a trade-off among speed, resource efficiency, and ease of application programming.

The challenges in real-time computing have led to a clear divide in computer systems, classifying into two distinct categories: general-purpose computers and embedded systems (Wang, 2017). However, the rapid progress of embedded systems and their associated platforms, particularly in intense product-oriented competition, has blurred this distinction. In many cases, the terms "general-purpose computer" and "embedded system" have become ambiguous.

[#] Electronic supplementary materials: The online version of this article (<https://doi.org/10.1631/FITEE.2400102>) contains supplementary materials, which are available to authorized users

ORCID: Alireza ZIRAK, <https://orcid.org/0000-0002-0346-7998>

© Zhejiang University Press 2025

Such competition raises a critical question: what lies ahead in the realm of technology? The answer hinges on the trajectory of computer hardware development, as Moore's law approaches its limits with the advent of 4 nm technology. While new computing paradigms, such as quantum computing, are evolving rapidly, they are not intended to replace classical computers. Instead, even as the need for augmenting classical computer capabilities remains acute, particularly in the realm of embedded systems, the outlook for scaling and speeding up their hardware resources is not promising (Min-Allah et al., 2012; Fang et al., 2020; Zirak, 2023). Given these constraints, optimizing scheduling in future robust operating systems (ranging from classical embedded systems to emerging quantum supercomputers) is crucial. In our previous work (Zirak, 2023), we introduced XIRAC-Q, a quantum operating system for ion trap-based quantum supercomputers, emulated on field programmable gate array (FPGA) platform. This system leverages information theory to optimize task scheduling and enhance performance. In the realm of classical computing, the proposed structure has exhibited exceptional robustness, enabling the rapid development of numerous products and projects, such as smart home, spectrometers, and educational and practical platforms. By applying maximum entropy principles, we successfully migrated extensive application-level tasks to the kernel, making it highly effective in small-to medium-scale processors.

Despite extensive research on scheduling algorithms, ensuring an operating system's adaptability to task disarray remains a persistent challenge, particularly from a central processing unit (CPU) perspective. Effective optimization requires not only parameter tuning but also deeper coordination between the scheduler and hardware. In this approach, traditional multi-threading models and system-level function calls are replaced with an event-driven and polling-based mechanism that continuously scans and executes numerous tasks without interruption or latency.

Unlike traditional operating systems that rely on compilers and programmers during compile time, this study presents a resilient operating system, by introducing a groundbreaking method to enhance the scheduling of an infinite number of tasks and messages.

2 Motivation

In light of the challenges, a fundamental question arises: "How can we enhance the scheduling of numerous near-real-time tasks within a resource-constrained system while implementing a robust operating system?" This question bridges two critical processing technologies: embedded product-oriented operating systems and cloud-based quantum supercomputer operating systems.

2.1 Robust task scheduling and constraints

In the context of minimal systems, various commercial platforms have emerged to streamline micro-electronic system design, particularly when hardware resources are scarce. Platforms like Arduino, Raspberry Pi, and ST's HAL-based peripheral drivers offer compelling features and have garnered substantial user bases (Kondaveeti et al., 2021). Nevertheless, these platforms often provide users with a collection of disparate, loosely correlated library functions tailored to specific hardware components. As a result, achieving the key attribute of cost-effective and competitive products—real-time seamless integration of extensive capabilities—remains elusive. Typically, these types of solutions find applications mainly in laboratory and educational settings. However, in product-oriented scenarios, expanding the size of user applications, particularly in terms of the number of non-critical tasks, becomes imperative and inevitable. Yet, this expansion introduces the challenge of resource contention among tasks, potentially leading to data vulnerabilities, application crashes, or substantial periodic jitter.

From a scheduling viewpoint, modern real-time systems prioritize aspects like meeting critical task deadlines over fewer essential ones. This preference leads to the adoption of fixed priority scheduling mechanisms such as rate monotonic (RM) due to their simplicity and adaptability, particularly during periods of heavy system load or when managing static tasks. In contrast, dynamic scheduling algorithms like earliest deadline first (EDF) come into play under lighter system loads, although they may introduce computational overhead owing to the frequent ready queue sorting and exhibit instability (Wang, 2017).

In these cases, task periods and deadlines are typically established during the design phase and remain

constant throughout the system's operation. However, the task execution time varies considerably. The upper bound of the task execution time, i.e., worst case execution time (WCET), plays a pivotal role in scheduling algorithm calculations (Min-Allah et al., 2012; Fang et al., 2020). The main difficulty is that many scheduling-related computations, such as the utilization factor, rely on an over/underestimated parameter due to the influence of unpredictable environmental conditions on the task execution time. Therefore, relying on parameters that have the nature of random variables, rather than deterministic values, introduces substantial estimation errors, particularly as the task accumulation increases.

2.2 Exploring the foundations of novel approaches

In the domain of "load balancing," a considerable portion of research papers mainly use techniques that rely heavily on measurements of CPU utilization, which are closely associated with the WCET (Fang et al., 2020; Avan et al., 2023). However, depending solely on the WCET poses notable challenges, such as overestimation or underestimation due to a strong dependence on random environmental conditions and limitless requests with a lack of quantitative parameters. Therefore, the primary goal is to maximize the number of active or ready near-real-time tasks while optimizing CPU usage. Meanwhile, minimizing the reliance on the WCET is crucial for efficient CPU utilization in product-oriented competitive projects. To achieve this, we propose migrating many non-critical and common application-level tasks to the kernel.

These constraints necessitate a new paradigm applicable to all computer systems, specifically a third category named the "robust architectural core." This nomenclature reflects the imperative need for a robust kernel that efficiently correlates the unpredictable and high demands of clients with the constrained hardware and bandwidth resources, converging into a unified architectural core during runtime. The "robust architectural core" is different from general-purpose computers and embedded systems, and such a cohesive approach surpasses conventional methodologies, which involve configuring different components of the kernel and application software through independent and randomly accessed library functions or application programming interfaces (APIs).

Incorporating measurable data such as the variance and the mean of events or requests and the fundamental principle of maximum entropy, we construct a distribution that minimizes assumptions while showcasing the most unforeseen behavior in relation to our scheduling parameters.

We have developed and refined an embedded system platform and operating system over 15 years, leveraging Shannon's information-theory principles, a priori information, and the Nyquist–Shannon sampling theorem. We have developed an operating system structure called XIRAC (extreme informative robust architectural core), which effectively integrates common near-real-time features into the kernel while minimizing CPU utilization. Note that we previously emulated a similar structure in a quantum computer (XIRAC-Q), leading to the current implementation in the classical counterpart (Zirak, 2023). This perspective reduces the learning curve for designers, developers, and educational initiatives, while offering greater flexibility and performance for the final product. However, in the proposed method, programming at the operating system level will be more difficult, while application programming at the user level will be much simpler than the conventional approach. The framework introduces a novel paradigm in application programming, which we have termed "object-emulated programming." This method simulates object-oriented structures at a deeper system level, fostering innovation and efficiency in software development.

To highlight the effectiveness of the scheduling methodology, we incorporate findings derived from extensive data collected over several years across numerous products crafted through this operating system. These results are compared with similar products to provide a comprehensive performance analysis in low CPU utilization scenarios.

3 Background information

3.1 Relevant prior research

In addressing the challenges posed by common scheduling constraints, such as the WCET and dead time, many practical applications based on minimal systems encounter limitations when using RTOSs or even minimum abstraction layers. Consequently,

designers often resort to bare-metal programming, found in platforms like Arduino. However, these platforms face a challenge rooted in their limited expandability, restricting their utility to mainly amateur and laboratory applications.

Previous studies have attempted to use criteria other than the WCET for task scheduling, with some exploring variables rooted in information theory, notably entropy (Sharma and Nitin, 2013; He et al., 2015; Rincón and Cheng, 2017, 2018; Li et al. 2018; Abohamama et al., 2022; Avan et al., 2023). However, the advances in scheduling algorithms resulting from such efforts have been marginal. For instance, innovative solutions using entropy for dynamic task priority scheduling were presented, prioritizing tasks with the highest information content per studied interval (Rincón and Cheng, 2017, 2018; Avan et al., 2023). Yet, in all these endeavors, the entropy component exhibits a sole dependency and remains proportional to the utility factor.

Rincón and Cheng (2017) introduced the information-theory-based scheduling solution for real-time system (ITS-RT) method for comparing task information, yet the information components of priority criteria, i.e., H_{sys} and d_p , are uniform for all tasks. Consequently, the entropy in these methods lacks a discernible effect on priority comparison, and the criteria employed for parameter selection align closely with those of prevalent methods for calculating utility factors or probabilistic occurrences.

Li et al. (2018) proposed a hardware-oriented task partitioning and scheduling algorithm that considers race conditions, using an entropy maximization method. While their approach considered uncertainty as a probabilistic occurrence, leading to an uncertainty matrix analysis, its high computational complexity and strong external condition dependency hindered its broader applicability. Similarly, He et al. (2015) introduced an uncertainty model for race conditions but did not develop task scheduling algorithms. These proposed solutions were claimed to enhance system (CPU) performance. However, from an information-theory perspective, they mainly reduced embedded information within the time division (source entropy) without addressing the system's capacity (channel entropy). In the realm of optimization, there has been a notable emphasis on scheduling for safety-critical systems in recent years (Gaikwad, 2024).

However, this attention predominantly centers around critical systems; the core focus of this paper lies in non-critical systems, which form the basis of our exploration.

In our previous study (Zirak, 2023), we employed a maximum entropy approach to theoretically optimize quantum tasks, focusing on ion-trap-based quantum computers. However, this work was primarily theoretical and did not involve a classical operational system with real-world output data. Addressing optimization challenges can lead to interesting results, particularly in product-oriented systems, such as robust operating systems managing infinite tasks within the proposed object-emulated paradigm. Our proposed approach has proven critical for optimized resource allocation and enhanced system flexibility, reflecting an even distribution of potential states. Such adaptability supports robust performance in product-oriented embedded systems, especially within competitive applications that involve complex and real-time tasks.

3.2 Fundamental concepts

Shannon (1948) introduced the concept of information entropy to quantify the uncertainty associated with the occurrence of a random variable. For a discrete random variable T , where T represents all active tasks set with potential values $\{t_1, t_2, \dots, t_n\}$ and probability mass function p_i , entropy $H(T)$ quantifies the distribution of tasks and the likelihood of each state, encapsulating both as a single metric. The entropy $H(T)$ can be defined as

$$H(T) = E[I(T)] = E[-\log_2(P(T))] = -\sum_{i=1}^n p_i \ln(p_i), \quad (1)$$

where $E(\cdot)$ is the expectation operator, and $I(T)$ signifies the information content of T , which is akin to the system tolerance (CPU capacity) for handling task events or requests. $p_i = P(T=t_i)$ represents the probability of each task state, with $H_n(p_1, p_2, \dots, p_n) = H(T)$ expressing the entropy in terms of the distribution probabilities.

Maximum entropy posits that when statistical constraints such as mean, standard deviation, or other momentums of random variables are available, the probability distribution representing the current state of knowledge with the highest information entropy is considered (Fampa and Lee, 2024; Khosravi et al.,

2024; Lisitsin and Gavrilov, 2024). Maximizing entropy implies the highest level of surprise and the fewest satisfied assumptions.

To determine maximum entropy distributions, the problem is typically formulated as maximizing the entropy function with multiple constraints such as mean and standard deviation. To integrate essential constraints within a single scheduling function, we employ a Lagrange multiplier approach (Khosravi et al., 2024), incorporating factors for workload and task priority. An expanded Lagrange multiplier function \mathcal{L} to maximize entropy $H(T)$ under specified constraints is expressed as

$$\begin{aligned} \mathcal{L}(p_1, p_2, \dots, p_n, \lambda_1, \lambda_2, \lambda_3) = & -\sum_{i=1}^n p_i \ln(p_i) + \lambda_1 \left(\sum_{i=1}^n p_i t_i - \mu \right) \\ & + \lambda_2 \left(\sum_{i=1}^n p_i r_i - R \right) + \lambda_3 \left(\sum_{i=1}^n p_i - 1 \right), \end{aligned} \quad (2)$$

where λ_1 and λ_2 are the Lagrange multipliers tied to the statistical constraints μ (e.g., average task request rate) and the resource limit R (e.g., processing capacity and memory), respectively. λ_3 ensures the normalization constraint, meaning that the sum of all probabilities equals one. t_i and r_i denote the computational load and resource requirements per task, respectively. By setting all partial derivatives of \mathcal{L} to zero, we derive a system of equations to p_i values that maximize entropy under the constraints. These constraints could reflect the computational limits of a microcontroller (e.g., CPU cycles and available memory) or statistical properties (e.g., the mean and variance of task requests), allowing for optimization within the device's physical capabilities and workload characteristics.

As a straightforward example, consider a general product-oriented operating system within a standard processor environment where only μ is known, while variance and specific resource requirements remain undetermined. The corresponding distribution that maximizes entropy is given by

$$\Pr(T=t_i) = S \times r^i, \quad i=1, 2, \dots, m, \quad (3)$$

where the constants r and S are positive and the expected value of a random variable must be μ . The constants are determined by the conditions that the

probabilities sum to one. In this case, if each task request or job is treated as a random variable indexed by its repetition rate (e.g., $t_i=i$, where i is the index of each task), then

$$S = \frac{1}{\mu-1}, \quad r = \frac{\mu-1}{\mu}. \quad (4)$$

Several key characterizations and expressions (Scharfenaker and Yang, 2020; Schäffler, 2024) are formulated, drawing upon foundational functions and derivations rooted in entropy principles (see Section 1 in the supplementary materials for details). The proposed methods and underlying theories are also derived from these principles, providing a basis for critical derivations and implications. Here, we first outline the inferred theorems and their key corollaries:

Theorem 1 The future will be led by product-oriented embedded or quantum operating systems with an unprecedented number of tasks.

Theorem 2 The succeeding generation of embedded systems and quantum supercomputers necessitates the effective management of an extensive array of diverse requests in near real time, facilitated by a robust and optimized operating system.

Justification 1 Increased diversity in user needs and heightened competition among manufacturers have raised public expectations for embedded systems.

Corollary 1 In a resilient and robust operating system, the number of tasks should approach infinity in a near-real-time fashion, underscoring the need for scheduling optimization.

Corollary 2 To achieve optimal scheduling in a high-efficiency operating system, it is essential to migrate the majority of tasks, particularly frequently requested and common ones, from the application layer to the operating system's kernel. By integrating and scheduling these tasks directly within the kernel, overall entropy can be maximized, effectively distributing system states and reducing reliance on numerous nested and unoptimized user-level threads. Let T_{app} and T_{ker} be random variables, representing tasks in the application layer and the kernel, respectively. By defining task transfer as $T_{\text{app}} \rightarrow T_{\text{ker}}$, the kernel scheduling function that maximizes entropy over the task space can be represented as

$$\max_{\text{kernel}} \left\{ H(T_{\text{app}} \rightarrow T_{\text{ker}}) \right\}. \quad (5)$$

4 XIRAC architecture

4.1 Fundamental structure of the scheduler

From a CPU's point of view, whether instructions are simple no operations (NOPs) or intricate and efficient algorithms, the impact on factors like power consumption or performance remains indifferent. When examined through the perspective of information theory, both scenarios reveal a shift in system entropy where the information state changes from a minimum to a maximum value. Simply put, maximizing system entropy tolerance indicates a greater capacity to accommodate disordered tasks and messages, ultimately improving project manageability.

The entropy of a RTOS can be quantified by analyzing the entropy of task sets distributed across the kernel and application layers. Let t_i represent the i^{th} periodic task and t_{ij} denote the j^{th} instance (job) of t_i . Define the random variable T to encompass all jobs of all tasks. Each task t_i is characterized by a probability p_i , execution time τ_i , and resource demand r_i . The goal is to maximize the system's entropy $H(T)$ to achieve an optimal task distribution in the kernel, thereby minimizing timing overhead while enhancing scheduling efficiency in the following distinct scenarios:

1. Unconstrained job scheduling: for a robust and adaptive scheduling system, assume all jobs are independent and equally likely, reflecting a scenario with no predefined priorities or parameters. Shannon's information theory implies that maximum entropy is achieved under equiprobable distribution:

$$\arg \max_{p(T=t_i)} H(T) = \frac{1}{N}, \quad \forall i, j, \quad (6)$$

where N is the total number of jobs in a hyper-period.

2. Semi-constrained task scheduling: unlike individual job scheduling, tasks often possess unique statistical parameters as they may vary in frequency, execution time, or resource demands. By incorporating such parameters, a more realistic scheduling model can be developed. Define a task set $T = \{t_1, t_2, \dots, t_m\}$ arranged by frequency, and let $C = \{c_1, c_2, \dots, c_K\}$ denote task requests or calls, mapped to expected periods $P = \{p_1, p_2, \dots, p_K\}$ by

$$f: C \rightarrow P. \quad (7)$$

The expectation $E(P) = \mu$ represents the mean task period. For example, if $\mu = 2$, the corresponding maximum entropy distribution is

$$\Pr(T=t_i) = u_i = \left(\frac{1}{2}\right)^i, \quad i=1, 2, \dots, m. \quad (8)$$

The utilization factor of task i , represented by u_i , signifies the likelihood that it is currently running. This binomial distribution reflects task occurrence probabilities proportional to their repetition rates.

3. Application-to-kernel task integration: when additional statistical constraints such as variance or higher-order moments are considered, the task distribution adapts to these parameters. Depending on the application, the resulting distributions might include Poisson, normal, or other forms. For instance, a Poisson distribution is appropriate for scenarios where tasks are not equally probable, resulting in tasks with unequal durations. However, when the number of tasks tends to infinity, the Poisson distribution approaches a normal distribution, characterized by its mean and variance.

Migrating unlimited tasks from the application layer to the kernel enhances system entropy by facilitating more efficient scheduling at the kernel level. The stochastic parameters influencing this integration include resource demands, task requests, and execution times. In complex and dynamically changing scenarios, traditional analytical methods may be insufficient. Instead, numerical optimization techniques, such as Lagrange multipliers, as shown in Eq. (2), can be employed to determine the optimal probability distribution of kernel tasks. In Eq. (2), differentiating \mathcal{L} with respect to p_i and setting the derivatives to zero maximize the entropy $H(T_{\text{ker}})$ under the given constraints. The derived probability distribution for optimal task scheduling is (see Section 1.8 in the supplementary materials for proof)

$$p_i = \frac{\exp(\lambda_1 \tau_i + \lambda_2 r_i)}{\sum_{j=1}^n \exp(\lambda_1 \tau_j + \lambda_2 r_j)}, \quad (9)$$

where λ_1 and λ_2 are the Lagrange multipliers associated with timing and resource constraints, respectively. These multipliers can be computed by solving the system of equations derived from the constraints.

By integrating tasks directly into the kernel, these parameters can be statically defined by the operating system programmer. While this approach is more complex than typical application programming, it significantly improves the efficiency and performance of the operating system. Kernel programming focuses on defining nested tasks and sub-tasks with irregular but highly optimized structures for effective scheduling, whereas application programming prioritizes user simplicity, often sacrificing system-wide efficiency.

Introducing threads in user applications primarily simplifies application programming for non-expert users. However, it is crucial to distinguish between application-level and operating system-level programming. While operating system programming should prioritize optimal scheduling, even at the expense of complexity, this increased complexity can paradoxically lead to greater simplicity at the application level. By offloading complex scheduling decisions to the kernel, we can enable the development of new programming paradigms, such as object-emulated programming. This paradigm offers a more intuitive and streamlined approach to application development, potentially revolutionizing the way we write software.

Previous work (Zirak, 2023) optimized the runtime scheduling of quantum tasks for user applications on a classical computer. This study shifts the focus to optimizing the scheduling of operating system tasks at compile time, ensuring static efficiency for system-critical operations. By implementing kernel-level scheduling optimized using Eq. (9), operating systems can achieve significant performance gains in real-time and resource-constrained environments.

4. Minimum informative jobs execution time (MIJET): in this scenario, the goal is to minimize the WCET of all task instances (jobs) while ensuring the system maintains a “minimum informative” state. This is achieved by increasing the number of jobs to a threshold that maximizes the system’s entropy. We refer to this parameter as the MIJET, which is mathematically defined as

$$\arg \max_N H_N(T) = A, \quad (10)$$

where $H_N(T)$ denotes the entropy of N jobs within one hyper-period, while A represents the maximum number of jobs satisfying the MIJET condition. Notably, the

equation $H_A(T) \geq H_{A+1}(T)$ signifies that the entropy of the system will not increase further by adding more tasks beyond A . This result stems from the properties of entropy: it is a concave and monotonically increasing function with respect to the number of equiprobable events. As a result, there always exists a maximum entropy value for a finite number of jobs within a hyper-period. Thus, A serves as the optimal point where the trade-off between task execution time and system entropy is balanced.

Let us explore the concept of the MIJET. It refers to the minimum period of all jobs (task instances) where additional information cannot be introduced to the system. In other words, below this threshold, there is no new information being added to the system. Its bounds depend on applications; for example, for an embedded system, its limit is proportional to the inverse of the maximum input/output signal/event bandwidth.

4.2 MIJET calculation: a methodology for task scheduling

The calculation of MIJET serves as a crucial step in establishing the lower limit for task duration and should be initiated at the beginning of the task scheduling process. To illustrate the application of MIJET in the proposed scheduling method, the Nyquist-Shannon sampling theorem is introduced: “If we sample an analog signal uniformly at a rate that is greater than or equal to twice the signal’s bandwidth, it becomes possible to perfectly recover the original analog signal from the discrete values” (Najmi and Moon, 2020). The Nyquist–Shannon equation is given by

$$f_s = 2B, \quad (11)$$

where B represents the signal bandwidth and f_s is the sampling frequency. Beyond this sampling frequency, the likelihood of acquiring additional information from the environment is negligible.

In the context of modern industrial embedded systems where analog signals are generated from pulse width modulation (PWM) signals, a correlation exists between the PWM signal frequency (f_{PWM}) and f_s :

$$u_i, f_{\text{PWM}} = \alpha f_s = 2\alpha B, \quad (12)$$

where u_{t_1} represents the utilization factor of t_1 , associated with the highest frequency data sampling or signal generation, for computing the next PWM duty cycle. The constant α acts as a proportionality factor, enabling the construction of an analog filter with the fewest devices necessary to produce an acceptable output from a PWM signal. This is especially pertinent for tasks like generating three-phase inverter waveforms or controlling stereo audio signals. Experimentally it is sufficient to consider $\alpha=1.5$ for many ordinary products (Zirak and Roshani, 2016).

To ensure a CPU generates a high-resolution PWM waveform with minimal jitter, it is essential to configure control registers to activate the option named the phase–frequency correct procedure (Ünsalan et al., 2022; Microchip Technology, 2023). With this operational procedure, during each PWM cycle, the timer is required to count from 0 to the top value, such as 255, then decrement back to 0. The PWM frequency in phase–frequency correct mode ($f_{PC, PWM}$) is

$$f_{PC, PWM} = \frac{f_{clk}}{2P \times TOP} = \frac{2\alpha B}{u_{t_1}}, \quad (13)$$

where P denotes the prescaler (e.g., =1), f_{clk} is the clock frequency of the CPU, and TOP is the top value of the corresponding CPU timer/counter. The maximum entropy of the PWM ramp signal, assuming it is assigned M bits, can be expressed as

$$TOP = 2^M - 1. \quad (14)$$

To exemplify how this concept is used in the scheduling algorithm, consider various professional products implemented using this proposed platform and operating system (Kiyani et al., 2011; Khezerloo et al., 2017; Zirak et al., 2017; Zirak, 2023), and see reference examples at www.xirac.com, www.asansor110.com, and www.radaran.com. These products range from integrated elevator modules to power inverters, mass spectrometry systems, and smart homes, showcasing the versatility and robustness of the platform across diverse applications. Almost all products implemented with this operating system have a massive volume of application software and dozens of synchronized modules communicating with each other.

As Eq. (13), consider a tiny 8-bit CPU with a clock frequency of $f_{clk}=32$ MHz (or a thread with

such a frequency which is generated inside another operating system) and PWM 8-bit registers ($TOP=2^8-1=255$) in phase correct mode with $P=1$. This leads to a PWM frequency of

$$f_{PC, PWM} = \frac{2\alpha B}{u_{t_1}} = \frac{32 \text{ MHz}}{2 \times 1 \times 255} = \frac{32 \text{ MHz}}{510} \approx 62.745 \text{ kHz}, \quad (15)$$

suitable for generating audio signals or driving switching mode power supplies or inverter carriers. With $\alpha=1.5$ and $u_{t_1}=\frac{1}{2}$, B is about 10.46 kHz, providing ample capacity for various applications, such as generating audio signal, switching mode power supply, or inverter carriers. With $u_{t_1}=\frac{1}{2}$, half of the time slots, i.e., task instances, are allocated to the periodic task with the highest frequency. Consequently, maximum entropy and typically high-rate services (such as the task request for real-time pulse shaping, signal processing, and generally PWM duty cycle setting) are associated with t_1 . Conversely, the remaining half of the time slots are allocated to servicing the lower-frequency components, which inherently have lower entropy.

Viewing the MIJET as the basis of the PWM period, the quantity of instructions or CPU clock pulses carried out during one task period (I_{task}) can be expressed as

$$I_{task} = \frac{f_{clk}}{f_{PC, ramp}} = 2P \times TOP, \quad (16)$$

where $f_{PC, ramp}$ is the frequency of the PWM ramp signal in phase–frequency correct mode.

About 510 ($2 \times 1 \times 255$) assembly instructions can be executed during each task period. However, due to the absence of dead time, there is no limit to the number of instructions per task period. Moreover, the MIJET corresponds to 510 CPU clock pulses.

From the B value, it can be concluded that if we consider the MIJET to be a 510-CPU-clock pulse (the denominator of the fraction of Eq. (15)), all types of analog audio signals and inverter waveforms up to 10.46 kHz bandwidth can be made with this PWM frequency with good accuracy. On the other hand, the MIJET is about 510 CPU assembly instructions if reduced instruction set computer (RISC) technology is used:

$$\begin{aligned} \text{MIJET} = \text{WCET} = 510\text{-CPU-clock pulse} &= \frac{510}{32 \times 10^6} \text{ s} \\ &\approx 16 \mu\text{s}. \end{aligned} \quad (17)$$

4.3 Implementation of the task scheduler

In a specific example illustrating the use of hardware constraints to determine task repetition rates via maximum entropy and Lagrange multipliers, consider a processor with a 32-MHz clock speed and 8 kb of random access memory (RAM). We examine three tasks: task A with $\tau_A=1500$ clock cycles and $r_A=256$ bytes, task B with $\tau_B=2000$ clock cycles and $r_B=128$ bytes, and task C with $\tau_C=1200$ clock cycles and $r_C=64$ bytes. The total constraints are a hyper-period duration $\mu=5000$ clock cycles and RAM usage $R=384$ bytes.

By combining these constraints with the entropy function $H(T)$ using the Lagrange multiplier method (Eq. (2)), and solving for p_i by setting partial derivatives to zero, we determine the task probabilities assuming $\lambda_1=0.001$ and $\lambda_2=0.01$: $p_A \approx 0.4$, $p_B \approx 0.3$, and $p_C \approx 0.3$.

This configuration ensures maximum entropy scheduling, optimizing task execution while respecting hardware limitations. By integrating these tasks directly into the kernel, the system achieves improved efficiency with minimal timing overhead and high resource utilization.

As a preliminary statement of the practical work conducted in alignment with the presented scenario, where limited prior statistical data such as mean values are available, Eq. (8) yields the utilization factor for task i as $u_i = \left(\frac{1}{2}\right)^i$ where $1 \leq i < \infty$. With these assumptions, the overall CPU utilization is given by $U = \sum_{i=1}^n u_i = \sum_{i=1}^n \left(\frac{1}{2}\right)^i \leq 1$. As the quantity of tasks (n) approaches infinity, the utilization converges towards unity. Consequently, the overall system becomes schedulable by maximum entropy, provided that the Nyquist–Shannon sampling theorem or event rate sampling is adequately met, especially for higher repetition rate tasks. This sets the stage for the establishment of the task scheduling condition outlined in Corollary 1. In this context, Eq. (1) underscores that maximum entropy aligns with the tasks or events with the highest periodicity that are most probable. In the exemplified scenario, maximum entropy aligns with t_1 , where $u_{t_1} =$

$\frac{1}{2}$. For tasks with lower repetition rates, the probability of occurrence diminishes, reducing their impact on the total entropy.

For constrained task scheduling, Eq. (7) demonstrates that entropy maximization is achieved through sequentially solving an optimization problem to determine the probability density of tasks and estimating stochastic request parameters to calculate the MIJET criteria. Moreover, maximizing system entropy and utilization requires integrating tasks from the application layer into the kernel, which entails a systematic organization of processes. This is achieved by mapping all processes and their corresponding driver architectures into appropriate kernel-level tasks, ensuring precision in alignment with the phase and frequency of their triggering events. Despite the numerous advantages, such as the ability to handle a multitude of processes and drivers concurrently within a modest 8-bit processor operating at 16 MHz or within another operating system, minimal context switches occur, using only a single timer (or thread) and freeing up the remaining hardware resources for user applications or the primary operating system.

In the versatile version of our proposed operating system, t_1 , which operates at a repetition rate of about $\frac{f_{\text{PC, PWM}}}{2} \approx 31\,372$ Hz, is designated for processes with the highest repetition rate. These tasks typically include audio playing/recording/processing, inverter waveform generation/sampling, fast analog-to-digital converters (ADCs), multiplexing, data flash memory operations, and module interfacing.

Meanwhile, t_2 , operating at $\frac{f_{\text{PC, PWM}}}{4} \approx 15\,687$ Hz, is dedicated to processes like serial protocols for data transceiver (e.g., CANBUS, Zigbee, Modbus, and ISP with 38400 baud), dual-tone multi-frequency (DTMF) passwords learning/decoding, graphical organic light-emitting diode (OLED)/liquid crystal display (LCD), and remote control (ICP DAS USA Inc., 2024). Moreover, t_3 , with a repetition rate of about $\frac{f_{\text{PC, PWM}}}{8} \approx 7843$ Hz, handles processes such as WiFi/GPRS/GSM/GPS module control, operations for boot loaders, and automatic gain control (AGC). Similarly, other tasks are allocated to other processes based on their repetition rates.

Using a simple overflow counter, t_4 (repetition rate of $\frac{f_{PC,PWM}}{16} \approx 3921$ Hz) is divided between three 1-kHz (period=1 ms for each) tasks with slight jitter and different phases. Every 1-kHz task encompasses processes associated with low-speed input/output (I/O) ports that involve analog/digital multiplexing features, scanning multiplexed displays, handling matrix I/O and keyboards, managing millisecond range operations, as well as identifying and controlling various standard peripherals. The hierarchical task structure allows the initiation of 10 100-Hz tasks, cascading into 10 more 10-Hz tasks and finally generating 10 1-Hz tasks. For example, each 100-Hz task may encompass processes such as zone control, menu navigation, tele-control, and interface management, or it may trigger 10 additional 10-Hz tasks. Similarly, 10 1-Hz tasks are generated in a similar manner.

Eq. (1) shows that lower repetition rates result in decreased probabilities of occurrence within a hyper-period, thereby reducing the overall entropy. Conversely, tasks with higher repetition rates contribute more to the system's entropy. Therefore, these tasks need meticulous adjustment with a higher volume of information.

Considering the MIJET value specified in Eq. (17), it becomes apparent that the nominal duration of every task amounts to 510 CPU clock pulses. An important inference from Shannon's information theory is that the entropy of the aggregate of multiple random variables is less than the sum of their individual entropies (Zirak, 2023). Consequently, merging several analogous algorithms (several sub-tasks) as a larger task instead of redundant analogous tasks can be more efficient provided the length of the resultant task falls within the nominal task length range of 510 CPU clock pulses. Each task is conceptualized as a directed acyclic graph (DAG) consisting of a sequence of hierarchical sub-tasks (Gaikwad, 2024).

The advantage of fixed priority scheduling methods, such as RM scheduling, is exemplified by their effective performance in overloaded states. In this method, less critical tasks miss deadlines instead of critical tasks, ensuring optimal operation. The proposed RTOS architecture leverages the advantages of RM even more effectively by implicitly aligning task importance with entropy, which is continuously expressed through the number of task repetitions. Unlike RM,

the proposed method does not necessitate interruption of one task or sub-task by another, contributing to minimized interference, disturbance, and context switches. Given the non-critical nature of periodic tasks and the need to maximize entropy, the assumption that each task has an infinite deadline is practical. This is because if the execution time exceeds the deadline, the subsequent task experiences a delay in execution.

With a system carrying capacity of about $\frac{1}{\text{MIJET}} = \frac{32 \times 10^6}{510} = 62\,745$ task instances per hyper-period (e.g., one second), the probability ($\text{Task}_{i,k}$) is $\frac{1}{62\,745}$, where $\text{Task}_{i,k}$ is the k^{th} instance of the i^{th} task. Using these calculated probabilities, the entropy value of $\text{Task}_{i,k}$ is

$$\begin{aligned} \text{Entropy}(\text{Task}_{i,k}) &= P(\text{Task}_{i,k}) \log_2 \left(\frac{1}{P(\text{Task}_{i,k})} \right) \\ &= \frac{1}{62\,745} \log_2 62\,745 = 2.5400 \text{ bits.} \end{aligned} \quad (18)$$

Therefore, the maximum entropy upper bound of the CPU within one hyper-period (hper) is

$$\begin{aligned} \text{Entropy}(\text{CPU}) &= \sum_{i,k \in \text{hper}} \text{Entropy}(\text{Task}_{i,k}) \\ &= \sum_{i=1}^{62\,745} \text{Entropy}(\text{Task}_{i,k}) = 15.9372 \text{ bits.} \end{aligned} \quad (19)$$

In this manner, a maximum entropy or maximum capacity limit, varying across different CPUs, is established in binary digits. In terms of load balancing, minimizing the entropy of overall tasks and maximizing the system's entropy outperform scheduling based on the utilization factor. The suggested operating system scheduler extracts statistical traits from each task, aiming to minimize the entropy of whole tasks via task migration tactics.

Although we do not delve into this aspect here, the potential for further investigation into this topic is acknowledged.

4.4 Messaging system

In the design cycle of a robust product-oriented operating system, including the Internet of Things

(IoT), it is essential to consider that tasks of any application are distributed across several modules, making application scheduling a critical issue. Deployments, characteristics, and timing constraints of applications vary significantly. For example, a data acquisition application may take only 16 μ s to convert and record an analog signal to flash, while time-consuming applications, involving completion request/response and related processing between the main module and GPRS, inverter, or heating, ventilation, and air conditioning (HVAC) modules, may take several seconds or minutes.

Driven by these difficulties, with the aim of augmenting the entropy of the entire system, we introduce an innovative messaging system to schedule and synchronize tasks across applications. Every task within an application, executing on a particular module, is initiated by one or multiple messages originating from tasks running on a different module. This inter-modular message transaction occurs through various protocols via a common bus. Applications can be abstracted as DAGs, where the nodes correspond to messages or tasks and the edges define the precedence constraints among the messages or tasks. The primary distinction is that tasks are defined by their execution time on a CPU, whereas messages are determined by their transmission time over the bus.

Building on the previously mentioned XIRAC method, which maximizes entropy for optimal scheduling of non-critical tasks in each module, the method is extended to schedule messages sent through a common bus or communication channel. An approach to achieve this goal is to use a single module, typically referred to as the main module, for scheduling all inter-module messages. The scheduling process is designed to maximize the feasible entropy of the communication system, ensuring that each periodic or aperiodic message adheres to its allowed entropy range.

In this scenario, certain operating system tasks are associated with master-slave communication protocols such as Modbus. These protocols involve request/response messages (frames) whose length is determined based on the specific requirements of the application. Similar to other tasks, each message, denoted as m_i , is associated with its own set of constraints, including a deadline (d_{m_i}) and a worst-case message transmission time (WCTT $_{m_i}$). Considering that the

scheduler determines the length of every frame, the minimum reserved entropy, which applies to periodic messages and must be satisfied, can be expressed as follows:

$$H_{\min, \text{per}}(M) = E \left[\log_2 \left(\frac{d_{\max, m_i}}{\text{WCTT}_{m_i}} \right) \right] \\ = \sum_{i \in \text{per}} \frac{\text{WCTT}_{m_i}}{d_{\max, m_i}} \log_2 \left(\frac{d_{\max, m_i}}{\text{WCTT}_{m_i}} \right). \quad (20)$$

In this context, d_{\max, m_i} represents the maximum allowable deadline for message m_i that needs to be considered and per represents the set of periodic messages that should be repeated at least once within the desired period.

However, we use the following expression to estimate the maximum available entropy of the communication channel:

$$H_{\max, \text{bus}}(M) = E \left[\log_2 \left(\frac{P_{\text{hper}, m_j}}{\min(\text{WCTT}_{m_j})} \right) \right] \\ = \sum_{j \in M} \frac{\min(\text{WCTT}_{m_j})}{P_{\text{hper}, m_j}} \log_2 \left(\frac{P_{\text{hper}, m_j}}{\min(\text{WCTT}_{m_j})} \right). \quad (21)$$

Ultimately, through the subtraction of the preceding two equations, we can derive the residual capacity of the communication channel, denoted as H_{rem} . This available capacity can be allocated for aperiodic messages or, in the absence of such messages, used for further repetitions of the periodic messages:

$$H_{\text{rem}}(M) = H_{\max, \text{bus}}(M) - H_{\min, \text{per}}(M). \quad (22)$$

For instance, in the design of an integrated elevator system product that is designed with this proposed RTOS, the control panel main module communicates with dozens of other modules (e.g., motor drive, encoder, car, and floor panels) using Modbus-RTU protocol at 38400 bauds. For optimal movement, the main control module periodically reads one word of shaft encoder, drive, and floor panels' main parameters at least every 50 ms, 200 ms, and 500 ms, respectively, with implicit deadlines, i.e., $d_{m_i} = p_{m_i}$.

So, if the size of each send/receive frame, e.g., with function 3 of Modbus (read holding registers), is about 17 bytes, we have

$$\begin{aligned} \text{WCTT}_{m_i} &= \text{frame length in bytes} \times \frac{\text{bits of byte}}{\text{baud}} \\ &= 17 \times \frac{8}{38400} = 3.54 \text{ ms}, \quad i=1, 2, 3. \end{aligned} \quad (23)$$

Thus, the minimum allocated entropy reserved for the rest of the messages is given by

$$\begin{aligned} H_{\min, \text{per}}(M) &= \frac{3.54}{50} \log_2 \left(\frac{50}{3.54} \right) + \frac{3.54}{200} \log_2 \left(\frac{200}{3.54} \right) \\ &\quad + \frac{3.54}{500} \log_2 \left(\frac{500}{3.54} \right) \\ &= 0.2705 + 0.1030 + 0.0505 = 0.424 \text{ bits}. \end{aligned} \quad (24)$$

Given that the hyper-period of periodic messages is 1000 ms (the least common multiple of 50 ms, 200 ms, and 500 ms), the maximum available message entropy of the communication channel is

$$H_{\max, \text{bus}}(M) \approx \log_2 \left(\frac{1000}{3.54} \right) = 8.1420 \text{ bits}. \quad (25)$$

In this example, the maximum available message entropy $H_{\max, \text{bus}}(M)$ is about 8.1420 bits, significantly greater than the minimum reserved entropy $H_{\min, \text{per}}(M)$ of 0.424 bits. This suggests that the main module can schedule almost every aperiodic message, such as motor stop, set motor speed, and door open/close, among other periodic messages, ensuring that all deadlines are met. The proposed method for scheduling messages across communication channels can use different mechanisms, including polling-based algorithms or EDF. The primary programming paradigm for user application development is based on the polling-based method.

4.5 Object-emulated programming for application

Considering the fundamental differences from common programming methods, where programmers typically start from scratch and gradually expand their programs using disparate and inconsistent libraries and threads, the proposed approach involves running the operating system as well as numerous libraries and

drivers in the background of the processor's boot layer. This allows for minimal resource utilization while enabling unrestricted execution of foreground applications. As a result, application programmers can also write and execute their programs akin to bare-metal programming, using their preferred IDE and invoking maximum libraries or drivers leveraging control variable settings through pooling strategies. This flexibility extends to both local and remote environments, accommodating an infinite number of tasks and processes within the operating system. Within this framework, each resident task or process can be viewed as an active and tangible system implementation, introducing a new paradigm in application programming. In addition to inheriting properties from object-oriented programming, this approach empowers programmers to exert control over object implementations by adjusting the control variables. The term we use in this paper to describe this overarching structure is "object-emulated programming," which promises to offer a fresh perspective and transformative possibilities in the field of application programming.

In the operating system described, a single timer interrupt, occurring every 510 CPU clock pulses (approximately 16 μs), is used for task scheduling. As a result, other processor resources are accessible and can be controlled by user applications or through tasks or another host and remote operating system. While the user application program is running in the foreground, the scheduler timer interrupts the program's execution when triggered. This interruption allows the execution of the current periodic task, provided that it is ready to run. Once the periodic task is executed, control is then returned to the user application program. Consequently, the user application program can be perceived as a substantial pre-emptive task, while other periodic tasks within the operating system are considered non-preemptive.

The operating system is optimized to achieve maximum task entropy, with the aim of maximizing system utilization while keeping all system applications in a standby state. To activate system applications, data flags, referred to as control variables, are used, which are monitored by continuously polling their associated status indicators. These control variables can be set by the remote user application program through communication channels, such as function

16 of Modbus, or through other local applications or tasks. This approach, formed runtime programming, provides a high degree of freedom for non-critical applications in terms of timing, enabling control of the operating system and programming under it without the need for a compiler, library, or threading. Additionally, there is a minimum requirement to call any functions since all of them are integrated in the kernel either in standby or active mode.

Program 1 is a sample program in C# that exemplifies the “object emulated programming” paradigm, running on a computer but emulating a remote module with an address (Device Address) in near real time.

Program 1 A sample object-emulated program in C# on the XIRAC operating system

```
1 My computer. Communication protocol="ModBus_TCP";
2 device Zone. device Zone=new device Zone (Form1. Device
Address);
3 device Zone. On Off password (zone Index, password);
...
4 if (device Zone. Remote Password [1]=="0x23E2A")
{
5 device Zone. Active Delay (3, 25);
6 device Zone. On Off State (3, true);
7 My Device. Display Buffer (device Dialler. Tel Number
(1), 40);}
...
```

In this case, line 1 delineates the communication protocol used for data transmission with the remote module. Line 2 introduces a tangible object labeled as ‘device Zone’ representing the remote module, identified by the address ‘Device Address,’ and equipped with various properties and methods. For instance, in line 3, the password of the zone with index ‘zone Index’ is set to ‘password.’ Line 4 waits for someone around the remote module to press the remote-control button corresponding to code ‘0x23E2A,’ and if detected, commands from lines 5 to 7 will be executed. These commands include setting the active delay of zone 3 to 25 s, turning on this zone, and displaying the phone number stored in memory index 2 on the connected screen of the remote module.

Following the development and manufacture of numerous functional products using this operating system, there is a pressing requirement for processor

architectures and corresponding compilers that can be tailored to be compatible with the proposed operating system, thereby enhancing overall performance. Among other features, the program memory can be divided into intelligent blocks, capable of containing various tasks whose location, size, and repetition rate are set by user applications or compilers, characterized with a specific allocation table and synchronized with the scheduler.

5 Performance assessment

In this section, we conduct a performance evaluation of the proposed operating system, comparing it with other static or dynamic scheduling algorithms. Given that most comparison parameters, such as jitter, are a type of random signal and random variable, we use an experimental embedded system designed with the proposed platform as a test system. The simulator software is not suitable for comparison because it cannot emulate real systems from a dynamic perspective. This approach shifts the complexity from simulation to hardware resources.

Since the proposed framework can manage a substantial number of tasks and time slots, performance comparisons are typically carried out on a logarithmic scale. All graphs demonstrate the enhanced efficiency of the proposed approach as the number of tasks, processes, and program size experience significant growth. Note that the comparison between different methods might not always be conducted in precisely identical environments; the dynamic behavior comparison underscores the superiority of the proposed method as the user application leans towards a robust framework. These comparisons are conducted against scheduling algorithms such as RM and EDF.

In the first stage of the performance evaluation, Table 1 compares the total system entropy among the proposed method, EDF, and RM algorithms in relation to the number of task requests. Using Eq. (1), the total system entropy is calculated, wherein the probability $P(x_i)$ is determined as the quotient of executed instances of request i to the overall number of requests within a single hyper-period (one second).

The specific equation used to calculate total system entropy is not provided in the text but is referred

to as Eq. (1). This equation likely involves a summation or integration over the set of non-repetitive user requests, capturing their probability distribution within the hyper-period. The table visualizes how the total system entropy changes as the number of task requests varies. Entropy, in this context, is a measure of the system's disorder or unpredictability. Higher entropy indicates greater disorder, while lower entropy suggests a more predictable system.

Table 1 provides insights into how well the proposed method handles variable numbers of task requests compared to EDF and RM algorithms. Once the transaction count exceeds 16 384, the system entropy of the proposed method surpasses 0.8 bits than that of EDF and RM algorithms. This suggests that our system's informational content approximately doubles compared to other algorithms. The table not only demonstrates the rise in system entropy but also facilitates a comparison of rejected task requests. This comparison provides insights into the system's robustness and its ability to manage a higher number of task requests effectively.

Table 1 Total system entropy versus the number of task requests for XIRAC, EDF, and RM

Number of transactions	System entropy (bit)		
	XIRAC	EDF	RM
64	6	6	6
128	7	7	7
256	7.98	7.99	7.99
512	8.97	9.1	9.2
1024	9.9	9.78	9.71
2048	10.85	10.57	10.6
4096	11.93	11.45	11.34
8192	12.87	12.34	12.28
16 384	13.89	13.05	13.01

The subsequent inquiry will explore comprehending the influence of this heightened entropy on enhancing the performance of the proposed system. This could include examining how the system handles task scheduling, response time, and overall efficiency facing a more diverse and dynamic set of task requests.

Fig. 1 depicts the delay in the user application loop, measured in microseconds, relative to the number of processes that are active. The graph offers insights into how the execution speed of the user

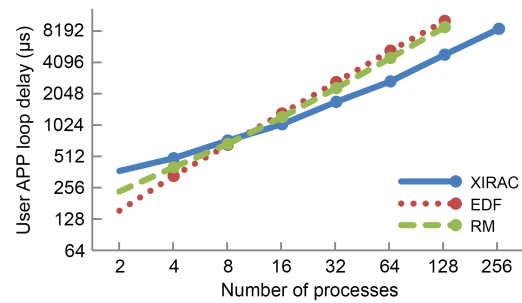


Fig. 1 User application loop delay versus the number of active processes for the XIRAC, EDF, and RM algorithms

application is impacted by the quantity of active processes and highlights the differences in performance between the proposed method and EDF/RM algorithms. As the number of active processes increases, the proposed operating system demonstrates a significantly improved execution speed for the user application program. This implies that the system can efficiently handle a larger number of concurrent processes without a substantial increase in loop delay. The maximum allowable number of processes for EDF and RM is less than that of the proposed method. This suggests that the proposed method outperforms other popular algorithms, especially in scenarios with a high number of active processes. The ability to handle a greater number of processes is crucial for the efficiency of the operating system in large and complex applications. The scalability of the proposed method is highlighted, indicating its capability to maintain or even enhance performance as the system deals with a growing number of active processes. This scalability is a desirable trait in product-oriented RTOSs, especially in applications with varying workloads.

Fig. 2 shows the quantity correlation between tasks and active processes. As the number of processes within the user application experiences a substantial

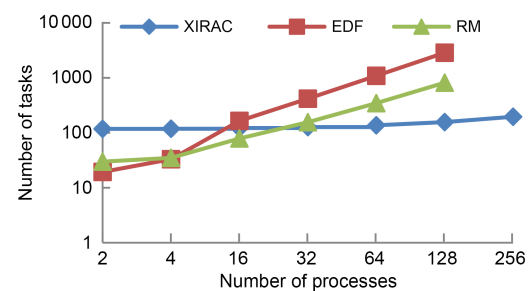


Fig. 2 Relationship between the number of tasks and the number of processes in XIRAC, EDF, and RM algorithms

increase, the count of active tasks within the proposed operating system remains more stable than in systems using EDF and RM algorithms.

In the proposed approach, a deliberate effort is made to sustain the count of active tasks at a consistently high level, ensuring optimal performance within a robust system architecture. The stability in the number of active tasks is a key feature that contributes to the proposed method's efficiency and reliability, especially in scenarios with varying workloads.

Note that, for the same reasons mentioned earlier, the maximum allowable number of processes for EDF and RM is less than that of the proposed method. This observation further emphasizes the scalability and adaptability of the proposed operating system, allowing it to handle a higher number of processes in robust product-oriented designs, without compromising performance or system stability.

In Fig. 3, the success ratio (SR) is compared between the proposed method and the EDF algorithm, with respect to the number of inter-module transactions. The SR is a crucial metric, indicating the percentage of the number of successfully scheduled tasks out of the total number of task arrivals. The equation for calculating the SR is given by (Avan et al., 2023):

$$SR = \frac{\text{Number of successfully scheduled tasks}}{\text{Total number of task arrivals}}. \quad (26)$$

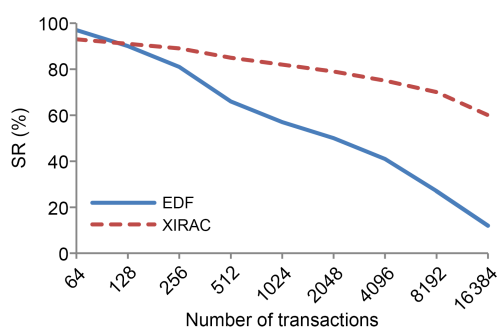


Fig. 3 Success ratio (SR) versus number of inter-module transactions

As shown in Fig. 3, the SR in the proposed operating system exhibits a significant improvement as the number of transactions increases. The comparison with EDF-based method highlights the superior performance of the proposed system, particularly in scenarios with a high volume of inter-module transactions.

In another analysis, the distribution of task requests remains consistent with an average of 8192 requests per second. Different values of the parameter μ are applied to the probability distribution equation. Furthermore, a pioneering task scheduling framework is explored, incorporating a Poisson probability distribution characterized by varying task durations. In this Poisson model, the parameter λ is set equal to the mean number of requests, with values of $\lambda=8192$ and $\lambda=4096$ being examined.

Fig. 4 illustrates the impact on the SR of using the maximum entropy probability distribution with a well-chosen parameter ($\mu=2.0$). The results confirm that incorporating this distribution significantly enhances the SR, emphasizing the effectiveness of the proposed method in achieving successful task scheduling under various conditions. In this experiment, we examine the effect of different μ values on task scheduling while keeping the task request distribution consistent, using the probability distribution described in Eq. (3). Additionally, we compare another task scheduling framework based on a Poisson probability distribution with variable task durations. In the Poisson model, the λ value is set to the average number of requests, specifically $\lambda=4096$ and $\lambda=8192$. Fig. 4 demonstrates that using the maximum entropy probability distribution with optimal parameters ($\mu=2.0$) significantly improves the SR. The proposed maximum entropy-based method considerably enhances the success and efficiency of the scheduling algorithm.

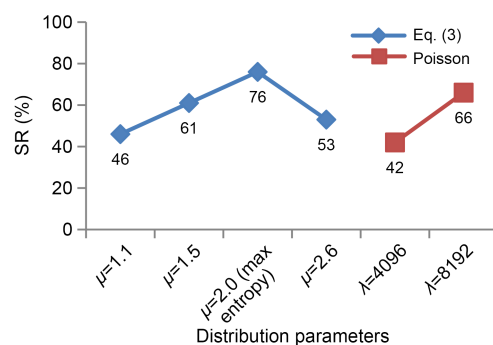


Fig. 4 Relationship between the SR and the probability distribution of tasks, with an average of 8192 requests per second. The distribution functions used in this analysis include Eq. (3) and the Poisson distribution

Fig. 5 illustrates the periodic jitter of a periodic task with a repetition rate of 1 kHz, as it relates to the

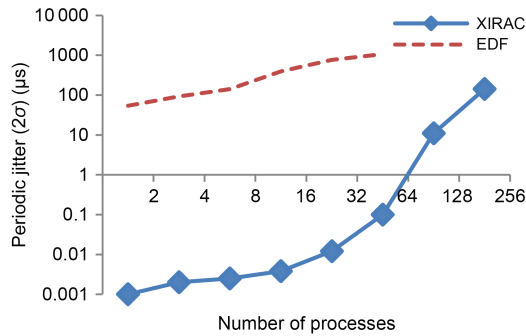


Fig. 5 Variation in jitter of a 1-kHz periodic task, in microseconds, as a function of the number of active processes

number of processes that are active. We estimate the periodic jitter for each task using twice the standard deviation of its Gaussian function (Najmi and Moon, 2020). This graph demonstrates a notable enhancement in the jitter within our proposed operating system compared to systems using the EDF algorithm. This suggests that the proposed operating system exhibits superior performance in minimizing jitter and maintaining task regularity, particularly when faced with varying numbers of active processes.

The benefits of the proposed method become particularly noticeable when managing a small number of transactions. Yet, as the transaction volume increases, the jitter is prone to escalate in comparison to other popular methods. This observation highlights the trade-offs and considerations when scaling the system to handle a higher volume of transactions.

6 Discussion: real-world applications of the XIRAC operating system in competitive products

The XIRAC operating system demonstrates exceptional versatility and adaptability across a variety of high-performance applications. Its ability to integrate seamlessly with different hardware platforms,

from microcontrollers to complex electronic systems, highlights its potential as a unified solution for both advanced and consumer-grade products. For a brief introduction to the capabilities of the proposed operating system in its commercial form, see Section 2.3 in the supplementary materials.

Table 2 compares XIRAC, Arduino UNO, and Raspberry Pi 3 boards. The first two structures are based on 8-bit, 20 MHz CPU, and 1 MHz serial peripheral interface (SPI) and Inter-integrated circuit (I2C), and the corresponding values for the third structure are 64 bits, 1.5 GHz, and 125 MHz, respectively. These structures serve as a basis for designing a sample product. XIRAC supports a significantly larger number of near-real-time applications compared to the libraries included in Arduino. To assess the impact of background applications on the execution of the main program, the state of one pin of the processor is inverted inside the main loop. For each state transition time of the output pulse, the average (mean delay) and jitter (double the standard deviation) are used to demonstrate the performance of XIRAC compared to bare-metal programming with Arduino. Similarly, the same parameters are measured for the Raspberry Pi 3, which has a Debian-based operating system. Note that, despite the bootloader, XIRAC allows the use of valuable libraries of other platforms in its application layer. This flexibility provides developers with the option to leverage existing libraries and tools while benefiting from the enhanced capabilities of the XIRAC operating system.

According to Table 2, in the proposed method, due to the optimal partitioning of the maximum number of applications into tasks and the optimal scheduling of these tasks in the kernel, the latency and jitter in task execution and instruction processing are significantly lower compared to that in existing platforms that use a set of heterogeneous functions in their system design. Regarding CPU power consumption,

Table 2 Comparison of XIRAC with Arduino UNO and Raspberry Pi 3 boards

Board	Libraries/Applications	Mean delay	Jitter (2σ)	CPU active power
Arduino UNO	OLED+Flash+Keyboard+3×PWM output+Modbus	850 μs	24 μs	0.43 W
Raspberry Pi 3	OLED+Flash+Keyboard+1×PWM output+Modbus+WiFi+ about 25 other applications	47 μs	49 μs	4.2 W
XIRAC	OLED+Flash+Keyboard+3-Acoustic out PWM+GSM+WiFi+ Modbus+Remote+Telecontrol+35 other applications	1.3 μs	0.3 μs	0.45 W

the use of XIRAC in product designs with considerable capabilities results in significantly lower power consumption compared to the Raspberry Pi 3, and it is within the range of Arduino UNO.

Fig. 6 provides an overview summarizing the three main components essential in each successful product-oriented project. These components are developed based on the proposed kernel platform, emphasizing robust applications. The three key sections encompass:

1. Embedded systems: engineered for unparalleled diversity and flexibility, offering support for infinite tasks and processes.

2. Diverse communication protocols: designed to be compatible with different environments through the implementation of the proposed messaging system, enhancing inter-module communication efficiency.

3. Flexible control features: empowering local or remote system control based on the object emulated programming paradigm. This is achieved through easily developed multiplatform interface software or other CPUs, facilitating seamless integration and control of the entire system.

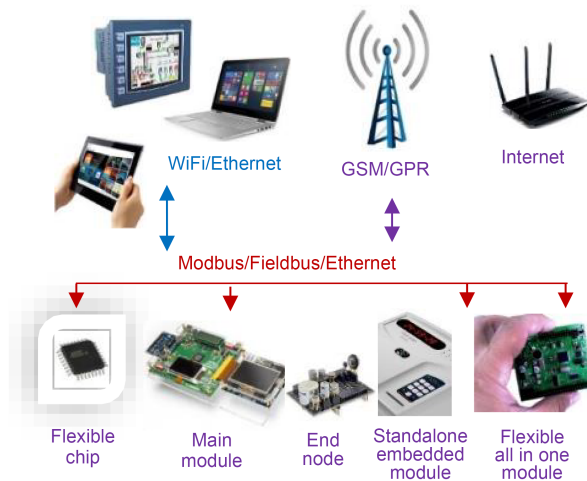


Fig. 6 Three main components required in each optimized product-oriented project: various embedded systems (bottom of this figure), diverse communication protocols (represented by arrows), and flexible control features (installed on a computer, tablet, mobile phone, or human-machine interface)

Below are some notable real-world implementations showcasing the competitive advantages of XIRAC:

1. Elevator integration system: over the past six years, XIRAC has been integral to the development of gearless and hydraulic elevator systems, meeting

stringent safety, reliability, and efficiency requirements (Fig. 7). Its real-time scheduling capabilities and deterministic behavior ensure precise motor control and fault-tolerant operation. These systems, now widely deployed, exemplify XIRAC's capability to manage inter-module communication in critical and high-demand applications.

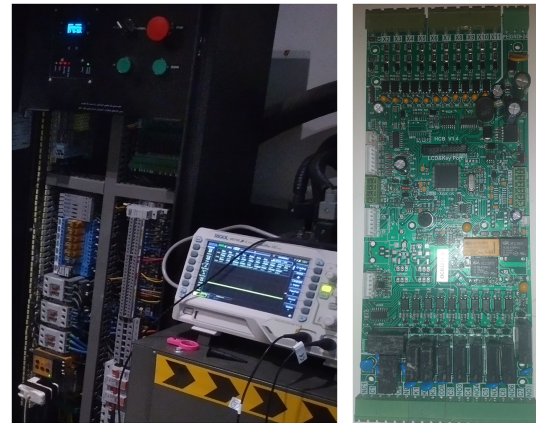


Fig. 7 Elevator integration system for gearless and hydraulic configurations, developed using the XIRAC operating system for precision task scheduling and safety-critical operations

2. Smart home and security systems: with more than 1000 units deployed, XIRAC serves as the backbone for smart home solutions, including security systems and energy management modules. This platform simplifies complex multi-node communication and data sharing across devices while ensuring low-latency responses to user inputs. Its scalability allows developers of varying expertise, including hobbyists, to implement and customize solutions effectively, fostering broader adoption in consumer markets (Fig. 8).



Fig. 8 Smart home and security system for real-time event management and modular scalability

3. Mass spectroscopy systems: XIRAC has been used in the electronic subsystems of Paul traps and quadrupole mass spectrometers, managing radio frequency (RF), signaling, and data acquisition tasks (Fig. 9). These applications benefit from XIRAC's ability to synchronize high-frequency data collection with real-time computational tasks. The operating system ensures precise timing and reliable communication, making it a critical component in high-precision scientific instrumentation.

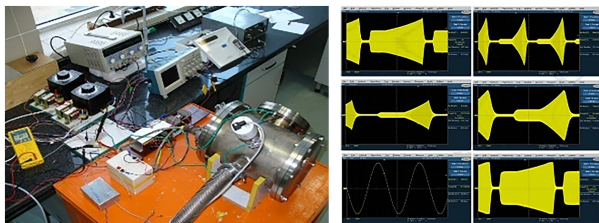


Fig. 9 Mass spectrometer electronics, enabling high-speed radio frequency (RF) signaling and precise data acquisition for Paul traps and quadrupole systems

4. Laser power supplies and Q-switching: in the domain of laser technology, XIRAC supports Q-switching and synchronous power supplies for extended laser systems (Fig. 10). Its deterministic task scheduling ensures consistent laser pulse timing and power delivery, crucial for applications in research and industrial processing. The integration of XIRAC into these systems demonstrates its ability to handle low-level hardware interactions with high temporal precision.

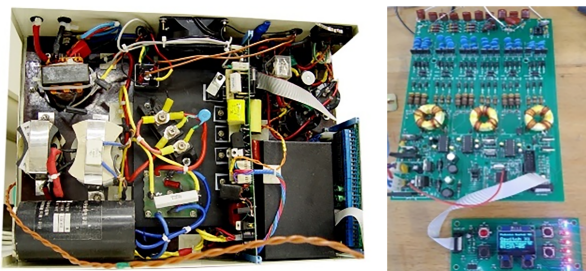


Fig. 10 Integrated laser Q-switching (right) and synchronized power supply unit (left)

5. Standalone chips and modules for development and education: a noteworthy innovation is the delivery of XIRAC as a pre-installed operating system on standalone microcontroller chips. These chips cater to both professional developers and educational users, enabling them to design systems with enhanced

portability and modularity. This feature facilitates rapid prototyping and product development without requiring a complete redesign for each platform.

7 Conclusions

In this study, we introduce an innovative approach that leverages Shannon's information theory and the Nyquist-Shannon sampling theorem to redefine the landscape of operating systems, aiming at improved performance and versatility. The theoretical framework developed strategically combines these theorems to maximize system entropy tolerance and optimize task scheduling based on statistical data.

The culmination of our efforts is the creation of the XIRAC operating system, featuring a robust architectural core seamlessly integrated into the operating system kernel. This core provides a dynamic platform, empowering user application development with unparalleled flexibility. The introduction of data flags and the reduction of dependencies on compilers, libraries, and threading mark a departure from traditional programming paradigms.

Our optimization approach, grounded in information theory, extends beyond conventional boundaries, sparking discussions about potential modifications to CPU architectures. XIRAC excels, particularly in scenarios with countless processes and tasks, showcasing its capability to handle robust and complex user application programs.

Additionally, the system's emphasis on maximizing feasible entropy in communication systems introduces novel methods for scheduling inter-module messages through common buses or communication channels. While contributing advancements to electronic product design, XIRAC is positioned as a contemporary solution for intricate systems, balancing efficiency with adaptability.

When combined with object-oriented programming, the integration of XIRAC reaches a new paradigm called object-emulated programming, enhancing the system's adaptability and efficiency through synergies between the robust architectural core and object-oriented principles.

In practical terms, particularly in resource-constrained scenarios, our results demonstrate a substantial improvement in execution speed, the maximum

allowable number of processes, SR, and jitter. XIRAC emerges as a noteworthy addition to the operating system domain, reshaping competitive electronic product development by redefining the three pillars: an embedded system with maximal task diversity, communication protocols providing extensive flexibility, and intuitive interface software equipped with user-friendly and intuitive capabilities for development.

In summary, our research not only introduces a novel operating system but also prompts a paradigm shift in the conceptualization and development of adaptable electronic systems, with an emphasis on balanced advancements and practical applicability.

Conflict of interest

The author declares that he has no known competing financial interests or personal relationships that could have appeared to influence the work reported in this paper.

Data availability

All data generated or analyzed during this study are included in this paper. Additional data related to this paper may be requested from the author.

References

- Abohamama AS, El-Ghamry A, Hamouda E, 2022. Real-time task scheduling algorithm for IoT-based applications in the cloud-fog environment. *J Netw Syst Manag*, 30(4):54. <https://doi.org/10.1007/s10922-022-09664-6>
- Avan A, Azim A, Mahmoud QH, 2023. A state-of-the-art review of task scheduling for edge computing: a delay-sensitive application perspective. *Electronics*, 12(12):2599. <https://doi.org/10.3390/electronics12122599>
- Fampa M, Lee J, 2024. An outer-approximation algorithm for maximum-entropy sampling. *Discrete Appl Math*, 347: 271-284. <https://doi.org/10.1016/j.dam.2024.01.002>
- Fang JH, Zhang R, Zhou AY, 2020. Load balance for distributed real-time computing systems. In: Zheng WA, Wang SP, Fang JH, et al. (Eds.), *East China Normal University Scientific Reports*. World Scientific, Singapore, p.83-107.
- Gaikwad JS, 2024. Multi-core system classification algorithms for scheduling in real-time systems. In: Kaiser MS, Xie JY, Rathore VS (Eds.), *ICT: Smart Systems and Technologies*. Springer, Singapore, p.229-237. https://doi.org/10.1007/978-981-99-9489-2_20
- He S, Li SZ, Chen Y, et al., 2015. Uncertainty analysis of race conditions in real-time systems. *Proc IEEE Int Conf on Software Quality, Reliability and Security*, p.227-232. <https://doi.org/10.1109/QRS.2015.41>
- ICP DAS USA Inc., 2024. Zigbee Wireless Modbus RTU Data Acquisition. https://www.icpdas-usa.com/zigbee_alliance_wireless_data_acquisition [Accessed on Feb. 10, 2024].
- Khezerloo D, Nedaie HA, Farhood B, et al., 2017. Optical computed tomography in PRESAGE® three-dimensional dosimetry: challenges and prospective. *J Cancer Res Ther*, 13(3):419-424. <https://doi.org/10.4103/0973-1482.202895>
- Khosravi Tanak A, Najafi M, Mohtashami Borzadaran GR, 2024. A new lifetime distribution by maximizing entropy: properties and applications. *Prob Eng Inform Sci*, 38(1): 189-206. <https://doi.org/10.1017/S0269964823000062>
- Kiyani A, Abdollahzadeh M, Sadat Kiai SM, et al., 2011. Designing of a quadrupole Paul ion trap. *J Fusion Energy*, 30(4):291-293. <https://doi.org/10.1007/s10894-010-9369-9>
- Kondaveeti HK, Kumaravelu NK, Vanambathina SD, et al., 2021. A systematic literature review on prototyping with Arduino: applications, challenges, advantages, and limitations. *Comput Sci Rev*, 40:100364. <https://doi.org/10.1016/j.cosrev.2021.100364>
- Li SZ, Zhang YZ, Luo HY, et al., 2018. Race-condition-aware and hardware-oriented task partitioning and scheduling using entropy maximization. *IEEE Trans Parall Distrib Syst*, 29(7):1589-1604. <https://doi.org/10.1109/TPDS.2017.2784829>
- Lisitsin DV, Gavrilov KV, 2024. The use of maximum entropy principle to construct robust estimators under point Bayesian contamination. Part I. *Appl Math Contr Sci*, (1):55-72 (in Russian).
- Microchip Technology, 2023. Microchip Studio for AVR® and SAM Devices. <https://www.microchip.com/en-us/tools-resources/develop/microchip-studio> [Accessed on Feb. 5, 2024].
- Min-Allah N, Khan SU, Wang YJ, 2012. Optimal task execution times for periodic tasks using nonlinear constrained optimization. *J Supercomput*, 59(3):1120-1138. <https://doi.org/10.1007/s11227-010-0506-z>
- Najmi AH, Moon T, 2020. *Advanced Signal Processing: a Concise Guide*. McGraw-Hill, New York, USA.
- Rincón CAC, Cheng AMK, 2017. Using information theory principles to schedule real-time tasks. *Proc 51st Annual Conf on Information Sciences and Systems*, p.1-6. <https://doi.org/10.1109/CISS.2017.7926091>
- Rincón CAC, Cheng AMK, 2018. SITSA-RT: an information theory inspired real-time multiprocessor scheduler. *Proc IEEE 21st Int Symp on Real-Time Distributed Computing*, p.156-163. <https://doi.org/10.1109/ISORC.2018.00032>
- Schäffler S, 2024. *Mathematics of Information: Theory and Applications of Shannon–Wiener Information*. Springer, Berlin, Germany.
- Scharfenaker E, Yang J, 2020. Maximum entropy economics. *Eur Phys J Spec Top*, 229(9):1577-1590. <https://doi.org/10.1140/epjst/e2020-000029-4>
- Shannon CE, 1948. A mathematical theory of communication. *Bell Syst Tech J*, 27(3):379-423. <https://doi.org/10.1002/j.1538-7305.1948.tb01338.x>
- Sharma R, Nitin, 2013. Visualization of information theoretic maximum entropy model in real time distributed system. *Proc 3rd Int Conf on Advances in Computing and Communications*, p.282-286.

- <https://doi.org/10.1109/ICACC.2013.60>
- Ünsalan C, Gürhan HD, Yücel ME, 2022. Embedded System Design with ARM Cortex-M Microcontrollers: Applications with C, C++ and MicroPython. Springer, Cham, Switzerland. <https://doi.org/10.1007/978-3-030-88439-0>
- Wang KC, 2017. Embedded and Real-Time Operating Systems. Springer, Cham, Switzerland.
- Zirak A, 2023. XIRAC-Q: a near-real-time quantum operating system scheduling structure based on Shannon information theorem. *Quantum Inform Process*, 22(11):403. <https://doi.org/10.1007/s11128-023-04155-2>
- Zirak A, Roshani S, 2016. A reduced switch voltage stress class E power amplifier using harmonic control network.

Int J Adv Comput Sci Appl, 7(5):38-42.

<https://doi.org/10.14569/IJACSA.2016.070507>

- Zirak A, Beygi P, Mirzakhah S, 2017. Dynamic estimation of the modeling error statistics in diffuse optical tomography. *Inverse Probl Sci Eng*, 25(4):492-505. <https://doi.org/10.1080/17415977.2016.1169280>

List of supplementary materials

- 1 Foundational functions and derivations
 - 2 An overview of the XIRAC commercial operating system
- Fig. S1 Range of capabilities and communication protocols supported by the 8-bit version of the XIRAC operating system