

Electronic Supplementary Material

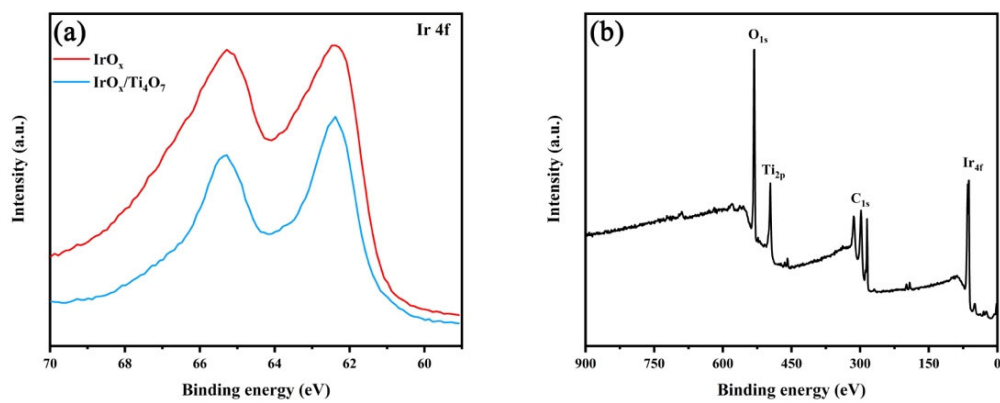


Fig. S1 XPS spectrum of IrO_x and IrO_x/Ti₄O₇.

(a) Ir 4f IrO_x and IrO_x/Ti₄O₇; (b) full XPS spectrum of IrO_x/Ti₄O₇.

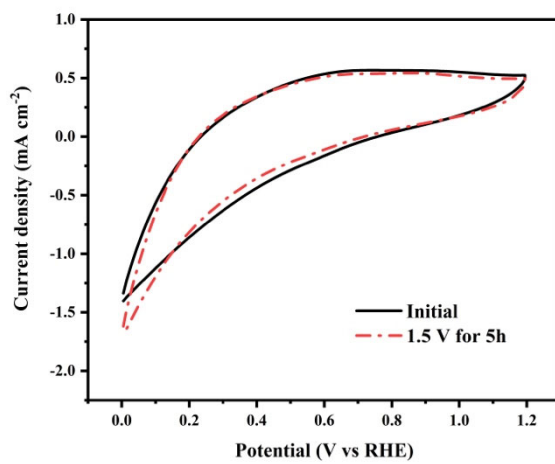


Fig. S2 CV curves of IrO_x/Ti₄O₇ before and after stability test.

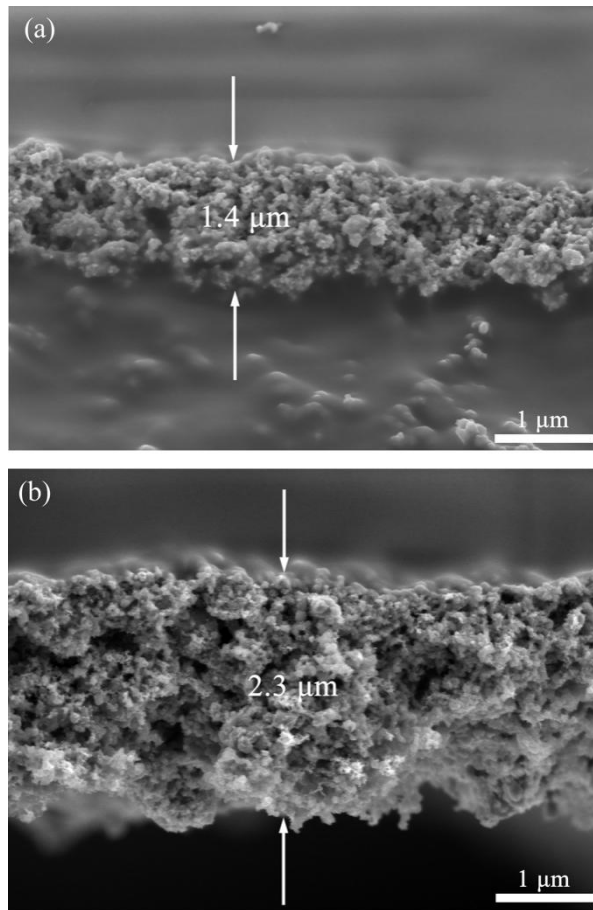


Fig. S3 SEM images of the cross section of anode CLs.

(a) MEA-2; (b) MEA-3.