

## Supplementary Material

**Table S1** Degradation temperatures of Real WEEE without or with catalysts

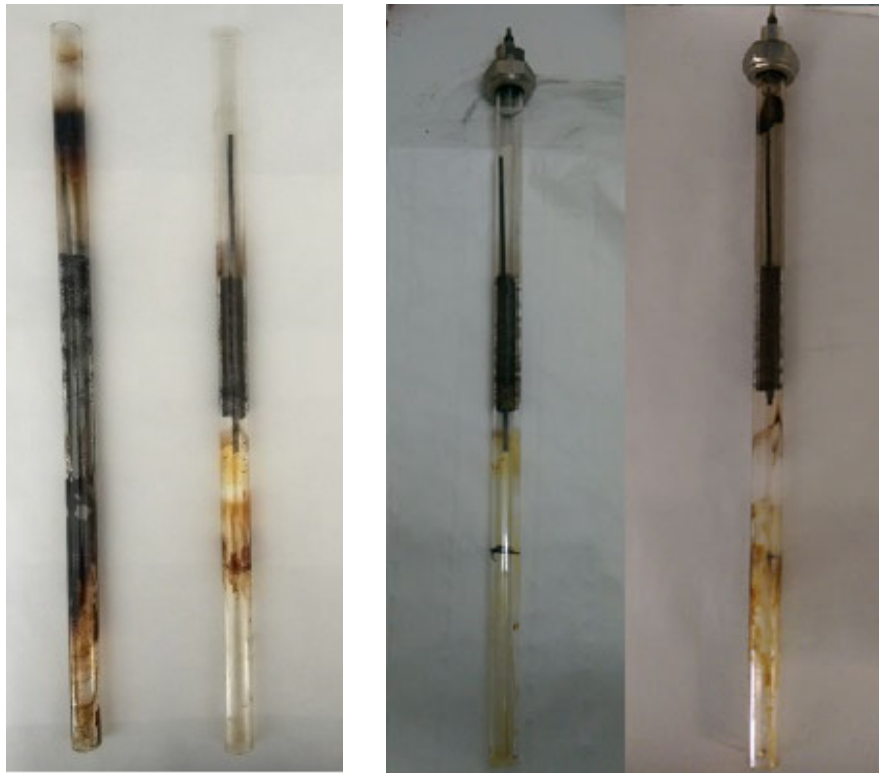
Sample	Degradation Temperature (°C)					
	Thermal	FA	FAMA	FAMB	HZSM5	HUSY
Real WEEE	422 ± 1	425 ± 2	425 ± 4	424 ± 3	418 ± 1	420 ± 1

**Table S2** Concentrations of benzene, toluene, ethylbenzene and styrene in the light oils, expressed as mg of hydrocarbon /g of oil

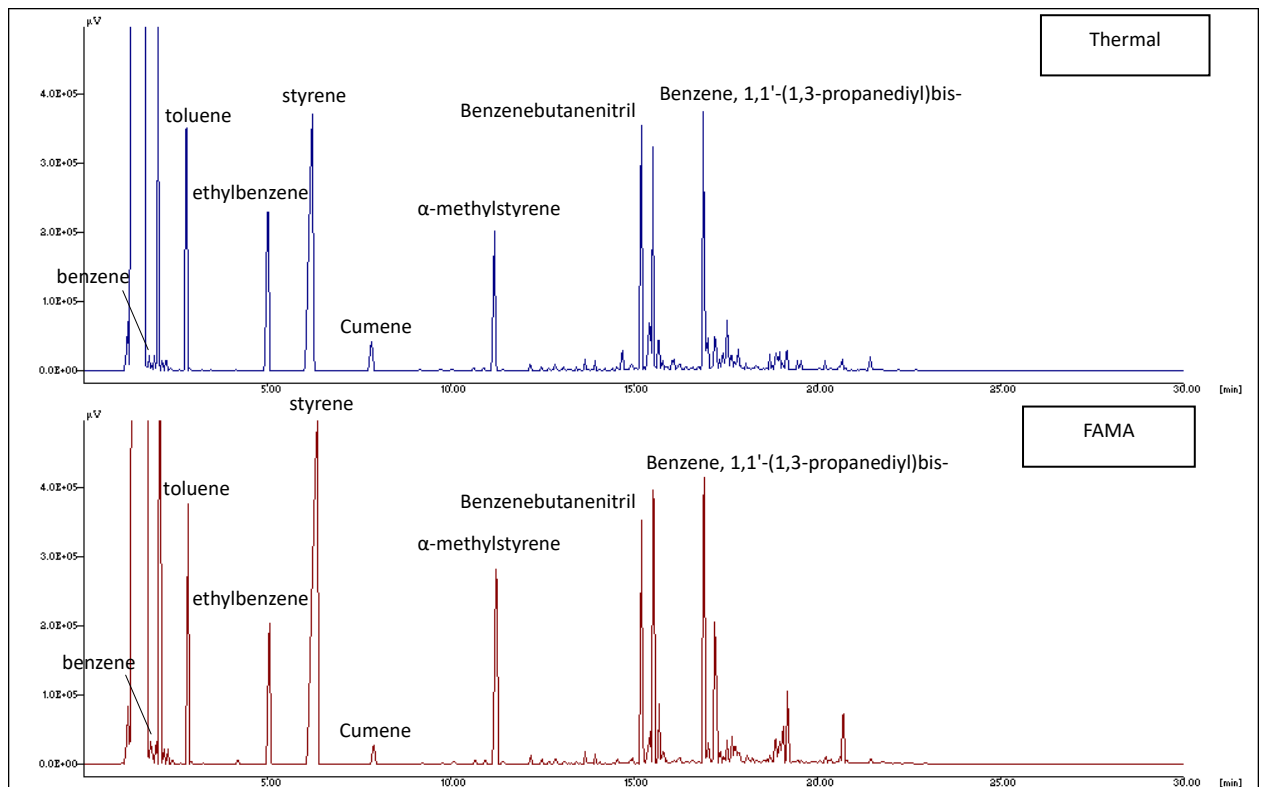
Experiment	Benzene	Toluene (mg/g)	Ethylbenzene	Styrene (mg/g)
	(mg/g)		(mg/g)	
Thermal	10 ± 1	118 ± 6	68 ± 3	243 ± 19
FA	9 ± 1	107 ± 5	56 ± 2	312 ± 10
FAMA	6 ± 1	112 ± 6	35 ± 6	367 ± 21
FAMB	8 ± 2	106 ± 8	25 ± 2	453 ± 43



**Figure S1** From left to right: FA, FAMB and FAMA



**Figure S2** Reactors after pyrolysis experiments, from left to right: Thermal, FA, FAMB, FAMA



**Figure S3** Comparison of GC-FID chromatograms regarding the oil produced from pyrolysis without catalyst (thermal) and with FAMA