

Supporting information

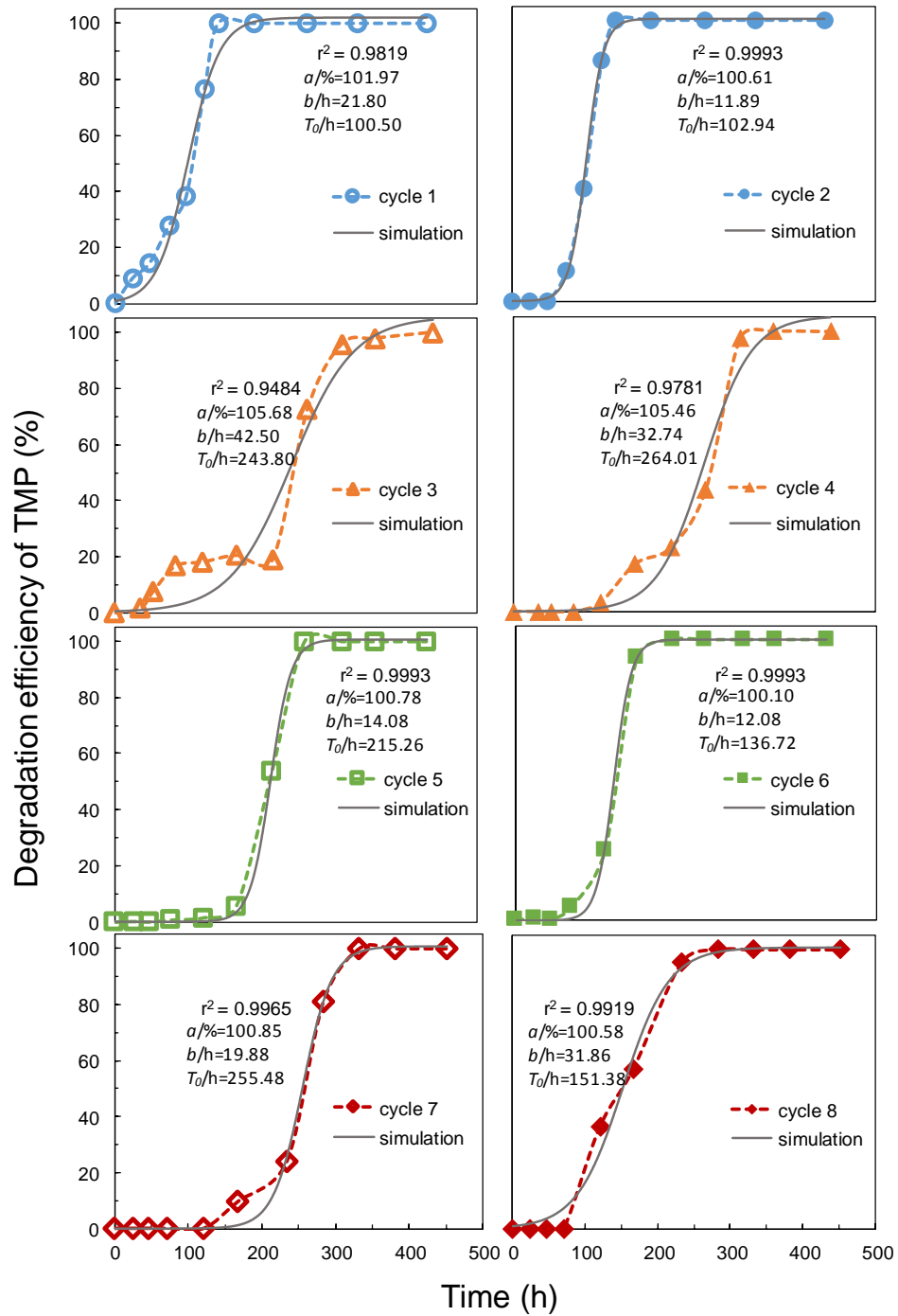


Fig. S1 The TMP biodegradation kinetics fit in the following eight generations (with activated sludge as the initial inoculum)

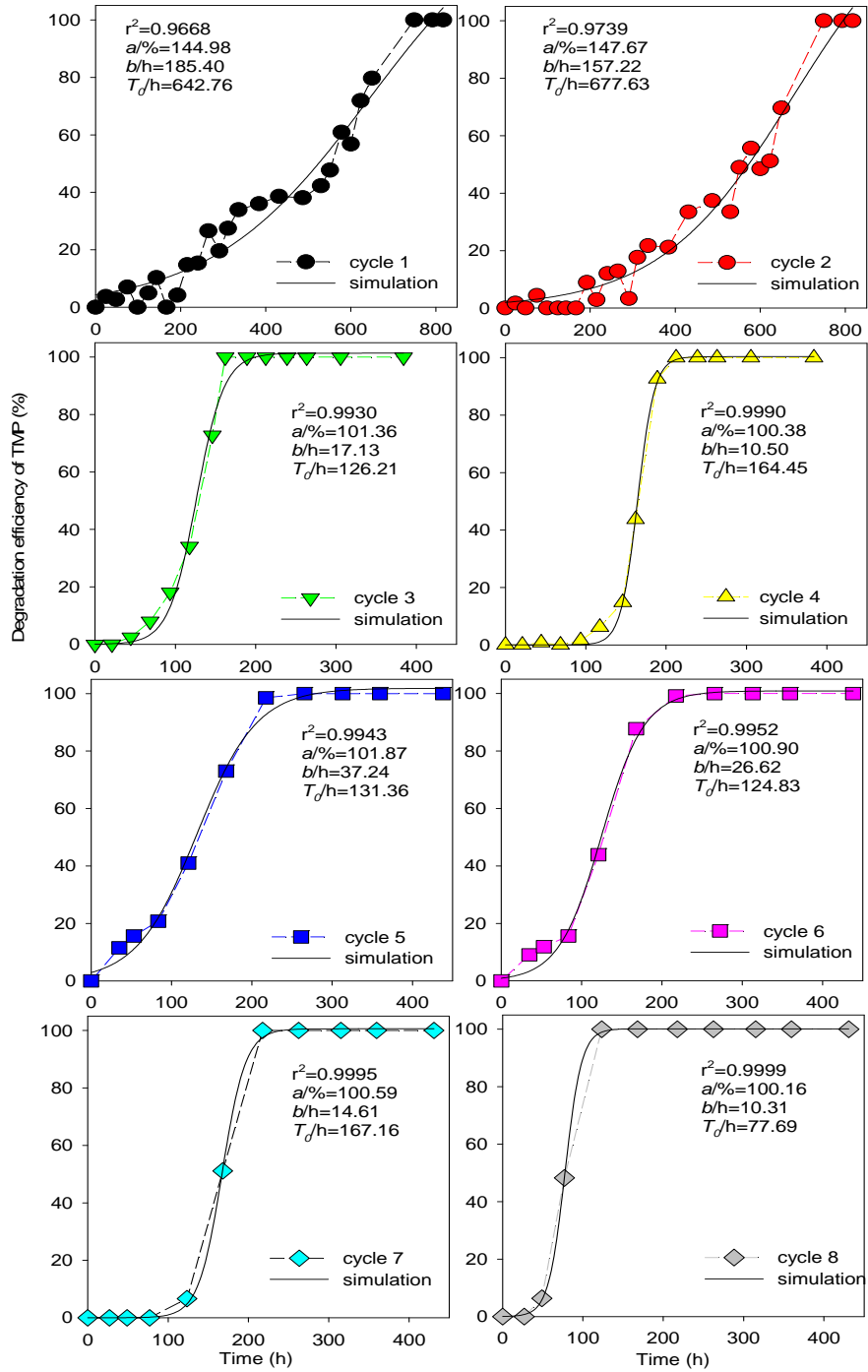


Fig. S2 The TMP biodegradation kinetics fit in the following eight generations (with a river sediment as the initial inoculum)

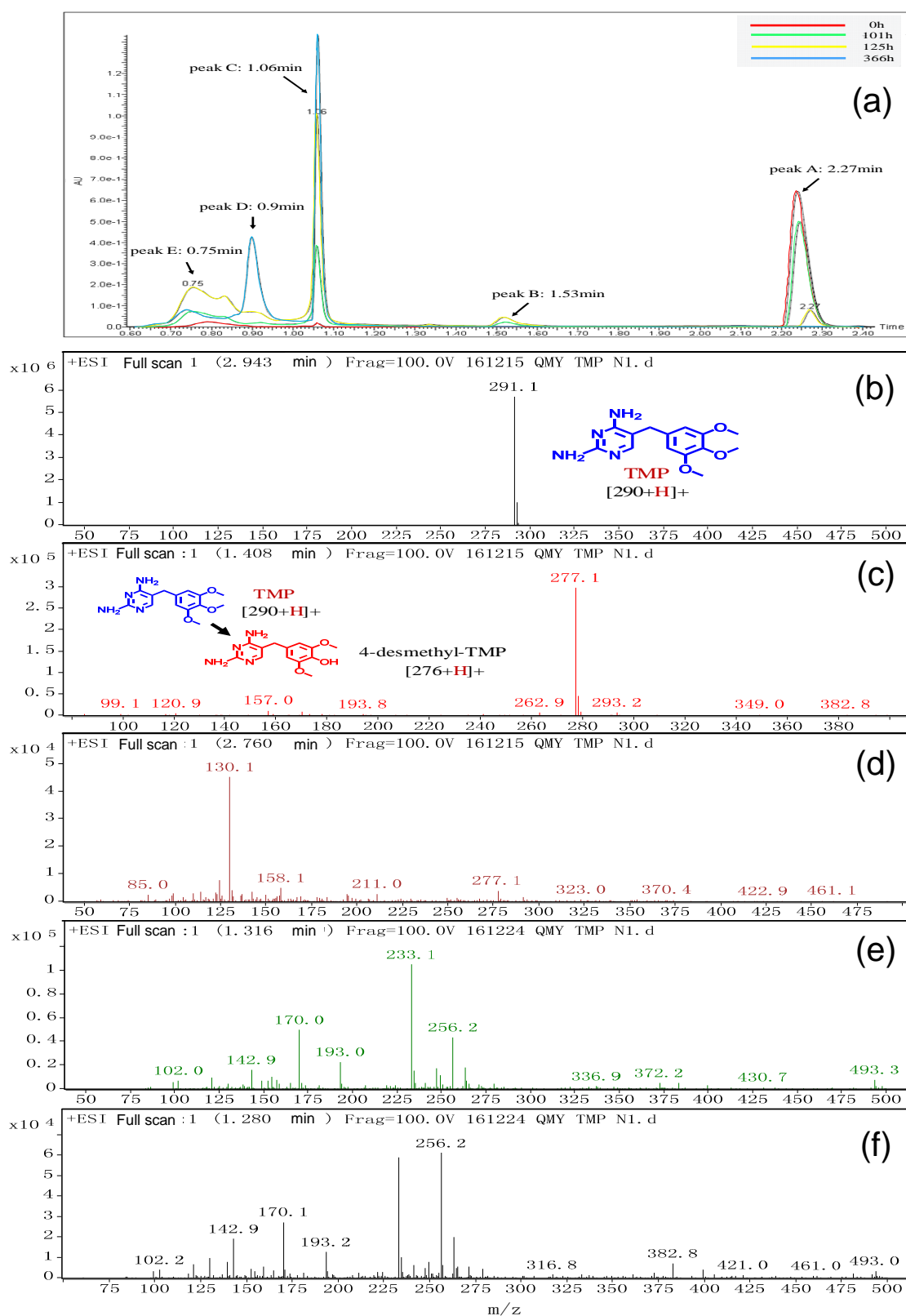


Fig. S3 The UPLC-MS identification of TMP transformation products (TPs): (a) the TIC profile of TMP and its TPs; the MS profile of (b) TMP (peak A); (c) 4-desmethyl-TMP (peak B) and (d–f) unknown TMP TPs (corresponding to peaks C–E) as shown in the TIC plot