

Supplementary material

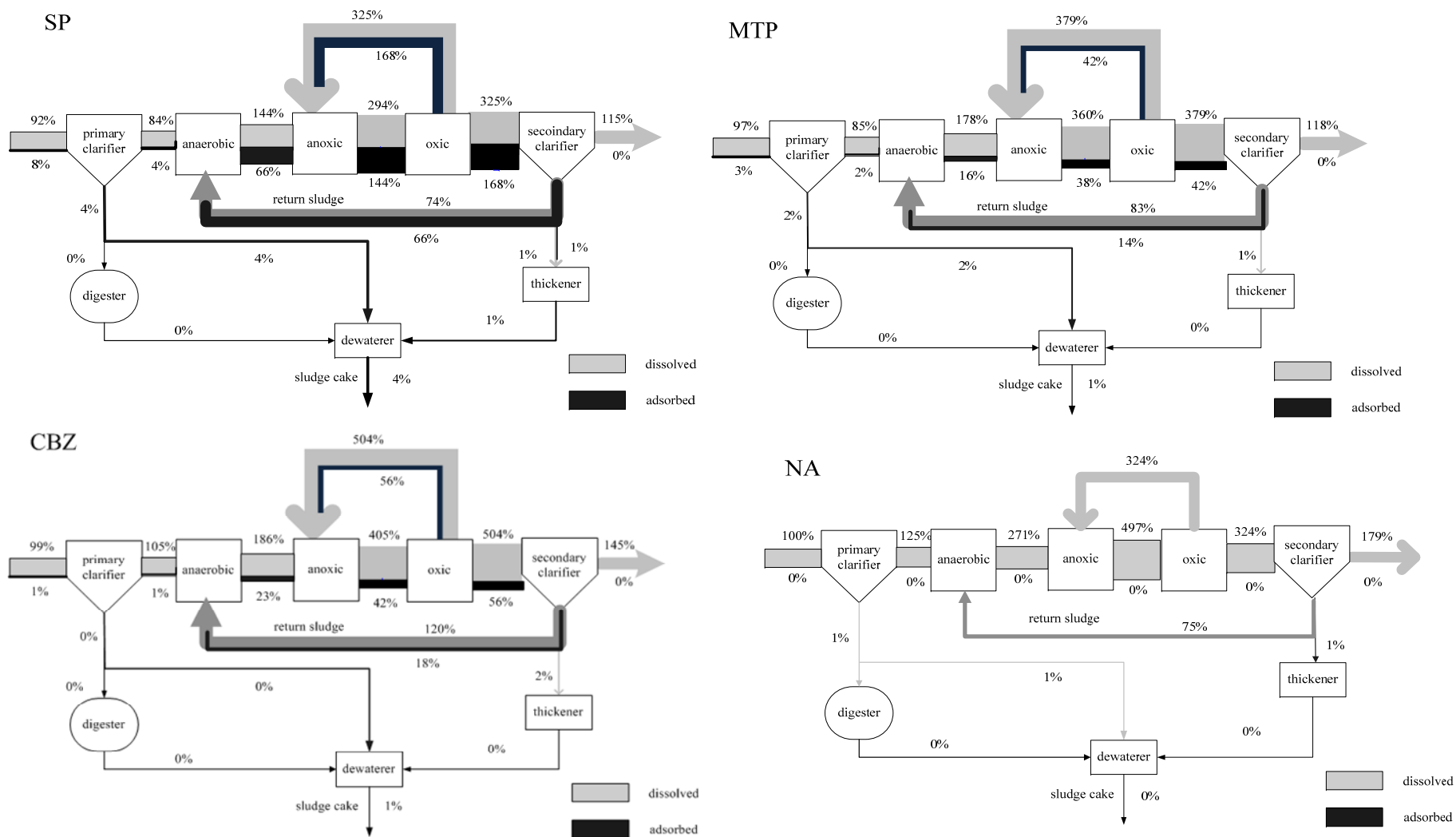


Fig. S1 Relative mass distribution of SP, MTP, CBZ and NA in each process unit

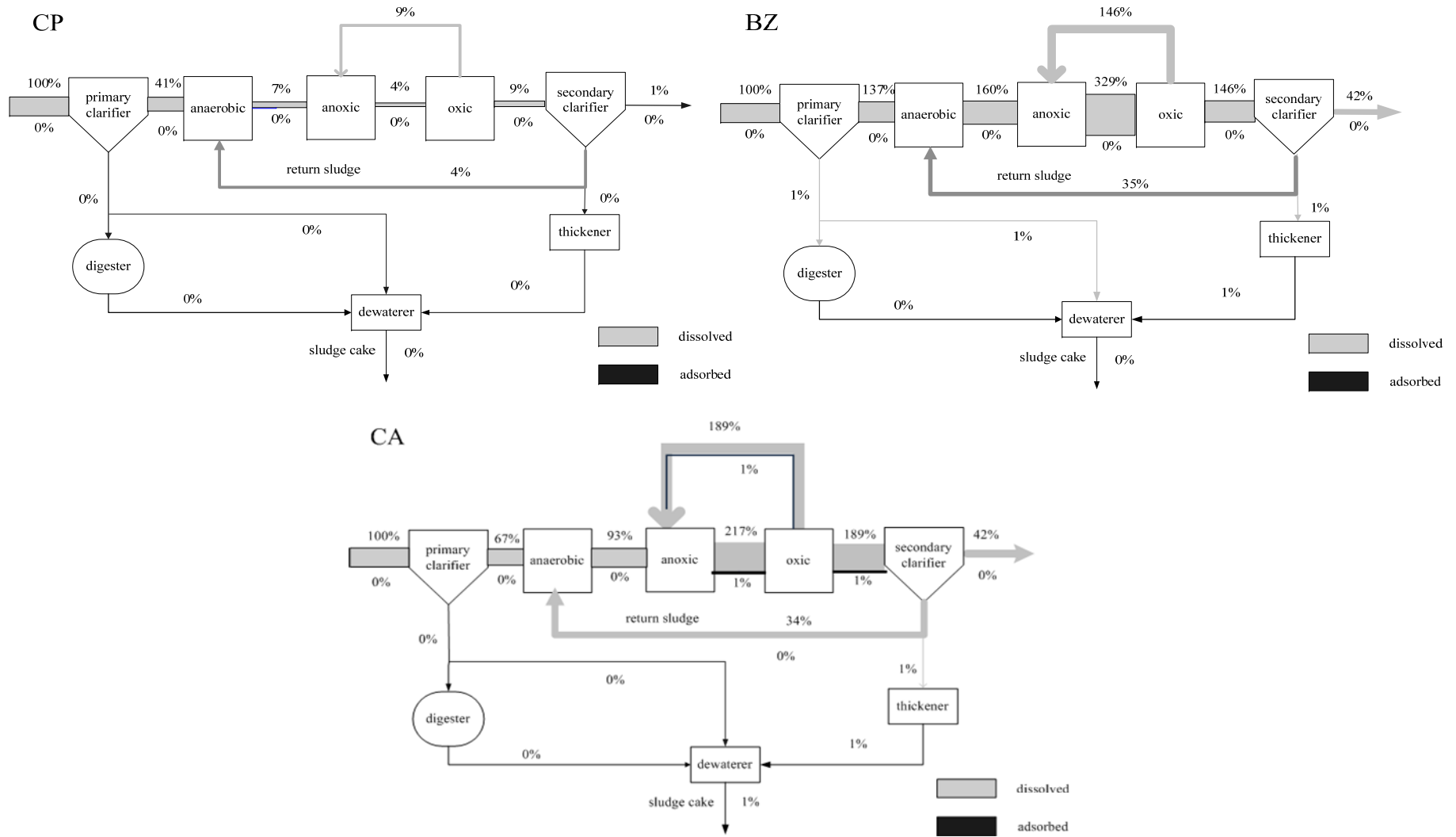


Fig. S2 Relative mass distribution of CP, BZ and CA in each process unit

Table S1 Dissolved mass of PPCPs in each unit

sample	flow rate/ (m ³ ·d ⁻¹)	PPCPs dissolved mass/ (g·d ⁻¹)								
		SP	CF	MTP	CP	NA	CBZ	DEET	CA	BZ
raw influent	711109	83	3826	68	55	12	63	1035	31	26
primary effluent	711109	76	3672	59	22	14	67	986	21	35
anaerobic	1251705	130	293	125	3.9	31	118	434	29	41
anoxic	2673923	265	153	253	2.4	57	258	799	67	84
oxic	2673923	293	3.9	267	4.8	37	321	313	58	37
secondary effluent	698935	104	2	83	0.6	21	92	76	13	11
primary sludge	2700	0.07	6.8	0.09	0.002	0.08	0.2	3.9	0.2	0.1
return sludge	543491	67	1.6	58	2.2	8.7	77	67	11	9
excess sludge	8700	1.1	0.03	0.9	0.03	0.1	1.2	1.1	0.2	0.1
digested sludge(in)	300	0.008	0.8	0.01	0.0003	0.009	0.03	0.4	0.02	0.01
digested sludge (out)	300	0.05	0.2	0.05	0.0003	0.05	0.06	0.3	0.05	0.02
thickened sludge	1800	0.2	0.01	0.2	0.004	0.01	0.2	0.1	0.04	0.04

Table S2 Adsorbed mass of PPCPs in each unit

sample	flow rate/ ($\text{m}^3 \cdot \text{d}^{-1}$)	particulate concentration/ ($\text{g} \cdot \text{m}^{-3}$)	particulate mass/ ($\text{kg} \cdot \text{d}^{-1}$)	PPCPs adsorbed mass/ ($\text{g} \cdot \text{d}^{-1}$)								
				SP	CF	MTP	CP	NA	CBZ	DEET	CA	BZ
raw influent	711109	230	163555	7.3	21	2.2	0.0008	0.001	0.6	5.3	0.005	0.0003
primary effluent	711109	124	88178	4	12	1.2	0.0004	0.0006	0.3	2.8	0.003	0.0002
anaerobic	1251705	2800	3504774	59	24	11	0.02	0.02	14	210	0.1	0.006
anoxic	2673923	2800	7486984	130	52	27	0.04	0.05	27	493	0.2	0.01
oxic	2673923	2800	7486984	152	61	29	0.04	0.05	36	428	0.2	0.01
secondary effluent	698935	8.5	5941	0.1	0.1	0.02	0.00003	0.00004	0.02	0.3	0.0002	0.00001
primary sludge	2700	30000	81000	3.6	11	1.1	0.0004	0.0005	0.3	2.6	0.003	0.0001
return sludge	543491	6000	3260946	59	30	10	0.02	0.02	11	165	0.1	0.006
excess sludge	8700	6000	52200	1	0.5	0.2	0.0003	0.0003	0.2	2.6	0.002	0.00009
digested sludge (in)	300	30000	9000	0.4	1.2	0.1	0.00004	0.00006	0.04	0.3	0.0003	0.00002
digested sludge (out)	300	20000	6000	0.3	0.3	0.1	0.00003	0.00004	0.03	0.5	0.05	0.02
thickened sludge	1800	25000	45000	0.9	0.3	0.1	0.0002	0.0003	0.2	3	0.3	0.2
sludge cake	830	17000	141100	3.3	3.6	1	0.0007	0.0009	0.4	8.7	0.3	0.0003