

Supplementary Material

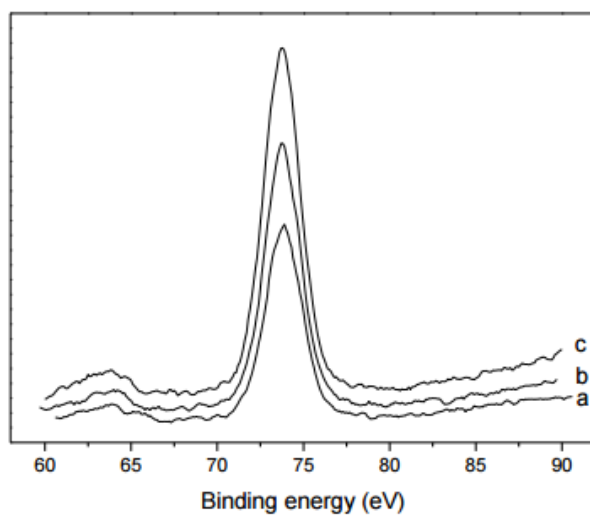


Fig.S1 Al XPS spectra of different catalysts.
(a. $\text{Fe}_2\text{O}_3/\gamma\text{-Al}_2\text{O}_3$; b. $\text{Fe}_2\text{O}_3\text{-CeO}_2/\gamma\text{-Al}_2\text{O}_3$; c. $\text{Fe}_2\text{O}_3\text{-CeO}_2\text{-Bi}_2\text{O}_3/\gamma\text{-Al}_2\text{O}_3$)

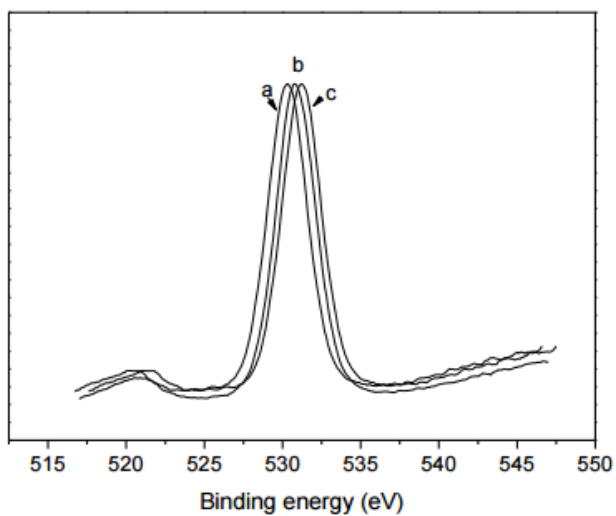


Fig. S2 O XPS spectra of different catalysts
(a. $\text{Fe}_2\text{O}_3/\gamma\text{-Al}_2\text{O}_3$; b. $\text{Fe}_2\text{O}_3\text{-CeO}_2/\gamma\text{-Al}_2\text{O}_3$; c. $\text{Fe}_2\text{O}_3\text{-CeO}_2\text{-Bi}_2\text{O}_3/\gamma\text{-Al}_2\text{O}_3$)