

Supplementary figure captions

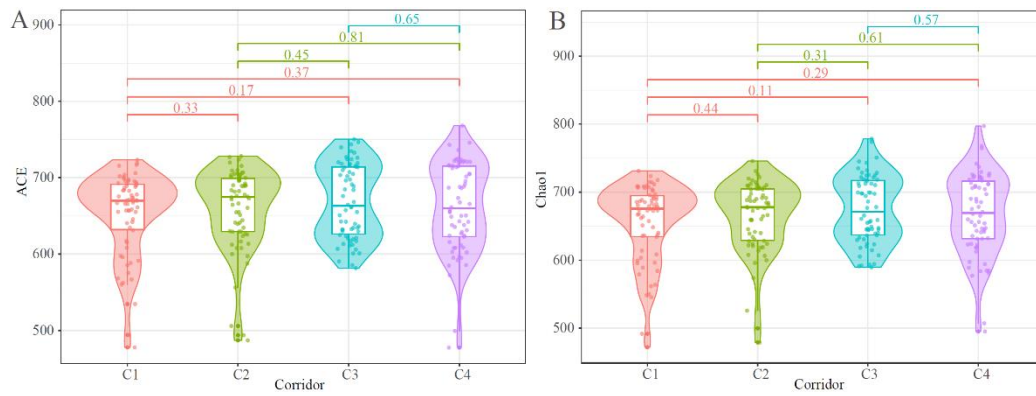


Fig. S1 Annual distribution of alpha diversity of the microbial communities from each corridor. Wilcoxon rank sum test was adopted to verify the significance of pairwise Richness index differences among different corridors. A: Annual distribution of ACE index of the microbial communities from each corridor; B: Annual distribution of Chao1 index of the microbial communities from each corridor.

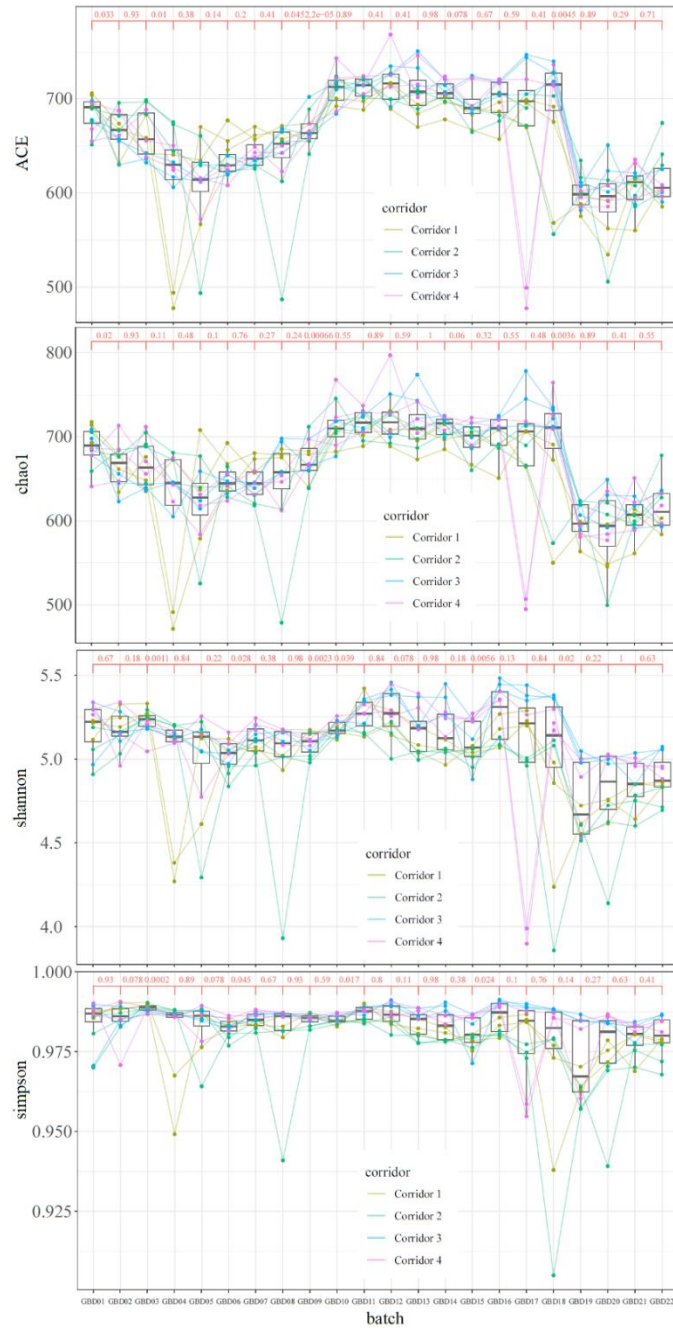


Fig. S2 The annual distribution of the alpha diversity indices (ACE, Chao1, Shannon, and Simpson index) of the microbial communities with pairwise Student's *t*-test.

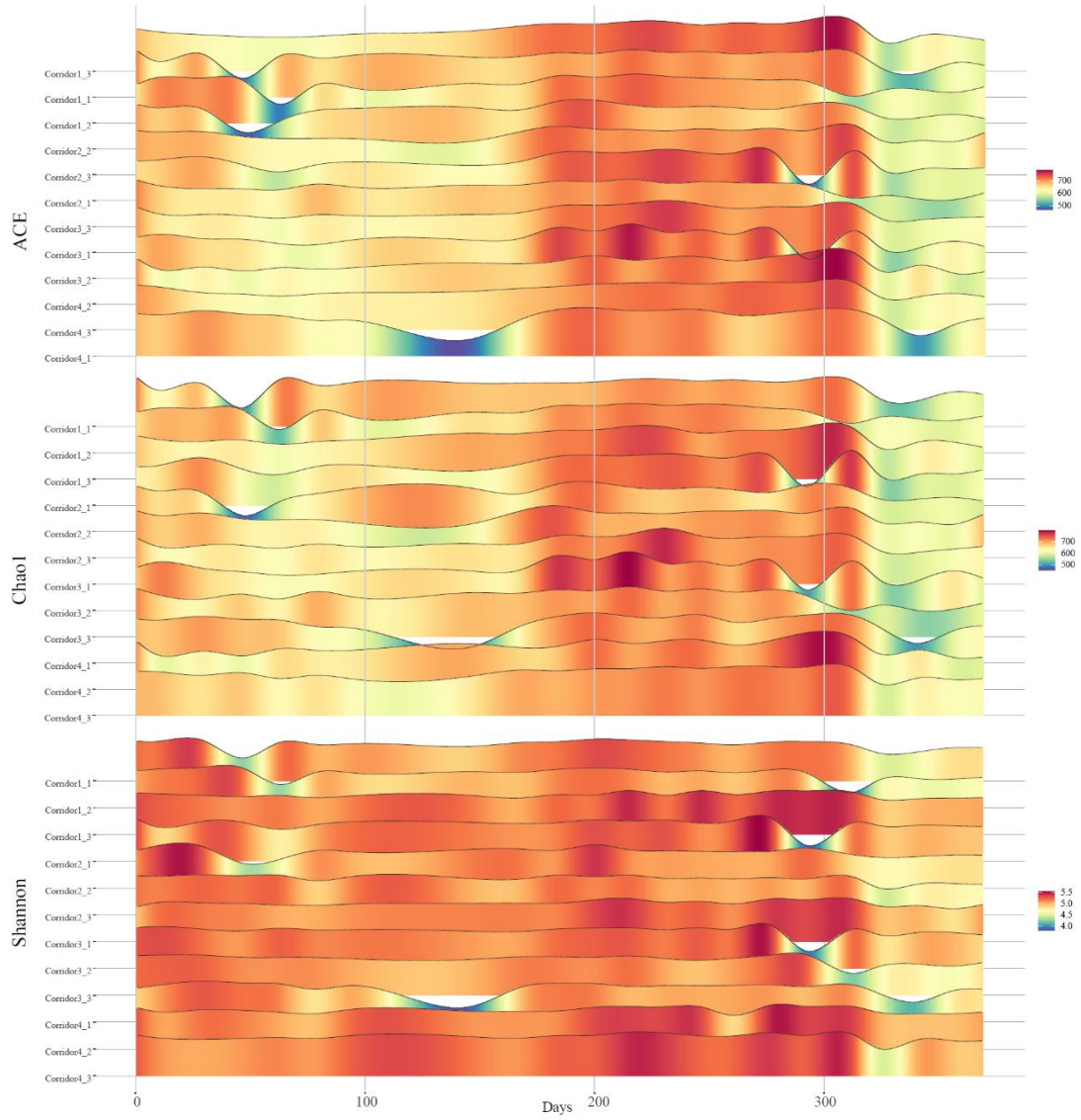


Fig. S3 Annual variation of alpha diversity indices (ACE, Chao1, and Shannon index) in each corridor. Each curve represents one biological replicate. The diversity curve is smoothed by interpolation.

