

Supplementary Information for:

Highly degradable chitosan- montmorillonite (MMT) nanocomposite hydrogel for controlled fertilizer release

Zeou Dou¹, Maria Vitoria Bini¹, Wensi Chen¹, Dongjing He², Yuhang Hu^{2,3}

and Xing Xie^{1*}

¹School of Civil and Environmental Engineering, Georgia Institute of Technology, Atlanta, GA, USA.

² George W. Woodruff School of Mechanical Engineering, Georgia Institute of Technology, Atlanta, GA, USA.

³ School of Chemical and Biomolecular Engineering, Georgia Institute of Technology, Atlanta, GA, USA.

*E-mail: xing.xie@ce.gatech.edu

Table of contents

Figure S1. Representative indentation measurement results. The fitting curve is generated based on Hertzian solution for frictionless spherical indenter..... 2

Figure S2. Pictures of dried chitosan-MMT nanocomposites of different MMT contents. 2

Figure S3. SEM images of Chitosan-MMT composites of different MMT contents, 0 wt% (a), 3.3 wt% (b), 10 wt% (c), 16.7 wt% (d), and 23.3 wt% (e), under high magnification..... 3

Figure S4. Cumulative fertilizer release of low molecular weight chitosan hydrogel (3 wt% short chain chitosan in pre-gel solution, 2.3 wt% GA crosslinker with respect to chitosan, 0.1 g dried gel in 30 mL DI water). 3

Figure S5. Water retention profile of soil and soil-gel mixture (see Materials and Methods section for details)..... 4

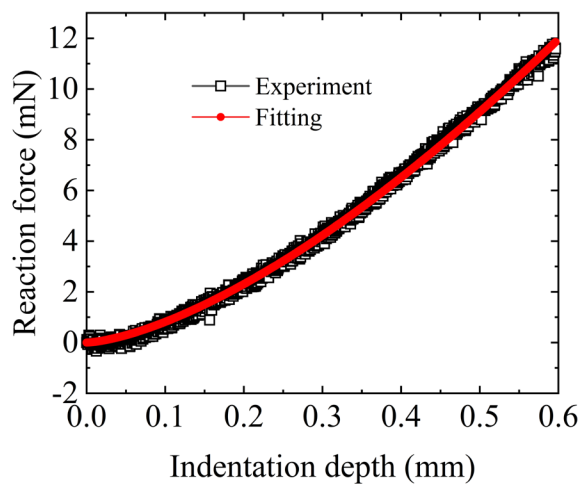


Figure S1. Representative indentation measurement results. The fitting curve is generated based on Hertzian solution for frictionless spherical indenter.



Figure S2. Pictures of dried chitosan-MMT nanocomposites of different MMT contents.

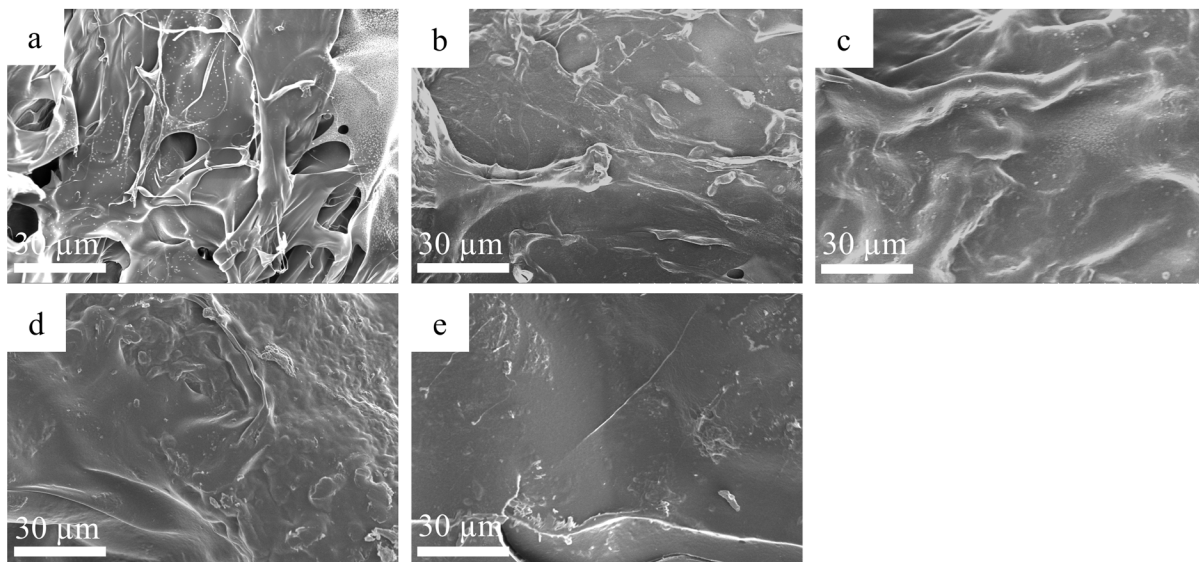


Figure S3. SEM images of Chitosan-MMT composites of different MMT contents, 0 wt% (a), 3.3 wt% (b), 10 wt% (c), 16.7 wt% (d), and 23.3 wt% (e), under high magnification.

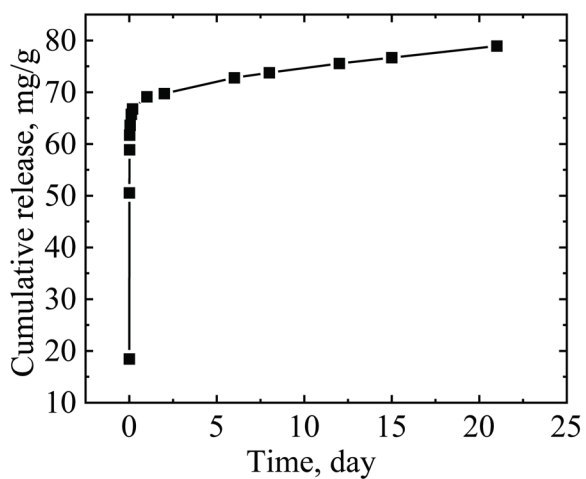


Figure S4. Cumulative fertilizer release of low molecular weight chitosan hydrogel (3 wt% short chain chitosan in pre-gel solution, 2.3 wt% GA crosslinker with respect to chitosan, 0.1 g dried gel in 30 mL DI water).

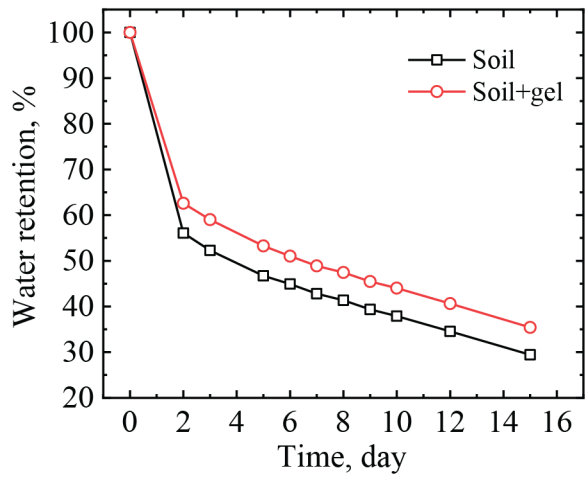


Figure S5. Water retention profile of soil and soil-gel mixture (see Materials and Methods section for details).