

Supporting materials

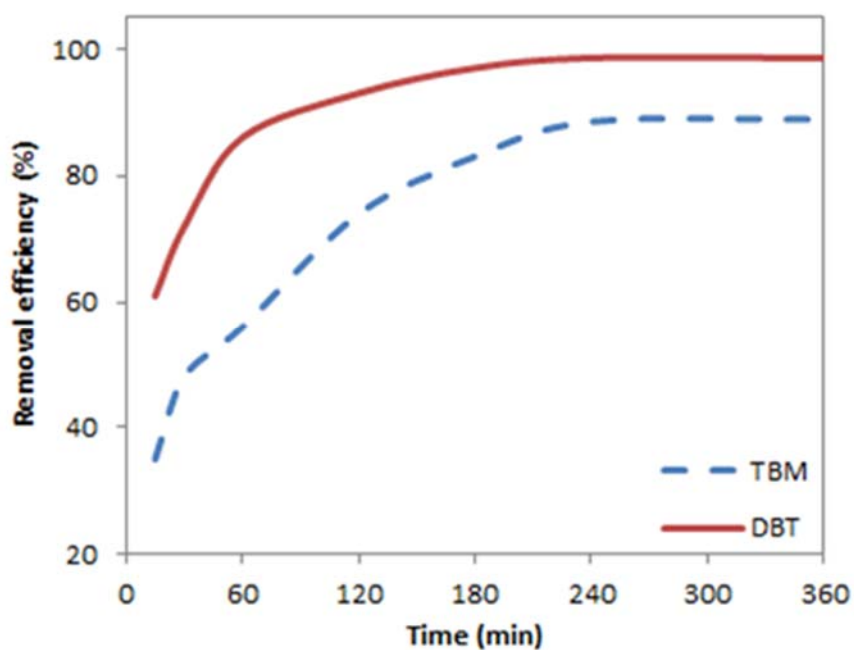


Fig. S1 The influence of the contact time during the desulfurization process on the adsorption capacity of TBM

& DBT

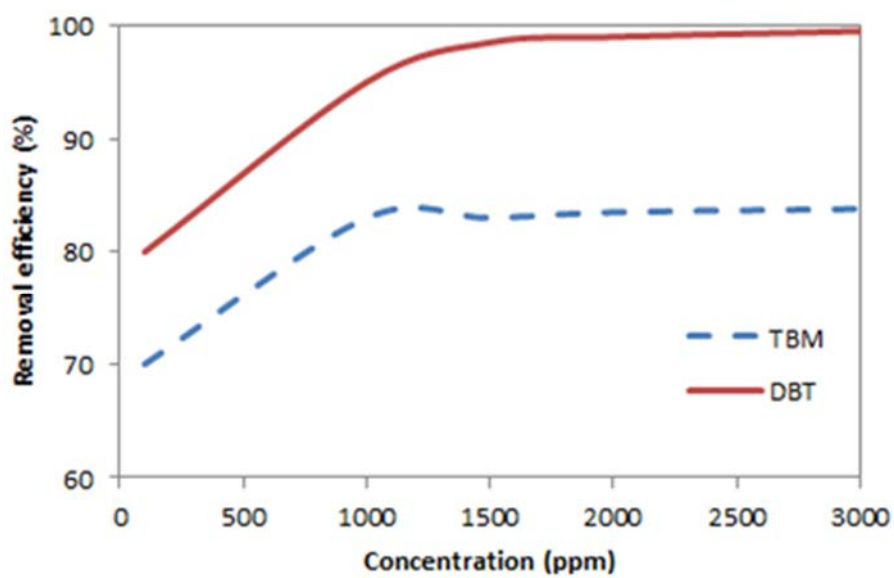


Fig. S2 Effect of DBT and TBM concentration on the removal efficiency

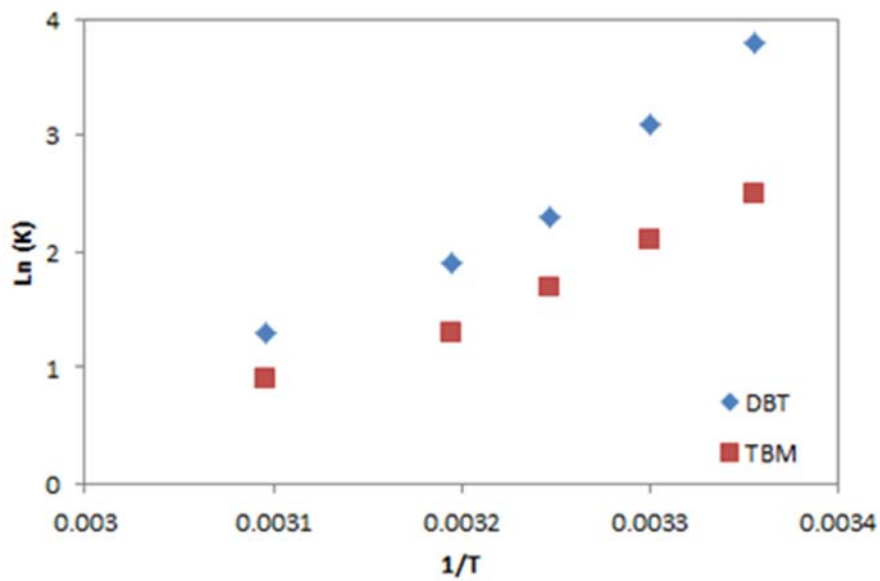


Fig. S3 Calculation of thermodynamic parameters of DBT and TBM adsorption

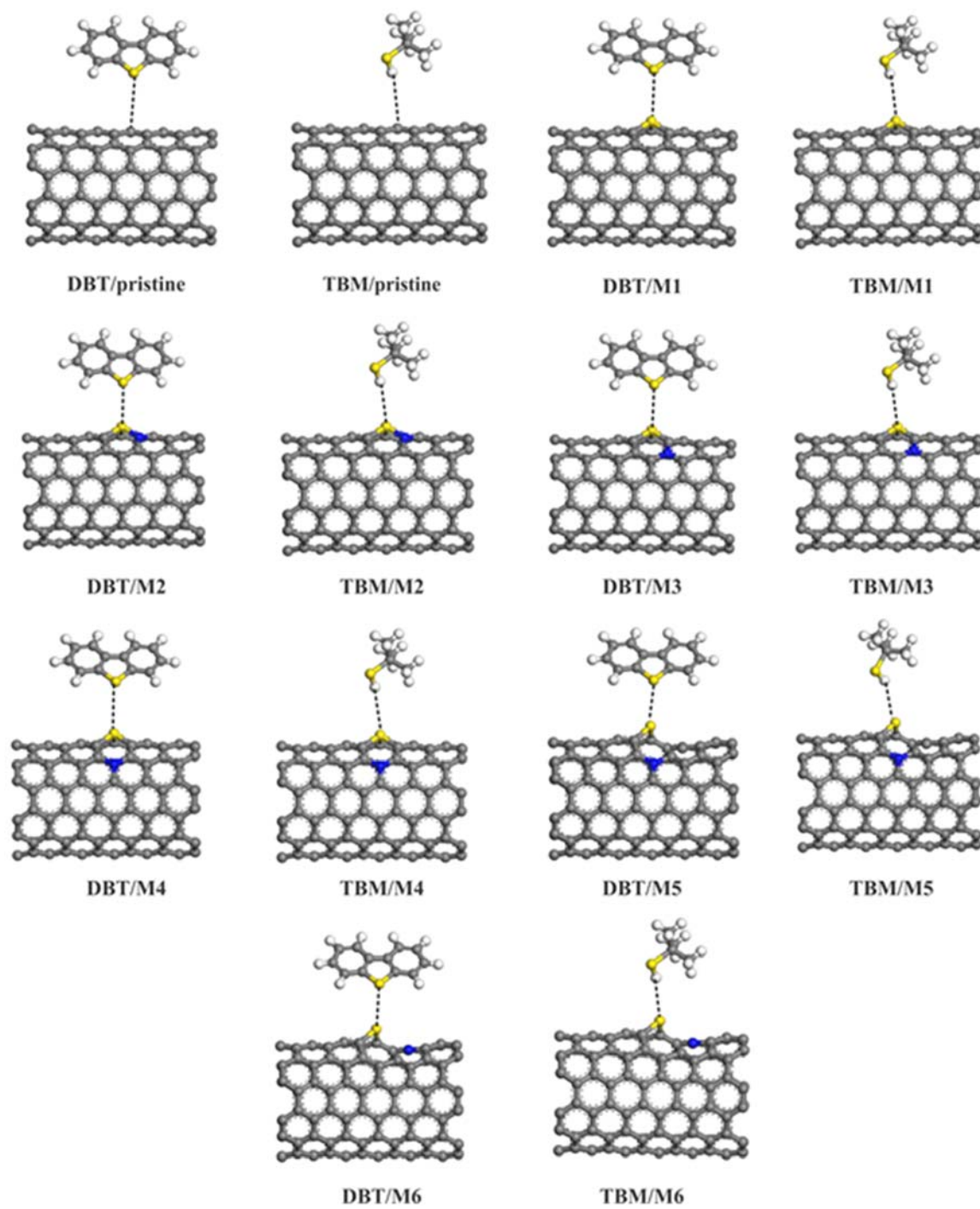


Fig. S4 Optimized configurations of DBT and TBM adsorbed on NS-CNTs