

Supplementary material

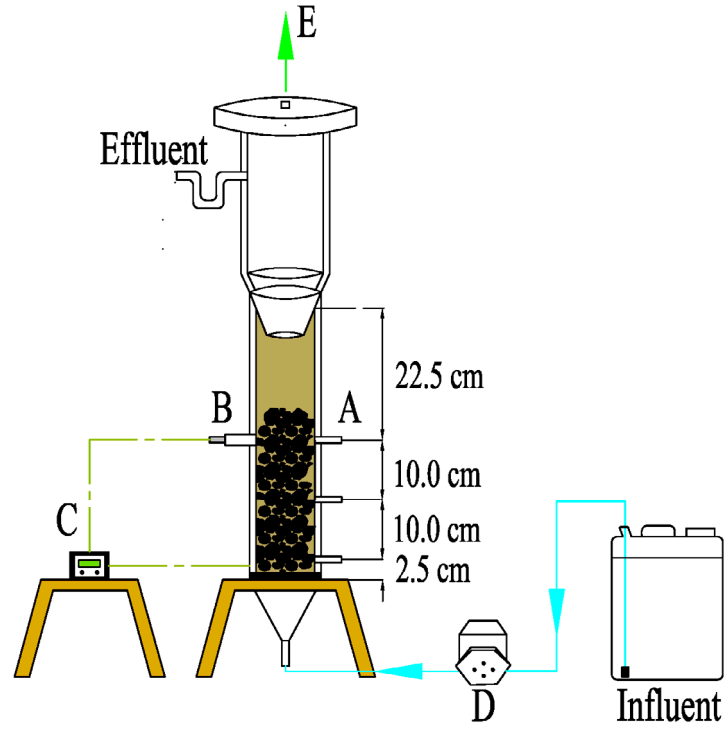


Fig. S1 Schematic diagram of the UASB reactor. (A) sampling port; (B) temperature sensing probe; (C) temperature control device; (D) pump; (E) biogas collecting port

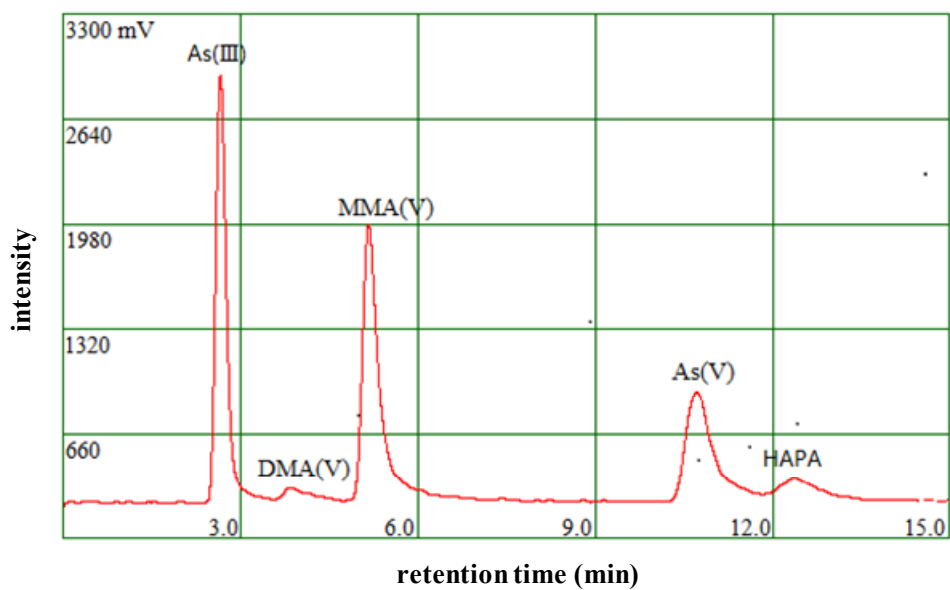


Fig. S2 Arsenic species detected in the reactor of R1 by HPLC-HG-AFS with anion-exchange column

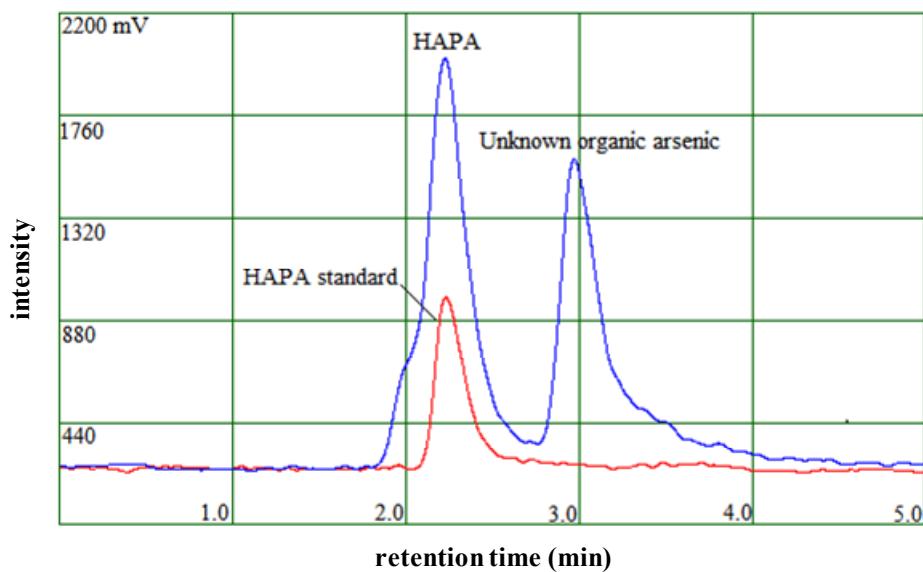


Fig. S3 Arsenical compounds detected in the reactor of R1 by HPLC-UV-HG-AFS with C18 column