

## Supplementary Material

### **Identify the contribution of vehicle non-exhaust emissions: a single particle aerosol mass spectrometer test case at typical road environment**

Qijun Zhang<sup>1</sup>, Jiayuan Liu<sup>1</sup>, Ning Wei<sup>1</sup>, Congbo Song<sup>2</sup>, Jianfei Peng<sup>1</sup>, Lin Wu<sup>1\*</sup>, Hongjun Mao<sup>1\*</sup>

*(1 Tianjin Key Laboratory of Urban Transport Emission Research & State Environmental Protection Key Laboratory of Urban Ambient Air Particulate Matter Pollution Prevention and Control, College of Environmental Science and Engineering, Nankai University, Tianjin 300071, China. 2 School of Geography Earth and Environment Sciences, University of Birmingham, Birmingham B15 2TT, UK)*

**\* Corresponding author, e-mail address:** hongjunm@nankai.edu.cn

**Present address:** 1st Floor, Nankai University Press, No. 94 Weijin Road, Nankai District, Tianjin, 300071, China

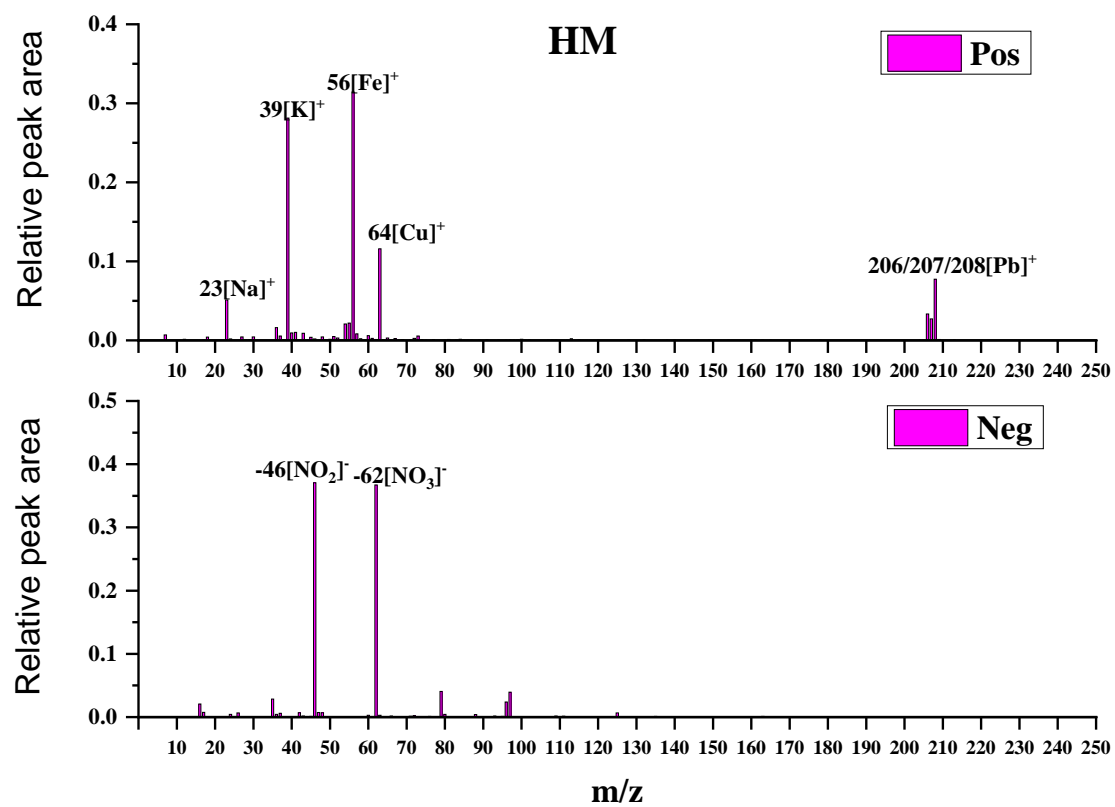


Figure S1 Average spectrum of HM

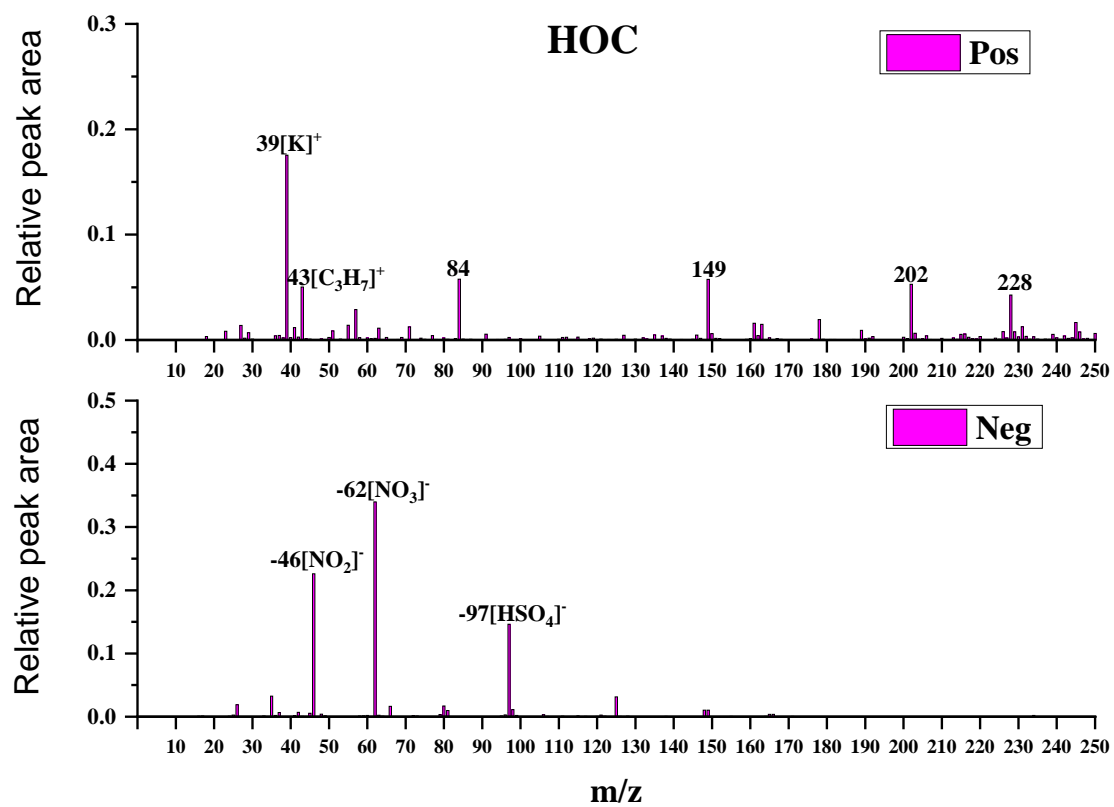


Figure S2 Average spectrum of HOC

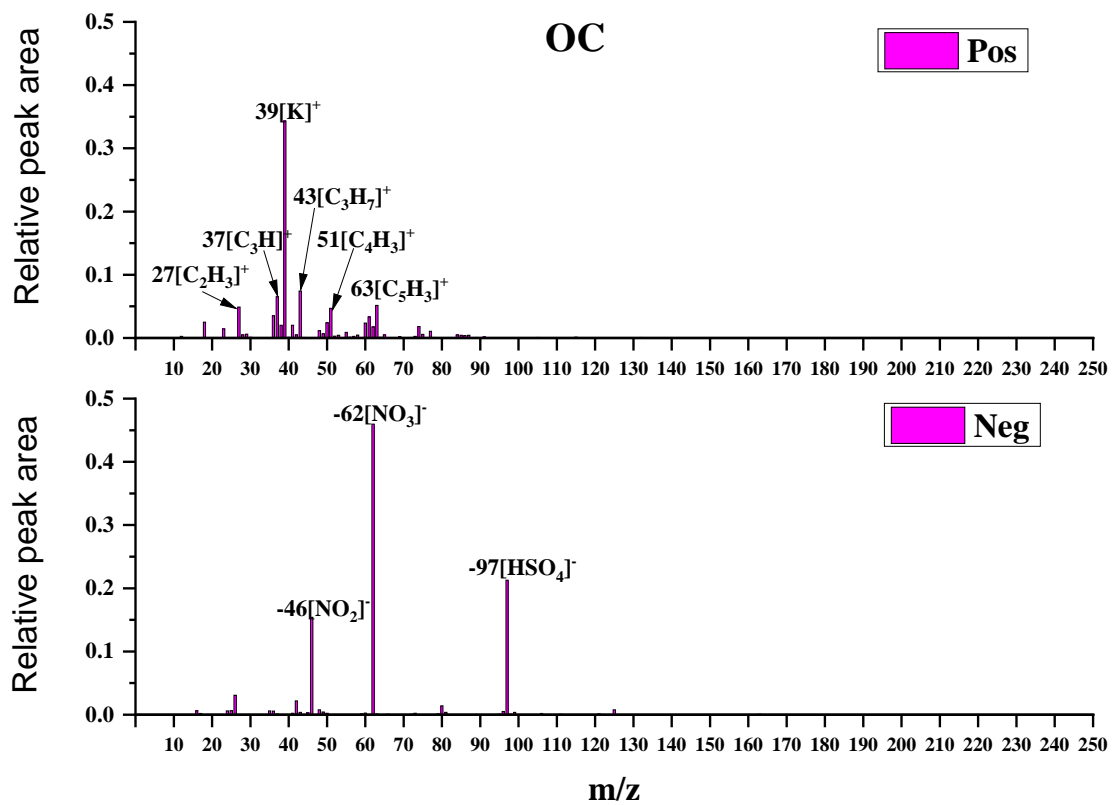


Figure S3 Average spectrum of OC

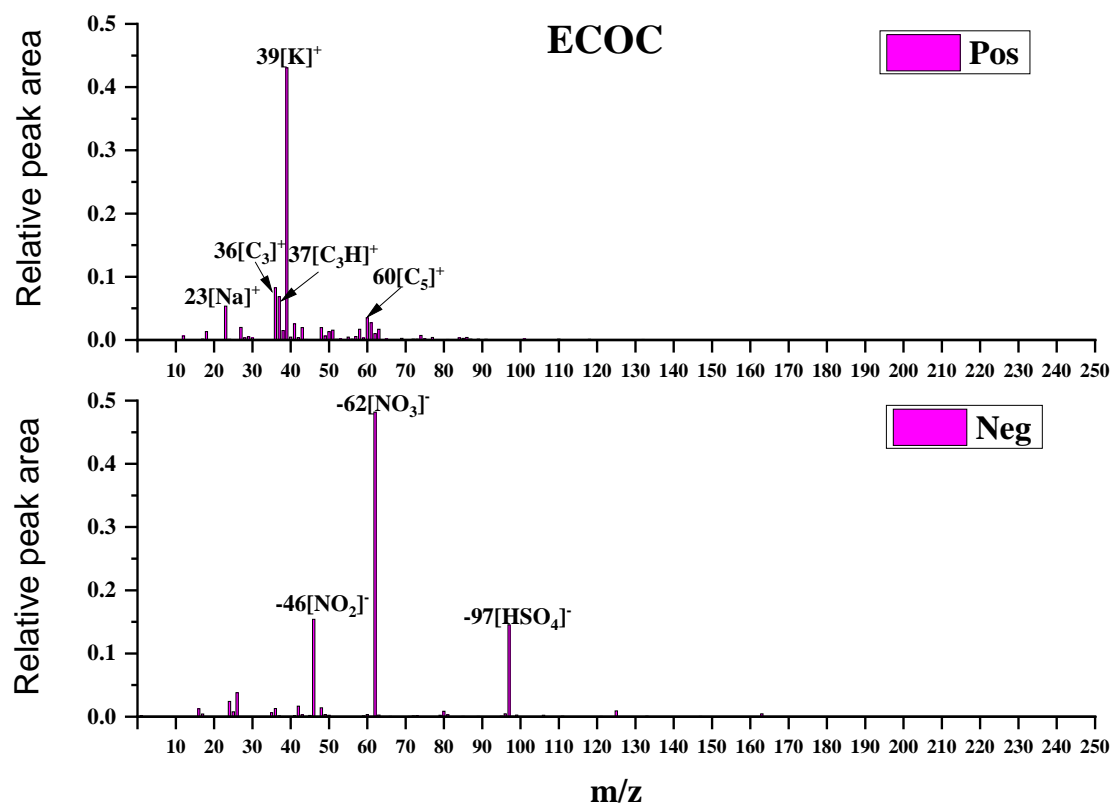


Figure S4 Average spectrum of ECOC

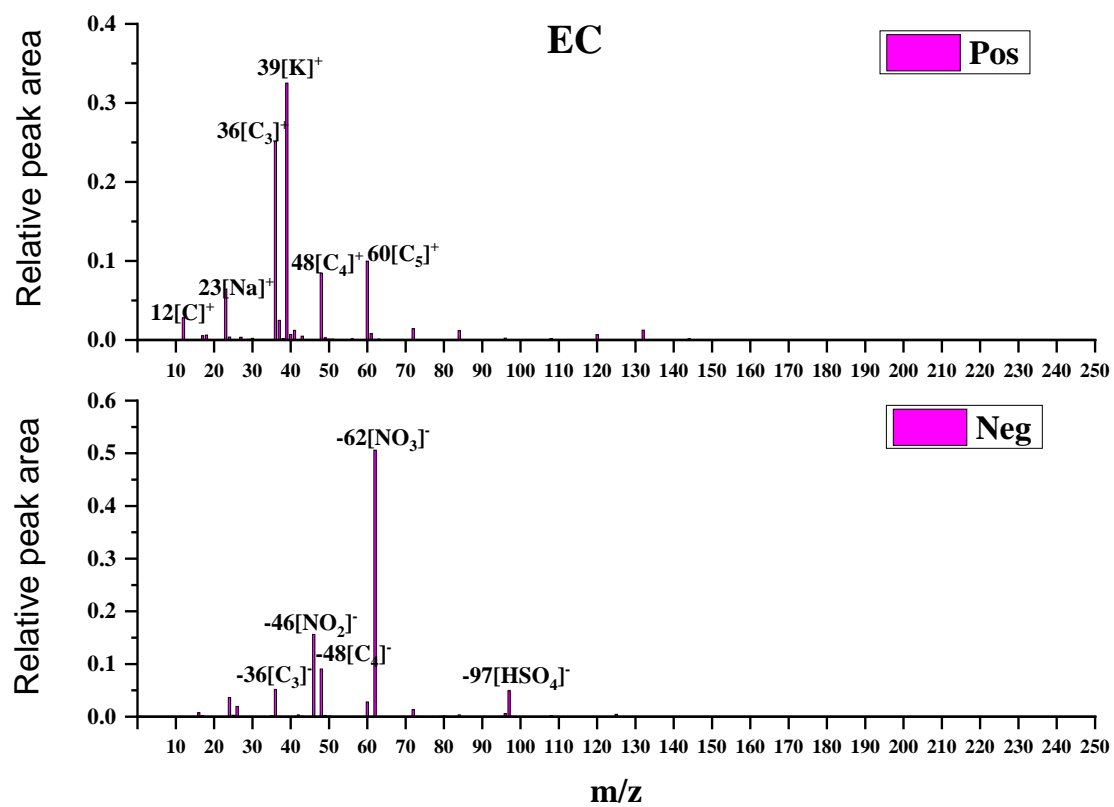


Figure S5 Average spectrum of EC

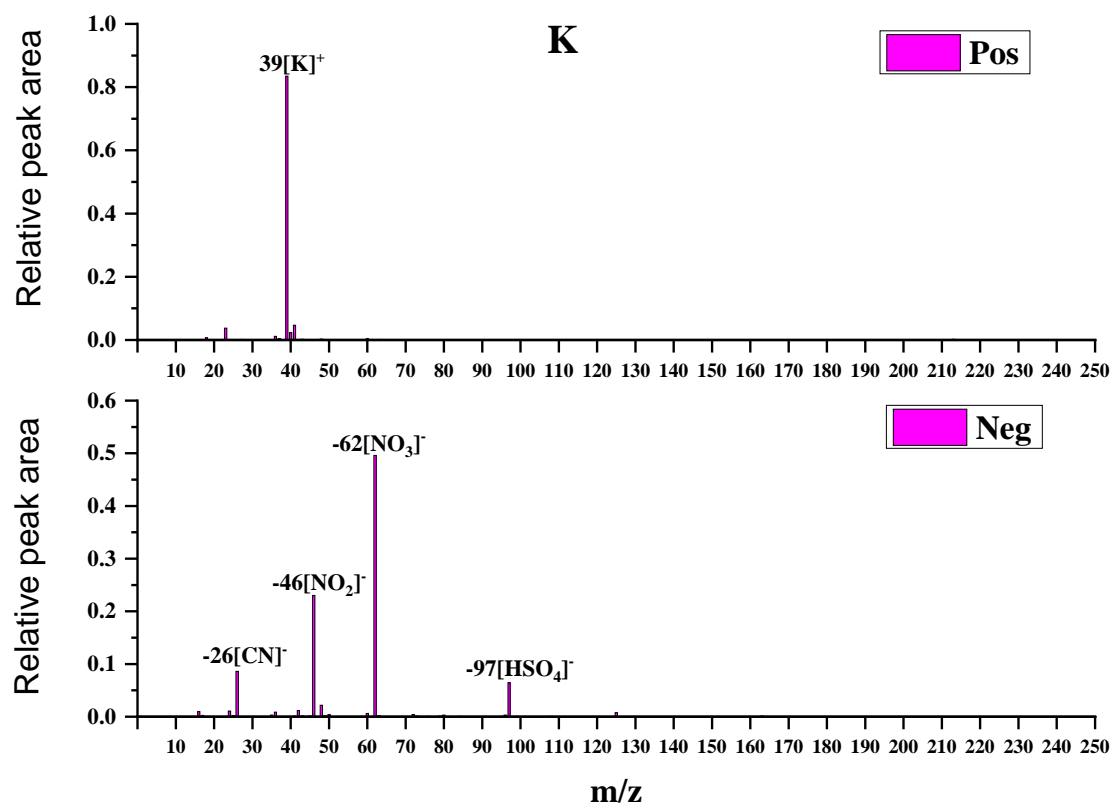


Figure S6 Average spectrum of K

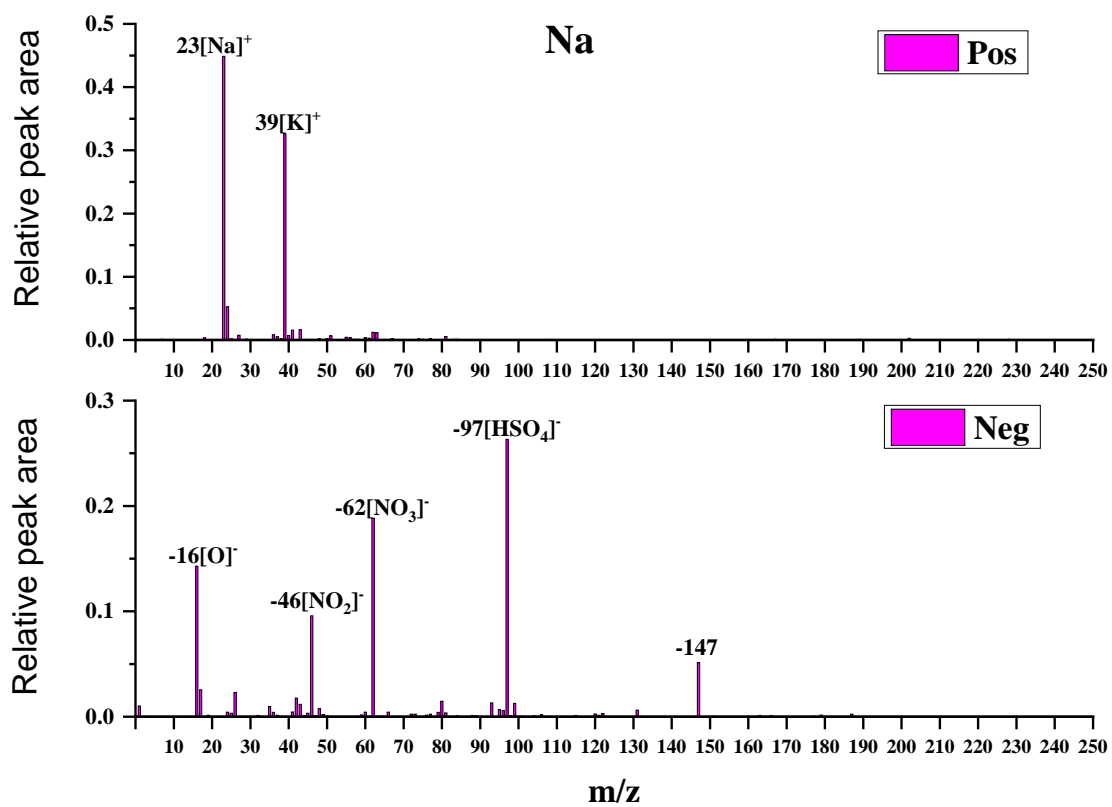


Figure S7 Average spectrum of Na

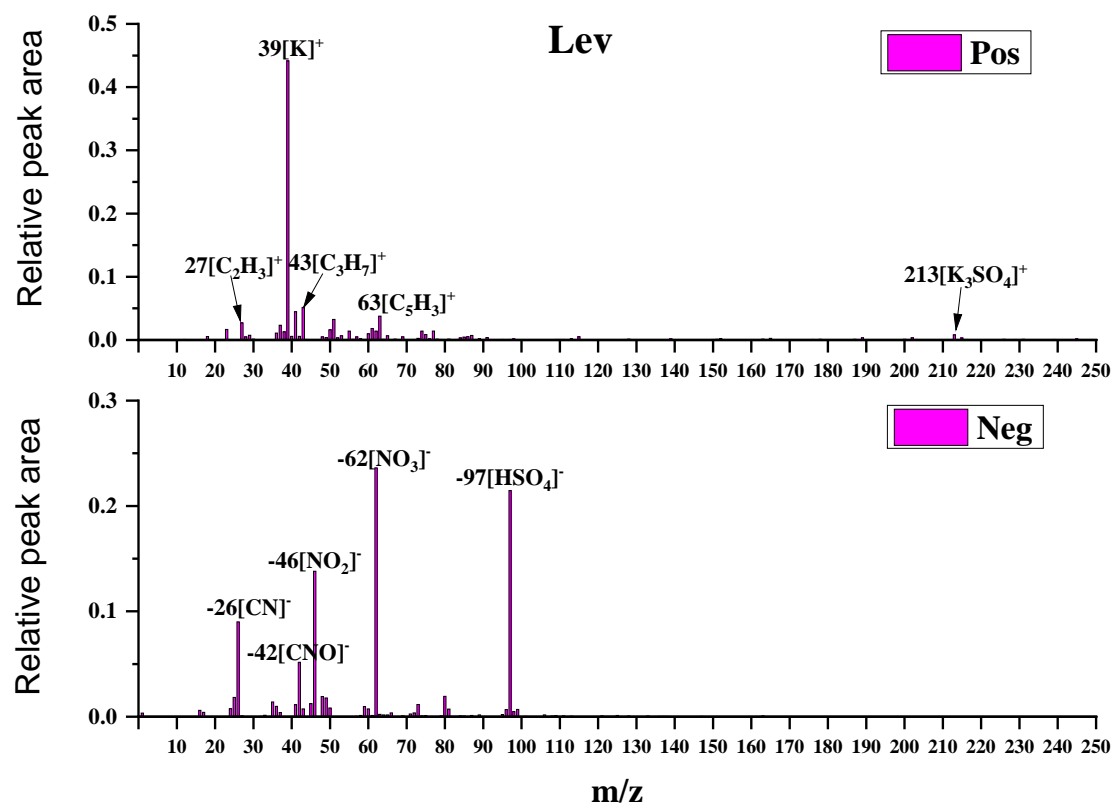


Figure S8 Average spectrum of Lev

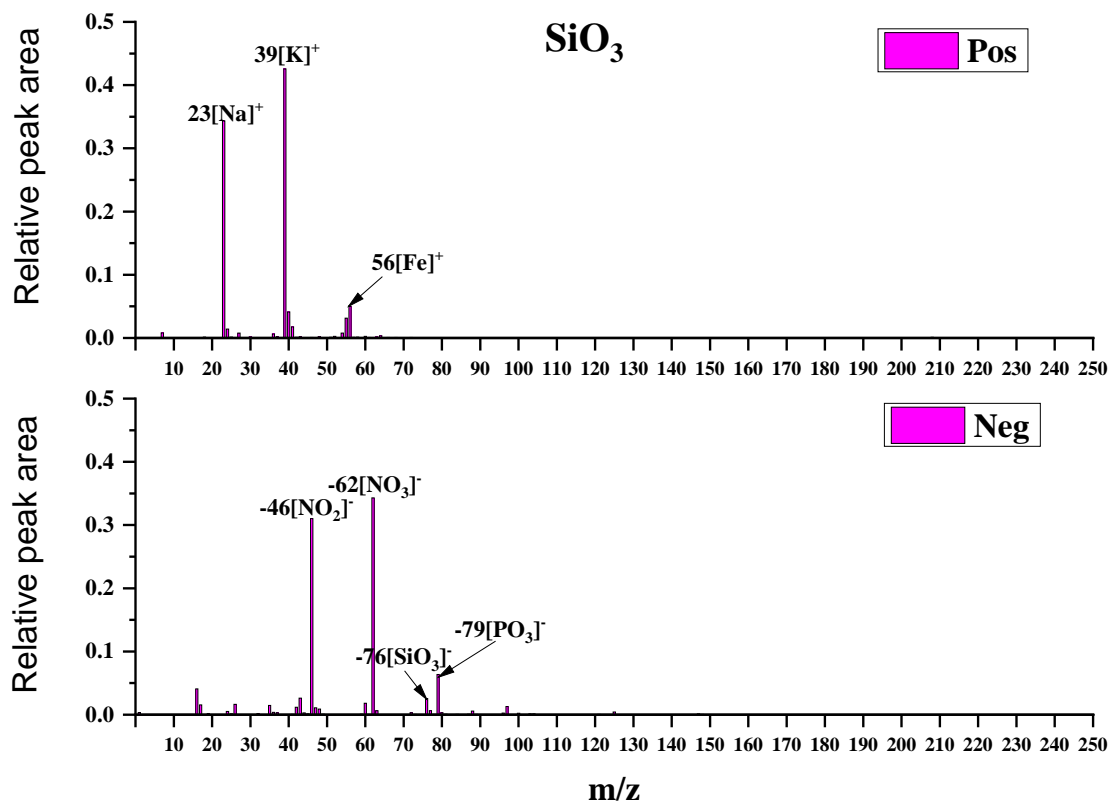


Figure S9 Average spectrum of SiO<sub>3</sub>

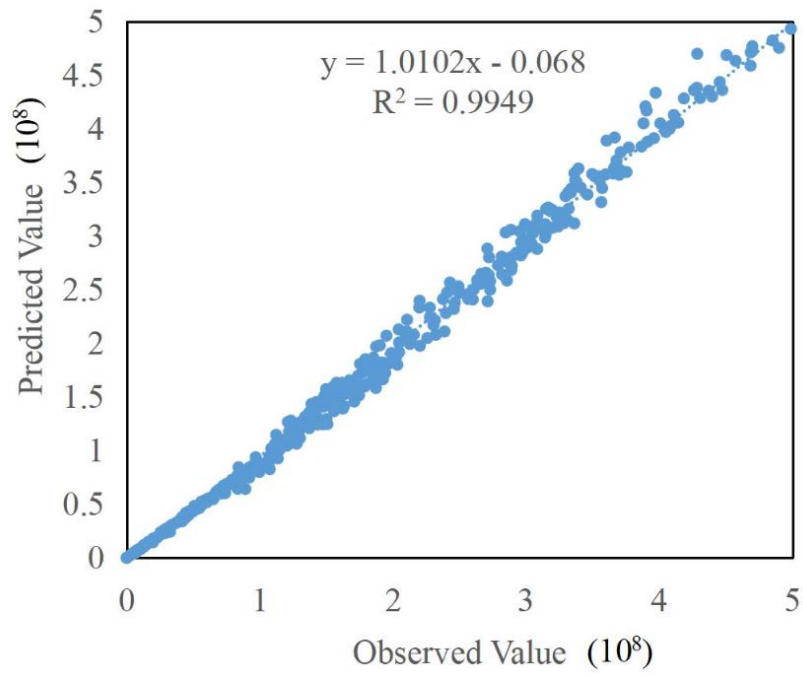


Figure S10 Correlation between observed and predicted value

Table S1 The Q values corresponding to different numbers of factors

Factor number	Q(true)/Qexp	$\Delta Q(\text{true})/Q_{\text{exp}}$
5	10.755	
6	9.588	1.167
7	8.688	0.900
8	8.027	0.661
9	7.070	0.957