

Supporting Information (SI-Table 1 and SI-Table 2)

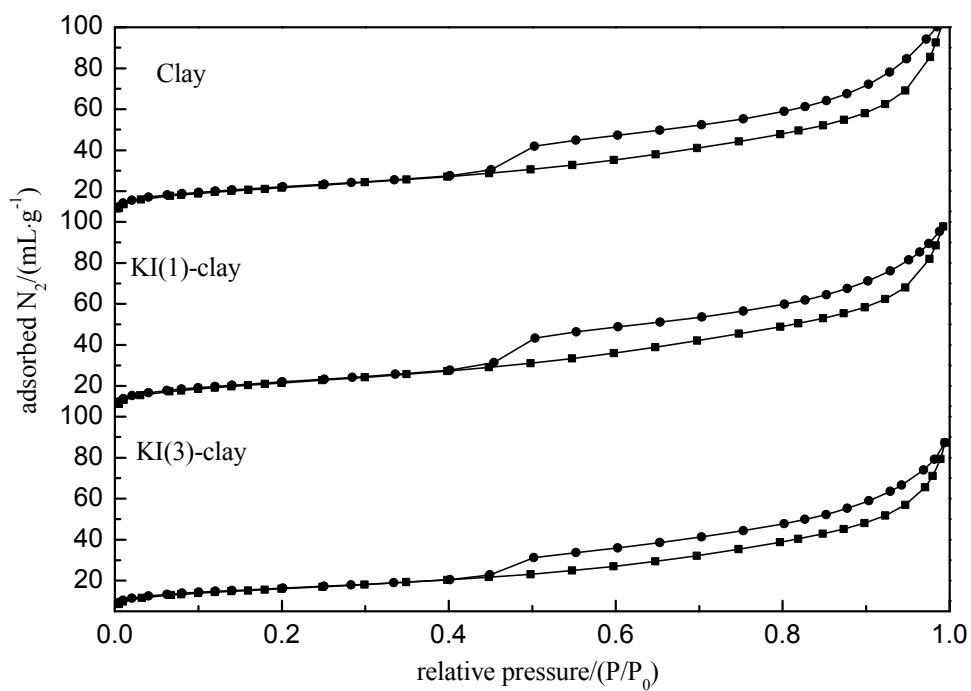


Fig. S1 N₂ isothermal adsorption/desorption of the materials

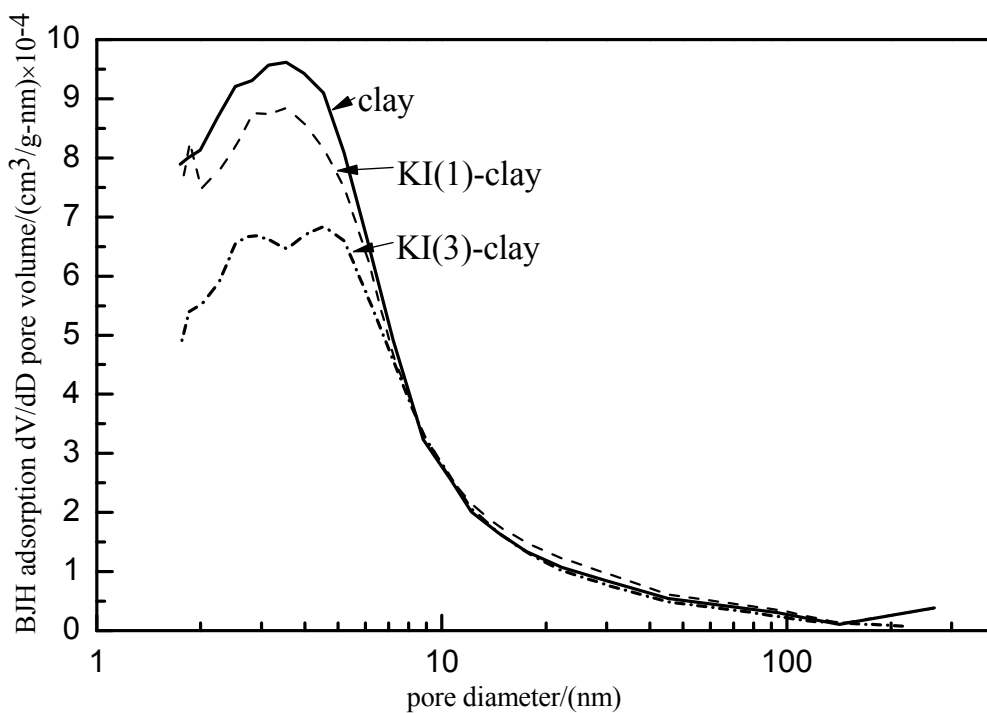


Fig. S2 Pore size distribution of the sorbents

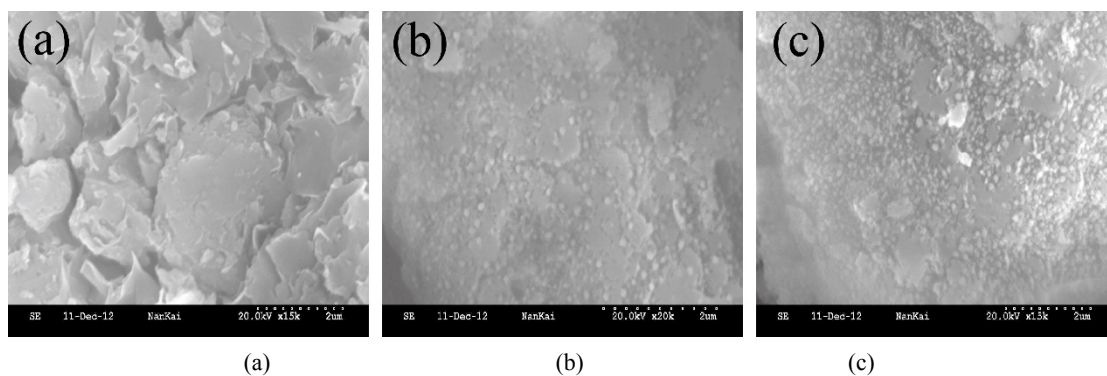


Fig. S3 Scanning electron micrographs of (a) Clay, (b) KI(1)-clay and (c) KI(3)-clay

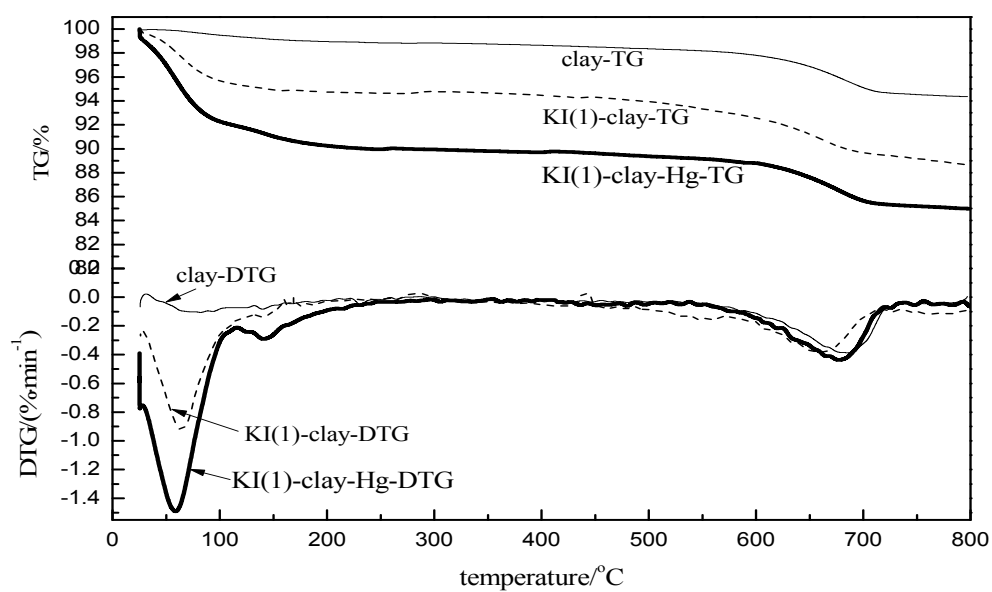


Fig. S4 TG analysis of the materials

Table S1 Elemental composition of clay

element	O	Si	Al	Ca	Mg	Fe
wt.%	62.05	28.02	5.86	2.32	1.46	0.15

Table S2 Physical properties of some Hg and iodine compounds

	melting point/°C	boiling point/°C	decomposition/°C
KI	681	1330	-
I ₂	113 (sublimes at 45 °C)	184	-
Hg	2.2 (sublimes at 45 °C)	357	-
HgI ₂	259	354 (sublimes)	-
HgI	140 (sublimes at 40 °C)	-	290
HgO	-	-	500
KHgI ₃	-	-	100
K ₂ HgI ₄	-	-	100