

Supplementary Material

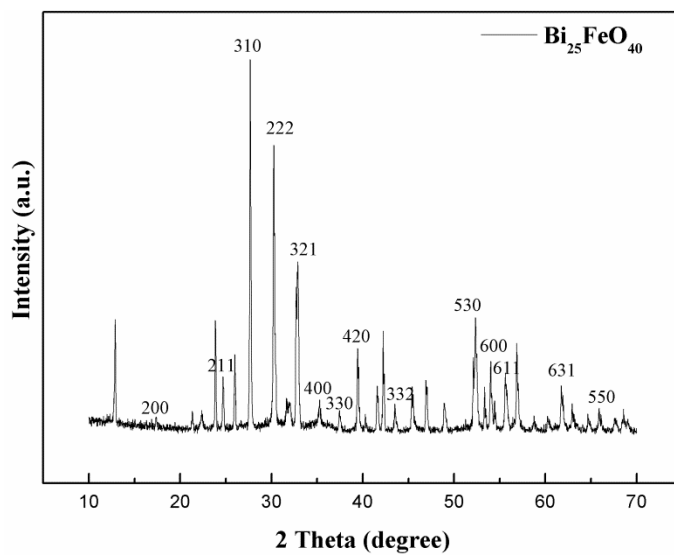


Fig. S1 XRD pattern of $\text{Bi}_{25}\text{FeO}_{40}$

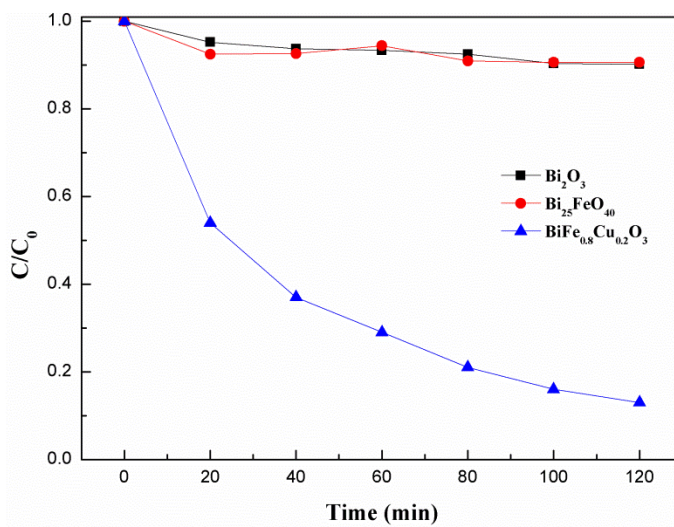


Fig. S2 Phenol removal on Bi_2O_3 and $\text{Bi}_{25}\text{FeO}_{40}$ ([phenol] = $10 \text{ mg}\cdot\text{L}^{-1}$, initial pH = 4.0, [catalysts] = $0.5 \text{ g}\cdot\text{L}^{-1}$, $[\text{H}_2\text{O}_2]$ = 15 mM)