

Supplementary Material for
Projections of heat-related excess mortality in China due to
climate change, population and aging

Table of Contents

1. Supplementary Information Figures.....	2
2. Supplementary Information Tables.....	7



1. Supplementary Information Figures

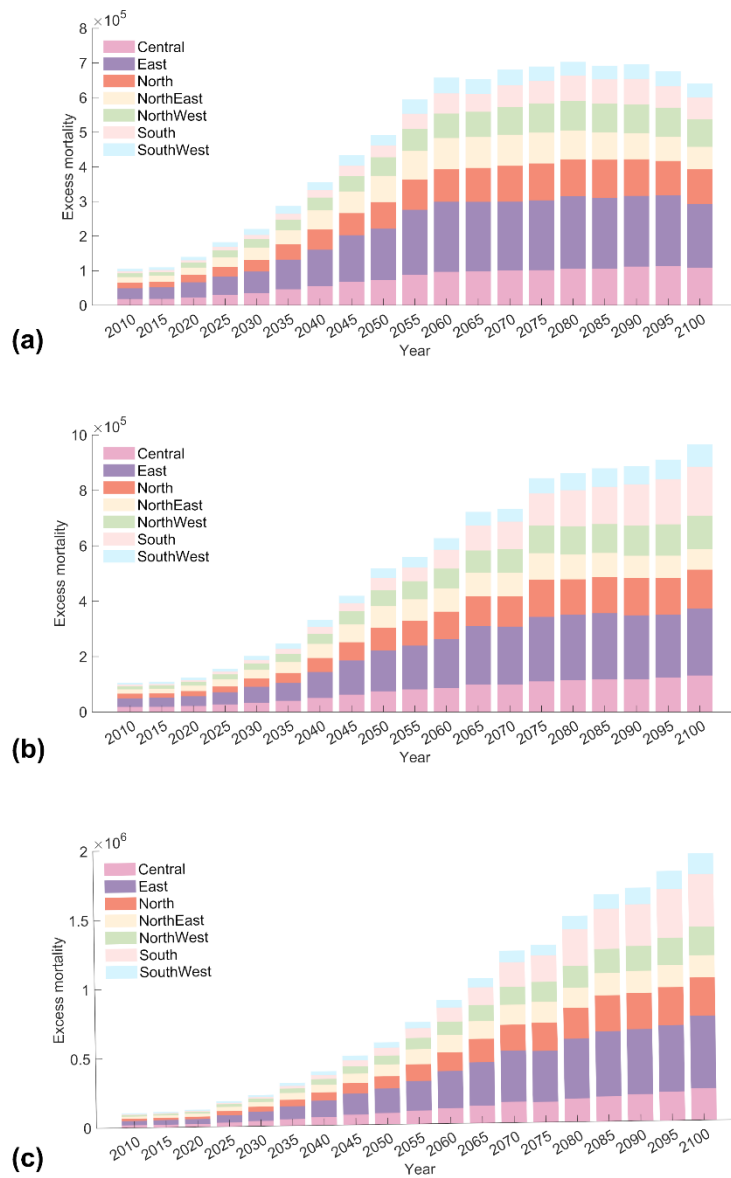
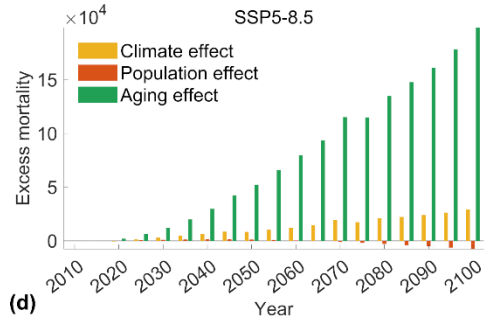
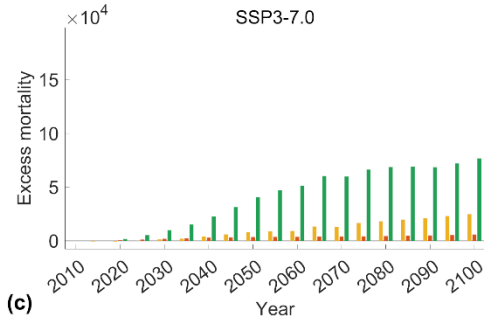
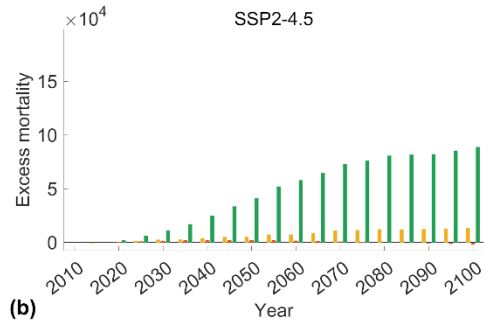
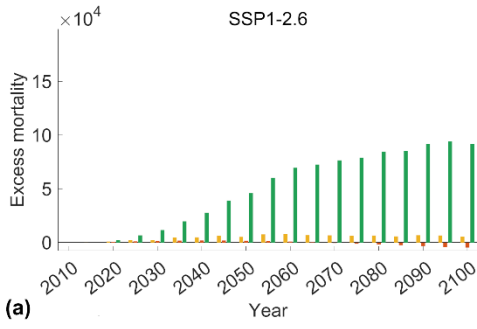
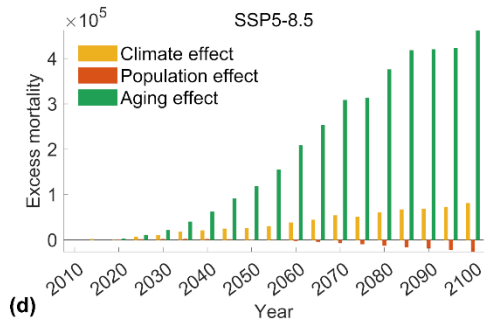
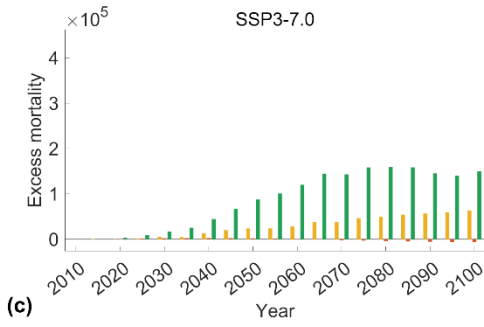
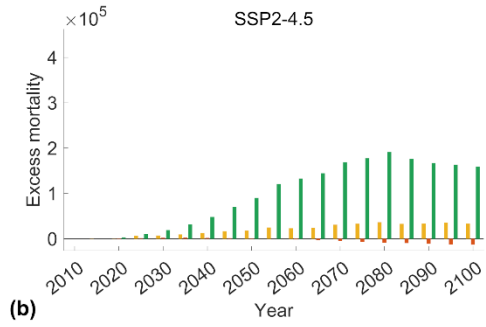
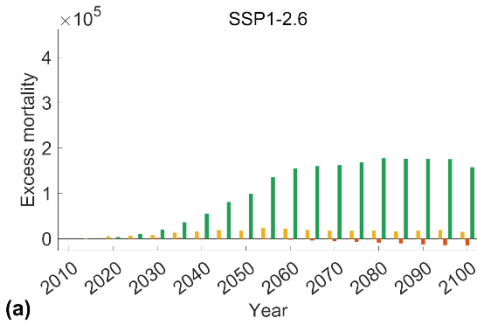


Fig. S1 Annual heat-related excess mortality in different geographical regions under different scenarios considering population aging. (a) Under the SSP1-2.6 scenario; (b) Under the SSP3-7.0 scenarios; (c) Under the SSP5-8.5 scenarios.

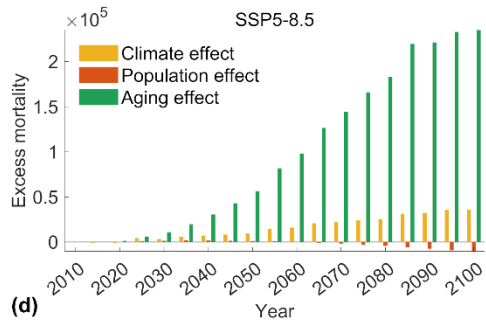
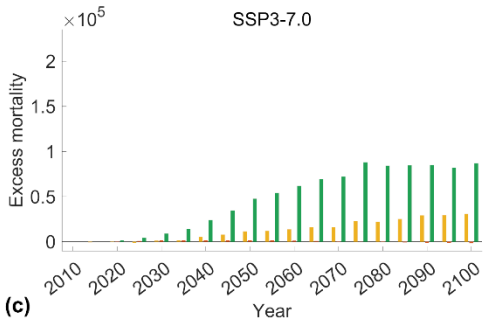
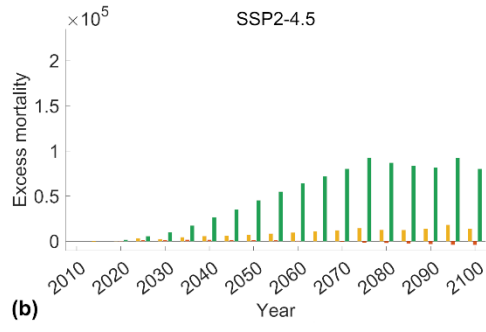
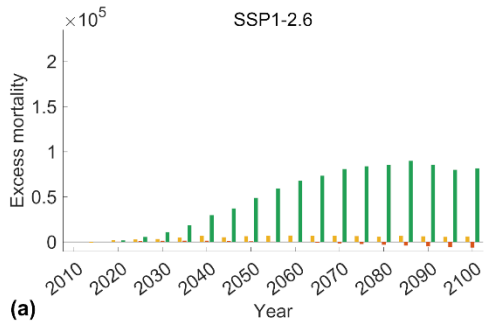
Central



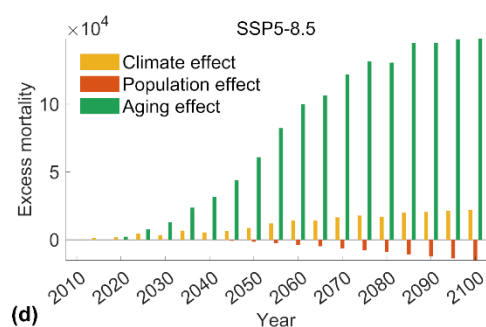
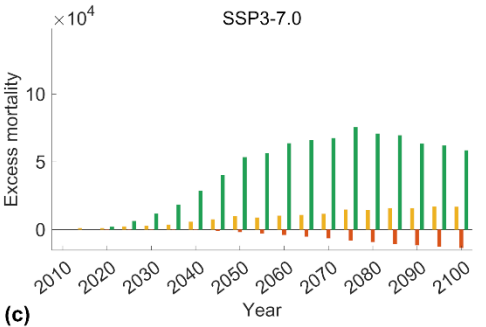
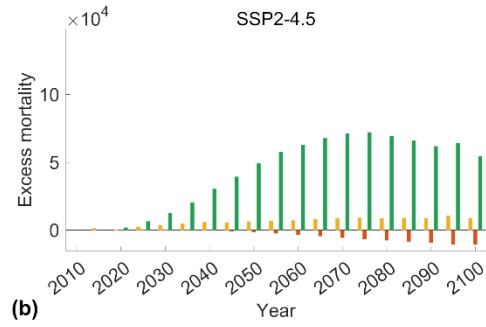
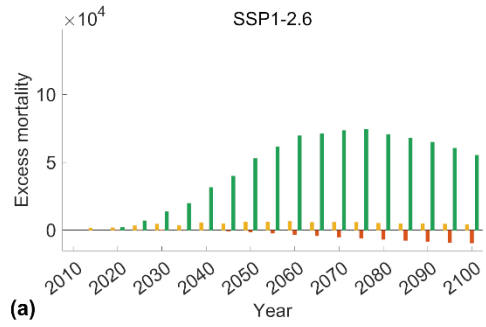
East



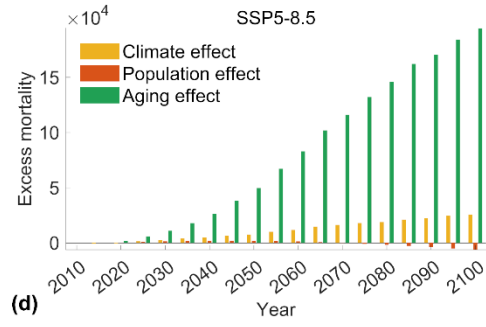
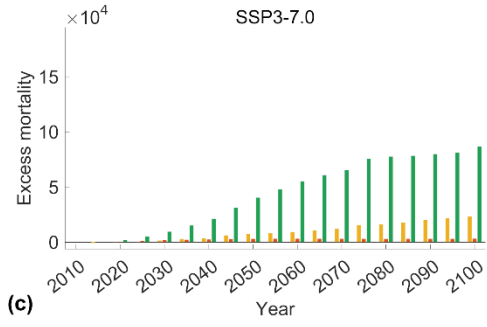
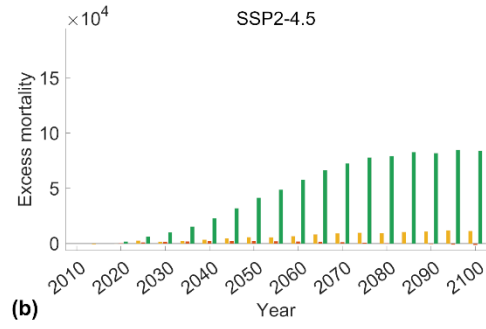
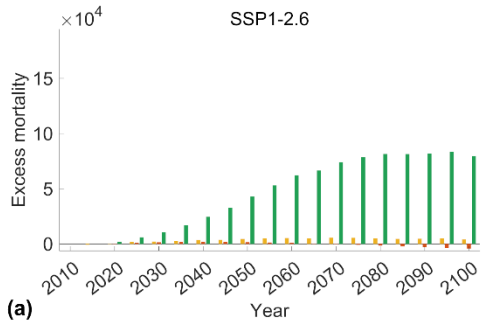
North



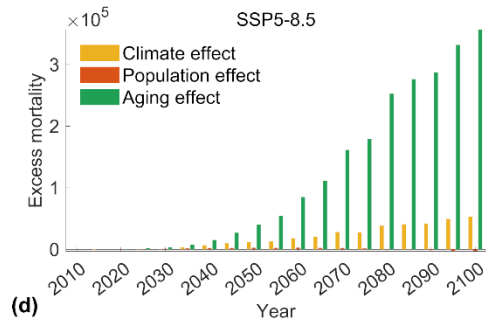
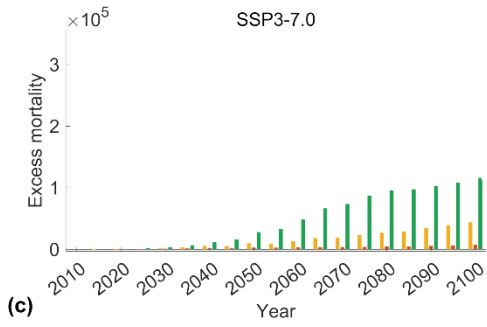
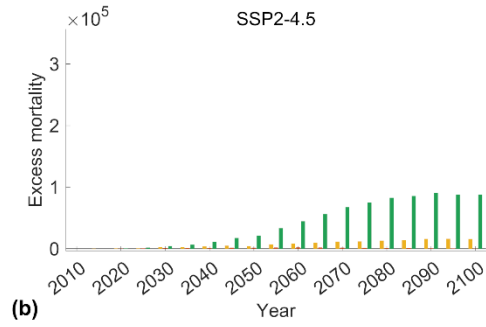
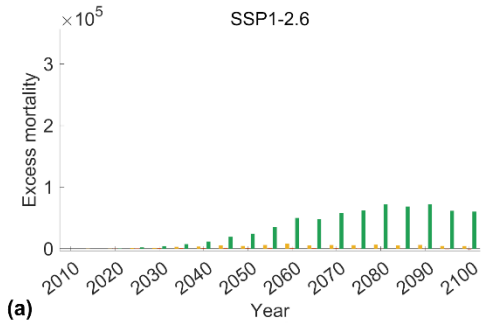
Northeast



Northwest



South



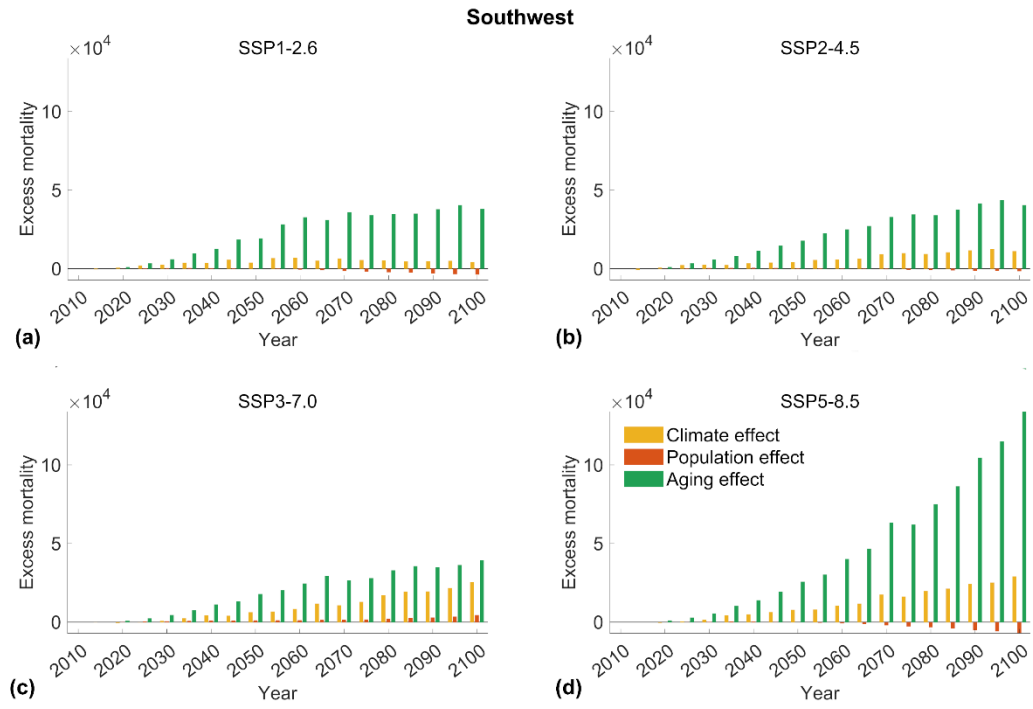


Fig. S2 Decomposition of projected change in heat-related excess mortality due to climate change, population change and aging from 2010 to 2100 under four scenarios in different geographic region.

2. Supplementary Information Tables

Table S1. Ranking of the number of heat-related mortality in each area in 2010 and 2081-2100

Area	2010				2081-2100			
	SSP1-2.6	SSP2-4.5	SSP3-7.0	SSP5-8.5	SSP1-2.6	SSP2-4.5	SSP3-7.0	SSP5-8.5
Beijing	27	27	27	27	27	28	28	27
Tianjin	24	24	24	24	20	25	27	24
Hebei	3	3	1	1	3	2	2	2
Shanxi	12	12	12	12	14	14	13	12
Inner Mongolia	23	23	23	23	24	24	23	25
Liaoning	1	1	2	2	4	6	7	6
Jilin	13	13	13	13	17	20	21	23
Heilongjiang	16	16	16	16	21	21	20	22
Shanghai	25	25	25	25	22	23	25	18
Jiangsu	5	5	5	5	5	5	5	5
Zhejiang	10	10	10	10	7	8	10	7
Anhui	2	2	3	3	2	3	3	4
Fujian	28	28	28	28	28	27	24	20
Jiangxi	11	11	11	11	12	13	14	15
Shandong	4	4	4	4	1	1	4	3
Henan	6	6	6	6	6	7	8	10
Hubei	9	9	9	9	13	15	16	17
Hunan	7	7	7	7	11	11	12	13
Guangdong	18	18	18	18	8	4	1	1
Guangxi	19	19	19	19	16	12	6	8
Hainan	22	22	22	22	19	18	18	21
Chongqing	14	14	14	14	15	16	17	14
Sichuan	17	17	17	17	18	17	19	19
Guizhou	21	21	21	21	25	19	15	16
Yunnan	29	29	29	29	29	29	29	29
Tibet	31	31	31	31	31	31	31	31
Shaanxi	8	8	8	8	9	9	11	9
Gansu	20	20	20	20	23	22	22	26
Qinghai	30	30	30	30	30	30	30	30
Ningxia	26	26	26	26	26	26	26	28
Xinjiang	15	15	15	15	10	10	9	11

Table S2. Ranking of the rate of heat-related mortality in each area in 2010 and 2081-2100

Area	2010				2081-2100			
	SSP1-2.6	SSP2-4.5	SSP3-7.0	SSP5-8.5	SSP1-2.6	SSP2-4.5	SSP3-7.0	SSP5-8.5
Beijing	28	28	28	28	21	20	16	18
Tianjin	12	12	12	12	7	8	5	8
Hebei	8	8	8	8	12	15	14	14
Shanxi	11	11	11	11	13	13	12	13
Inner								
Mongolia	21	21	21	21	18	18	17	19
Liaoning	1	1	1	1	1	1	1	1
Jilin	10	10	10	10	5	4	2	4
Heilongjiang	25	25	25	25	16	12	8	15
Shanghai	22	22	22	22	8	6	4	3
Jiangsu	9	9	9	9	10	11	11	10
Zhejiang	16	16	16	16	11	9	10	9
Anhui	5	5	5	5	9	10	18	11
Fujian	30	30	30	30	27	24	21	21
Jiangxi	14	14	14	14	19	21	22	24
Shandong	13	13	13	13	14	14	19	16
Henan	20	20	20	20	24	25	27	28
Hubei	18	18	18	18	22	23	25	26
Hunan	15	15	15	15	20	22	23	25
Guangdong	27	27	27	27	23	19	13	12
Guangxi	26	26	26	26	29	27	24	22
Hainan	4	4	4	4	6	5	6	5
Chongqing	17	17	17	17	17	17	20	17
Sichuan	23	23	23	23	25	28	28	27
Guizhou	24	24	24	24	26	26	26	23
Yunnan	29	29	29	29	30	30	30	30
Tibet	31	31	31	31	31	31	31	31
Shaanxi	3	3	3	3	2	2	3	2
Gansu	6	6	6	6	4	7	9	7
Qinghai	19	19	19	19	28	29	29	29
Ningxia	2	2	2	2	3	3	7	6
Xinjiang	7	7	7	7	15	16	15	20