

Supplementary

Socioeconomic drivers of the human microbiome footprint in global sewage

Minglei Ren^{1,2^}, Shaojuan Du^{3^}, Jianjun Wang^{1,2#}

¹Key Laboratory of Lake and Watershed Science for Water Security, Nanjing Institute of Geography and Limnology, Chinese Academy of Sciences, Nanjing 210008, China.

²State Key Laboratory of Lake Science and Environment, Nanjing Institute of Geography and Limnology, Chinese Academy of Sciences, Nanjing 210008, China

³Nanjing Institute of Environmental Sciences, Ministry of Ecology and Environment, Nanjing 210042, China

[^] These authors contributed equally to this work

[#] Correspondence: jjwang@niglas.ac.cn

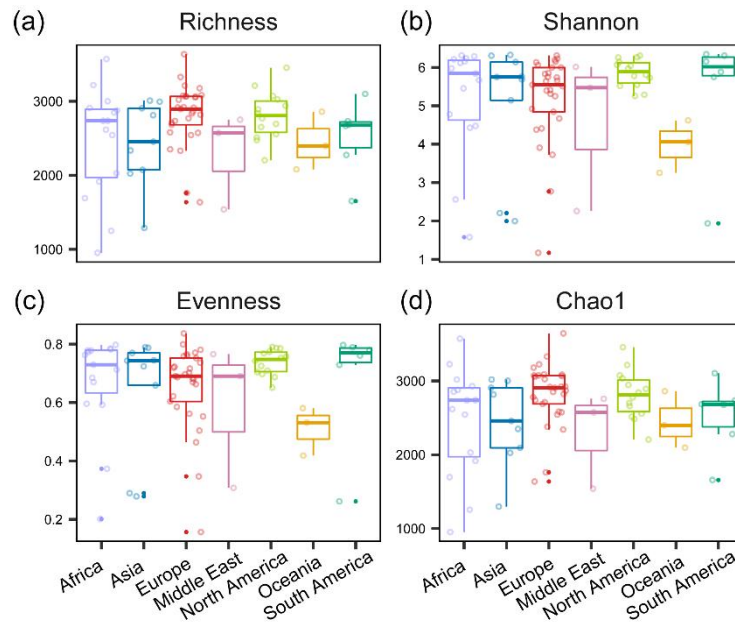


Figure S2. Alpha diversity of the HMS across global continents. The indices of the alpha diversity include species richness (a), Shannon diversity (b), Pielou's evenness (c) and the Chao1 (d).

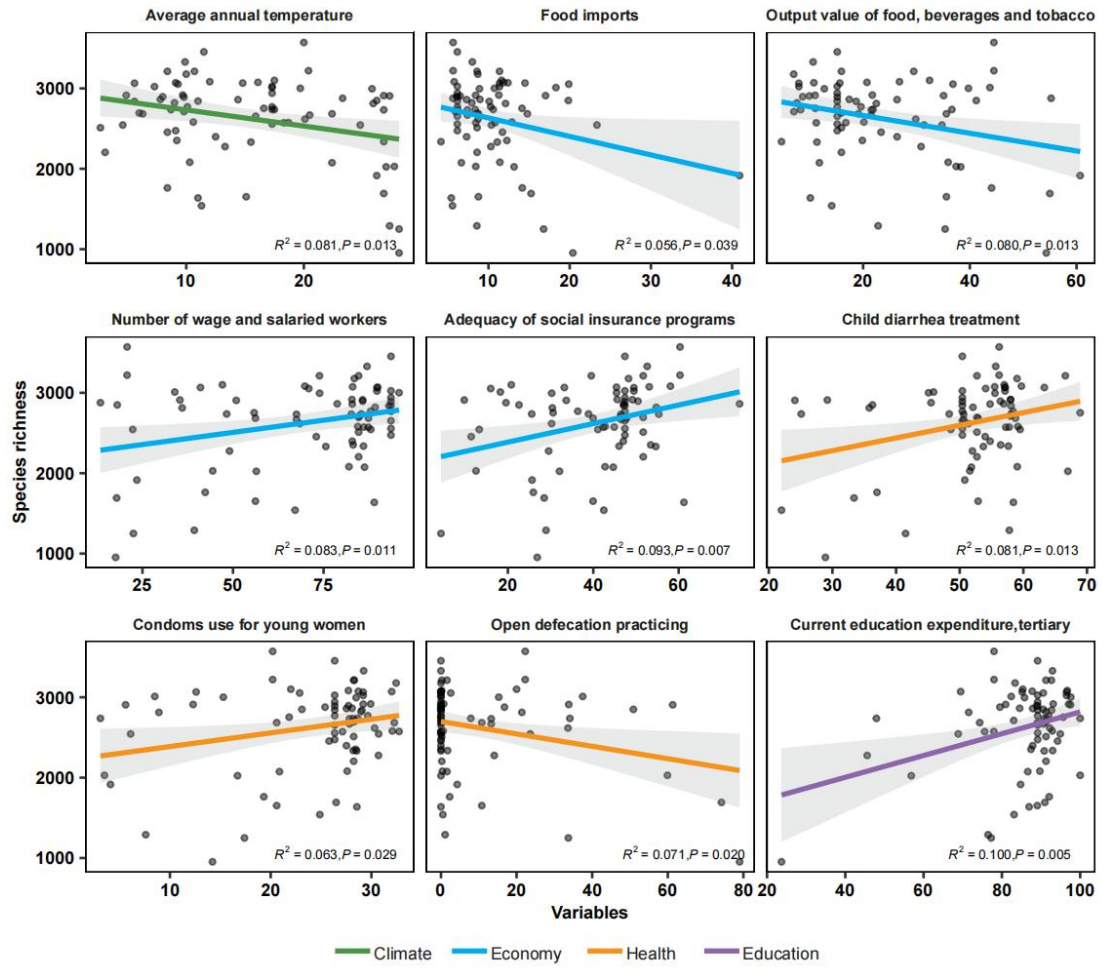


Figure S3. The relationship between species richness of HMS and the selected variables was examined by the linear model regression. Only the variables that are significantly related to species richness were shown here. The color of regression lines denotes the types of variables.

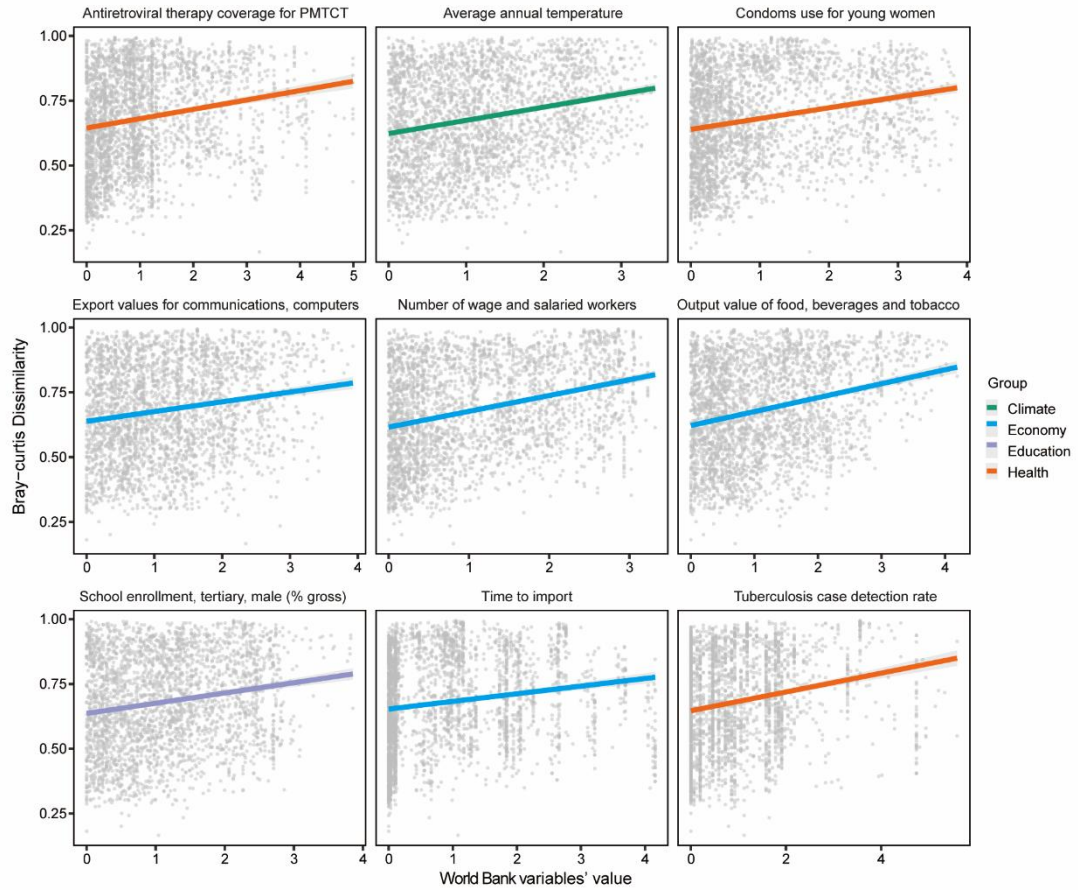


Figure S4. Mantel test showing Spearman's correlations between HMS community dissimilarity and the selected variables. Only the variables that are significantly related to community dissimilarity were shown here. The color of regression lines denotes the types of variables.