

Supplementary Material

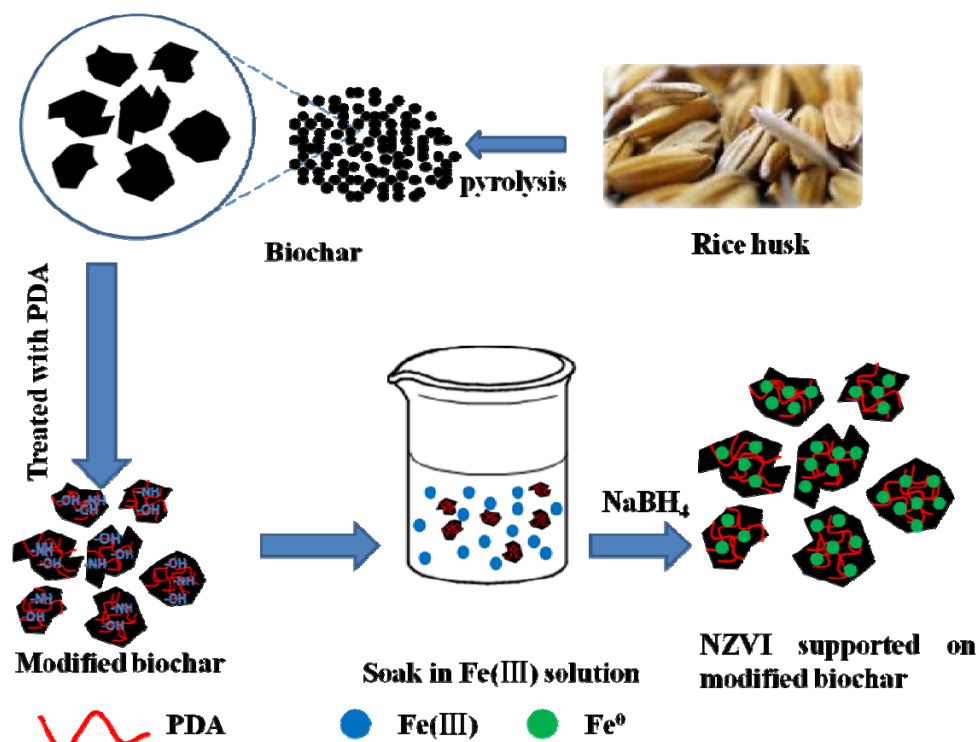


Fig. S1 Diagram of PDA/NZVI@BC preparation

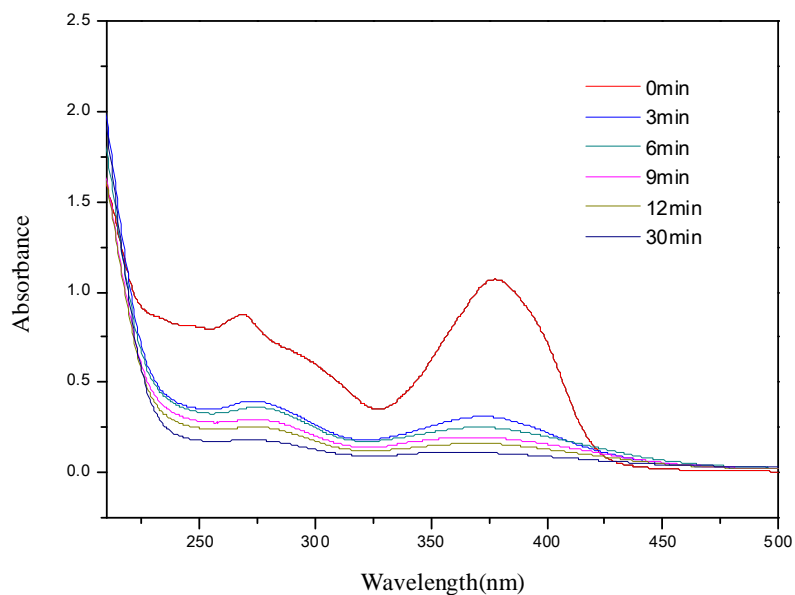


Fig. S2 UV-vis spectra for the degradation of TC at various times ($C_0 = 30$ mg/L; PDA/NZVI@BC dosage = 0.1 g/L; pH = 6.3; T = 298 K)

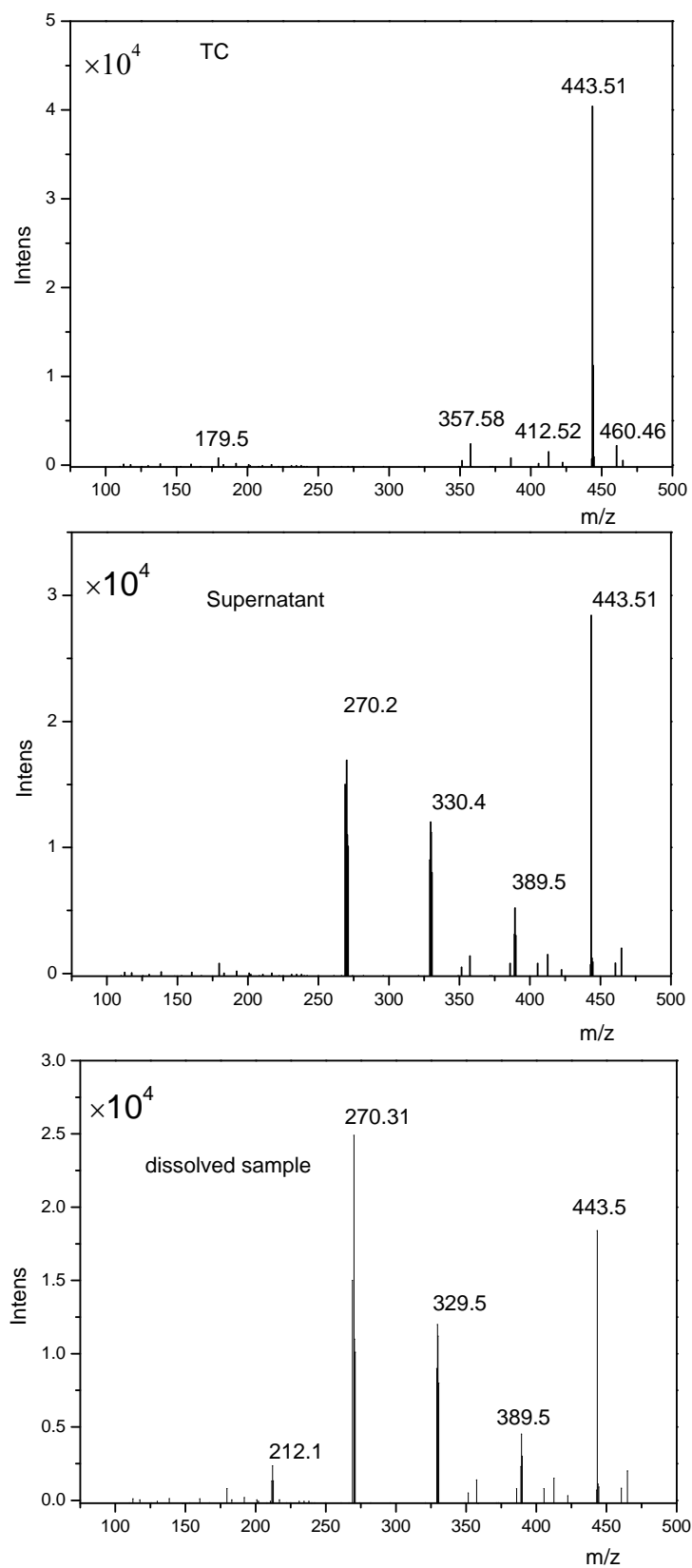
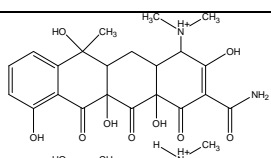
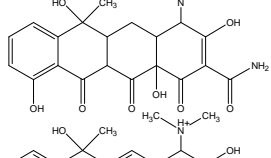
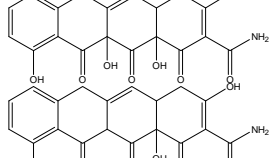


Fig. S3 Mass spectra of TC, supernatant samples and the dissolved sample

Table S1 The N₂-Brunauer-Emmett-Teller specific surface area of different biochars

Material	BC	BC/PDA(8h)	BC/PDA(24h)	PDA(8h)/NZVI@BC
BET surface area (m ² /g)	249.5	69.7	4.8	78.5

Table S2 Degradation products of TC by PDA/NZVI@BC

Compound	m/z	Molecular Weight	Formula	Possible structure
Tetracycline	461.2	461	C ₂₅ H ₂₄ N ₃ O ₈	
Product 1	427.5	427	C ₂₀ H ₂₃ NO ₇	
Product 2	413.5	413	C ₂₀ H ₂₆ N ₂ O ₆	
Product 3	405	405	C ₁₉ H ₂₇ NO ₇	