

Supporting Materials

Phosphorus transformation under the influence of aluminum, organic carbon, and dissolved oxygen at the water-sediment interface: A simulative study

Ouchen Cai,^{1,†} Yuanxiao Xiong,^{1,2,†} Haijun Yang,³ Jinyong Liu,^{1,‡,*} and Hui Wang^{1,*}

¹State Key Joint Laboratory on Environmental Simulation and Pollution Control,
School of Environment, Tsinghua University, Beijing 100084

²Beijing 101 Middle School, Beijing 100091, China

³Department of Chemistry, Tsinghua University, Beijing 100084, China

[†]Co-first authors.

[‡]Current Address: Department of Chemical & Environmental Engineering, University of California, Riverside, California, 92521, United States

*Corresponding authors:

Hui Wang, Email: wanghai@tsinghua.edu.cn;

Jinyong Liu, Email: jinyong.liu101@gmail.com.

Fig. S1 and **Fig. S2**.

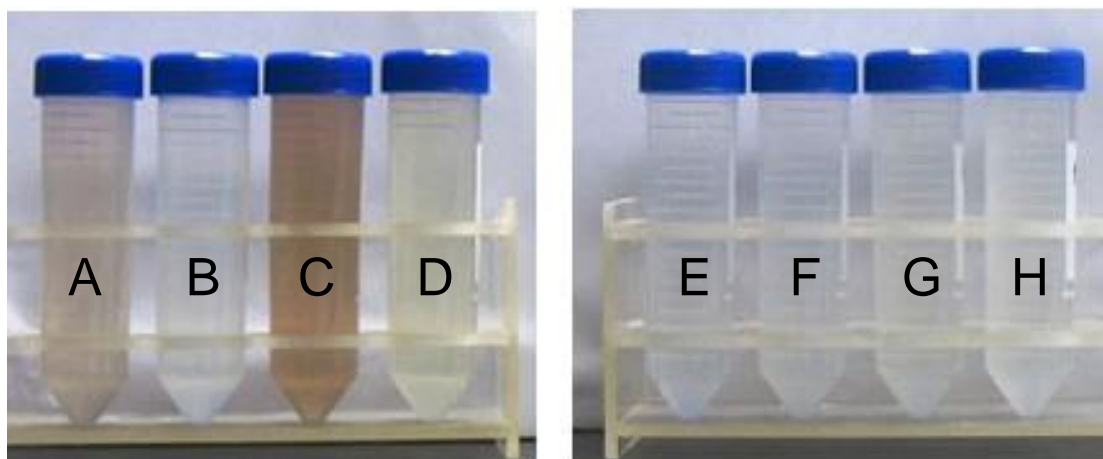


Fig. S1. The appearance of the overlying water of each reactor after 30 days of simulation. Reactors A, B, C, D: oxic; E, F, G, H: anoxic. Reactors A, C, E, G: organic carbon added; Reactors A, B, E, F: Al added.

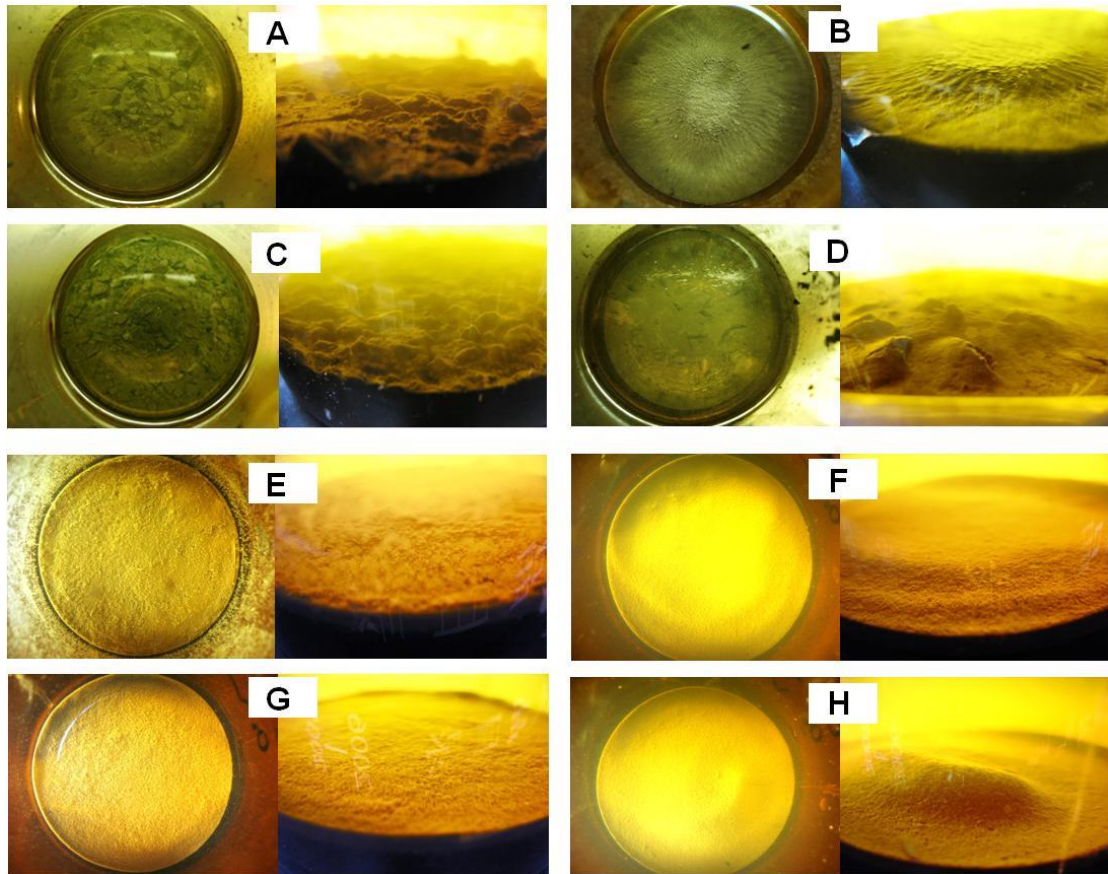


Fig. S2. The appearance of the sediment surface of each reactor after 30 days of simulation. Right-sided photos were taken from the side of glass bottles with overlying water. Left-sided photos were taken from the top when most of the overlying water was removed. Reactors A, B, C, D: oxic; E, F, G, H: anoxic. Reactors A, C, E, G: organic carbon added; Reactors A, B, E, F: Al added.