



Fig. S1 Canadian light source and the Mid Infrared Spectromicroscopy (MID-IR) beamline station.



Fig. S2 Very Sensitive Elemental and Structural Probe Employing Radiation from a Synchrotron (VESPERS) beamline station in the Canadian light source.

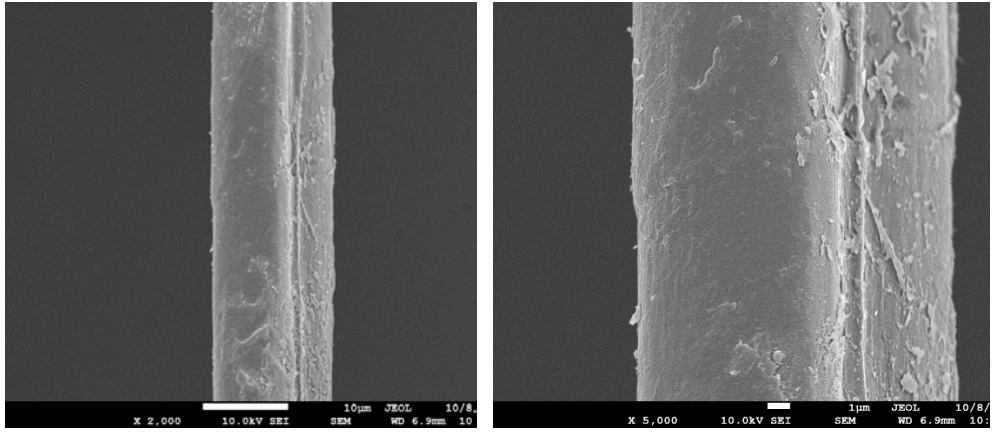


Fig. S3 SEM images of the flax fiber after the plasma treatment.