

## Supporting Information

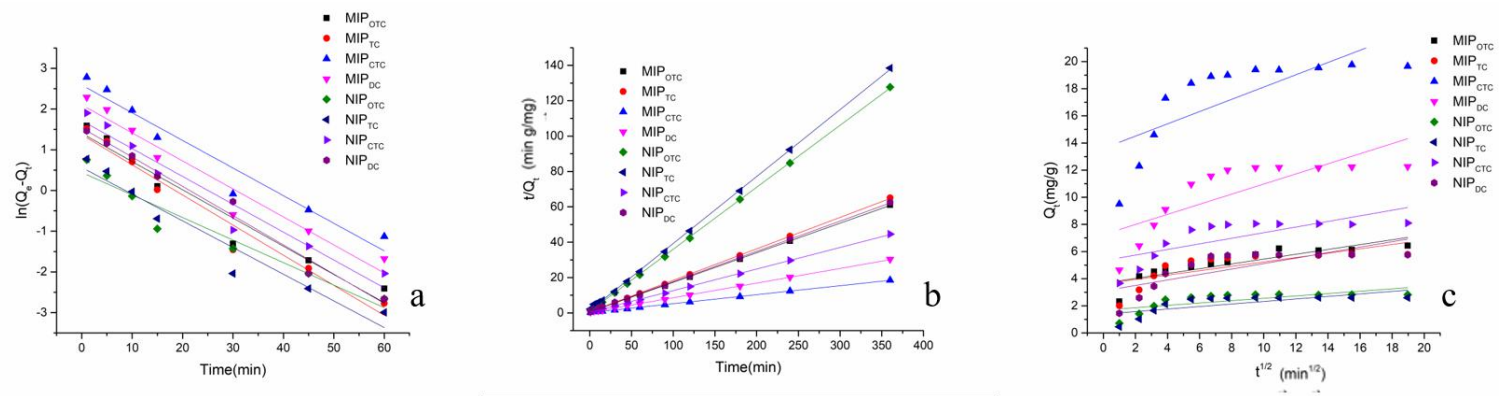


Fig. S1 Pseudo-first-order (a), pseudo-second-order (b) and intra-particle diffusion (c) model fitting curves of TCs adsorption onto MGO@MS@MIP and NIP at 298K

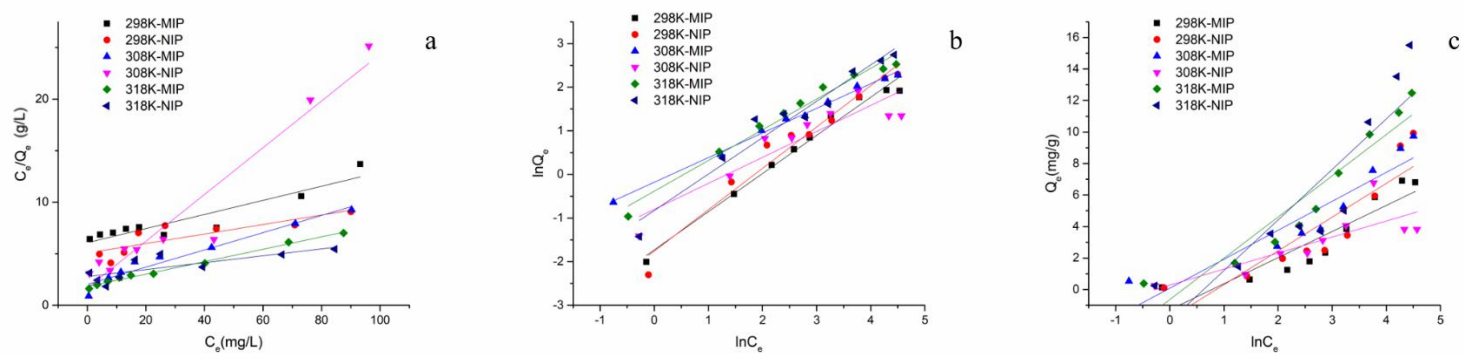


Fig. S2 The Langmuir (a), Freundlich (b) and Tempkin (c) model fitting curves of OTC adsorption onto MGO@MS@MIP and NIP at different temperatures

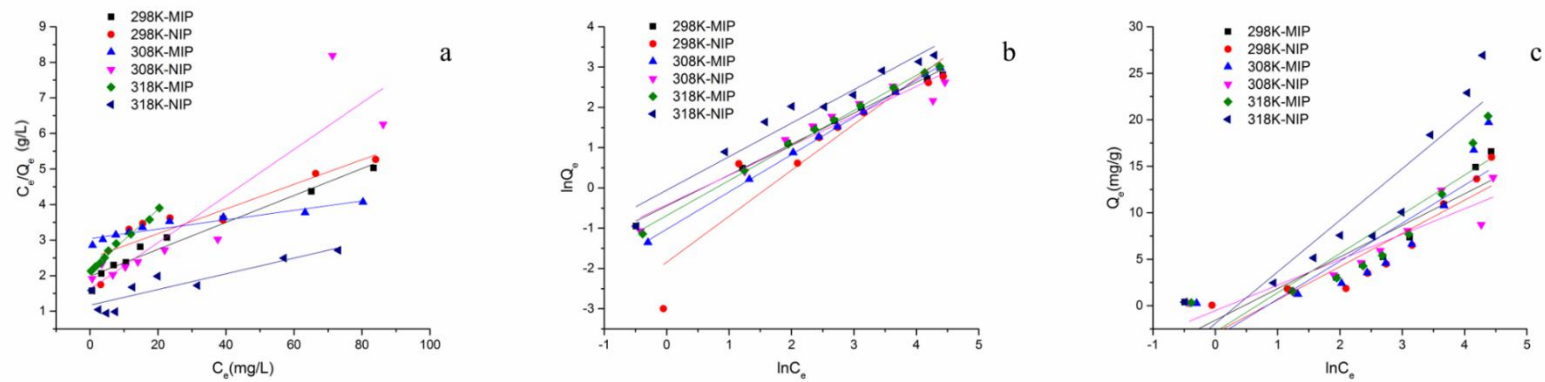


Fig. S3 The Langmuir (a), Freundlich (b) and Tempkin (c) model fitting curves of TC adsorption onto MGO@MS@MIP and NIP at different temperatures

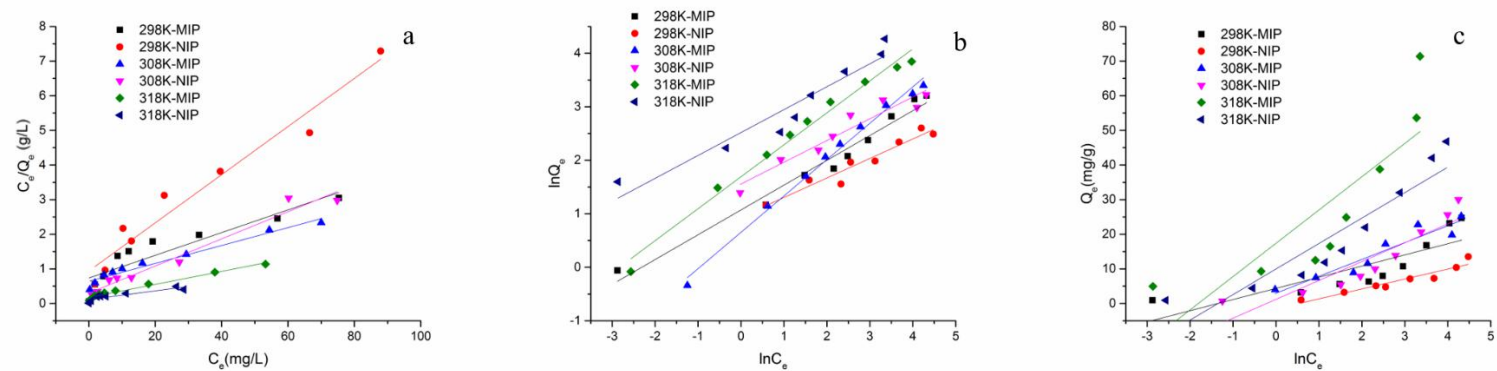


Fig. S4 The Langmuir (a), Freundlich (b) and Tempkin (c) model fitting curves of CTC adsorption onto MGO@MS@MIP and NIP at different temperatures

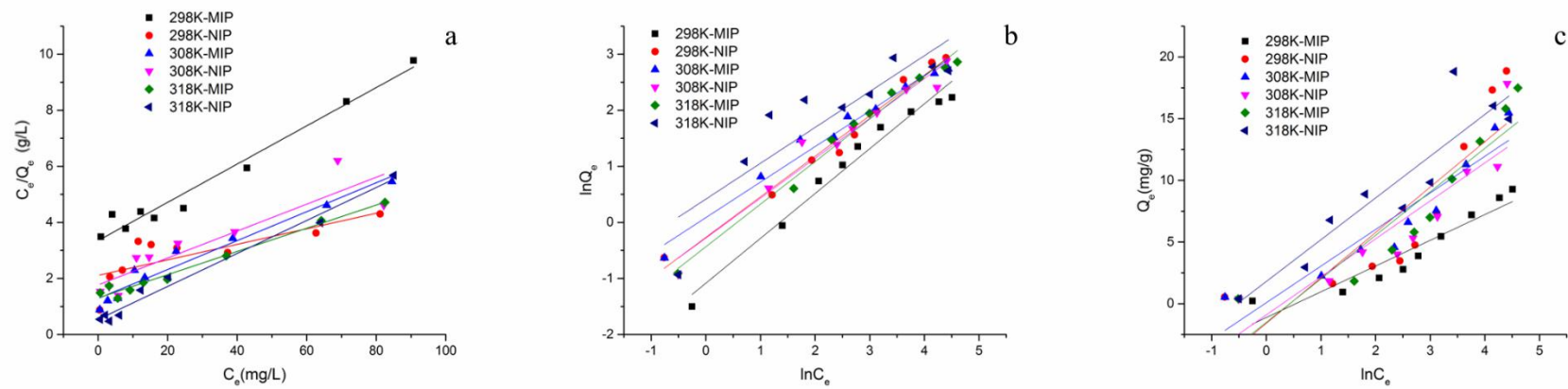


Fig. S5 The Langmuir (a), Freundlich (b) and Temkin (c) model fitting curves of DC adsorption onto MGO@MS@MIP and NIP at different temperatures

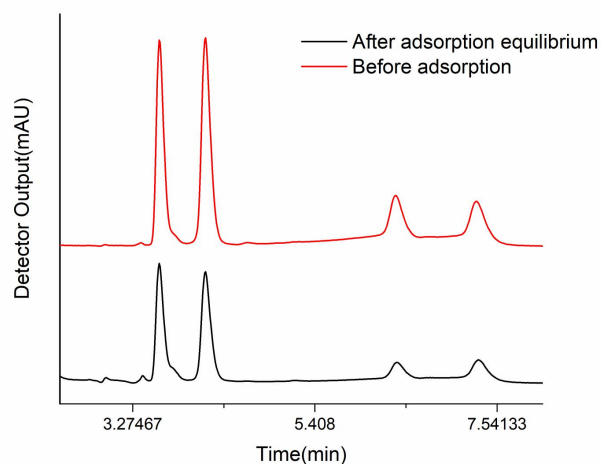


Fig. S6 Two TCs chromatograms of a mixed TCs solution before and after treatment by the MIP. Adsorption conditions: 20 mL of adsorbate solution (20 mg/L); 20 mg of adsorbent; 60 min of contact time; and 298K

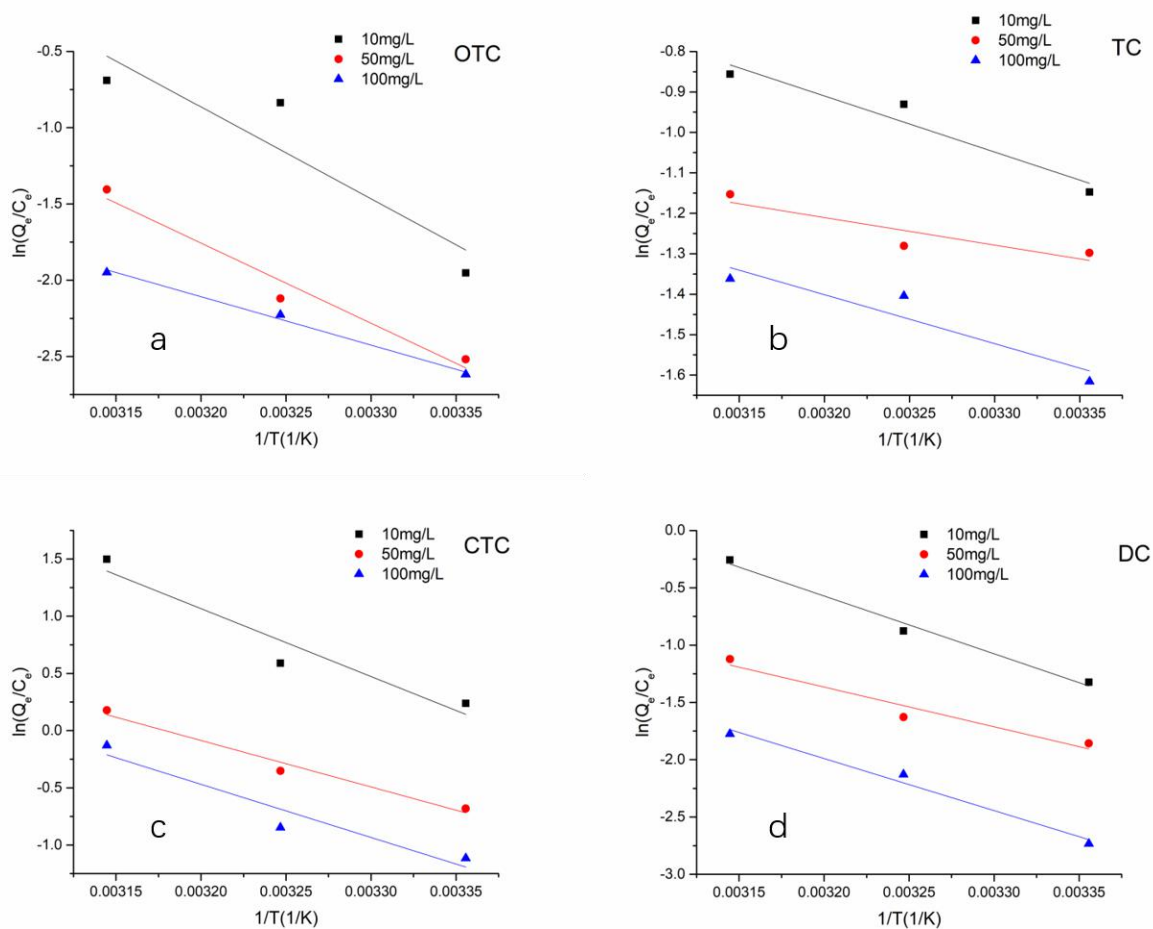


Fig. S7 Adsorption thermodynamics fitting curves of OTC (a), TC (b), CTC(c) and DC(d) onto MGO@MS@MIP

**Table S1** Adsorption amounts of MGO@MS@MIP and NIP toward OTC, TC, CTC and DC in orthogonal optimization experiments

Test	KH-792 (mL)	KH-42 (mL)	MGO@MS (mg)	Template	$Q_{e-MIP}$ (mg/g)
1	0.6	0.6	0.2	OTC	2.42
				TC	0.59
				CTC	5.97
				DC	2.24
2	0.6	1	0.3	OTC	3.40
				TC	1.30
				CTC	1.29
				DC	3.69
3	0.6	1.4	0.4	OTC	2.71
				TC	2.30
				CTC	0.81
				DC	6.28
4	1	0.6	0.3	OTC	4.29
				TC	1.79
				CTC	9.45
				DC	6.92
5	1	1	0.4	OTC	4.24
				TC	2.02
				CTC	7.71
				DC	10.33
6	1	1.4	0.2	OTC	4.26
				TC	2.26
				CTC	19.57
				DC	7.60
7	1.4	0.6	0.3	OTC	4.42
				TC	2.91
				CTC	19.82
				DC	12.77
8	1.4	0.6	0.4	OTC	6.10
				TC	2.23
				CTC	13.93
				DC	8.07
9	1.4	1.4	0.2	OTC	5.09
				TC	4.12
				CTC	14.14
				DC	9.34