

Supplementary Information for

Augment of partial nitrification/anammox in biosorption/partial nitrification/anammox process by using functionalized carriers for energy self-sufficient municipal wastewater treatment

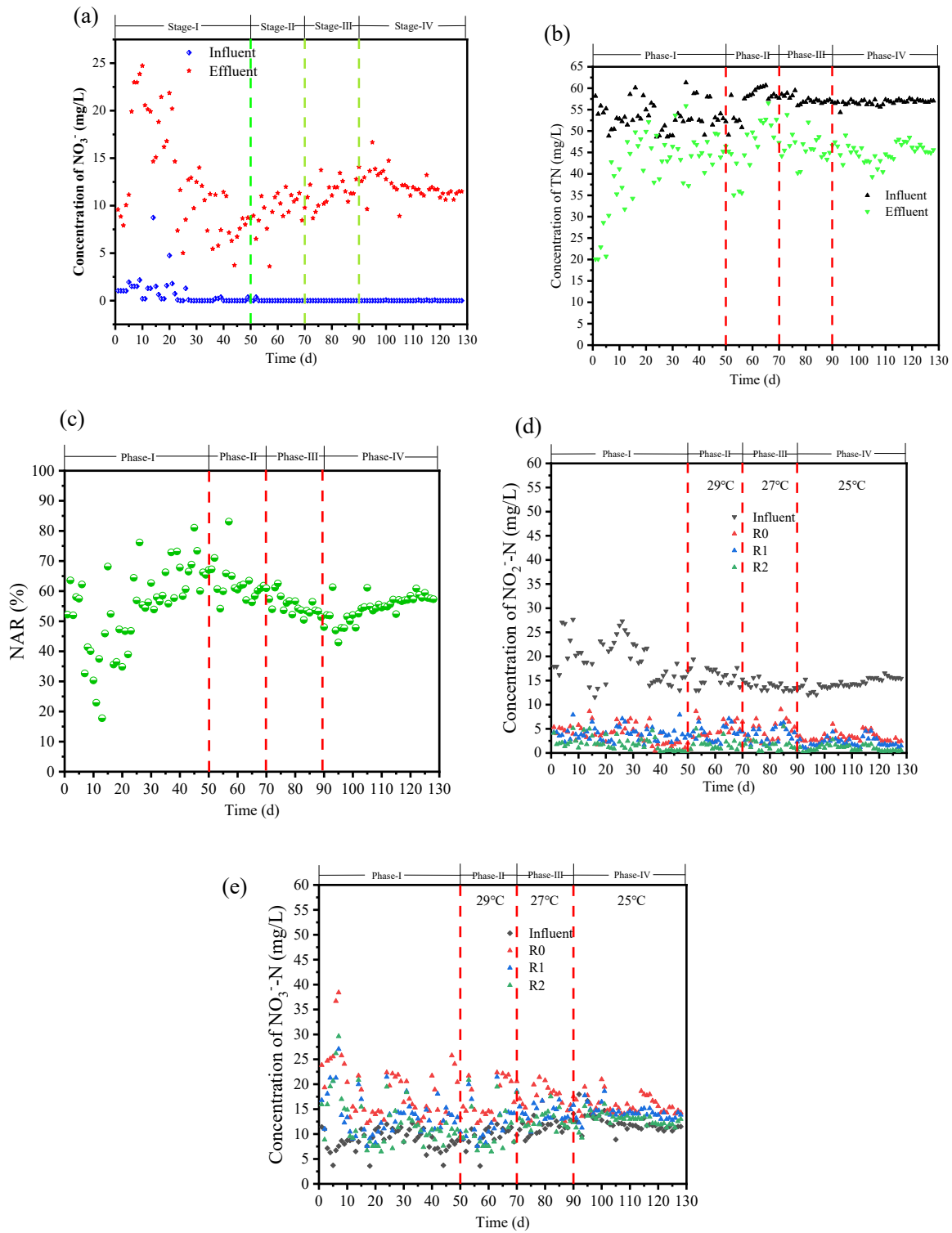


Fig. S1 Influent and effluent concentration of NO_3^- -N (a) and TN (b), and NAR (c) in PN stage. Influent and effluent concentration of NO_2^- -N (d) and NO_3^- -N (e) in Ana-stage.

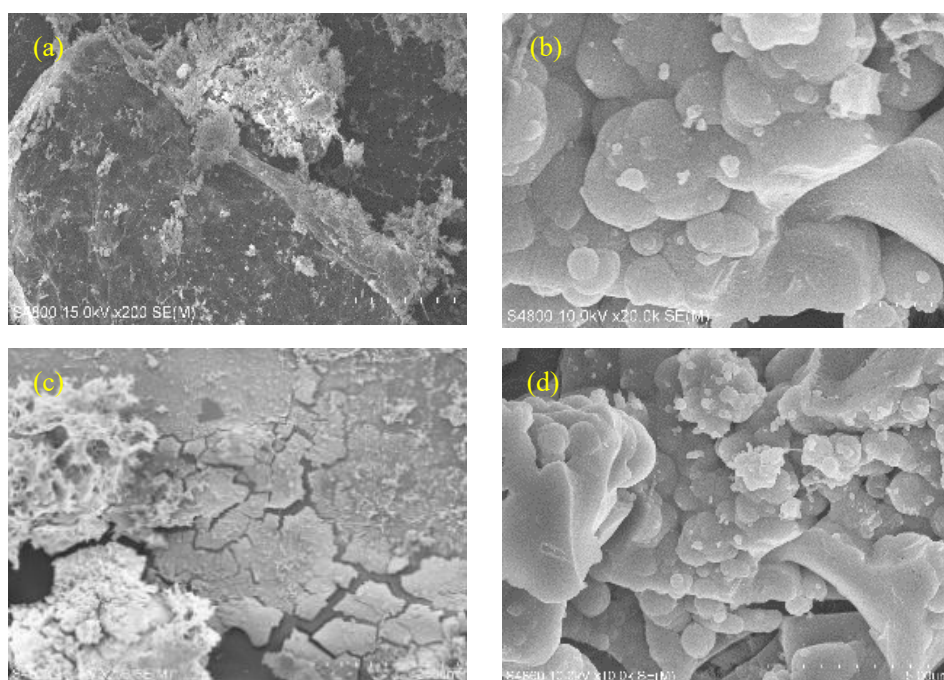


Fig. S2 SEM images of biofilm on suspended carriers in anammox stage (a, b: HDPE carrier; c, d: anammox-functionalized carriers)

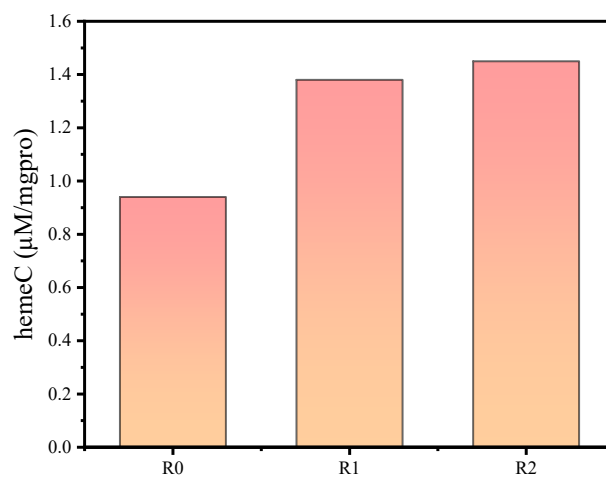


Fig. S3 Heme C content in anammox stage (R0: sludge, R1: HDPE carriers, R2: anammox-functionalized carriers)

Table S1 Operation conditions at different phases

Phase	Operation period (d)	HRT of PN stage (h)	HRT of anammox stage (h)	Temperature (°C)
I	1-50	6	8	29
II	51-70	5	6	29
III	71-90	5	6	27
IV	91-130	5	6	25