

Supplementary Materials

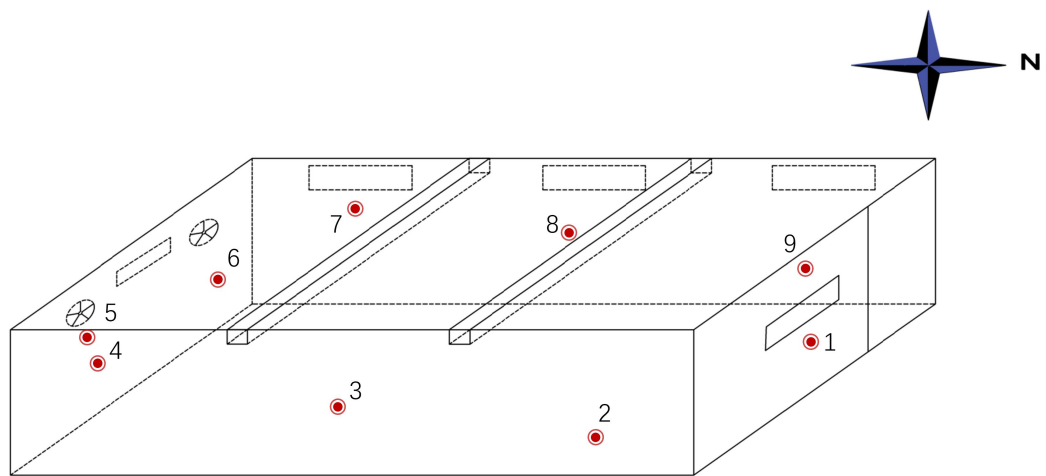


Fig. S1. Specific sampling points for waste storage sites (The red dots represent sampling points)

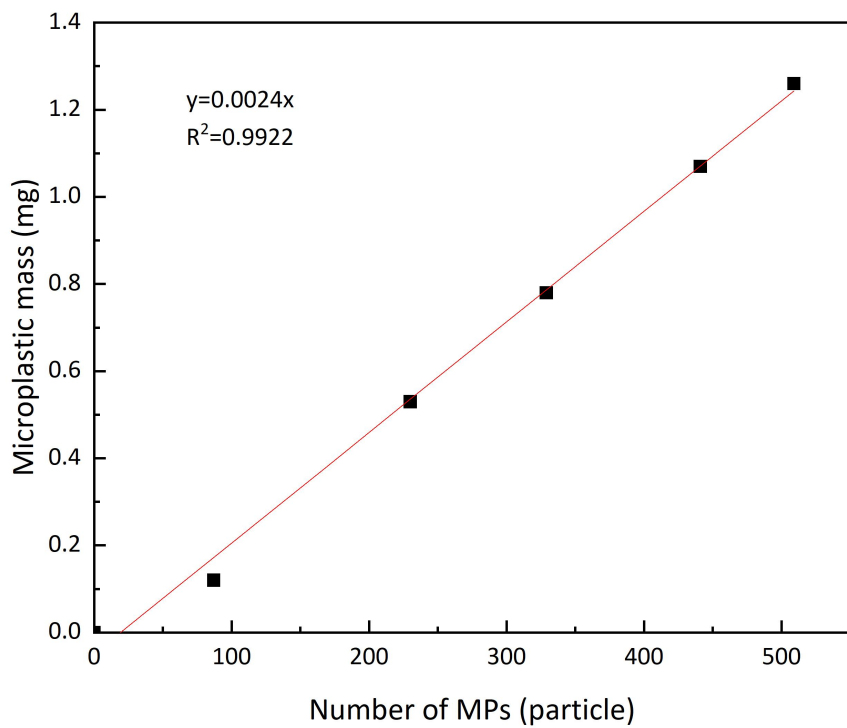


Fig. S2. Relationship between the number and quality of PE standard samples

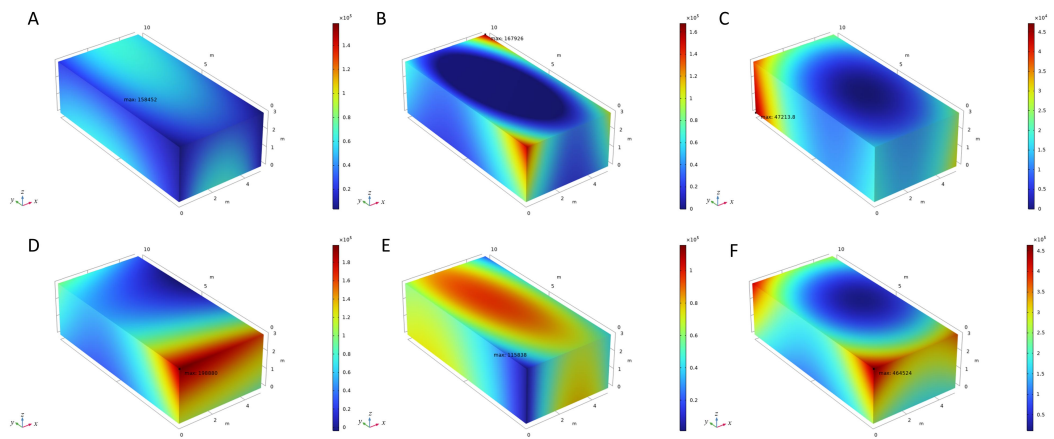


Fig. S3. Concentration field of MPs inside the MSW storage site. (A, B, and C for the natural settling phase following washing, ventilation, and combined washing-ventilation treatments, respectively; D, E, and F for the strongly disturbed phase after the same sequence of treatments.)

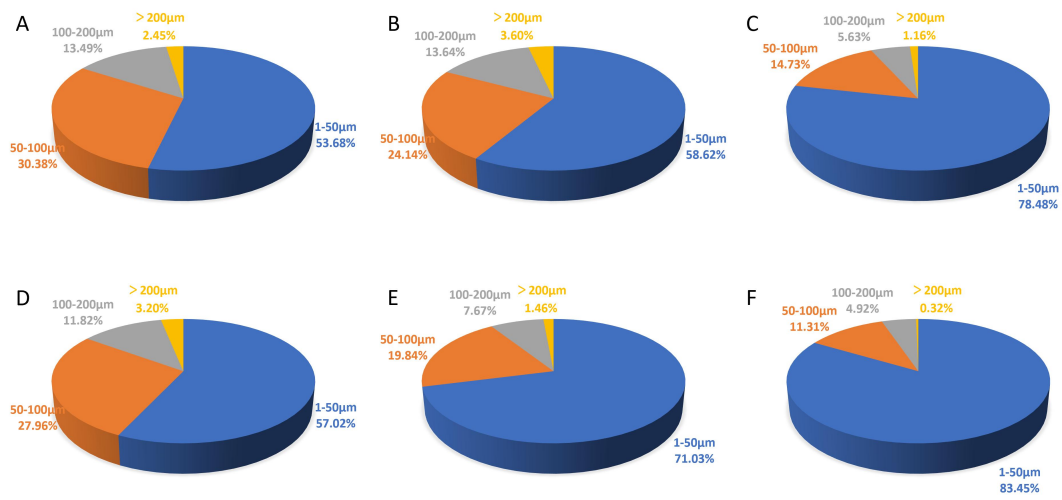


Fig. S4. Particle size distribution of MPs at MSW storage sites. (A, B, and C for the natural settling phase following washing, ventilation, and combined washing-ventilation treatments, respectively; D, E, and F for the strongly disturbed phase after the same sequence of treatments.)

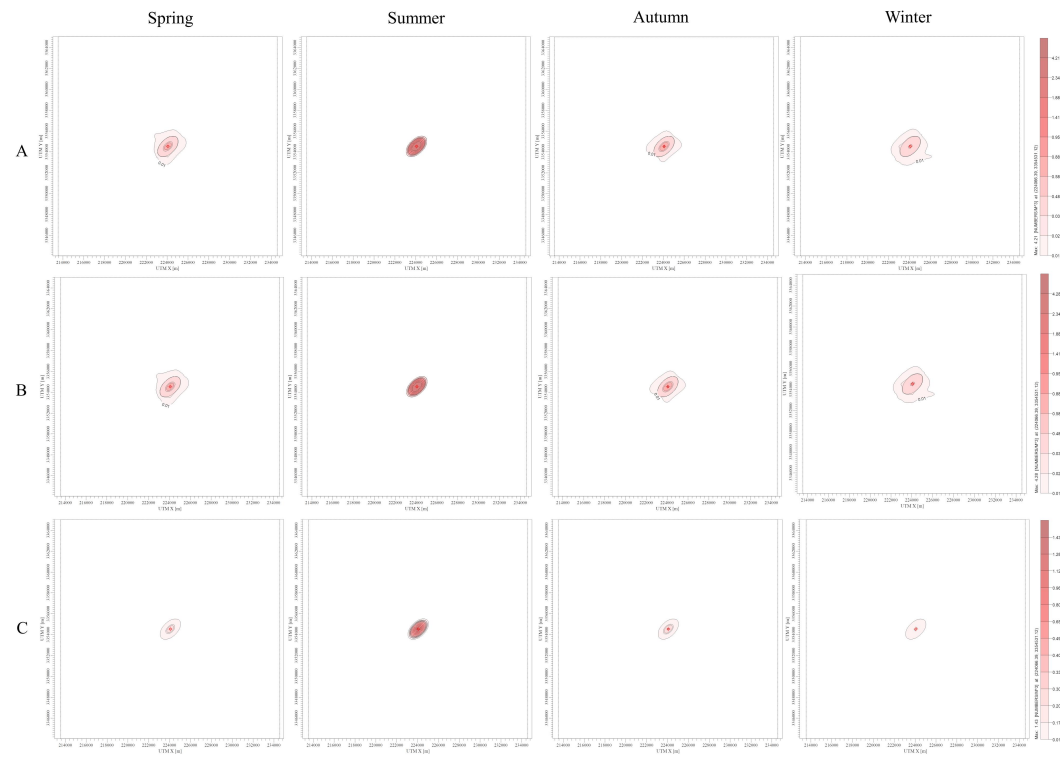


Fig. S5. Concentration distribution of MPs in the natural settling phase at the MSW storage site. (A for cleaning treatment, B for cleaning and ventilation treatment, C for ventilation treatment) (The legend represents microplastic abundance, with darker red colors increasing abundance in n/m³)

Source Inputs

Source Type: Type: POINT Source ID: STCK1 Release Type: Vertical

Description: (Optional)

Source Location

X Coordinate: 224072.95 [m]
 Y Coordinate: 3354536.63 [m]
 Base Elevation: 5.0 [m]
 Release Height: 2.4 [m]

Source Release Parameters

Emission Rate: 0.000496 [g/s]
 Gas Exit Temperature: 25.0 [C] Fixed Ambient Above Ambient
 Stack Inside Diameter: 0.41 [m]
 Gas Exit Velocity: 4.44 [m/s]
 Gas Exit Flow Rate: 0.5862 [m³/s]

Help [Icons] Close

Pathway

Model: AERMOD

- Source Parameters
 - Source Summary
 - Building Downwash
 - Gas & Particle Data
 - Background Concentrations
- Source Options
 - Source Groups
 - Urban Groups
 - Variable Emissions
 - Hourly Emission File
 - Emission Output Unit
- NOx to NO2 Options
 - In-Slack NO2 / NOx Ratios
 - OLM Groups (OLM)
 - PSD Groups (PVMRM)

Emission Rate Units for Output

Default Odor Units User Defined

Output Unit for Concentration

Unit Factor: 1000000
 Emission Unit Label: GRAMS/SEC
 Concentration Unit Label: MICROGRAMS/M**3

Help Previous Next Close

Fig. S6. Pollutant parameter input (A) and output interface (B)

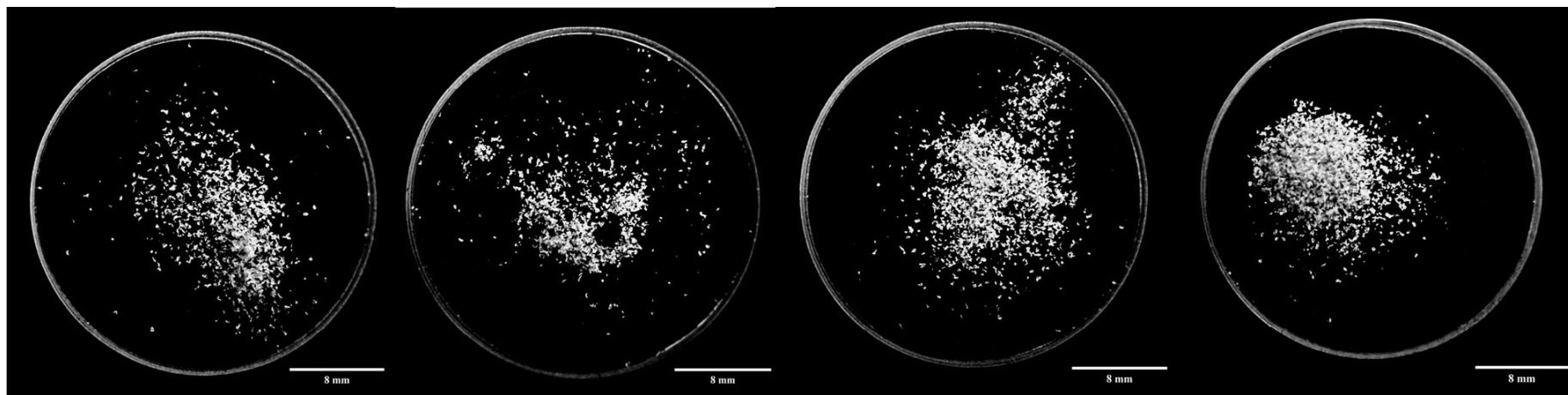


Fig. S7 Morphological distribution of four microplastic stacks