

Supplementary Materials

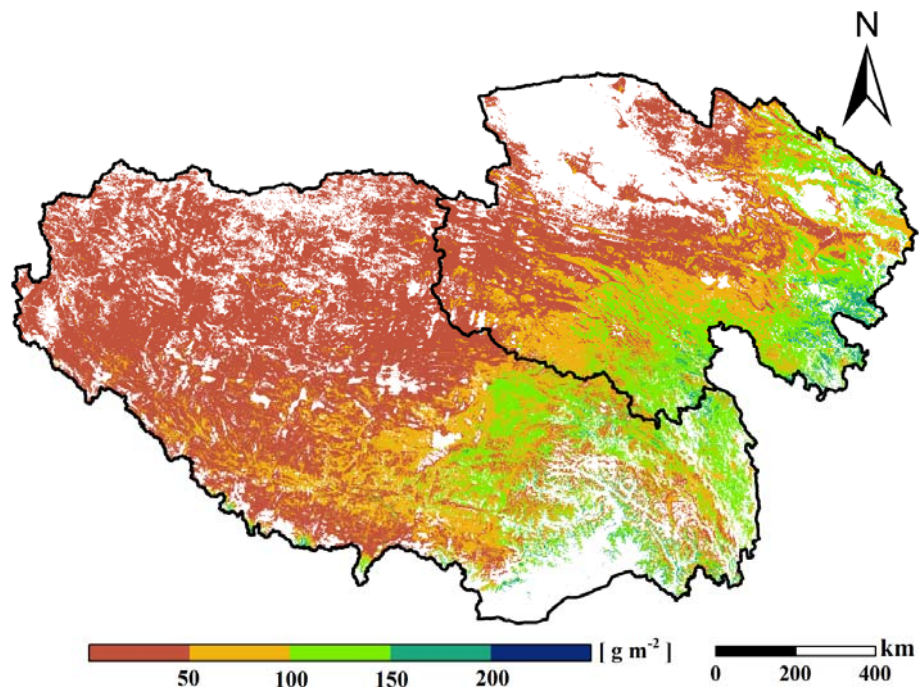


Fig. S1 Spatial distribution of averaged above-ground net primary production (ANPP) in alpine grasslands on the Tibetan Plateau during the period of 2001–2012.

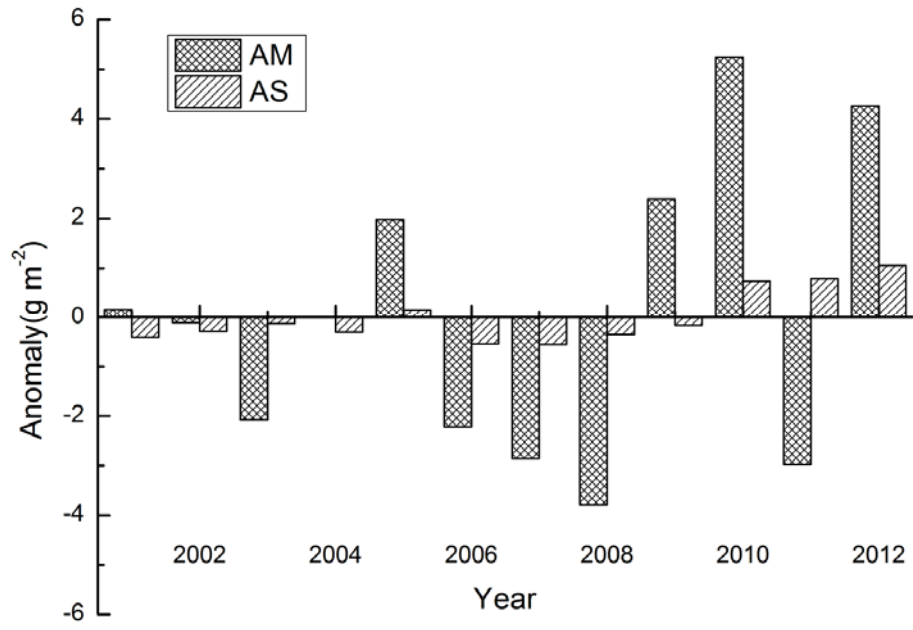


Fig. S2 The above-ground net primary production (ANPP) anomalies in alpine meadow (AM) and alpine steppe (AS) (2001–2012).

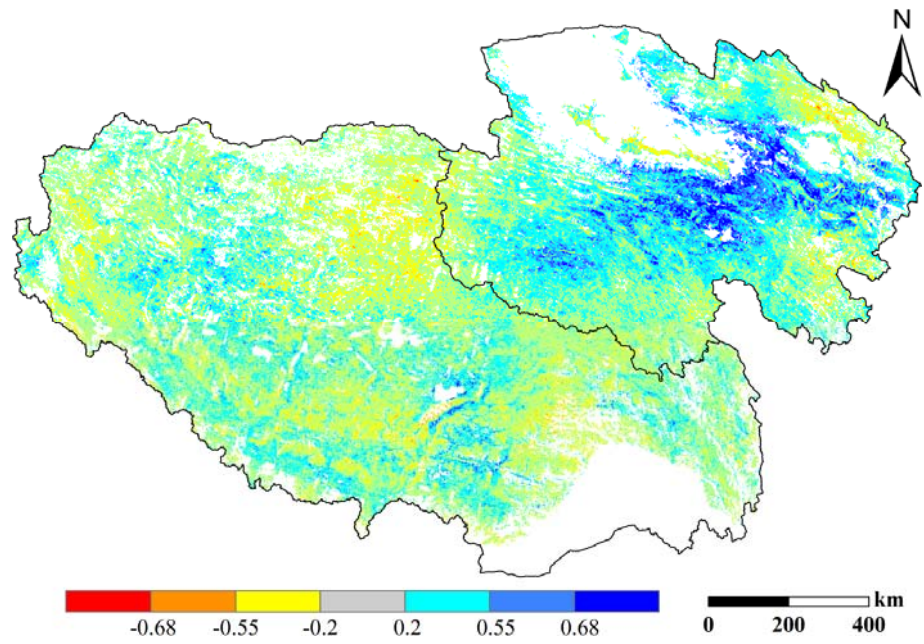


Fig. S3 Spatial linear relationship between above-ground net primary production (ANPP) and mean annual precipitation (MAP) in alpine grasslands on the Tibetan Plateau during the period of 2000–2012. Where, $r=0.55$ and $r=0.68$ correspond statistically to 0.05 and 0.01 significance levels, respectively.

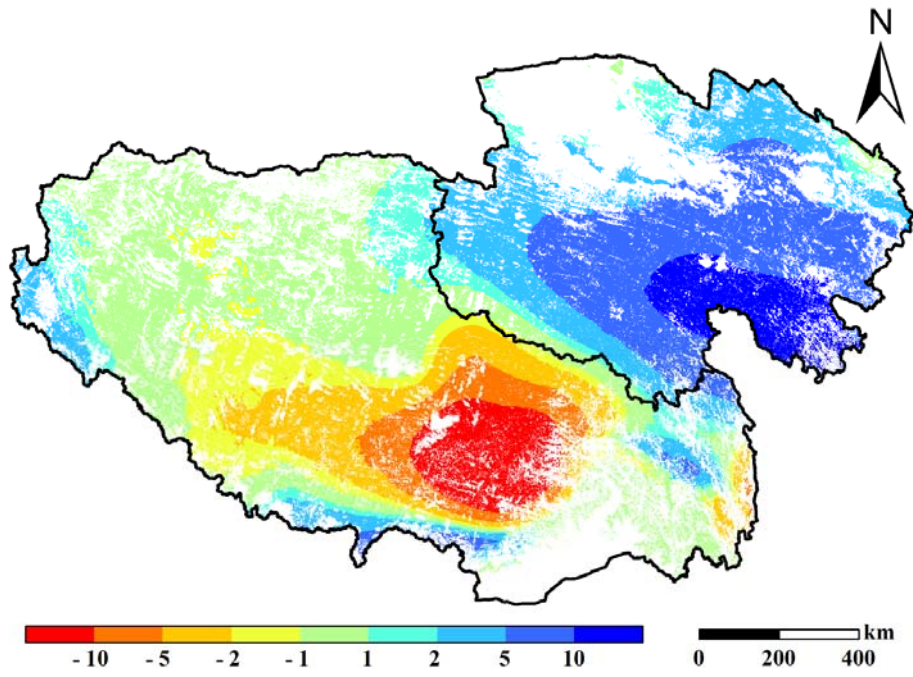


Fig. S4 Spatial distribution of trends in the mean annual precipitation (MAP) anomalies in alpine grasslands on the Tibetan Plateau during the period of 2001–2012.

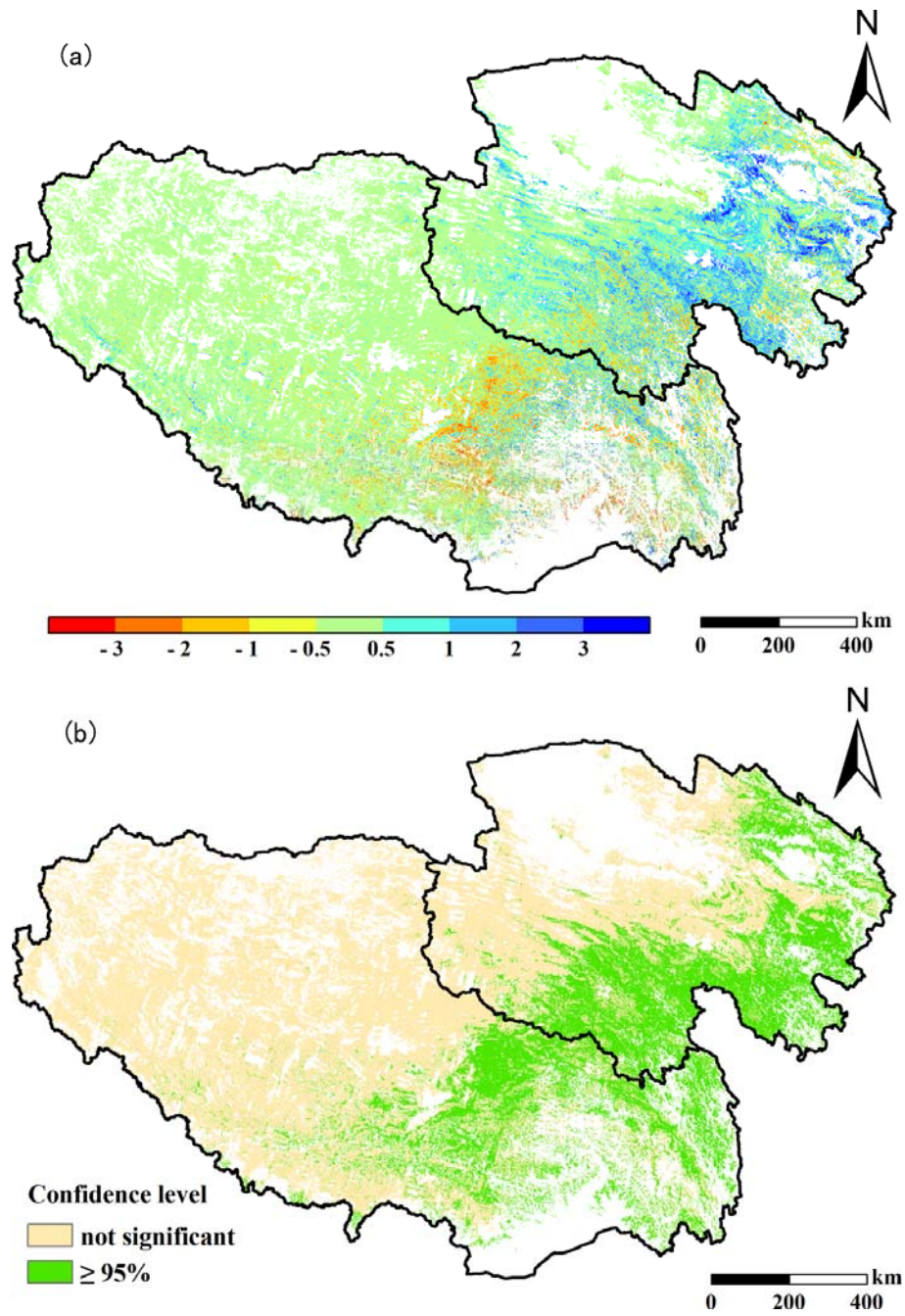


Fig. S5 The slope of inter-annual above-ground net primary production (ANPP, a) in alpine grasslands on the Tibetan Plateau (a) and the corresponding confidence level (t-test) (b) during the period of 2001–2012.