

Electronic Supplementary Material

Development of mono and bimetallic Ni, Fe and NiM catalysts for CO₂ methanation on sustainable biochar supports

Abdulrahman Adamu Isah (✉)¹, Ali Abdelaal², Yahaya Nasiru³, Kai C. Szeto³, Mostafa Taoufik (✉)³, Khoulood Jlassi (✉)², Aboubakr M. Abdullah (✉)², Mohamed M. Chehimi (✉)¹

1 Université Paris Cité, CNRS, ITODYS (UMR 7086), Paris 75013, France

2 Center for Advanced Materials, Qatar University, Doha 2713, Qatar

3 Université Lyon 1, Institut de Chimie Lyon, CPE Lyon CNRS, UMR 5128, CP2M, CPM, 69616 Villeurbanne, France

E-mails: abdulrahman-adamu.isah@cnrs.fr (Isah A A); mostafa.taoufik@univ-lyon1.fr (Taoufik M); khoulood.jlassi@qu.edu.qa (Jlassi K); bakr@qu.edu.qa (Abdullah M A); mohamed.chehimi@cnrs.fr (Chehimi M M)

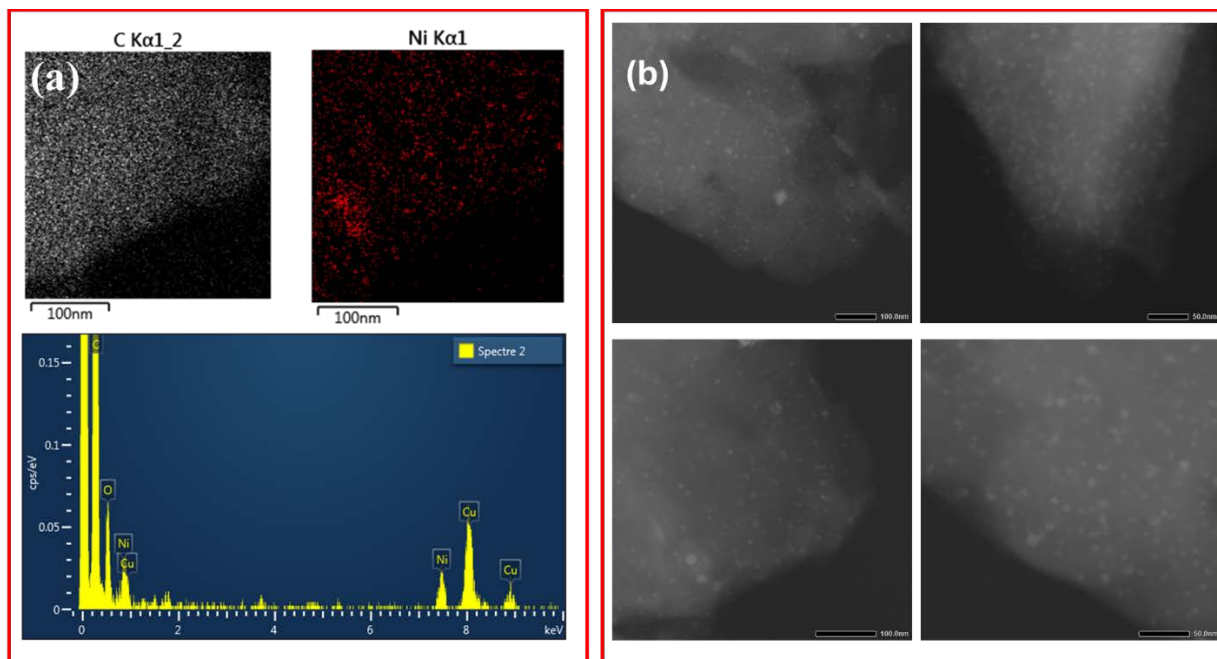


Figure S1. (a) EDX mapping and spectrum and (b) STEM images of **BCNi-3.0**

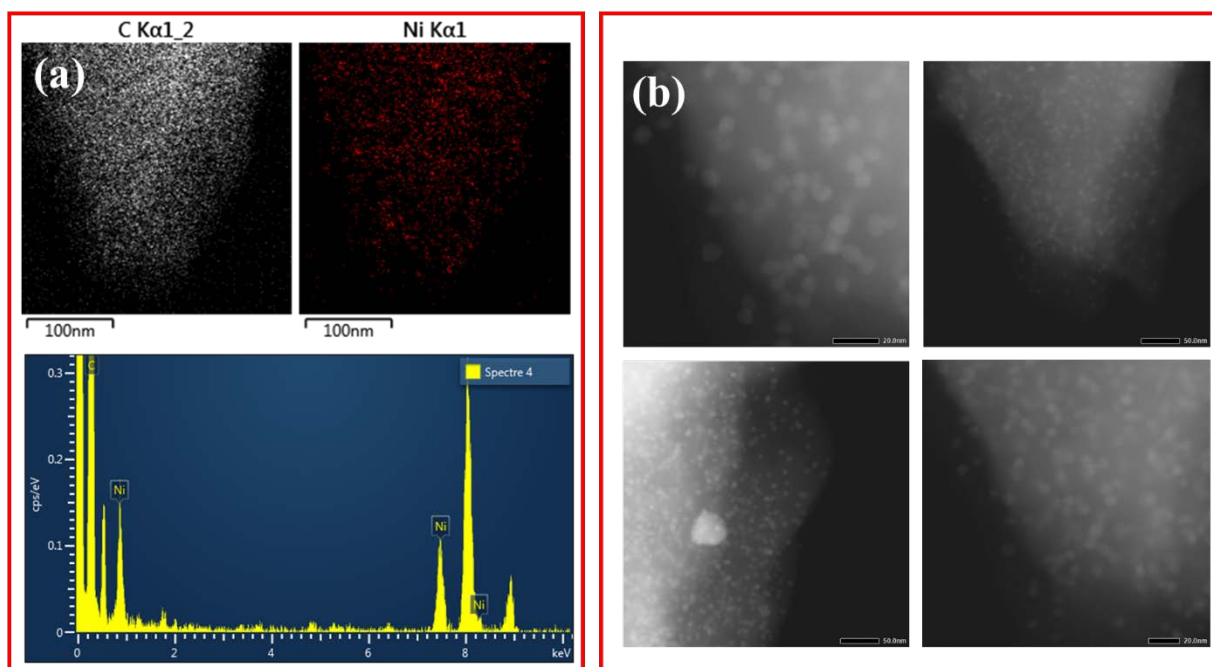


Figure S2. (a) EDX mapping and spectrum and (b) STEM images of **BCNi-7.0**

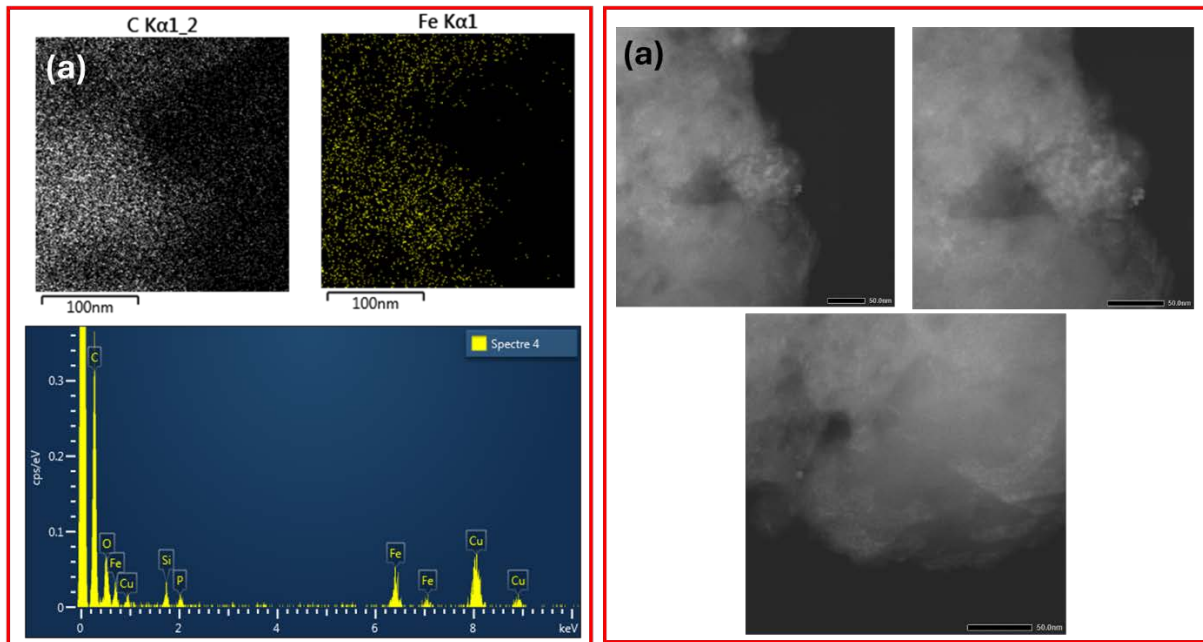


Figure S3. (a) EDX mapping and spectrum and (b) STEM images of **BCFe-3.0**

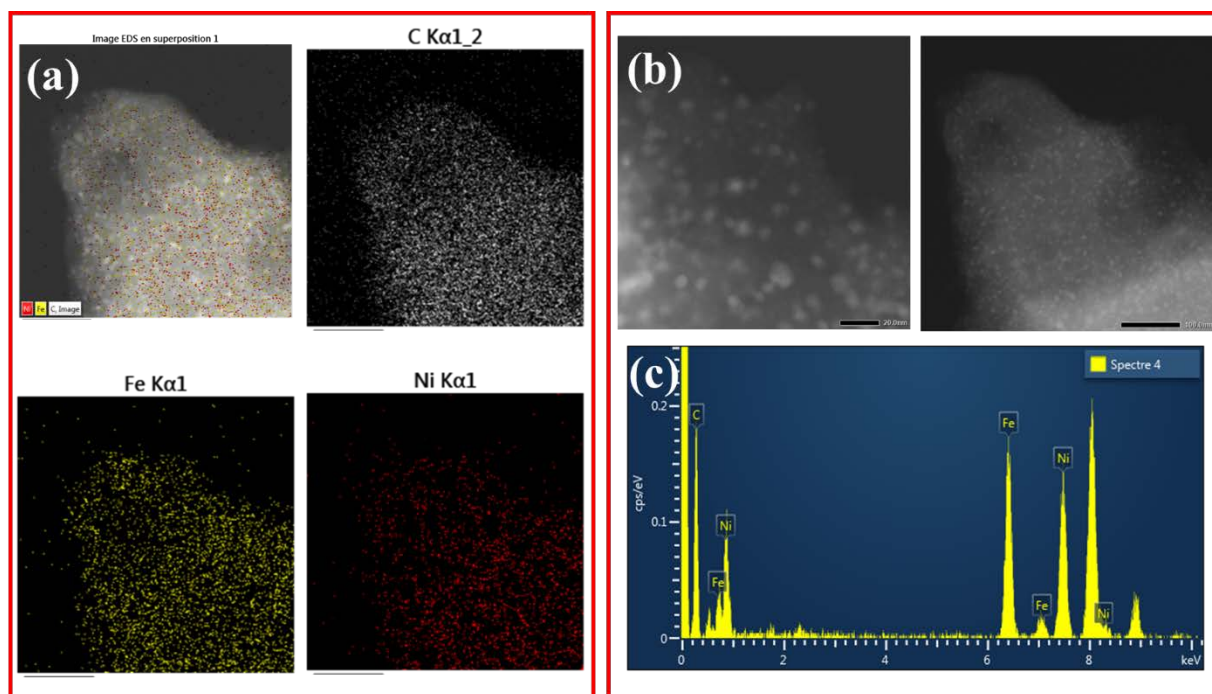


Figure S4. (a) EDX mapping and spectrum and (b) STEM images of **BCFeNi-0.5**