

Electronic Supplementary Material

Radial porous SiO₂ nanoflowers potentiate the effect of antigen/adjuvant in antitumor immunotherapy

Chuangnian Zhang^{1,*}, Ying Dong^{2,*}, Jing Gao², Xiaoli Wang (✉)¹, Yanjun Jiang (✉)²

¹ Tianjin Key Laboratory of Biomaterial Research, Institute of Biomedical Engineering, Chinese Academy of Medical Sciences & Peking Union Medical College, Tianjin 300192, China

² School of Chemical Engineering and Technology, Hebei University of Technology, Tianjin 300130, China

E-mails: wangxl@bme.pumc.edu.cn (Wang X); yanjunjiang@hebut.edu.cn (Jiang Y)

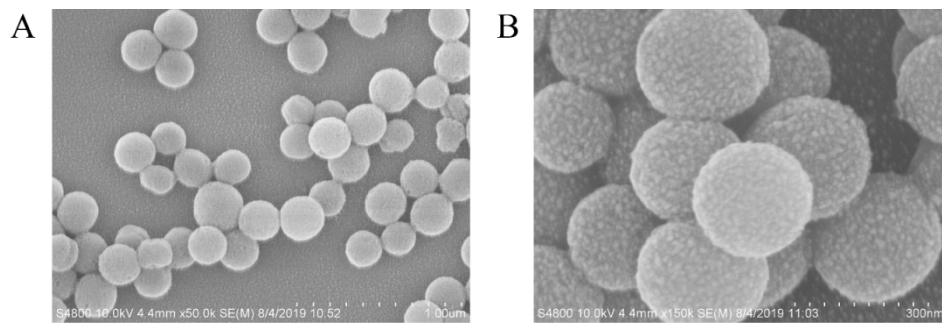


Figure S1. SEM images of OVA@fSiO₂ after incubating at pH 5.0 for 27 days

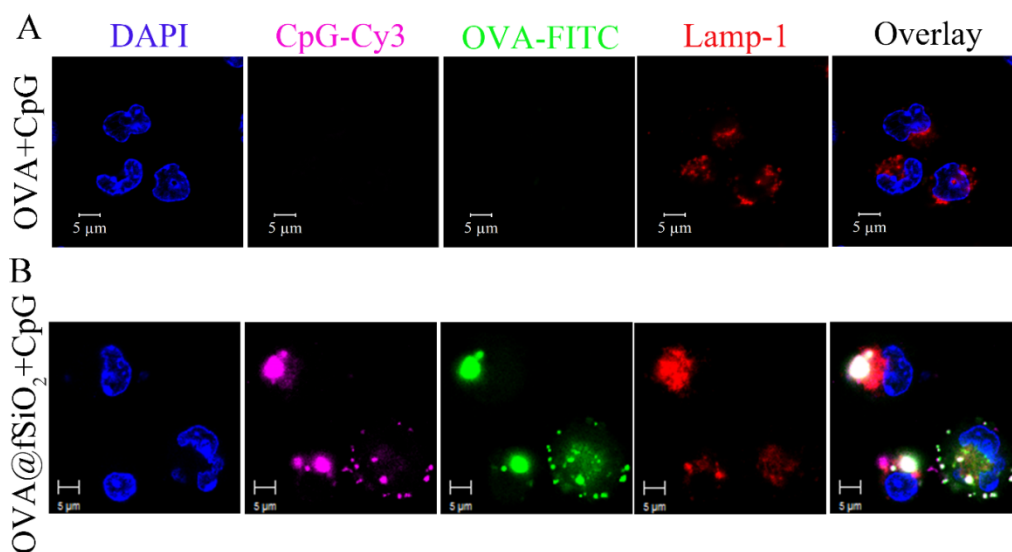


Figure S2. CLSM images of BMDCs after incubating with free OVA+CpG (A), and OVA@fSiO₂+CpG (B) for 8 h, the endosomes/lysosomes were stained with Lamp-1.

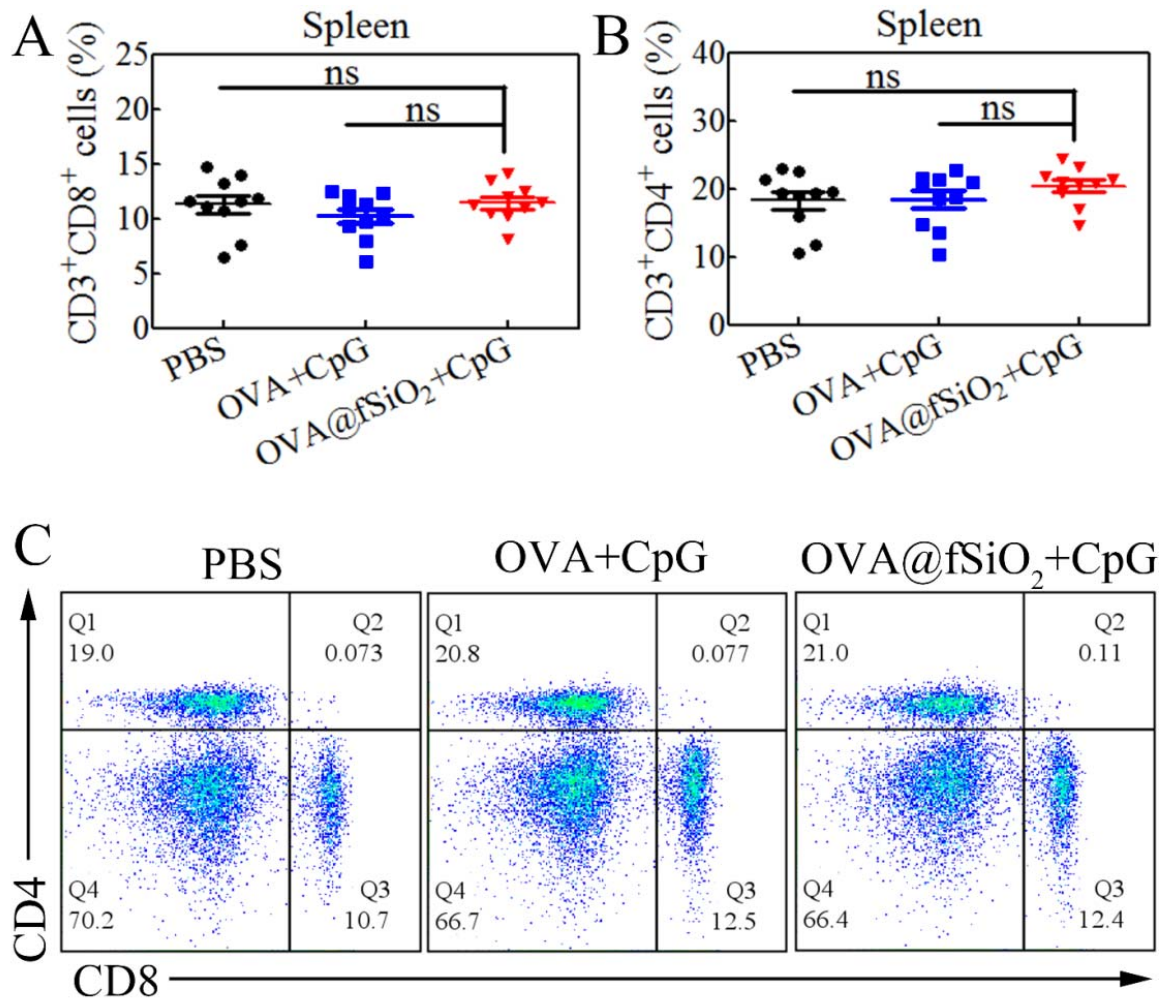


Figure S3. Percentages of CD3⁺CD8⁺ (A) and CD3⁺CD4⁺ (B) T cells in the spleen of the immunized mice determined by flow cytometry, and their representative scatter plots (C). The bars were shown as mean \pm standard error (n = 10). The differences between the groups were determined using one-way ANOVA with Newman-Keuls Multiple Comparison Test.

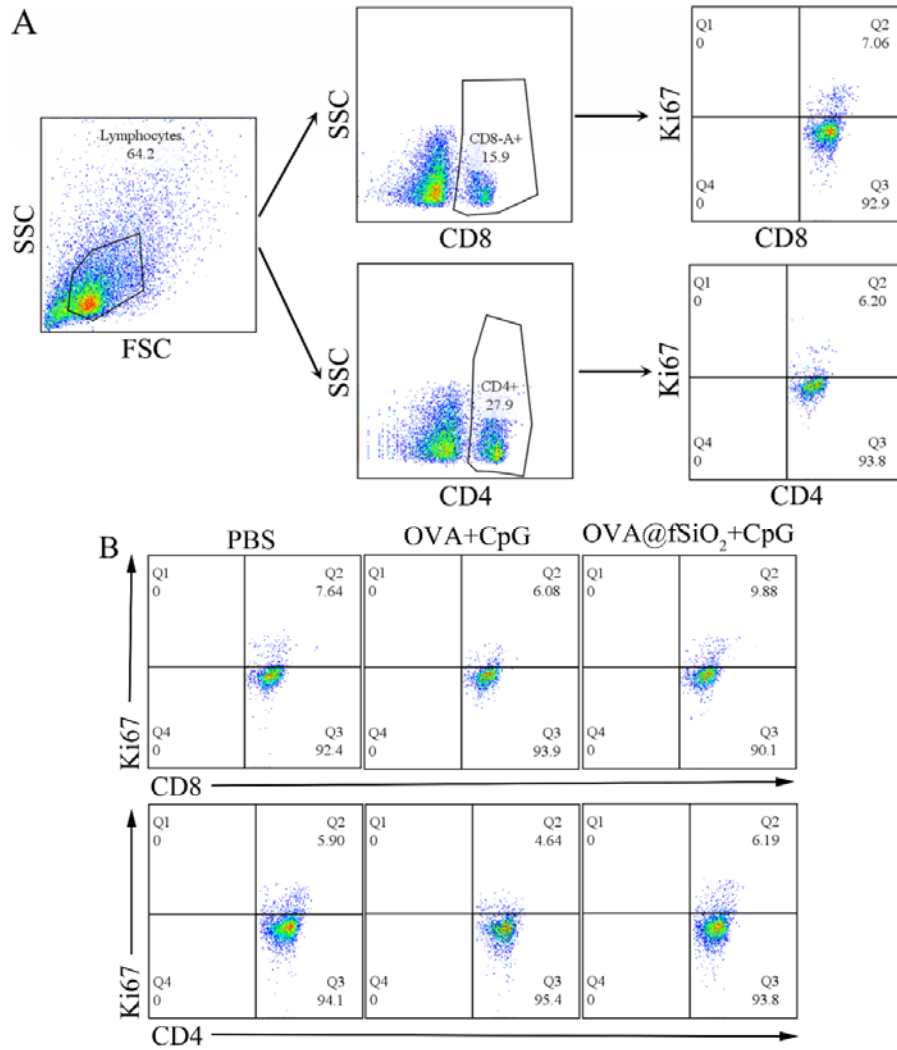


Figure S4. The gate strategies (A) and their representative scatter plots (B) of CD8⁺Ki67⁺ and CD4⁺Ki67⁺ T cells in mouse spleen determined by flow cytometry.

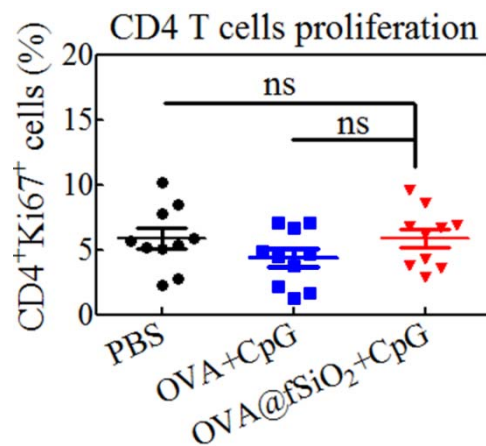


Figure S5. The percentages of CD4⁺Ki67⁺ T cells in mouse spleen. The data were means \pm standard error (n = 10) and the differences were determined using one-way ANOVA with Newman-Keuls Multiple Comparison Test.

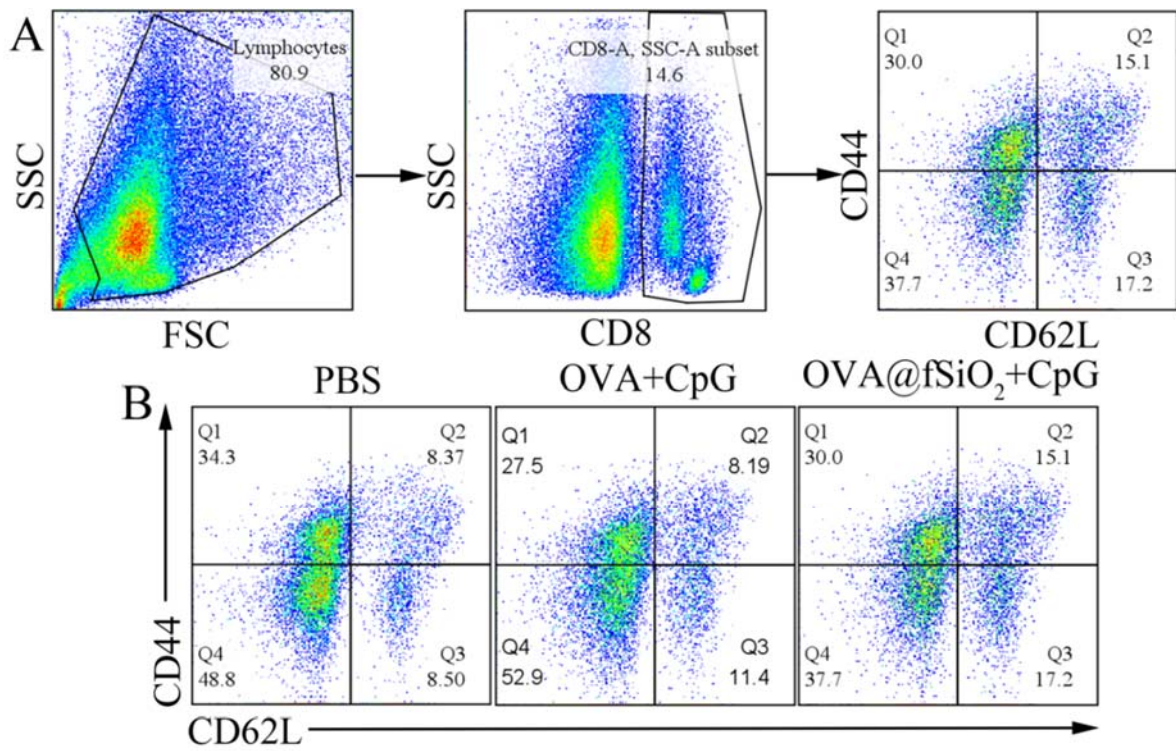


Figure S6. The gate strategies (A) and their representative scatter plots (B) of CD44⁺CD62L⁺ and CD44⁺CD62L⁻ among CD8⁺ T cells in mouse spleen determined by flow cytometry.

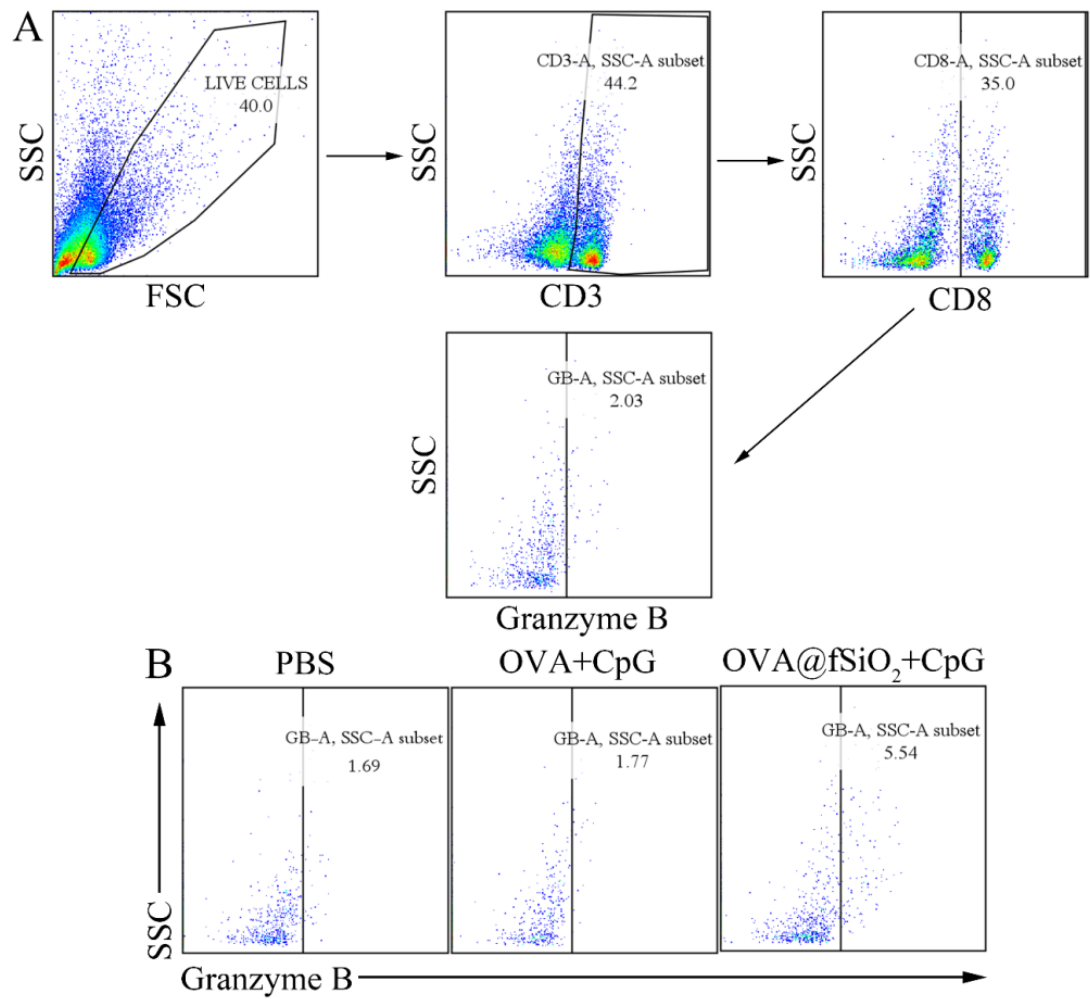


Figure S7. The gate strategies (A) and their representative scatter plots (B) of CD3⁺CD8⁺Granzyme B⁺ T cells in mouse spleen determined by flow cytometry.

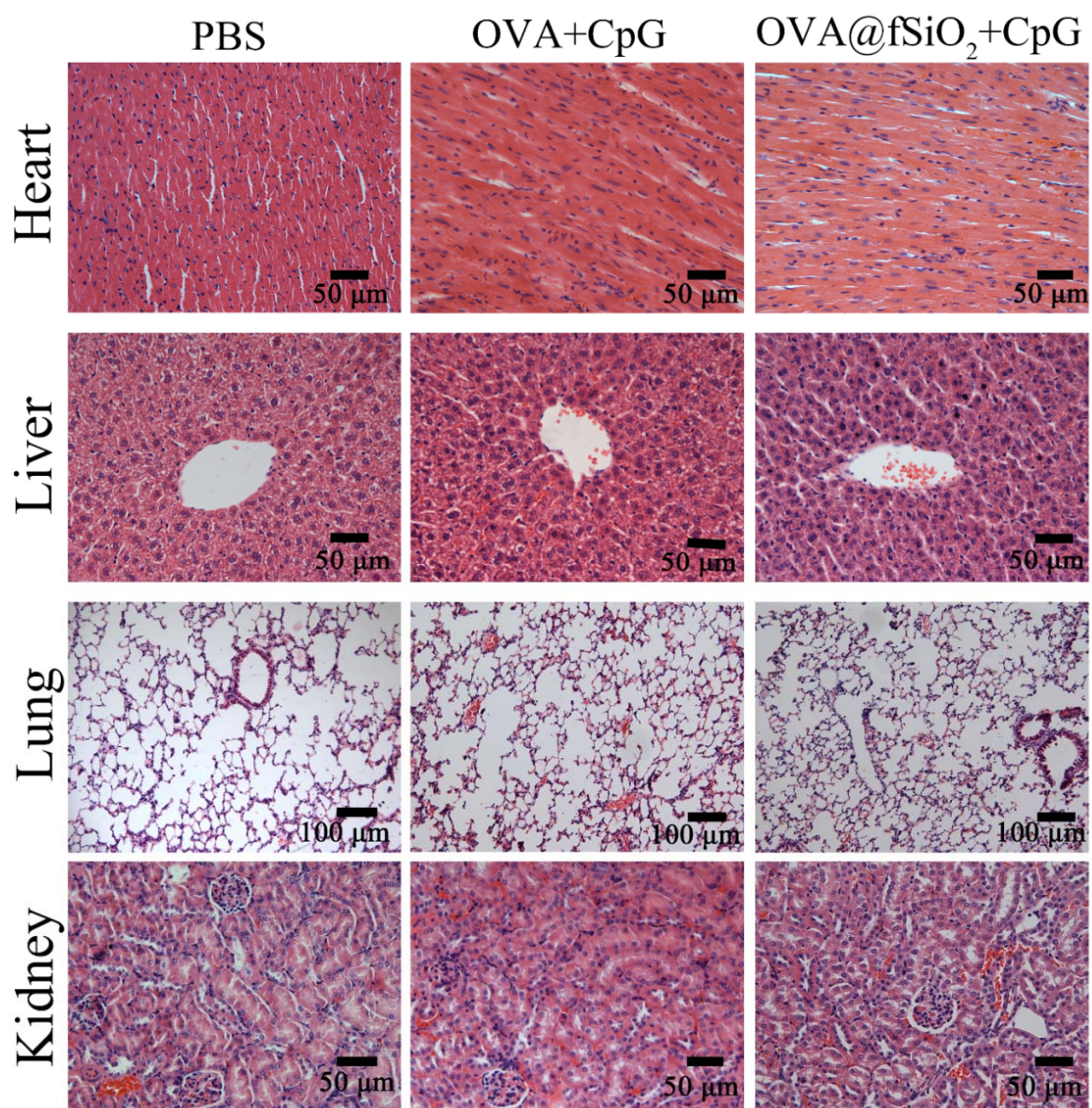


Figure S8. Section images of mouse organs stained with hematoxylin and eosin (HE), the magnification of all the images was 40× except for the lung (20×).