

Electronic Supplementary Material

Crystal-to-crystal transformation from the triclinic to the cubic crystal system by partial desolvation

Qianqian Guo, Irmgard Kalf, Ulli Englert (✉)

Institute of Inorganic Chemistry, RWTH Aachen University, Aachen, Germany

© Higher Education Press and Springer-Verlag GmbH Germany, part of Springer Nature 2018

E-mail: ullrich.englert@ac.rwth-aachen.de

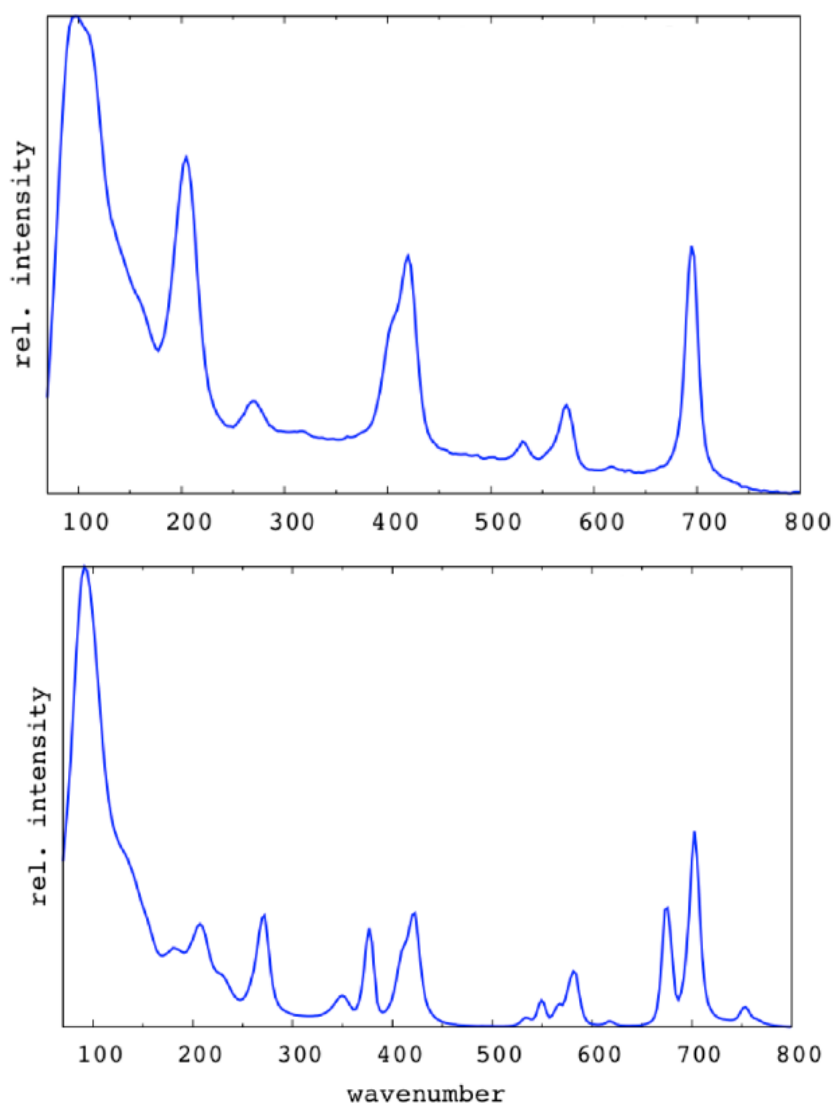


Fig. S1 Raman spectra of **1a** (top) and **1b** (bottom)

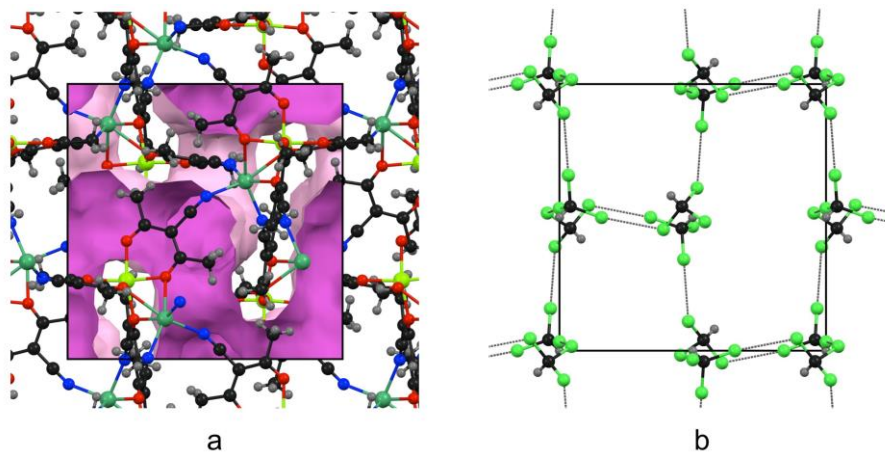


Fig. S2 Packing of **1b** in [1 0 0] direction. (a): coordination network as ball and stick presentation, clathrated solvent molecules omitted [1]; void space is shown as pink surface. (b): CHCl_3 solvent molecules co-crystallized in **1b**; $\text{Cl} \cdots \text{Cl}$ contacts of *ca.* 3.37 Å are shown as dashed black lines

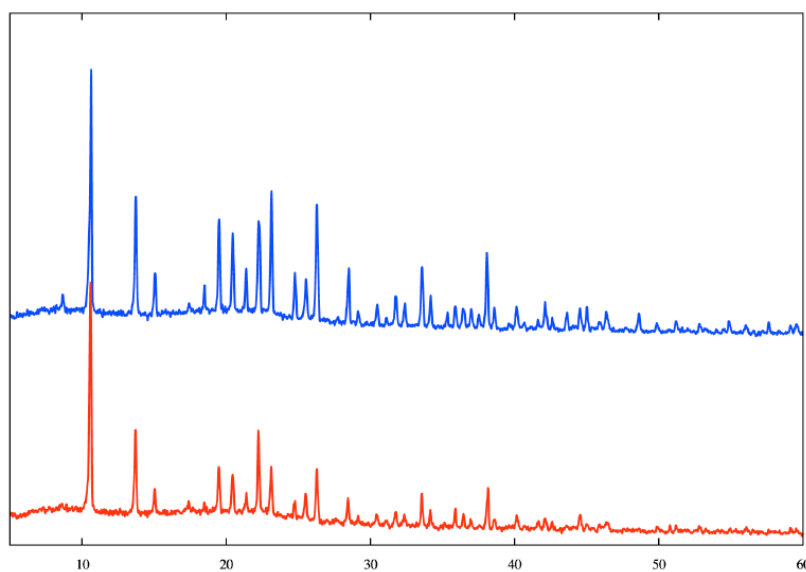


Fig. S3 X-ray powder patterns for **1b**; the diffractogram depicted in blue corresponds to a freshly prepared sample, that in red to a sample stored at ambient temperature for 3d. The freshly prepared sample shows more intense lines at higher diffraction angles

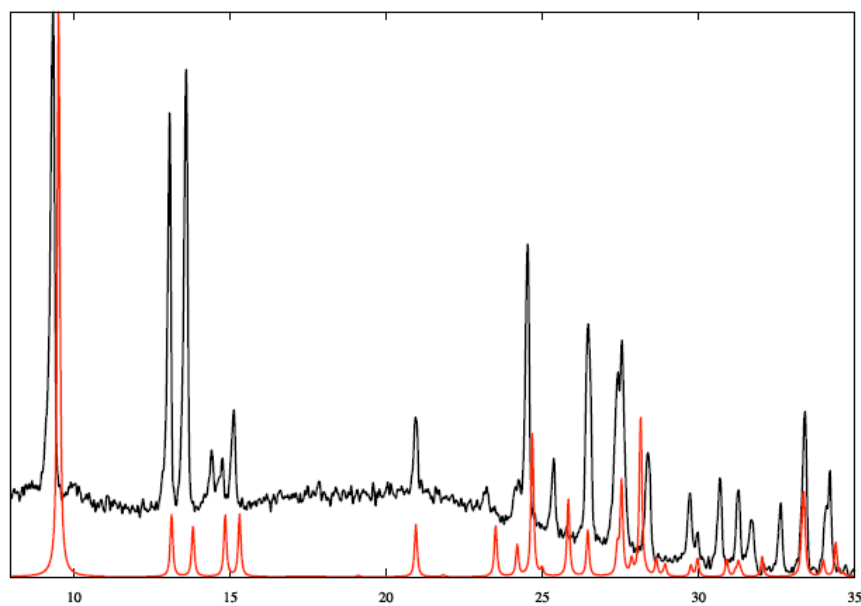


Fig. S4 Simulated and experimental powder patterns for Ag(acacCN)

Reference

1. Macrae C F, Edgington P R, McCabe P, Pidcock E, Shields G P, Taylor R, Towler M, van de Streek J. Mercury: visualization and analysis of crystal structures. *Journal of Applied Crystallography*, 2006, 39(3): 453-457