

Incorporation of 3-dimensional lycopodium with hydrophobic nature and interconnected nano-channels into polyvinylidene fluoride membranes for desalination applications by vacuum membrane distillation

Saeed Seraj, Toraj Mohammadi (✉), Maryam Ahmadzadeh Tofighy (✉)

Center of Excellence for Membrane Research and Technology, Department of Chemical, Petroleum and Gas Engineering, Iran University of Science and Technology (IUST), Tehran 1684613114, Iran

E-mails: torajmohammadi@iust.ac.ir (Mohammadi T); ahmadzadehtofighi@iust.ac.ir (Tofighy

M A)

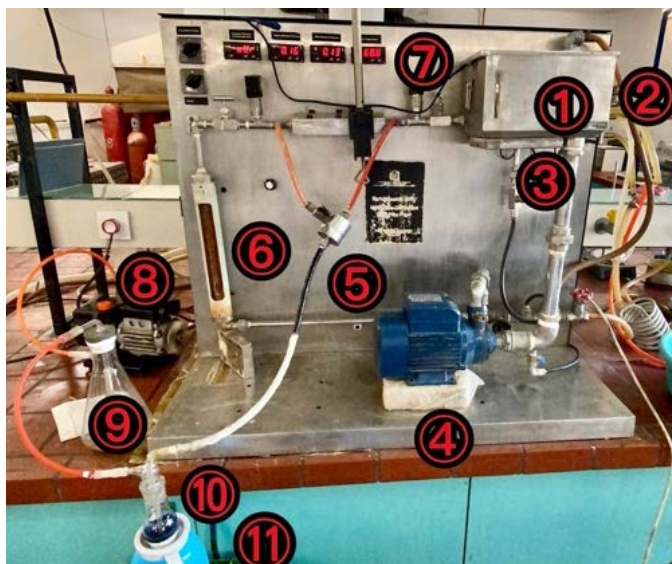


Figure A1. Illustration of MD experimental setup including (1) Feed tank, (2) Cold coil, (3) Heater, (4) Circulation pump, (5) Flat and sheet module, (6) Rotameter, (7) Temperature controller, (8) Vacuum pump, (9) Dehumidifier, (10) Vapor trap, and (11) Liquid N₂ reservoir.

Factor Coding: Actual

Rejection (%)

Actual Factors

A = 17.999

B = 0.802

C = 0.279

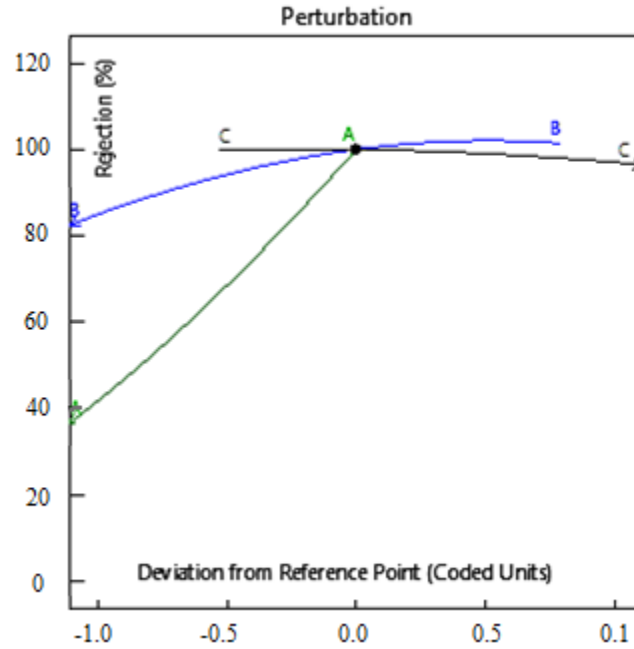


Figure A2. Optimum point and variable surfaces.

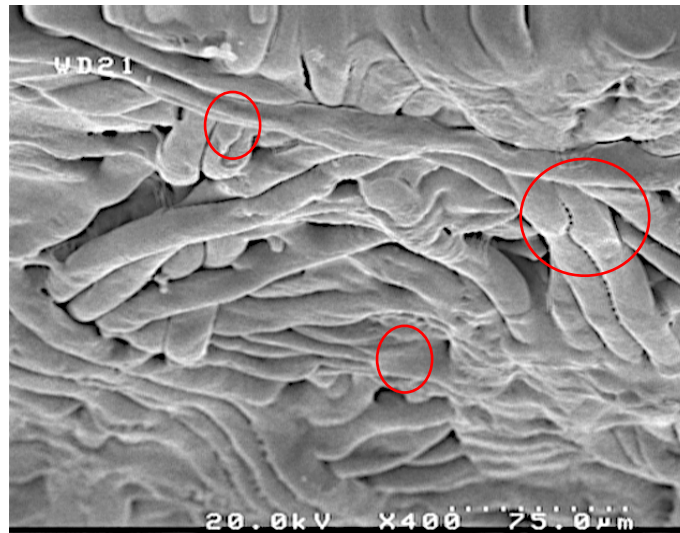


Figure A3. Polymer penetration into warp and weft structure of the non-woven.