

Electronic Supplementary Material

Hierarchical porous carbon derived from one-step self-activation of zinc gluconate for symmetric supercapacitors with high energy density

Junlei Xiao¹, Hua Zhang (✉)², Yifan Wang¹, Chunmei Zhang (✉)³, Shuijian He¹,
Shaohua Jiang (✉)¹

1 Jiangsu Co-Innovation Center of Efficient Processing and Utilization of Forest Resources,
International Innovation Center for Forest Chemicals and Materials, College of Materials Science
and Engineering, Nanjing Forestry University, Nanjing 210037, China

2 College of Chemistry and Chemical Engineering, Jiangxi Normal University, Nanchang 330022,
China

3 Institute of Materials Science and Devices, School of Materials Science and Engineering,
Suzhou University of Science and Technology, Suzhou 215009, China

E-mails: hzhang911220@gmail.com (Zhang H); cmzhang@usts.edu.cn (Zhang C);
shaohua.jiang@njfu.edu.cn (Jiang S)

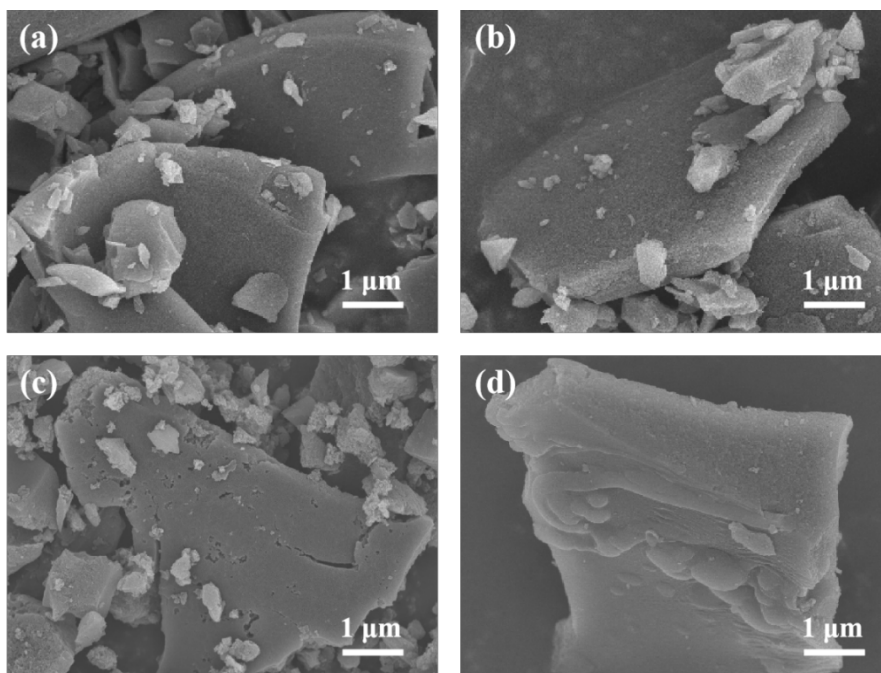


Figure S1. SEM images of the ZnPC samples: (a) ZnPC-750, (b) ZnPC-850, (c) ZnPC-950, and (d) ZnPC-1050.

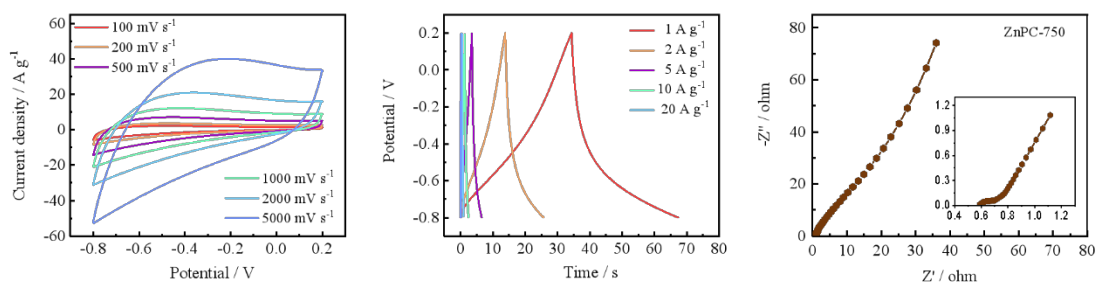


Figure S2. (a) CV curves, (b) GCD curves, and (c) Nyquist plots of the ZnPC-750 electrode.

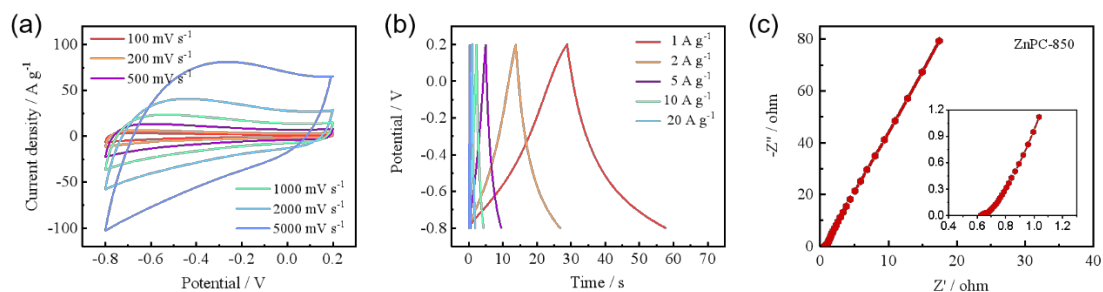


Figure S3. (a) CV curves, (b) GCD curves, and (c) Nyquist plots of the ZnPC-850 electrode.

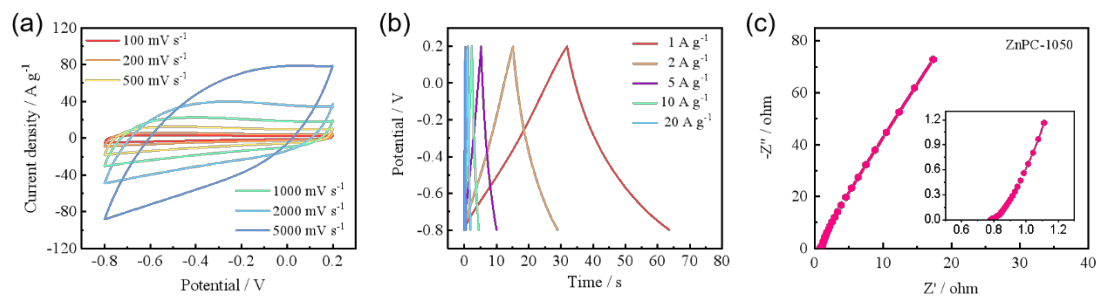


Figure S4. (a) CV curves, (b) GCD curves, and (c) Nyquist plots of the ZnPC-1050 electrode.

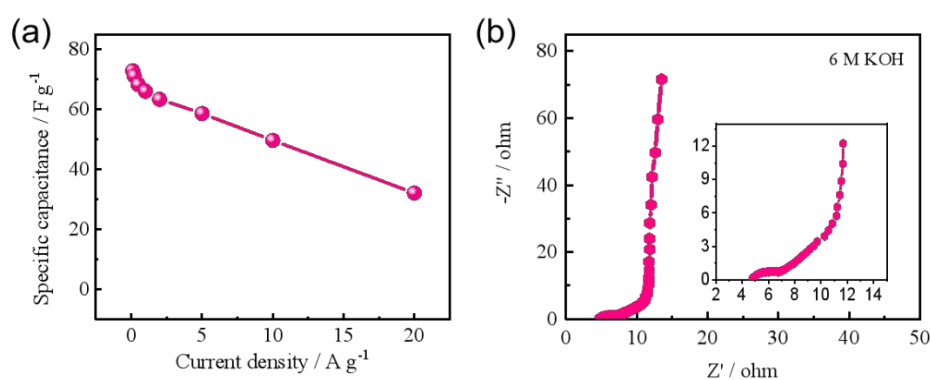


Figure S5. (a) Specific capacitance of the symmetric supercapacitor at various current densities. (b) Nyquist plots of the symmetric supercapacitor in 6 M KOH electrolyte.

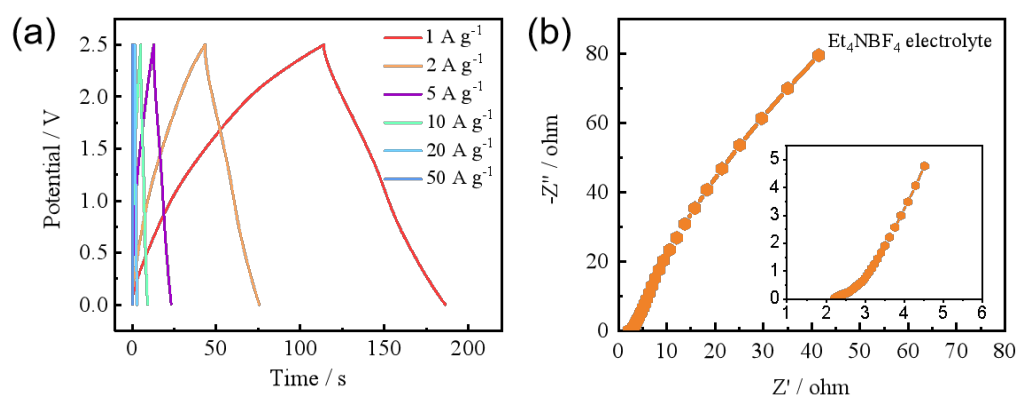


Figure S6. (a) GCD curves and (b) Nyquist plots of the symmetric supercapacitor in Et_4NBF_4 electrolyte.